

Model JH11010 Hillco Leveling System
For Serial Numbers JH11010-25001 thru JH11010-26999



Model JH11010 Hillside Leveling System Parts Manual

SN JH9110-25001 thru JH9110-25999
For John Deere X9 1000 & 1100
Combines



JH11010 Hillside Leveling System

Table of Contents

General Information.....	3
Serial Number Location	3
Text and Illustrations	3
Abbreviations	3
Right and left Identification	3
Part Orders	3
Transition.....	4
Header Adapter	4
Transition Throat	5
Pivot Bushings	7
Header Tilt Cylinder	8
Header Position Sensor	9
Header Lift Cylinders	10
Carriage.....	11
Overcarriage	12
Master Cylinder	14
Undercarriage	15
Carriage Misc. Parts	16
Carriage Position Sensor	17
Carriage Grease Hoses	19
Ladder	20
Ladder Accessories SN (0 - 835000)	20
Ladder Accessories SN (835001 -)	21
Ladder Sensor	22
Ladder Sensor Premium	23
Service	24
Drive Wheel.....	25
Drop Axle.....	26
Feeder House Dust Mitigation Modifications	27
Feeder House Position Sensor Linkage	28
Hydraulic Components.....	18
Leveling Cylinders	29
Leveling Cylinders Hoses	30
Leveling Manifold	31
Hydro Hose Accessories	33
Master - Slave Cylinder Circuit	34
Electrical.....	35
Monitor	35
Controller	37
Wiring Harnesses	38
Decals.....	43

Contact Information

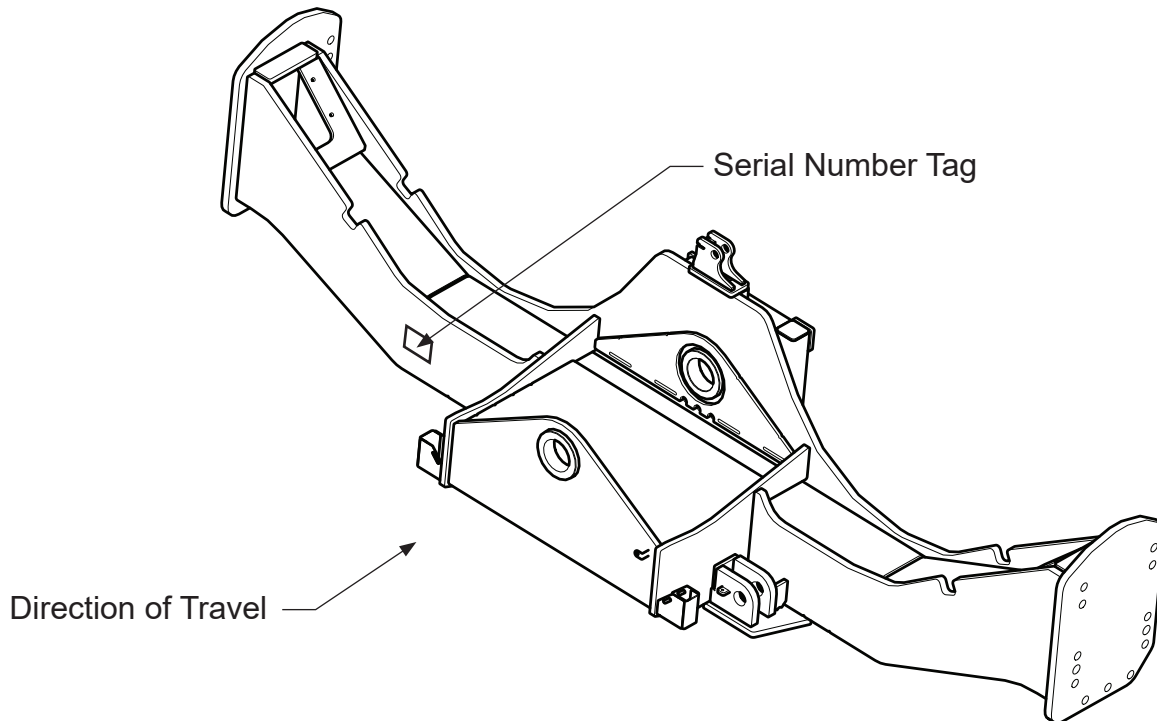
Hillco Technologies, Inc.
 1010 1st Avenue
 Nezperce, Idaho 83543

Phone 800-937-2461
 208-937-2461

www.hillcotechnologies.com
 email: support@hillcotechnologies.com

GENERAL INFORMATION

SERIAL NUMBER LOCATION



TEXT AND ILLUSTRATIONS

The arrangement of this parts catalog is for easy identification of parts. All parts are illustrated in exploded views in proper relation to each other. Some diagrams refer to other pages for further information. Reference numbers used in the illustrations refer to line numbers in the part lists. The part lists appear to the right or below all diagrams and correspond with those diagrams. Included in the part lists, along with the reference numbers are part numbers, part descriptions and the quantity of the part required per leveling system.

ABBREVIATIONS

SN "Serial Number" refers to the serial number given to each leveling system (by Hillco Technologies), as well as the serial number given to the combine (by the specific combine manufacturer) the leveling system is installed. See above for the leveling system's serial number location. This abbreviation is used interchangeably in both instances. Each Model JH11010 Leveling System uses the following serial number format: JH11010-XXXXX (sequential numbers).

ASM "Assembly" refers to a whole grouping of parts (shown in the diagram corresponding with the page where "ASM" is shown unless otherwise noted). Some assemblies have parts that are sold separately, however some must be purchased as a single unit. Hillco Product Specialists will be able to assist you with any questions.

NS "Not Shown" refers to a part that is not depicted in the illustration.

RIGHT AND LEFT IDENTIFICATION

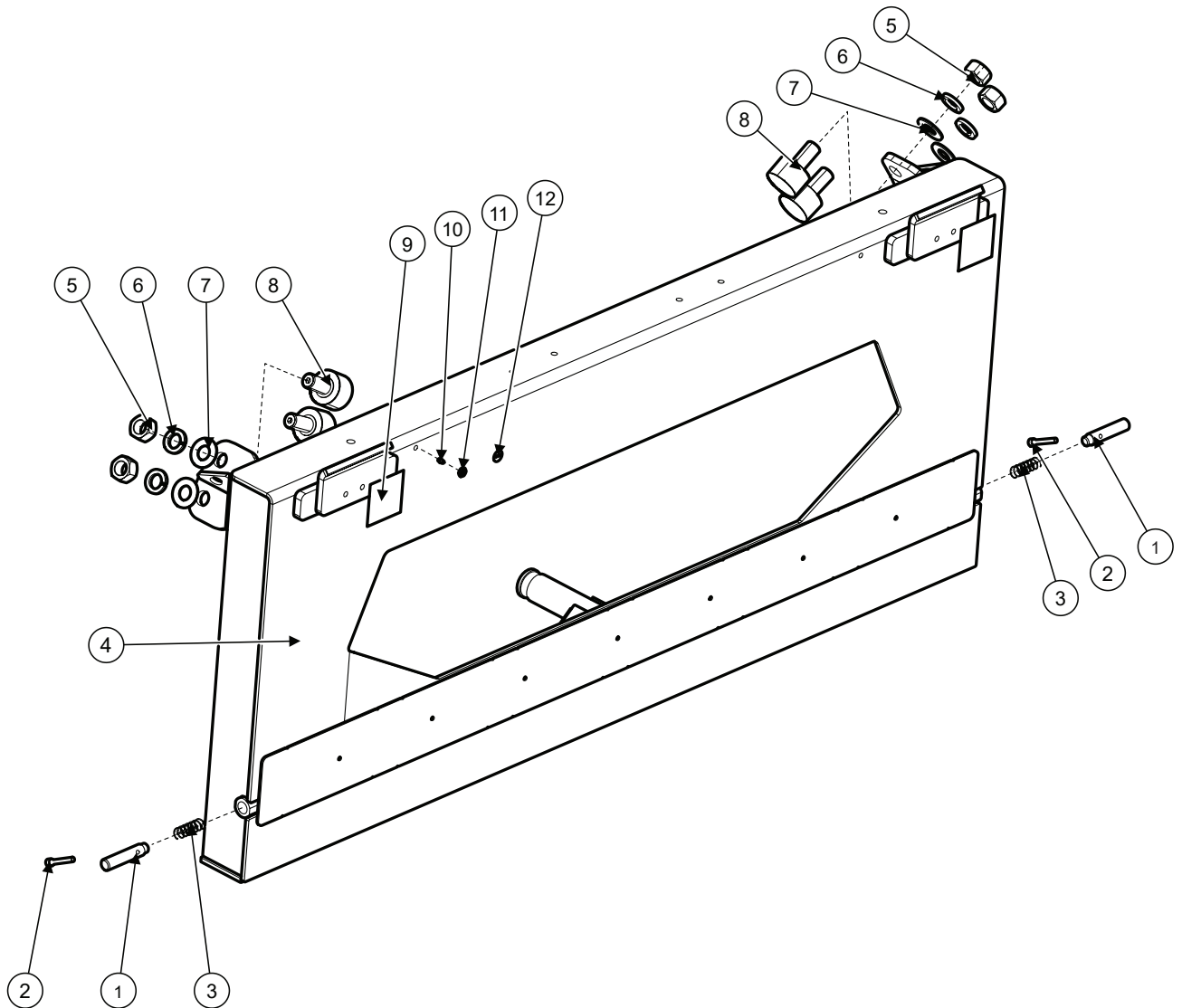
The reference to right-hand and left-hand in this catalog is identified by the operator sitting in the operator's seat, looking toward the front of the machine (in normal forward travel).

PART ORDERS

Orders must specify product model, serial number, correct part number, complete description, quantity required, method of shipment, shipping address, and billing address.

Model JH11010 Hillco Leveling System
 For Serial Numbers JH11010-25001 thru JH11010-26999

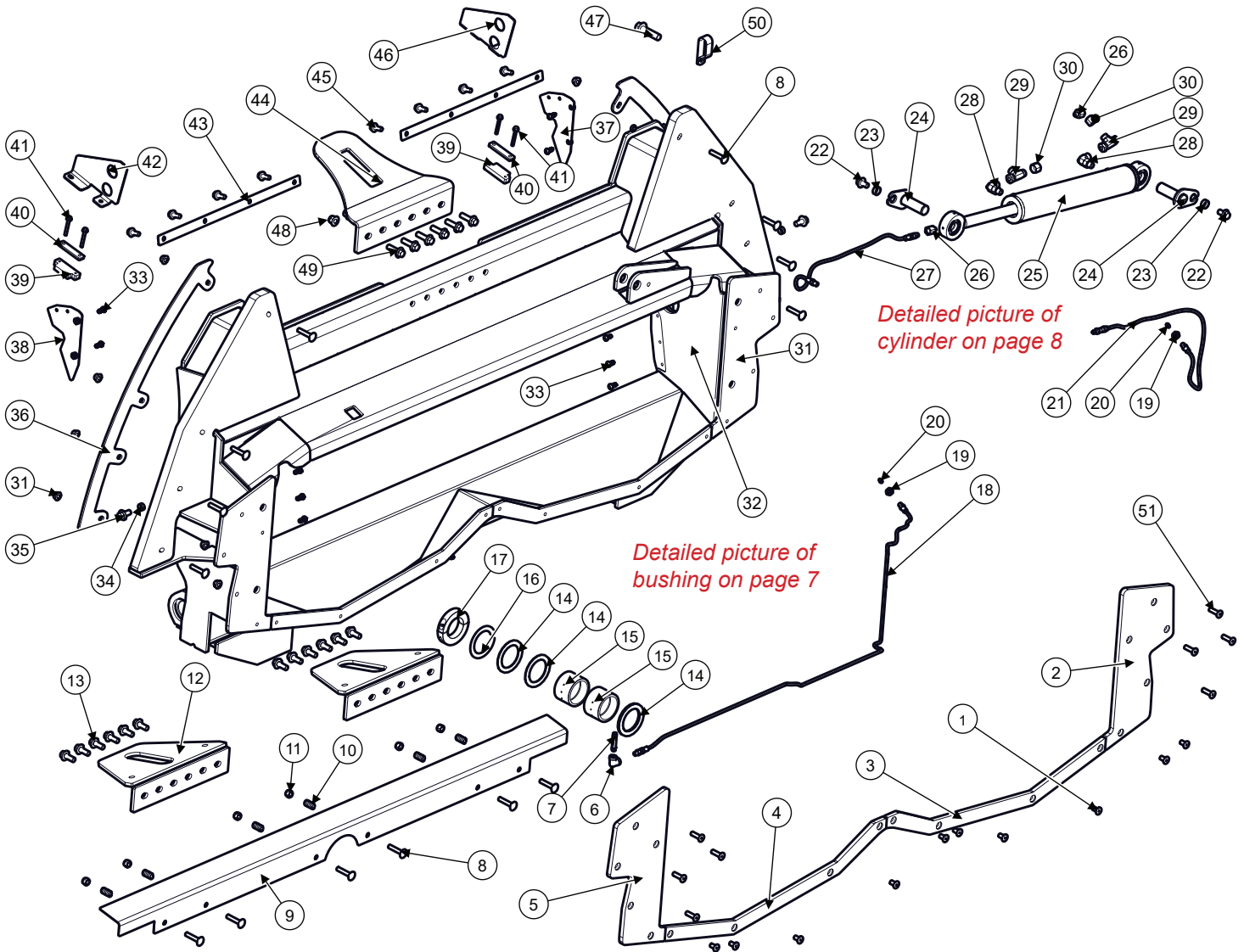
Header Adapter



Header Adapter			
BOM ID	Part No.	Qty	Description
1	1229193	2	LOCKOUT PIN
2	159.010.070	2	BOLT, M10-1.5x70
3	135531	2	1" OD X 2-7/8"L X .0625W
4	1387581	1	TRANSITION, ADAPTER PLATE, BEATERLESS, X9
5	177.02	4	NUT,HX,GR8 1-1/4-12
6	136.020	4	WASHER, LOCK, MED-SPLIT 1-1/4
7	133.020	4	WASHER, FLAT, 1-1/4
8	156096	4	BEARING, TRACK ROLLER, NON-FLANGED
9	100784	2	DECAL, PINCH POINT
10	138011	1	GREASE ZERK, 1/4-28M TAPER
11	155158	1	BULKHEAD LOCK NUT, 1/8NPSM, LINCOLN
12	133741	1	DECAL, GREASE, 50HRS

Model JH11010 Hillco Leveling System
 For Serial Numbers JH11010-25001 thru JH11010-26999

Transition Throat



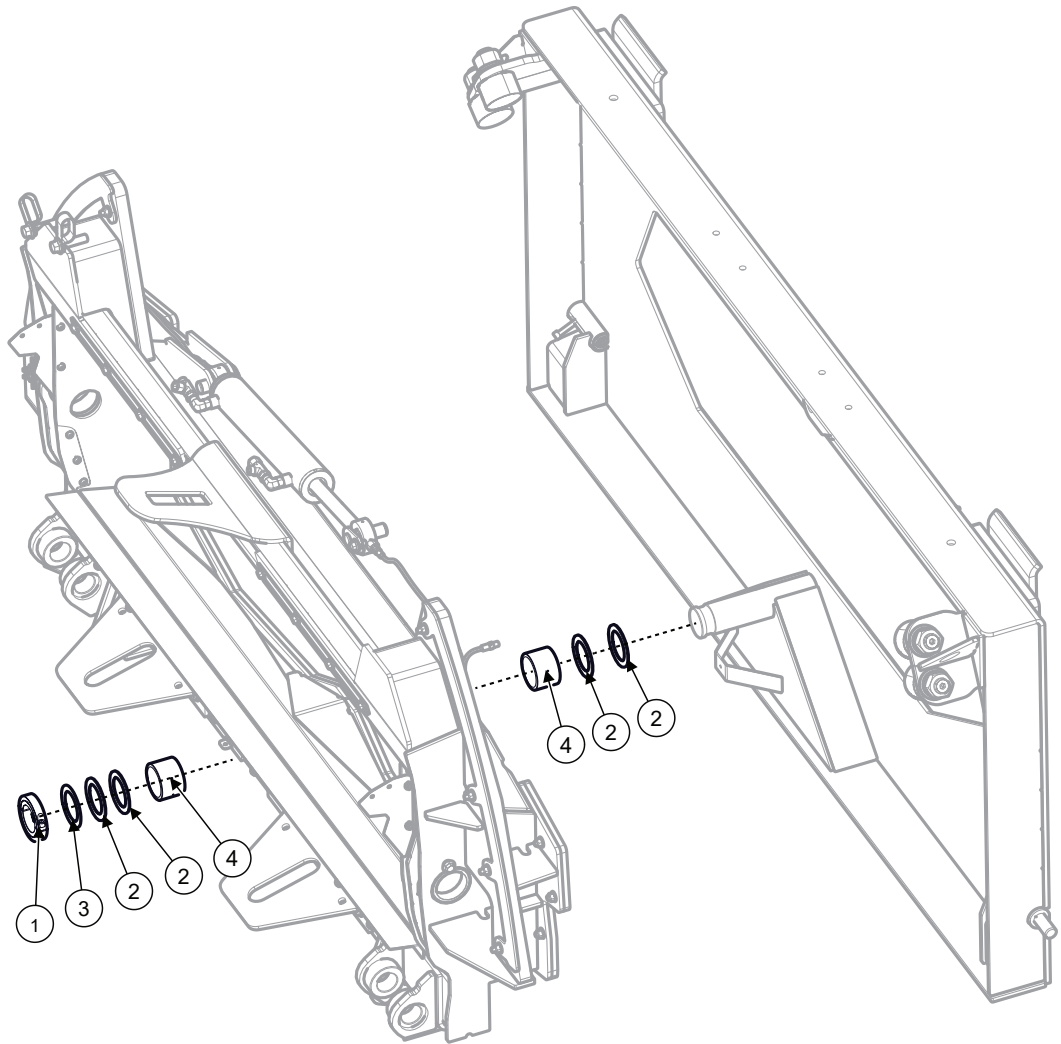
Transition Throat			
BOM ID	Part No.	Qty	Description
1	164.01.020	10	SCREW,FHSC,CL10.9 M10X20
2	1389621	1	WEAR PAD, SIDE, LEFT
3	1389641	1	WEAR PAD, BOTTOM LEFT
4	1389631	1	WEAR PAD, BOTTOM RIGHT
5	1389611	1	WEAR PAD, SIDE, RIGHT
6	1074.02	1	1/8FNPT X 1/8FNPT
7	156110	1	PIPE,BLK,THREADED,BOTH ENDS 1/8NPT X 2"
8	163.010.050	14	CARRIAGE, M10x50
9	1389921	1	FLEX FLOOR
10	143591	6	.125WIREx1.09Lx.703OD
11	191.010	6	NUT,HX,NYL, CL8 M10
12	1389881	2	LOWER TORQUE PLATE
13	122.012.030	12	BOLT, HEX, FLANGE, M12X30

Continued on next page.

Model JH11010 Hillco Leveling System
For Serial Numbers JH11010-25001 thru JH11010-26999

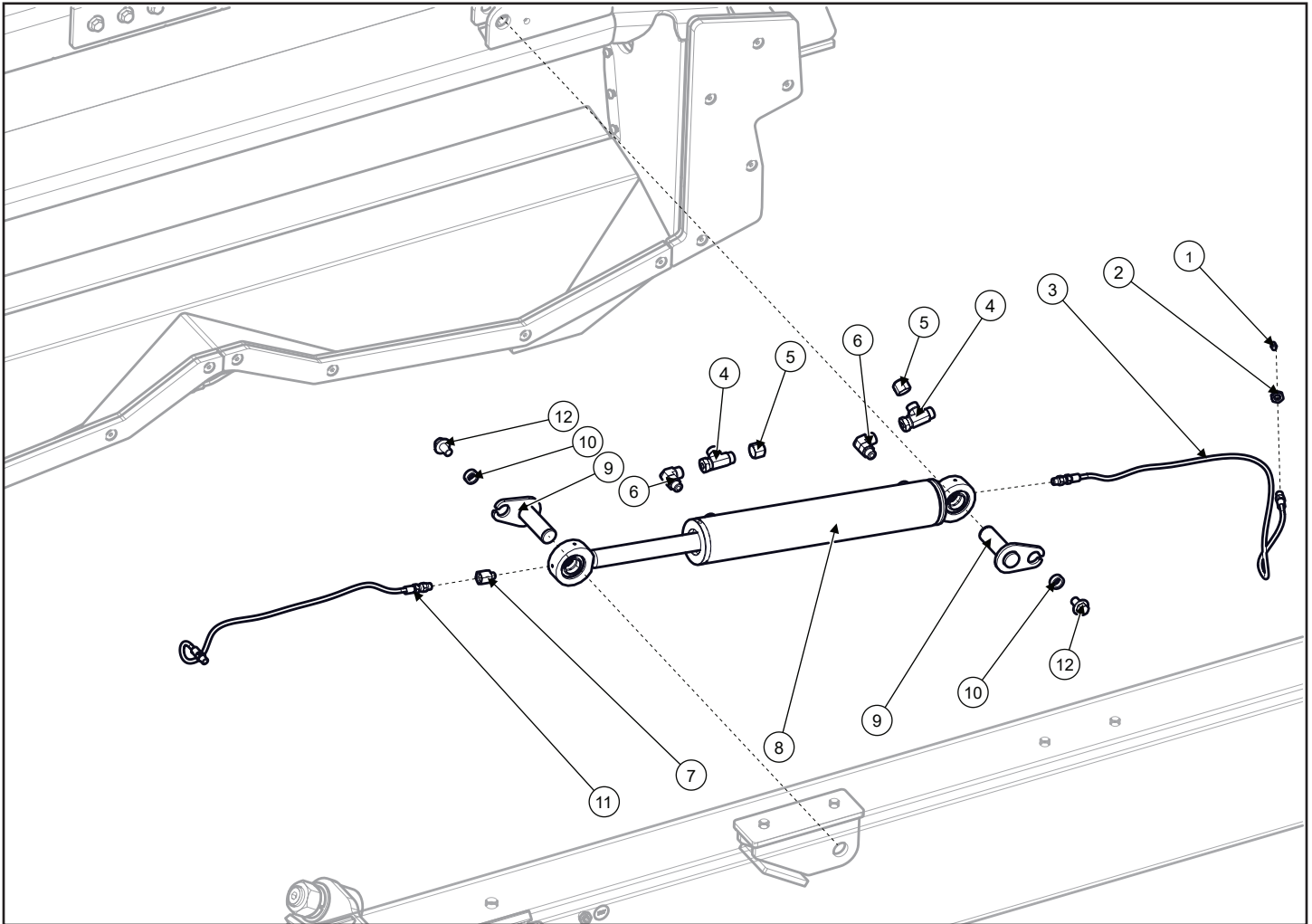
Transition Throat			
BOM ID	Part No.	Qty	Description
14	162.010.040	4	BUSHING, MACH, NR, 10GA, 2-1/2 ID
15	LM-226831	2	TM BUSHING, PIVOT
16	162.014.040	1	14GA, 2-1/2ID
17	150742	1	2-1/2 ID 3-3/4 OD
18	1393781	1	GREASE HOSE -02X50.5";-02MP STR SWVL X 1/8-27 NPSM STR
19	155158	2	1/8NPSM, LINCOLN
20	138011	2	ZERK, 1/4-28MTAPER+D22
21	1393771	1	HLB-02X27";-02MP STR SWVL X 1/8-27 NPSM STR
22	122.012.020	2	BOLT, HEX, FLANGE, M12X20
23	1351031	2	BUSHING, CYLINDER PIN
24	1351591	2	CYLINDER PIN, TRIM
25	147491	1	2-1/2"B x 12-1/2S, 21"CPC
26	135881	2	1/4-28Mx1/8FNPTF, LINCOLN
27	1393761	1	HLB-02X18.5";-02MP STR SWVL X 1/8-27 NPSM STR
28	1003.06.06	2	-6MORB X -6MORFS
29	1008.06	2	SWIVEL NUT, RUN, -6ORFS
30	1068.06	2	-6FORS
31	128.010	16	NUT, HEX, FLANGE, STOVER, CL10 M10X1.5
32	1389191	1	THROAT
33	263.008.018	10	BUTTON HEAD SCREW, M8x1.25x18MM
34	10041.12.00008	2	RND, 1018CD, 3/4" X 1/2"
35	122.012.025	2	BOLT, HEX, FLANGE, M12X25
36	1389911	2	WEAR PLATE, ROLLER
37	1389971	2	GRAIN SHIELD, UPPER LEFT
38	1389951	2	GRAIN SHIELD, UPPER RIGHT
39	1391581	2	FEEDERHOUSE, MID FLOOR, SPACER
40	1391571	2	FEEDERHOUSE, MID FLOOR, SPACER MOUNT
41	122.006.050	4	BOLT, HEX, FLANGE, M6X50
42	1395271	1	FORE AFT, TRANSITION SEAL ROD MOUNT, RH
43	1391831	2	PLATE, TRANSITION HANGING SEAL, CRUSH PLATE
44	1389891	1	UPPER TORQUE PLATE
45	122.01	8	M10X25
46	1395261	1	FORE AFT, TRANSITION SEAL ROD MOUNT, LH
47	122.008.020	2	BOLT, HEX,FLANGE,CL10.9 M8X1.25X20
48	127.012	6	NUT, HX,FL,NYL, CL 10 M12
49	122.012.040	6	BOLT, HEX,FLANGE, M12X40
50	146651	2	CLAMP, DOUBLE
1	164.01.035	10	SCREW,FHSC,CL10.9 M10X35

Header Adapter Bushings



Pivot Bushings			
BOM ID	Part No.	Qty	Description
1	150742	1	2-1/2 ID 3-3/4 OD
2	162.010.040	4	BUSHING, MACH, NR, 10GA, 2-1/2 ID
3	162.014.040	1	14GA, 2-1/2ID
4	LM-226831	2	TM BUSHING, PIVOT

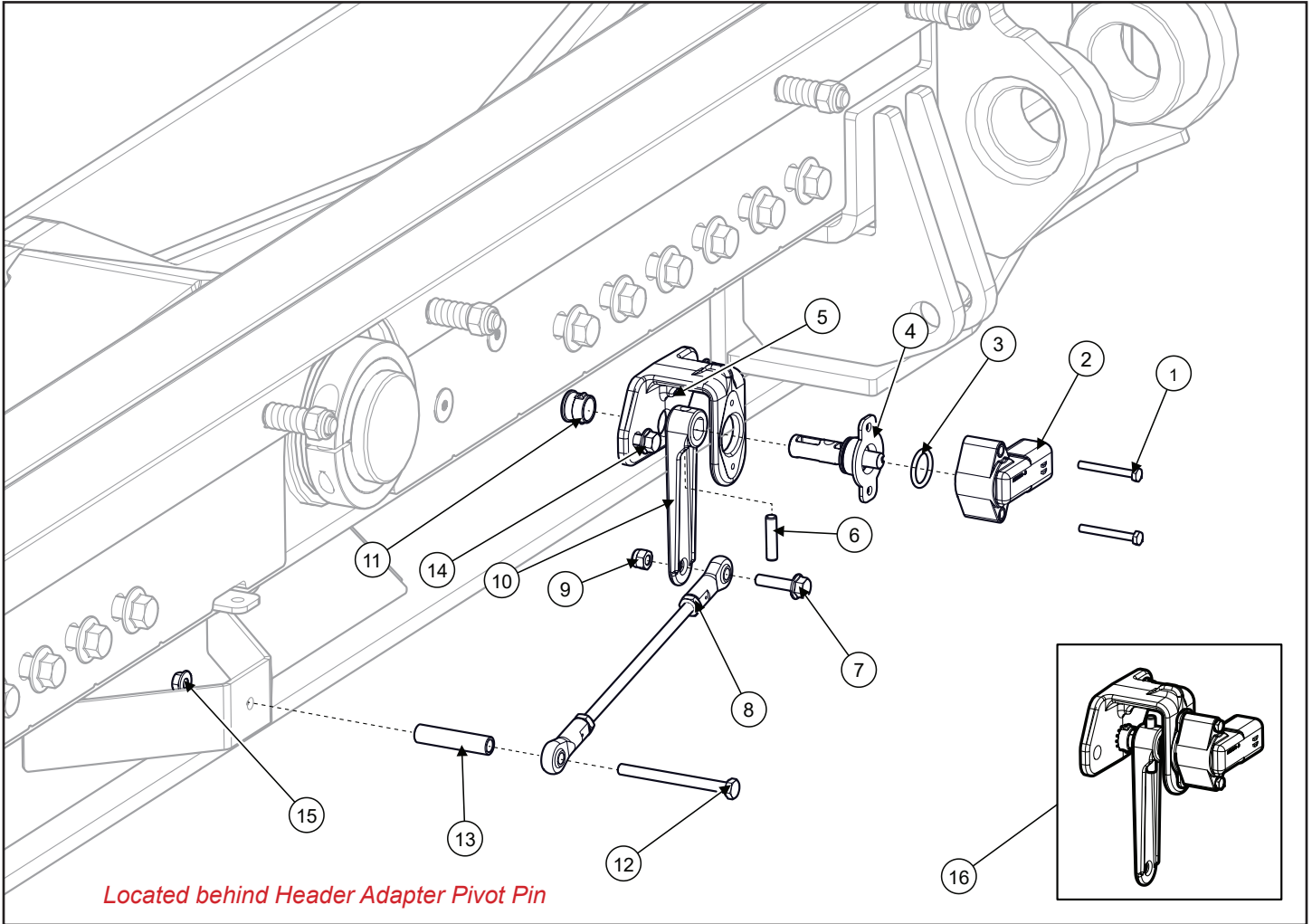
Header Tilt Cylinder



Slave Cylinder

BOM ID	Part No.	Qty	Description
1	138011	1	GREASE ZERK, 1/4-28MTAPER
2	155158	1	1/8NPSM, LINCOLN
3	1393771	1	GREASE HOSE -02X27";-02MP STR SWVL X 1/8-27 NPSM STR
4	1008.06	2	SWIVEL NUT, RUN, -6ORFS
5	1068.06	2	-6FORS
6	1003.06.06	2	-6MORB X -6MORFS
7	135881	1	1/4-28Mx1/8FNPTF, LINCOLN
8	147491	1	CYLINDER , 2-1/2"B x 12-1/2S, 21"CPC (SLAVE CYLINDER)
NS	141281	-	SLAVE CYLINDER REBUILD KIT
9	1351591	2	CYLINDER PIN, TRIM
10	1351031	2	BUSHING, CYLINDER PIN
11	1393761	1	HLB-02X18.5";-02MP STR SWVL X 1/8-27 NPSM STR
12	122.012.020	2	BOLT, HEX, FLANGE, M12X20

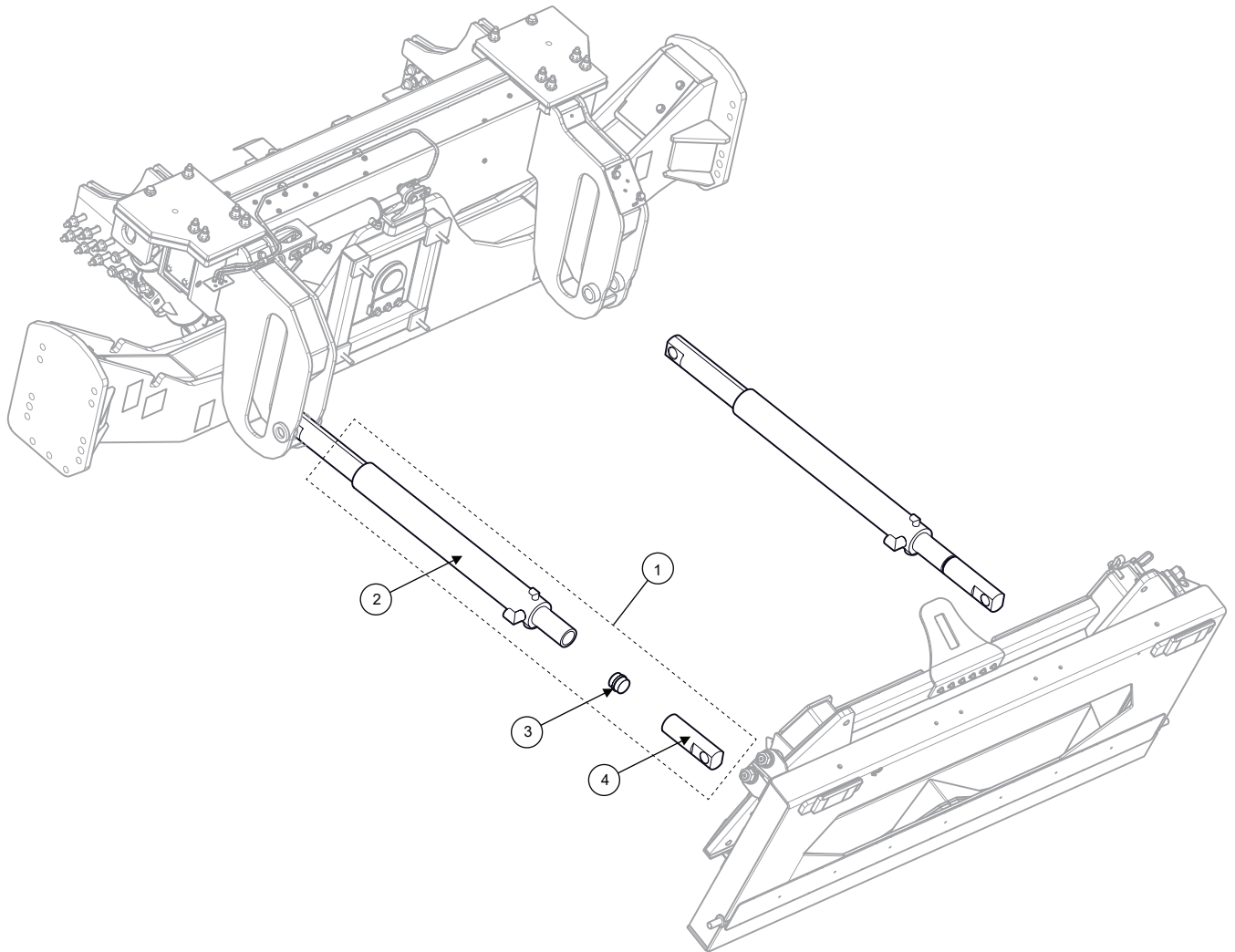
Header Position Sensor



Located behind Header Adapter Pivot Pin

Header Position Sensor			
BOM ID	Part No.	Qty	Description
1	170.004.035	2	BOLT, HX,CL8.8, M4x35
2	151381	1	SENSOR, ROTATION, HALL 2CH +/- 120DE (JD#AXE14246)
3	151391	1	O-RING, 11/16ID, (JD#P48347)
4	151401	1	SENSOR SHAFT, ROUGH SERVICE, (JD#AXE14888)
5	151321	1	BRACKET, SENSOR, (JD#HXE16001)
6	201.006.036	1	PIN, ROLL, M6X36
7	122.006.025	1	BOLT, HEX, FLANGE, GRADE 10.9, M6X25
8	1389931	1	SENSOR LINKAGE, 7-13/16
9	191.006	1	NUT, HX, NYL, CL8 M6
10	151351	1	ARM, SENSOR
11	151361	1	BUSHING, NYLON, (JD#R41076)
12	121.006.070	1	HEX BOLT, GRADE 10.9 M6x70
13	1370431	1	SPACER, SENSOR LINKAGE
14	122.006.016	2	BOLT, HEX, FLANGE, GRADE 10.9 M6X16
15	123.006	1	NUT, M6 X 1.0
16	1389981	1	ASSEMBLY - POSITION SENSOR, Includes Part No. 1-6, 10 & 11

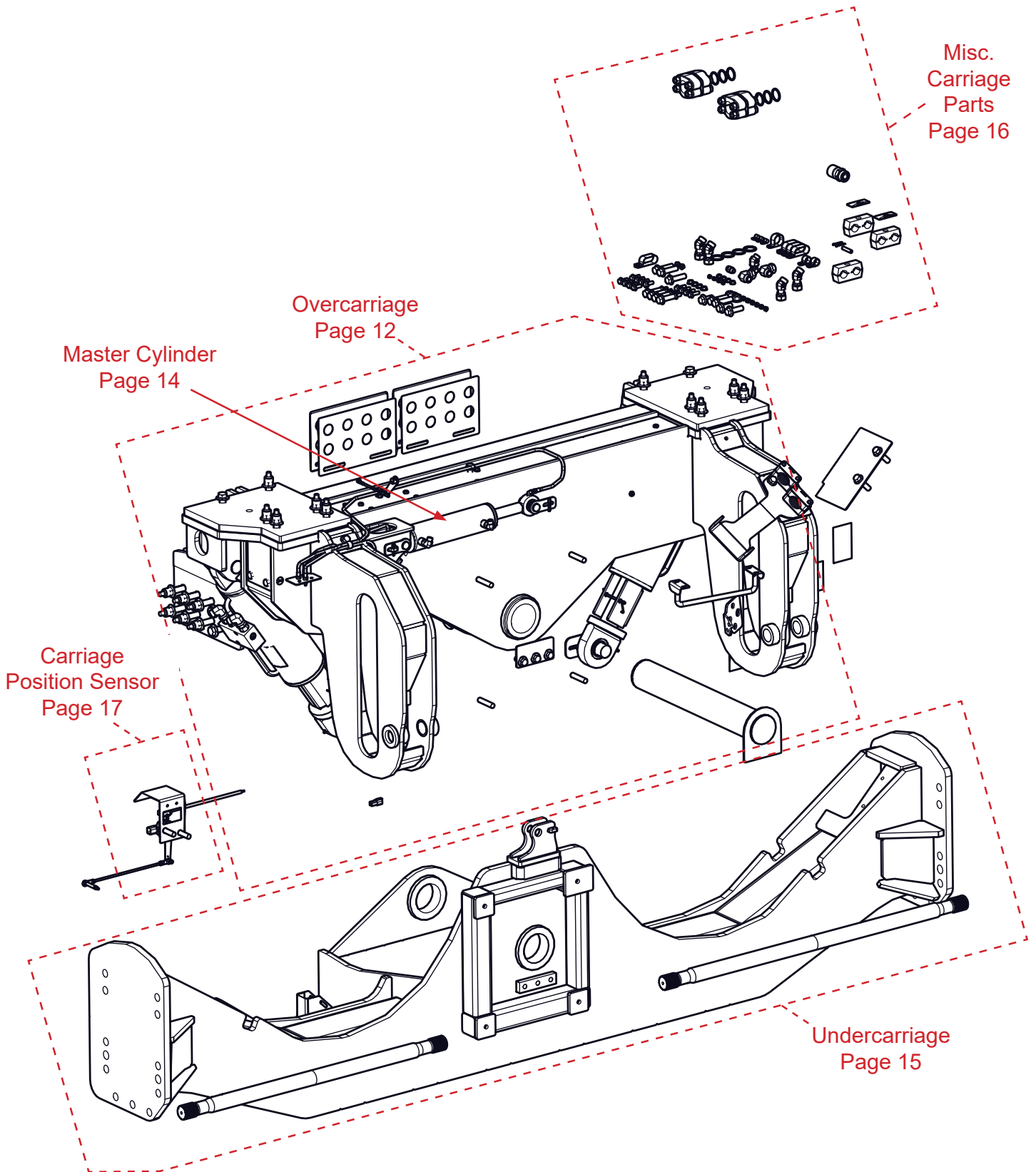
Header Lift Cylinders



Header Lift Cylinders			
BOM ID	Part No.	Qty	Description
1	1389761	2	FEEDER HOUSE CYLINDER, MODIFIED
2	-	2	STOCK DEERE CYLINDER - MODIFIED
3	1389771	2	FEEDER HOUSE LIFT CYLINDER SPLICE
4	-	2	STOCK DEERE CYLINDER - MODIFIED

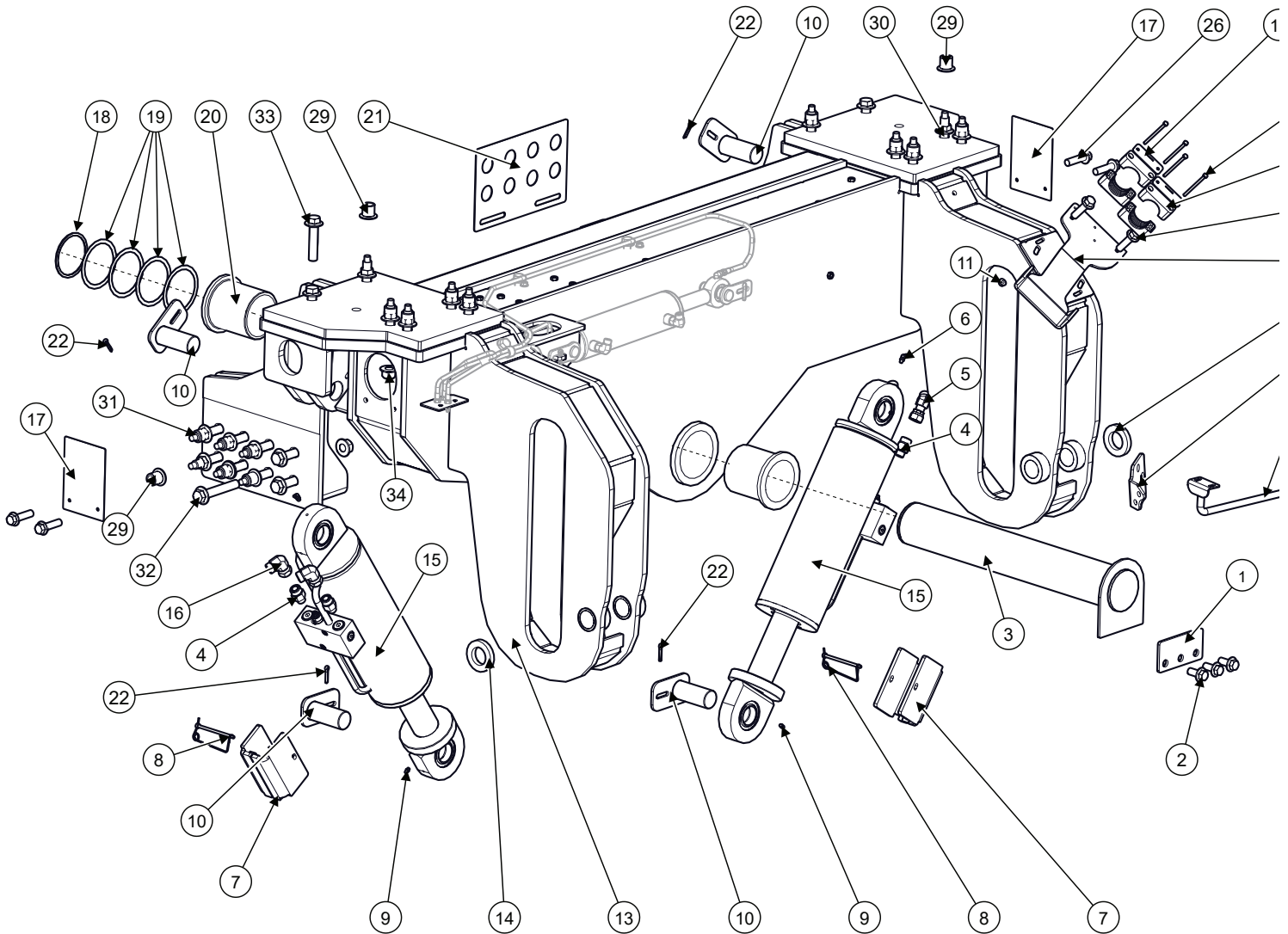
Note: Base ends of both Header lift Cylinders were shortened such that the base end from the flange is now 17.12"

Carriage Overview



Model JH11010 Hillco Leveling System
For Serial Numbers JH11010-25001 thru JH11010-26999

Overcarriage

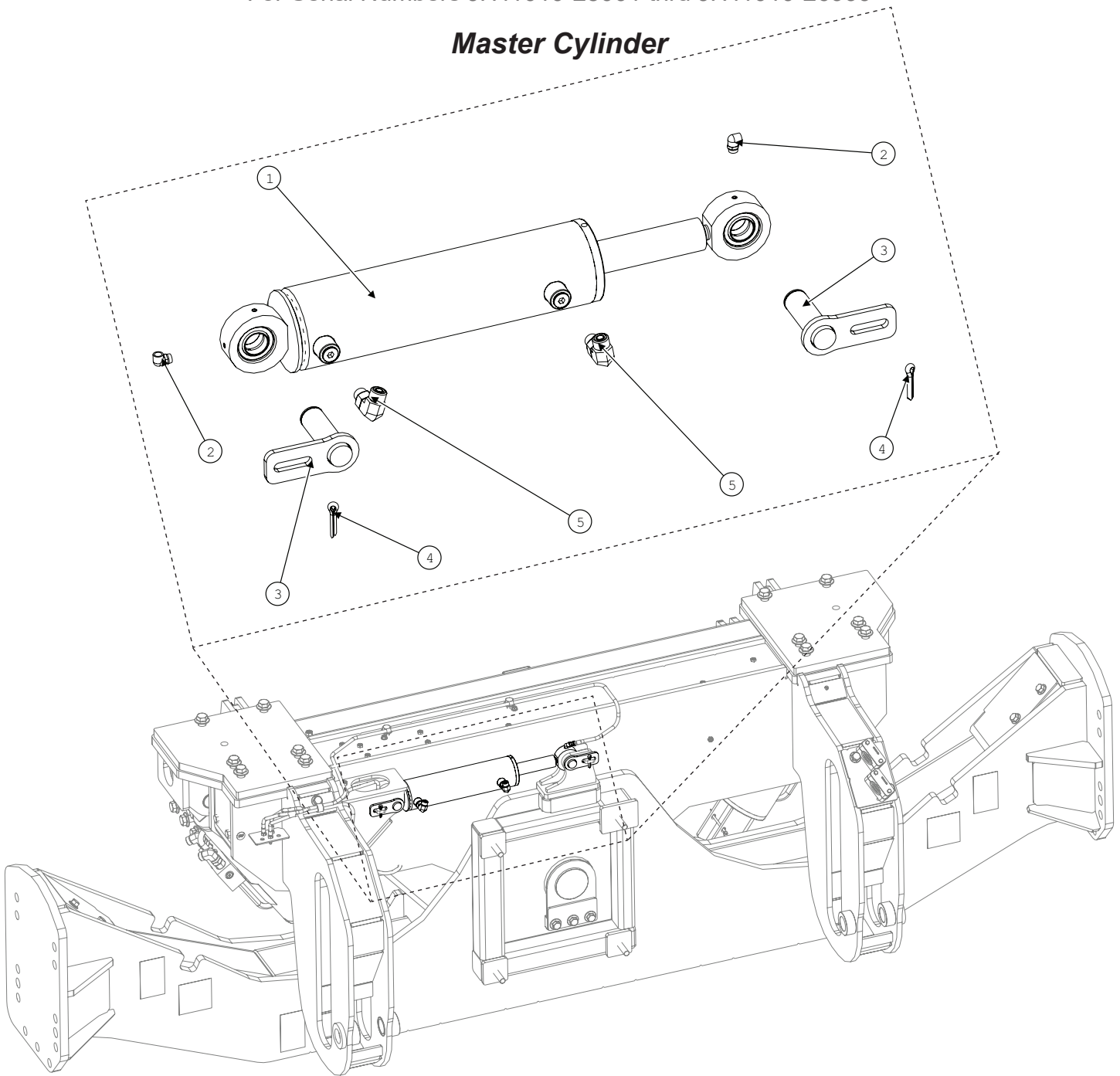


Model JH11010 Hillco Leveling System
For Serial Numbers JH11010-25001 thru JH11010-26999

Overcarriage			
BOM ID	Part No.	Qty	Description
1	1369561	1	PIN STOP
2	122.016	3	M16X35
3	1388822	1	PIVOT PIN
4	1001.12.10	4	-12MORB X -10MORFS
5	1005.10.10	2	-10MORSx-10FORS
6	141931	2	GREASE ZERK, 1/4-28M TAPER 45 DEGREE
7	1388871	2	STOP, LEVELER CYL
8	146.004.064	2	PIN,SNAP,LCK
9	138011	2	GREASE ZERK, 1/4-28M TAPER
10	1388841	4	LEVELER, CYL PIN
11	123.008	2	HEX NUT FLANGE, M8x1.25
12	140651	2	COVER PLATE
13	1386983	1	OVERCARRIAGE, (JH-11010)
14	1392251	2	SPACER, FEEDERHOUSE LIFT CYL MOUNT
15	156417	2	CYLINDER, LEVELING, DUAL CB 5-1/2" BORE, 13" STROKE, 25" CPC
NS	156550	-	SEAL KIT, MAIN LEVELER CYLINDERS X9
16	1006.10.10	2	-10FORFS X -10MORFS
17	1392471	2	COVER PLATE, OC OPENING
18	138651	1	SNAP RING, EXTERNAL, SPIRAL, 4"ID
19	138641	4	WASHER, 4.016 ID X 4.764 OD
20	1388811	2	BUSHING, PIVOT
21	1392171	2	SHIM, OC SIDE, 16 GA
	1392181	2	SHIM, OC SIDE, 14 GA
	1392191	2	SHIM, OC SIDE, 12 GA
	1392201	2	SHIM, OC SIDE, 10 GA
22	142.004	4	COTTER PIN, 1/4X1
23	1394371	1	HYDRAULIC HOSE BRACKET, FEEDERHOUSE
24	1392241	1	BRACKET, HOSE BLKHD, FEEDERHOUSE
25	1393711	1	HYDRO HOSE, MOUNT PLATE
26	122.008.025	6	BOLT, HX,FL,CL10.9 M8X25
27	140641	2	CLAMP, 2" BEHRINGER
28	170.006	4	BOLT,HX,CL8.8 M6X90
HUCK BOLT FASTENERS			
29	156525	22	METRIC BOBTAIL, 20mm, COLLAR
30	156524	10	METRIC BOBTAIL, 20mm DIA, 55mm-65mm GRIP
31	156523	12	METRIC BOBTAIL, 20mm DIA, 85mm-95mm GRIP
STANDARD FASTENERS - EITHER HUCK OR STANDARD BOLTS CAN BE USED TO SECURE CARRIAGE			
32	122.02	20	BOLT,HX,FL,CL10.9 M20X120
33	122.02	14	BOLT,HX,FL,CL10.9 M20X90
34	128.02	34	FL,STV,CL10 M20x2.5

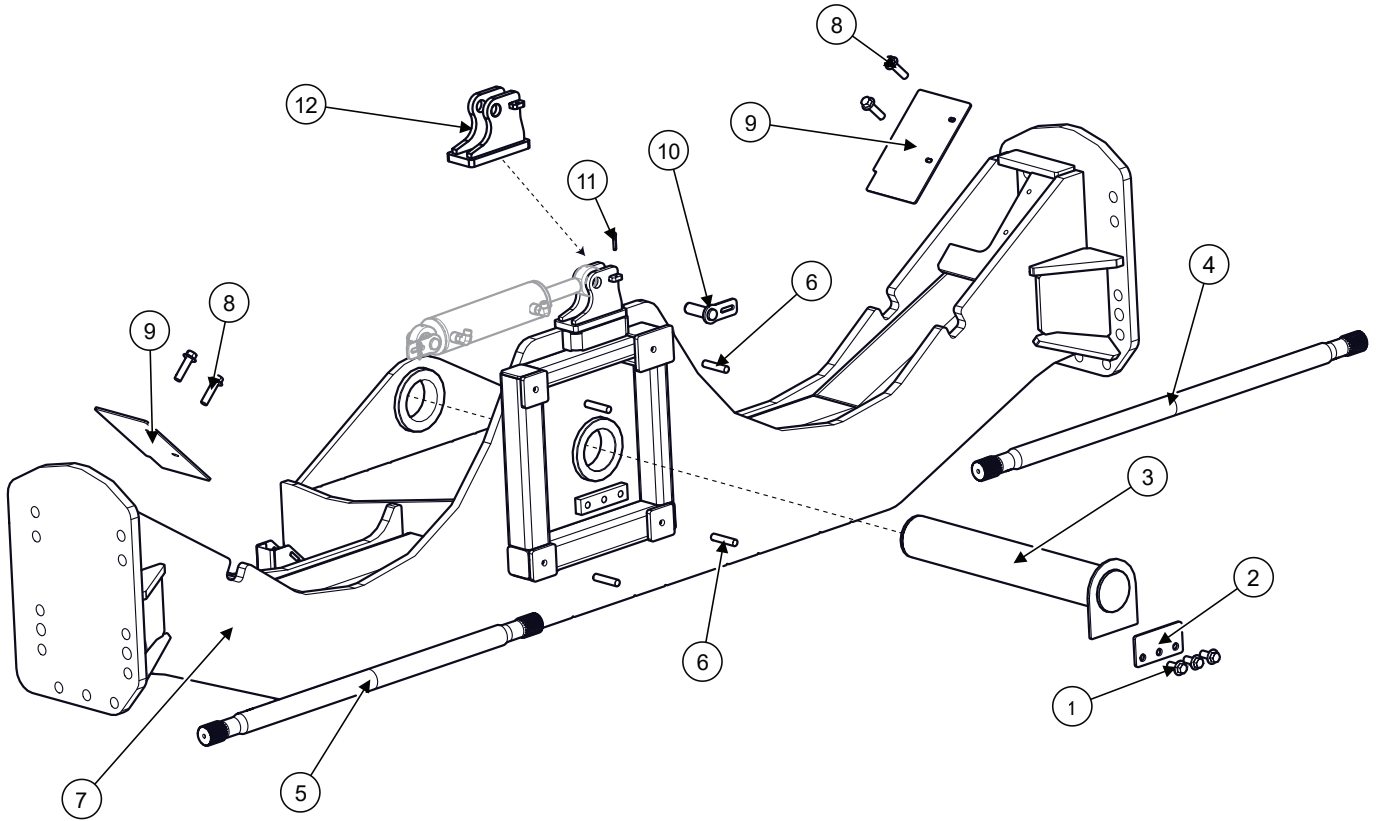
Model JH11010 Hillco Leveling System
 For Serial Numbers JH11010-25001 thru JH11010-26999

Master Cylinder



Master Cylinder			
BOM ID	Part No.	Qty	Description
1	140342	1	CYLINDER, MASTER, 3"B,8-3/4"S,1-3/8"R,17-1/4CPC
NS	HC-134201	-	CYLINDER REBUILD SEAL KIT
2	135771	2	ADAPTER,GREASE,90°
3	1345961	2	CYLINDER PIN
4	142.004.016	2	PIN, COTTER 1/4" X 1"
5	1003.06.06	2	-6MORB X -6MORFS

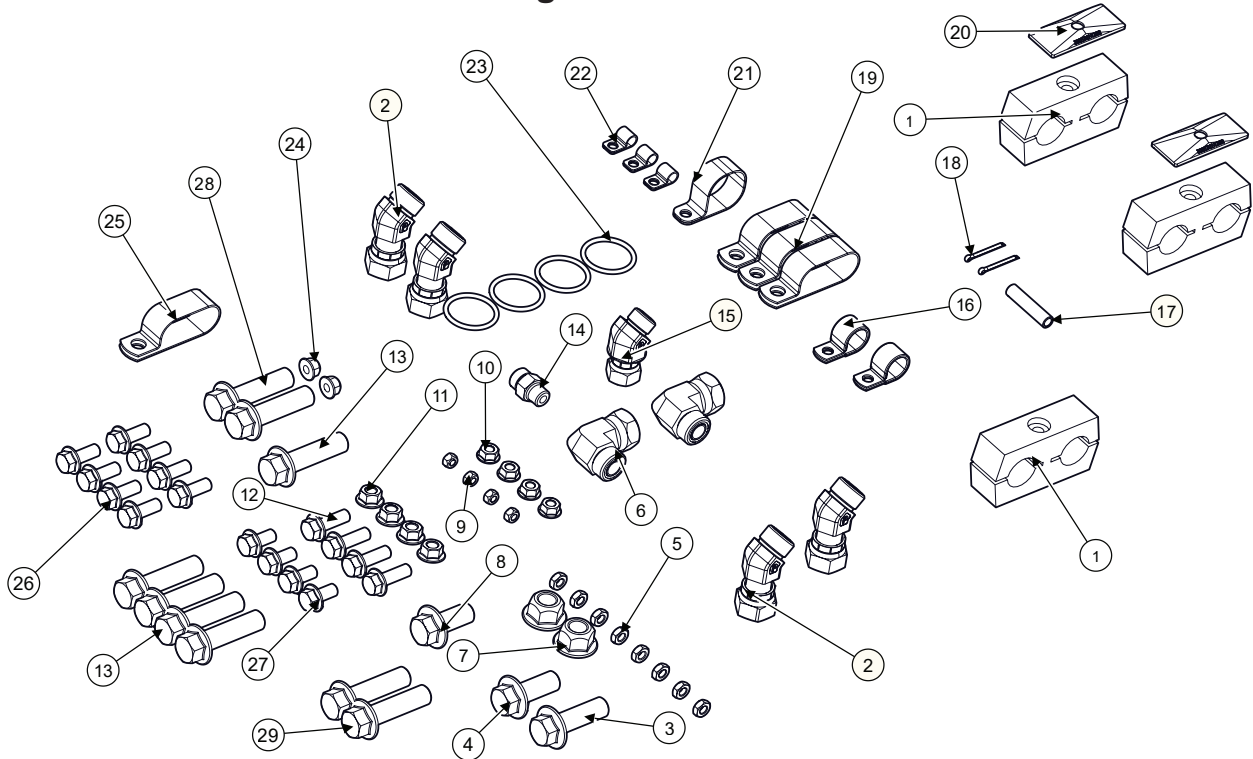
Undercarriage



Undercarriage			
BOM ID	Part No.	Qty	Description
1	122.016	3	BOLT, HEX, FLANGE, M16X35
2	1369561	1	PIN STOP
3	1388822	1	PIVOT PIN
4	156415	1	COUNTER SHAFT, 22T BOTH ENDS, 1258MM LENGTH
5	156414	1	COUNTER SHAFT, 22T BOTH ENDS, 1093MM LENGTH
6	155.016.075	4	STUD, GRADE 10.9 M16X75,
7	1387852	1	UNDERCARRIAGE, X9
8	122.008.030	4	BOLT, HX,FL,CL10.9 M8X30
9	1389071	2	FINAL, ACCESS COVER
10	1345961	1	CYLINDER PIN,
11	142.004	1	COTTER PIN, 1/4X1
12	1291542	1	WELD ON REPLACEMENT MASTER CYLINDER MOUNT

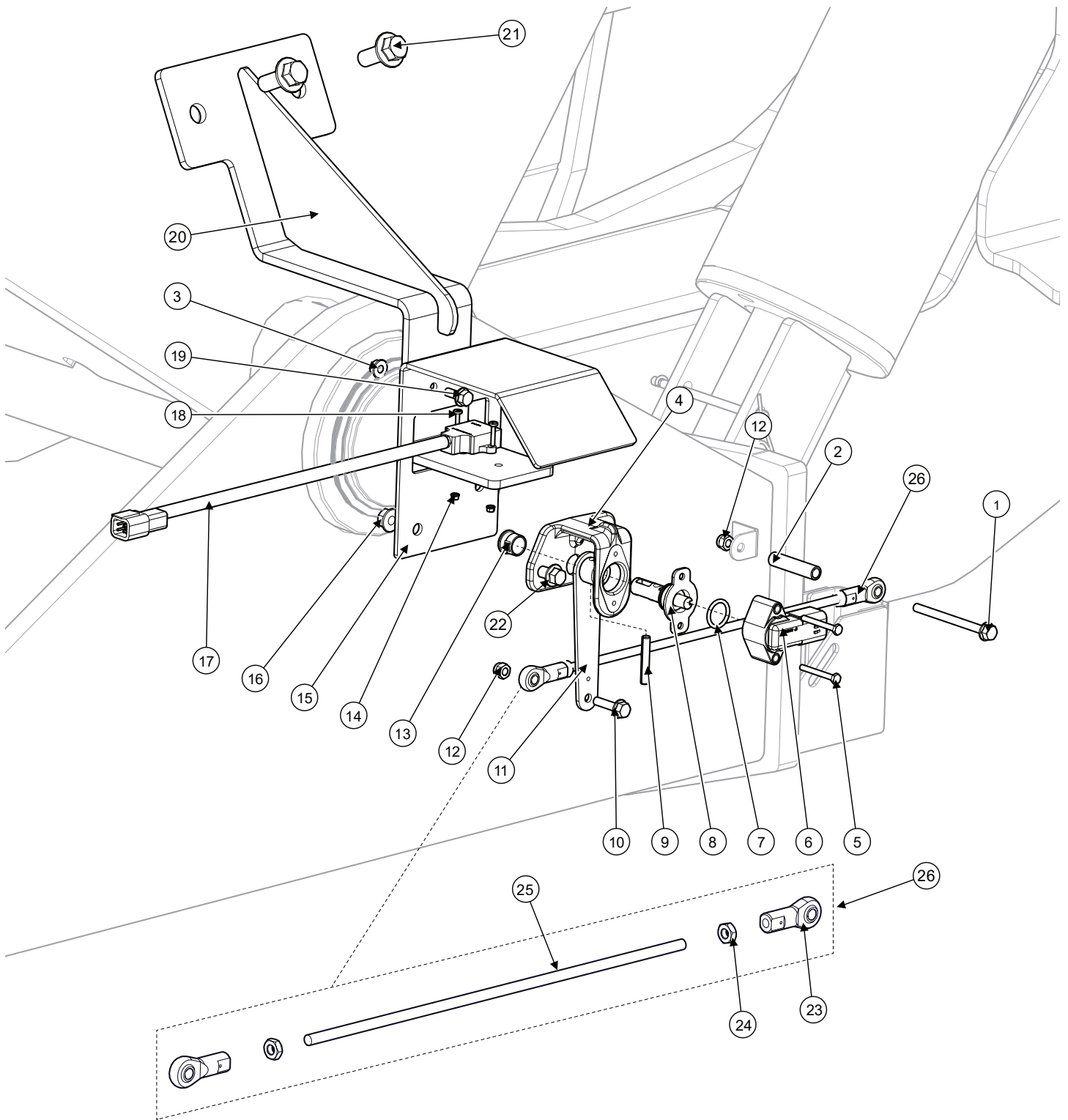
Model JH11010 Hillco Leveling System
 For Serial Numbers JH11010-25001 thru JH11010-26999

Carriage Misc. Parts



BOM ID	Part No.	Qty	Description
1	154201	3	BLOCK, TWIN, 1.12"
2	1005.10.10	4	-10MORSx-10FORS 45 HYDRAULIC FITTING
3	122.016	1	M16X50
4	122.016	1	M16X40
5	174.005	8	NUT, JAM, GRADE 5, 5/16
6	1006.10.10	2	-10FORFS X -10MORFS 90 HYDRAULIC FITTING
7	128.016	2	NUT, STOVER M16x2.0,
8	122.016.035	1	BOLT, FLANGE, HEX, M16X35
9	126.006	4	NUT, STOVER M6
10	123.008	4	NUT, M8
11	123.010	4	M10 x 1.5
12	122.010.030	4	M10X30
13	122.008.120	9	BOLT, HEX, FLANGE M8X120
14	1001.06.06	1	-6MORBx-6MORFS STRIAGHT HYDRAULIC FITTING
15	1005.08.08	1	-6FORFS X -6MORFS 45 HYDRAULIC FITTING
16	135791	2	7/8" R/C W/ 3/8"HOLE
17	1370431	1	SPACER, SENSOR LINKAGE
18	142.002.024	2	PIN, COTTER 1/8"x1-1/2"
19	146651	3	CLAMP, DOUBLE
20	154771	2	COVER PLATE, FOR TWIN CLAMP, BEHRINGER #TS-TCP-04-Z
21	135631	1	1-1/2"OD, R/C, 3/8HOLE
22	142101	3	LOOP, CLOSED, .375", R/C
23	147621	4	O-RINGS CODE 62 1-1/4"
24	128.008	2	STOVER NUT M8x1.5
25	147781	1	CLAMP 1/4" DOUBLE LOOP 3/8HOLE
26	122.010.025	8	BOLT, HEX, FLANGE M10X25
27	122.010.020	4	BOLT, HEX, FLANGE M10X20
28	122.008.070	2	BOLT, HEX, FLANGE M8X70
29	122.008.040	2	BOLT, HEX, FLANGE M8X40

Carriage Position Sensor

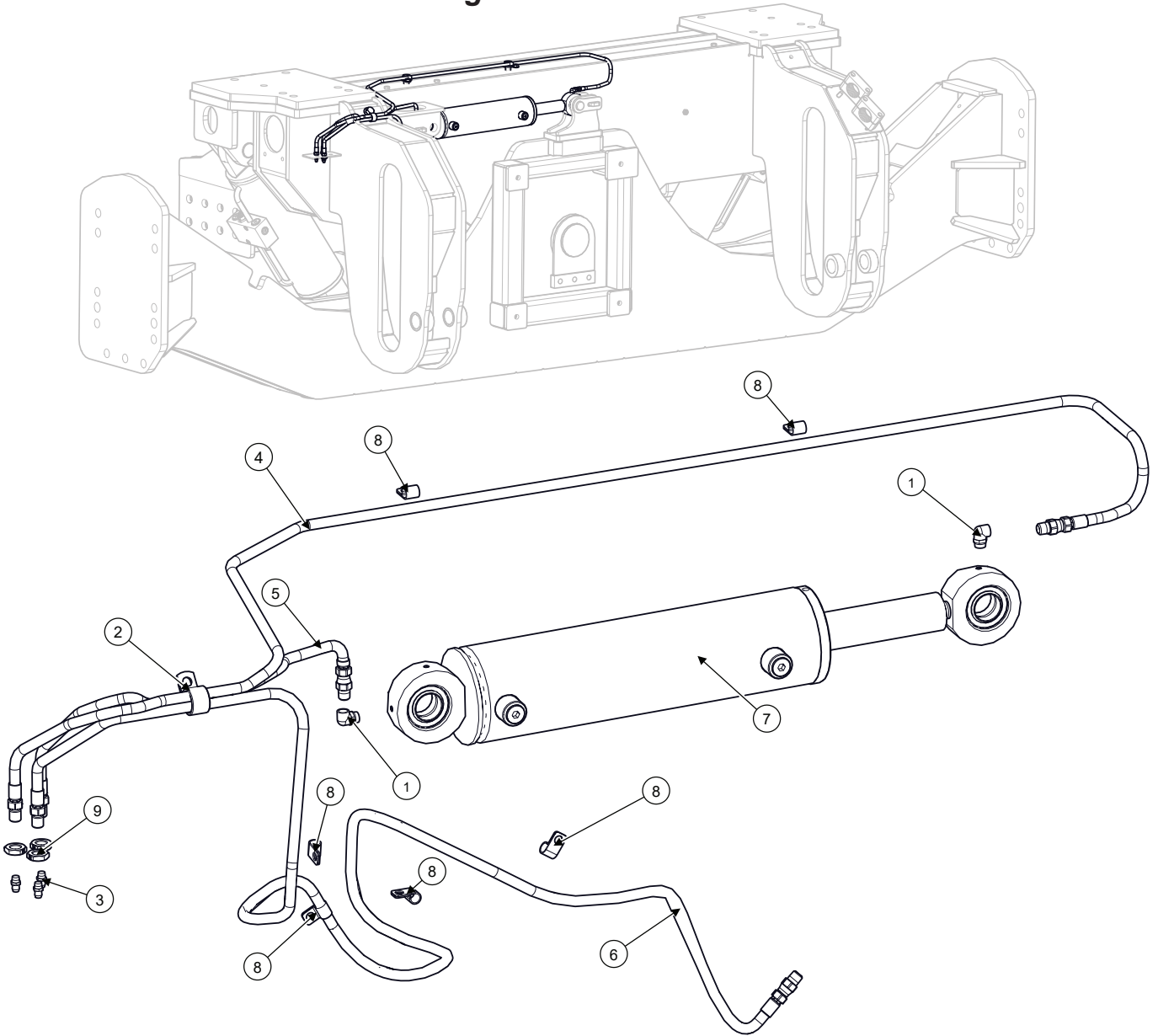


Model JH11010 Hillco Leveling System
For Serial Numbers JH11010-25001 thru JH11010-26999

Carriage Position Sensor			
BOM ID	Part No.	Qty	Description
1	122.006	1	M6X75
2	1370431	1	SPACER, SENSOR LINKAGE
3	123.006	2	M6 X 1.0
4	151321	1	BRACKET, SENSOR (JD#HXE16001)
5	170.004	2	M4x35
6	151381	1	SENSOR, ROTATION, HALL 2CH +/-120DE (AXE14246)
7	151391	1	O-RING, 11/16ID (JD#P48347)
8	151401	1	SENSOR SHAFT, ROUGH SERVICE DEVICE (JD#AXE14888)
9	201.006.036	1	PIN,ROLL M6X36
10	122.006	1	M6X25
11	151371	1	ARM, TILT SENSOR (AXE17303)
12	123.006	2	NUT HX,FL,CL10, M6 X 1.0
13	151361	1	BUSHING (JD#R41076)
14	119.#06	2	NUT, HX,FL,SERR 6-32
15	1391731	1	CARRIAGE POSITION SENSOR, MOUNT PLATE
16	123.008	2	M8x1.25
17	1347143	1	CLINOMETER
18	114.#06	2	6-32X5/8
19	122.006	2	M6X16
20	1392491	1	SENSOR MOUNT, OC
21	122.012	2	M12X30
22	122.008.020	2	BOLT, HX,FL,CL10.9 M8X1.25X20
23	151881	2	FEMALE, 1/4-28
24	10276.04.00192	1	ALLTHREAD,GR(A) 1/4-28X12
25	184.004	2	NUT, HX,JAM, GR5 1/4-28
26	1388881	1	SENSOR, LINKAGE

Model JH11010 Hillco Leveling System
 For Serial Numbers JH11010-25001 thru JH11010-26999

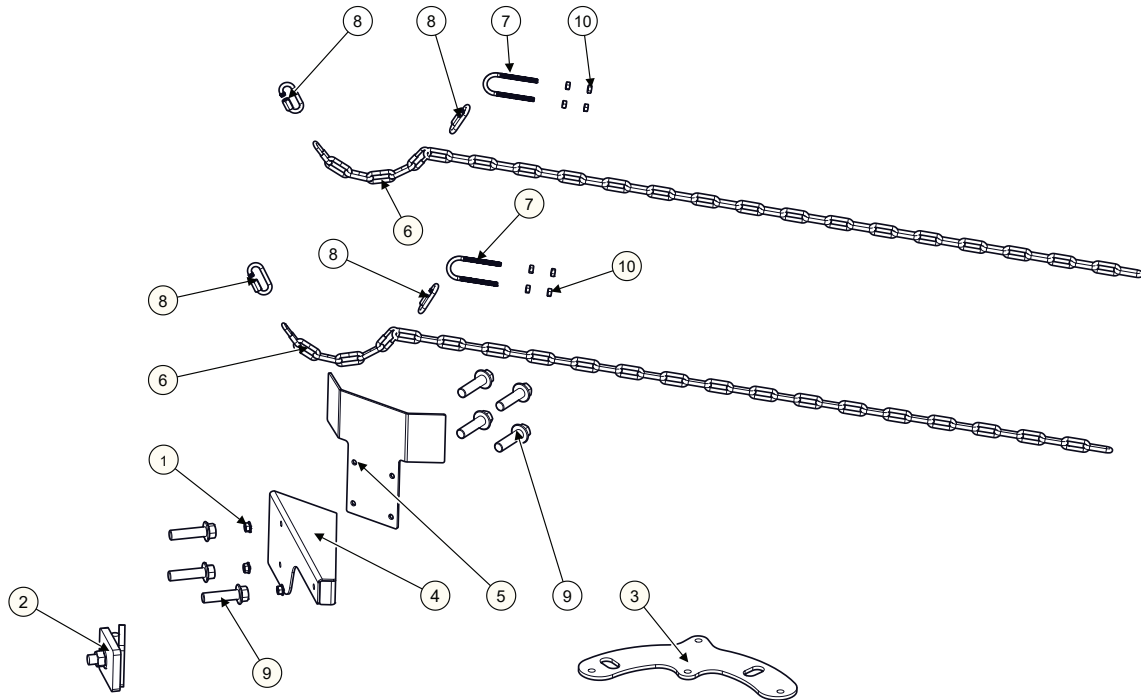
Carriage Grease Hoses



Carriage Grease Hoses			
BOM ID	Part No.	Qty	Description
1	135771	2	ADAPTER,GREASE,90°
2	135791	1	7/8" R/C W/ 3/8"HOLE
3	138011	3	GREASE ZERK, 1/4-28MTAPER
4	1393721	1	GREASE HOSE TO MASTER CYLINDER ROD END 02X71";-02MP STR SWVL X 1/8-27 NPSM STR
5	1393731	1	GREASE HOSE TO MASTER CYLINDER BASE END 02X22.75";-02MP STR SWVL X 1/8-27 NPSM STR
6	1393741	1	GREASE HOSE TO CARRIAE PIVOT PIN 02X73.75";-02MP STR SWVL X 1/8-27 NPSM STR
7	140342	1	3.00" DIA x 8.75" STROKE HCA
8	142101	6	LOOP, CLOSED, .375", R/C
9	155158	3	1/8NPSM, LINCOLN JAM NUT

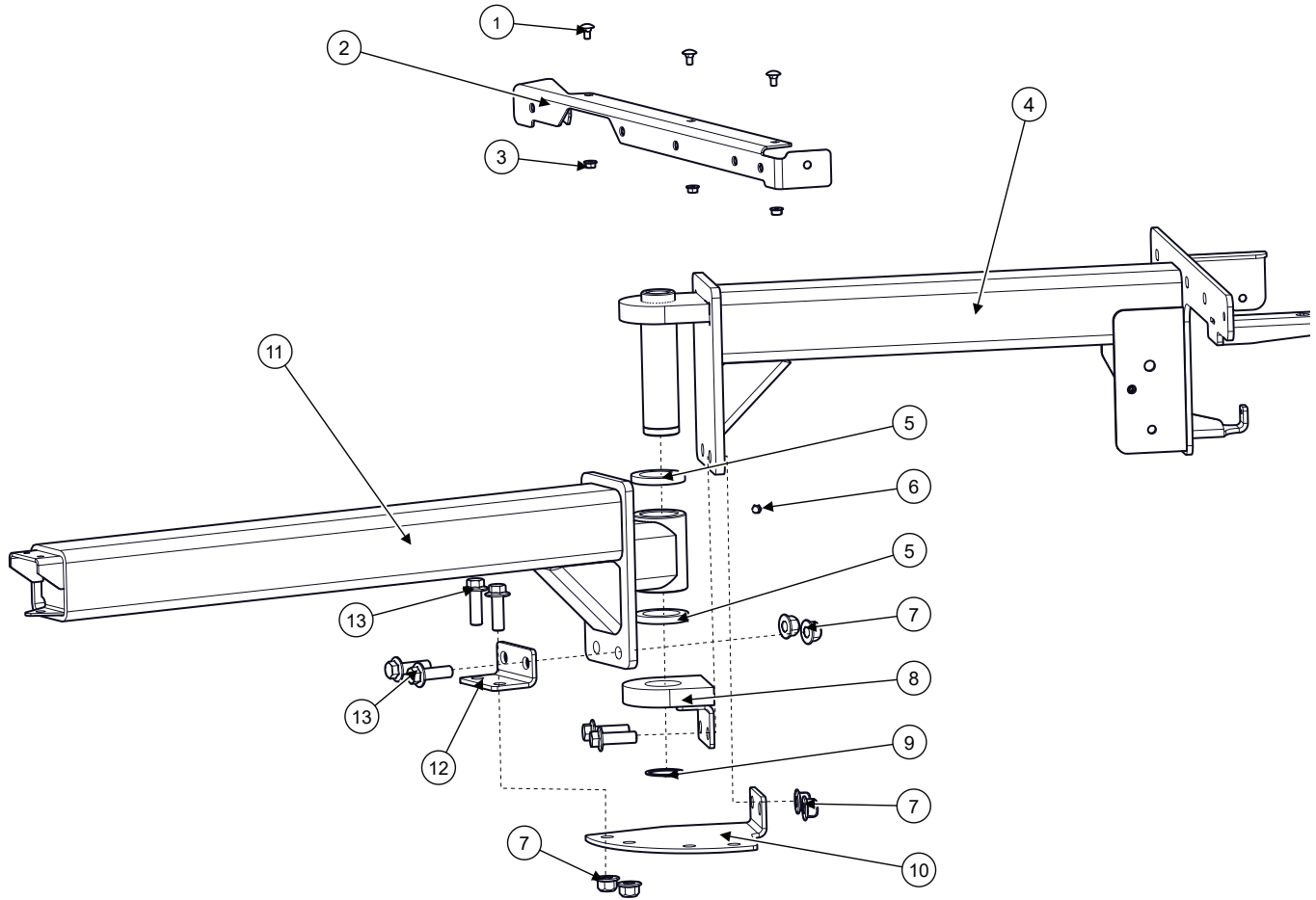
Model JH11010 Hillco Leveling System
 For Serial Numbers JH11010-25001 thru JH11010-26999

Ladder Accessories Combine SN (0 - 835000)



Ladder Components (0 - 835000)			
BOM ID	Part No.	Qty	Description
1	123.008	7	NUT, HEX, FLANGE, M8x1.25
2	1389791	1	LADDER, 1ST PIVOT WEDGE
3	1389831	1	LADDER PLATE, PIVOT LIMITER
4	1391781	1	LADDER PLATFORM EXTENSION
5	1391811	1	LADDER KICK PLATE
6	1393501	2	SAFETY CHAIN, 6 LINK, 1/4 CHAIN, PVC COATED
7	156498	2	STEEL U-BOLT, 1/4-20 THREAD, 1-1/8 ID, 3-3/16 INSIDE HEIGHT, 2-1/2" THREAD LENGTH
8	156501	4	Oval Quick Link, 1/4" Thickness, 5/16" Opening
9	122.008.020	7	BOLT, HX,FL,CL10.9 M8X1.25X20
10	-	8	1/4-20 THREAD

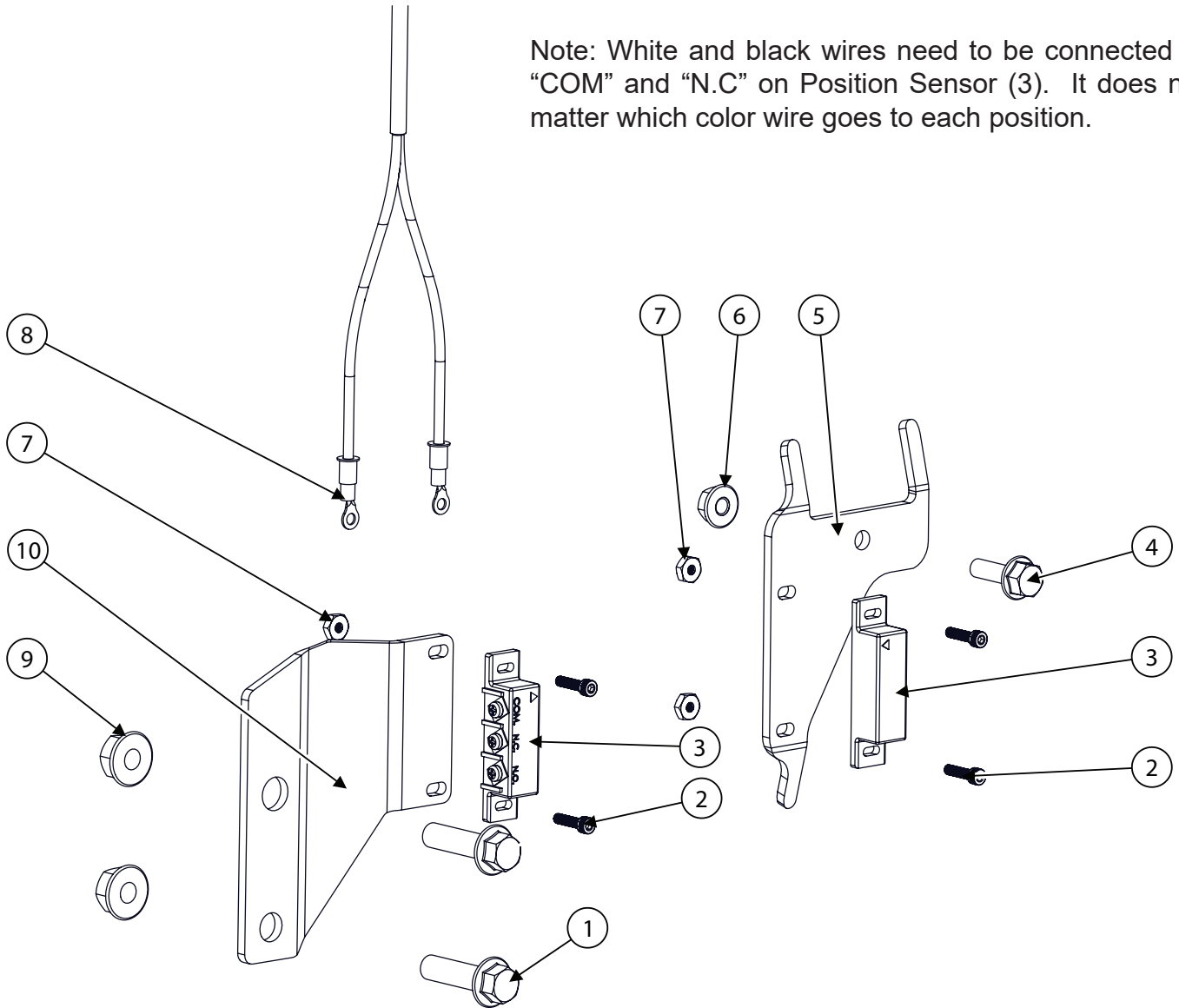
Ladder Accessories Combine SN (835001 -)



Ladder Components (835001 -)			
BOM ID	Part No.	Qty	Description
1	163.008	3	BOLT CARR, CL8, M8x25
2	1394141	1	LADDER PLATFOR EXTENSION
3	123.008	3	M8x1.25
4	1394011	1	LADDER BEAM,2107MM
5	1394171	2	PIVOT SPACER RING
6	133891	1	ZERK, GREASE, 1/8
7	128.016	6	M16x2.0,
8	1394151	1	BOTTOM PIVOT, SUPPORT
9	156505	1	SNAP RING, EXTERNAL, 2" OD SHAFT, 1.886" DIAMETER GROOVE
10	1394091	1	PIVOT ROTATION LOCK PLATE
11	1394001	1	LADDER, JH11010, INNER BEAM, 35-1/2"
12	1394161	1	ROTATION STOP BRACKET
13	122.016.050	6	BOLT, FLANGE, HEX, 10.9 GRADE, M16X50

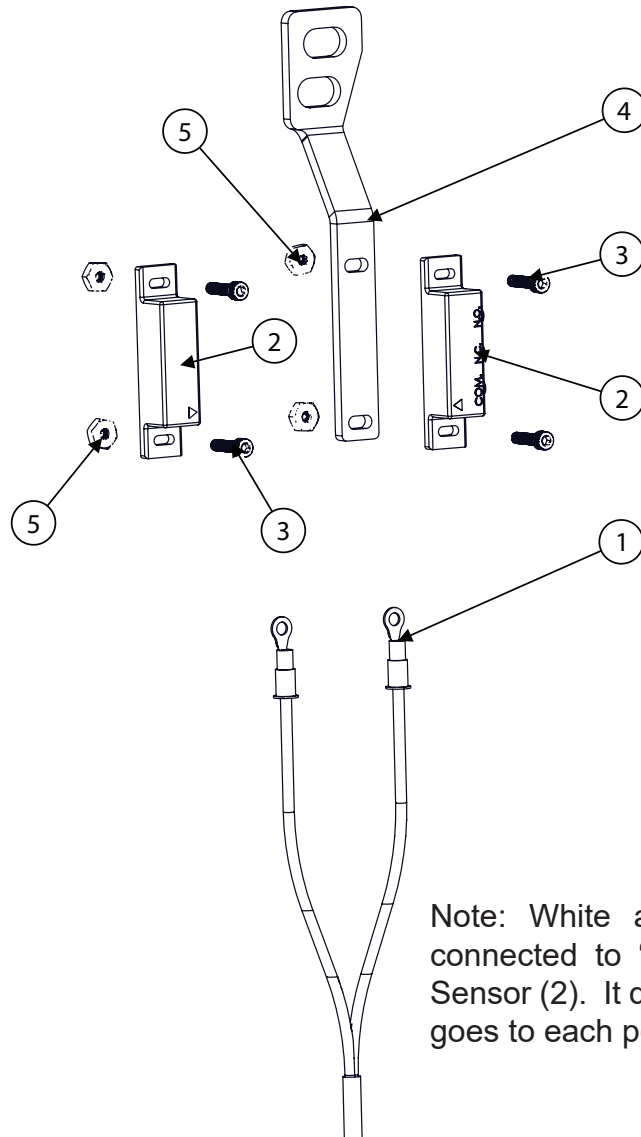
Ladder Sensor

Note: White and black wires need to be connected to "COM" and "N.C" on Position Sensor (3). It does not matter which color wire goes to each position.



Ladder Sensor			
BOM ID	Part No.	Qty	Description
1	122.008.020	2	BOLT, HX,FL,CL10.9 M8X1.25X20
2	196.05.008	4	SCREW,SHC,#5-40x1/2"
3	156494	1	MAGNETIC REED SWITCH, DC 5V, 12V, 24V, LIGHT
4	122.006.020	1	BOLT, HX,FL,CL10.9 M6X20
5	1392861	1	LADDER SENSOR, BRACKET 2, S7
6	123.006	1	FLANGE NUT, M6 X 1.0
7	168.#05	4	NUT,HX #05-40
8	1394351	1	LADDER POSITION SENSOR, HARNESS
9	123.008	2	FLANGE NUT, M8x1.25
10	1392851	1	LADDER SENSOR, BRACKET 1, S7

Premium Ladder Sensor

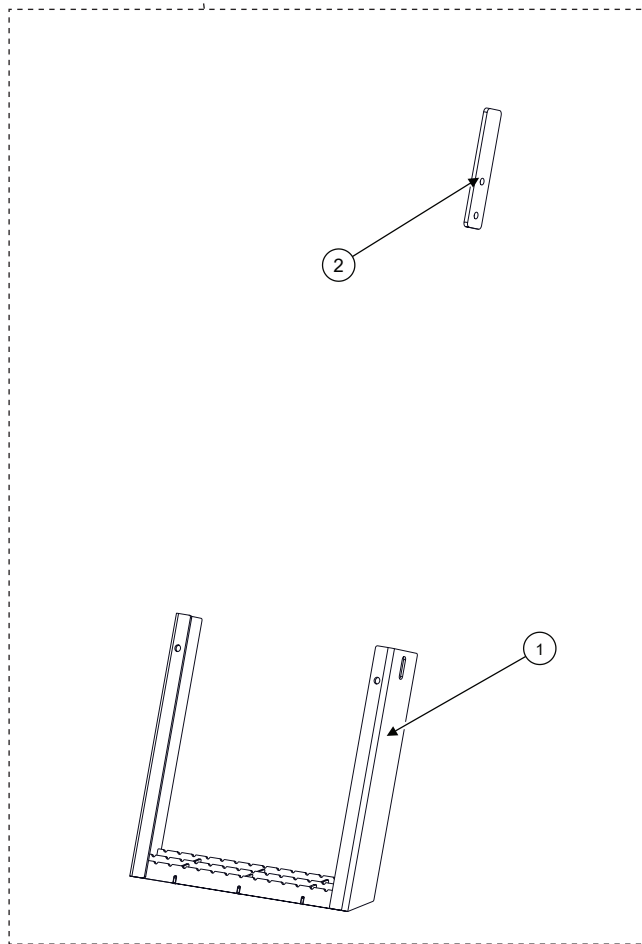
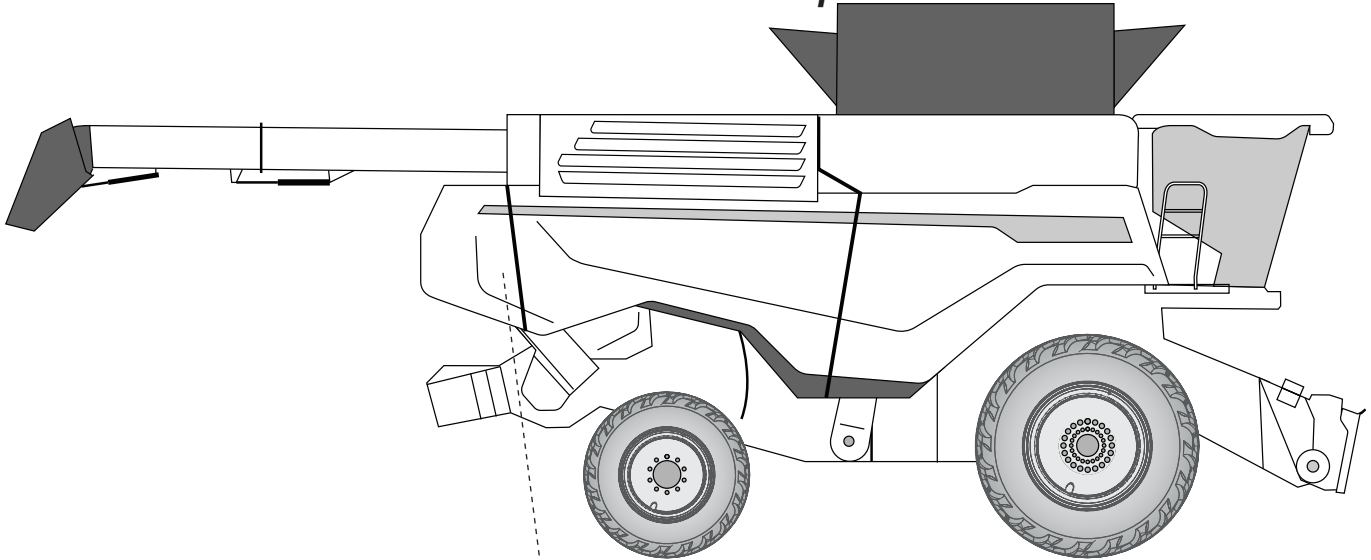


Note: White and black wires need to be connected to "COM" and "N.C" on Position Sensor (2). It does not matter which color wire goes to each position.

Premium Ladder Sensor			
BOM ID	Part No.	Qty	Description
1	1394351	1	LADDER POSITION SENSOR, HARNESS
2	156494	1	MAGNETIC REED SWITCH, DC 5V, 12V, 24V, LIGHT
3	196.05.008	4	SCREW,SHC,#5-40x1/2"
4	1392841	1	BRACKET, LADDER UP SENSOR
5	168.#05	4	NUT,HX #05-40

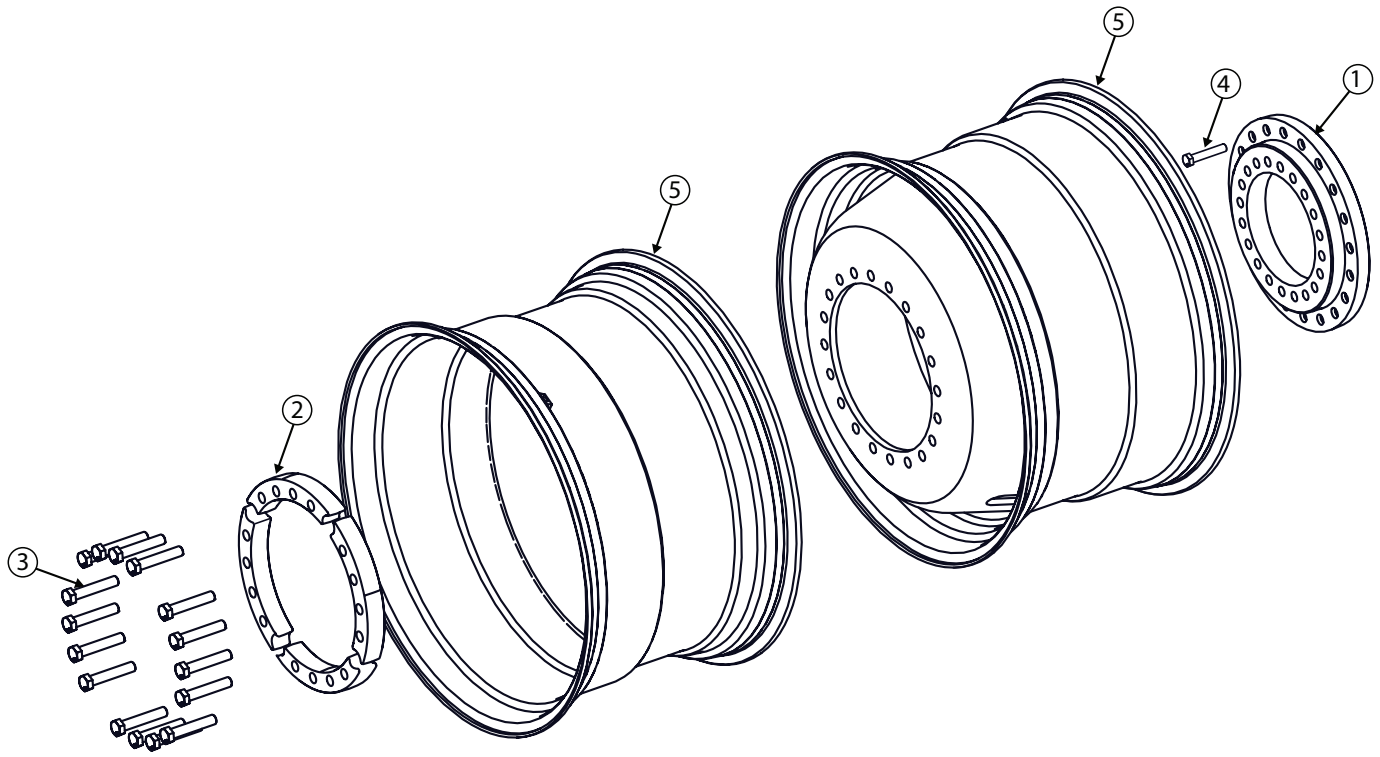
Model JH11010 Hillco Leveling System
 For Serial Numbers JH11010-25001 thru JH11010-26999

Service Step



Service Step			
BOM ID	Part No.	Qty	Description
1	1391681	1	EXTENSION, SERVICE LADDER
2	1391711	1	HANDLE EXT, SERVICE LADDER

DRIVE WHEEL

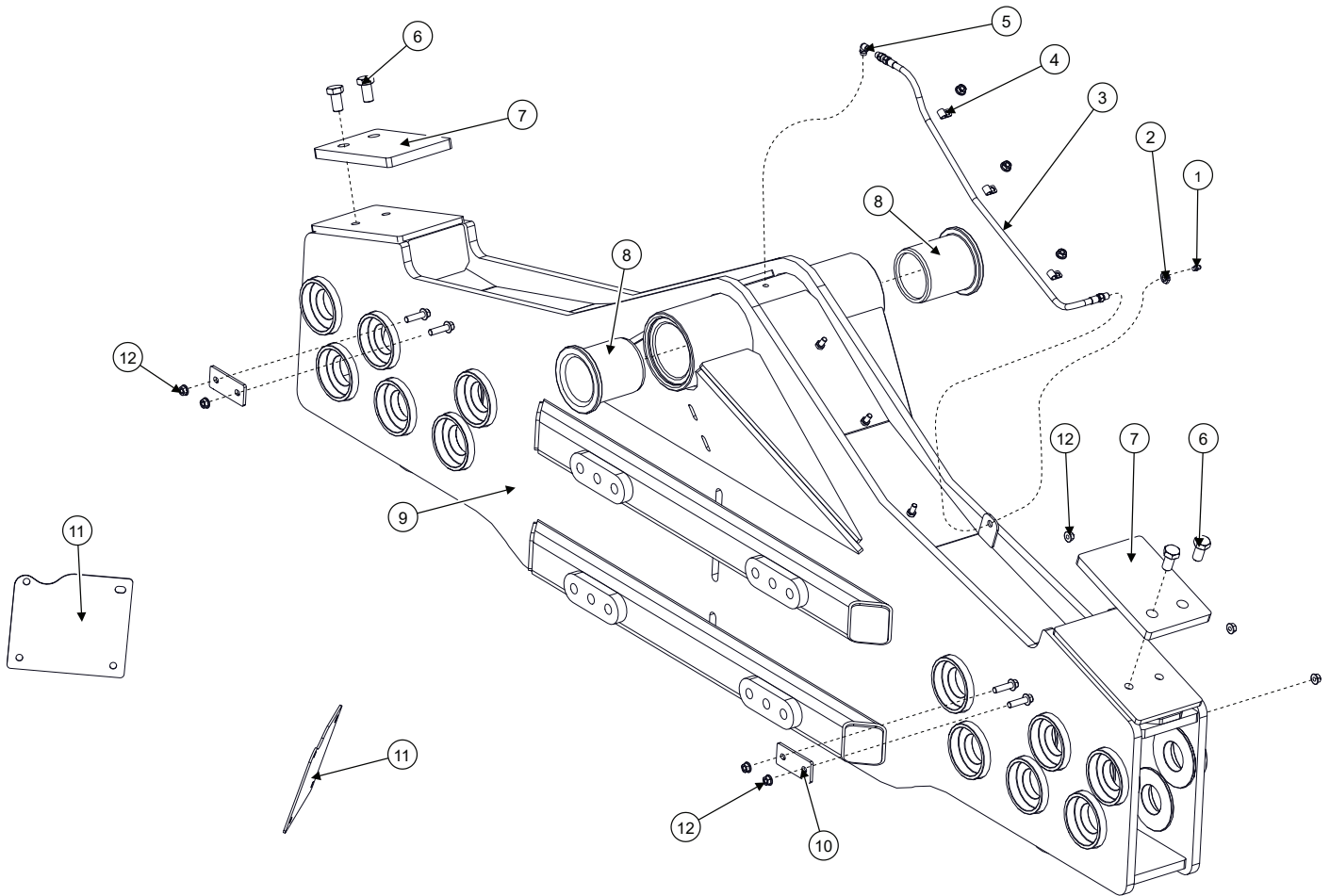


John Deere Supplies Adapter Ring, Spacers and Fasteners. Hillco Supplies the Wheel (5)

Drive Wheels (Per Side)			
BOM ID	Part No.	Qty	Description
1	HXE115124	1	ADAPTER
2	HXE115122	4	WHEEL MOUNTING SPACER
3	HXE84386	20	HEXAGONAL HEAD FLANGED
4	HXE110758	20	BOLT, HEX FLANGE, MJ22X2.5X150, 10.9
5	155949	2	WHEEL, YELLOW

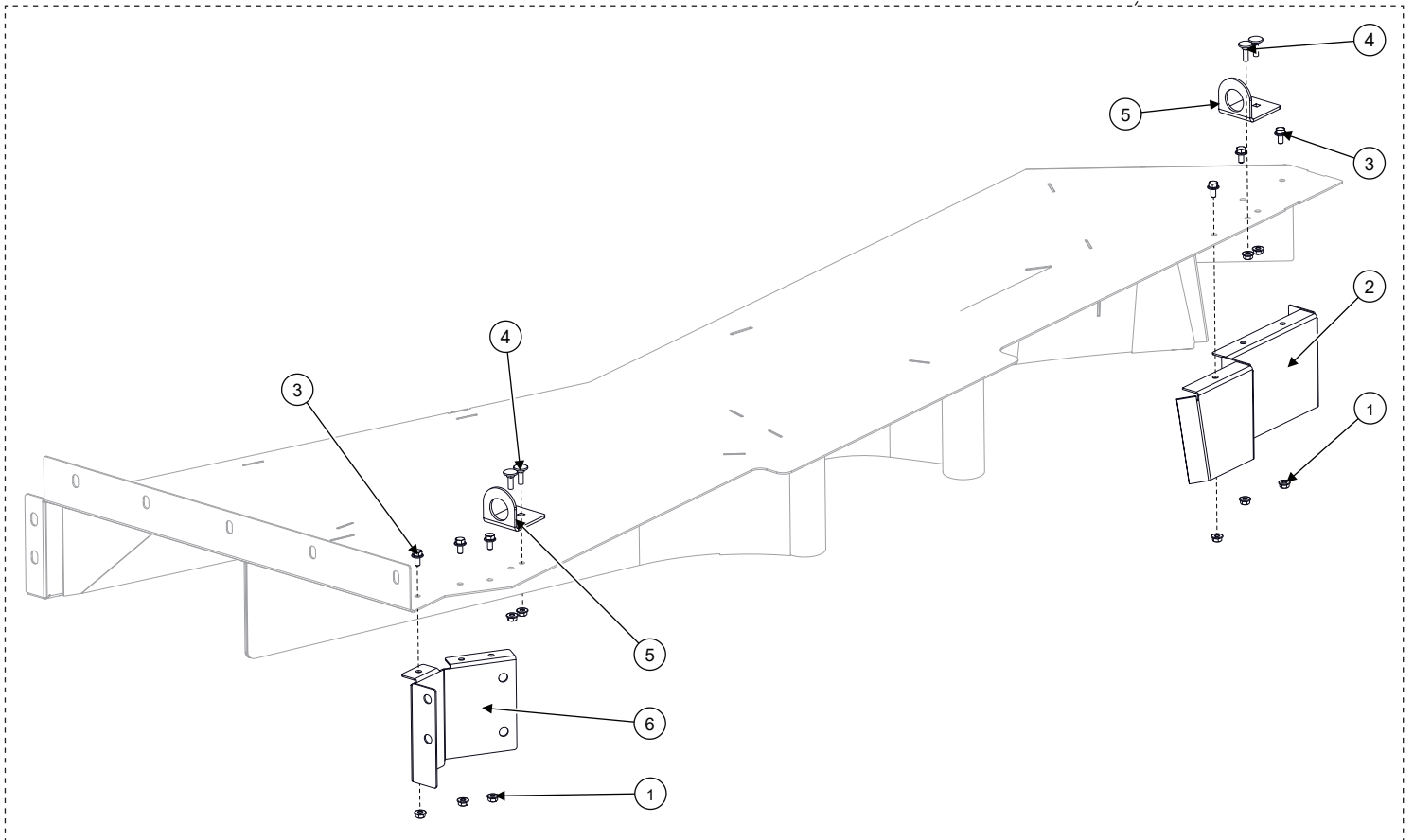
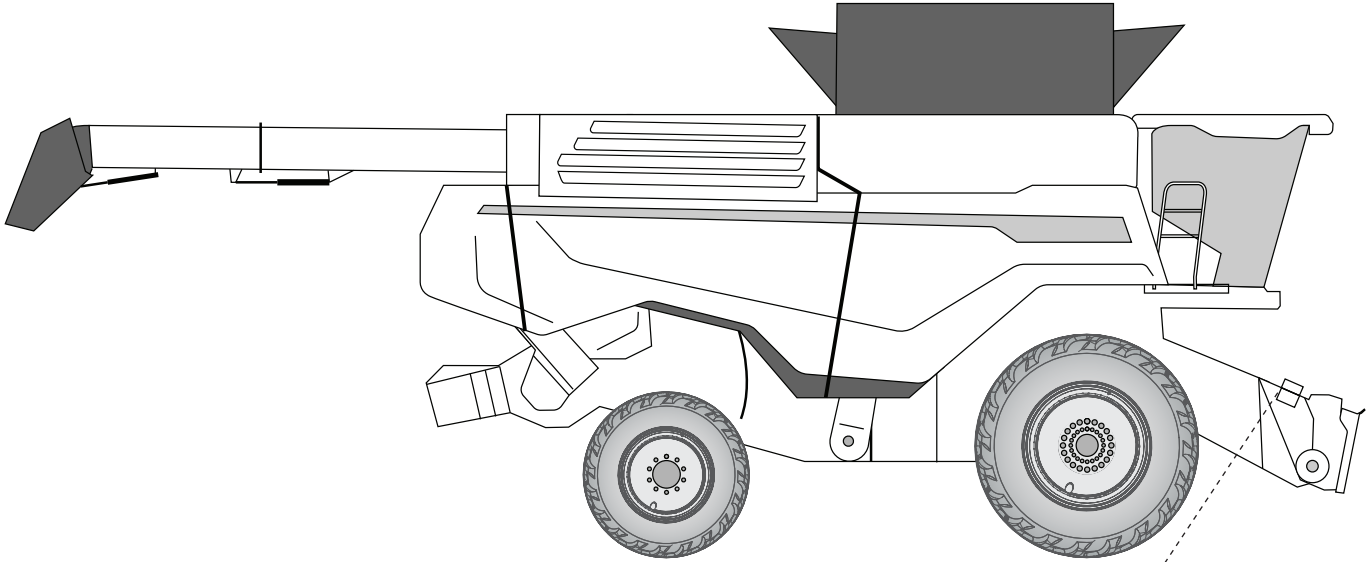
Model JH11010 Hillco Leveling System
 For Serial Numbers JH11010-25001 thru JH11010-26999

DROP AXLE



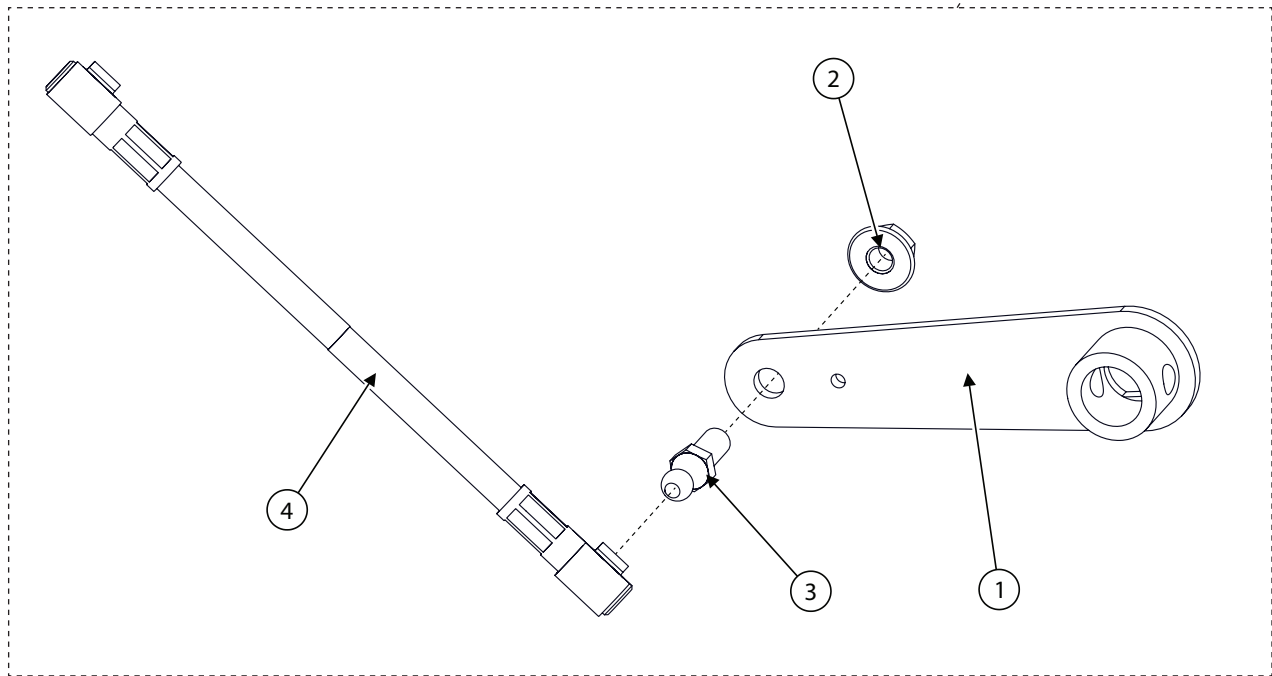
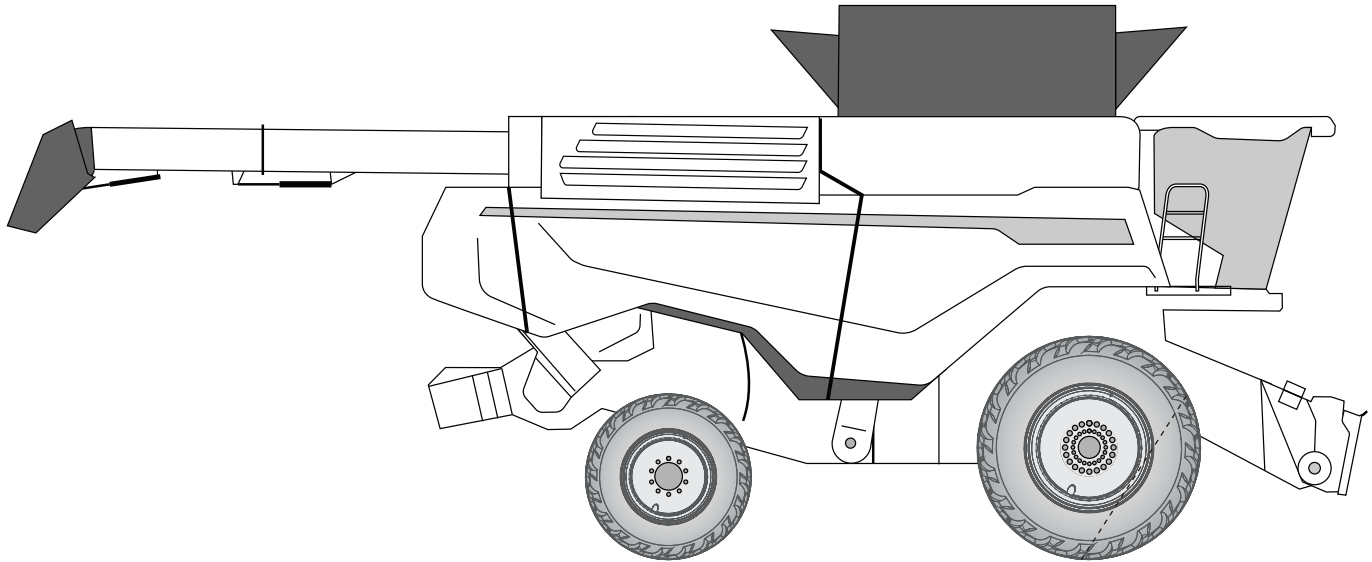
Drop Axle			
BOM ID	Part No.	Qty	Description
1	138011	1	GREASE ZERK, 1/4-28M TAPER
2	155158	1	JAM NUT, 1/8NPSM, LINCOLN
3	1392881	1	GREASE HOSE, HLB-02X27";-02MP STR SWVL X 1/8-27 NPSM STR
4	142101	3	LOOP, CLOSED, .375", R/C
5	155159	1	ADAPTER,GREASE,90°
6	120.016.030	4	BOLT,HX,GRADE 10.9, M16X30
7	1389181	2	ROTATION STOP, SPACER 0.625 INCH
8	1389161	2	PIVOT BUSHING
9	1388601	1	DROP AXLE, (JH11010)
10	1389171	2	MOUNT PLATE, HYDRAULIC HOSE
11	1391751	2	BRACKET, DA HY HOSE LOOP, DROP
12	123.008	11	NUT, M8x1.25

Feeder House Dust Mitigation Modifications



Dust Mitigation Modifications			
BOM ID	Part No.	Qty	Description
1	123.006	10	FLANGE NUT, M6 X 1.0
2	1390851	1	DUST CORNER MOD, LH
3	122.006.012	6	BOLT, HEX, FLANGE, GRADE 10.9 M6X12
4	163.006.020	4	M6x1MMx20MM
5	1390871	2	DUST COVER, FRONT ROD PIVOT
6	1390861	1	DUST CORNER MOD, RH

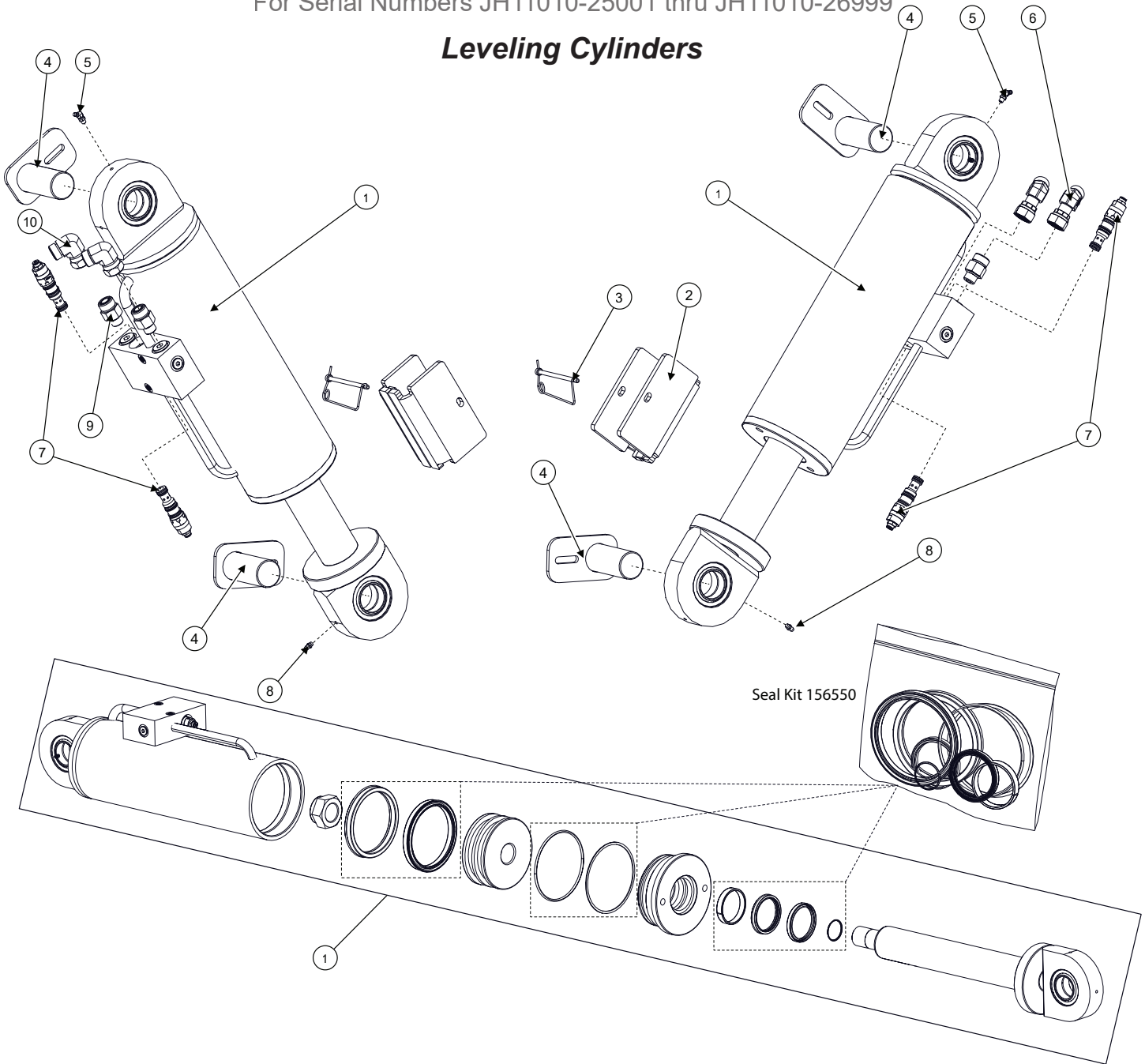
Feeder House Position Sensor Linkage



Feederhouse Position Sensor Linkage			
BOM ID	Part No.	Qty	Description
1	1394221	1	SENSOR ARM, FEEDERHOUSE
2	123.006	1	NUT, M6 X 1.0
3	151341	1	BALL STUD (H168732)
4	1394201	1	SHORTENED SENSOR LINKAGE (5.5" CENTER TO CENTER)
1-4	1394231	1	ASSEMBLY - SENSOR ARM AND LINKAGE

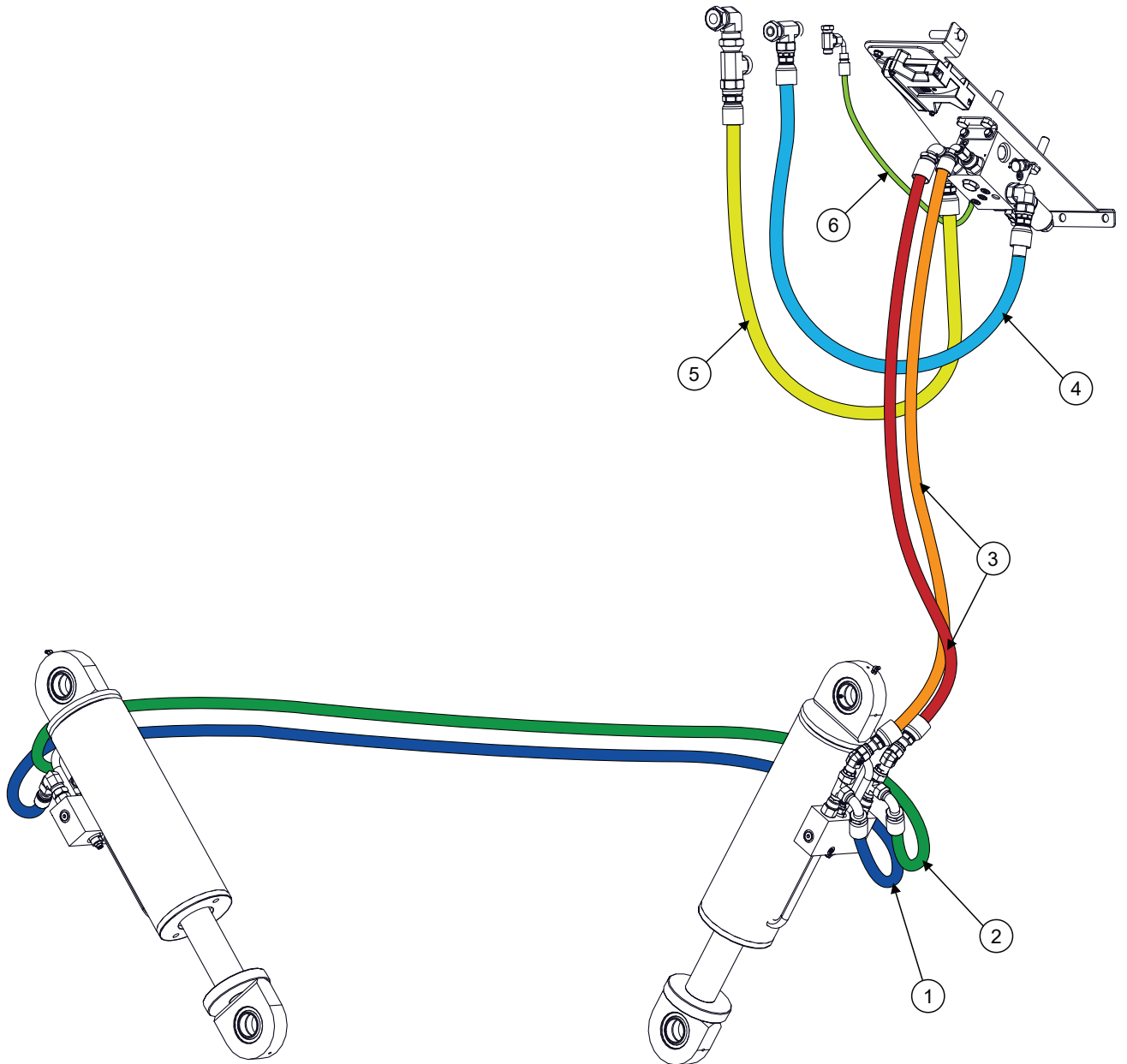
Model JH11010 Hillco Leveling System
 For Serial Numbers JH11010-25001 thru JH11010-26999

Leveling Cylinders



Leveling Cylinders			
BOM ID	Part No.	Qty	Description
1	156417	2	CYLINDER, LEVELING, DUAL CB 5-1/2" BORE, 13" STROKE, 25" CPC
-	156550	-	SEAL KIT, MAIN LEVELER CYLINDERS X9
2	1388871	2	STOP, LEVELER CYL
3	146.004.064	2	PIN,SNAP,LCK
4	1388841	4	LEVELER, CYL PIN
5	141931	2	1/4-28MTAPER
6	1005.10.10	2	-10MORSx-10FORS
7	155593	4	VALVE, COUNTERBALANCE VONBERG, 4000 PSI
8	138011	2	ZERK, 1/4-28MTAPER
9	1001.12.10	4	-12MORB X -10MORFS
10	1006.10.10	2	-10FORFS X -10MORFS

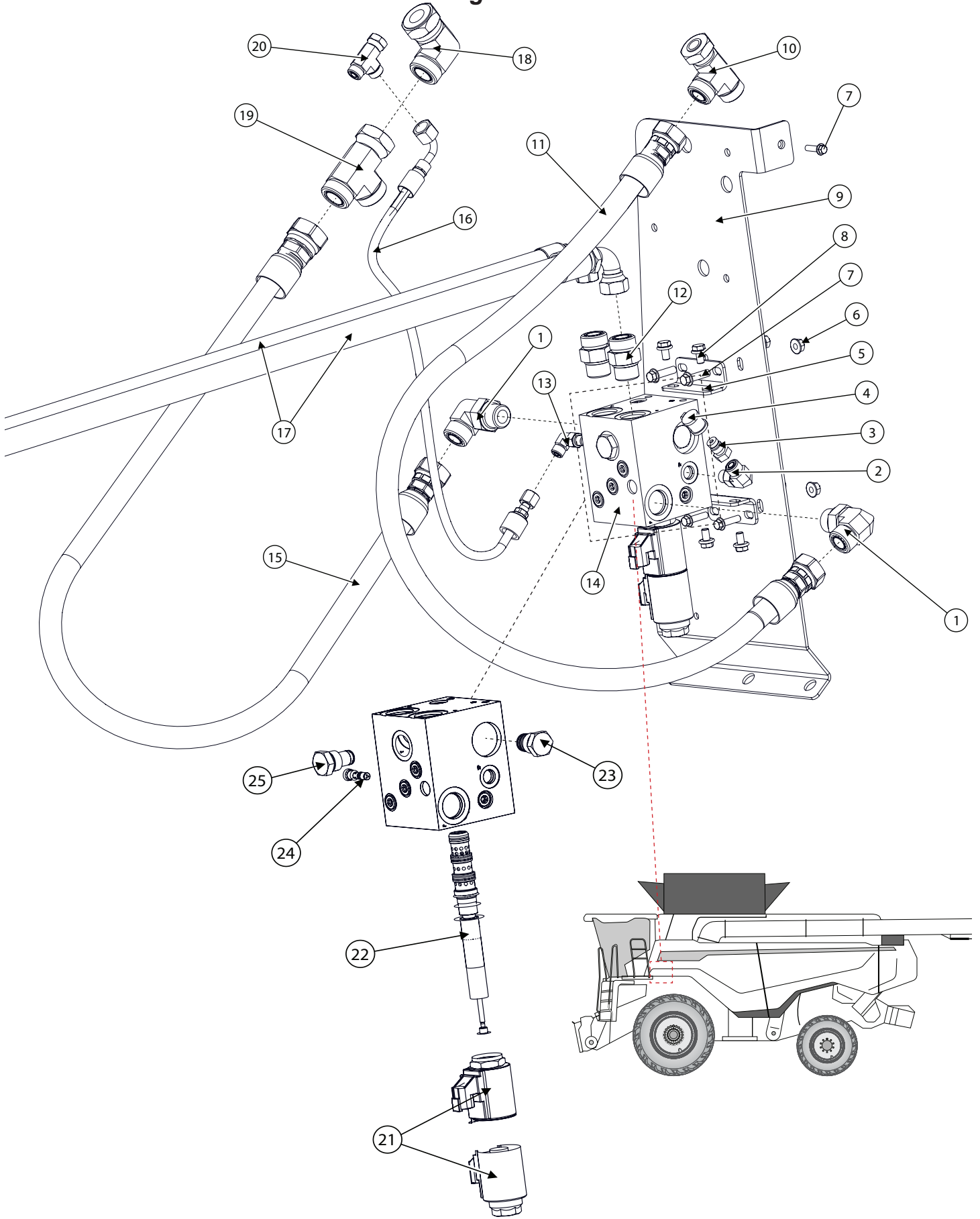
Leveling Cylinder Hoses



Leveling Cylinder Hydraulic Hoses			
BOM ID	Part No.	Qty	Description
1	1392541	1	ROD SIDE OF LH LEVELING CYLINDER TO BASE SIDE OF RH LEVELING CYLINDER HH ASM, 100R17AR -5/8 x 116",-10FORS STR; -10FORS 90° D32MM
2	1392541	1	ROD SIDE OF LH LEVELING CYLINDER TO BASE SIDE OF RH LEVELING CYLINDER HH ASM, 100R17AR -5/8 x 116",-10FORS STR; -10FORS 90° D32MM
3	1392531	2	PORT A OF LEVELING MANIFOLD TO BASE PORT OF LEFT LEVELING CYLINDER
			PORT B OF LEVELING MANIFOLD TO ROD PORT OF LEFT LEVELING CYLINDER HH ASM, 100R17AR -3/4 x 87",-10FORS STR; -12FORS 90° D48MM
4	1392501	1	HYDRAULIC PRESSURE SUPPLY TO LEVELING MANIFOLD HH ASM, 100R17AR -3/4 x 42",-12FORS STR, X -12FORS STR
5	1392511	1	HYDRAULIC RETURN FROM LEVELING MANIFOLD HH ASM, 10017AR -3/4 X 34",-12FORS STR; -16FORS STR
6	1392521	1	LEVELING MANIFOLD LOAD SENSE
			HH ASM, 100R17AR -1/4 X 28",-4FORS STR; -6FORS 90° D23MM,

Model JH11010 Hillco Leveling System
For Serial Numbers JH11010-25001 thru JH11010-26999

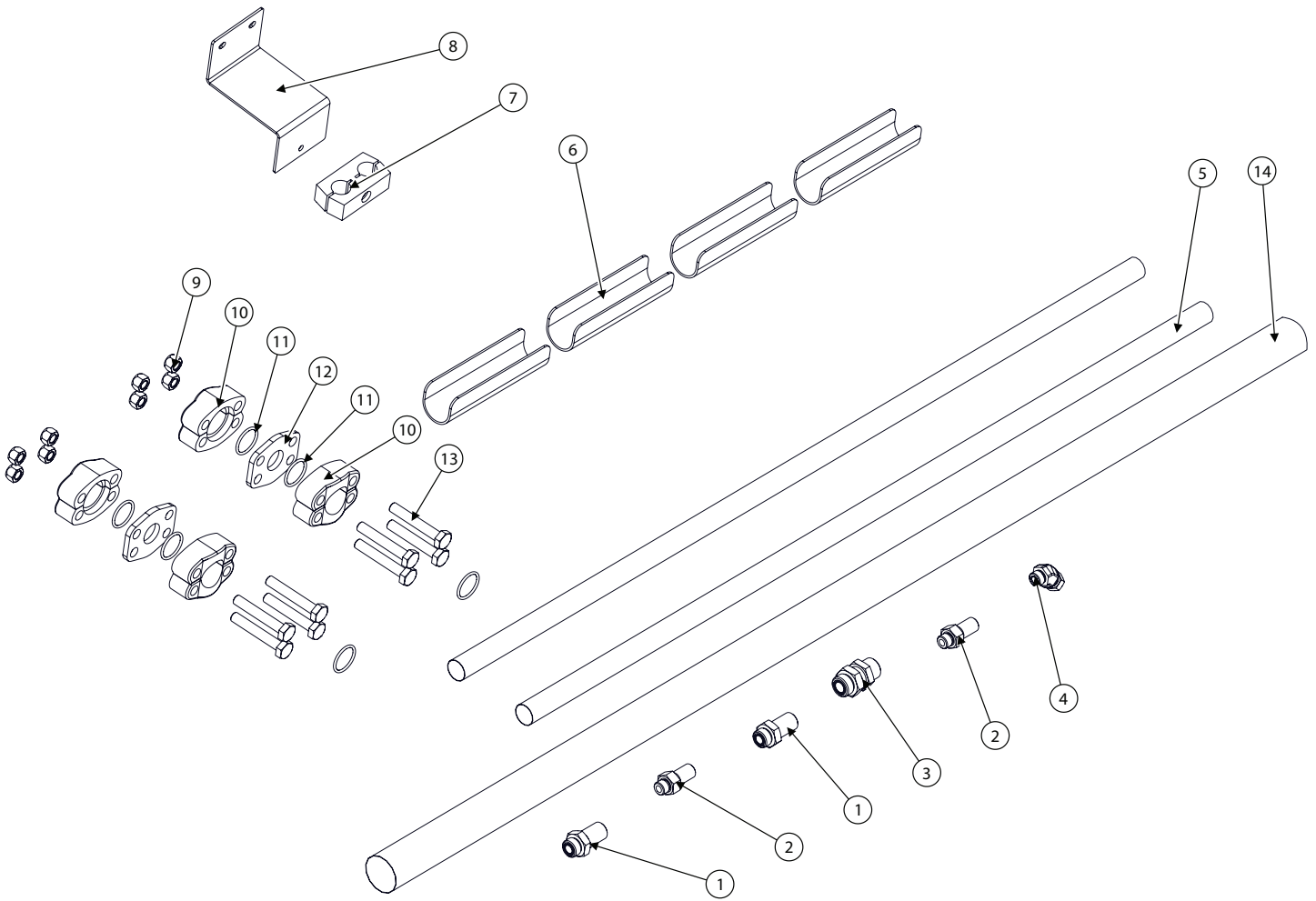
Leveling Manifold



Model JH11010 Hillco Leveling System
For Serial Numbers JH11010-25001 thru JH11010-26999

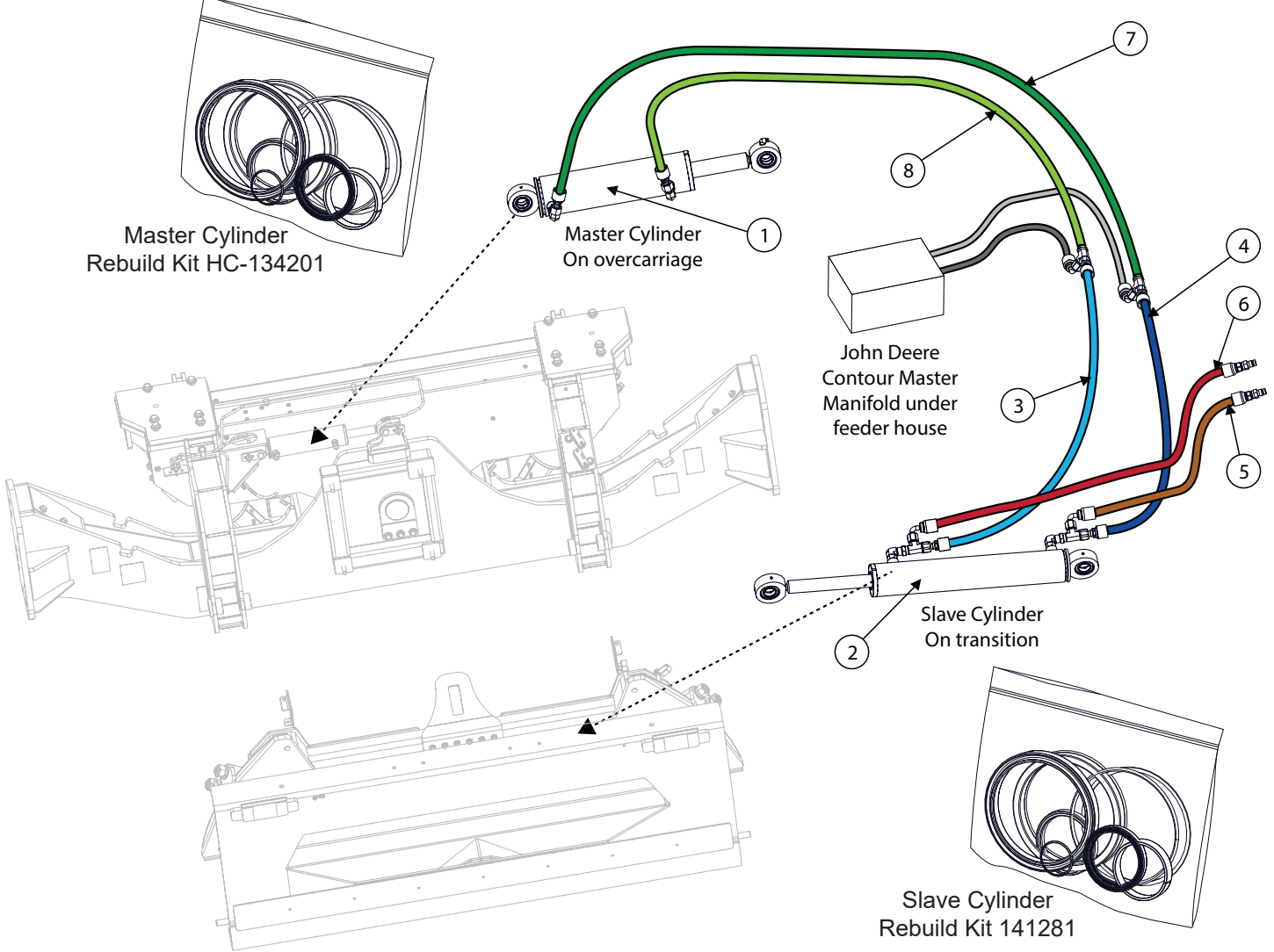
Leveling Manifold			
BOM ID	Part No.	Qty	Description
1	1003.12.12	2	HA,90°
2	1003.06.06	1	-6MORB X -6MORFS
3	155173	1	QUICK-CONNECT HYD
4	144001	1	CAP (JD#R77175)
5	1313231	2	MANIFOLD MOUNT, BASE
6	123.008	5	NUT, M8x1.25
7	122.008.020	5	BOLT, HX,FL,CL10.9 M8X1.25X20
8	111.005	4	5/16-18X1/2
9	1389741	1	MANIFOLD-CONTROLLER, MAIN BRACKET PLATE
10	1008.12	1	SWV,NUT,RUN,-12ORFS
11	1392501	1	100R17AR-12X42",-12FORS STR, X -12FORS STR
12	1001.12.12	2	HA,STR
13	1003.04.04	1	-4MORBx-4MORFS
14	1343021	1	HIGH-FLOW (COMATROL P/N11191146)
15	1392511	1	10017AR-12X34"; -12FORS STR; -16FORS STR
16	1392521	1	100R17AR-04X28"; -4FORS STR; -6FORS 90° D23MM,
17	1392531	2	100R17AR-12x87",-10FORS STR; -12FORS 90° D48MM
18	1006.16.16	1	-16FORFS x-16MORFS
19	1008.16	1	SWV,NUT,RUN
20	1008.06	1	SWIVEL NUT, RUN, -6ORFS
21	155854	2	SOLENOID COIL,M19,PROP,DEUTSCH
22	155855	1	CARTRIDGE VALVE,3 POS,4 WAY, PROPORTIONAL, 16 GPM
23	155234	1	CAVITY PLUG, 3 WAY, 10 SERIES
24	155236	1	CHECK VALVE, REVERSE DIRECTION
25	155238	1	CAVITY PLUG, 2 WAY, 10 SERIES

Hydro Hose Accessories



Hydro Hose Accessories			
BOM ID	Part No.	Qty	Description
1	1054.10	2	BKHD -10ORFS
2	1054.08.08	2	HA,BKHD,STR
3	1054.12.12	1	BKHD -12ORFS
4	1005.08.08	1	-6FORFS X -6MORFS
5	10115.00880	2	ABRASION SLEEVE, 2.19ID X 55"L
6	155535	4	HOSE PROTECTOR, 3.5" X 8"
7	154201	1	BLOCK, TWIN, 1.12"
8	1391741	1	BRACKET, HY HOSE MOUNT, GUARD
9	126.014	8	NUT, HX,STV,CL10 M14x2.0
10	147611	8	FLANGE, CODE 62, -20
11	147621	6	O-RING, CODE 62 1-1/4"
12	1272161	2	UNION, CODE 62, 1-1/4"
13	121.014.090	8	BOLT HX, CL10.9 M14X90
14	10115.01760	1	ABRASION SLEEVE, 2.19 ID X 110"

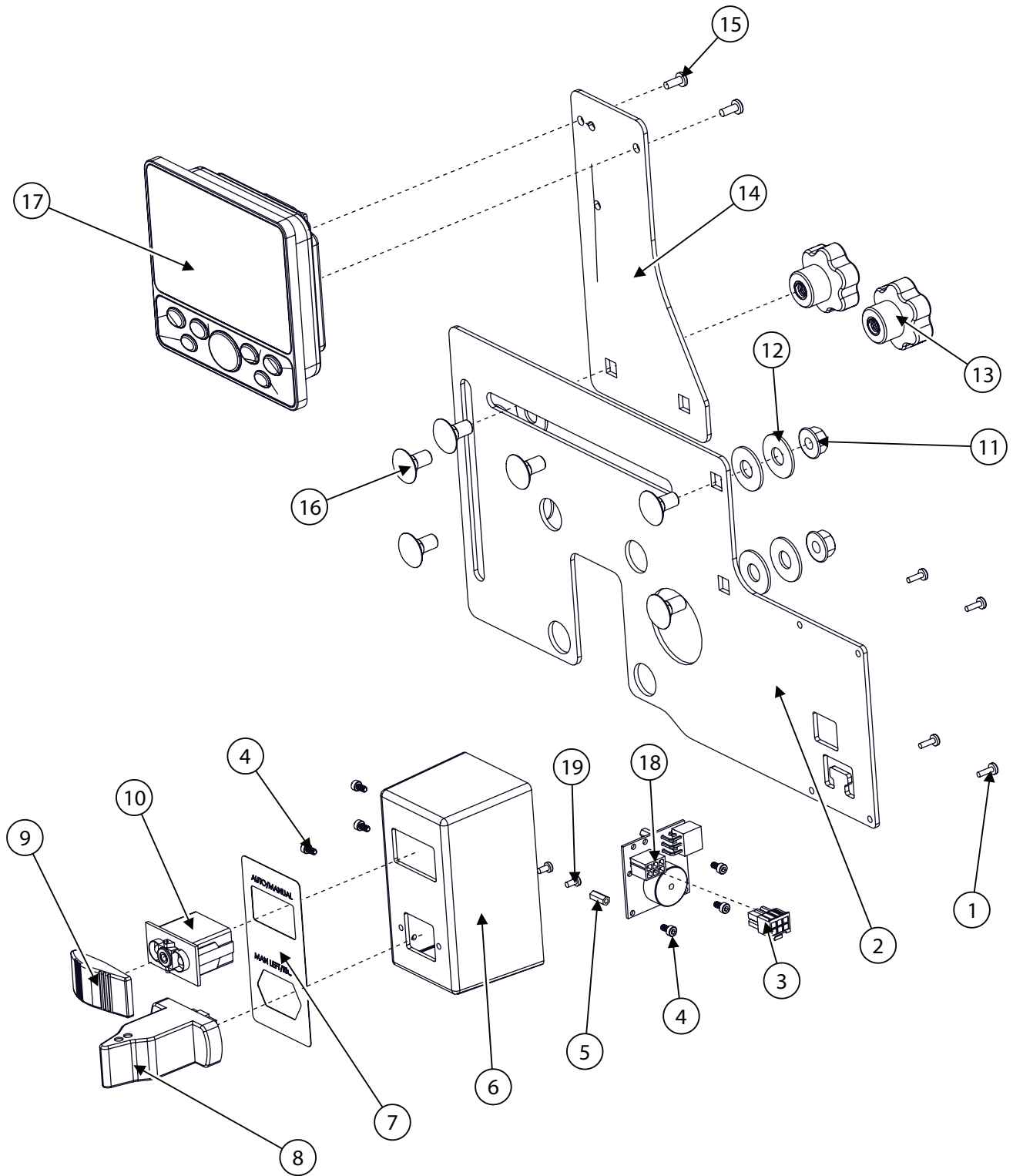
Master - Slave Cylinder Circuit



Master - Slave Cylinder Hydraulic Circuit			
BOM ID	Part No.	Qty	Description
1	140342	1	CYLINDER, MASTER, 3"B,8-3/4"S,1-3/8"R,17-1/4CPC
-	HC-134201	-	MASTER CYLINDER REBUILD SEAL KIT
2	147491	1	CYLINDER , 2-1/2"B x 12-1/2S, 21"CPC (SLAVE CYLINDER)
-	141281	-	SLAVE CYLINDER REBUILD SEAL KIT
3	1392581	1	HYD HOSE, SLAVE CYLINDER ROD PORT TO TEE
4	1392591	1	HYD HOSE, SLAVE CYLINDER BASE PORT TO TEE
5	1376031	1	HYD HOSE, SLAVE CYLINDER BASE PORT TO TEST PORT
6	1396311	1	HYD HOSE, SLAVE CYLINDER ROD PORT TO TEST PORT
7	1392611	1	HYD HOSE, MASTER CYLINDER BASE PORT TO TEE
8	1392601	1	HYD HOSE, MASTER CYLINDER ROD PORT TO TEE

Model JH11010 Hillco Leveling System
For Serial Numbers JH11010-25001 thru JH11010-26999

Monitor

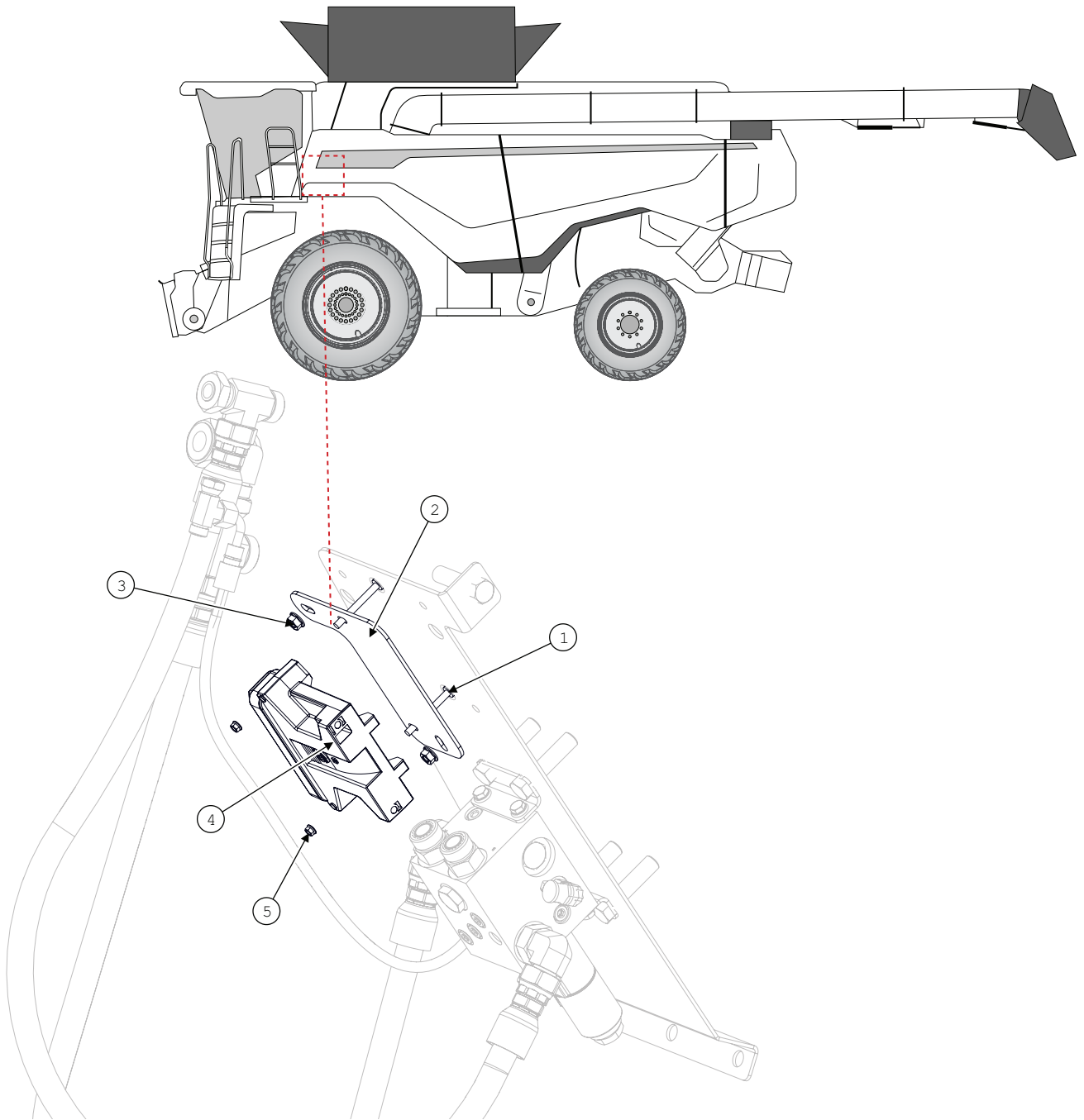


Model JH11010 Hillco Leveling System
For Serial Numbers JH11010-25001 thru JH11010-26999

Monitor			
BOM ID	Part No.	Qty	Description
1	114.#06	4	6-32X3/8
2	1380552	1	MOUNT PLATE 1, DISPLAY, GEN 5
3	1380811	1	SWITCH BOX
4	237.003.006	6	SCREW, M3X0.5, 6MM LENGTH
5	156254	3	STANDOFF, HEX, FEMALE, 4.5MM W,11MM L, M3X0.5 THRU
6	1346991	1	BOX, SWITCH MOUNT
7	155796	1	DECAL, SWITCH BOX, LEVELING SYSTEM
8	155784	1	JOYSTICK, SINGLE AXIS
9	149581	1	CONTURA BLACK ACTUATOR WAYTEK 44361
10	155785	1	SWITCH, SPST MOMENTARY
11	123.008	4	NUT, FLANGE, M8x1.25
12	105.006	8	3/8" FLAT WASHER
13	156336	2	M8 METRIC STAR SHAPED KNURLED CLAMPING NUTS, BLACK
14	1380562	1	SLIDING MOUNT PLATE, SCREEN MOUNT, GEN 5
15	171.004.010	2	SCREW, M4X10
16	163.008.016	6	BOLT CARR, CL8, M8x16
17	156038	1	MONITOR - DANFOSS, DM430E-1-0-1-0
			COMBINE SN -835000 PROGRAM PN 1392931
			COMBINE SN 835000- PROGRAM PN 1394301
18	1384781	1	JOYSTICK, BUZZER
19	171.003.006	2	SCREW,PHM,CH M3X6

Model JH11010 Hillco Leveling System
 For Serial Numbers JH11010-25001 thru JH11010-26999

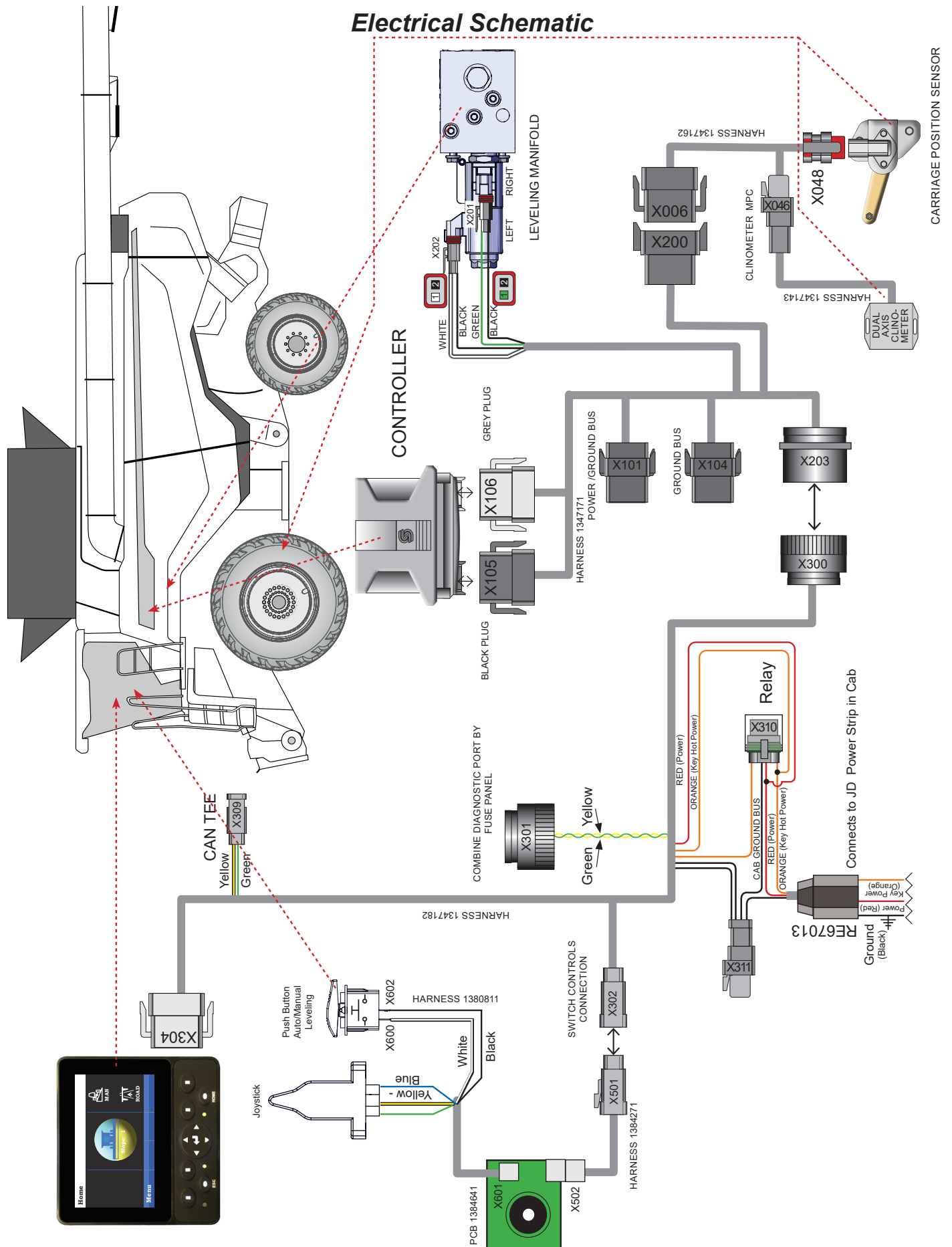
Controller



Controller			
BOM ID	Part No.	Qty	Description
1	114.004.036	2	SCREW, PHM,CH,SERR, 1/4-20x2-1/4"
2	1384111	1	MOUNT, CONTROLLER
3	123.008	2	NUT, HX,FL,CL10.9, M8x1.25
4	155713	1	CONTROLLER - SAUR-DANFOSS, 24-PIN
			COMBINE SN -835000 PROGRAM PN 1392911 COMBINE SN 835000- PROGRAM PN 1394271
5	123.008	2	NUT, HX,FL,CL10.9, M8x1.25

Model JH11010 Hillco Leveling System
 For Serial Numbers JH11010-25001 thru JH11010-26999

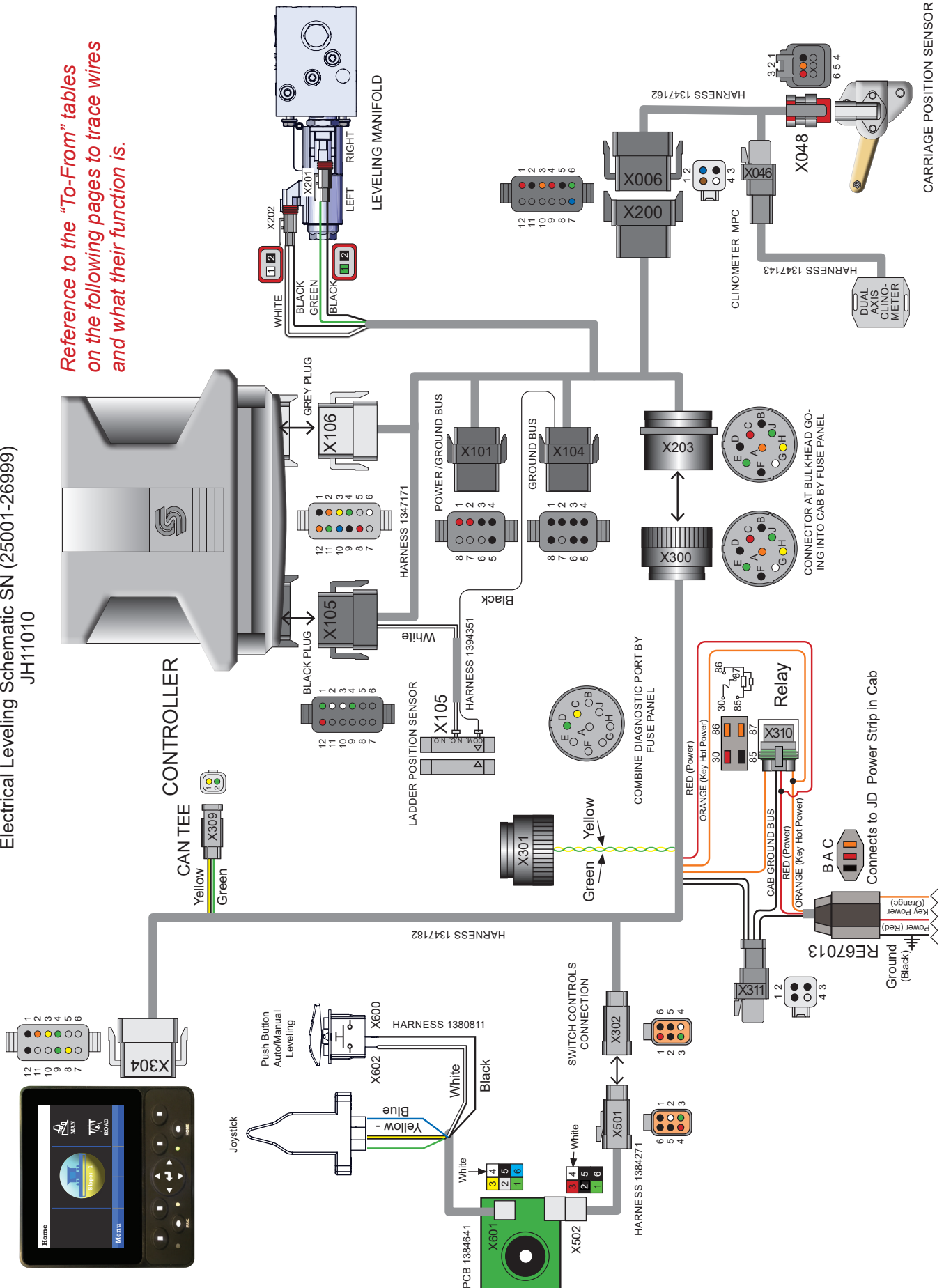
Electrical Schematic



Model JH11010 Hillco Leveling System
 For Serial Numbers JH11010-25001 thru JH11010-26999

Electrical Leveling Schematic SN (25001-26999)
 JH11010

Reference to the "To-From" tables
 on the following pages to trace wires
 and what their function is.



Model JH11010 Hillco Leveling System
For Serial Numbers JH11010-25001 thru JH11010-26999

Electrical Leveling Schematic SN (25001-26999)
JH11010

X006 - Sensor Package			To	
Pin	Wire Color	Description	Connector	Pin
1	Red	Carriage Sensor Power	X048	3
2	Black	Carriage Sensor Ground	X048	1
3	Orange	Carriage Sensor Signal	X048	2
4	Red	Clinometer Power	X046	1
5	Black	Clinometer Ground	X046	2
6	Green	Clinometer F/A Signal	X046	4
7	Blue	Clinometer L/R Signal	X046	3
8	-	-	-	-
9	-	-	-	-
10	-	-	-	-
11	-	-	-	-
12	-	-	-	-

X046 - Clinometer MPC			To	
Pin	Wire Color	Description	Connector	Pin
1	Brown	Clinometer Power	X006	4
2	Blue	Clinometer Ground	X006	5
3	Black	Clinometer L/R Signal	X006	7
4	White	Clinometer F/A Signal	X006	6

X046 - OC Position Sensor			To	
Pin	Wire Color	Description	Connector	Pin
1	Black	Carriage Sensor Ground	X006	2
2	Orange	Carriage Sensor Signal	X006	3
3	Red	Carriage Sensor Power	X006	1
4				
5				
6				

X101 - Sensor Power/Ground Bus			To	
Pin	Wire Color	Description	Connector	Pin
1	Red	Sensor Power Supply	X106	8
2	Red	Joystick Power	X203	3
3	Black	Sensor Ground Supply	X106	9
4	Black	Joystick Ground	X203	4
5	Black	UC Sensor Ground	X200	2
6	-	-	-	-
7	-	-	-	-
8	Red	UC Sensor Power	X200	1

X104 - Ground Bus			To	
Pin	Wire Color	Description	Connector	Pin
1	Black	Ground Bus	X203	2
2	Black	Controller Ground	X106	1
3	Black	Clinometer Ground	X200	4
4	Black	Left Valve Ground	X202	2
5	Black	Right Valve Ground	X201	2
6	Black	Auto Switch Ground	X203	6
7	-	-	-	-
8	-	-	-	-

X105 - Controller B Black Connector			To	
Pin	Wire Color	Description	Connector	Pin
1	Green	Joystick Signal	X203	5
2	-	-	-	-
3	White	Left Valve Power	X202	1
4	Green	Right Valve Power	X201	1
5	-	-	-	-
6	-	-	-	-
7	-	-	-	-
8	-	-	-	-
9	-	-	-	-
10	-	-	-	-
11	-	-	-	-
12	Red	Clinometer Power	X200	4

X106 - Controller A Grey Connector			To	
Pin	Wire Color	Description	Connector	Pin
1	Black	Clinometer Ground	X104	2
2	Orange	Controller Power	X203	1
3	Yellow	CAN High	X203	8
4	Green	CAN Low	X203	9
5	-	-	-	-
6	White	Auto Switch Signal	X203	7
7	-	-	-	-
8	Red	Sensor Power Supply	X101	1
9	Black	Sensor Ground Supply	X101	3
10	Blue	Clinometer Left/Right Signal	X200	7
11	Green	Clinometer Fore/Aft Signal	X200	6
12	Orange	UC Sensor Signal	X200	3

Model JH11010 Hillco Leveling System
For Serial Numbers JH11010-25001 thru JH11010-26999

Electrical Leveling Schematic SN (25001-26999)
JH11010

X200 - Sensor Package			To	
Pin	Wire Color	Description	Connector	Pin
1	Red	UC Sensor Power	X101	8
2	Black	UC Sensor Ground	X101	5
3	Orange	UC Sensor Signal	X106	12
4	Red	Clinometer Power	X105	12
5	Black	Clinometer Ground	X104	3
6	Green	Clinometer F/A Signal	X106	11
7	Blue	Clinometer L/R Signal	X106	10

X201 - Right Valve			To	
Pin	Wire Color	Description	Connector	Pin
1	Green	Right Valve Power	X105	4
2	Black	Right Valve Ground	X104	5

X202 - Left Valve			To	
Pin	Wire Color	Description	Connector	Pin
1	White	Left Valve Power	X105	3
2	Black	Left Valve Ground	X104	4

X203 - Cab Bulkhead			To	
Pin	Wire Color	Description	Connector	Pin
A	Orange	Controller Power	X106	2
B	Black	Controller Ground	X104	1
C	Red	Joystick Power	X101	2
D	Black	Joystick Ground	X101	4
E	Green	Joystick Signal	X105	1
F	Black	Auto Switch Ground	X104	6
G	White	Auto Switch Signal	X106	6
H	Yellow	CAN High	X106	3
J	Green	CAN Low	X106	4

X300 - Cab Bulkhead			To	
Pin	Wire Color	Description	Connector	Pin
A	Orange	Key Power	X310	C
B	Black	Controller Ground	X311	3
C	Red	Joystick Power	X302	1
D	Black	Joystick Ground	X302	2
E	Green	Joystick Signal	X302	3
F	Black	Auto Switch Ground	X302	5
G	White	Auto Switch Signal	X302	4
H	Yellow	CAN High	X304	7
J	Green	CAN Low	X304	8

X301 Diagnostic MPC				To	
Pin	Wire Color	Description	Connector	Pin	Pin
A	-	-	-	-	-
B	-	-	-	-	-
C	Yellow	CAN1 High	X303	7	7
D	Green	CAN1 Low	X303	8	8
E	-	-	-	-	-
F	-	-	-	-	-
G	-	-	-	-	-
H	-	-	-	-	-
J	-	-	-	-	-

X302 - Switch Box				To	
Pin	Wire Color	Description	Connector	Pin	Pin
1	Red	Joystick Power	X300	C	C
2	Black	Joystick Ground	X300	D	D
3	Green	Joystick Signal	X300	E	E
4	White	Auto Switch Signal	X300	G	G
5	Black	Auto Switch Ground	X300	F	F
6	Black	Alarm Ground	X304	12	12

X304 - Display A				To	
Pin	Wire Color	Description	Connector	Pin	Pin
1	Black	Display Ground	X310	H	H
2	Orange	Display Ground	J2	-	-
3	Yellow	Can0 High	X310	F	F
4	Green	Can0 Low	RE67013	C	C
5	-	-	X300	H	H
6	-	-	-	-	-
7	-	-	-	-	-
8	Yellow	Can1 High	X301	C	C
9	Green	Can1 Low	X301	D	D
10	-	-	-	-	-
11	-	-	-	-	-
12	Black	Alarm Ground	X302	6	6

Model JH11010 Hillco Leveling System
For Serial Numbers JH11010-25001 thru JH11010-26999

Electrical Leveling Schematic SN (25001-26999)
JH11010

X309 - CAN Tee		To		
Pin	Wire Color	Description	Connector	Pin
1	Yellow	CAN O High Tee	X300	H
			X304	7
2	Green	CAN O Low Tee	X300	J
			X304	8

Yellow wire tees with legs going to X300 pin H and X304 Pin 7. Green wire tees with legs going to X300 pin J and X304 Pin 8.

X310 - Power Distribution Tee		To		
Pin	Wire Color	Description	Connector	Pin
A	Black	Relay Ground	X311	4
B	-	-	-	-
C	Orange	Controller Power	X300	A
D	-	-	-	-
E	-	-	-	-
F	Orange	Keyed Power	RE67013	C
G	-	-	-	-
H	Red	Battery Power	RE67013	A

X311 - Cab Ground Bus		To		
Pin	Wire Color	Description	Connector	Pin
1	Black	Ground	RE37013	B
2	Black	Display Ground	X304	2
3	Black	Controller Ground	X300	B
4	Black	Relay Ground	X310	A

RE67013 - John Deere Powerstrip Connector		To		
Pin	Wire Color	Description	Connector	Pin
A	Red	Power	X310	H
B	Black	Ground	311	1
C	Orange	Key Power	X310	F
			X304	3

X501 Joystick PCB - Harness End		To		
Pin	Wire Color	Description	Connector	Pin
1	Red	Joystick Power	X501	3
2	Black	Joystick Ground	X501	4
3	Green	Joystick Signal	X501	1
4	White	Auto Switch Signal	X501	6
5	Black	Auto Switch Ground	X501	5
6	Black	Alarm Ground	X501	2

X502 Joystick PCB - Switchbox End		To		
Pin	Wire Color	Description	Connector	Pin
1	Green	Joystick Signal	X502	3
2	Black	Alarm Ground	X502	6
3	Red	Joystick Power	X502	1
4	Black	Joystick Ground	X502	2
5	Black	Auto Switch Ground	X502	5
6	White	Auto Switch Signal	X502	4

X600 - Auto Switch Ground		To		
Pin	Wire Color	Description	Connector	Pin
1	Black	Auto Switch Ground	X601	5

X601 - Joystick/Auto Switch		To		
Pin	Wire Color	Description	Connector	Pin
1	Green	Joystick Signal	Joystick	-
2				
3	Yellow	Joystick Power	Joystick	-
4	Blue	Joystick Ground	Joystick	-
5	Black	Auto Switch Ground	X600	-
6	White	Auto Switch Signal	X602	-

X602 - Auto Switch Signal		To		
Pin	Wire Color	Description	Connector	Pin
1	White	Auto Switch Signal	X601	6

X701 - Ladder Position Sensor		To		
Pin	Wire Color	Description	Connector	Pin
COM.	Black	Ground	X104	8
N.C.	White	Ground	X105	2

Note: Black and white wires can be flipped on Sensor End

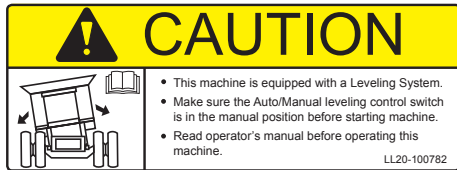
Decals and Literature



1) 133741



2) 151041



3) 100782



4) 100783



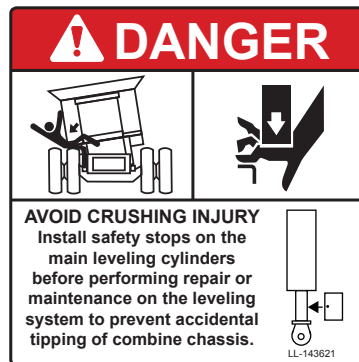
5) 100784



6) 147651



7) 100788



8) 143621

Model JH11010 Hillco Leveling System
For Serial Numbers JH11010-25001 thru JH11010-26999



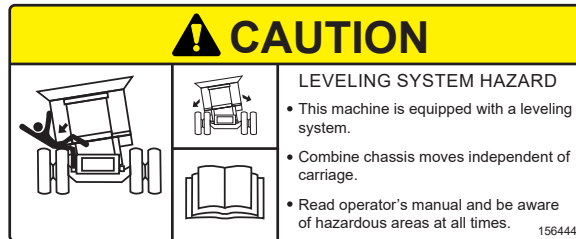
9) 156210



10) 156328



11) 156329



12) 156444

Safety Decals			
BOM ID	Part No.	Qty	Description
1	133741	6	50HRS GREASE
2	151041	2	DECAL, HILLSIDE
3	100782	1	LEVELING SYSTEM
4	100783	4	CRUSH HAZARD
5	100784	2	PINCH POINT
6	147651	1	MEMBER TAG
7	100788	3	HYDRAULIC HAZARD
8	143621	2	CRUSHING INJURY
9	156210	1	DECAL, HILLCO MADE IN USA
10	156328	2	DECAL, JACKING LOCATION
11	156329	2	DECAL, TIE DOWN LOCATION
12	156444	2	CAUTION, CHASSIS HAZARD

