

Model 2955S
Sidehill Leveling System
Parts Manual

SN 2955S-1201 thru 2955S-1299

D-070328ADL01A



TABLE OF CONTENTS

| | |
|--|------------|
| 1 GENERAL INFORMATION | 1-3 |
| Serial Number Location | 1-3 |
| Text Format and Illustrations | 1-3 |
| Abbreviations..... | 1-3 |
| Right and Left Identification | 1-3 |
| Parts Orders | 1-3 |
| 2 TRANSITION | 2-1 |
| Transition Fasteners..... | 2-3 |
| 3 CARRIAGE | 3-1 |
| Carriage Fasteners..... | 3-3 |
| Shift Linkage Assembly | 3-5 |
| 4 DROP AXLE | 4-1 |
| 5 ELECTRICAL BOX AND CONNECTORS | 5-1 |
| Electrical Cables..... | 5-3 |
| 6 HYDRAULICS | 6-1 |
| Hydraulic Manifold..... | 6-3 |
| Hydraulic Hoses | 6-7 |
| Hydraulic Adapters | 6-8 |
| 7 MISCELLANEOUS | 7-1 |
| 8 PART NUMBER INDEX | 8-1 |
| Part Number Index (Continued)..... | 8-2 |

Model 2955S Hillco Leveling System
For Serial Numbers 2955S-1201 thru 2955S-1299

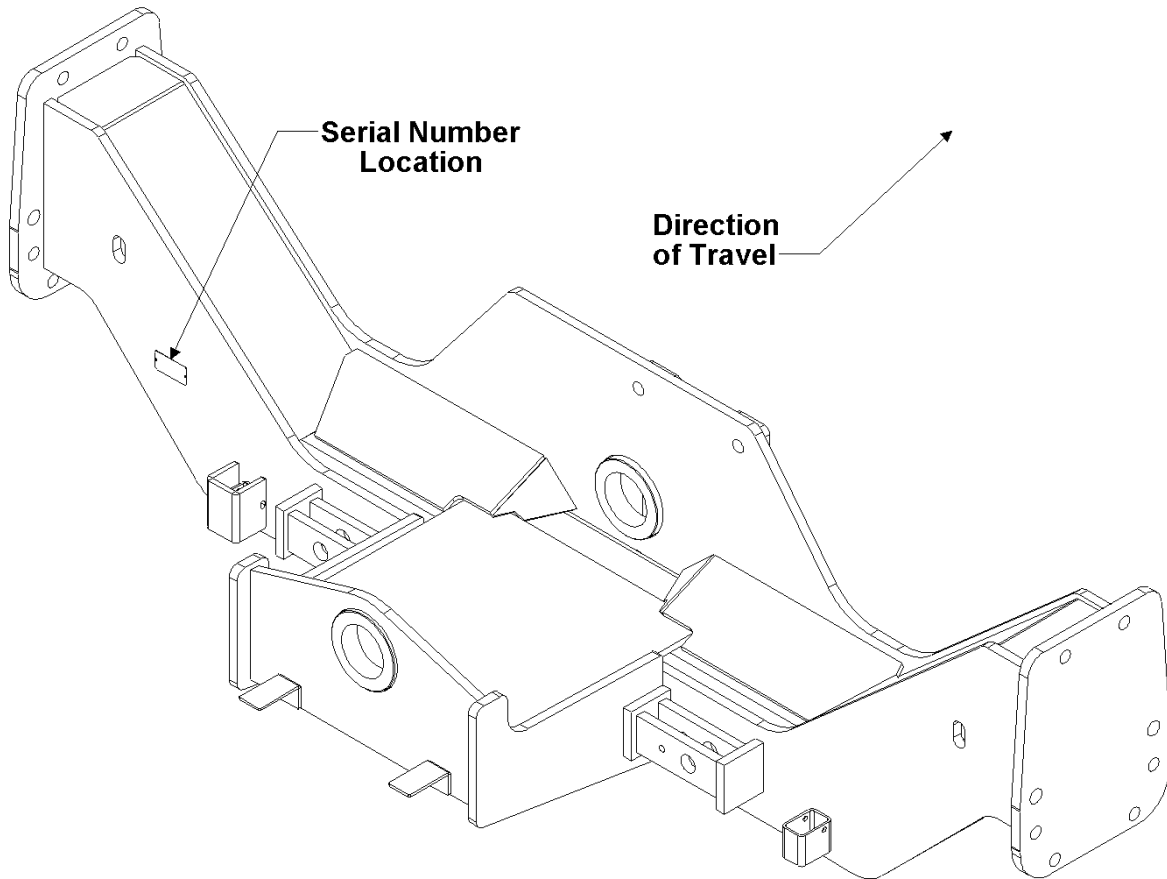
Hillco Technologies, Inc.
107 1st Avenue
Nezperce Id. 83543

| | |
|-----------|--------------|
| Fax | 208.937.2280 |
| Phone | 208.937.2461 |
| Toll Free | 800.937.2461 |

www.hillcotechnologies.com

1 GENERAL INFORMATION

SERIAL NUMBER LOCATION



TEXT FORMAT AND ILLUSTRATIONS

The arrangement of this parts catalog is for easy identification of parts. All parts are illustrated in exploded views in proper relation to each other. Some diagrams refer to other pages for further information. Reference numbers used in the illustrations refer to line numbers in the part lists. The part lists appear to the right of all diagrams and correspond with those diagrams. Included in the part lists, along with the reference numbers are part numbers, part descriptions and the quantity of the part required per leveling system.

ABBREVIATIONS

SN "Serial Number" refers to the serial number given to each leveling system (by Hillco Technologies), as well as the serial number given to the combine (by the specific combine manufacturer) the leveling system is installed upon. This abbreviation is used interchangeably in both instances. Each model 2955S Leveling System uses the following serial number format: 2955S-XXXX (sequential numbers).

ASM "Assembly" refers to a whole grouping of parts (usually shown in the diagram corresponding with the page where "ASM" is shown unless otherwise noted). Some assemblies have parts that are sold separately, however some must be purchased as a single unit. Hillco Product Specialists will be able to assist you with any questions.

NS "Not Shown" refers to a part that is not depicted in the illustration.

RIGHT AND LEFT IDENTIFICATION

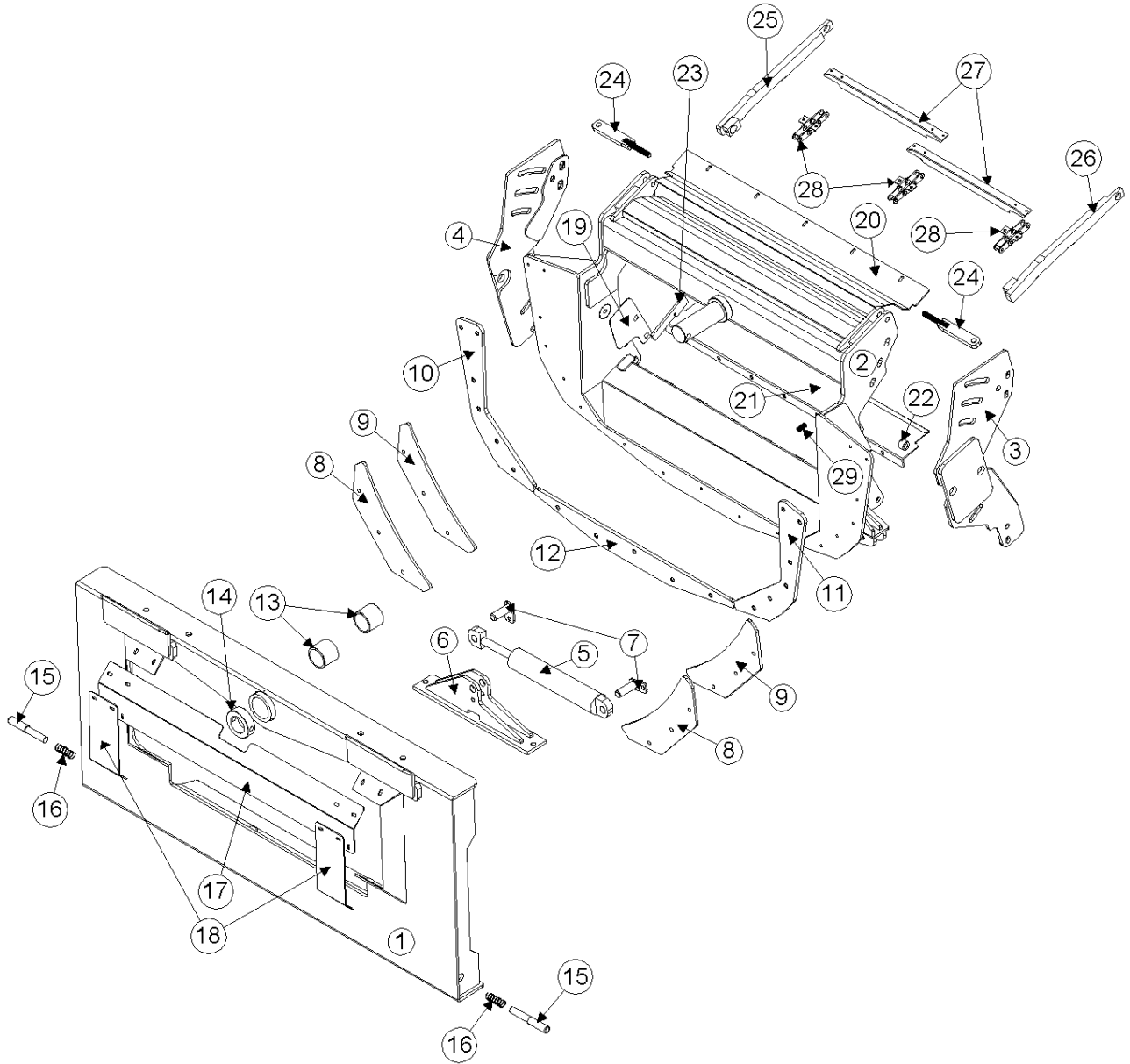
The reference to right-hand and left-hand in this catalog is identified by the operator sitting in the operator's seat, looking toward the front of the machine (in normal forward travel).

PARTS ORDERS

Orders must specify product model, serial number, correct part number, complete description, quantity required, method of shipment, shipping address, and billing address.

Model 2955S Hillco Leveling System
For Serial Numbers 2955S-1201 thru 2955S-1299

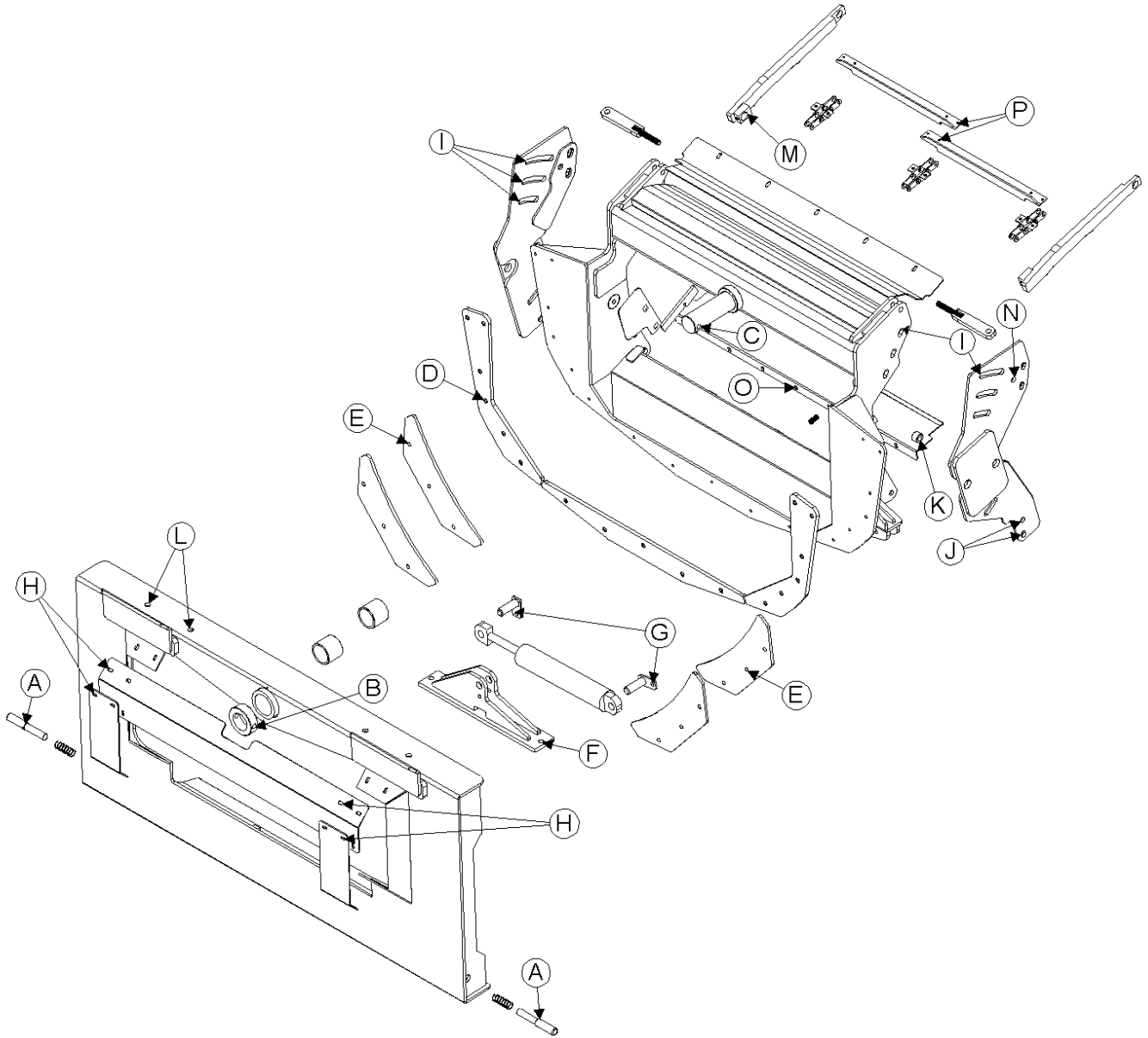
2 TRANSITION



Model 2955S Hillco Leveling System
For Serial Numbers 2955S-1201 thru 2955S-1299

| TRANSITION COMPONENTS | | | | |
|------------------------------|-----------------|-------------|--|---------------------------------------|
| REF. | PART NO. | QTY. | PART NAME | NOTES |
| 1 | LA-253163 | 1 | TA ASM | |
| 2 | LA-253223 | 1 | TT ASM, FRONT | |
| 3 | LA-260891 | 1 | TT ASM, REAR LEFT | |
| 4 | LA-260771 | 1 | TT ASM, REAR RIGHT | |
| 5 | HC-138581 | 1 | CYLINDER, SLAVE | **SEE HYDRAULIC PAGE 8-2 |
| 6 | LA-250713 | 1 | TM ASM, SLAVE CYLINDER ROD MOUNT | |
| 7 | LA-253883 | 2 | LM ASM, PIN | |
| 8 | LP-250551 | 2 | TM UHMW, BACKING WEARPAD | |
| 9 | LM-250541 | 2 | TM PLT, BACKING | |
| 10 | LM-250571 | 1 | TM UHMW, RIGHT WEARPAD | |
| 11 | LM-250561 | 1 | TM UHMW, LEFT WEARPAD | |
| 12 | LM-250581 | 1 | TM UHMW, BOTTOM WEARPAD | |
| 13 | LTP-241721 | 2 | BUSHING, PIVOT | |
| 14 | LM-226841 | 1 | TM COLLAR, PIVOT | |
| 15 | LM-229192 | 2 | TM ROD, LOCK | |
| 16 | MC-135531 | 2 | TM SPRING, LOCK PIN | |
| 17 | LP-253452 | 1 | TM PLATE, TOP SHIELD | |
| 18 | LP-250534 | 2 | TM PLT, LEFT & RIGHT SHIELD | |
| 19 | LP-260791 | 2 | TM SHEET, ANTI-LEAK | |
| 20 | LP-260901 | 1 | TM SHIELD, TOP | |
| 21 | LP-260911 | 1 | TM PLATE, FLEX FLOOR | |
| 22 | LM-260821 | 2 | TM BUSHING, PIVOT OUTER | |
| 23 | LP-261351 | 2 | TM UHMW, THROAT SEAL | |
| 24 | LA-261021 | 2 | TM ASM, DRAG LINK | |
| 25 | LA-260851 | 1 | TM ARM ASM, FEEDER DRUM RHT | |
| 26 | LA-260861 | 1 | TM ARM ASM, FEEDER DRUM LFT | |
| 27 | MC-143451 | 2 | FEEDER CHAIN SLAT, 9560 STS | JD PART NUMBER H203392 |
| 28 | MC-143632 | 3 | CA 557 FEEDER CHAIN, 4-PIN | LENGHTENS ORIGINAL FEEDER HOUSE CHAIN |
| 29 | MC-143591 | 7 | SPRING, COMPRESSION .703 OD X 1.09 LENGTH X .125 WIRE DIA. | |
| NS | MC-140261 | 3 | CONNECTING LINK, JD HD CHAIN | |
| NS | MC-142261 | 6 | S-WIRE KEEPER PINS | JD PART NUMBER H204865 |

Model 2955S Hillco Leveling System
For Serial Numbers 2955S-1201 thru 2955S-1299
TRANSITION FASTENERS



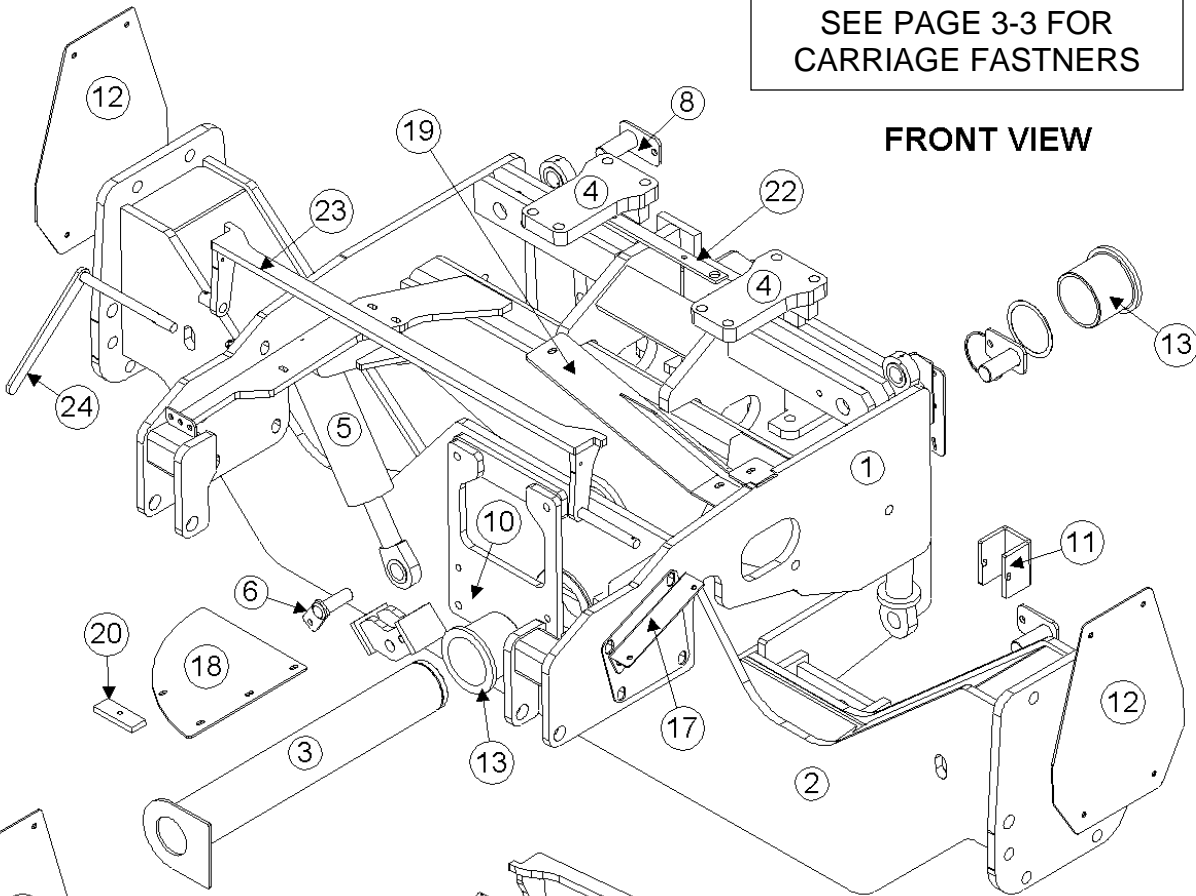
Model 2955S Hillco Leveling System
For Serial Numbers 2955S-1201 thru 2955S-1299

| TRANSITION FASTENERS | | | | |
|-----------------------------|-----------------|-------------|------------------------------|---|
| REF. | PART NO. | QTY. | PART NAME | WHERE USED |
| A | F-HC-10M070E | 2 | HC-10.9 M10 X 1.5 X 70 | HEADER LOCK PINS |
| B | F-HC-16M120E | 1 | HC-10.9 M16 X 2.00 X 120 | MAIN PIVOT PIN COLLAR |
| B | F-HNS-16ME | 1 | HN-10.9 M16 X 2.00 STV | MAIN PIVOT PIN COLLAR |
| C | F-MB-14NR40 | 4 | MACH BUSH 14 GA NR 2-1/2" ID | MAIN PIVOT PIN |
| D | F-FHS-8M030E | 17 | FHSC-10.9 M8 X 1.25 X 30 | UHMW FACE PLATE |
| D | F-HNS-8ME | 17 | HN-10.9 M8 X 1.25 STV | UHMW FACE PLATE |
| E | F-HCF-12M040E | 6 | FLHC-10.9 M12 X 1.75 X 40 | BACKING PLATES |
| F | F-HNS-16ME | 3 | FLHN-10.9 M16 X 2.00 | SLAVE CYLINDER ROD MOUNT |
| F | F-HCF-16M040E | 3 | FLHC-10.9 M16 X 2.00 X 40 | SLAVE CYLINDER ROD MOUNT |
| G | F-HCF-12M040E | 2 | FLHC-10.9 M12 X 1.75 X 40 | SLAVE CYLINDER MOUNT PIN |
| G | F-HNS-12ME | 2 | HN-10.9 M12 X 1.75 STV | SLAVE CYLINDER MOUNT PIN |
| H | F-HNF-08ME | 12 | FLHN-10.9 M8 X 1.25 | SHIELDS |
| H | F-HCF-8M020E | 12 | FLHC-10.9 M8 X 1.25 X 20 | SHIELDS |
| I | F-CB-16M050E | 9 | CARR-10.9 M16 X 2.0 X 50 | CONNECTS FRONT & REAR THROATS |
| I | F-HNF-16ME | 9 | FLHN-10.9 M16 X 2.00 | CONNECTS FRONT & REAR THROATS |
| I | MC-143641 | 9 | FW 17.5 X 56 X 5 | CONNECTS FRONT & REAR THROATS |
| I | MC-143641 | 2 | FW 17.5 X 56 X 5MM | DRILLED HOLE |
| J | F-CB-16M050E | 4 | CARR-10.9 M16 X 2.0 X 50 | REAR THROAT TO FEEDERHOUSE |
| K | F-HCF-16M040E | 2 | FLHC-10.9 M16 X 2.0 X 40 | TRANSITION PIVOT BOLTS |
| K | MC-143641 | 2 | FW 17.5 X 56 X 5 | TRANSITION PIVOT BOLTS |
| L | F-HNF-16ME | 4 | FLHN-10.9 M16 X 2.00 NUT | HEADER TOP SPACER PLATES |
| M | F-PCT-02X16 | 2 | PIN COTTER 1/8 X 1 | PINS FOR FEEDER DRUM ARMS |
| N | F-HC-16M050E | 2 | HC-10.9 M16 X 2.0 X 50 | DRILLED HOLE TRANSITION TO FEEDERHOUSE |
| N | F-HNF-16ME | 2 | FLHN-10.9 M16 X 2.00 | DRILLED HOLE TRANSITION TO FEEDERHOUSE |
| O | F-CB-10M050F | 8 | CARR-8.8 M10 X 1.50 X 50 | FLOOR HINGE |
| O | F-HNN-10MF | 8 | HN-8.8 M10 X 1.50 NYLOCK | FLOOR HINGE |
| P | F-HC-8M020E | 8 | HC-10.9 M8 X 1.25 X 20 | FEEDER CHAIN SLATS TO CHAIN - JD PART NUMBER 19M7881 |
| P | F-HNS-8ME | 8 | HN-10.9 M8 X 1.25 STV | FEEDER CHAIN SLATS TO CHAIN - JD PART NUMBER E64256 |

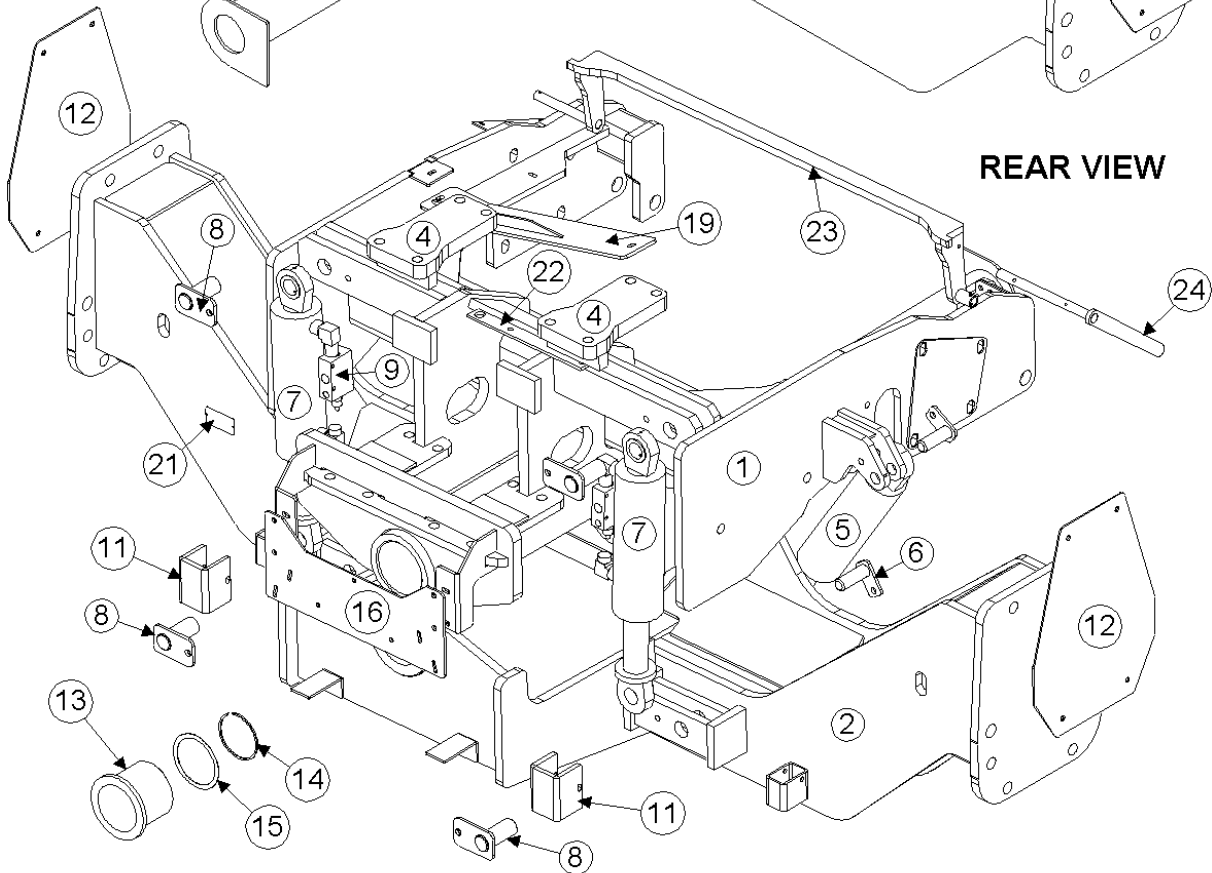
3 CARRIAGE

SEE PAGE 3-3 FOR
CARRIAGE FASTENERS

FRONT VIEW



REAR VIEW

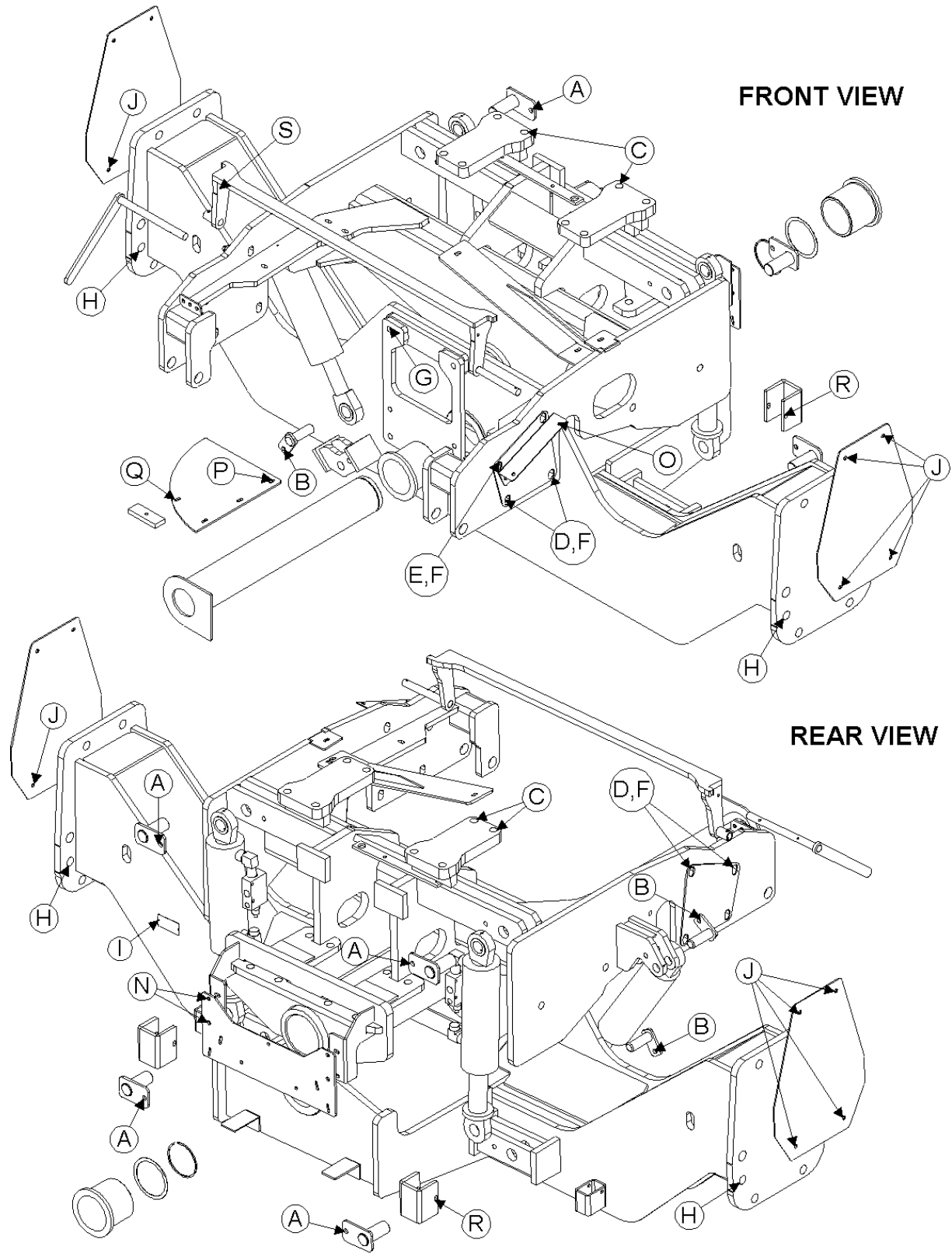


Model 2955S Hillco Leveling System
For Serial Numbers 2955S-1201 thru 2955S-1299

| CARRIAGE COMPONENTS | | | | |
|--|-----------------|-------------|--------------------------------------|--|
| REF. | PART NO. | QTY. | PART NAME | NOTES |
| 1 | LA-253443 | 1 | CO ASM | |
| 2 | LA-253082 | 1 | CU ASM | |
| 3 | LA-247482 | 1 | CM ASM, MAIN PVT PIN | |
| 4 | LA-235711 | 2 | CM PLATE ASM, TOP | |
| 5 | HC-140341 | 1 | CYLINDER, MASTER | **SEE HYDRAULIC PAGE 8-2 |
| 6 | LA-253883 | 2 | LM ASM, PIN | |
| 7 | HC-140312 | 2 | CYLINDER, MAIN LEVELING | **SEE HYDRAULIC PAGE 8-2 |
| 8 | LA-230552 | 4 | CM PIN ASM, MAIN CYLINDER | |
| 9 | HC-138901 | 2 | VALVE, COUNTERBALANCE | **SEE HYDRAULIC PAGE 8-2 |
| 10 | LM-260591 | 1 | CM PLATE, TRANSMISSION MOUNT | |
| 11 | LP-254431 | 2 | LM PLATE, CYLINDER STOP | |
| 12 | LP-230241 | 2 | CM CAP, AXLE | |
| 13 | LP-247961 | 2 | CM BUSHING, PIVOT | |
| 14 | MC-138651 | 1 | SNAP RING 4" | |
| 15 | MC-138641 | 4 | WASHER 4.016" ID X 4.764" OD X .048" | |
| 16 | LP-261431 | 1 | EM PLATE, ELECTRICAL MOUNT | |
| 17 | LP-261531 | 1 | HM SUPPORT, HDR LIFT CYL HOSE | |
| 18 | LP-261121 | 1 | HM TABLE, HYDRO HOSE | |
| 19 | LA-261371 | 1 | HM MOUNT ASM, HYDRO CLAMP | |
| 20 | LM-261091 | 3 | HM FLAT, CLAMP SPACER | |
| 21 | LA-255971 | 1 | TAG, SERIAL NUMBER | |
| 22 | LM-248781 | 1 | LM FLT, BRAKELINE BRKT | |
| 23 | LA-264521 | 1 | LM ASM LINKAGE | ROCK TRAP |
| 24 | LA-264501 | 1 | LM ASM HANDLE | ROCK TRAP |
| CARRIAGE OPTIONS FOR COMBINES WITH DUAL TIRES; REQUIRED ON 9560 STS COMBINES RUNNING DUAL TIRES | | | | |
| NS | LA-253141 | 1 | LM ASM, 9.25 AXLE EXTENSION KIT | |
| MISCELLANEOUS CARRIAGE COMPONENTS AND FASTENERS | | | | |
| NS | MC-142921 | 2 | EMERGENCY BRAKE CABLE | |
| NS | MC-141551 | 1 | CABLE, SHIFT | SUBS TO JOHN DEERE CABLE PART NUMBER AH128356 |
| NS | F-HNN-8MF | 2 | HN- 8.8 M8 X 1.25 NYLOCK | NUT, FOR BRAKE CABLE |

Model 2955S Hillco Leveling System
For Serial Numbers 2955S-1201 thru 2955S-1299

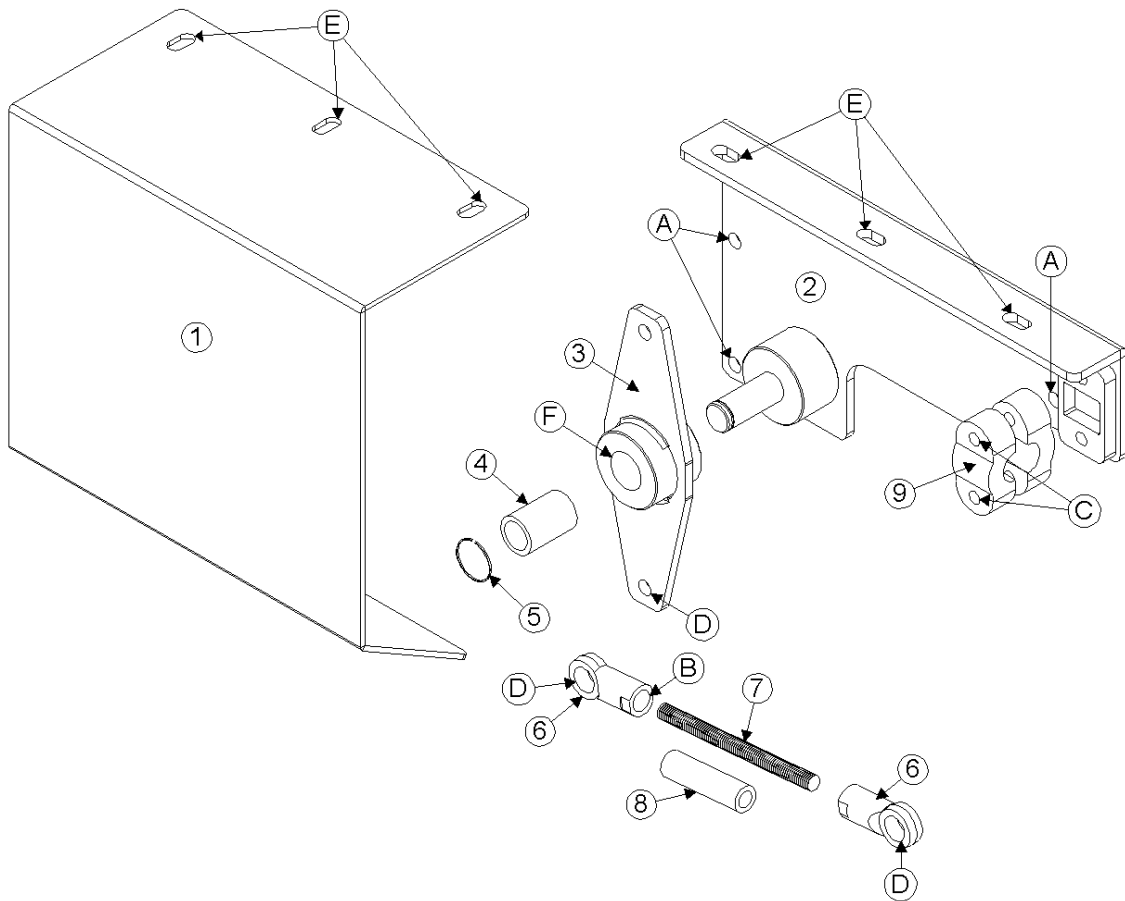
CARRIAGE FASTENERS



Model 2955S Hillco Leveling System
For Serial Numbers 2955S-1201 thru 2955S-1299

| CARRIAGE FASTENERS | | | | |
|---------------------------|-----------------|-------------|--|--|
| REF. | PART NO. | QTY. | PART NAME | WHERE USED |
| A | F-HCF-12M040F | 4 | FLHC-8.8 M12 X 1.75 X 40 | LEVELING CYL MNT PIN |
| A | F-HNS-12ME | 4 | HN-10.9 M12 X 1.75 STV | LEVELING CYL MNT PIN |
| B | F-HCF-12M045E | 2 | FLHC-10.9 M12 X 1.75 X 45 | MASTER CYL MNT PIN |
| B | F-HNS-12ME | 2 | HN-10.9 M12 X 1.75 STV | MASTER CYL MNT PIN |
| C | F-HC8-12C240 | 8 | HC8 3/4-10 X 15 | OVERCARRIAGE CLAMP |
| C | F-HNS-12C | 8 | HN8 3/4-10 STV | OVERCARRIAGE CLAMP |
| D | F-HC-16M110E | 6 | HC-10.9 M16 X 2.00 X 110 | OVERCARRIAGE FRONT RIGHT & BOTTOM LEFT |
| E | F-HC-16M120E | 2 | HC-10.9 M16 X 2.00 X 120 | OVERCARRIAGE FRONT LEFT TOP |
| F | F-FWH-10 | 8 | FW 5/8 H | OVERCARRIAGE FRONT |
| G | F-HNF-16ME | 4 | FLHN-10.9 M16 X 2.00 | BTM & TOP TRANSMISSION MNT HOLES |
| H | F-SHC-24M080E | 4 | SHCS 10.9-M24 X 3 X 80 ZINC | FINAL |
| I | F-UDS-#7X06 | 2 | SCREW, U-DRIVE #7 X 3/8 | SERIAL NUMBER PLATE |
| J | F-HCF-10M040E | 8 | FLHC-10.9 M10 X 1.50 X 40 | ORIGINAL AXLE COVER |
| J | F-HNF-10ME | 8 | FLHN-10.9 M10 X 1.50 | ORIGINAL AXLE COVER |
| J | F-FWF-06020 | 8 | 3/8 FW FENDER X 1-1/4 | ORIGINAL AXLE COVER |
| K | MC-143711 | 4 | STUD, DOUBLE-ENDED-10.9 M16 X 2.00 X 75 | LOWER TRANSMISSION MOUNTING HOLES ON PLATE & UC |
| L | MC-143721 | 2 | STUD, DOUBLE-ENDED-10.9 M16 X 2.00 X 90 | UPPER TRANSMISSION MOUNTING HOLES ON UC |
| M | F-HNF-16ME | 2 | FLHN-10.9 M16 X 2.00 | LOWER STUDS THAT HOLD PLATE TO UC |
| N | F-HNF-08ME | 4 | FLHN-10.9 M8 X 1.25 | ELECTRICAL BOX TO OC |
| N | F-HCF-8M020E | 4 | FLHC- 10.9 M8 X 1.25 X 20 | ELECTRICAL BOX TO OC |
| O | F-HCF-8M030E | 3 | FLHC-10.9 M8 X 1.25 X 30 | HOSE CLAMPS FOR HDR LIFT CYL HOSES |
| O | F-HNF-8ME | 3 | FLHN-10.9 M8 X 1.25 | HOSE CLAMPS FOR HDR LIFT CYL HOSES |
| P | F-HCF-8M020E | 2 | FLHC-10.9 M8 X 1.25 X 20 | HYDRO HOSE TABLE TO TRANSMISSION |
| Q | F-HCF-8M020E | 1 | FLHC-10.9 M8 X 1.25 X 20 | CASE DRAIN HOSE |
| Q | F-HNF-08ME | 2 | FLHN-10.9 M8 X 1.25 | CASE DRAIN HOSE |
| R | F-PSL-04X48 | 2 | SNAP LOCK PIN | SHIPPING SPACERS ON CYLINDER |
| S | F-HC-06M035E | 1 | HC 10.9 M6 X 1.0 X 35 PLT | ROCK TRAP |
| S | F-HNN-06MF | 1 | HN-8.8 M6 X 1.0 NYLOCK | ROCK TRAP |

Model 2955S Hillco Leveling System
For Serial Numbers 2955S-1201 thru 2955S-1299
SHIFT LINKAGE ASSEMBLY

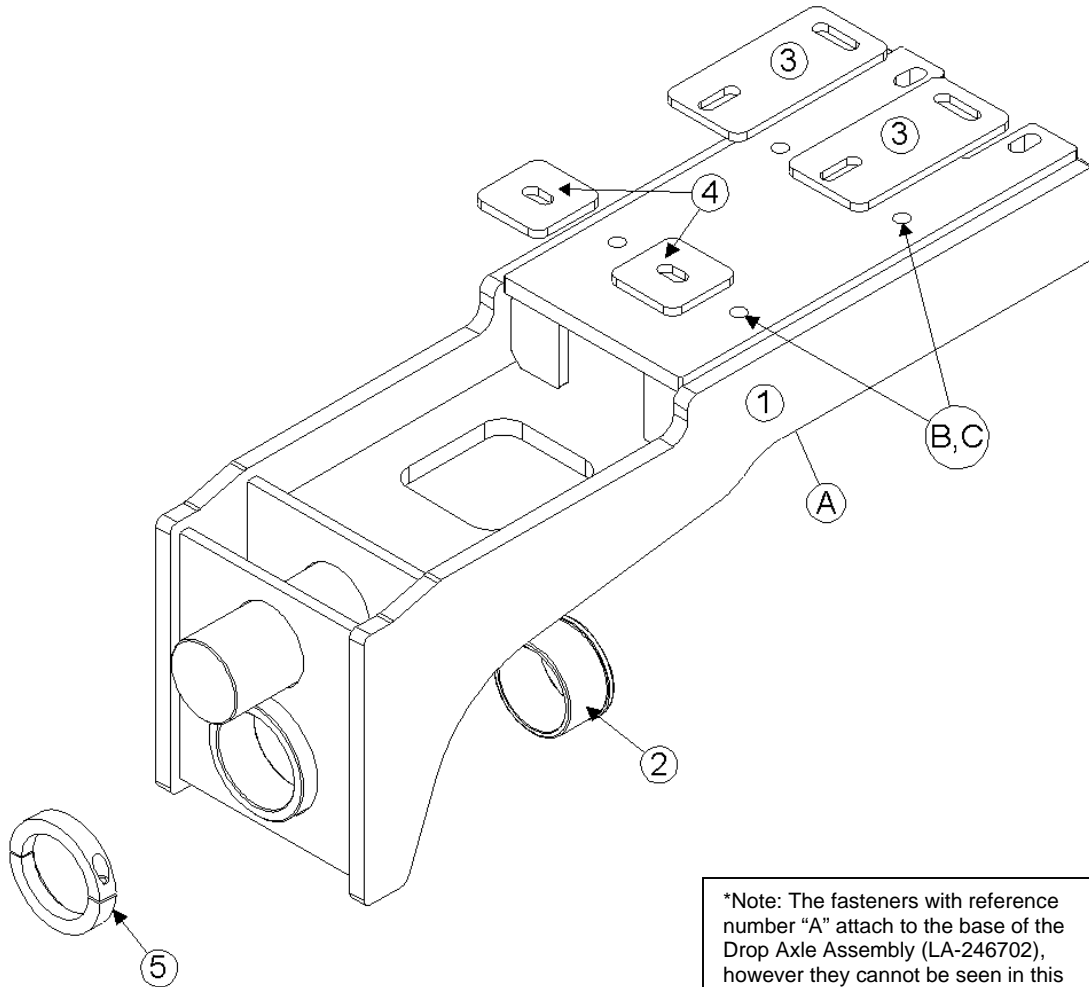


Model 2955S Hillco Leveling System
For Serial Numbers 2955S-1201 thru 2955S-1299

| SHIFT LINKAGE ASSEMBLY | | | | |
|--------------------------------|-----------------|-------------|--|--------------------------------------|
| REF. | PART NO. | QTY. | PART NAME | NOTES |
| 1 | LP-261651 | 1 | LM SHIELD, SHIFT LINKAGE | |
| 2 | LA-261631 | 1 | LM ASM, LINKAGE MOUNT | |
| 3 | LA-261621 | 1 | LM ASM, LINKAGE ARM | |
| 4 | MC-143781 | 1 | SLEEVE BEARING, NYLON, 3/4" ID X 1" OD | PIVOT ARM ASM |
| 5 | MC-143771 | 1 | SNAP RING, EXTERNAL, .750 | SECURES ARM ASM TO MOUNTING ASM |
| 6 | MC-143751 | 2 | BALL JOINT, SHIFT LINKAGE | SUBS TO JD PART NUMBER AH125958 |
| 7 | LM-261611 | 1 | LM ALL THREAD, SHIFT LINKAGE | |
| 8 | LM-261601 | 1 | LM PIPE, ALL THREAD STIFFNER | |
| 9 | MC-143761 | 1 | CLAMP, SHIFT CABLE | SUBS TO JD PART NUMBER H133047 |
| SHIFT LINKAGE FASTENERS | | | | |
| REF. | PART NO. | QTY. | PART NAME | WHERE USED |
| A | F-HCF-10M040E | 3 | FLHC-10.9 M10 X 1.50 X 40 | MOUNTS SHIFT LINKAGE TO TRANSMISSION |
| B | F-HNJ-10MF | 3 | HN-8.8 M10 X 1.50 JAM | ALL THREAD TO BALL JOINTS |
| C | F-HCF-08M070E | 2 | FLHC-10.9 M8 X 1.25 X 70 | SHIFT LINKAGE CLAMPS |
| C | F-HNF-08ME | 2 | FLHN-10.9 M8 X 1.25 | SHIFT LINKAGE CLAMPS |
| D | F-HNF-10ME | 2 | FLHN-10.9 M10 X 1.50 | SECURES BALL JOINTS TO SHIFTING ARMS |
| E | F-HCF-8M020E | 3 | FLHC-10.9 M8 X 1.25 X 20 | SHIELD |
| E | F-HNF-08ME | 3 | FLHN-10.9 M8 X 1.25 | SHIELD |
| F | F-MB-18WR12 | 4 | MACHINE BUSHING 18 GA WR 3/4" ID | SHIFT LINKAGE PIVOT SPACER |

Model 2955S Hillco Leveling System
For Serial Numbers 2955S-1201 thru 2955S-1299

4 DROP AXLE

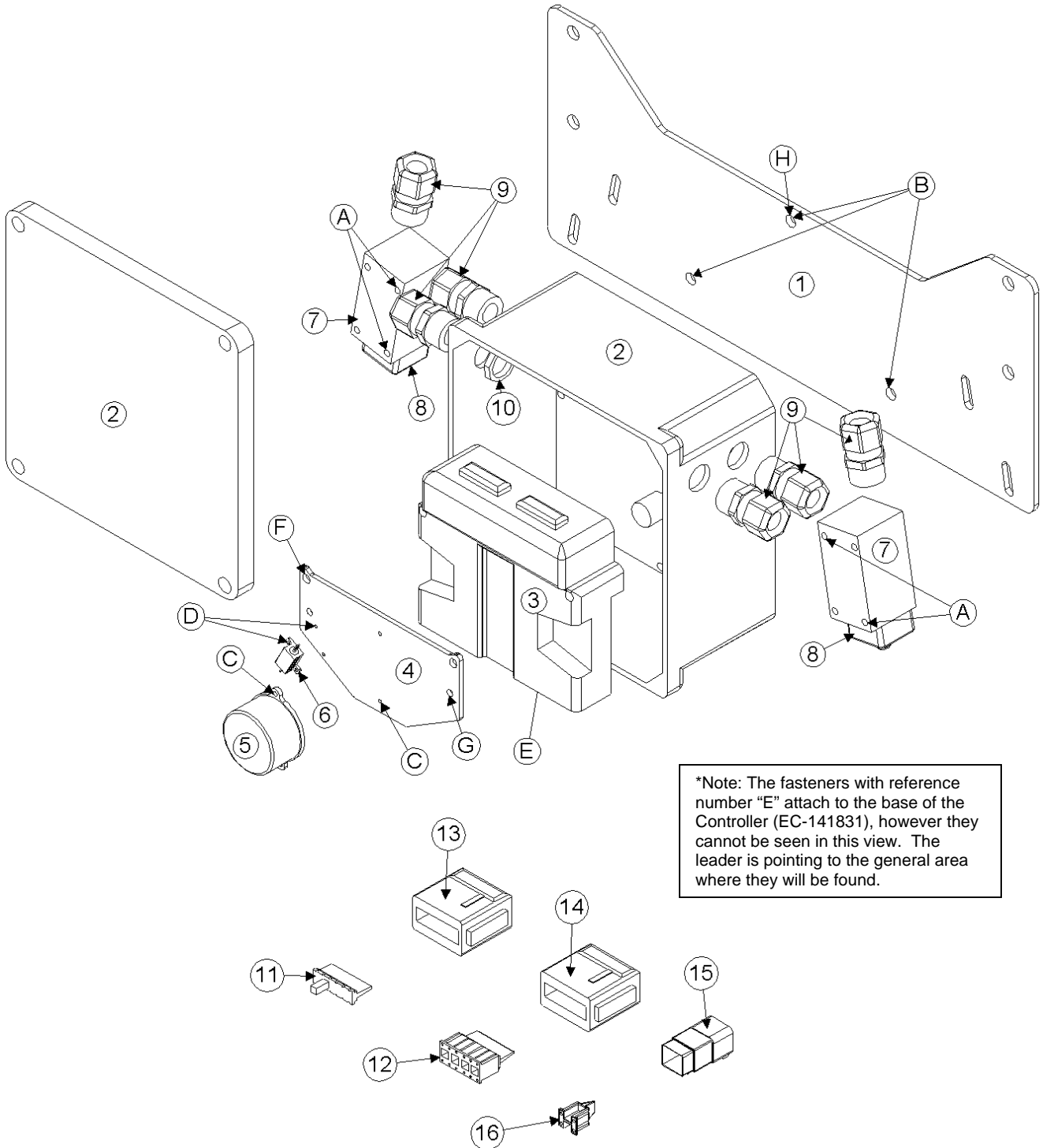


*Note: The fasteners with reference number "A" attach to the base of the Drop Axle Assembly (LA-246702), however they cannot be seen in this view. The leader is pointing to the general area where they will be found.

Model 2955S Hillco Leveling System
For Serial Numbers 2955S-1201 thru 2955S-1299

| DROP AXLE COMPONENTS | | | | |
|-----------------------------|-----------------|-------------|-------------------------------------|-------------------|
| REF. | PART NO. | QTY. | PART NAME | NOTES |
| 1 | LA-246702 | 1 | DA ASM | |
| 2 | LP-235092 | 1 | LM BUSHING, DA PIVOT | |
| 3 | LP-261671 | 2 | DA PLATE, REAR SUPPORT | |
| 4 | LP-261681 | 2 | DA PLATE, FRONT SUPPORT | |
| 5 | LM-263711 | 1 | LM COLLAR, CLAMPING 3-1/2" X 4-3/4" | |
| DROP AXLE FASTENERS | | | | |
| REF. | PART NO. | QTY. | PART NAME | WHERE USED |
| A | F-HC-16M250E | 4 | HC-10.9 M16 X 2.00 X 250 | |
| A | F-HNS-16ME | 4 | HN-10.9 M16 X 2.00 STV | |
| B | F-HCF-16M060E | 6 | FLHC- 10.9 M16 X 2.00 X 60 | |
| B | F-HNS-16ME | 6 | HN-10.9 M16 X 2.00 STV | |
| C | F-FWH-10 | 10 | FW 5/8 HARDENED | |

5 ELECTRICAL BOX AND CONNECTORS



**Note: Line item number '5' refers to a complete assembly. The complete assembly is not shown in this diagram. See page 5-3 for a picture of the complete assembly.

Model 2955S Hillco Leveling System
For Serial Numbers 2955S-1201 thru 2955S-1299

| ELECTRICAL COMPONENTS | | | | |
|---|--------------|------|--|------------------------------------|
| REF. | PART NO. | QTY. | PART NAME | NOTES |
| FOR 9560 STS COMBINES WITH SERIAL NUMBERS 705401-715300 | | | | |
| ASM | LA-259313 | 1 | EM ASM, CONTROLLER (LATE S/N) | |
| FOR 9560 STS COMBINES WITH SERIAL NUMBERS 715301 AND AFTER | | | | |
| ASM | LA-260261 | 1 | EM ASM, CONTROLLER | |
| FOR ALL COMBINES | | | | |
| 1 | LP-261431 | 1 | EM PLATE, ELECTRICAL MOUNT | |
| 2 | LM-255341 | 1 | EM BOX, CONTROLLER MOUNT | |
| 3 | EC-141831 | 1 | CONTROLLER | |
| 4 | LM-255331 | 1 | EM SHT, CLINOMETER MOUNT | |
| 5 | LA-255821 | 1 | EM ASM, CLINOMETER | *SEE NOTE BELOW DIAGRAM |
| 6 | EC-140822 | 1 | RESISTOR | |
| 7 | EC-100557 | 2 | BODY, LIMIT SWITCH | |
| 8 | EC-100692 | 2 | HEAD, LIMIT SWITCH STRAIGHT PLUNGER | |
| 9 | EC-138781 | 6 | STRAIN RELIEF, NYLON, BLK, 1/2 NPT | |
| 10 | EC-142121 | 4 | STRAIN RELIEF NUT, 1/2" NYLON, BLK | |
| ELECTRICAL FASTENERS | | | | |
| REF. | PART NO. | QTY. | PART NAME | WHERE USED |
| A | F-PHM-#10C28 | 4 | PHMS 10-24 X 1-3/4 | LIMIT SWITCH MOUNT |
| A | F-HNF-#10C | 4 | HN 10-24, SERR | LIMIT SWITCH MOUNT |
| B | F-HC5-04C12 | 3 | HC5 1/4-20 X 3/4 | PVC BOX TO BRACKET |
| B | F-LW-04 | 3 | LW 1/4 | PVC BOX TO BRACKET |
| C | F-PHM-#6C06 | 2 | PHMS #6-32 X 3/8 | CLINOMETER MOUNT |
| D | F-HN-#2C | 2 | HN #2-56 | RESISTOR TO ALUMINUM PLATE |
| D | F-PHM-#2C05 | 2 | PHMS #2-56 X 5/16 | RESISTOR TO ALUMINUM PLATE |
| E | F-PHM-04C24 | 2 | PHMS 1/4-20 X 1-1/2 | CONTROLLER TO PVC BOX |
| E | F-HNF-04C | 2 | FLHN 1/4-20 SERR | CONTROLLER TO PVC BOX |
| F | F-PHM-04C36 | 2 | PHMS 1/4-20 X 2-1/4 | GROUNDING PLATE MOUNTING |
| F | F-HNF-04C | 2 | FLHN 1/4-20 SERR | GROUNDING PLATE MOUNTING |
| G | F-PHM-#10C16 | 2 | PHMS 10-24 X 3/4 | GROUNDING PLATE GROUND |
| G | F-HNF-#10C | 2 | HN5 10-24, SERR | GROUNDING PLATE GROUND |
| H | F-LWE-04 | 1 | LW 1/4, EXTERNAL STAR | MAIN GROUND |
| ELECTRICAL CONNECTORS | | | | |
| REF. | PART NO. | QTY. | PART NAME | NOTES |
| 11 | EC-143271 | 1 | DTM SERIES, 12- PIN, WEDGE | |
| 12 | EC-141741 | 3 | DTM SERIES, 12- SOCKET, WEDGE | |
| 13 | EC-141761 | 1 | DTM SERIES 12-SOCKET PLUG GRAY | |
| 14 | EC-141751 | 2 | DTM SERIES, 12-SOCKET, PLUG BLACK | |
| 15 | EC-141791 | 1 | DTM SERIES, 4- SOCKET, PLUG | |
| 16 | EC-141801 | 1 | DTM SERIES, 4- SOCKET, WEDGE | |
| NS | EC-100164 | 1 | PIN, ELECTRICAL | |
| NS | EC-100165 | 2 | SOCKET, SIZE 16 DEUTSCH | |
| NS | EC-133281 | 2 | DIODE, 6 AMP, 50 PIV, SILICON | |
| NS | EC-139631 | 3 | CONNECTOR, PARALLEL, 12-10 GA | |
| NS | EC-139641 | 2 | CONNECTOR, PARALLEL, 16-14 GA | |
| NS | EC-140781 | 1 | BULB, JD PART NUMBER AA2753 | MAX LEVEL LIGHT IN STEERING COLUMN |
| NS | EC-140801 | 4 | TERMINAL, JD# R104701 | |
| NS | EC-143811 | 1 | TERMINAL, MALE, MP 280 SERIES | |
| NS | EC-143331 | 3 | TERMINAL, FEMALE, MP 280 SERIES | |
| NS | ET-ST-20#10 | 8 | TERMINAL, RING, #10, 20 GA., NON-INSULATED | |
| NS | ET-ST-2004 | 1 | TERMINAL, RING, NON-INS, 1/4, 20 GA | |
| NS | EC-143421 | 1 | DTM SERIES, 12-PIN RECEPTACLE W. A-KEY, FLANGE MNT | |
| NS | EC-141771 | 34 | DTM SERIES, SOCKET CONTACT, STAMPED | |
| NS | EC-141781 | 12 | DTM SERIES, PIN CONTACT, STAMPED | |
| NS | EC-145651 | 1 | SPADE, FEMALE 3/16 20 GA. | |
| NS | EC-145661 | 1 | SPADE, FEMALE 3/16 14 GA. | |
| FOR 9560 STS COMBINES WITH SERIAL NUMBERS 705401-715300 | | | | |
| NS | EC-136701 | 5 | PIN, AMP | |
| NS | EC-136711 | 1 | AMP SOCKET | |
| FOR 9560 STS COMBINES WITH SERIAL NUMBERS 715301 AND AFTER | | | | |
| NS | EC-100164 | 5 | PIN, ELECTRICAL | |
| NS | EC-100165 | 1 | SOCKET, SIZE 16 DEUTSCH | |

ELECTRICAL CABLES



#1 LA-255631
EM CABLE ASM, LIMIT



#2 LA-255821
EM ASM,
CLINOMETER



#3 LA-252462
EM CABLE ASM, MAX
LEVEL LIGHT



#4 LA-255643
EM ASM, BOX TO VALVE



#5 LA-255732
EM ALL CABLE ASM, CAB
TO BOX, LATE



#6 LA-263671 EM ALL CABLE
ASM, LEVELING MANIFOLD



#7 LA-260242 EM CABLE
ASM, TRIM SIGNAL



#8 LA-263681 EM ALL CABLE
ASM, LEVELING MANIFOLD

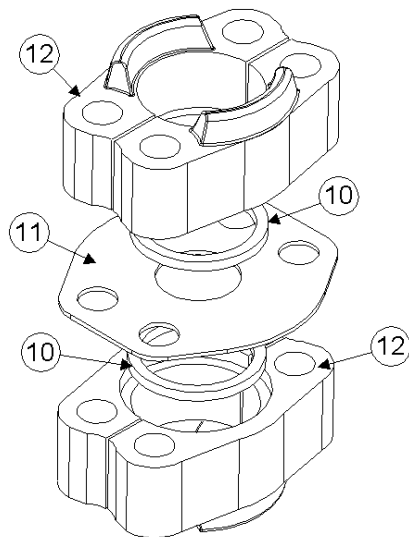
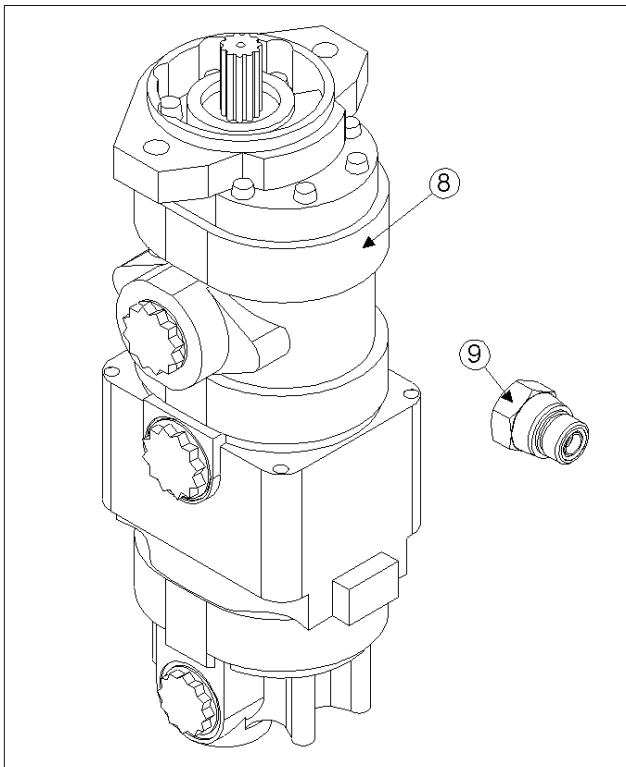
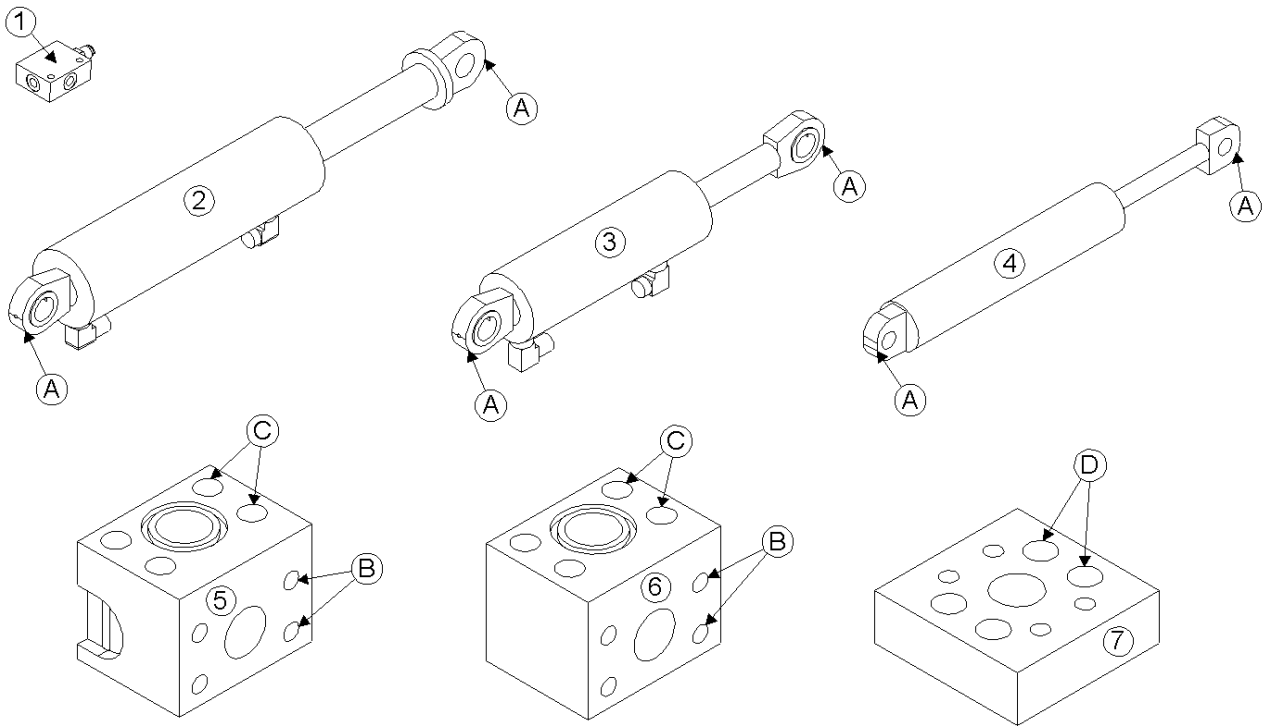


#9 LA-260222 EM CABLE ASM,
TRIM SIGNAL

Model 2955S Hillco Leveling System
For Serial Numbers 2955S-1201 thru 2955S-1299

| ELECTRICAL CABLE ASSEMBLIES | | | | |
|---|-----------|------|-------------------------------------|-----------------------|
| REF. | PART NO. | QTY. | PART NAME | DESCRIPTION |
| ALL COMBINES | | | | |
| 1 | LA-255631 | 2 | EM CABLE ASM, LIMIT SWITCH | |
| 2 | LA-255821 | 1 | EM CABLE ASM, CLINOMETER | |
| 3 | LA-252462 | 1 | EM CABLE ASM, MAX LEVEL LIGHT | |
| 4 | LA-255643 | 1 | EM CABLE ASM, BOX TO VALVE | |
| NS | LA-261691 | 1 | EM ASM, DIAGNOSTIC CONNECTION | |
| 5 | LA-255732 | 1 | EM ALL CABLE ASM, CAB TO BOX, LATE | |
| .. | LA-252473 | 1 | EM CABLE ASM, CAB TO BOX | INCLUDED IN LA-255732 |
| .. | LA-252462 | 1 | EM CABLE ASM, MAX LEVEL LIGHT | INCLUDED IN LA-255732 |
| FOR COMBINES WHICH FALL WITHIN THE FOLLOWING SERIAL NUMBER BREAKS: 9560STS (705401-715300) | | | | |
| 6 | LA-263671 | 1 | EM ALL CABLE ASM, LEVELING MANIFOLD | |
| .. | LA-263611 | 1 | EM CABLE ASM, LEVELING MANIFOLD | INCLUDED IN LA-263671 |
| .. | LA-263601 | 1 | EM CABLE ASM, DUMP SIGNAL | INCLUDED IN LA-263671 |
| 7 | LA-260242 | 1 | EM CABLE ASM, TRIM SIGNAL | |
| FOR COMBINES WHICH FALL WITHIN THE FOLLOWING SERIAL NUMBER BREAKS: 9560 STS (715301-) | | | | |
| 8 | LA-263681 | 1 | EM ALL CABLE ASM, LEVELING MANIFOLD | |
| .. | LA-263611 | 1 | EM CABLE ASM, LEVELING MANIFOLD | INCLUDED IN LA-263681 |
| .. | LA-263621 | 1 | EM CABLE ASM, DUMP SIGNAL | INCLUDED IN LA-263681 |
| 9 | LA-260222 | 1 | EM CABLE ASM, TRIM SIGNAL | |

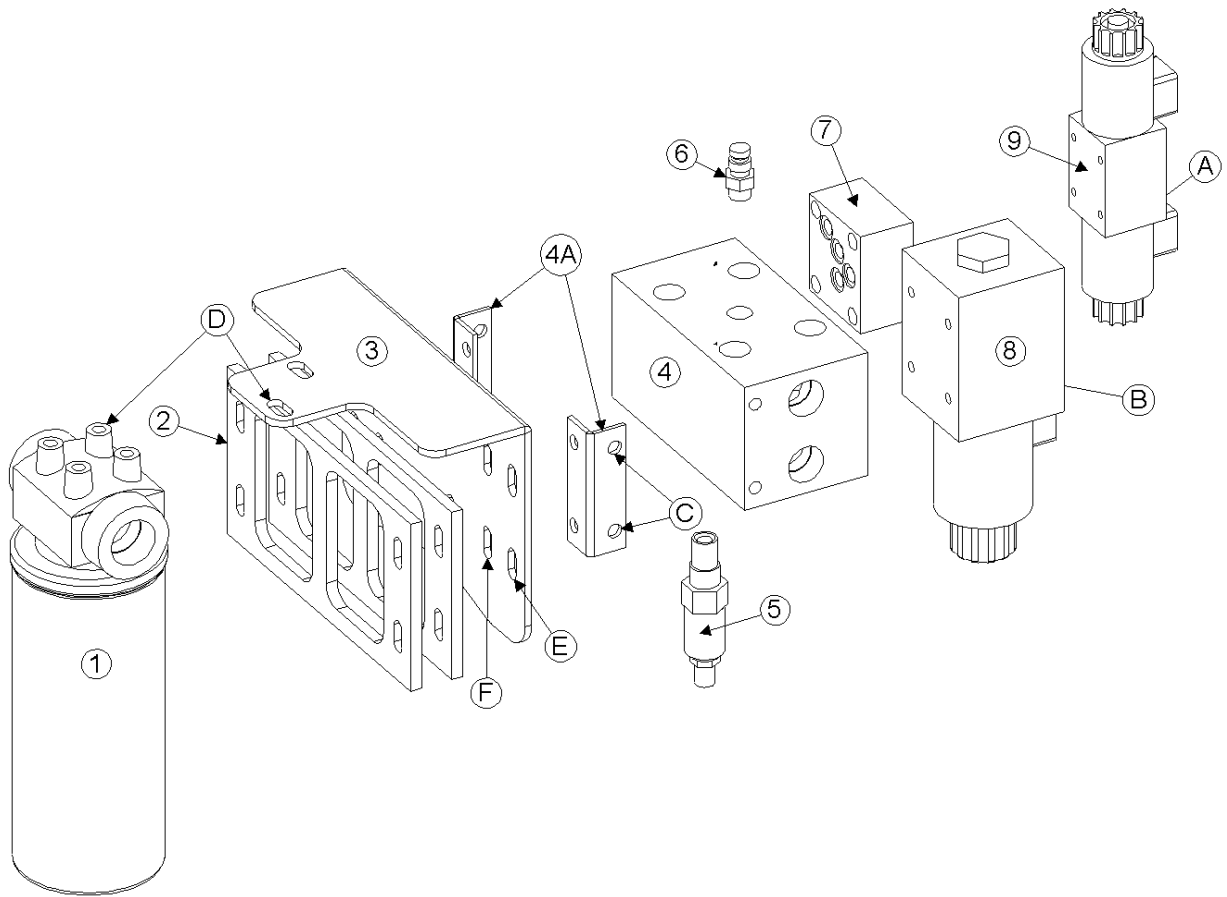
6 HYDRAULICS



Model 2955S Hillco Leveling System
For Serial Numbers 2955S-1201 thru 2955S-1299

| HYDRAULIC COMPONENTS AND FASTENERS | | | | |
|--|-----------------|-------------|---|--|
| REF. | PART NO. | QTY. | PART NAME | NOTES |
| 1 | HC-138901 | 2 | VALVE, COUNTER BALANCE | |
| .. | HC-139161 | 2 | CARTRIDGE, COUNTERBALANCE VALVE | |
| .. | HC-139171 | 2 | BODY, COUNTERBALANCE VALVE | |
| NS | HC-140361 | 2 | SEAL KIT, COUNTERBALANCE VALVE | |
| 2 | HC-140312 | 2 | CYLINDER, MAIN LEVELING | |
| NS | HC-142451 | 2 | SEAL KIT, MAIN LEVELING CYLINDER | |
| 3 | HC-140341 | 1 | CYLINDER, MASTER | |
| NS | HC-134201 | 1 | SEAL KIT, MASTER CYLINDER | |
| 4 | HC-138581 | 1 | CYLINDER, SLAVE | |
| NS | HC-141281 | 1 | SEAL KIT, SLVE CYLINDER | |
| 5 | LM-261081 | 1 | HM BLOCK, CODE 62 90° | MOUNTS TO BOTTOM PORT ON HYDRO MOTOR |
| 6 | HC-143361 | 1 | CODE 62/CODE 62 ELBOW | MOUNTS TO BOTTOM PORT ON HYDRO MOTOR |
| 7 | HC-143371 | 1 | CODE 62 90° ROTATIONAL ADAPTER | MOUNTS TO BOTTOM PORT ON HYDRO MOTOR |
| 8 | HC-143101 | 1 | HYDRAULIC PUMP, HILLMASTER, TRIPLE M | JD PART NUMBER AH212540 |
| 9 | LA-263651 | 1 | HM ORIFICE ASM, PUMP ASM | |
| A | F-SSS-04F04 | 8 | SET SCREW, 1/4-28 X 1/4 | ALL CYLINDERS |
| B | F-HC8-07C24 | 8 | HC8 7/16-14 X 1-1/2 | CODE 62 SPLT FLANGE |
| C | F-HC8-07C52 | 8 | HC8 7/16-14 X 3-1/4 | THESE FASTENERS COME WITH ELBOWS |
| C | F-LWH-07 | 8 | LW 7/16 HD | THESE FASTENERS COME WITH ELBOWS |
| D | F-SHC-07C20 | 4 | SHCS 7/16-14 X 1-1/4 | THESE FASTENERS COME WITH ROTATIONAL ADAPTER |
| D | F-LWHC-07 | 4 | LW 7/16 HD HIGH COLLAR | THESE FASTENERS COME WITH ROTATIONAL ADAPTER |
| CODE 62 SPLIT FLANGE CONNECTOR KIT ASSEMBLY AND FASTENERS | | | | |
| ASM | HC-101843 | 2 | CODE 62 SLT FLNG CONNECTOR KIT WITH O-RINGS | FWD AND REVERSE PROPULSION HOSES |
| ONE HC-101843 KIT INCLUDES: | | | | |
| 10 | HC-134911 | 3 | O-RING, CODE 62 CONNECTOR | |
| 11 | HC-137891 | 1 | PLATE, CODE 62 | |
| 12 | HC-137901 | 2 | CODE 62, #16 SPLIT FLANGE KIT (PAIR) | |
| NS | F-HC8-07C44 | 4 | HC8 7/16 X 2-3/4 | |
| NS | F-HN8-07C | 4 | HN8 7/16-14 | |

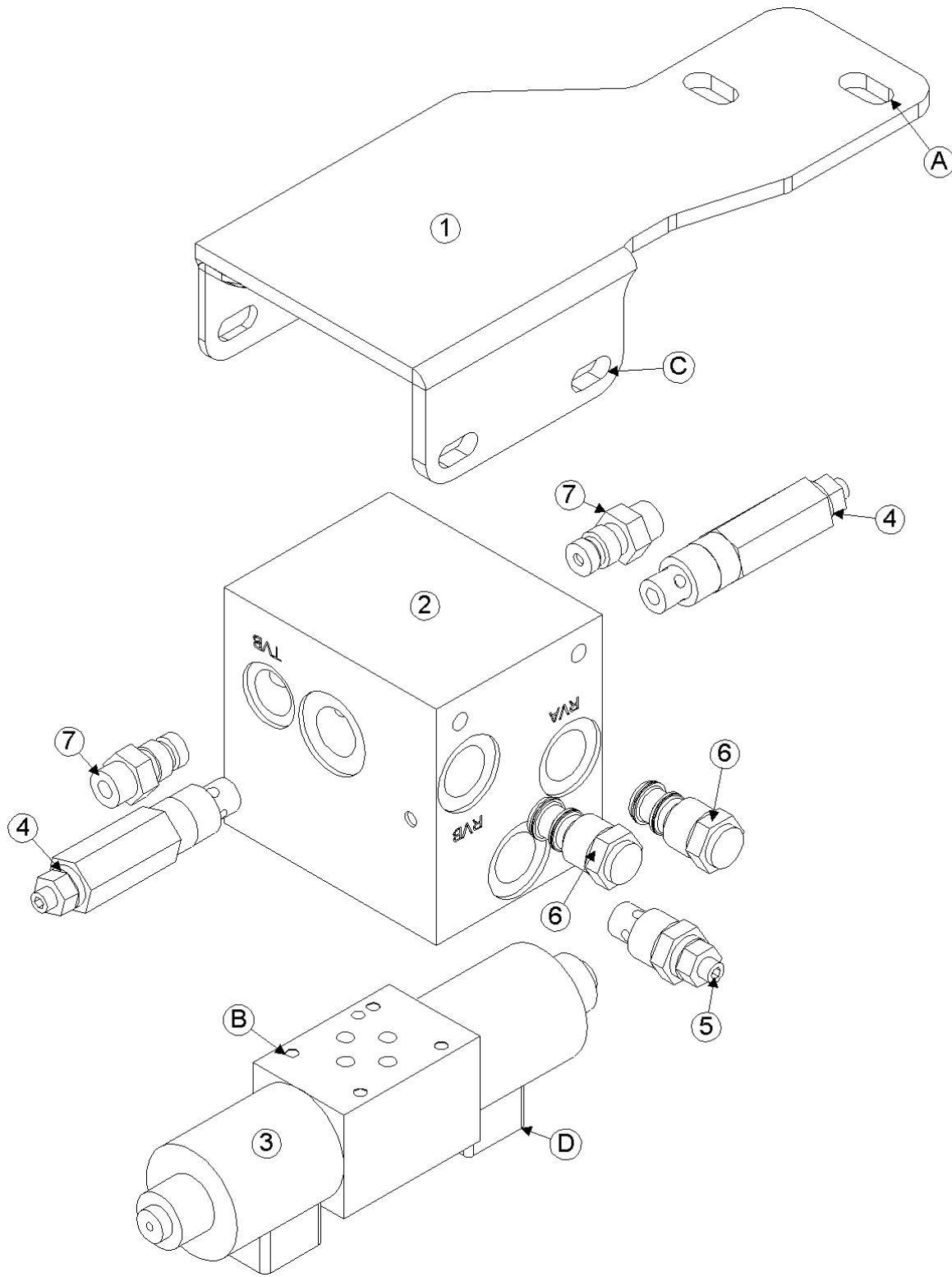
Model 2955S Hillco Leveling System
For Serial Numbers 2955S-1201 thru 2955S-1299
HYDRAULIC LEVELING MANIFOLD



Model 2955S Hillco Leveling System
For Serial Numbers 2955S-1201 thru 2955S-1299

| LEVELING MANIFOLD COMPONENTS | | | | |
|---|---------------|------|--|------------------------------------|
| REF. | PART NO. | QTY. | PART NAME | NOTES |
| FOR COMBINES WHICH FALL WITHIN THE FOLLOWING SERIAL NUMBER BREAKS: 9560STS (705401-715300) | | | | |
| ASM | LA-263361 | 1 | HM ASM, MANIFOLD/FILTER | |
| FOR COMBINES WHICH FALL WITHIN THE FOLLOWING SERIAL NUMBER BREAKS: 9560 STS (715301-) | | | | |
| ASM | LA-263691 | 1 | HM ASM, MANIFOLD/FILTER | |
| FOR ALL COMBINES | | | | |
| 1 | HC-143441 | 1 | FILTER ASM, OIL | RETURN LINE TO TANK |
| 2 | LP-263321 | 2 | PLATE, BACKING | |
| 3 | LP-263311 | 1 | HM PLT, MANIFOLD MNT | |
| ASM | LA-263261 | 1 | MANIFOLD, LEVELING | |
| ONE LA-263261 INCLUDED THE FOLLOWING: | | | | |
| 4 | HC-143981 | 1 | DO5 MANIFOLD, 2-STATION W/ RELIEF CAVITY | |
| 4A | .. | 2 | BRACKETS, MANIFOLD | INCLUDED WITH HC-143981 |
| 5 | HC-142991 | 1 | CARTRIDGE, PRESSURE RELIEF | MANIFOLD AND DUAL RELIEF HOUSING |
| 6 | HC-143991 | 1 | HYDRAULIC QUICK-CONNECT COUPLER | JD PART NUMBER AH125760 |
| 7 | HC-143001 | 1 | ADAPTER, D03/D05 VALVE | LEVELING AND TRIM SECTIONS OF MAN |
| 8 | HC-143071 | 1 | VALVE, D05 SOFT SHIFT DUMP | MIDDLE STATION ON MANIFOLD |
| 9 | HC-140411 | 1 | VALVE, DIRECTIONAL CONTROL, PROPORTIONAL | LEVELING PORTION OF MANIFOLD |
| LEVELING MANIFOLD FASTENERS | | | | |
| REF. | PART NO. | QTY. | PART NAME | NOTES |
| A | F-SHC-#10C32 | 4 | SHCS 10-24 X 2 | LEVELING SECTION OF MANIFOLD |
| A | F-LW-#10 | 4 | LW #10 | LEVELING SECTION OF MANIFOLD |
| B | F-SHC-04C28 | 4 | SHCS 1/4-20 X 1-3/4 | DUMP VALVE ON MANIFOLD |
| C | F-HCF-05C08 | 8 | FLHC 5/16-18 X1/2 | MANIFOLD TO MANIFOLD MOUNT |
| D | F-HCF-10M020E | 2 | FLHC-10.9 M10 X 1.50 X 20 | FILTER HOUSING TO MOUNTING BRACKET |
| E | F-HCF-08M035E | 4 | FLHC-10.9 M8 X 1.25 X 35 | MOUNTING BRACKET TO CHASSIS |
| E | F-HNF-8ME | 4 | FLHN-10.9 M8X1.25 | MOUNTING BRACKET TO CHASSIS |
| F | F-HNF-05F | 4 | FLHC 5/16-18 | MANIFOLD MOUNT TO MOUNTING BRACKET |

Model 2955S Hillco Leveling System
For Serial Numbers 2955S-1201 thru 2955S-1299
HYDRAULIC TRIM MANIFOLD



Model 2955S Hillco Leveling System
For Serial Numbers 2955S-1201 thru 2955S-1299

| TRIM MANIFOLD COMPONENTS | | | | |
|---|---------------|------|---|---------------------------|
| REF. | PART NO. | QTY. | PART NAME | NOTES |
| FOR COMBINES WHICH FALL WITHIN THE FOLLOWING SERIAL NUMBER BREAKS: | | | | |
| 9560STS (705401-715300) | | | | |
| ASM | LA-263721 | 1 | MANIFOLD ASM, TRIM | |
| FOR COMBINES WHICH FALL WITHIN THE FOLLOWING SERIAL NUMBER BREAKS: | | | | |
| 9560 STS (715301-) | | | | |
| ASM | LA-263661 | 1 | MANIFOLD ASM, TRIM | |
| FOR ALL COMBINES | | | | |
| 1 | LA-263521 | 1 | HM ASM, MOUNT (TRIM MANIFOLD) | |
| 2 | HC-145441 | 1 | MANIFOLD, CUSTOM TRIM | TRIM MANIFOLD |
| 3 | HC-143011 | 1 | VALVE, DIRECTIONAL CONTROL, BANG/BANG | TRIM MANIFOLD |
| 4 | HC-145431 | 2 | RELIEF, POPPET DIRECT ACTING | TRIM MANIFOLD |
| 5 | HC-145501 | 1 | VALVE, NEEDLE | TRIM MANIFOLD |
| 6 | HC-145511 | 2 | PILOT OPERATED CHECK | TRIM MANIFOLD |
| 7 | HC-143991 | 2 | HYDRAULIC QUICK-CONNECT COUPLER AH125760 | TRIM MANIFOLD |
| TRIM MANIFOLD FASTENERS | | | | |
| REF. | PART NO. | QTY. | PART NAME | WHERE USED |
| A | F-HCF-10M030E | 2 | FLHC 10.9 M10 X 1.50 X 30 PLT | TRIM MANIFOLD MOUNT |
| A | F-HNF-10ME | 2 | FLHN-10.9 M10 X 1.50 PLT | TRIM MANIFOLD MOUNT |
| B | F-SHC-#10C32 | 4 | SHCS 10-24 X 2 | VALVE TO MANIFOLD |
| B | F-LW-#10 | 4 | LW #10 | VALVE TO MANIFOLD |
| C | F-HC5-05C08 | 4 | HC5 5/16-18 X 1/2 FLANGE | MANIFOLD TO MOUNT BRACKET |
| D | F-PHM-#6C08 | 4 | PHMS 6-32 X 1/2 | RECEPTACLE PLUG MOUNTING |
| D | F-HNF-#6C | 4 | FLHN 6-32 SERR. | RECEPTACLE PLUG MOUNTING |

Model 2955S Hillco Leveling System
For Serial Numbers 2955S-1201 thru 2955S-1299

HYDRAULIC HOSES

| REF. | PART NO. | QTY. | PART NAME | WHERE USED |
|---|-----------|------|---|--|
| LEVELING HOSES | | | | |
| NS | LA-141081 | 2 | 3/8" 100R2 31" #6 FORS X #6 FORS | LEFT OR RIGHT POCV#2 TO RIGHT/LEFT ROD FRONT |
| NS | LA-141093 | 2 | 1/4" 100R2 5-7/8" #6 FORS X #6 FORS 90° | LEFT POCV #3 TO LEFT ROD FRONT |
| NS | LA-256541 | 1 | 1/2" 100R2 252" #8 FORS X #6 FORS | "A" PORT TO ROD END |
| NS | LA-256551 | 1 | 1/2" 100R2 252" #8 FORS X #6 FORS 90° | "B" PORT TO MAIN LEV BASE |
| PUMP & MANIFOLD HOSES | | | | |
| NS | LA-256531 | 1 | 3/4 100R12 46" #10 FORS 90° X #12 FORS | PUMP TO "P" PORT |
| NS | LA-143681 | 1 | 1" 100R16 (1M2T) 42" #16 FORS X #16 FORS | SUCTION HOSE |
| NS | LA-256562 | 1 | 3/4" 100R1 30" #12 FORS X #12 FORS 45° | "T" PORT TO FILTER INLET |
| HYDROSTAT HOSES | | | | |
| NS | LA-141502 | 2 | 1 100R15 73-1/2" CODE 62 SPLT FLNG 90° SHORT DROP X CODE 62 SPLT FLNG STR | HYDROSTAT FRONT & REAR HOSES |
| NS | LA-143551 | 1 | 3/4 100R1 HOSE 70" #12 MORS X #12 FORS | HYDRO MOTOR CASE DRAIN |
| NS | HC-101843 | 2 | CODE 62 SLT FLNG CONNECTOR KIT WITH O-RINGS | |
| GREASE HOSES | | | | |
| NS | LA-141131 | 1 | 3/16 R1 GREASE HOSE 53" 1/8 MPT X 1/8 MPT | RH MAIN BASE EO BH#2 |
| NS | LA-141141 | 1 | 3/16 R1 GREASE HOSE 50-1/2" 1/8 MPT X 1/8 MPT | MAIN PVT TO BH #1 |
| NS | LA-141152 | 1 | 3/16 R1 GREASE HOSE 66" 1/8 MPT X 1/8 MPT | LH MAIN BASE TO BH #3 |
| BRAKE HOSES | | | | |
| NS | LA-130371 | 2 | #4 TITE FLEX 31" #4 FORS X #4 MORS | |
| NS | HA-133131 | 2 | TEFLON O-RING | |
| HEADER LIFT CYLINDER HOSES | | | | |
| NS | LA-143801 | 1 | 1/2" 100R2 HOSE 38" #8 FORS X #8 FORS | HEADER LIFT CYLINDERS |
| TRIM HOSES | | | | |
| NS | LA-141102 | 1 | 1/4" 100R2 94" #4 FORS X #4 FORS | MASTER BASE TO TEE THAT CONNECTS TO HOSE LA-139132 |
| NS | LA-141102 | 1 | 1/4" 100R2 94" #4 FORS X #4 FORS | MASTER ROD TO TEE THAT CONNECTS TO HOSE LA-139122 |
| NS | LA-139113 | 1 | 1/4" 100R2 54" #4 FORS X #4 FORS | TRIM PORT "A" TO TEE CONNECTED TO HOSE LA-143481 |
| NS | LA-139113 | 1 | 1/4" 100R2 54" #4 FORS X #4 FORS | TRIM PORT "B" TO TEE CONNECTED TO HOSE LA-143471 |
| NS | LA-139122 | 1 | 1/4" 100R2 233" #4 FORS X #4 FORS | SLAVE ROD TO TEE CONNECTED TO HOSE LA-143481 |
| NS | LA-139132 | 1 | 1/4" 100R2 245" #4 FORS X #4 FORS | SLAVE BASE TO TEE CONNECTED TO HOSE LA-143471 |
| NS | LA-263411 | 2 | 1/4" 100R2 55" #4 FORS X #4 FORS 90° | HK TO "P" & "T" PORTS TRIM MANIFOLD |
| FOR 9560 STS COMBINES WITH SERIAL NUMBERS (-715300) | | | | |
| NS | LA-143831 | 1 | 1/2" 100R2 HOSE 25" #8 FORS X #10 FORS 90° | PRIORITY VALVE #3 TO Z STACK VALVE |

Model 2955S Hillco Leveling System
For Serial Numbers 2955S-1201 thru 2955S-1299

HYDRAULIC ADAPTERS

| REF. | PART NO. | QTY. | PART NAME | WHERE USED |
|--|---------------|------|---|---|
| MAIN CYLINDER ADAPTERS | | | | |
| NS | HA-L-6FF6MF | 3 | #6 FORS X #6 MORS 90° | LEFT AND RIGHT LEV CYL ROD |
| NS | HA-K-6MF6MO | 2 | #6 MORB X #6 MORS BRANCH TEE | LEFT AND RIGHT LEV CYL ROD |
| NS | HA-M-6FF6MF | 2 | #6 FORS X #6 MORS SWIVEL NUT RUN TEE | LEFT MAIN LEV CYL ROD/ LEFT POCV #2 |
| NS | HA-L-6MF6MO | 4 | #6 MORS X #6 MORB 90° | POCV #2,#3 LEFT & RIGHT |
| NS | HA-L-6MO6MO | 2 | #6 MORB X #6 MORB 90° | POCV #1 LEFT AND RIGHT LEV CYL BASE |
| NS | HA-L-6FF6MF | 1 | #6 MORS X #6 FORS 90° | RIGHT LOWER POCV #2 |
| MASTER AND SLAVE CYLINDER ADAPTERS | | | | |
| NS | HA-L-4MF6MO | 2 | #4 MORS X #6 MORB 90° | MASTER CYLINDER ROD AND BASE |
| NS | HA-L-4MF6MO | 2 | #4 MORS X #6 MORB 90° | SLAVE CYLINDER ROD AND BASE |
| NS | HA-Y-4MF4MF | 2 | #4 MORS UNION TEE | WHERE SLAVE AND MASTER LINES JOIN |
| HEADER LIFT CYLINDER ADAPTERS | | | | |
| NS | HA-Q-8FF8MF | 1 | #8 ORS STRAIGHT THREAD BRANCH TEE | LEFT HEADER LIFT CYLINDER |
| NS | HA-L-8MF8MO | 1 | #8 MORB X #8 MORS 90° | RIGHT HEADER LIFT CYLINDER |
| GREASE FITTING ADAPTERS | | | | |
| NS | HA-S-2FP2MN | 3 | 1/8" NPSM X 1/8" FPT BULKHEAD CONNECTOR | GREASE BULKHEAD MOUNT |
| NS | HA-NJ-2FN | 3 | 1/8" NPSM BULKHEAD LOCKNUT | BULKHEAD CONNECTOR |
| NS | HC-138011 | 3 | 1/4-28 STRAIGHT ZERK | ALL GREASE LINES |
| NS | HA-L-2FP2MP | 1 | 1/8 NPT 90 STREET EL | MAIN PIVOT PIN |
| NS | HC-135771 | 2 | 1/4-28 MALE X 1/8 FPT 90° | MASTER AND MAIN LEV CYL BASE |
| RESERVOIR ADAPTERS | | | | |
| NS | HA-L-16MF16MO | 1 | #16 MORB X #16 MORS 90° | SUCTION PORT |
| NS | HA-M-16FF16MF | 1 | #16 FORS X #16 MORS SWIVEL NUT RUN TEE | SUCTION PORT |
| TRIM ADAPTERS | | | | |
| NS | HA-S-4MF4MO | 1 | #4 MORB X #4 MORS STR | PRESSURE HIC |
| NS | HA-L-4MF4MO | 1 | #4 MORB X #4 MORS 90° | RETURN HIC |
| NS | HA-S-8FF4MF | 2 | #8 FORS X #4 MORS REDUCER | "P" & "T" PORTS OF TRIM |
| TRIM MANIFOLD ADAPTERS | | | | |
| NS | HA-L-4MF4MO | 2 | #4 MORB X #4 MORS 90° | "A" AND "B" PORTS TRIM MANIFOLD |
| NS | HA-S-8MF8MO | 2 | #8 MORB X #8 MORS STRIAIGHT | "P" AND "T" PORTS TRIM MANIFOLD |
| PUMP ADAPTERS | | | | |
| NS | HA-S-16MF16MO | 1 | #16 MORB X #16 MORS STR | MIDDLE PUMP SUCTION PORT |
| NS | HA-M-10MF10MO | 1 | | PRESSURE PORT |
| RETURN FILTER HOUSING ADAPTERS | | | | |
| NS | HA-L-12MF16MO | 1 | #16 MORB X #12 MORS 90° | INLET PORT ON FILTER HOUSING |
| NS | HA-L-16MF16MO | 1 | #16 MORB X #16 MORS 90° | OUTLET PORT ON FILTER HOUSING |
| MANIFOLD ADAPTERS | | | | |
| NS | HA-E-12MO | 2 | #12 MORB SOCKET HEAD PLUG (ZERO-LEAK) | "T" & "P" PORTS |
| NS | HA-L-12MO12MO | 1 | #12 MORB X #12 MORB 90° | "P" PORT & #2 PORT ON PRIORITY VALVE |
| NS | HA-L-12MF12MO | 1 | #12 MORB X #12 MORS 90° | "T" PORT |
| NS | HA-L-12MF12MO | 1 | #12 MORB X #12 MORS 90° | "P" PORT |
| NS | HA-L-8MF8MO | 2 | #8 MORB X #8 MORS 90° | "A" & "B" LEVELING PORTS |
| NS | HA-E-8MO | 2 | #8 MORB SOCKET HEAD PLUG (ZERO-LEAK) | "A" & "B" PORTS UNDER DUMP VALVE |
| FOR COMBINES WHICH FALL WITHIN THE FOLLOWING SRIAL NUMBER BREAKS: 9560 STS (715301-) | | | | |
| OPTIONAL ADAPTERS | | | | |
| NS | HA-E-6MF | 1 | #6 MORS PLUG | USED IN JD CM HOSES IF COMBINE ALREADY HAS CM |
| NS | HA-E-4MF | 1 | #4 MORS PLUG | USED IN JD CM HOSES IF COMBINE ALREADY HAS CM |

Model 2955S Hillco Leveling System
For Serial Numbers 2955S-1201 thru 2955S-1299

7 MISCELLANEOUS

| DECALS AND LITERATURE | | | | |
|---------------------------|----------------|------|---|--|
| REF. | PART NO. | QTY. | PART NAME | NOTES |
| NS | LL20-100782 | 1 | CAUTION LEVELING SYSTEM CAB | WINDOW IN CAB |
| NS | LL20-100783 | 4 | DANGER, CRUSHING HAZARD | 4-RIGHT & LEFT UNDERCARRIAGE - FRONT & BACK |
| NS | LL20-100783 | 2 | DANGER - CRUSHING HAZARD | ABOVE THE REAR AXLE |
| NS | LL20-100784 | 2 | DANGER, PINCH POINT | RIGHT & LEFT UPPER TRANSITION FACE PLATE |
| NS | LL20-100786 | 2 | WARNING ELECTRONIC CRUSHING HAZARD | 1- UNDERCARRIAGE FRONT; 1- FRONT OF CONTROL BOX |
| NS | LL20-100787 | 2 | CAUTION - LEVELING SYSTEM HAZARD | ON SIDE PANEL BEHIND FRONT TIRES |
| NS | LL20-100788 | 1 | DANGER - HYDRAULIC HAZARD | NEAR THE HYDRAULIC MANIFOLD |
| NS | LL20-100788 | 2 | DANGER - HYDRAULIC HAZARD | 1- EACH MAIN CYLINDER |
| NS | LL-133741 | 1 | LABEL, GREASE 50 HRS | MASTER CYLINDER ROD |
| NS | LL-133741 | 1 | LABEL, GREASE 50 HRS | OC BULKHEAD |
| NS | LL-133741 | 2 | LABEL, GREASE 50 HRS | RIGHT & LEFT MAIN LEV CYL BOTTOM |
| NS | LL-133741 | 1 | LABEL, GREASE 50 HRS | MASTER CYLINDER ROD |
| NS | LL-141301 | 2 | DECAL, HILLCO SIDEHILL | GULL WING DOORS |
| NS | LL-143621 | 2 | DANGER - AVOID CRUSHING INJURY | ON SIDE PANEL BEHIND FRONT TIRES |
| NS | LA-255971 | 1 | TAG, SERIAL NUMBER | REAR OF UNDERCARRIAGE |
| NS | D-070328ADL01A | 1 | PARTS MANUAL | |
| NS | D-040820CLA01C | 1 | OPERATION MANUAL | |
| NS | D-252420LJH01A | 1 | INSTALLATION MANUAL | |
| HOSE CLAMPS AND FASTENERS | | | | |
| REF. | PART NO. | QTY. | PART NAME | NOTES |
| NS | MC-137521 | 3 | TANDEM CLAMPING HALVES BEHRINGER (PAIR) | HYDROSTAT HOSES |
| NS | MC-137531 | 3 | COVER PLATE 5/16" HOLE (BEHRINGER) | HYDROSTAT HOSES |
| NS | F-HC-08M090F | 2 | HC-8.8 M8 X 1.25 X 90 | BEHRINGER CLAMP FOR HYDRO HOSES |
| NS | F-HCF-08M0100F | 2 | FLHC-8.8 M8 X 1.25 X 100 | BEHRINGER CLAMP FOR HYDRO HOSES |
| NS | F-HC-08M120F | 1 | HC-8.8 M8 X 1.25 X 120 | BEHRINGER CLAMP FOR HYDRO HOSES |
| NS | F-HNF-08ME | 5 | FLHN- 10.9 M8 X 1.25 | BEHRINGER CLAMP FOR HYDRO HOSES |
| NS | MC-135631 | 2 | CLAMP, HOSE 1-1/2 R/C 3/8" HOLE | CLAMP, GREASE LINES/ TRIM HOSES |
| NS | HC-142061 | 1 | SLEEVE, ABRASION, SHIFT CABLE 36" | HOSE BETWEEN HEADER LIFT CYLINDERS |
| NS | HC-139221 | 2 | CLAMP, 1/4" TUBE TANDEM (PAIR) | BRAKE LINES |
| NS | HC-139231 | 4 | CLAMP, COVER PLATE FOR 1/4" TUBE CLAMP | BRAKE LINES |
| NS | F-HCF-8M050E | 2 | FLHC-10.9 M8 X 1.25 X 50 | BRAKELINE TANDEM CLAMP |
| NS | F-HNF-08ME | 2 | FLHN-10.9 M8 X 1.25 | BRAKELINE TANDEM CLAMP |
| NS | HC-133541 | 1 | ABRASION SLEEVE, NYLON -- 2.19" ID X 32" | LEVELING AND TRIM HOSES FROM OC |
| NS | HC-143601 | 1 | CLAMP, HOSE 1-1/8" R/C 3/8" HOLE | CLAMP TRIM HOSES UNDER FEEDER HOUSE |
| NS | HC-143601 | 2 | CLAMP, HOSE 1-1/8" R/C 3/8" HOLE | CASE DRAIN HOSE |
| NS | MC-101343 | 2 | CLAMP, HOSE 2-7/16" R/C 3/8" HOLE | PRESSURE AND RETURN HOSES ABOVE HYDRO HOSES |
| NS | F-HCF-8M020E | 2 | FLHC-10.9 M8 X 1.25 X 20 | HOSE CLAMPS FROM MANIFOLD TO OC |
| NS | F-HNF-8ME | 2 | FLHN-10.9 M8 X 1.25 | HOSE CLAMPS FROM MANIFOLD TO OC |
| NS | HC-135791 | 4 | CLAMP, HOSE 7/8" R/C 3/8" HOLE | SHIFTING CABLE & HDR LIFT CYL HOSE |
| NS | HC-143581 | 1 | ABRASION SLEEVE, NYLON -- 1.22" ID X 24" | MSTR CYL HOSES ON OC RIGHT SIDE |
| NS | HC-143581 | 1 | ABRASION SLEEVE, NYLON 1.22" ID X 24" | SLAVE CYLINDER HOSES THRU FEEDER PIVOT AREA |
| NS | HC-143701 | 1 | ABRASION SLEEVE, NYLON 1.22" ID X 36" | ON TRIM HOSES NEAR SLAVE CYLINDER |

8 PART NUMBER INDEX

| PART NUMBER | PAGE NUMBER | | PART NUMBER | PAGE NUMBER | | PART NUMBER | PAGE NUMBER |
|----------------|-------------|--|----------------|-----------------------------|--|---------------|-------------|
| D-040820CLA01C | 7-1 | | F-HCF-05C08 | 6-4 | | HA-K-6MF6MO | 6-6 |
| D-070328ADL01A | 7-1 | | F-HCF-08M0100F | 7-1 | | HA-L-10MO12MF | 6-6 |
| D-252420LJH01A | 7-1 | | F-HCF-08M070E | 3-6 | | HA-L-12MF12MO | 6-6 |
| EC-100164 | 5-2 | | F-HCF-10M035E | 2-4 | | HA-L-12MF16MO | 6-6 |
| EC-100165 | 5-2 | | F-HCF-10M035E | 3-4, 3-6 | | HA-L-12MO12MO | 6-6 |
| EC-100557 | 5-2 | | F-HCF-10M040E | 3-4 | | HA-L-2FP2MP | 6-6 |
| EC-100692 | 5-2 | | F-HCF-12M040E | 2-4 | | HA-L-4FF4MF | 6-6 |
| EC-133281 | 5-2 | | F-HCF-12M040F | 3-4 | | HA-L-4MF6MO | 6-6 |
| EC-136631 | 5-2 | | F-HCF-16M040E | 2-4 | | HA-L-6FF6MF | 6-6 |
| EC-136701 | 5-2 | | F-HCF-16M060E | 4-2 | | HA-L-6MF6MO | 6-6 |
| EC-136711 | 5-2 | | F-HCF-8M020E | 2-4, 3-4, 3-6, 6-2, 6-4, 71 | | HA-L-6MF8MO | 6-6 |
| EC-138781 | 5-2 | | F-HCF-8M050E | 7-1 | | HA-L-6MO6MO | 6-6 |
| EC-139631 | 5-2 | | F-HN8-07C | 6-2 | | HA-L-8MF8MO | 6-6 |
| EC-139641 | 5-2 | | F-HNF-#10C | 5-2 | | HA-M-6FF6MF | 6-6 |
| EC-140781 | 5-2 | | F-HNF-#6C | 6-4 | | HA-NJ-2FN | 6-6 |
| EC-140801 | 5-2 | | F-HNF-04C | 5-2 | | HA-Q-8FF8MF | 6-6 |
| EC-141741 | 5-2 | | F-HNF-08ME | 2-4, 3-4, 3-6, 6-4, 71 | | HA-S-12MF16FF | 6-6 |
| EC-141751 | 5-2 | | F-HNF-10M020E | 6-2 | | HA-S-16MF16MO | 6-6 |
| EC-141761 | 5-2 | | F-HNF-10ME | 3-4, 3-6 | | HA-S-2FP2MN | 6-6 |
| EC-141771 | 5-2 | | F-HNF-16ME | 2-4, 3-4 | | HA-S-4MF8MO | 6-6 |
| EC-141781 | 5-2 | | F-HNF-8ME | 3-4, 6-2, 7-1 | | HA-S-8MF12MO | 6-6 |
| EC-141791 | 5-2 | | F-HNJ-10MF | 3-6 | | HA-T-16MF16MO | 6-6 |
| EC-141801 | 5-2 | | F-HNN-10MF | 2-4 | | HA-Y-4MF4MF | 6-6 |
| EC-141831 | 5-2 | | F-HNN-8MF | 3-2 | | HC-101034 | 6-4 |
| EC-142121 | 5-2 | | F-HNS-10ME | 2-4, 3-4 | | HC-101843 | 6-2, 6-5 |
| EC-143271 | 5-2 | | F-HNS-12C | 3-4 | | HC-133541 | 7-1 |
| EC-143281 | 5-2 | | F-HNS-12ME | 3-4 | | HC-134201 | 6-2 |
| EC-143301 | 5-2 | | F-HNS-16ME | 2-4, 4-2 | | HC-1343991 | 6-4 |
| EC-143311 | 5-2 | | F-HNS-8ME | 2-4 | | HC-134911 | 6-2 |
| EC-143321 | 5-2 | | F-LW-#10 | 6-4 | | HC-135771 | 6-6 |
| EC-143331 | 5-2 | | F-LW-04 | 5-2 | | HC-135791 | 7-1 |
| EC-143421 | 5-2 | | F-LWE-04 | 5-2 | | HC-137891 | 6-2 |
| EC-143811 | 5-2 | | F-LWH-07 | 6-2 | | HC-137901 | 6-2 |
| ET-ST-20#10 | 5-2 | | F-LWHC-07 | 6-2 | | HC-138011 | 6-6 |
| ET-ST-2004 | 5-2 | | F-MB-14NR40 | 2-4 | | HC-138581 | 2-2, 6-2 |
| F-CB-10M050F | 2-4 | | F-MB-18WR12 | 3-6 | | HC-138901 | 3-2, 6-2 |
| F-CB-16M050E | 2-4 | | F-PCT-02X16 | 2-4 | | HC-139161 | 6-2 |
| F-FHS-8M030E | 2-4 | | F-PHM-#10C16 | 5-2 | | HC-139171 | 6-2 |
| F-FWF-06020 | 3-4 | | F-PHM-#10C28 | 5-2 | | HC-139221 | 7-1 |
| F-FWH-10 | 4-2 | | F-PHM-#6C06 | 5-2 | | HC-139231 | 7-1 |
| F-FWHD-10 | 3-4 | | F-PHM-#6C08 | 6-4 | | HC-139871 | 6-4 |
| F-HC-08M090F | 7-1 | | F-PHM-04C24 | 5-2 | | HC-140291 | 6-4 |
| F-HC-08M120F | 7-1 | | F-PHM-04C36 | 5-2 | | HC-140312 | 3-2, 6-2 |
| F-HC-10M070E | 2-4 | | F-SHC-#10C32 | 6-4 | | HC-140341 | 3-2, 6-2 |
| F-HC-16M050E | 2-4 | | F-SHC-04C28 | 6-4 | | HC-140361 | 6-2 |
| F-HC-16M110E | 3-4 | | F-SHC-07C20 | 6-2 | | HC-140411 | 6-4 |
| F-HC-16M120E | 2-4, 3-4 | | F-SHC-24M080E | 3-4 | | HC-141281 | 6-2 |
| F-HC-16M250E | 4-2 | | F-SSS-04F04 | 6-2 | | HC-142061 | 7-1 |
| F-HC5-04C12 | 5-2 | | F-UDS-#7X06 | 3-4 | | HC-142451 | 6-2 |
| F-HC8-07C24 | 6-2 | | HA-133131 | 6-5 | | HC-142731 | 6-4 |
| F-HC8-07C44 | 6-2 | | HA-A-12MO | 6-6 | | HC-142971 | 6-4 |
| F-HC8-07C52 | 6-2 | | HA-A-8MO | 6-6 | | HC-142981 | 6-4 |
| F-HC8-12C240 | 3-4 | | HA-E-4MF | 6-6 | | HC-142991 | 6-4 |
| F-HC-8M020E | 2-4 | | HA-E-6MF | 6-6 | | HC-143001 | 6-4 |

Model 2955S Hillco Leveling System
For Serial Numbers 2955S-1201 thru 2955S-1299
PART NUMBER INDEX (CONTINUED)

| PART NUMBER | PAGE NUMBER | PART NUMBER | PAGE NUMBER | PART NUMBER | PAGE NUMBER |
|-------------|-------------|-------------|-------------|-------------|-------------|
| HC-143011 | 6-4 | LA-253082 | 3-2 | LM-258781 | 3-2 |
| HC-143061 | 6-4 | LA-253141 | 3-2 | LM-260211 | 6-4 |
| HC-143071 | 6-4 | LA-253163 | 2-2 | LM-260591 | 3-2 |
| HC-143081 | 6-4 | LA-253223 | 2-2 | LM-260821 | 2-2 |
| HC-143091 | 6-4 | LA-253443 | 3-2 | LM-260871 | 6-4 |
| HC-143101 | 6-2 | LA-253882 | 2-2, 3-2 | LM-261081 | 6-2 |
| HC-143361 | 6-2 | LA-255621 | 5-2, 5-4 | LM-261091 | 3-2 |
| HC-143371 | 6-2 | LA-255631 | 5-4 | LM-261601 | 3-6 |
| HC-143441 | 6-2 | LA-255642 | 5-4 | LM-261611 | 3-6 |
| HC-143581 | 6-5, 7-1 | LA-255721 | 5-4 | LP-230241 | 3-2 |
| HC-143601 | 7-1 | LA-255731 | 5-4 | LP-235092 | 4-2 |
| HC-143701 | 6-5 | LA-255821 | 5-2, 5-4 | LP-247961 | 3-2 |
| HC-143731 | 6-4 | LA-255971 | 3-2, 7-1 | LP-250041 | 6-4 |
| HC-143741 | 6-4 | LA-259312 | 5-2 | LP-250533 | 2-2 |
| HC-143971 | 6-4 | LA-260221 | 5-4 | LP-250551 | 2-2 |
| HC-143981 | 6-4 | LA-260231 | 5-4 | LP-253452 | 2-2 |
| HC-144001 | 6-4 | LA-260241 | 5-4 | LP-254431 | 3-2 |
| HC-145181 | 6-4 | LA-260251 | 5-4 | LP-260791 | 2-2 |
| HC-145191 | 6-4 | LA-260261 | 5-2 | LP-260901 | 2-2 |
| HC-145201 | 6-4 | LA-260361 | 5-4 | LP-260911 | 2-2 |
| HC-145211 | 6-4 | LA-260771 | 2-2 | LP-261031 | 6-4 |
| HC-145221 | 6-4 | LA-260851 | 2-2 | LP-261111 | 6-2 |
| LA-130371 | 6-5 | LA-260861 | 2-2 | LP-261121 | 3-2 |
| LA-139101 | 6-5 | LA-260891 | 2-2 | LP-261351 | 2-2 |
| LA-139112 | 6-5 | LA-261021 | 2-2 | LP-261431 | 3-2, 5-2 |
| LA-139122 | 6-5 | LA-261141 | 5-4 | LP-261531 | 3-2 |
| LA-139132 | 6-5 | LA-261151 | 5-4 | LP-261651 | 3-6 |
| LA-141081 | 6-5 | LA-261161 | 5-4 | LP-261671 | 4-2 |
| LA-141092 | 6-5 | LA-261171 | 5-4 | LP-261681 | 4-2 |
| LA-141102 | 6-5 | LA-261371 | 3-2 | LTP-241721 | 2-2 |
| LA-141131 | 6-5 | LA-261481 | 5-4 | MC-101343 | 7-1 |
| LA-141141 | 6-5 | LA-261621 | 3-6 | MC-135531 | 2-2 |
| LA-141151 | 6-5 | LA-261631 | 3-6 | MC-135631 | 7-1 |
| LA-141502 | 6-5 | LA-261661 | 5-4 | MC-135791 | 7-1 |
| LA-143501 | 6-5 | LA-261691 | 5-4 | MC-137521 | 7-1 |
| LA-143511 | 6-5 | LL-133741 | 7-1 | MC-137531 | 7-1 |
| LA-143521 | 6-5 | LL-141301 | 7-1 | MC-138641 | 3-2 |
| LA-143531 | 6-5 | LL-143621 | 7-1 | MC-138651 | 3-2 |
| LA-143541 | 6-5 | LL20-100782 | 7-1 | MC-141331 | 2-2 |
| LA-143551 | 6-5 | LL20-100783 | 7-1 | MC-141551 | 3-2 |
| LA-143561 | 6-5 | LL20-100784 | 7-1 | MC-142261 | 2-2 |
| LA-143571 | 6-5 | LL20-100786 | 7-1 | MC-142921 | 3-2 |
| LA-143801 | 6-5 | LL20-100787 | 7-1 | MC-143451 | 2-2 |
| LA-143831 | 6-5 | LL20-100788 | 7-1 | MC-143591 | 2-2 |
| LA-230552 | 3-2 | LM-226841 | 2-2 | MC-143631 | 2-2 |
| LA-235711 | 3-2 | LM-229192 | 2-2 | MC-143641 | 2-4 |
| LA-246702 | 4-2 | LM-250541 | 2-2 | MC-143711 | 3-4 |
| LA-247482 | 3-2 | LM-250561 | 2-2 | MC-143721 | 3-4 |
| LA-248452 | 5-4 | LM-250571 | 2-2 | MC-143751 | 3-6 |
| LA-250713 | 2-2 | LM-250581 | 2-2 | MC-143761 | 3-6 |
| LA-252151 | 6-5 | LM-255331 | 5-2 | MC-143771 | 3-6 |
| LA-252462 | 5-4 | LM-255341 | 5-2 | MC-143781 | 3-6 |
| LA-252472 | 5-4 | | | | |