

Model 2965H Hillco Leveling System
For Serial Numbers 2965H-15001 thru 2965H-15999



Model 2965H Hillside Leveling System Parts Manual

SN J2965H-15001 thru 2965H-15999
For John Deere 9660 WTS Combines

D-150615CMA01D



2965H Hillside Leveling System

For 9660 WTS Combines

Table of Contents

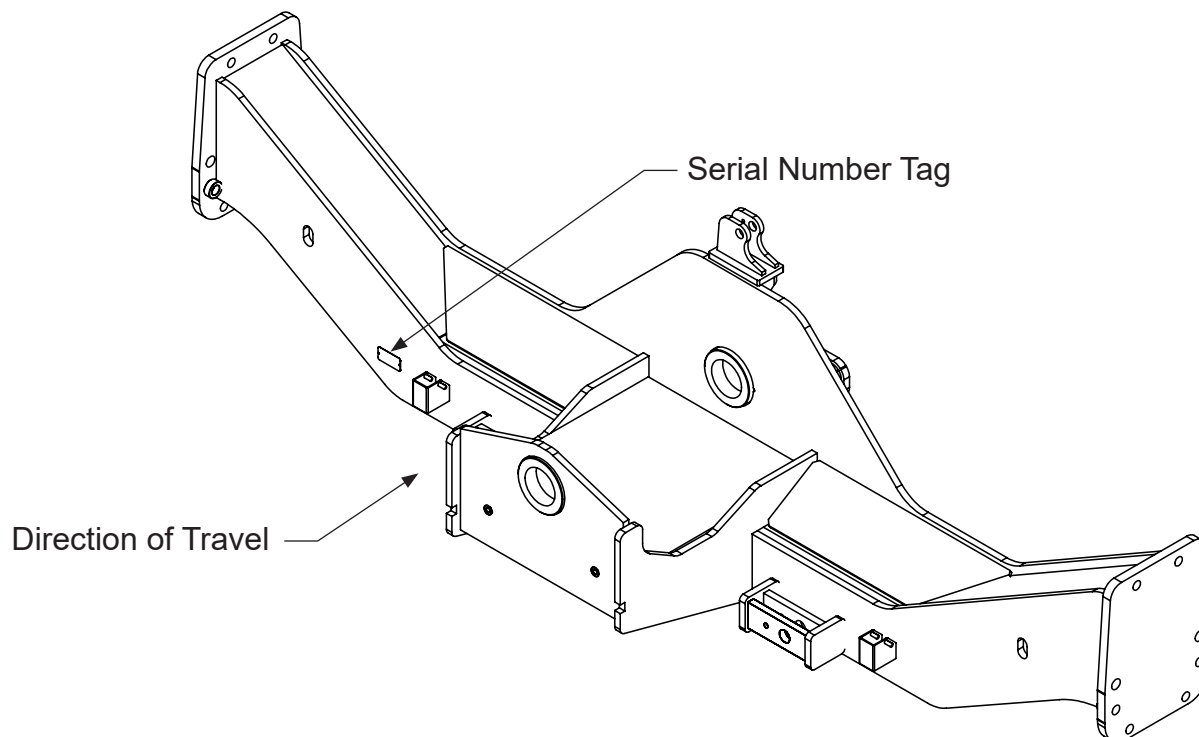
General Information	3
Serial Number Location	3
Text and Illustrations	3
Abbreviations	3
Right and left Identification	3
Part Orders	3
Transition	4
Transition Throat	5
Transition Beater Drive	7
Radial Pin Slip Clutch	9
Transition Middle	10
Header Position Sensor Tilt Sensor	11
Transition Header Adapter	12
Carriage	13
Overcarriage	14
Undercarriage	16
Carriage Position Sensor	17
Drive Wheel	19
Drop Axle	20
Hydraulic Components	21
Hydro Hoses & Case Drain	21
Leveling Cylinders & Hoses	23
Master & Slave Cylinders & Hoses	24
Leveling Manifold	25
Header Trim Manifold	27
Header Lift	28
Brake Line Extensions & Shift Cable Extension	30
Gear Pump	31
Retractable Ladder	33
Ladder Wedge	31
Electrical	35
Controller/Wiring Harnesses	35
Decals and Literature	37

Contact Information

Hillco Technologies, Inc. 107 1st Avenue Nezperce, Idaho 83543	www.hillcotechologies.com email: support@hillcotechologies.com	Phone Fax	800-937-2461 208-937-2461 208-937-2280
--	---	--------------	--

GENERAL INFORMATION

SERIAL NUMBER LOCATION



TEXT AND ILLUSTRATIONS

The arrangement of this parts catalog is for easy identification of parts. All parts are illustrated in exploded views in proper relation to each other. Some diagrams refer to other pages for further information. Reference numbers used in the illustrations refer to line numbers in the part lists. The part lists appear to the right or below all diagrams and correspond with those diagrams. Included in the part lists, along with the reference numbers are part numbers, part descriptions and the quantity of the part required per leveling system.

ABBREVIATIONS

SN "Serial Number" refers to the serial number given to each leveling system (by Hillco Technologies), as well as the serial number given to the combine (by the specific combine manufacturer) the leveling system is installed. See above for the leveling system's serial number location. This abbreviation is used interchangeably in both instances. Each Model 2965H Leveling System uses the following serial number format: 2965H-XXXXX (sequential numbers).

ASM "Assembly" refers to a whole grouping of parts (shown in the diagram corresponding with the page where "ASM" is shown unless otherwise noted). Some assemblies have parts that are sold separately, however some must be purchased as a single unit. Hillco Product Specialists will be able to assist you with any questions.

NS "Not Shown" refers to a part that is not depicted in the illustration.

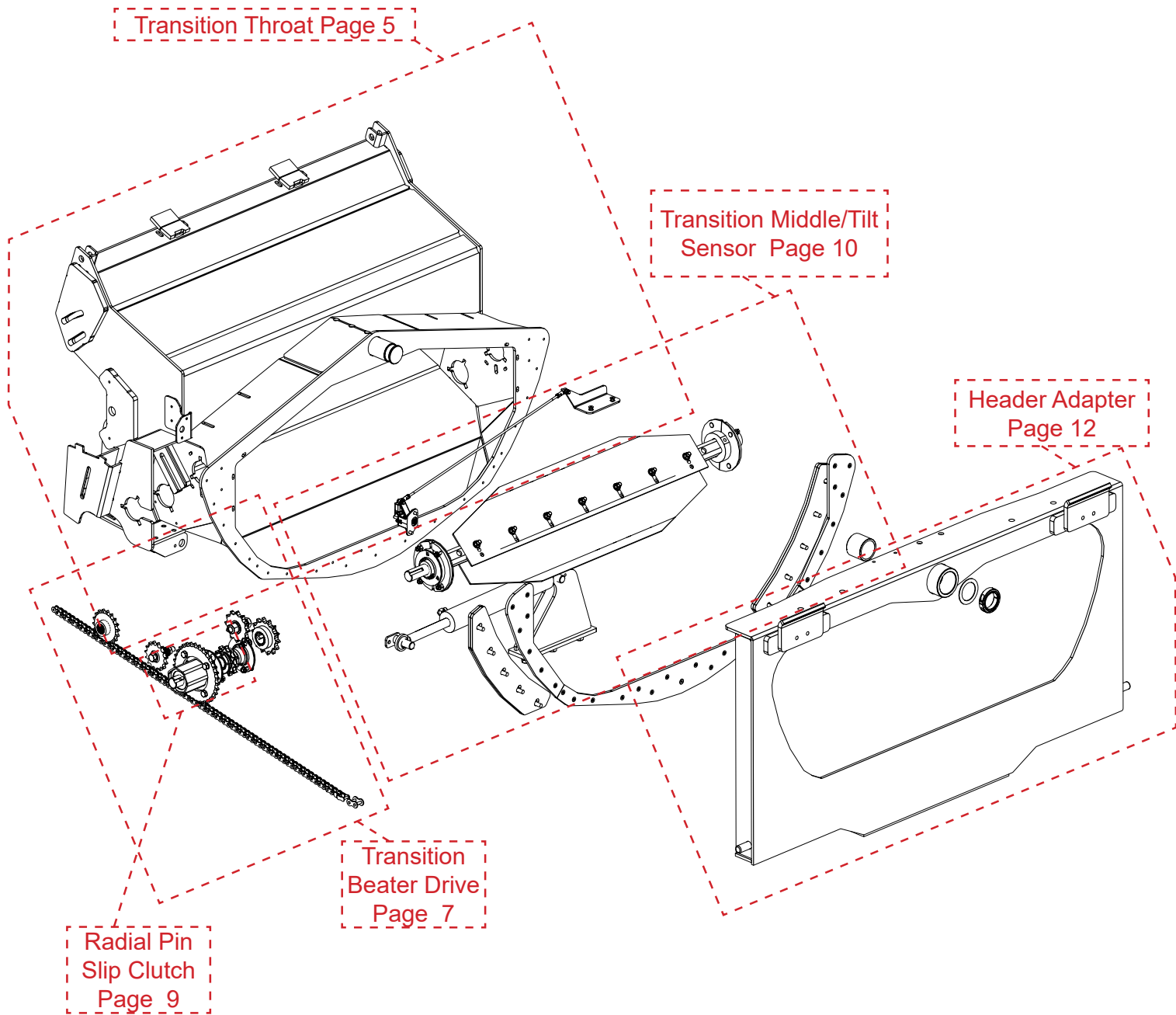
RIGHT AND LEFT IDENTIFICATION

The reference to right-hand and left-hand in this catalog is identified by the operator sitting in the operator's seat, looking toward the front of the machine (in normal forward travel).

PART ORDERS

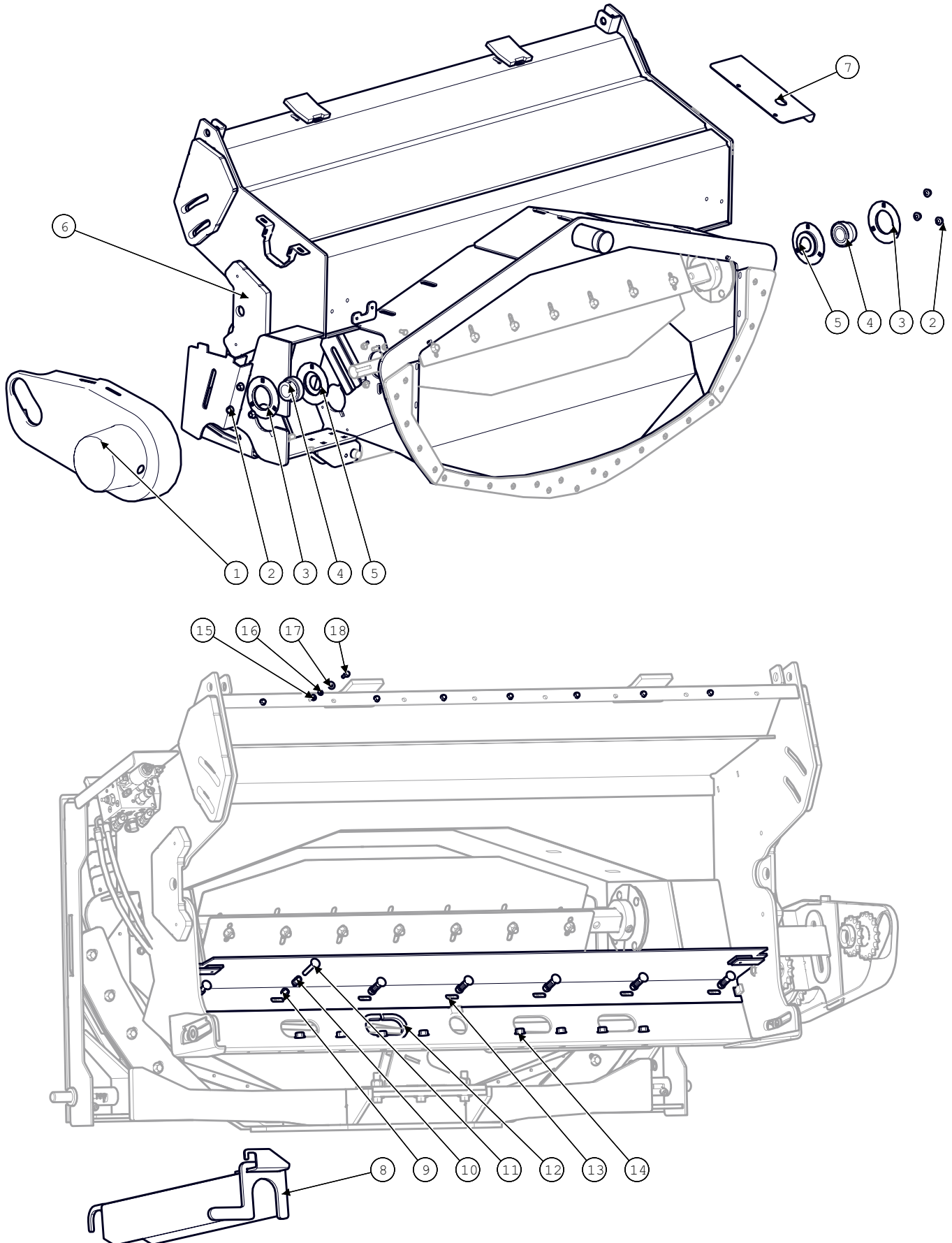
Orders must specify product model, serial number, correct part number, complete description, quantity required, method of shipment, shipping address, and billing address.

TRANSITION



Model 2965H Hillco Leveling System
For Serial Numbers 2965H-15001 thru 2965H-15999

TRANSITION THROAT

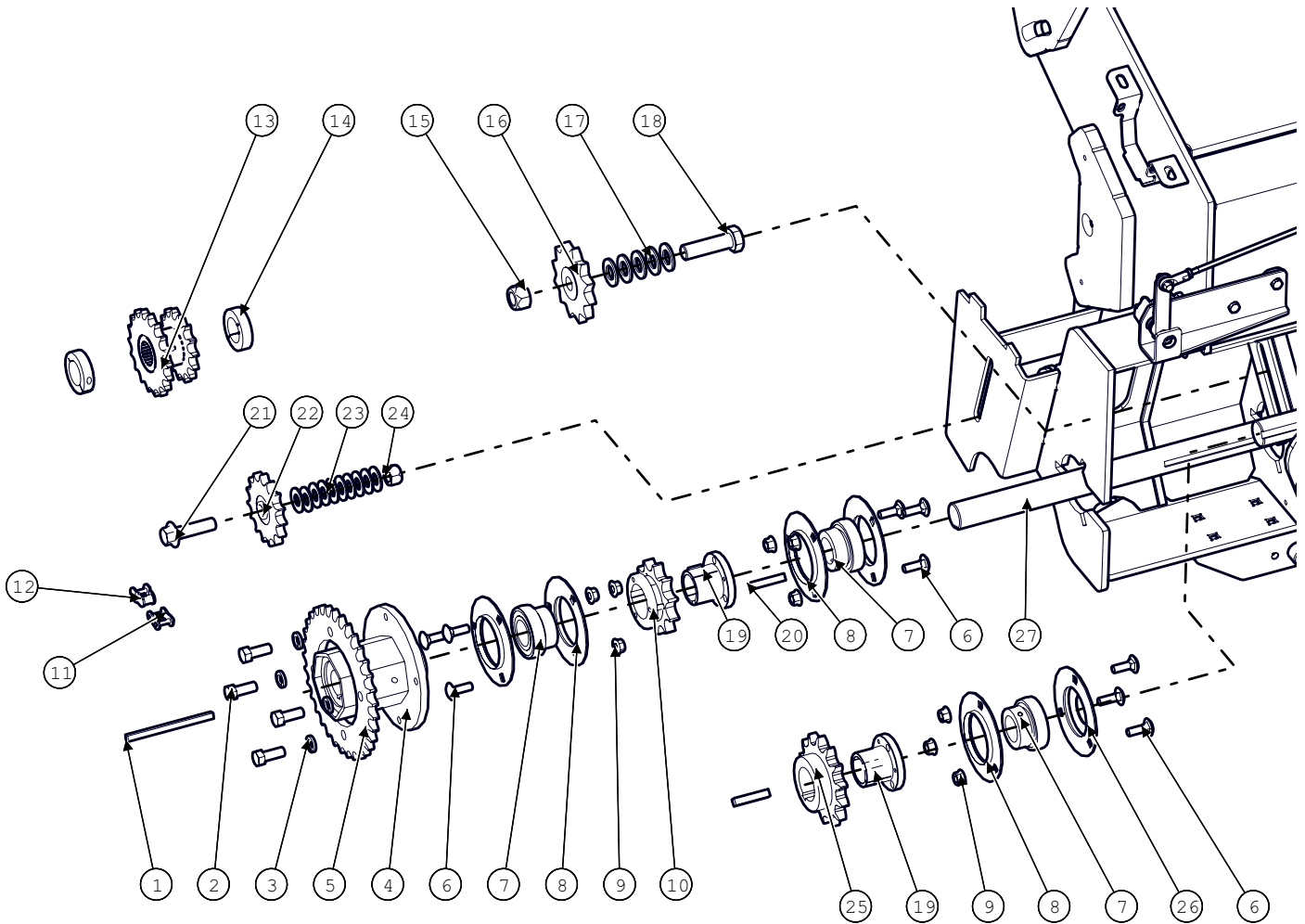


Model 2965H Hillco Leveling System
For Serial Numbers 2965H-15001 thru 2965H-15999

Transition Throat			
BOM ID	Part No.	Qty	Description
1	1147671	1	SHIELD, BEATER DRIVE
2	123.01	6	NUT,HX,FL,CL10 M10
3	101339	2	FLANGETTE,
4	100548	2	INSERT BEARING
5	1243691	2	INNER FLANGETTE
6	1321821	1	THROAT
7	1316461	1	SHIELD, TRIM SHIELD
8	1322831	1	HEADER LIFT STOP
9	191.01	7	NUT,HX,NYL,CL8 M10
10	143591	7	SPRING, COMPRESSION
11	163.010.060	7	BOLT,CARR,CL8.8 M10
12	10114.00168	1	TRIM, RUBBER EDGE,
13	1322681	1	FLEX FLOOR
14	123.012	8	NUT,HX,FL,CL10 M12
15	123.006	8	NUT,HX,FL,CL10 M6
16	136	7	WASHER,LCK,MED-SPLIT 1/4
17	105	7	WASHER,FLT 1/4
18	122.006.020	8	BOLT,HX,FL,CL10.9 M6X20

Model 2965H Hillco Leveling System
For Serial Numbers 2965H-15001 thru 2965H-15999

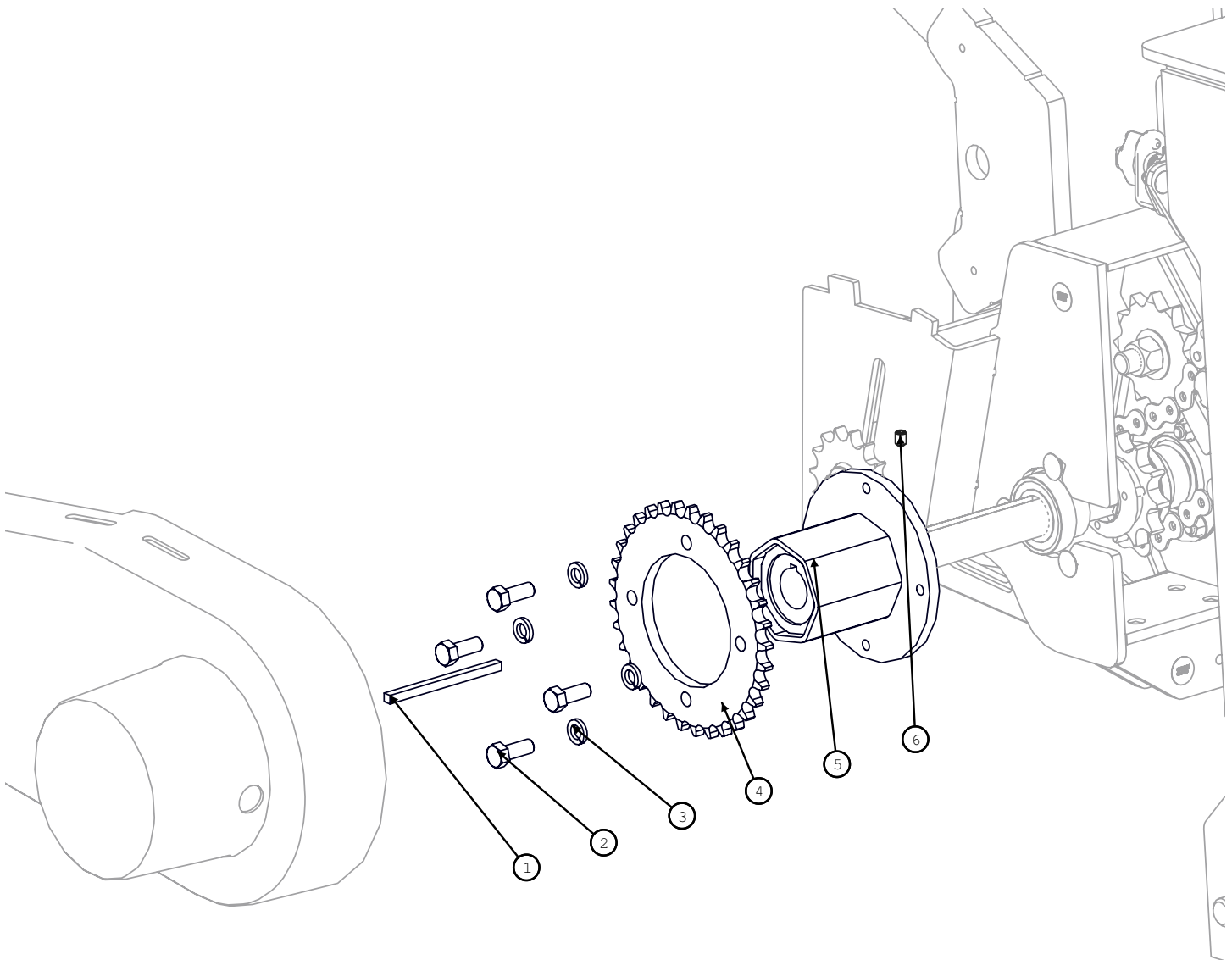
TRANSITION BEATER DRIVE



Model 2965H Hillco Leveling System
For Serial Numbers 2965H-15001 thru 2965H-15999

Paddle Beater			
BOM ID	Part No.	Qty	Description
1	10049.05.00080	1	SQ,1018,CD 5/16X5
2	167.008.020	4	BOLT,HX,GR8 1/2-20X1-1/4
3	139.008	4	WASHER,LCK,HVY-SPLIT 1/2
4	136921	1	SLIP CLUTCH, RADIAL
5	1226532	1	SPROCKET, SLIP CLUTCH
6	163.010.030	9	BOLT,CARR,CL8.8 M10
7	100548	3	INSERT BEARING
8	101339	5	FLANGETTE,
9	123.01	9	NUT,HX,FL,CL10 M10
10	135491	1	SPROCKET, TAPER BORE
11	139361	1	LINK,CONNECTING,60P
12	139371	1	LINK, OFFSET, 60P
13	1263171	1	DRIVE SPROCKET; 15T X 18T
14	142001	2	1 PC SPLIT COLLAR,
15	126.02	1	NUT,HX,STV,CL10 M20
16	137441	1	SPOCKET, IDLER
17	133.012	5	WASHER,L9,HD 3/4
18	121.020.070	1	BOLT,HX,CL10.9 M20X70
19	135511	2	HUB, SPLIT TAPER
20	10049.06.00032	2	SQ,1018,CD 3/8X2
21	122.016	1	BOLT,HX,FL,CL10.9, M16X60
22	100237	1	SPROCKET, IDLER, 60P
23	133.01	10	WASHER,L9,HD 5/8
24	126.016	1	NUT,HX,STV,CL10 M16
25	136151	1	SPROCKET, TAPER BORE
26	1243691	1	INNER FLANGETTE
27	1322271	1	JACK SHAFT
Drive Chains			
NS	10068.073	-	60 PITCH CHAIN - 73PITCHES
NS	10066.029	-	80 PITCH CHAIN - 29 PITCHES

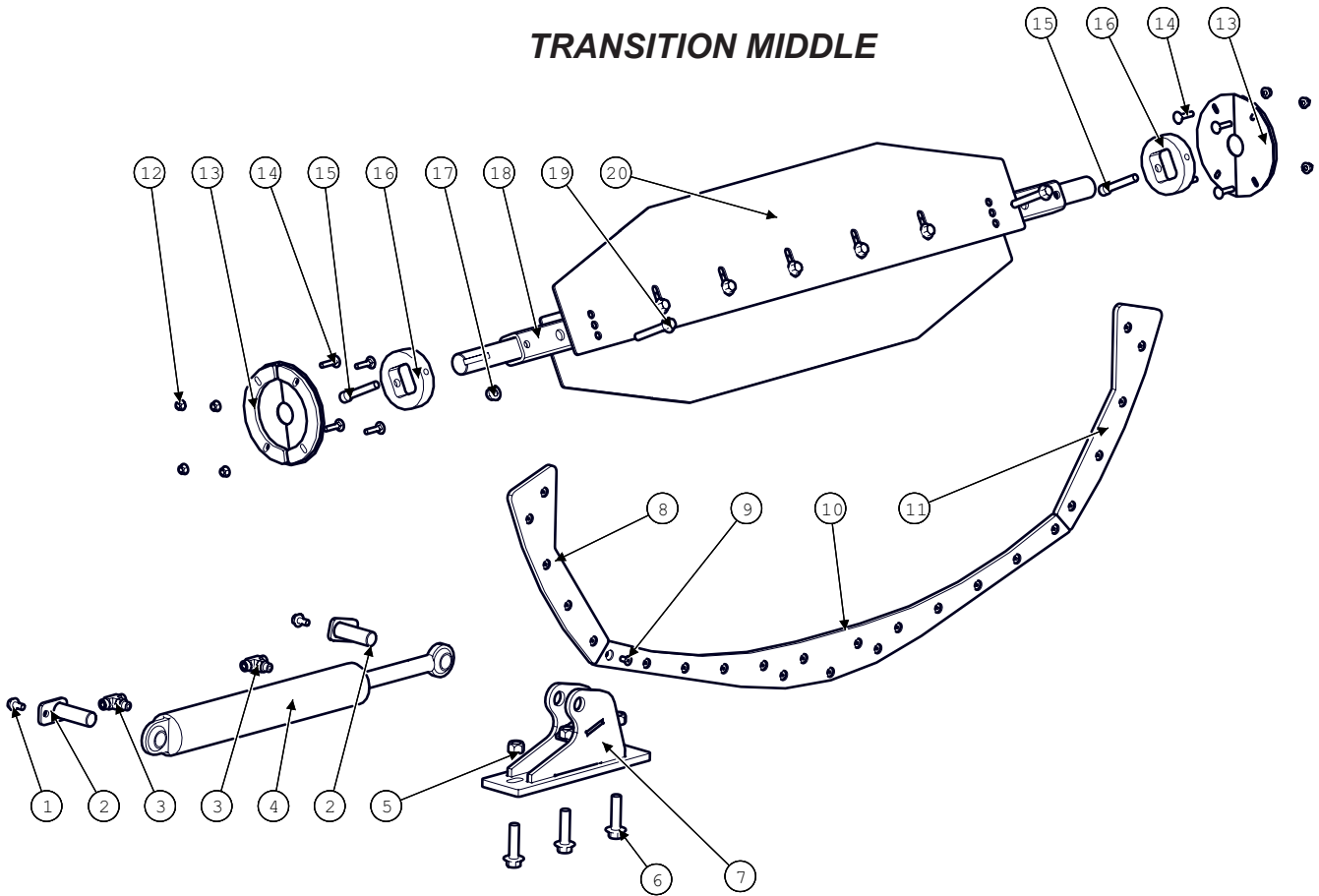
RADIAL PIN SLIP CLUTCH



Radial Pin Slip Clutch			
BOM ID	Part No.	Qty	Description
ASM	LA-242431	1	SLIP CLUTCH ASM, RADIAL PIN
1	10049.05.00080	1	SQ,1018,CD 5/16X5
2	167.008.020	4	BOLT,HX,GR8 1/2-20X1-1/4
3	139.008	4	WASHER,LCK,HVY-SPLIT 1/2
4	1226532	1	SPROCKET, PLATE
5	136921	1	SLIP CLUTCH, RADIAL
6	158.006.008	1	SCREW,SKT,SET 3/8-16X1/2

Model 2965H Hillco Leveling System
For Serial Numbers 2965H-15001 thru 2965H-15999

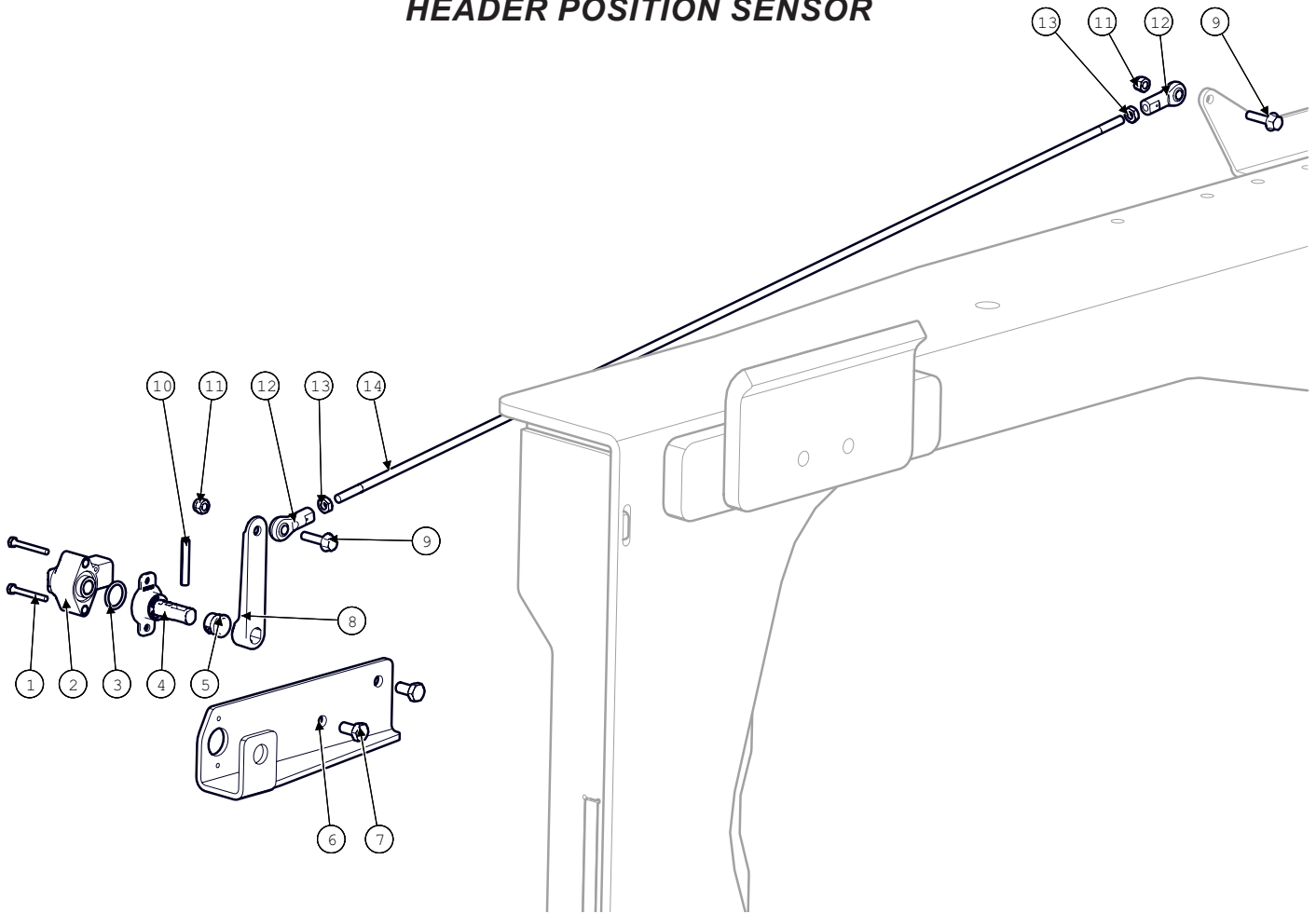
TRANSITION MIDDLE



Transition Middle			
BOM ID	Part No.	Qty	Description
1	122.010.020	2	BOLT,HX,FL,CL10.9 M10X20
2	1229071	2	CYLINDER PIN, TRIM
3	1009.06	2	STR THD, BRANCH,
4	147491	1	CYLINDER,SLAVE,21"CPC
5	126.016	3	NUT,HX,STV,CL10 M16
6	122.016.060	3	BOLT,HX,FL,CL10.9, M16X60
7	1322201	1	ROD MOUNT
8	1229162	1	SIDE WEAR PLATE, L
9	164.008.016	25	SCREW,FHSC,CL10.9 M8X16
10	1322151	1	WEAR PLATE, BOTTOM
11	1229172	1	SIDE WEAR PLATE, R
12	128.008	8	NUT,HX,FL,STV,CL10 M8
13	1286311	4	CAN ASM
14	163.008.035	8	BOLT,CARR,CL8.8 M8X35
15	159.012.075	2	SCREW,SHC,CL12.9 M12X75
16	1286331	2	SHAFT SEAL
17	128.012	7	NUT,HX,FL,STV,CL10 M12
18	1251632	1	BEATER SHAFT
19	122.012.080	7	BOLT,HX,FL,CL10.9 M12X80
20	1286321	2	PADDLE,METAL,NARROW

Model 2965H Hillco Leveling System
 For Serial Numbers 2965H-15001 thru 2965H-15999

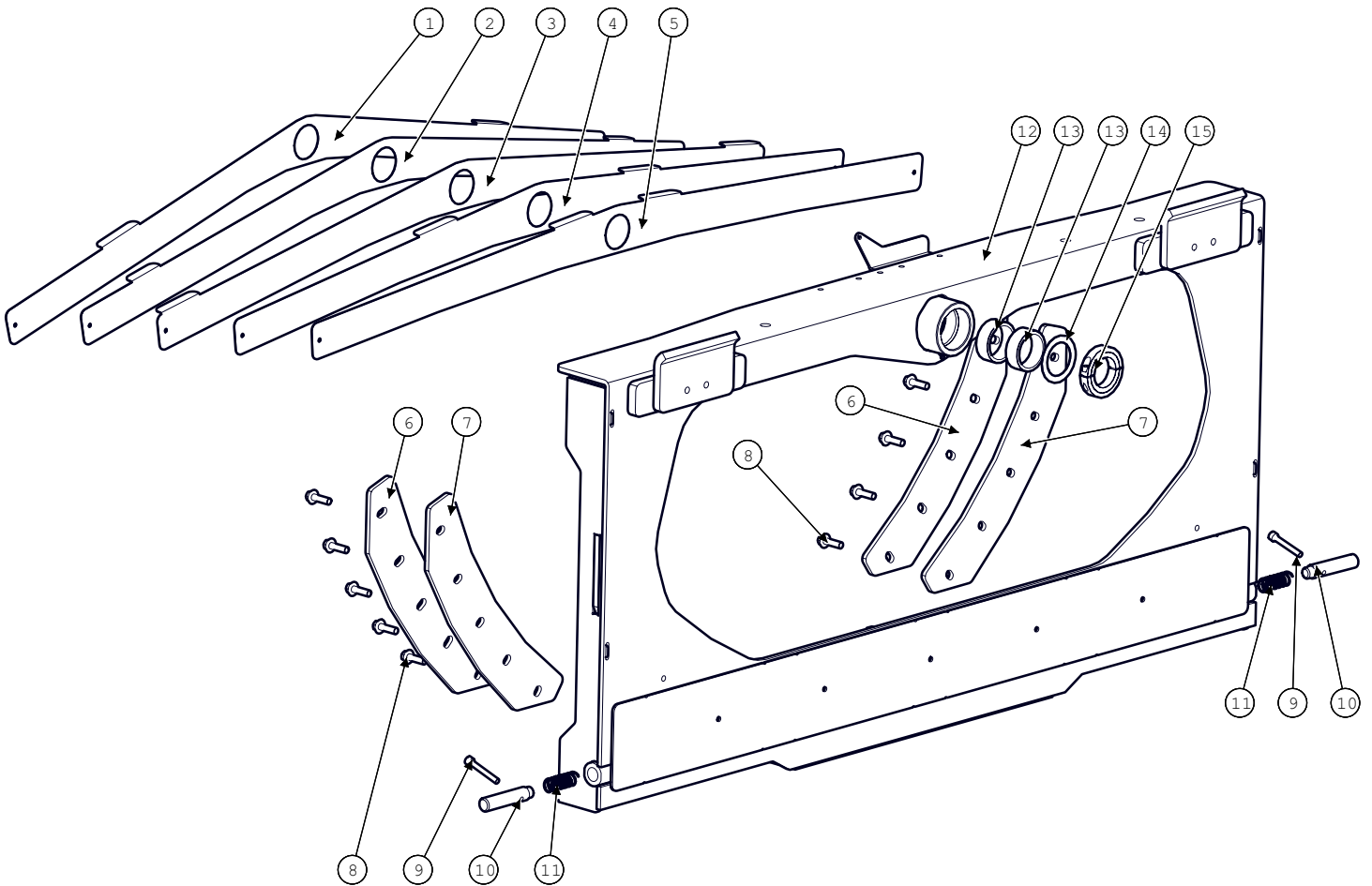
HEADER POSITION SENSOR



Header Position Sensor			
BOM ID	Part No.	Qty	Description
1	170.004.035	2	BOLT, HX,CL8.8
2	151381	1	SENSOR, ROTATION,
3	151391	1	O-RING, 11/16ID
4	151401	1	SENSOR SHAFT,
5	151361	1	BUSHING,
6	1324361	1	SENSOR BRACKET
7	120.008.016	2	BOLT,HX,CL10.9 M8
8	151351	1	ARM, SENSOR
9	122.006.025	2	BOLT,HX,FL,CL10.9 M6X25
10	201.006.036	1	PIN,ROLL M6X36
11	191.006	2	NUT,HX,NYL,CL8 M6
12	151881	2	ROD END, BALL JOINT,
13	174.004	2	NUT,HX,JAM,GR5 1/4-20
14	1324371	1	SENSOR ROD

Model 2965H Hillco Leveling System
For Serial Numbers 2965H-15001 thru 2965H-15999

TRANSITION HEADER ADAPTER



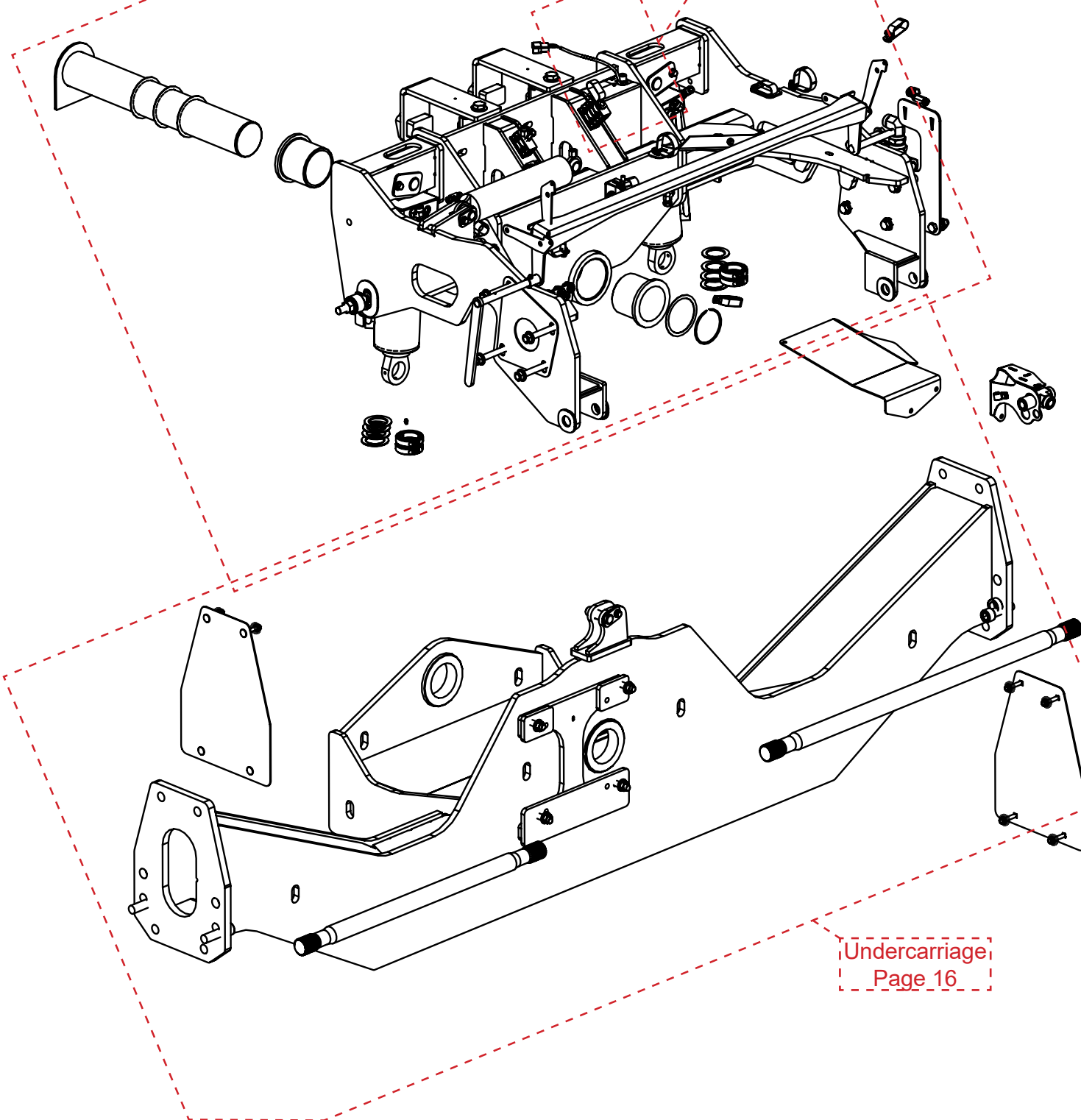
Header Adapter			
BOM ID	Part No.	Qty	Description
1-5	P306131	1	DEFLECTOR ASSEMBLY
1	1306183	1	DEFLECTOR, REAR
2	1306173	1	DEFLECTOR, INNER REAR
3	1306163	1	DEFLECTOR,
4	1306153	1	DEFLECTOR, INNER FRONT
5	1306143	1	DEFLECTOR, FRONT
6	1249861	2	BACKING PLATE
7	1249871	2	WEAR PLATE,
8	122.012.040	10	BOLT,HX,FL,CL10.9 M12X40
9	159.010.070	2	SCREW, SHC, CL12.9
10	1229193	2	LOCKOUT PIN
11	135531	2	SPRING, COMPRESSION
12	1322001	1	HEADER ADAPTER
13	1305471	2	PIVOT BUSHING
14	162.014.040	1	BUSHING,MACH,NR
15	150742	1	COLLAR,CLAMPING,2-1/2 ID 3-3/4 OD, 2 PIECE HEAVY

Model 2965H Hillco Leveling System
For Serial Numbers 2965H-15001 thru 2965H-15999

Carriage

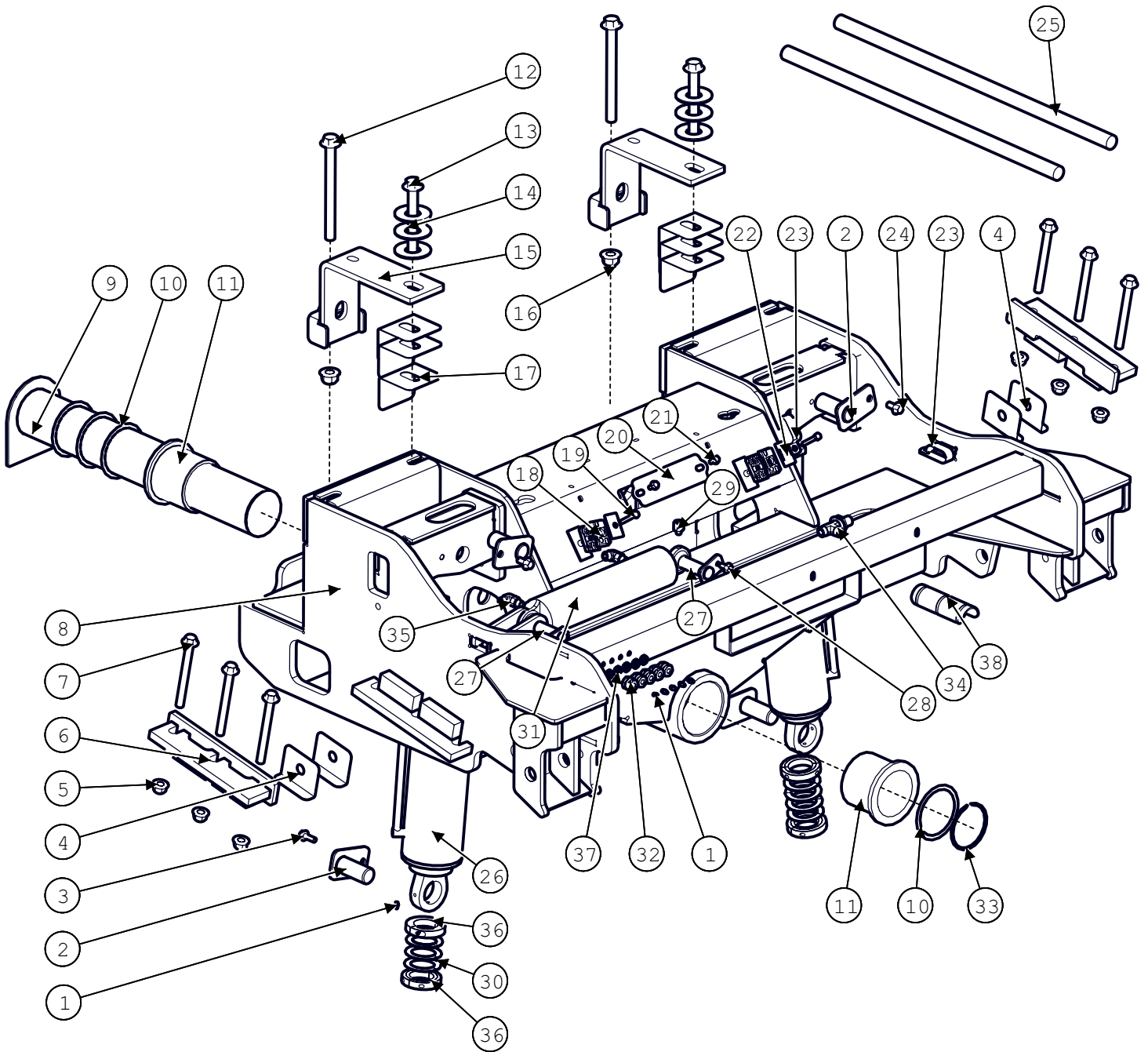
Overcarriage
Page 14

Carriage
Position Sensor
Page 18



Model 2965H Hillco Leveling System
For Serial Numbers 2965H-15001 thru 2965H-15999

Overcarriage

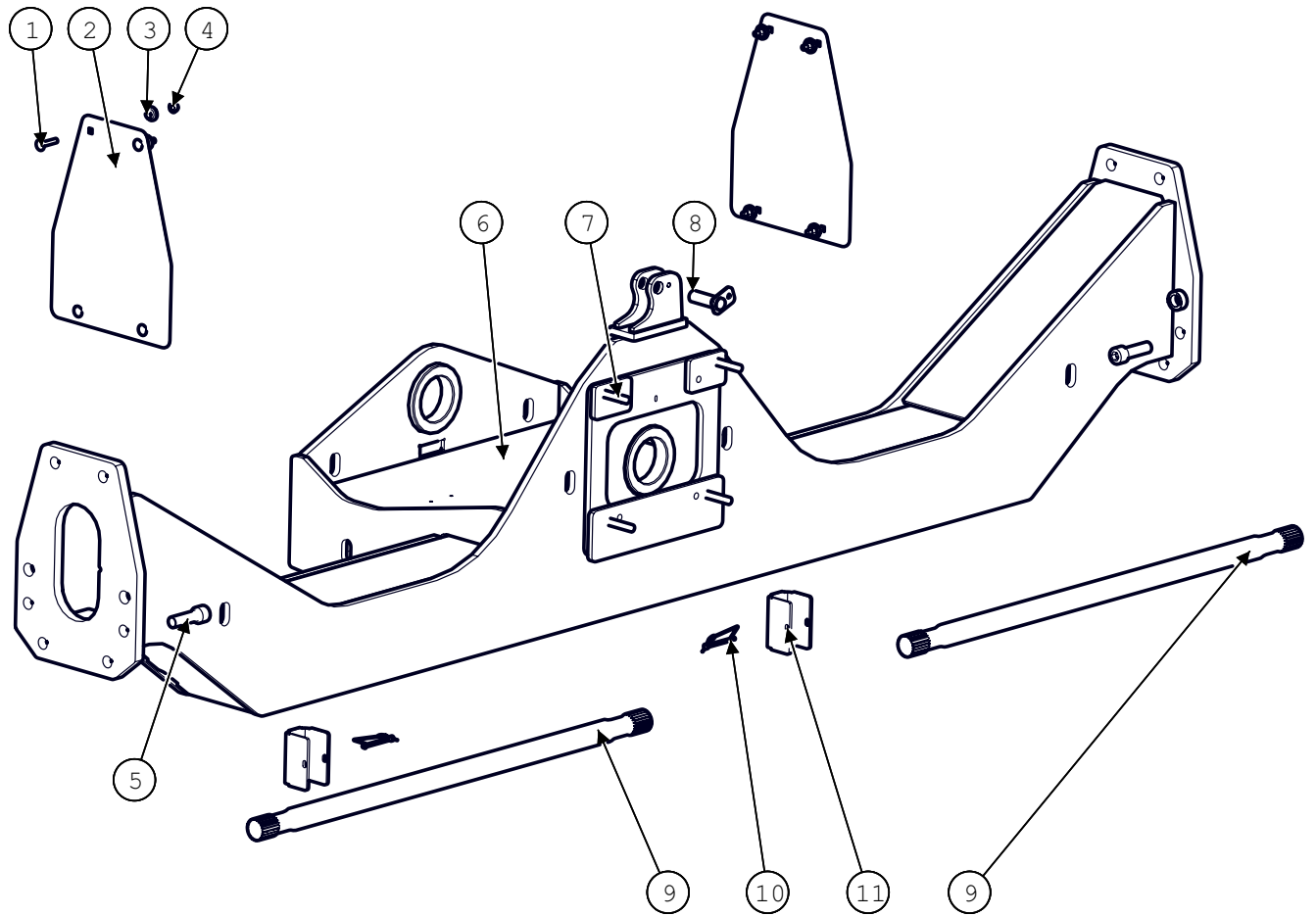


Model 2965H Hillco Leveling System
For Serial Numbers 2965H-15001 thru 2965H-15999

Overcarriage			
BOM ID	Part No.	Qty	Description
1	138011	6	ZERK,STR, 1/4-28MTAPER
2	1230552	4	PIN, MAIN CYLINDER
3	122.010.030	2	BOLT,HX,FL,CL10.9 M10X30
4	1270042	4	CARRIAGE SHIM
5	128.016	6	NUT,HX,FL,STV,CL10 M16
6	1321761	2	CLAMP HALF
7	122.016.160	6	BOLT,HX,FL,CL10.9, M16X160
8	1228453	1	OVER CARRIAGE
9	1291351	1	PIVOT PIN
10	138641	4	WASHER 4.016ID X 4.764OD X.048
11	1247961	2	PIVOT BUSHING
12	122.020.220	2	BOLT,HX,FL,CL10.9 M20
13	122.020.160	2	BOLT,HX,FL,CL10.9 M20
14	105.02	6	WASHER,FLT 1-1/4
15	1321711	2	AXLE CLAMP
16	128.02	3	NUT,HX,FL,STV,CL10 M20
17	1323041	6	CARRIAGE SHIM
18	139481	2	CLAMP, TWIN, BEHRINGER -.620
19	101.005.032	2	BOLT,HX,GR5 5/16-18X2
20	1321742	1	COVER, CONTROLLER
21	111.005.010	2	BOLT,HX,FL,GR5 5/16-18X5/8
22	139231	2	CLAMP, COVER PLATE
23	147781	2	CLAMP 1/4" DOUBLE LOOP 3/8HOLE
24	122.012.025	3	BOLT,HX,FL,CL10.9 M12X25
25	10072.00512	2	SLEEVE, ABRASION, 1.22IDx32"
26	151002	2	CYLINDER, CB VALVE,
27	1229071	2	CYLINDER PIN, TRIM
28	122.010.020	1	BOLT,HX,FL,CL10.9 M10X20
29	135881	1	ADAPTER,GREASE,STR
30	137501	8	WASHER, QUICK REPAIR
31	140342	1	CYLINDER, CROSS PORT
32	155157	5	BULKHEAD,GREASE,STR,
33	138651	1	SNAP RING; 4"
34	1034.08	1	BKHD,RUN -8MORS
35	1003.06.06	2	-6MORB X -6MORFS
36	153241	4	COLLAR, CLAMPING
37	155158	5	BULKHEAD,LOCKNUT
38	155254	1	HOSE PROTECTOR, 2.5W X 6"

Model 2965H Hillco Leveling System
 For Serial Numbers 2965H-15001 thru 2965H-15999

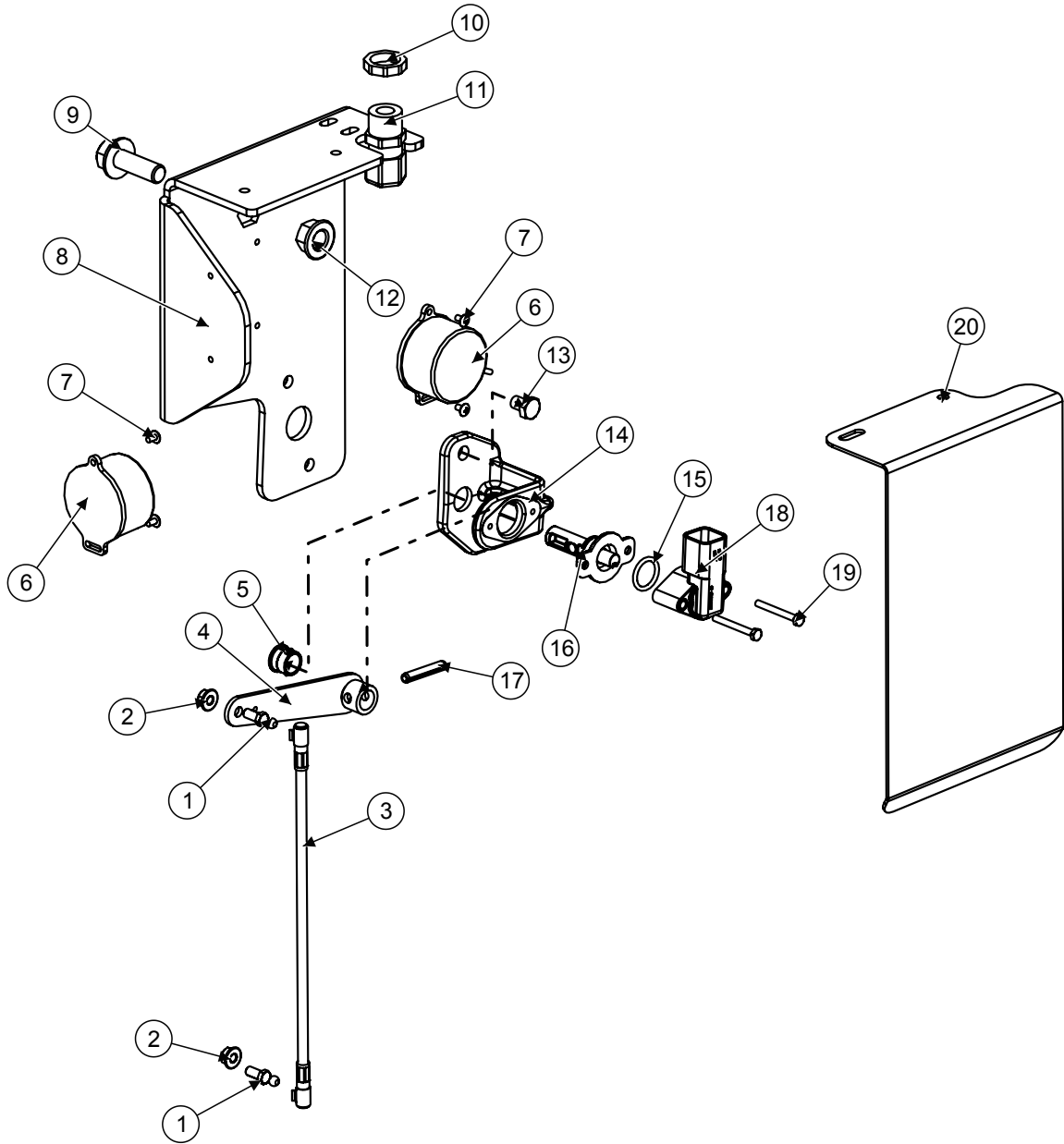
Undercarriage



Undercarriage			
BOM ID	Part No.	Qty	Description
1	163.010.050	8	BOLT,CARR,CL8.8 M10
2	1293831	2	CAP, AXLE
3	151021	8	BUSHING, PLASTIC
4	123.01	8	NUT,HX,FL,CL10 M10
5	159.024.080	4	SCREW,SHC,CL12.9 M24
6	1238271	1	UNDER CARRIAGE 131-7/8"
7	155.016	4	STUD, DOUBLE-10.9
8	1229071	1	CYLINDER PIN, TRIM
9	133081	2	SHAFT, DRIVE, 1209 MM x 18 TOOTH
10	146.004.048	2	PIN,SNAP,LCK
11	1306721	2	CYLINDER STOP

Model 2965H Hillco Leveling System
For Serial Numbers 2965H-15001 thru 2965H-15999

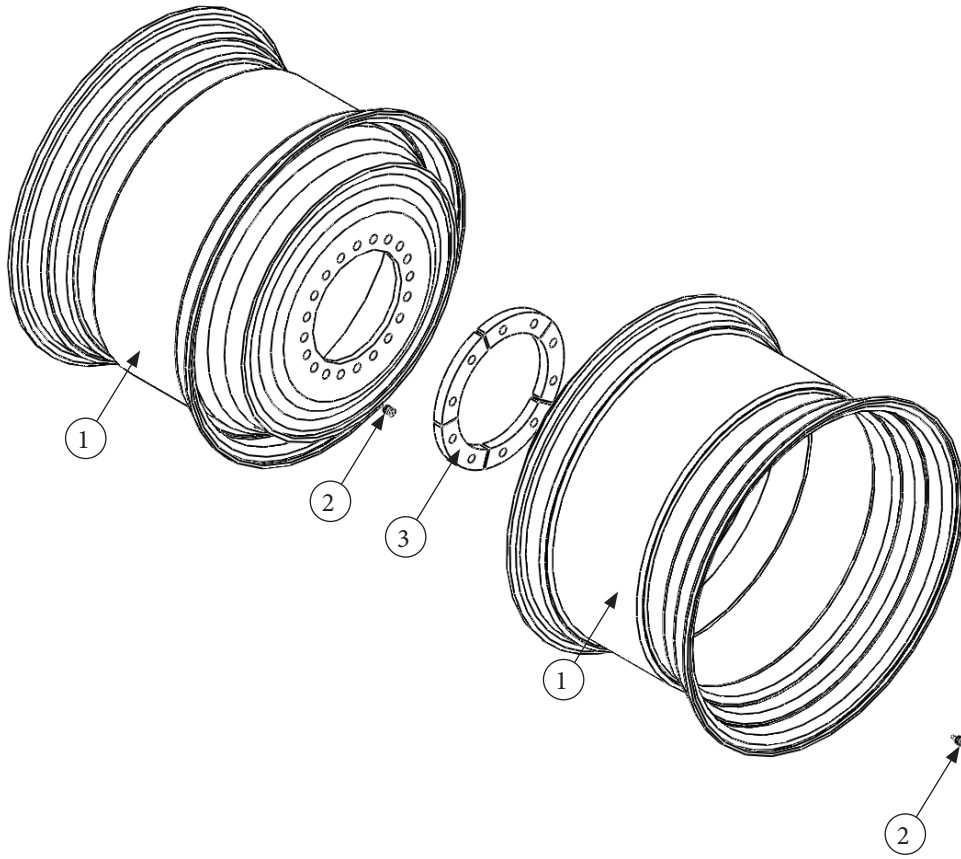
Carriage Position Sensor



Model 2965H Hillco Leveling System
For Serial Numbers 2965H-15001 thru 2965H-15999

Carriage Position Sensor				
BOM ID	Hillco Part No.	John Deere Part No.	Qty	Description
1	151341	H168732	2	BALL STUD (H168732)
2	123.006	-	2	FLHN-10.9M6X1.00
3	151331	AH226146	1	LINKAGE, POSITION (AH226146)
4	151371	AXE17303	1	ARM, ASSY, TILT SENSOR, HM (axe17303)
5	151361	R41076	1	BUSHING, (R41076)
6	141841	-	2	EM ASM, CLINOMETER (Only 1 used on Sidehill's)
7	115.#06.004	-	4	PHMS #6-32X1/4
8	1295142	-	1	EM SHT, SENSOR MNT, CLINOMETER
9	122.012.035	-	1	FLHC 10.9 M12 X 1.75 X 35 PLT
10	142121	-	1	STRAIN RELIEF NUT, 1/2" BLACK
11	138781	-	1	STRAIN RELIEF, NYLON, BLK,
12	123.012	-	1	FLHN-10.9 M12 x 1.75 PLT
13	170.008.010	19m7008	2	HC-8.8M8X1.25X10 (19m7008)
14	151321	HXE16001	1	BRACKET, SENSOR MNT (HXE16001)
15	151391	P48347	1	O-RING, 11/16ID (P48347)
16	151401	AXE14888	1	SHAFT, ROUGH SERVICE DEVICE (AXE14888)
17	201.006.036	-	1	PIN, ROLL 6mm x 36mm
18	151381	AXE14246	1	SENSOR, ROTATION, HALL 2CH +/-120DE (axe14246)
19	170.004.035	19M9368	2	HC-8.8M4X0.7X035 (19m9368)
20	1303151	-	1	EM SHT, SHIELD SENSOR

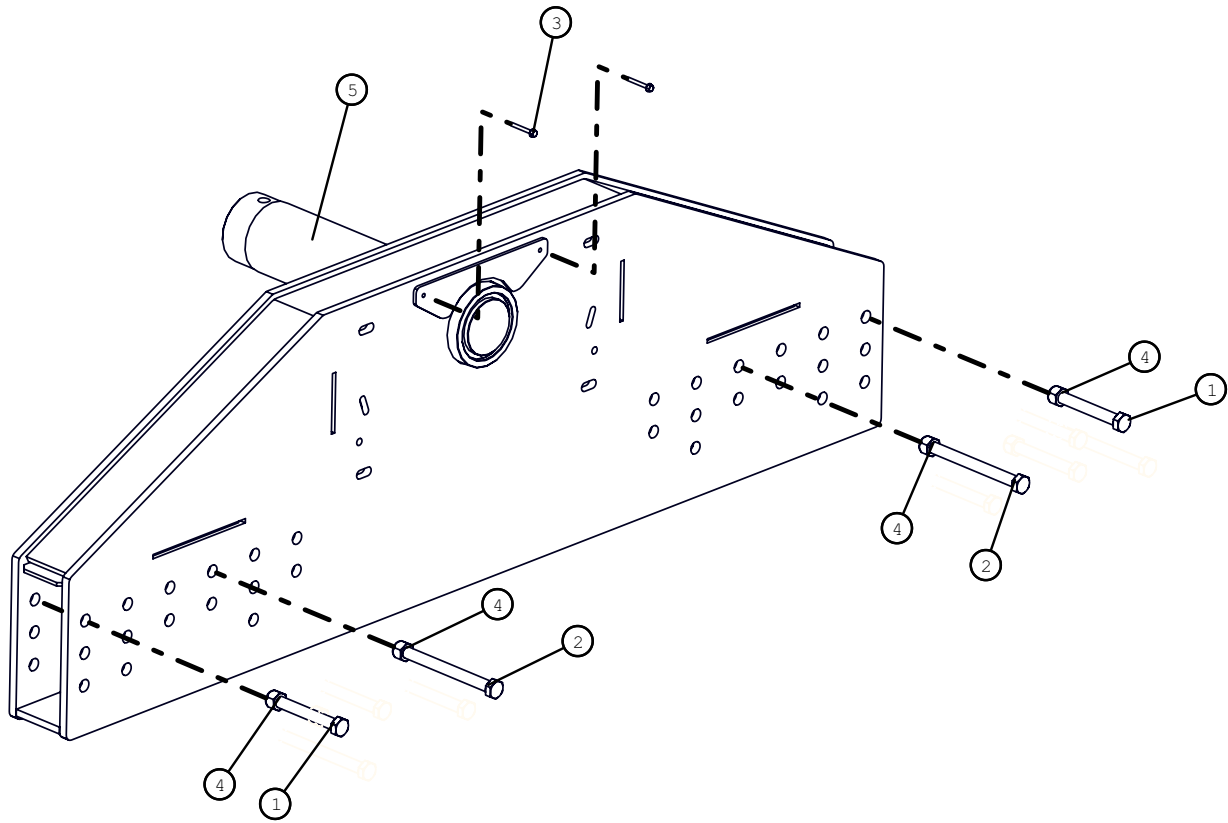
DRIVE WHEEL



DRIVE WHEEL COMPONENTS				
REF.	PART NO.	QTY.	PART NAME	NOTES
1	MC-143131	4	32 X 21 SINGLE PIECE WHEEL	
2	MC-143921	4	VALVE STEM	
ASM	LA-265961	2	SET, WHEEL CLAMPING RING ASSEMBLY	1 SET PER SIDE
3	LP-260112	10	RING, WHEEL CLAMPING	5 PER SET
STEER WHEEL COMPONENTS				
NS	JD PART NO AXE10349		4WD REAR WHEEL	JOHN DEERE SUPPLIED PART
NS	JD PART NO AT25226		REAR WHEEL VALVE STEM	JOHN DEERE SUPPLIED PART
NS	JD Part NO AXE39073		2WD REAR WHEEL	JOHN DEERE SUPPLIED PART

Model 2965H Hillco Leveling System
 For Serial Numbers 2965H-15001 thru 2965H-15999

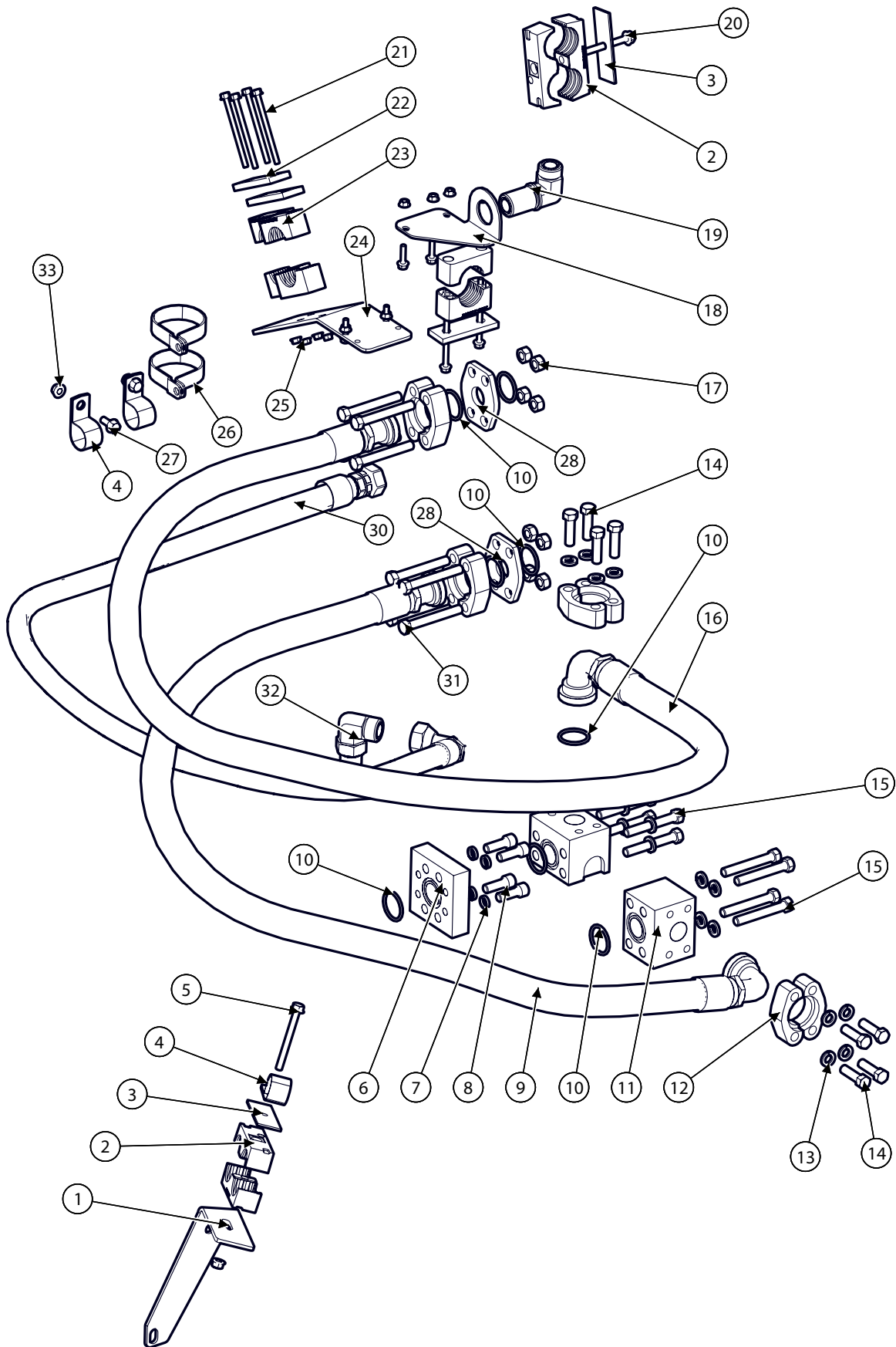
DROP AXLE



Drop Axle			
BOM ID	Part No.	Qty	Description
1	121.020.160	8	BOLT,HX,CL10.9 M20X160
2	121.020.210	4	BOLT,HX,CL10.9 M20X210
3	122.006.050	2	BOLT,HX,FL,CL10.9 M6X50
4	126.02	12	NUT,HX,STV,CL10 M20
5	1228811	1	DROP AXLE
NS	142.003.032	1	COTTER PIN, 3/16 X 2"

Model 2965H Hillco Leveling System
For Serial Numbers 2965H-15001 thru 2965H-15999

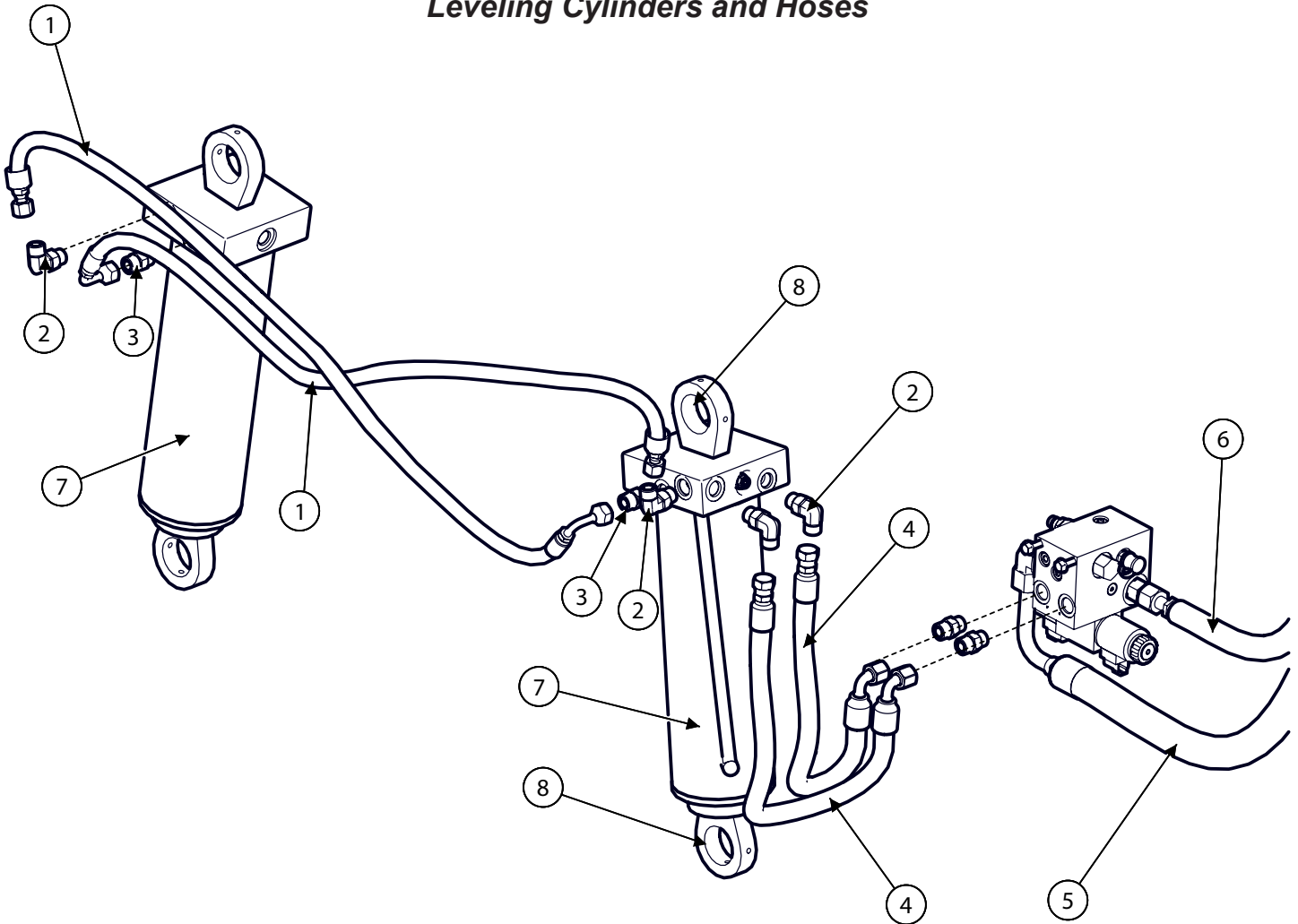
Hydro Hoses & Case Drain



Model 2965H Hillco Leveling System
For Serial Numbers 2965H-15001 thru 2965H-15999

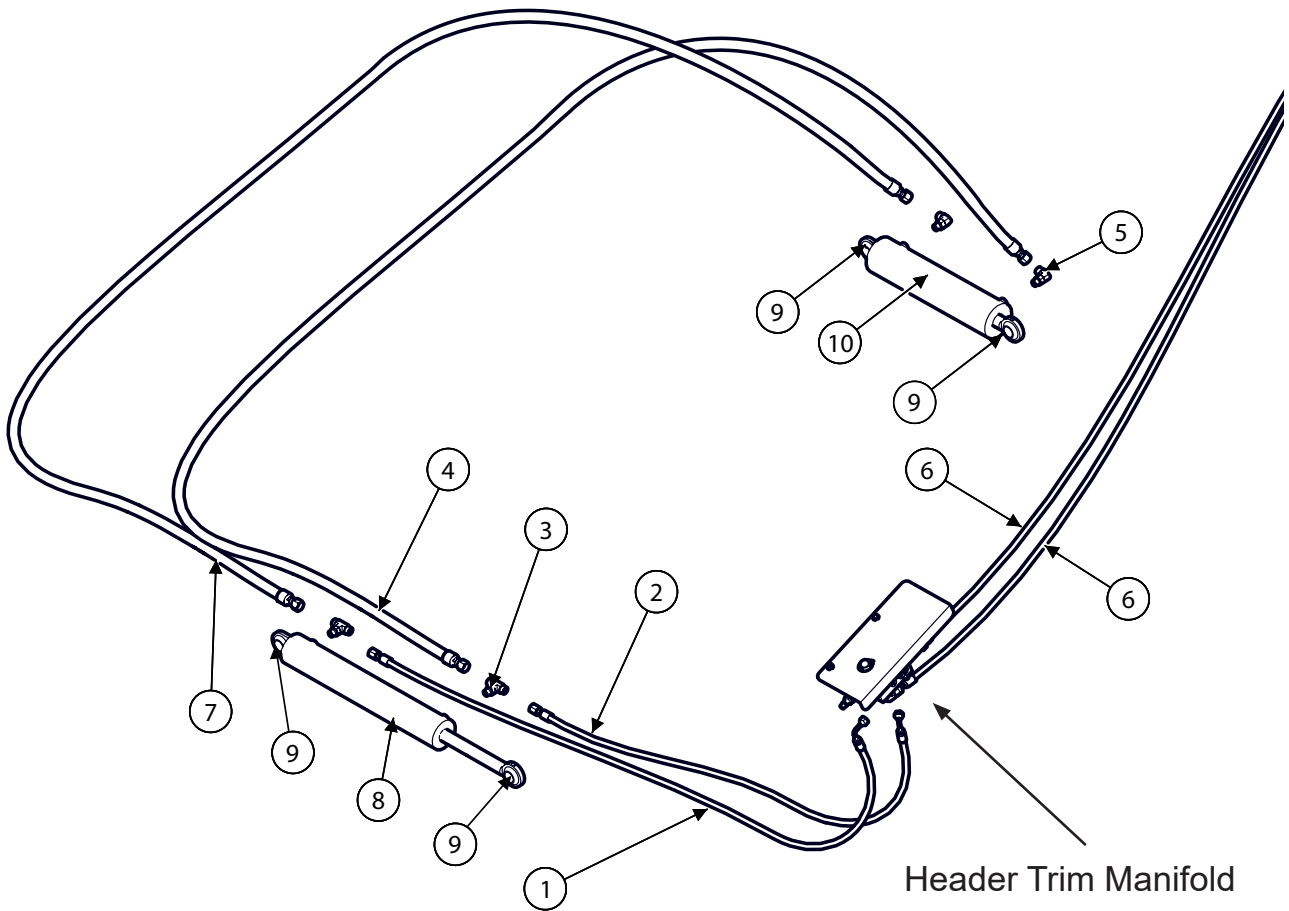
Hydro Hoses and Case Drain			
BOM ID	Part No.	Qty	Description
1	1323071	1	CLAMP MOUNT, TRANSMISSION
2	137521	2	CLAMP, TANDEM, 1-1/2", PAIR
3	137531	2	COVER PLATE
4	143601	3	CLAMP, HOSE 1-1/8"
5	122.008.080	1	BOLT,HX,FL,CL10.9 M8X80
6	1143371	1	CODE 62 90° ROTATIONAL ADAPTER
7	135.007	4	WASHER,LCK,HIGH-COLLAR 7/16
8	196.007.020	4	SCREW,SHC 7/16-14X1-1/4
9	1323171	1	100R15AR-16 X 72";
10	147551	8	O-RING, CODE 62, 1"
11	1261081	2	BLOCK, CODE 62 90°
12	147601	8	HALF, 1"
13	139.007	16	WASHER,LCK,HVY-SPLIT 7/16
14	102.007.024	8	BOLT,HX,GR8 7/16-14X1-1/2
15	102.007.048	8	BOLT,HX,GR8 7/16-14X3
16	1137881	1	100R15AR-16 X 78";
17	104.007	8	NUT,HX,GR8 7/16-14
18	1323191	1	BULKHEAD MOUNT, CASE DRAIN
19	1070.12.12	1	BULKHEAD W/NUT, -12 X -12
20	122.008.070	1	BOLT,HX,FL,CL10.9 M8X70
21	122.006.090	6	BOLT,HX,FL,CL10.9 M6X90
22	148261	3	STANDARD COVER PLATE
23	148251	3	STD. CLAMP
24	1323112	1	CLAMP MOUNT, CARRIAGE
25	123.006	10	NUT,HX,FL,CL10 M6
26	101343	2	CLAMP, HOSE,
27	122.008.020	2	BOLT,HX,FL,CL10.9 M8X20
28	1272242	2	CODE 62 1" UNION
30	1323181	1	100R17AR-12 X 82";
31	102.007.052	8	BOLT,HX,GR8 7/16-14X3-1/4
32	1003.12.12	1	HA,90°
33	123.008	4	NUT,HX,FL,CL10 M8
34	122.006.025	4	BOLT,HX,FL,CL10.9 M6X25

Leveling Cylinders and Hoses



Leveling Cylinders and Hoses			
BOM ID	Part No.	Qty	Description
1	1293431	2	CONNECTS LEFT AND RIGHT LEVELING CYLINDERS, 100R17AR-06X47",
2	1003.08.08	4	-8MORBx -8MORFS
3	1001.08.08	2	HA,STR
4	1321771	2	CONNECTS MANIFOLD PORT "A" TO "EXT", CONNECTS MANIFOLD PORT "B" TO "RET", 100R17-08X28-1/2"
5	1322651	1	RETURN LINE; CONNECT MANIFOLD T PORT TO FILTER INLET, 100R17AR-12 X 195";
6	1322661	1	PRESSURE LINE; CONNECTS PUMP TO "P" PORT OF MANIFOLD, 100R17AR-10 X 176";
7	151002	2	CYLINDER, CB VALVE,
8	MC-150881	4	1 3/8" BEARING, SEALED SPHERICAL
NS	HC-135221	-	SEAL KIT, LEVELING CYLINDER
NS	HC-139161	2	COUNTER BALANCE VALVE

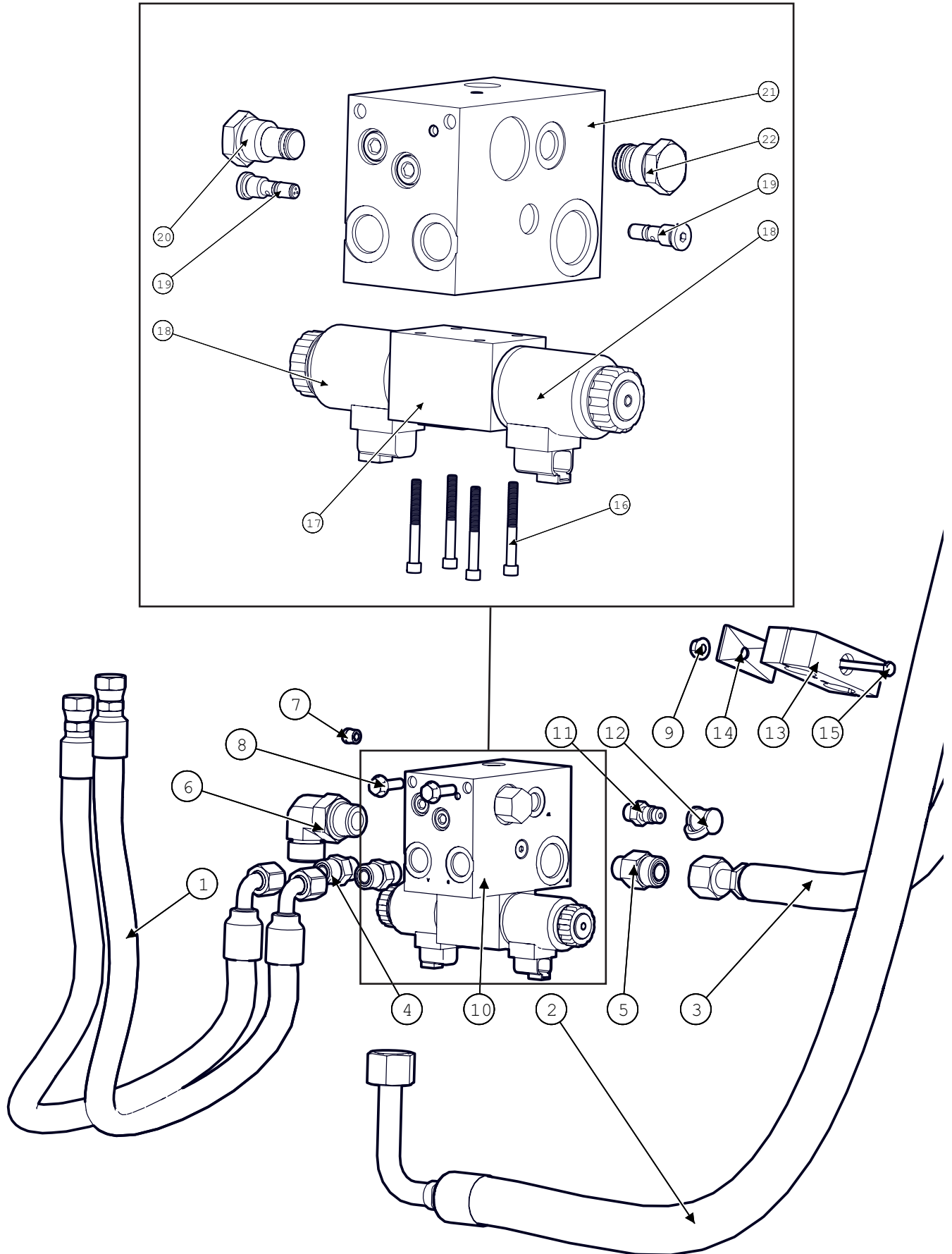
Master & Slave Cylinder Components



Master & Slave Cylinder Components			
BOM ID	Part No.	Qty	Description
1	1322741	1	CONNECTS "B" PORT OF TRIM MANIFOLD TO BASE PORT OF TILT CYLINDER, 100R17AR-04 X 94"
2	1322731	1	100R17AR-04 X 80";
3	1009.06	2	STR THD, BRANCH,
4	1323221	1	CONNECT SLAVE CYLINDER ROD PORT TO MASTER CYLINDER ROD PORT, 100R17AR-06 X 171"
5	1003.06.06	2	-6MORB X -6MORFS
6	1322781	2	CONNECTS P&T TRIM MANIFOLD PORTS TO 1322791 HOSES, 100R17AR-04 X 72"
7	1323211	1	CONNECTS SLAVE CYLINDER BASE PORT TO MASTER CYLINDER BASE PORT, 100R17AR-06 X 143"
8	147491	1	CYLINDER,SLAVE,21"CPC
NS	HC-141281	-	SEAL KIT, SLAVE CYLINDER
9	MC-140321	4	1" BEARING, SEALED SPHERICAL
10	140342	1	CYLINDER, MASTER
NS	HC-134201	-	SEAL KIT, MASTER CYLINDER

Model 2965H Hillco Leveling System
For Serial Numbers 2965H-15001 thru 2965H-15999

Leveling Manifold

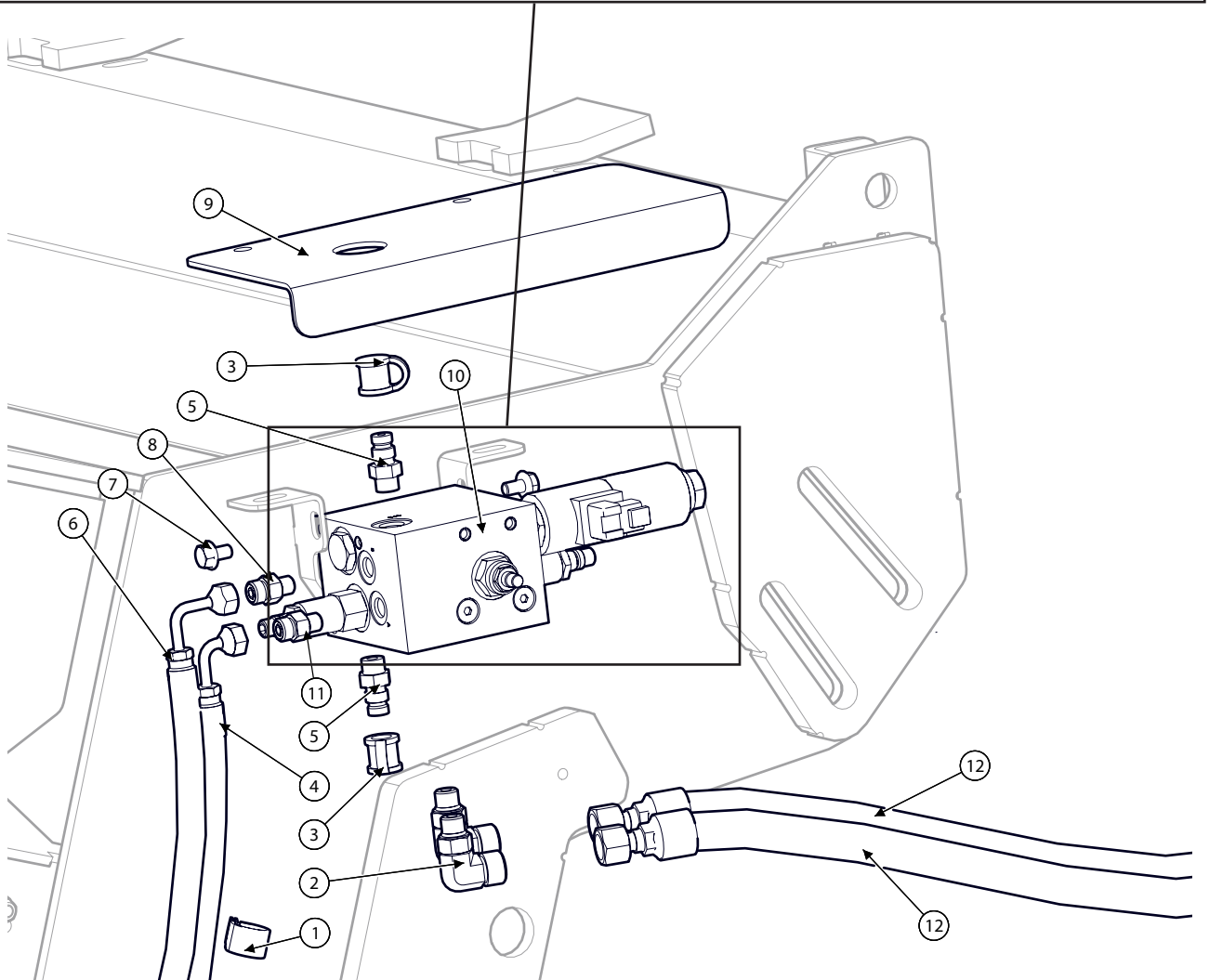
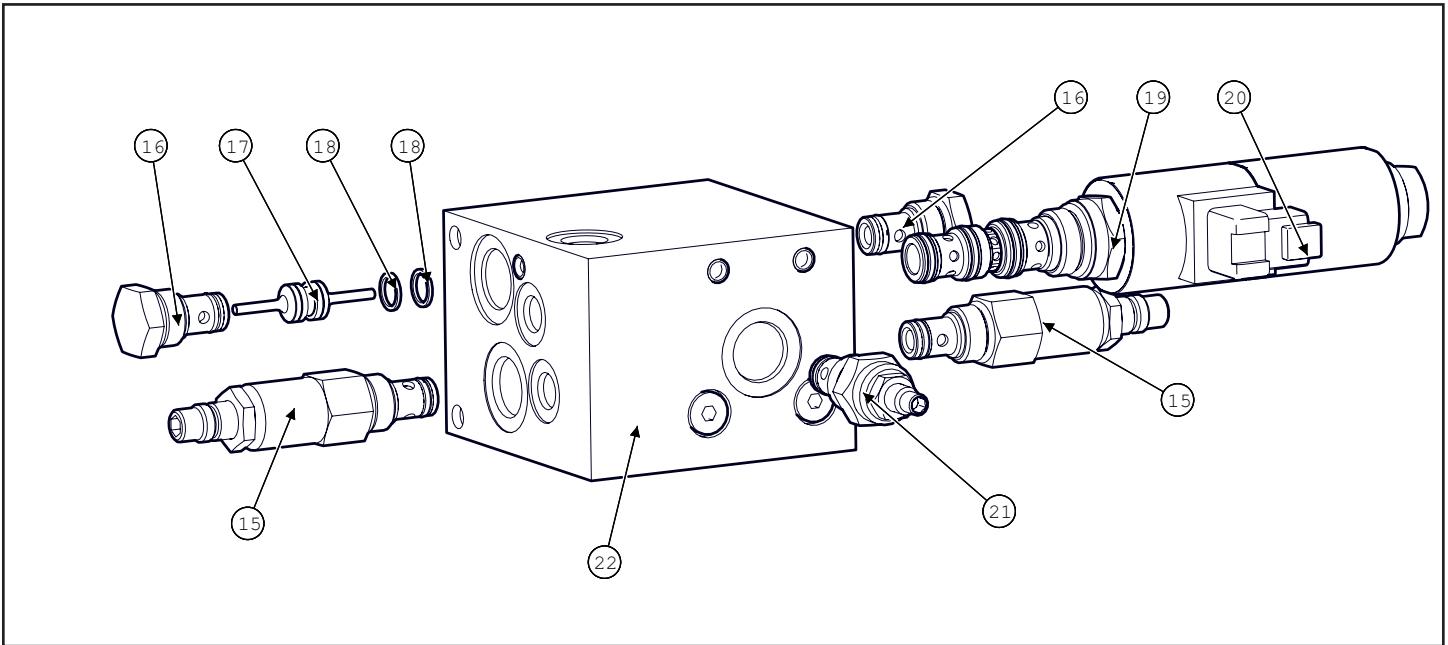


Model 2965H Hillco Leveling System
For Serial Numbers 2965H-15001 thru 2965H-15999

Leveling Manifold			
BOM ID	Part No.	Qty	Description
1	1321771	2	100R17-08X28-1/2"
2	1322651	1	100R17AR-12 X 195";
3	1322661	1	100R17AR-10 X 176";
4	1001.08.08	2	HA,STR
5	1001.12.10	1	-12MORB X -10MORFS
6	1003.12.12	1	HA,90°
7	1019.04	1	HA,PLUG,SKT,HD
8	111.005.016	2	BOLT,HX,FL,GR5 5/16-18X1"
9	123.008	1	NUT,HX,FL,CL10 M8
10	1309641	1	MANIFOLD, CUSTOM,
11	143991	1	COUPLER,
12	144001	1	DUST COVER
13	154201	1	BLOCK, TWIN, 1.12"
14	154771	1	COVER PLATE, FOR TWIN CLAMP, BEHRINGER
15	170.006.090	1	BOLT,HX,CL8.8 M6X90
16	196.#10.028	4	SHCS 10-24 X 1.75
17	155237	1	DIRECTIONAL VALVE,PROPORTIONAL (INCLUDES 155239)
18	155239	2	SOLENOID COIL,D03,PROP,DEUTSCH
19	155236	2	CHECK VALVE, REVERSE DIRECTION
20	155238	1	CAVITY PLUG, 2 WAY, 10 SERIES
21	155235	1	VALVE BODY, LEVELING
22	155234	1	CAVITY PLUG, 3 WAY, 10 SERIES

Model 2965H Hillco Leveling System
For Serial Numbers 2965H-15001 thru 2965H-15999

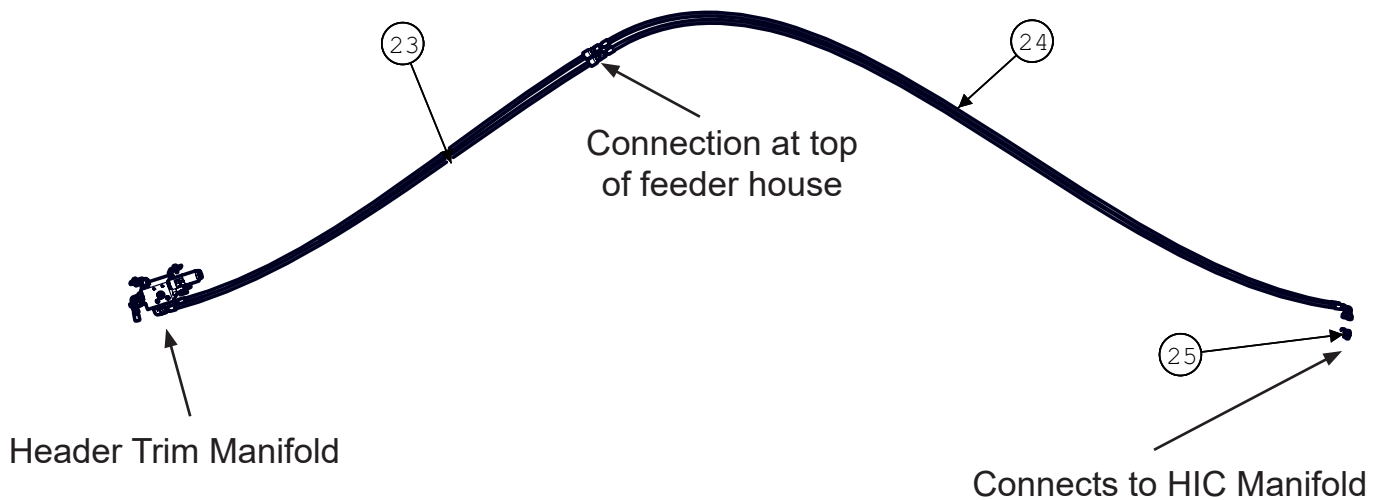
Header Trim Manifold



Model 2965H Hillco Leveling System
For Serial Numbers 2965H-15001 thru 2965H-15999

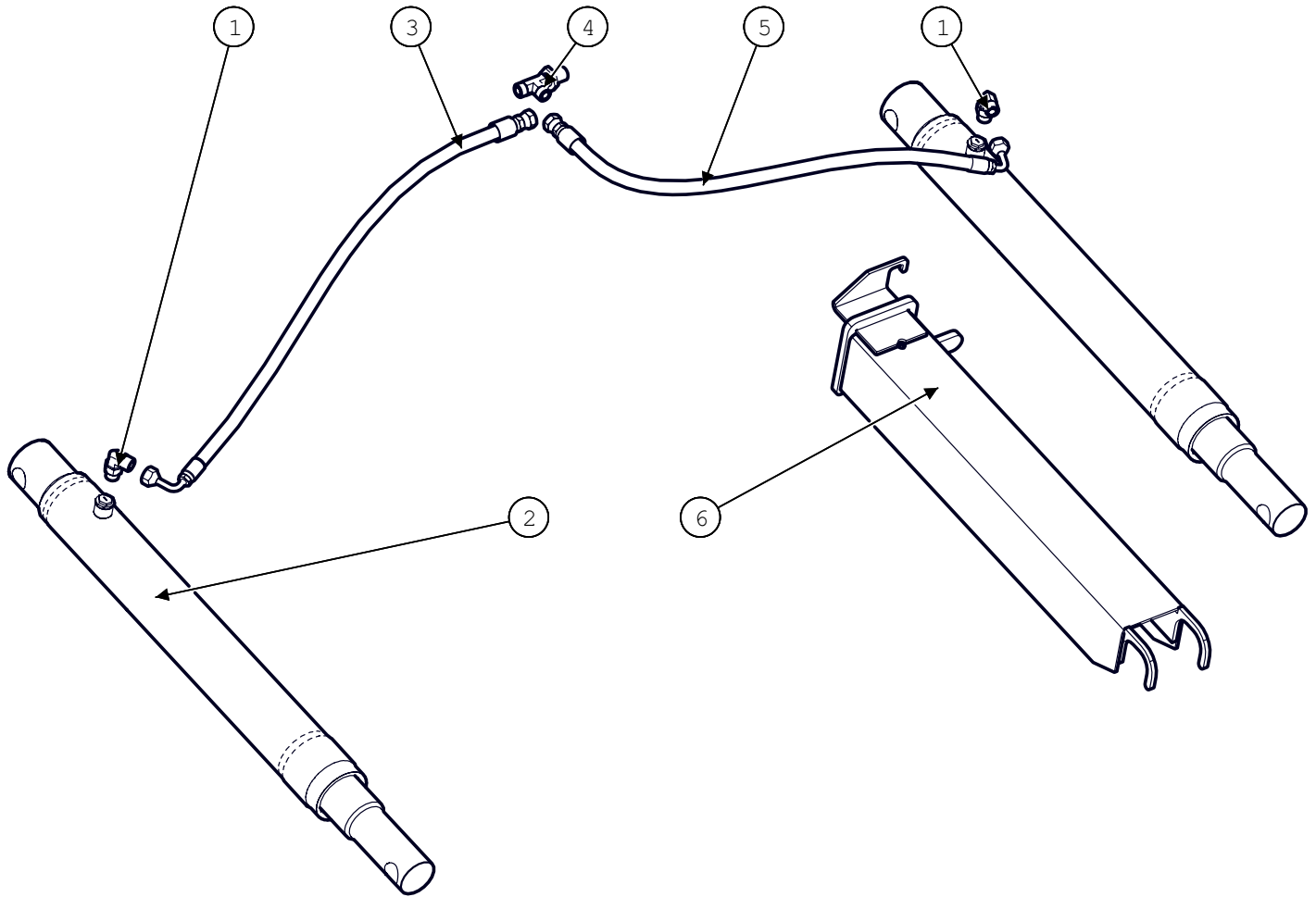
Header Trim Manifold			
BOM ID	Part No.	Qty	Description
1	135791	2	CLAMP, HOSE
2	1003.08.06	2	-8MORB X -6MORFS
3	144001	2	DUST COVER
4	1322731	1	100R17AR-04 X 80";
5	143991	2	COUPLER,
6	1322741	1	100R17AR-04 X 94"
7	111.005.008	2	BOLT,HX,FL,GR5 5/16-18X1/2
8	1001.04.04	2	HA,STR
9	1316461	1	SHIELD, TRIM SHIELD
10	1311571	1	MANIFOLD, CUSTOM, TRIM
11	1002.04.04	1	-4MORB X -4MORFS X 45°
12	1322781	2	100R17AR-04 X 72"
13	1008.06	2	SWIVEL NUT, RUN, -6ORFS
15	155243	2	CARTRIDGE, PRESSURE RELIEF,
16	155246	2	CHECK VALVE, CARTRIDGE
17	155245	1	PILOT PISTON, DOUBLE ACTING
18	155247	2	BACKUP RING
19	155249	1	CARTRIDGE VALVE, 3 POS,4 WAY (INCLUDES 155248)
20	155248	2	SOLENOID COIL, CARTRIDGE, PROP
21	155244	1	NEEDLE VALVE, ADJUSTABLE FLOW
22	155242	1	VALVE BODY, TRIM
Trim Hoses			
23	1322781	2	100R17AR-04 X 72"
24	1322791	2	100R17AR-04 X 152";
25	LC-265371	2	ADAPTER, HIC MANIFOLD, MOD.

Header Trim Hoses



Model 2965H Hillco Leveling System
 For Serial Numbers 2965H-15001 thru 2965H-15999

Header Lift

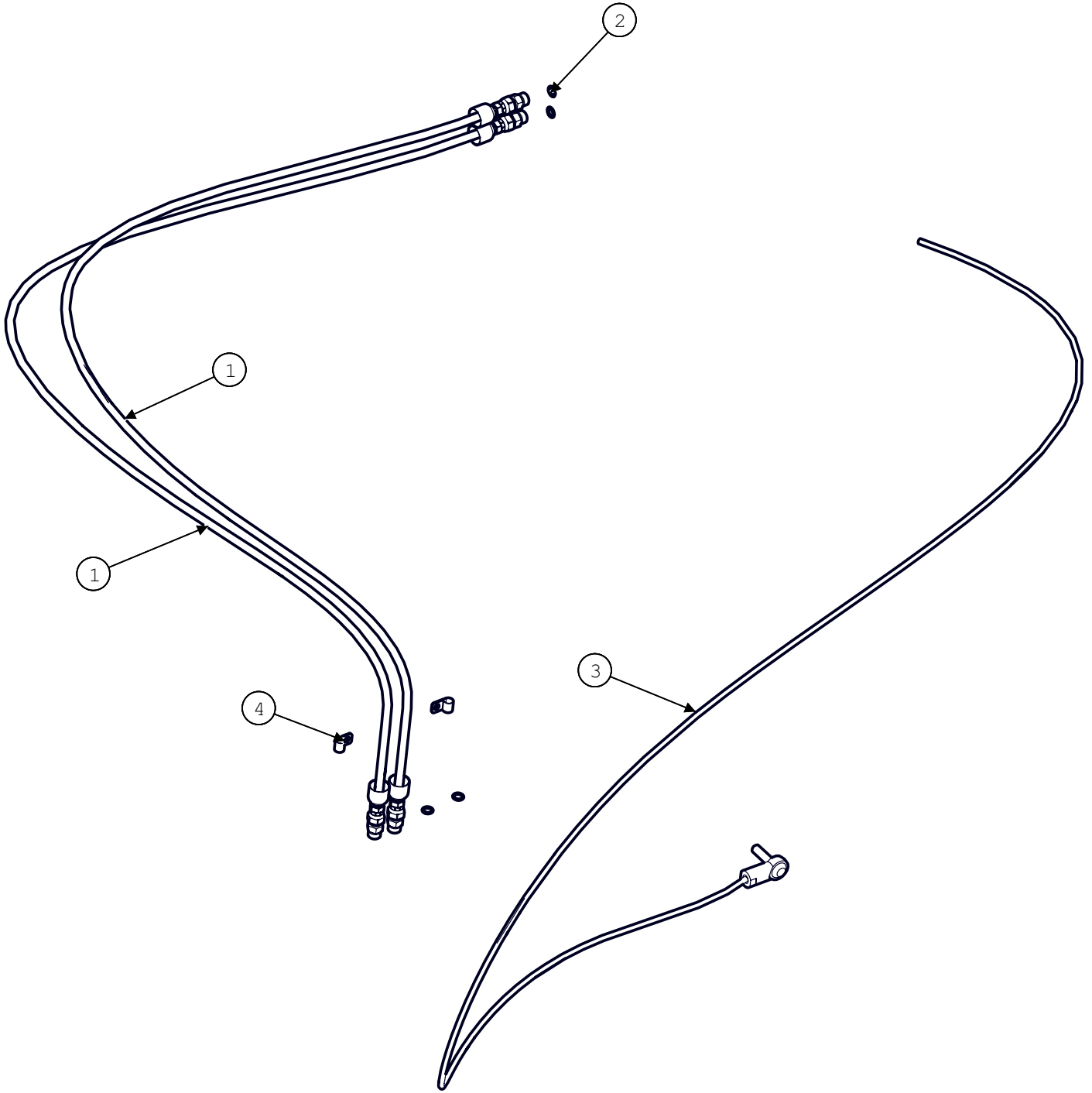


Drop Axle			
BOM ID	Part No.	Qty	Description
1	121.020.160	8	BOLT,HX,CL10.9 M20X160
2	121.020.210	4	BOLT,HX,CL10.9 M20X210
3	122.006.050	2	BOLT,HX,FL,CL10.9 M6X50
4	126.02	12	NUT,HX,STV,CL10 M20
5	1228811	1	DROP AXLE
NS	142.003.032	1	COTTER PIN, 3/16 X 2"

Note: The original header lift cylinders are replaced with cylinders that provide a greater range of motion. The replacement

Model 2965H Hillco Leveling System
 For Serial Numbers 2965H-15001 thru 2965H-15999

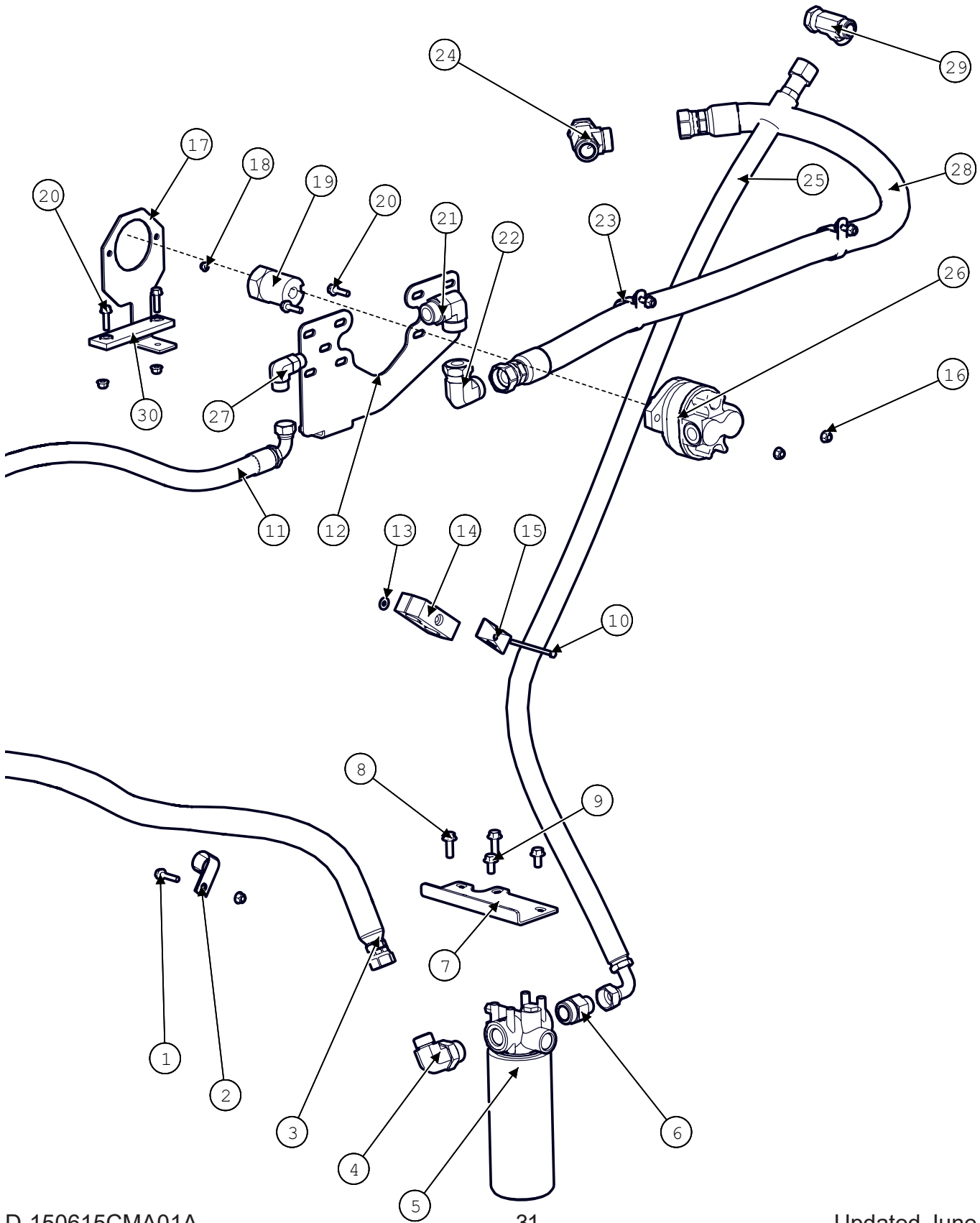
Brake Line Extensions & Shift Cable Extension



Brake and Shift Cable Extensions			
BOM ID	Part No.	Qty	Description
1	1323201	2	TITFLEX-5 X 66";
2	133131	4	O-RING, TEFLON
3	141551	1	CABLE, SHIFT
4	142101	2	LOOP, CLOSED, .375", R/C

Model 2965H Hillco Leveling System
For Serial Numbers 2965H-15001 thru 2965H-15999

Gear Pump

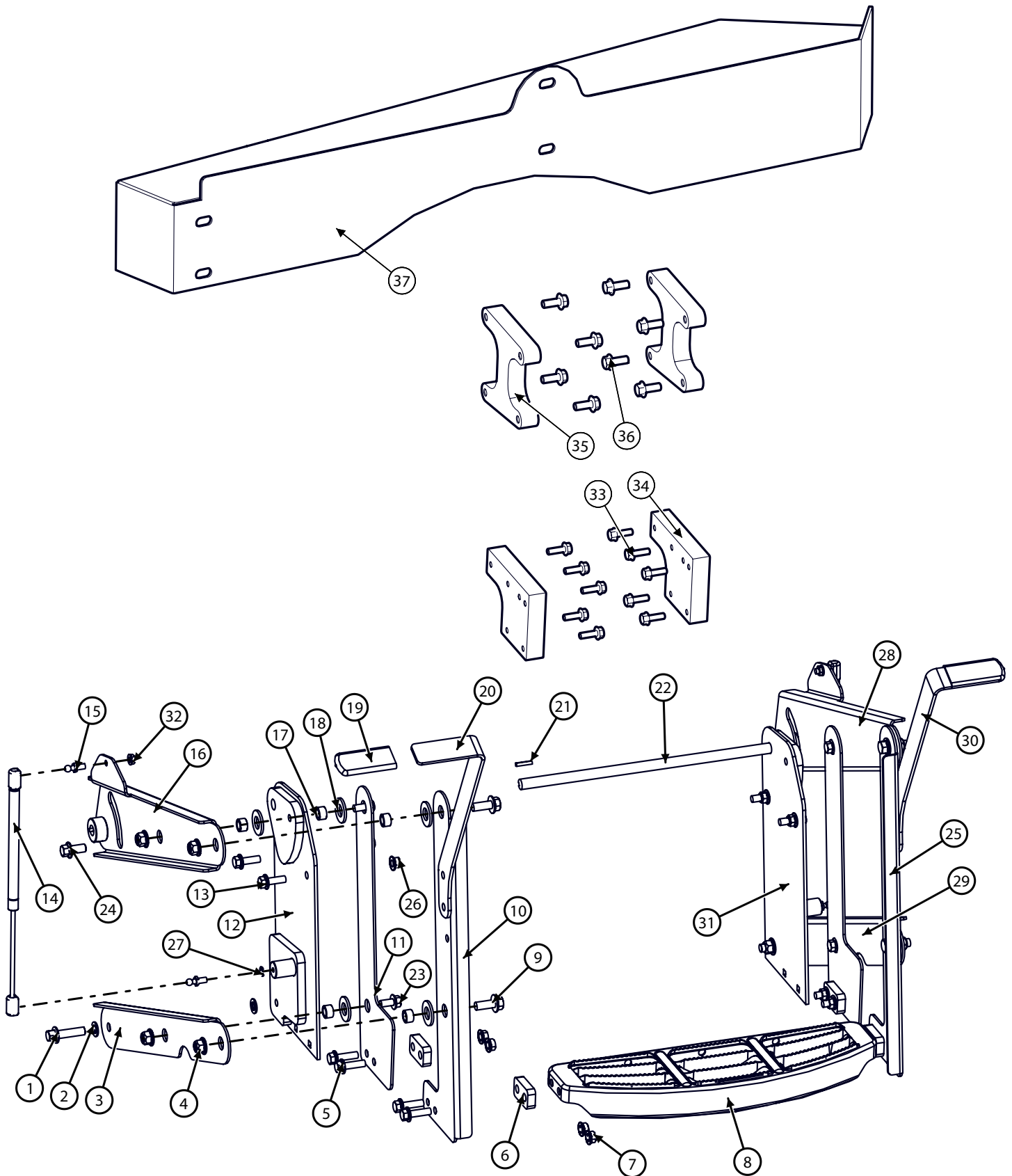


Model 2965H Hillco Leveling System
For Serial Numbers 2965H-15001 thru 2965H-15999

Gear Pump			
BOM ID	Part No.	Qty	Description
1	122.008.035	1	BOLT,HX,FL,CL10.9 M8X35
2	143601	1	CLAMP, HOSE 1-1/8"
3	1322651	1	RETURN LINE; CONNECT MANIFOLD T PORT TO FILTER INLET, 100R17AR-12 X 195";
4	1003.16.12	1	HA,90°
5	143441	1	FILTER ASM, OIL
6	1001.16.12	1	HA,STR
7	1322601	1	FILTER MOUNT
8	122.010.030	2	BOLT,HX,FL,CL10.9 M10X30
9	122.010.020	2	BOLT,HX,FL,CL10.9 M10X20
10	170.006.090	1	BOLT,HX,CL8.8 M6X90
11	1322661	1	PRESSURE LINE; CONNECTS PUMP TO "P" PORT OF MANIFOLD, 100R17AR-10 X 176";
12	1262692	1	SUPPORT, SIDE PANEL
13	105.004	1	WASHER,FLT 1/4
14	154201	1	BLOCK, TWIN, 1.12"
15	154771	1	COVER PLATE, FOR TWIN CLAMP, BEHRINGER
16	128.008	7	NUT,HX,FL,STV,CL10 M8
17	1314192	1	TORQUE ARM
18	192.006	1	NUT, HX, FL, STV, GR8,
19	1295441	1	COUPLER, GEAR PUMP
20	122.008.030	6	BOLT,HX,FL,CL10.9 M8X30
21	1003.16.16	1	HA,90°
22	1006.16.16	1	HA,90°
23	135781	2	CLAMP, HOSE 2 R/C W/3/8 HOLE
24	1008.16	1	HA,TEE,SWV,NUT,RUN
25	1322641	1	RETURN LINE; FILTER OUTLET TO RESERVIOR, 100R17AR-12x64",
26	148181	1	HYDRAULIC PUMP ASSY,
27	1003.10.10	1	HA,90°
28	1276601	1	SUCTIONLINE; CONNECTS PUMP SUCTION PORT TO RESERVOIR, 100R17AR-16 X 72"
29	1008.12	1	TEE
30	155177	1	ISOLATOR, PUMP DRIVE

Model 2965H Hillco Leveling System
For Serial Numbers 2965H-15001 thru 2965H-15999

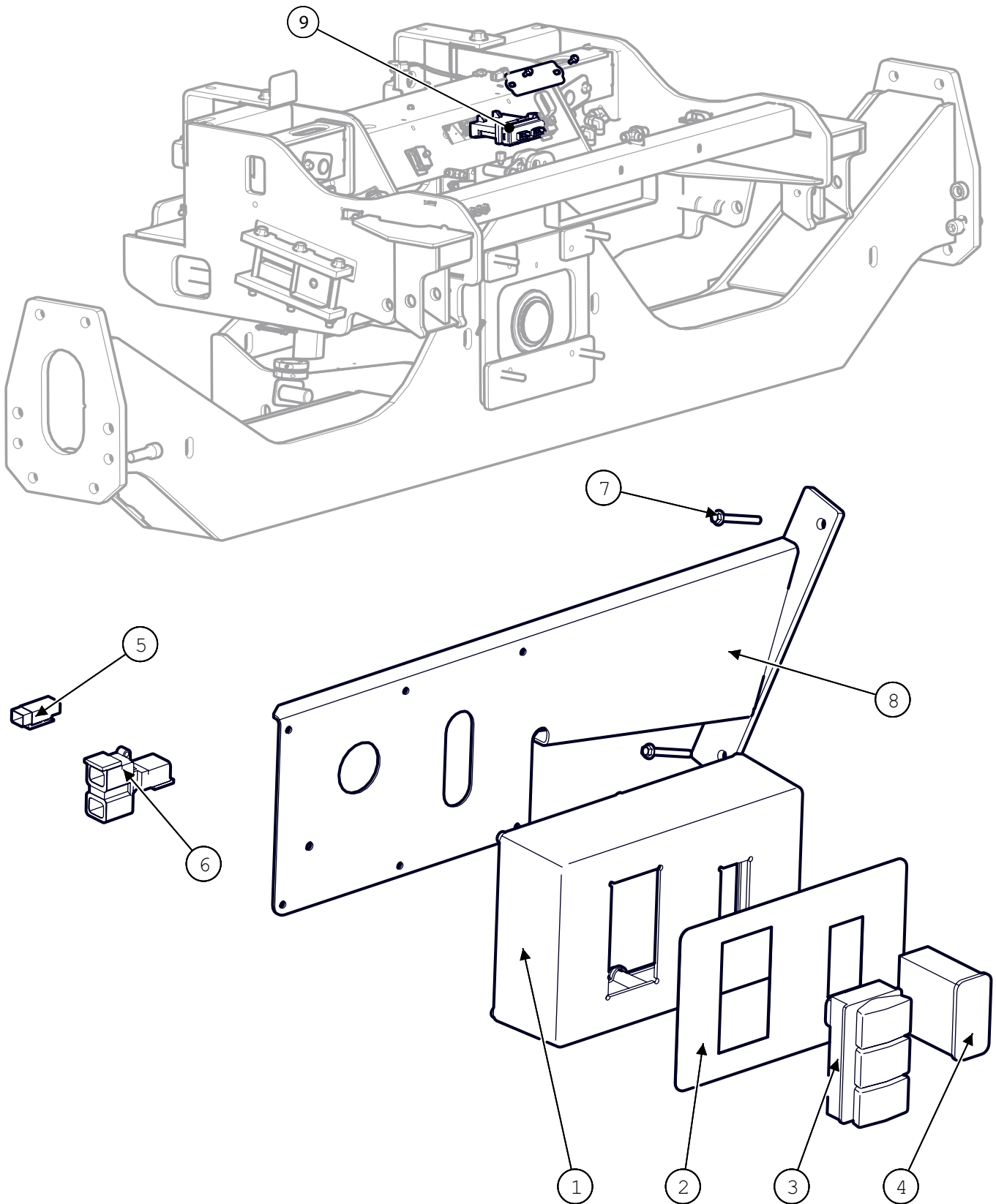
RETRACTABLE LADDER



Model 2965H Hillco Leveling System
For Serial Numbers 2965H-15001 thru 2965H-15999

Ladder and Cab Platform			
BOM ID	Part No.	Qty	Description
1-32	1300211	1	ASSEMBLY, MOVING STEP (HILLSIDE)
1	122.012.045	2	FLHC-10.9M12X1.75X45
2	162.014.008	4	MACHINE BUSHING 14GA NR 1/2ID
3	1300091	1	LM LINK, LWR RIGHT PARALLEL
4	128.012	10	FLHN-10.9M12X1.75 STVR
5	122.010.035	8	SCREW, FLANGED HEX CAP, 10.9
6	1300191	4	LM SPACER, STEP
7	123.01	12	FLHN-10.9 M10 X 1.50
8	152601	2	STEP, PLATFORM, STEP (HXE19816)
9	122.012.030	4	FLHC-10.9 M12X1.75X30
10	1300162	1	LM PLT, VERTICAL OUTER RIGHT
11	1300111	2	LM LINK, VERTICAL INNER
12	1300061	1	LM WLD, RHT LADDER MNT
13	122.010.030	4	FLHC 10.9 M10 X 1.5 X 30
14	155327	2	STRUT, LIFT, 80LB, 15OPC, 6" STROKE
15	134931	4	LIFT SUPPORT BRACKETS (PAIR)
16	1300121	1	LM WLD, TOP RIGHT LINK
17	1299181	10	LM BUSHING, LADDER PIVOT
18	153.010.012	10	MACHINE BUSHING 10GA WR 3/4ID
19	151921	2	GRIP, JD#W25634
20	1306351	1	LM PLT, HANDLE, LEFT
NS	1316512	1	LM PLT, HANDLE, LEFT - SHORT
21	10049.03.00016	2	KEY, STR, 3/16 X 3/16 X 1
22	1298191	1	LM RND, ROCK SHAFT
23	122.010.020	4	FLHC-10.9M10X1.75X20
24	122.012.025	2	FLHC-10.9M12X1.75X25
25	1300172	1	LM PLT, VERTICAL OUTER LEFT
26	128.01	4	FLHN-10.9M10X1.5 STVR
27	136.005	2	LOCK WASHER 5/16"
28	1300141	1	LM WLD, TOP LEFT LINK
29	1300101	1	LM LINK, LWR LEFT PARALLEL
30	1300182	1	LM PLT, LADDER HANDLE RIGHT
NS	1316502	1	LM PLT, HANDLE, RIGHT - SHORT
31	1300051	1	LM WLD, LEFT LADDER MNT
32	119.005	2	FLHN 5/16-18
33	122.008.025	10	BOLT,HX,FL,CL10.9 M8X25
34	1322342	2	SPACER, LADDER MOUNT, LOWER
35	1322331	2	PLATE, LADDER MOUNT
36	122.010.025	8	BOLT,HX,FL,CL10.9 M10X25
37	LA-240161	1	LADDER WEDGE

Controller & Switches



Model 2965H Hillco Leveling System
For Serial Numbers 2965H-15001 thru 2965H-15999

Switches, Controller & Harnesses			
BOM ID	Part No.	Qty	Description
1	1322611	1	BOX, SWITCHES
2	155329	1	DECAL, LEVELING SYSTEM SWITCHBOX
3	155333	1	SWITCH MODULE, CAN BUS, EATON E333MW4WBE101
4	155334	1	DISPLAY, CAN BUS, EATON E00GS0001
5	146541	1	PLUG,GRAY,120-OHM
6	146531	1	Y-CONNECTOR, BLACK
7	220.006.035	2	SCREW,HX,FL,S-T M6X35
8	1322701	1	MOUNT, CONTROL PANEL
9	1296211	1	CONTROLER

Wiring Harnesses			
NS	1295181	1	SENSOR PACKAGE
NS	1295342	1	SENSOR
NS	1320731	1	HEADER TRIM
NS	1322751	1	CAB TO CONTROLLER
NS	1322761	1	SWITCH BOX
NS	1322771	1	TRIM SIGNAL EXTENSION

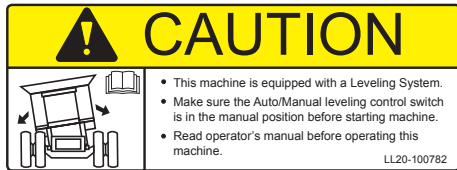
Decals and Literature



1) LL-133741



2) LL-151041



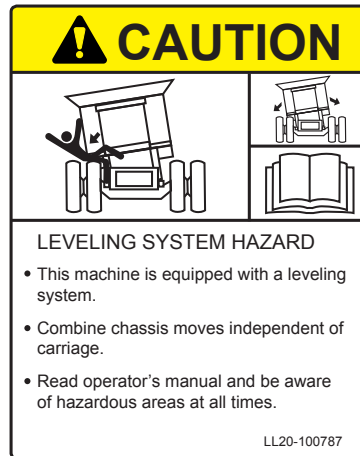
3) LL20-100782



5) LL20-100784



4) LL20-100783



7) LL20-100787



6) LL20-100786



8) LL20-100788



9) LL-143621

Model 2965H Hillco Leveling System
For Serial Numbers 2965H-15001 thru 2965H-15999

DECALS AND LITERATURE				
REF.	PART NO.	QTY.	PART NAME	DESCRIPTION
1	LL-133741	1	LABEL, GREASE 50 HRS	OC BULKHEAD
1	LL-133741	2	LABEL, GREASE 50 HRS	RIGHT & LEFT MAIN LEV CYL BOTTOM
1	LL-133741	1	LABEL, GREASE 50 HRS	MASTER CYLINDER ROD
2	LL-151041	2	DECAL, HILLSIDE LEVELING SYSTEM	SIDE OF COMBINE
3	LL20-100782	1	CAUTION LEVELING SYSTEM CAB	WINDOW IN CAB
4	LL20-100783	2	DANGER, CRUSHING HAZARD	RIGHT & LEFT UNDERCARRIAGE
4	LL20-100783	2	DANGER, CRUSHING HAZARD	SIDES OF DROP AXLE ASSEMBLY
5	LL20-100784	2	DECAL, DANGER PINCH POINT	RIGHT & LEFT UPPER TRANS FACE PLT
6	LL20-100786	1	WARNING ELECTRICAL CRUSHING HAZARD	FRONT OF ELECTRICAL CONTROL BOX
7	LL20-100787	1	CAUTION - LEVELING SYSTEM HAZARD	ON LADDER PLATFORM
8	LL20-100788	1	DANGER - HYDRAULIC HAZARD	ON SIDE OF COMBINE ABOVE THE HYDRAULIC MANIFOLD
8	LL20-100788	2	DANGER - HYDRAULIC HAZARD	FOR EACH LEVELING CYLINDER
9	LL-143621	2	DANGER, AVOID CRUSHING INJURY	IN AREA NEAR SAFETY STOP STORAGE LOCATION
NS	LL-147651	1	LABEL, FEMA MEMBER TAG	NEAR SERIAL NUMBER TAG
NS	LA-255961	1	TAG, SERIAL NUMBER	
NS	LL-289641	1	CM LABEL, MECHANICAL CYLINDER STOP	
NS	D-150615CMA01A	1	MANUAL, PARTS	
NS	D-141203CMA01A	1	MANUAL, OPERATORS	SN 15001-15999

Model 2965H Hillco Leveling System
For Serial Numbers 2965H-15001 thru 2965H-15999

Notes

Hillco Technologies, Inc.
107 1st Avenue
Nezperce, Idaho 83543

Phone	800-937-2461
	208-937-2461
Fax	208-937-2280

www.hillcotechnologies.com
email: support@hillcotechnologies.com