

Model CH9010 Hillco Leveling System
For Serial Numbers CH9010-14001 thru CH9010-14999



Model CH9010 Hillside Leveling System Parts Manual

SN CH9010-14001 thru CH9010-14999
For Case-IH 7230, 8230, and 9230
Combines

D-120623CMA0C



CH9010 Hillside Leveling System

For Case-IH 7230, 8230, and 9230 Combines

Table of Contents

General Information	3
Serial Number Location	3
Text and Illustrations	3
Abbreviations	3
Right and left Identification	3
Part Orders	3
TRANSITION	
Transition Throat	5
Paddle Beater Drive	6
Steel Paddle Beater	8
Rubber Paddle Beater	9
Slave Cylinder	10
Transition Header Adapter	11
DRIVE WHEEL	14
CARRIAGE	13
Carriage Fasteners	16
DROP AXLE	18
LADDER	20
Ladder Wedge	22
ELECTRICAL	23
Leveling Box	23
Monitor Display	25
Remote Switches	26
Electrical Connectors & Cables	27
HYDRAULICS COMPONENTS	28
Leveling Manifold	30
Hydraulic Hoses	31
Hydraulic Adapters	32
MISCELLANEOUS	33

Contact Information

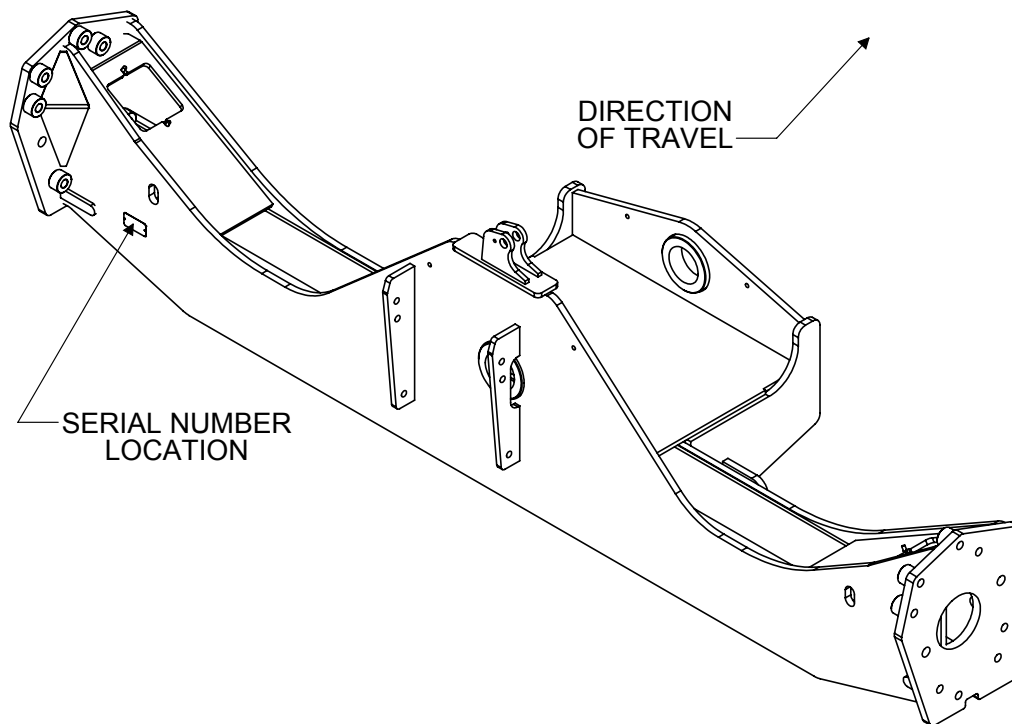
Hillco Technologies, Inc.
107 1st Avenue
Nezperce, Idaho 83543

Phone	800-937-2461
	208-937-2461
Fax	208-937-2280

www.hillcotechnologies.com
email: support@hillcotechnologies.com

GENERAL INFORMATION

SERIAL NUMBER LOCATION



TEXT AND ILLUSTRATIONS

The arrangement of this parts catalog is for easy identification of parts. All parts are illustrated in exploded views in proper relation to each other. Some diagrams refer to other pages for further information. Reference numbers used in the illustrations refer to line numbers in the part lists. The part lists appear to the right or below all diagrams and correspond with those diagrams. Included in the part lists, along with the reference numbers are part numbers, part descriptions and the quantity of the part required per leveling system.

ABBREVIATIONS

SN "Serial Number" refers to the serial number given to each leveling system (by Hillco Technologies), as well as the serial number given to the combine (by the specific combine manufacturer) the leveling system is installed. See above for the leveling system's serial number location. This abbreviation is used interchangeably in both instances. Each Model CH9010 Leveling System uses the following serial number format: CH9010-XXXX (sequential numbers).

ASM "Assembly" refers to a whole grouping of parts (shown in the diagram corresponding with the page where "ASM" is shown unless otherwise noted). Some assemblies have parts that are sold separately, however some must be purchased as a single unit. Hillco Product Specialists will be able to assist you with any questions.

NS "Not Shown" refers to a part that is not depicted in the illustration.

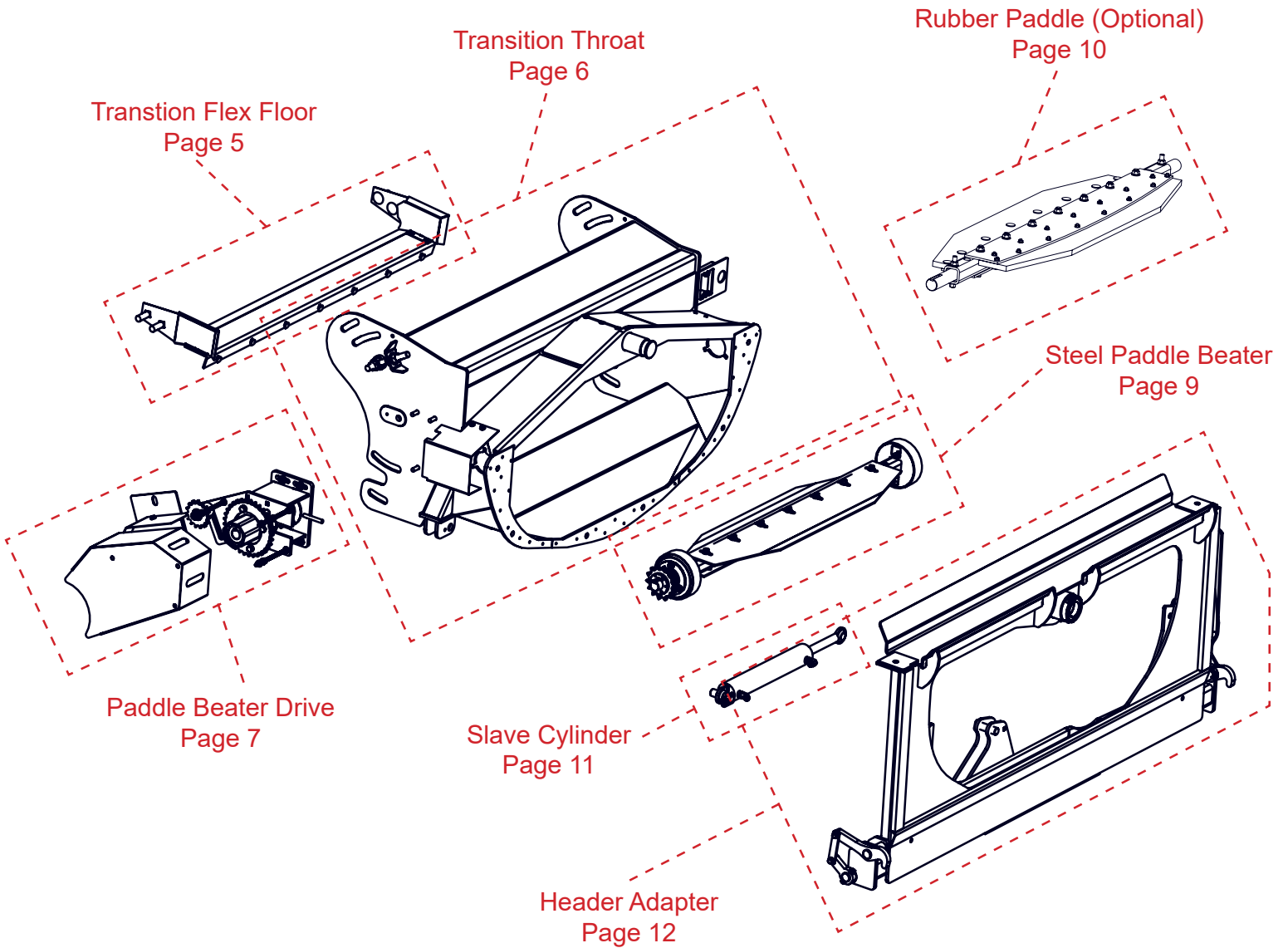
RIGHT AND LEFT IDENTIFICATION

The reference to right-hand and left-hand in this catalog is identified by the operator sitting in the operator's seat, looking toward the front of the machine (in normal forward travel).

PART ORDERS

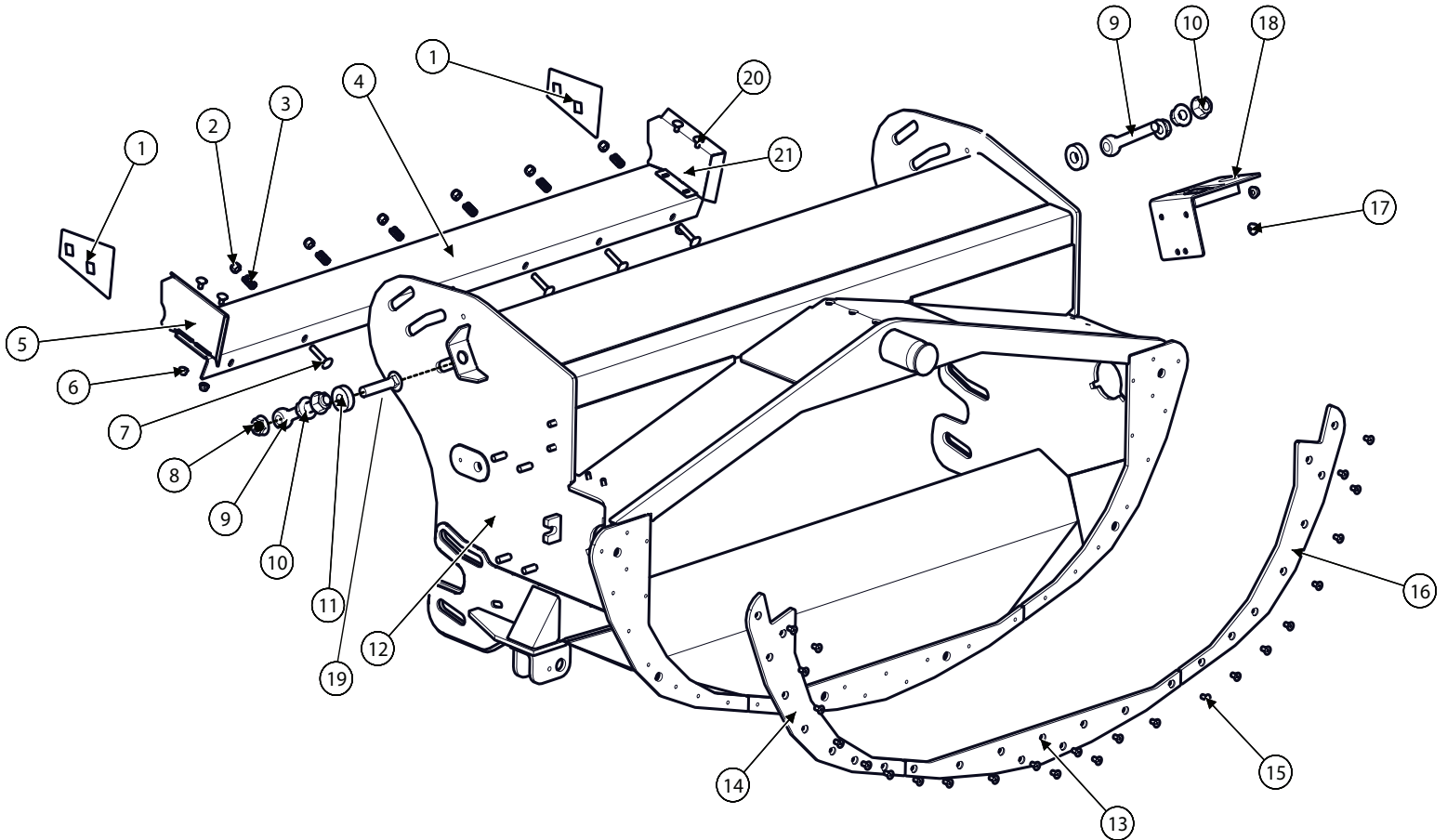
Orders must specify product model, serial number, correct part number, complete description, quantity required, method of shipment, shipping address, and billing address.

TRANSITION



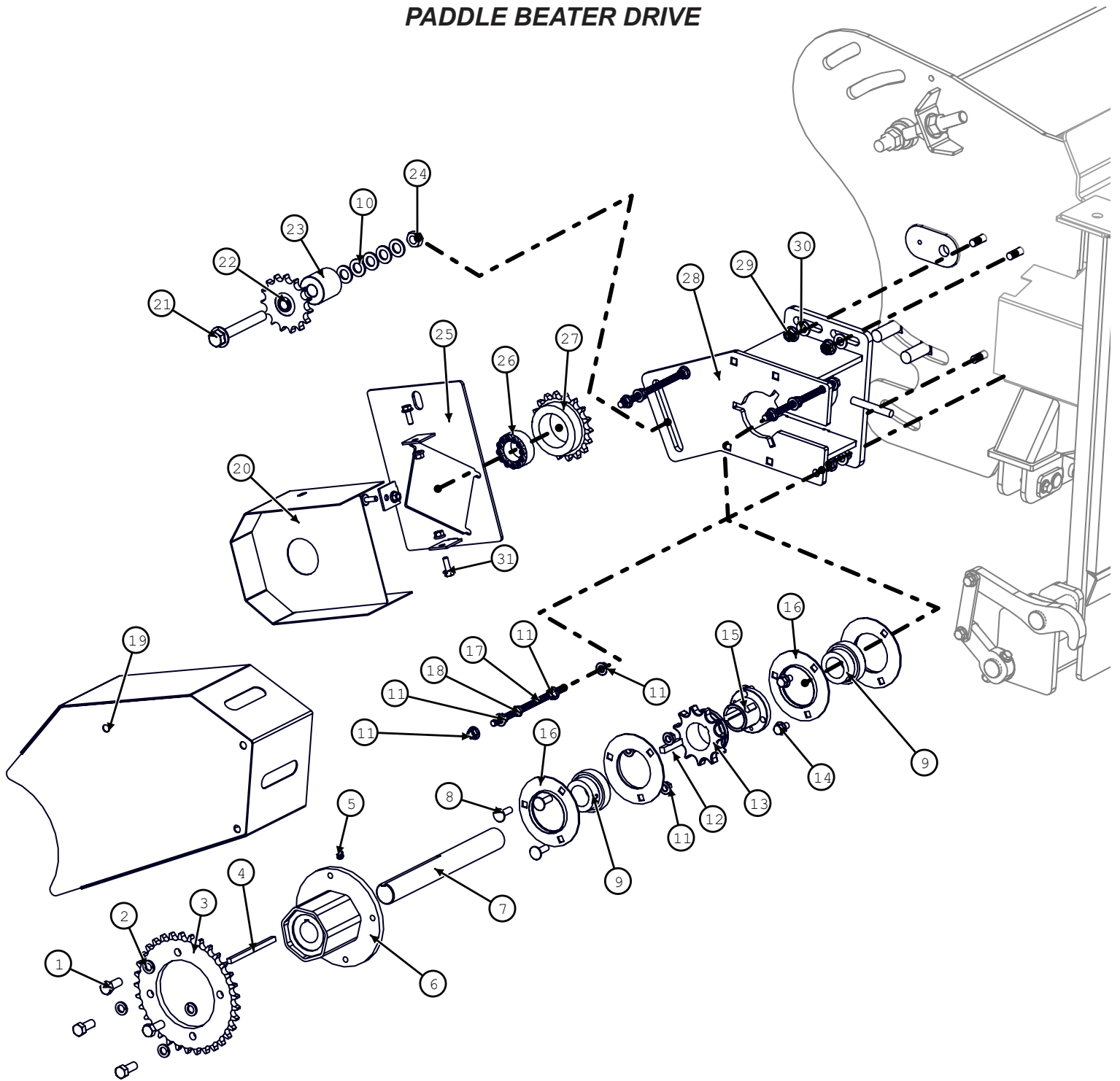
Model CH9010 Hillco Leveling System
 For Serial Numbers CH9010-14001 thru CH9010-14999

TRANSITION THROAT



Transition Throat			
BOM ID	Part No.	Qty	Description
1	1306191	2	REAR SEAL
2	191.01	7	NUT,HX,NYL,CL8 M10
3	143591	7	SPRING, COMPRESSION
4	1305431	1	FLOOR PLATE, FLEX
5	1306251	1	FLOOR SEAL, RIGHT
6	123.008	4	NUT,HX,FL,CL10 M8
7	163.010.050	7	BOLT,CARR,CL8.8 M10
8	119.012	2	NUT,HX,FL,SERR 3/4-10
9	169.020.150	2	BOLT,EYE M20X150
10	123.02	4	NUT,HX,FL,CL10 M20
11	1251791	2	EYEBOLT SPACER
12	1305281	1	THROAT
13	1255182	1	WEAR PLATE, BOTTOM
14	1255202	1	WEAR PLATE,RHT
15	164.008	25	SCREW,FHSC,CL10.9 M8X16
16	1255192	1	WEAR PLATE,LFT
17	123.01	2	NUT,HX,FL,CL10 M10
18	1253621	1	HYDRAULIC COUPLER
19	107.012.056	2	BOLT,CARR,GR5 3/4-10X3-1/2
20	163.008.016	4	BOLT,CARR,CL8.8 M8X16
21	1306241	1	FLOOR SEAL, LEFT

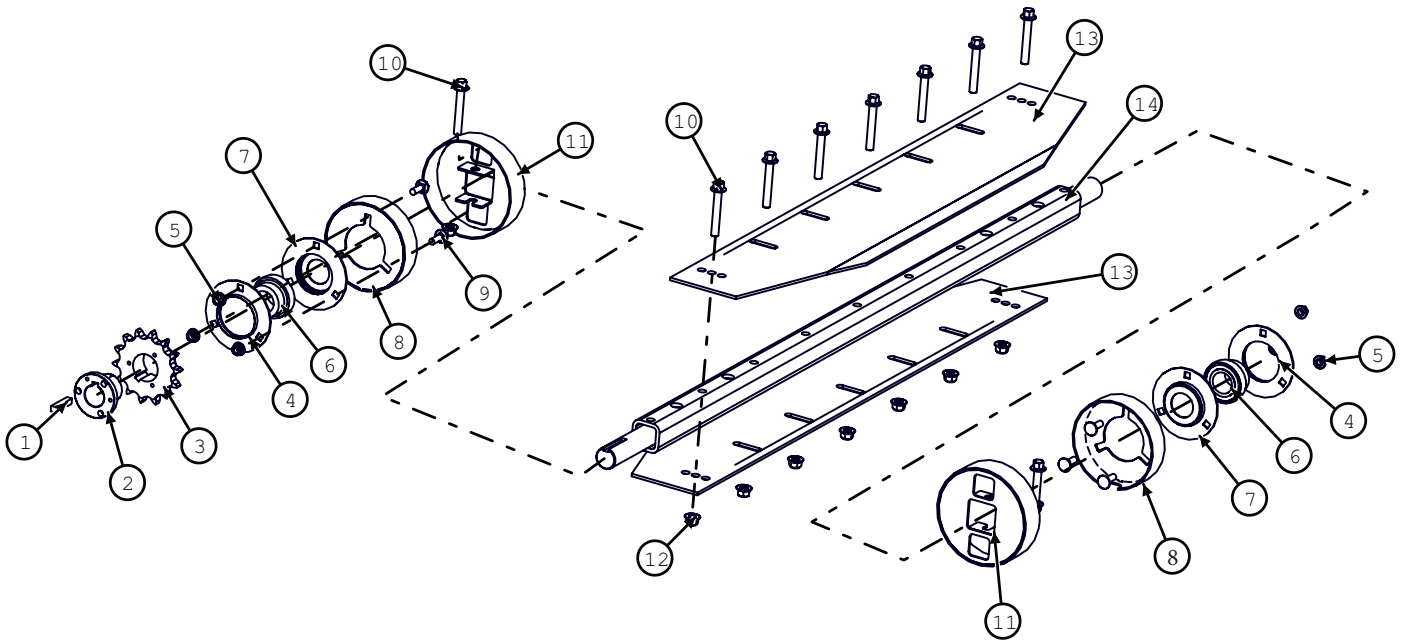
PADDLE BEATER DRIVE



Model CH9010 Hillco Leveling System
For Serial Numbers CH9010-14001 thru CH9010-14999

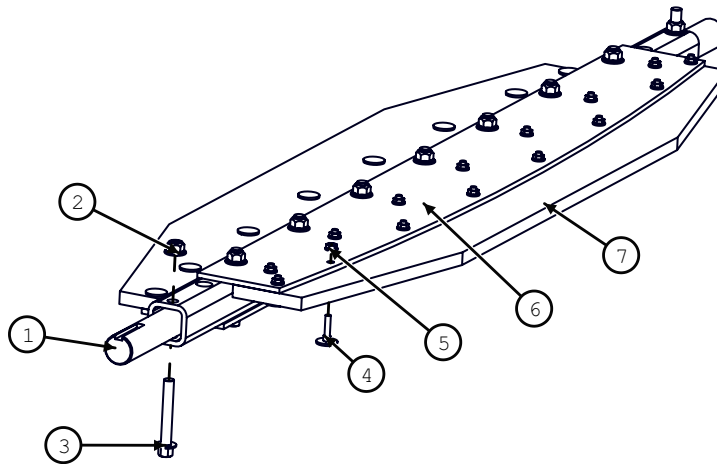
PADDLE BEATER DRIVE			
BOM ID	Part No.	Qty	Description
1	F-HC8-08F20	4	HC8 1/2-20 X 1-1/4
2	F-LW-08A	4	LW 1/2 HD
3	LM-226532	1	TM SPROCKET, RADIAL SLIP CLUTCH
4	F-KST-05X05X80	1	TM KEY, RADIAL SLIP CLUTCH
5	F-SSS-06C08	1	SCREW, SOCKET SET 3/8-16 x 1/2
6	MC-150071	1	SLIP CLUTCH, RADIAL 1-7/16B&5/16 KEY
7	LM-251771	1	TT SHAFT, JACK
8	F-CB-10M030F	3	CARR-8.8M10X1.5X30 HEAD SCREW
9	MC-153861	2	INSERT, BEARING 1-7/16" (GREASEABLE)
10	F-FWH-10	5	WASHER, FLAT, 5/8
11	F-HNF-10ME	15	FLHN-10.9 M10 X 1.50
12	F-KST-06X06X32	1	TM KEY, BEATER DRIVE
13	MC-135491	1	SPROCKET 80P, 11T TB
14	F-HCF-10M016E	3	FLHC-10.9 M10 X 1.50 X 16 PLT
15	MC-135511	1	HUB, SPLIT TAPER 1-7/16
16	MC-153551	2	FLANGETTE, PAIR (GREASEABLE)
17	LM-263021	3	TM ALL THREAD, MAIN DRIVE SHIELD
18	F-HNJ-10MF	3	HN-8.8 M10 X 1.50 JAM PLT
19	LW-305641	1	TM WLD, FRONT SHIELD
20	LW-305711	1	TM SHIELD WLD, REAR DRIVE OUTER
21	F-HCF-16M110E	1	FLHC-10.9 M16 X 2.00 X 110 PLT
22	MC-100237	1	SPROCKET, IDLER, 60P, 15T, 5/8B
23	LM-251881	1	TM SPACER, 60P IDLER SPROCKET
24	F-HNS-16ME	1	HN-10.9M16X2.0 STV
25	LW-305681	1	TM SHIELD WLD, REAR DRIVE INNER
26	MC-101838	1	HUB, POWER LOCK, 1-3/8
27	LM-255211	1	TM SPROCKET, POWERLOCK 18T 60P
28	LW-305571	1	TM WLD, JS MOUNT
29	F-HNF-12ME	4	FLHN-10.9 M12 x 1.75 PLT
30	F-FWH-08	4	FW 1/2 HARD
31	F-HCF-08M025E	3	FLHC-10.9M8X1.25X25
DRIVE CHAINS			
NS	MC-142871	1	LINK, CONNECTING, 80P
NS	MC-142881	1	LINK, OFFSET, 80P
NS	LM-213243	1	TM CHAIN, 30 PIN 80P
NS	MC-139361	1	LINK, CONNECTING, 60P
NS	MC-139371	1	LINK, OFFSET, 60P
NS	LP-255132	1	TM CHAIN, 72 PIN 60P

STEEL PADDLE BEATER



STEEL PADDLE BEATER			
BOM ID	Part No.	Qty	Description
1	F-KST-06X06X32	1	TM KEY, BEATER DRIVE 3/8 X 2
2	MC-135511	1	HUB, SPLIT TAPER 1-7/16
3	MC-136151	1	SPROCKET, 80P, 14T TAPER BORE
4	MC-153551	2	FLANGETTE, ROUND BEARING, PAIR (GREASEABLE)
5	F-HNF-10ME	6	FLHN-10.9 M10 X 1.50
6	MC-153861	2	INSERT, BEARING 1-7/16" (GREASEABLE)
7	MC-153551	2	FLANGETTE, ROUND BEARING, PAIR (GREASEABLE)
8	LW-292671	2	TM WLD, BRG PROTECT WALL
9	F-CB-10M030F	6	CARR-8.8M10X1.5X30 HEAD SCREW
10	F-HCF-12M080E	9	MM FLHC-10.9 M12 X 1.75 X 80 Plated
11	LW-292661	2	TM WLD, BRG PROTECT SHAFT
12	F-HNSF-12ME	9	FLHN 10.9 M12 X 1.75 STOVER
13	LB-286321	2	TB PADDLE, METAL (NARROW)
14	LA-251632	1	TB ASM, SHAFT

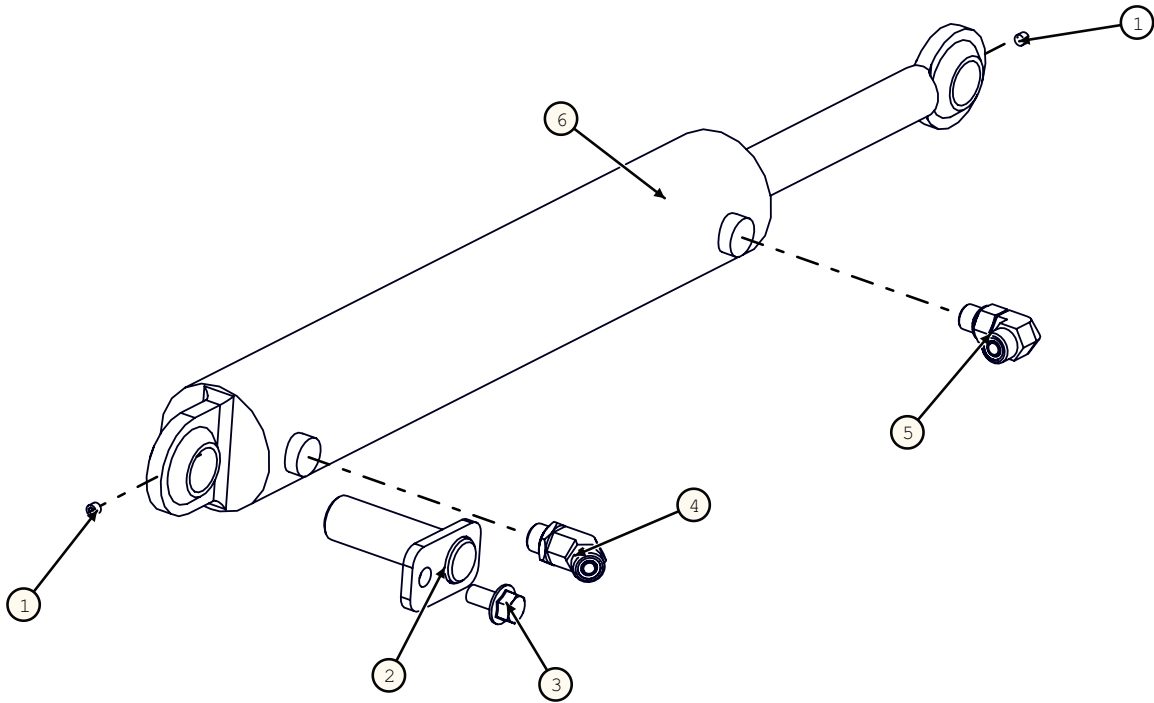
RUBBER PADDLE BEATER



RUBBER PADDLE BEATER			
BOM ID	Part No.	Qty	Description
1	F-EB-04C20	30	ELEVATOR BOLT
2	F-HCF-12M080E	9	MM FLHC-10.9 M12 X 1.75 X 80 Plated
3	F-HNF-04C	30	FLHN-GR5 1/4-20
4	F-HNSF-12ME	9	FLHN-10.9 M12 X 1.75 STVR
5	LA-251632	1	TB ASM, SHAFT
6	LP-272172	2	TB PLATE, PADDLE BACKING
7	LP-272182	2	TB PADDLE, RUBBER

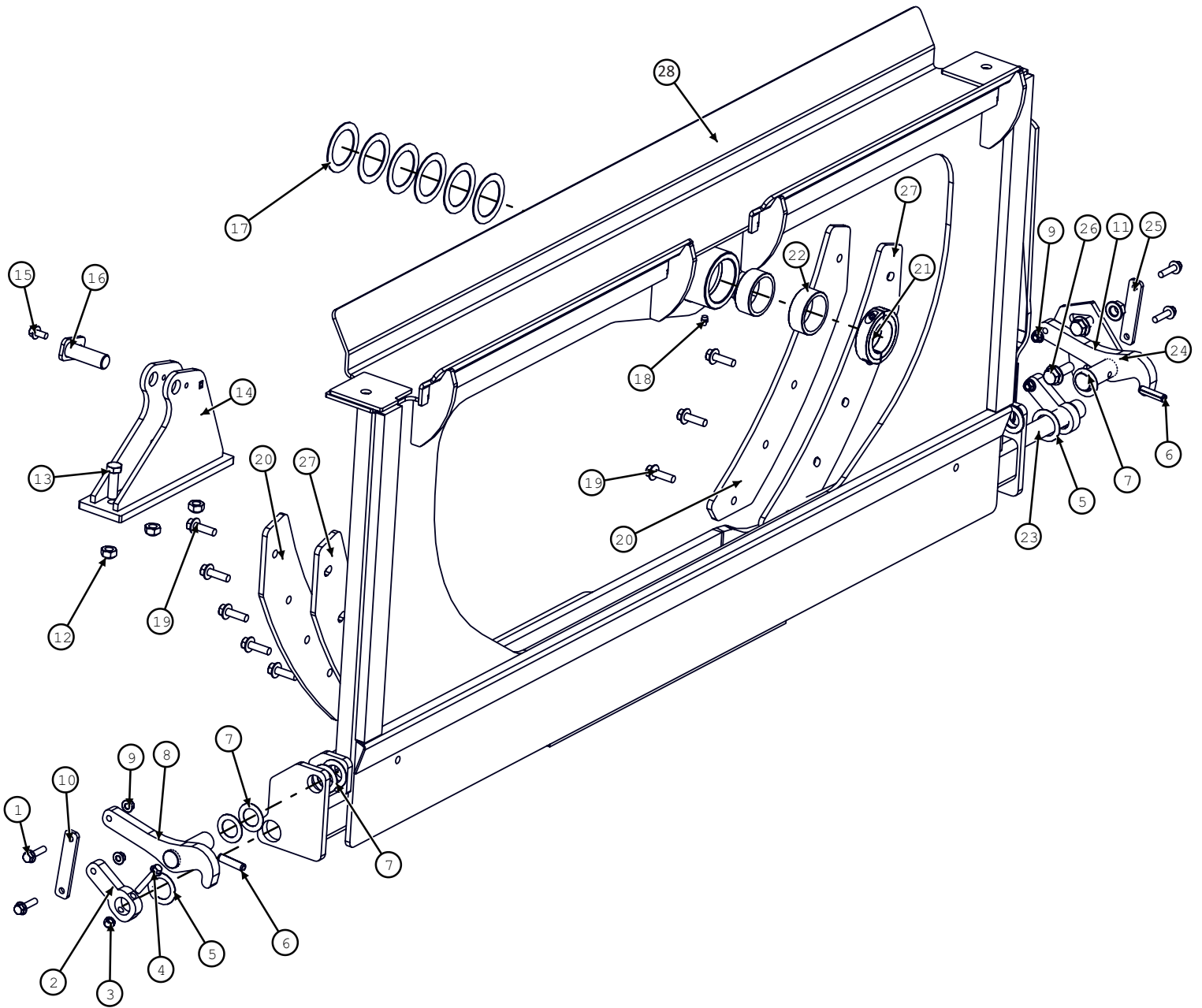
Model CH9010 Hillco Leveling System
 For Serial Numbers CH9010-14001 thru CH9010-14999

SLAVE CYLINDER



SLAVE CYLINDER			
BOM ID	Part No.	Qty	Description
1	F-SSS-04F04	2	SCREW, SOCKET SET 1/4-28 X 1/4
2	LA-229071	1	TM PIN ASM, BASE END
3	F-HCF-10M020E	1	FLHC-10.9 M10 X 1.5 X 20 PLT
4	HA-F-6MF6MO	1	#6 MORS X #6 MORB 45 DEG
5	HA-L-6MF6MO	1	ELBOW, 90°, 6MF x 6MO
6	HC-147491	1	CYL, 1-1/8" R, 12-1/2" S, 2-1/2 B, 21" CPC
NS	HC-141281	1	SEAL KIT, SLAVE CYLINDER

TRANSITION HEADER ADAPTER

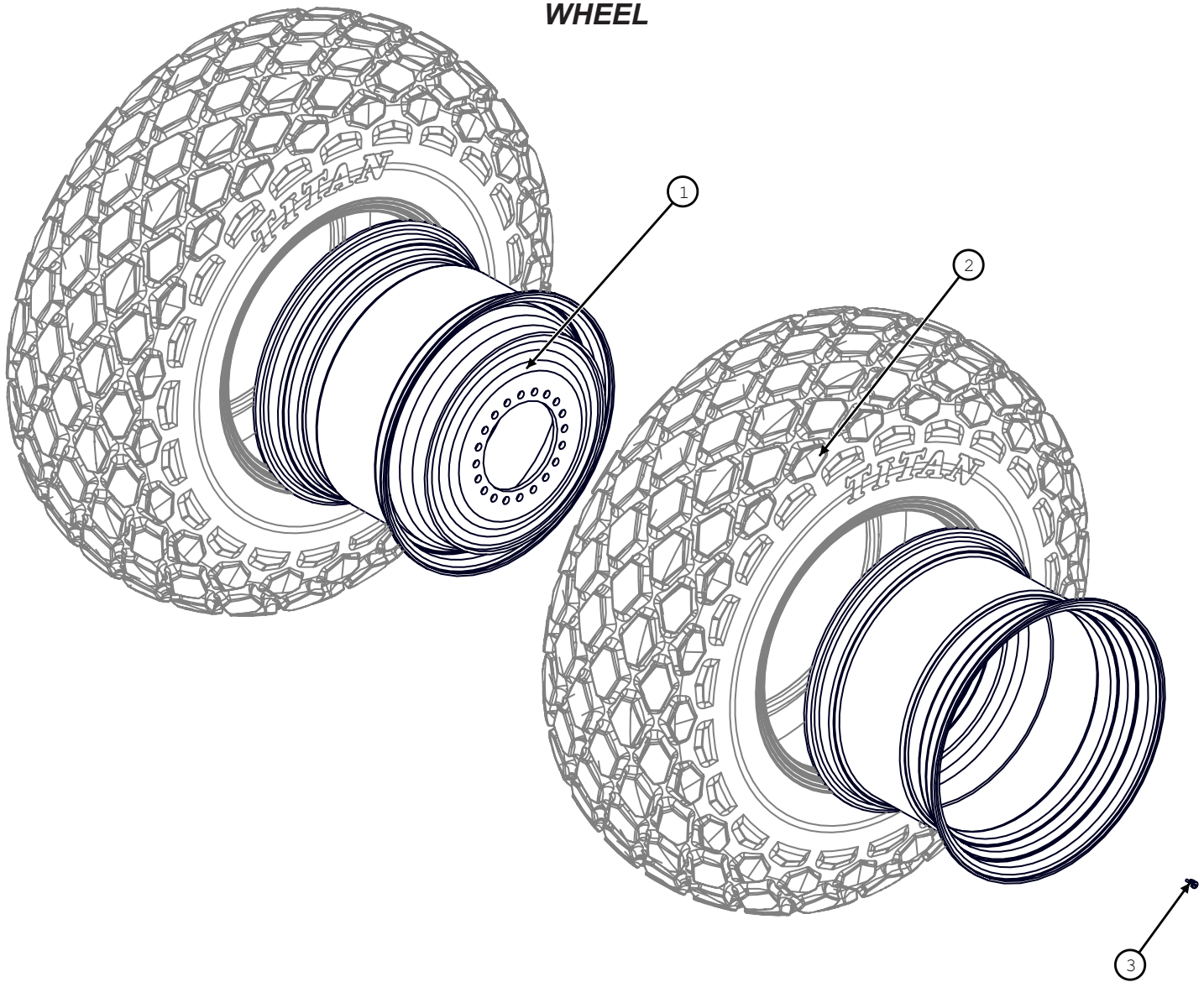


Model CH9010 Hillco Leveling System
For Serial Numbers CH9010-14001 thru CH9010-14999

TRANSITION HEADER ADAPTER			
BOM ID	Part No.	Qty	Description
1	F-HCF-10M040E	4	FLHC 10.9 M10 X 1.50 X 40 PLT
2	LM-270191	1	TM ARM, RH LOWER PIVOT
3	F-HNS-10ME	1	HN-10.9 M10 X 1.50 STOVER
4	F-HCF-10M060E	1	FLHC-10.9 M10 X 1.50 X 60 PLT
5	F-MB-18NR24	2	MACH BUSH 18GA NR 1-1/2 ID
6	F-PR-08X32	2	PIN, ROLL 1/2 X 2
7	F-MB-18NR20	7	MACH BUSHING, 18GA NR,1-1/4ID
8	LA-270251	1	TM ASM, RH HDR LATCH
9	F-HNSF-10ME	4	FLHN-10.9 M10X1.5 STV
10	LM-270211	1	TM LINKAGE, RH HDR LOCK
11	LA-270261	1	TM ASM, LH HDR LATCH
12	F-HNS-16ME	3	HN-10.9M16X2.0 STV
13	F-HC-16M050E	3	HC-10.9M16x50
14	LA-255141	1	TM MOUNT ASM, ROD
15	F-HCF-10M020E	1	FLHC-10.9 M10 X 1.5 X 20 PLT
16	LA-229071	1	TM PIN ASM, BASE END
17	F-MB-14NR40	7	MACHINE BUSHING 14GAUGE 2-1/2"
18	HC-133891	1	ZERK, GREASE 1/8 NPT STRAIGHT
19	F-HCF-12M040E	10	FLHC-10.9 M12 X 1.75 X 40 PLT
20	LM-255121	2	TM PLATE, BACKING
21	MC-150742	1	COLLAR,CLAMPING,2-1/2 ID 3-3/4 OD, 2 PIECE HEAVY
22	LP-305471	2	TM BUSHING, PIVOT
23	LA-270272	1	TM ASM, HDR LATCH CROSS SHAFT
24	F-HNF-16ME	2	FLHN-10.9M16X2.0
25	LM-270201	1	TM LINKAGE, LH HDR LOCK
26	F-HCF-16M045E	2	HEX FLANGE BOLT (CLASS 10.9)
27	LP-249871	2	TM UHMW, BACKING
28	LW-251516	1	TRANSITION ADAPTER ASM
OPTIONAL FOR COMBINES HARVESTING GRASS			
NS	LP-262041	2	TM COVER, GRASS

Model CH9010 Hillco Leveling System
 For Serial Numbers CH9010-14001 thru CH9010-14999

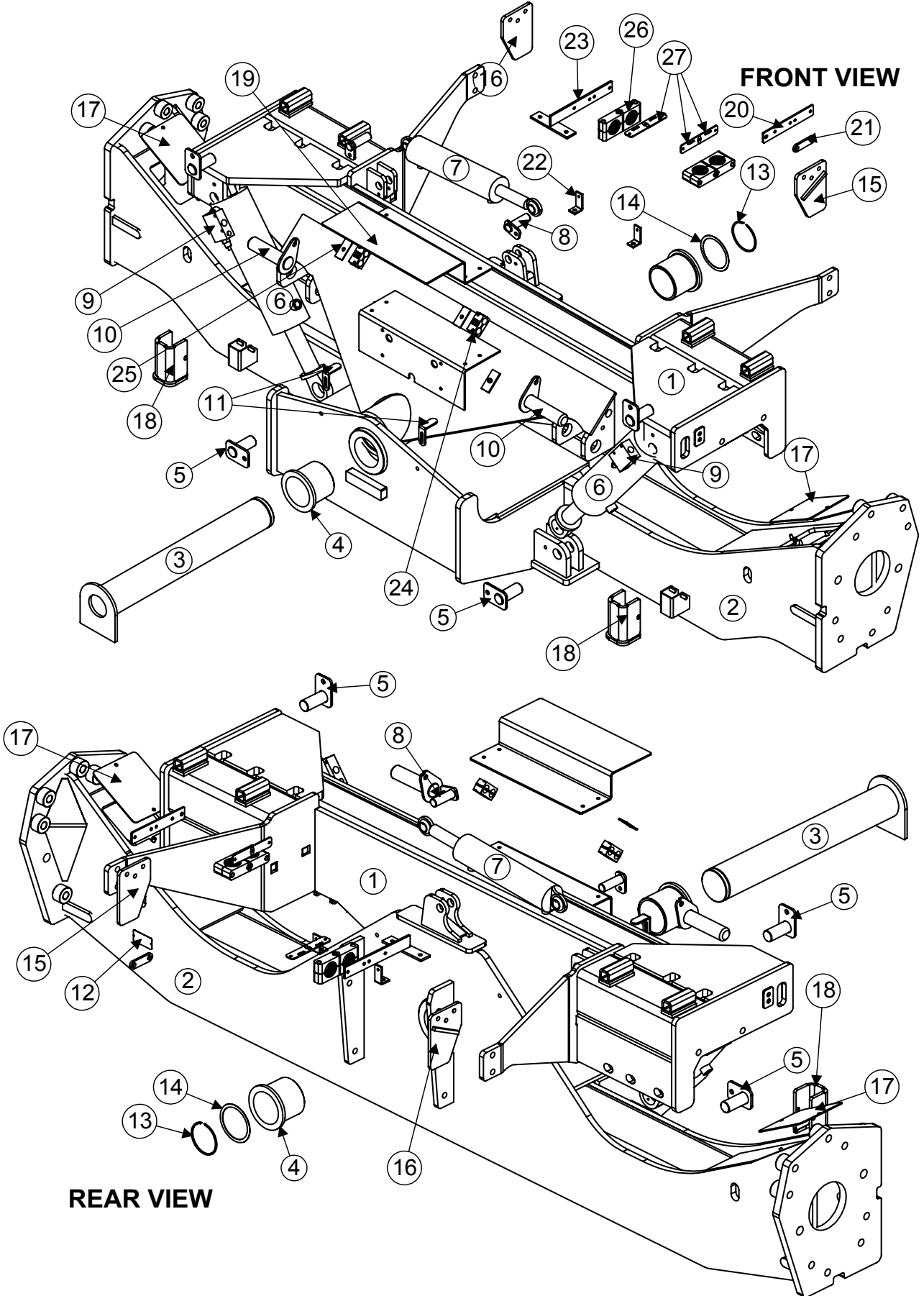
WHEEL



WHEEL COMPONENTS				
REF.	PART NO.	QTY.	PART NAME	NOTES
1	MC-143121	4	WHEEL, 32XDWH21 20-13.19-	
2	-	4	24.5 x 32 6* R3	CONTACT LOCAL TIRE SUPPLIER
NS	-	4	24.5 x 32 6* R1	CONTACT LOCAL TIRE SUPPLIER
3	MC-143921	4	VALVE STEM	
WHEEL FASTENERS				
REF.	PART NO.	QTY.	PART NAME	NOTES
NS	N/A	20	BOLT	CASE P/N 87283525
NS	N/A	10	SPACER PLATE	CASE P/N 87253501
NS	N/A	20	NUT	CASE P/N 336845

Model CH9010 Hillco Leveling System
For Serial Numbers CH9010-14001 thru CH9010-14999

CARRIAGE

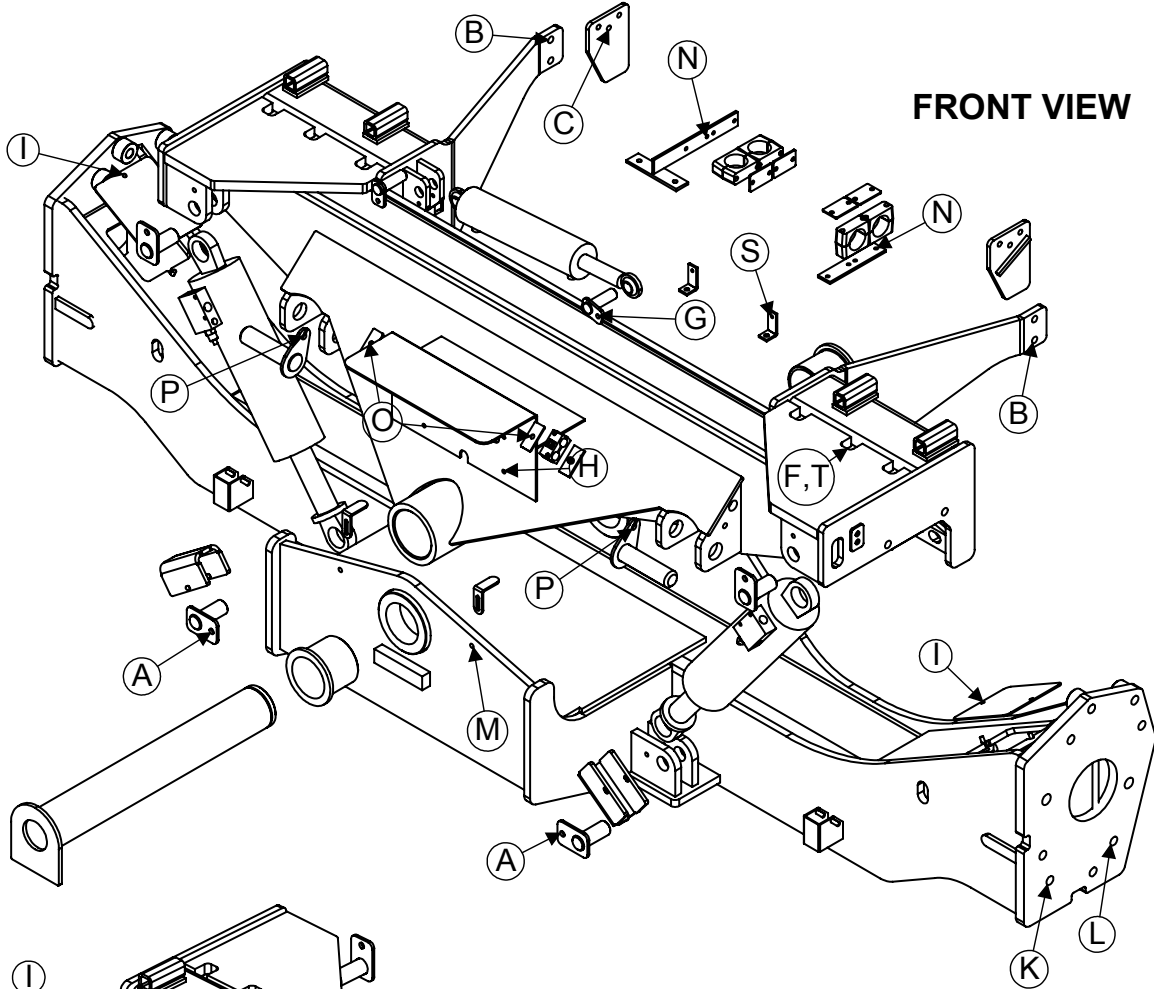


Model CH9010 Hillco Leveling System
For Serial Numbers CH9010-14001 thru CH9010-14999

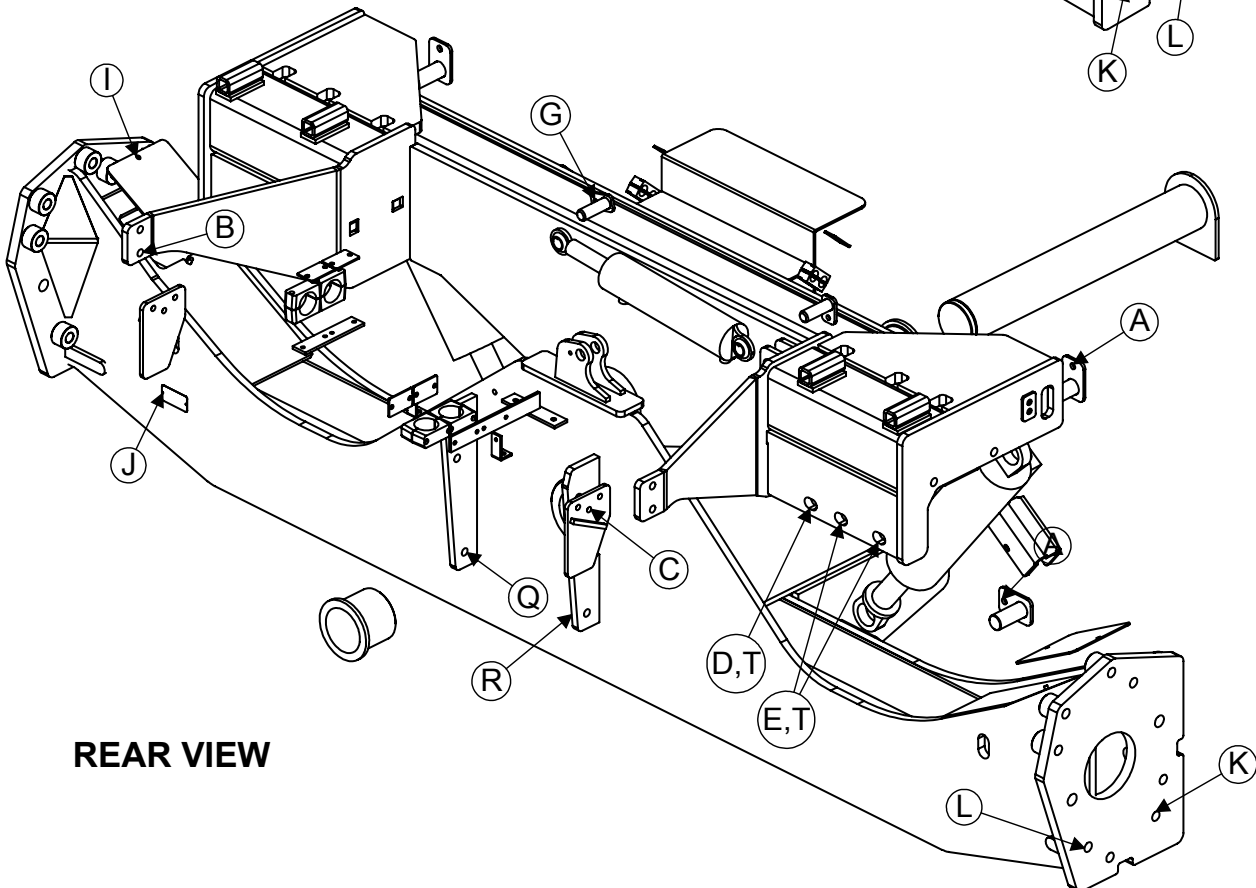
CARRIAGE COMPONENTS				
REF.	PART NO.	QTY.	PART NAME	NOTES
1	LW-251492	1	CO ASM	
2	LA-251531	1	UNDERCARRIAGE ASM	
3	LA-247481	1	CM ASM, MAIN PVT PIN	
4	LP-247961	2	CM BUSHING, PIVOT	
5	LA-230551	4	CM PIN ASM, MAIN CYLINDER	
6	HC-147521	2	CYLINDER, MAIN	SEE HYDRAULICS PAGE 29
7	HC-147501	1	CYLINDER, MASTER	SEE HYDRAULICS PAGE 29
8	LA-229071	2	TM PIN ASM, TRIM CYLINDER	
9	HC-139151	2	VALVE, 3-PORT COUNTERBALANCE	SEE HYDRAULICS PAGE 29
10	LM-255301	2	CM PIN, HEADER LIFT CYLINDER	
11	LP-251551	2	EM PLATE, LIMIT STOP	
12	LA-255951	1	PLATE, SERIAL NUMBER	
13	MC-138651	1	SNAP RING 4"	
14	MC-138641	1-4	WASHER, 4.016" ID X 4.764" OD X .48	
15	LA-251471	1	CM ASM, LEFT SWING ARM MOUNT	
16	LA-251481	1	CM ASM, RIGHT SWING ARM MOUNT	
17	LP-251461	2	CM PLATE, FINAL BOLT COVER	
18	LB-305771	2	CM WLD, CYLINDER STOP	
19	LB-293801	1	EM PLATE, BOX COVER	
NS	LP-285102	1	HYDRO HOSE PULL	PREVENTS HYDRAULIC HOSES FROM RUBBING ON FAN
NS	MC-137501	-	WASHER, QUICK REPAIR 2"	OPTIONAL -- SAFETY STOP -- QTY. AS NEEDED
NS	MC-137251	-	COLLAR, 2-PIECE CLAMPING 2" BORE	OPTIONAL -- SAFETY STOP -- QTY. AS NEEDED
MISCELLANEOUS CARRIAGE COMPONENTS				
REF.	PART NO.	QTY.	PART NAME	NOTES
20	LP-251862	1	HM FLAT, HYDRO HOSE BRACKET	
21	LP-275651	1	HM PLT, HYDRO HOSE SPREADER	
22	LM-251871	2	HM MOUNT, BRAKE LINE	
23	LA-251832	1	HM ASM, HYDRO HOSE BRACKET	
24	HC-140461	2	BEHRINGER TWIN CLAMP .875 DIAMETER	ON OC HOSES BETWEEN CYLINDERS
25	HC-139451	2	BEHRINGER TWIN COVER PLATE (FOR .875)	ON OC HOSES BETWEEN CYLINDERS
26	HC-140641	4	BEHRINGER STD. CLAMP 2" DIAMETER	HYDRO HOSES
27	HC-140651	4	BEHRINGER STD. COVER PLATE	HYDRO HOSES

CARRIAGE FASTENERS

FRONT VIEW



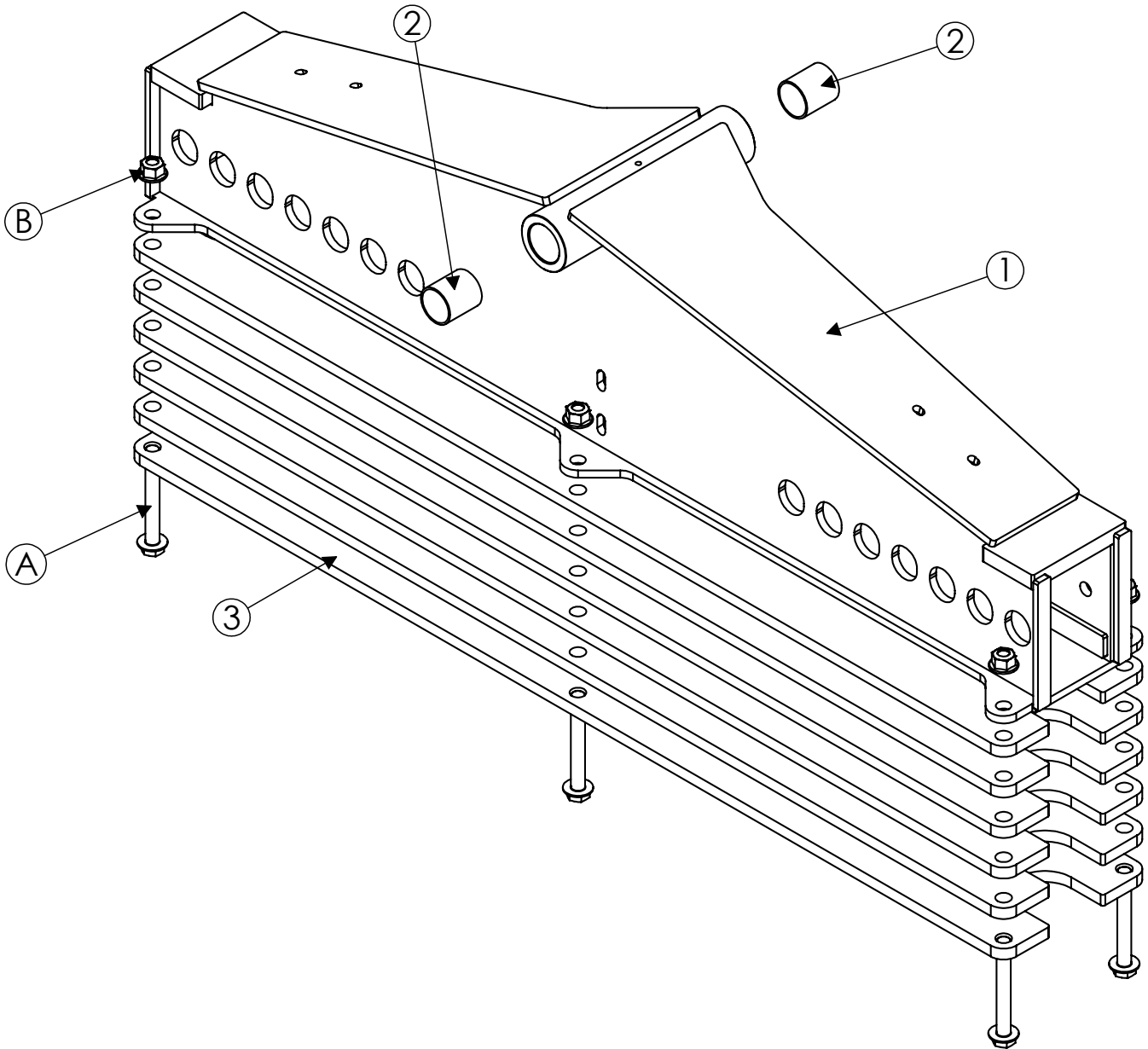
REAR VIEW



Model CH9010 Hillco Leveling System
For Serial Numbers CH9010-14001 thru CH9010-14999

CARRIAGE FASTENERS				
REF.	PART NO.	QTY.	PART NAME	WHERE USED
A	F-HCF-12M025F	4	FLHC-8.8 M12 X 1.75 X 25	LEVELING CYL MNT PIN
B	F-HC-16M050E	4	HC-10.9 M16 X 2.00 X 50	OC SWING ARM PLATE
B	F-HNS-16ME	4	HN-10.9 M16 X 2.00 STOVER	OC SWING ARM PLATE
C	F-HCF-12M030E	6	FLHC-10.9 M12 X 1.75 X 30	SWING ARM MOUNTING BRACKET
C	F-HNF-12MF	6	FLHN-8.8 M12 X 1.75	SWING ARM MOUNTING BRACKET
D	F-HC-20M070E	2	HC-10.9 M20 X 2.5 X 70	OC REAR MOUNTING PLATE
E	F-HC-20M120	4	HC-10.9 M20 X 2.5 X 120	OC REAR MOUNTING PLATE
F	F-HC-20M280E	6	HC-10.9 M20 X 2.5 X 280	OC BOTTOM MOUNTING PLATE
G	F-HCF-10M020E	2	FLHC-10.9 M10 X 1.50 X 20	MASTER CYL MNT PIN
H	F-HCF-08M020E	8	FLHC-10.9 M8 X 1.25 X 20	ELECTRICAL ASM TO OC
H	F-HNF-08ME	8	FLHN-10.9 M8 X 1.25	ELECTRICAL ASM TO OC
I	F-HNF-8MF	4	FLHN-10.9 M8 X 1.25	UC FINAL BOLT COVER PLATES
J	F-UDS-#7X06	2	SCREW, U-DRIVE #7 X 3/8	SERIAL NUMBER PLATE
K	F-HC-20M090E	16	HC-10.9 M20 X 2.50 X 90	FINAL DRIVES
L	F-SHC-20M090E	2	SHCS- 10.9 M20 X 25 X 90	FINAL DRIVES
M	F-HC-8M040F	2	HC-8.8 M8 X 1.25 X 40	LIMIT SWITCH STOPS
M	F-HNF-08MF	2	FLHN-8.8 M8 X 1.25	LIMIT SWITCH STOPS
N	F-HC-6M090F	8	HC-8.8 M6 X 1.0 X 90	HYDRO HOSE CLAMPS
N	F-HNF-6MF	8	FLHN-8.8 M6 X 1.0	HYDRO HOSE CLAMPS
O	HC-139461	2	BEHRINGER TWIN BOLT (FOR .875) HC5 5/16-18 X 1-3/4	ON OC HOSES BETWEEN CYLINDERS
P	F-HC-12M040E	2	HC-10.9 M12 X 1.75 X 40	HEADER LIFT CYLINDER PINS
P	F-HNS-12ME	2	HN-10.9 M12 X 1.75 STOVER	HEADER LIFT CYLINDER PINS
Q	F-HC-16M050E	6	HC-10.9 M16 X 2.00 X 50	TRANSMISSION MOUNTING
R	MC-141961	--	SHIM, ALIGNMENT, 1/16	TRANSMISSION MOUNTING
R	MC-141971	--	SHIM, ALIGNMENT, 1/32	TRANSMISSION MOUNTING
R	MC-141981	--	SHIM, ALIGNMENT, 1/64	TRANSMISSION MOUNTING
S	F-HC-06M020F	2	HC-8.8 M6 X 1.0 X 20	BRAKE HOSES
S	F-HNF-6MF	2	FLHN-8.8 M6 X 1.0	BRAKE HOSES
T	F-HNS-20ME	16	HN-10.9 M20 X 2.50 STOVER PLT	ALL OC MOUNTING BOLTS
NS	F-HNF-6ME	1	FLHN-10.9 M6 X 1.0 [DIN 6923]	HYDRO HOSE PULL
NS	F-HNF-16ME	1	FLHN-10.9 M16 X 2.0	HYDRO HOSE PULL
NS	F-HNF-10ME	1	FLHN-10.9 M10 X 1.50 [DIN 6923]	HYDRO HOSE PULL
NS	F-HCF-10M020E	1	FLHC-10.9 M10 X 1.50 X 20 [DIN 6921]	HYDRO HOSE PULL

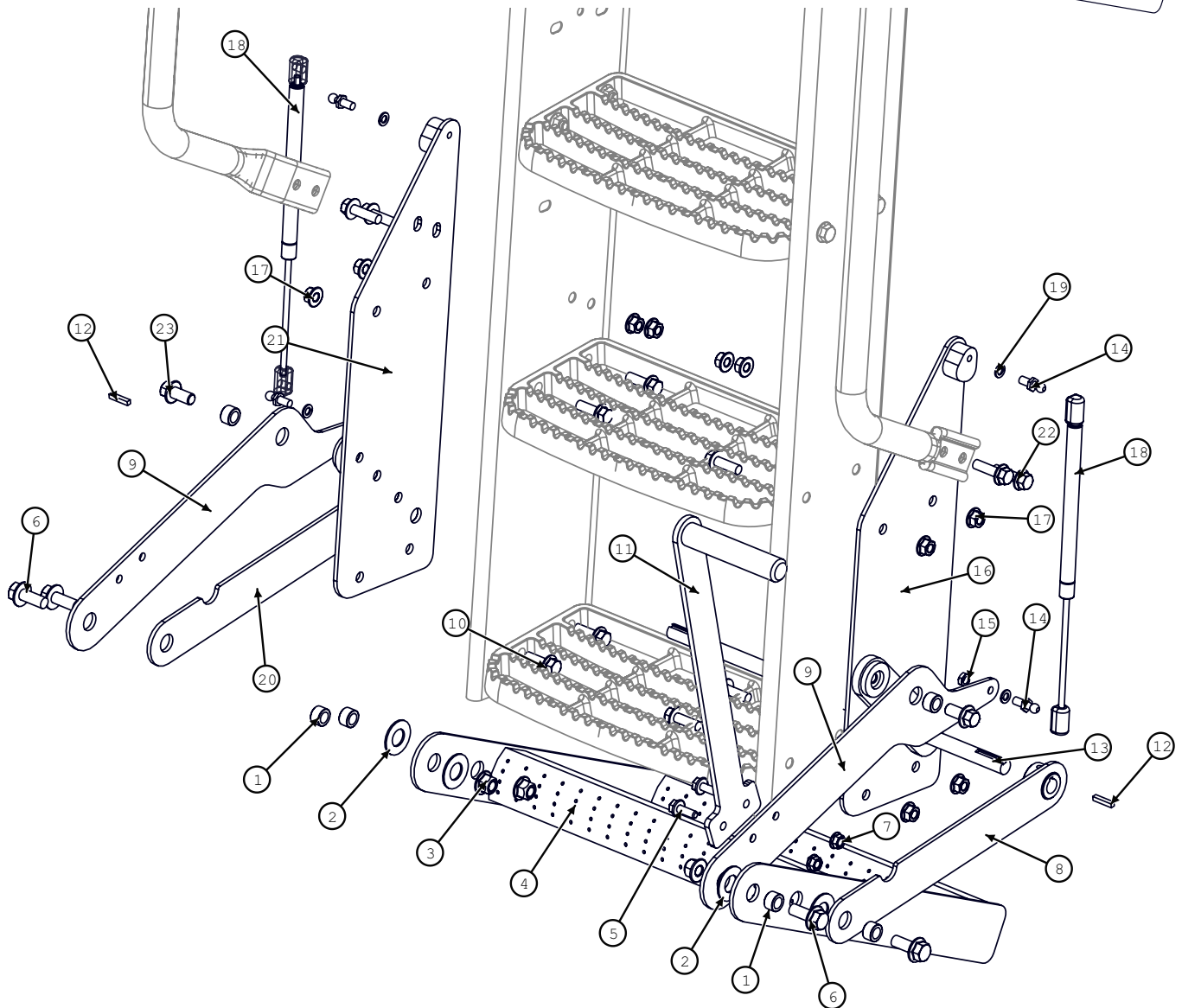
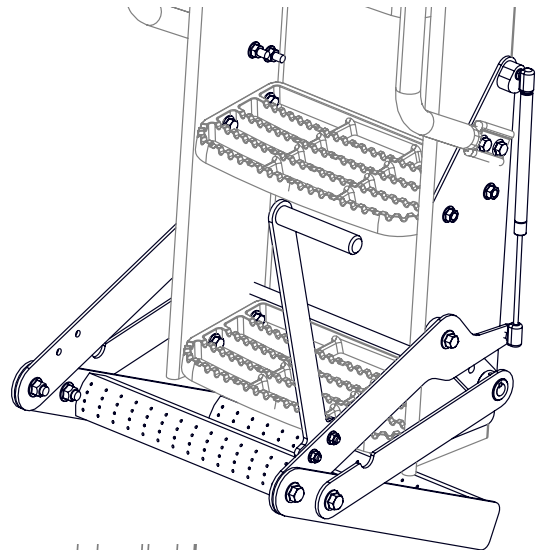
DROP AXLE



Model CH9010 Hillco Leveling System
For Serial Numbers CH9010-14001 thru CH9010-14999

DROP AXLE COMPONENTS				
REF.	PART NO.	QTY.	PART NAME	NOTES
1	LA-252162	1	DA ASM	
2	MC-140791	2	REAR AXLE PIVOT SLEEVE	CNH P/N 84334438
3	LP-285891	6	WEIGHTS, 160 LBS EACH	OPTIONAL
DROP AXLE WEIGHT OPTIONS				
NS	LA-292091	1	DA OPTION, ZERO WEIGHT	160 LBS EACH
NS	LA-292101	1	DA OPTION, ONE WEIGHT	160 LBS EACH
NS	LA-292111	1	DA OPTION, TWO WEIGHT	160 LBS EACH
NS	LA-292121	1	DA OPTION, THREE WEIGHT	160 LBS EACH
NS	LA-292131	1	DA OPTION, FOUR WEIGHT	160 LBS EACH
NS	LA-292141	1	DA OPTION, FIVE WEIGHT	160 LBS EACH
NS	LA-292151	1	DA OPTION, SIX WEIGHT	160 LBS EACH
NS	LA-292161	1	DA OPTION, SEVEN WEIGHT	160 LBS EACH
NS	LA-292171	1	DA OPTION, EIGHT WEIGHT	160 LBS EACH
NS	LA-292181	1	DA OPTION, NINE WEIGHT	160 LBS EACH
NS	LA-292191	1	DA OPTION, TEN WEIGHT	160 LBS EACH
DROP AXLE FASTENERS				
A	F-HC8-12C56	6	HC8 3/4-10 X 3-1/2	1 WEIGHT BOLT PACKAGE
A	F-HC8-12C56	6	HC8 3/4-10 X 3-1/2	2 WEIGHT BOLT PACKAGE
A	F-HC8-12C72	6	HC8 3/4-10 X 4-1/2	3 WEIGHT BOLT PACKAGE
A	F-HC8-12C88	6	HC8 3/4-10 X 5-1/2	4 WEIGHT BOLT PACKAGE
A	F-HC8-12C96	6	HC8 3/4-10 X 6	5 WEIGHT BOLT PACKAGE
A	F-HC8-12C112	6	HC8 3/4-10 X 7	6 WEIGHT BOLT PACKAGE
A	F-HC8-12C120	6	HC8 3/4-10 X 7-1/2	7 WEIGHT BOLT PACKAGE
A	F-HC8-12C136	6	HC8 3/4-10 X 8-1/2	8 WEIGHT BOLT PACKAGE
A	F-HC8-12C144	6	HC8 3/4-10 X 9	9 WEIGHT BOLT PACKAGE
A	F-HC8-12C160	6	HC8 3/4-10 X 10	10 WEIGHT BOLT PACKAGE
B	F-HNSF-20ME	6	M20X2.5 NUT, FLANGED, METRIC 10.9	ALL WEIGHT BOLT PACKAGES
NS	F-LW-12A	6	LW 3/4 HD	ALL WEIGHT BOLT PACKAGES
NS	F-FWH-12	6	FW 3/4 HD	ALL WEIGHT BOLT PACKAGES

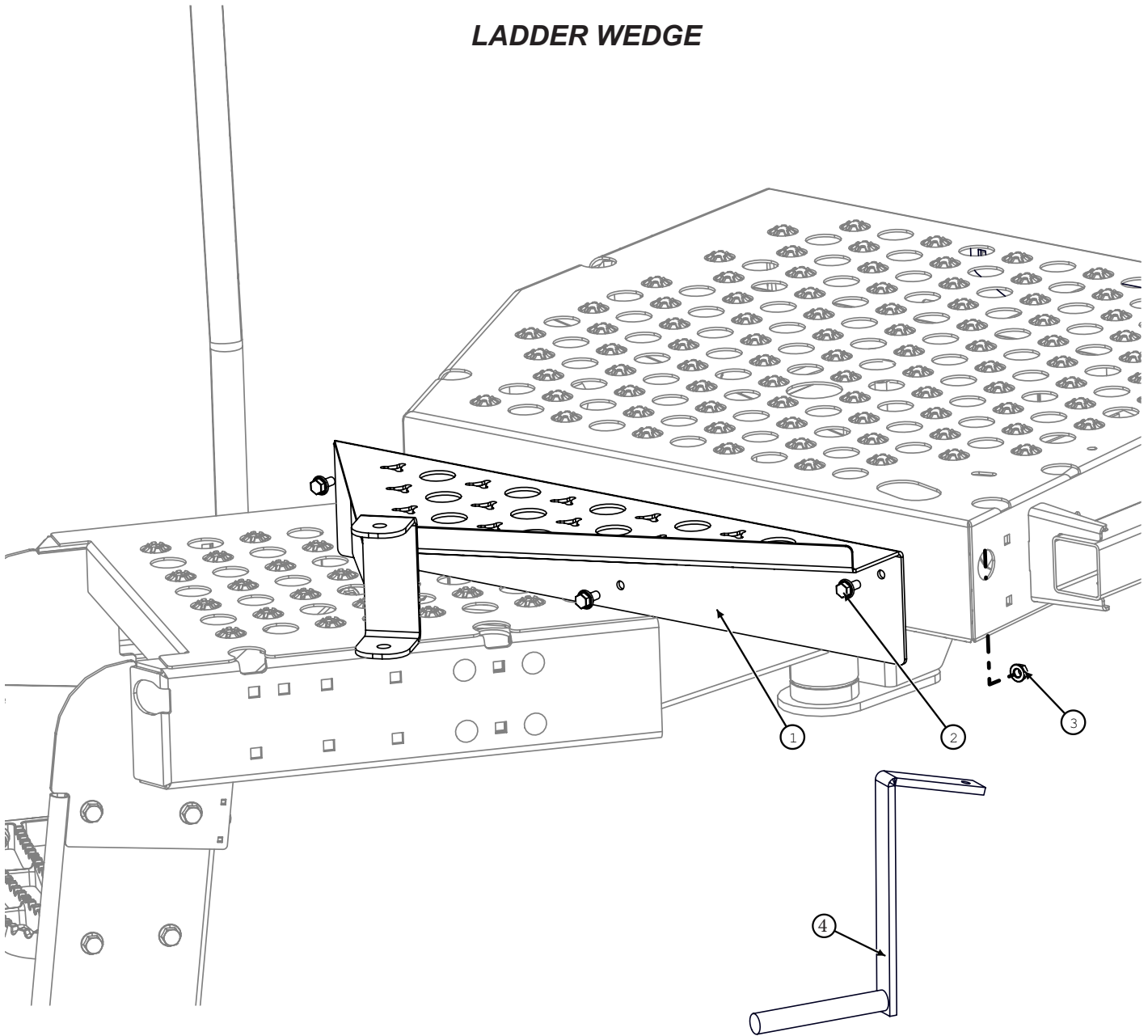
RETRACTABLE LADDER



Model CH9010 Hillco Leveling System
For Serial Numbers CH9010-14001 thru CH9010-14999

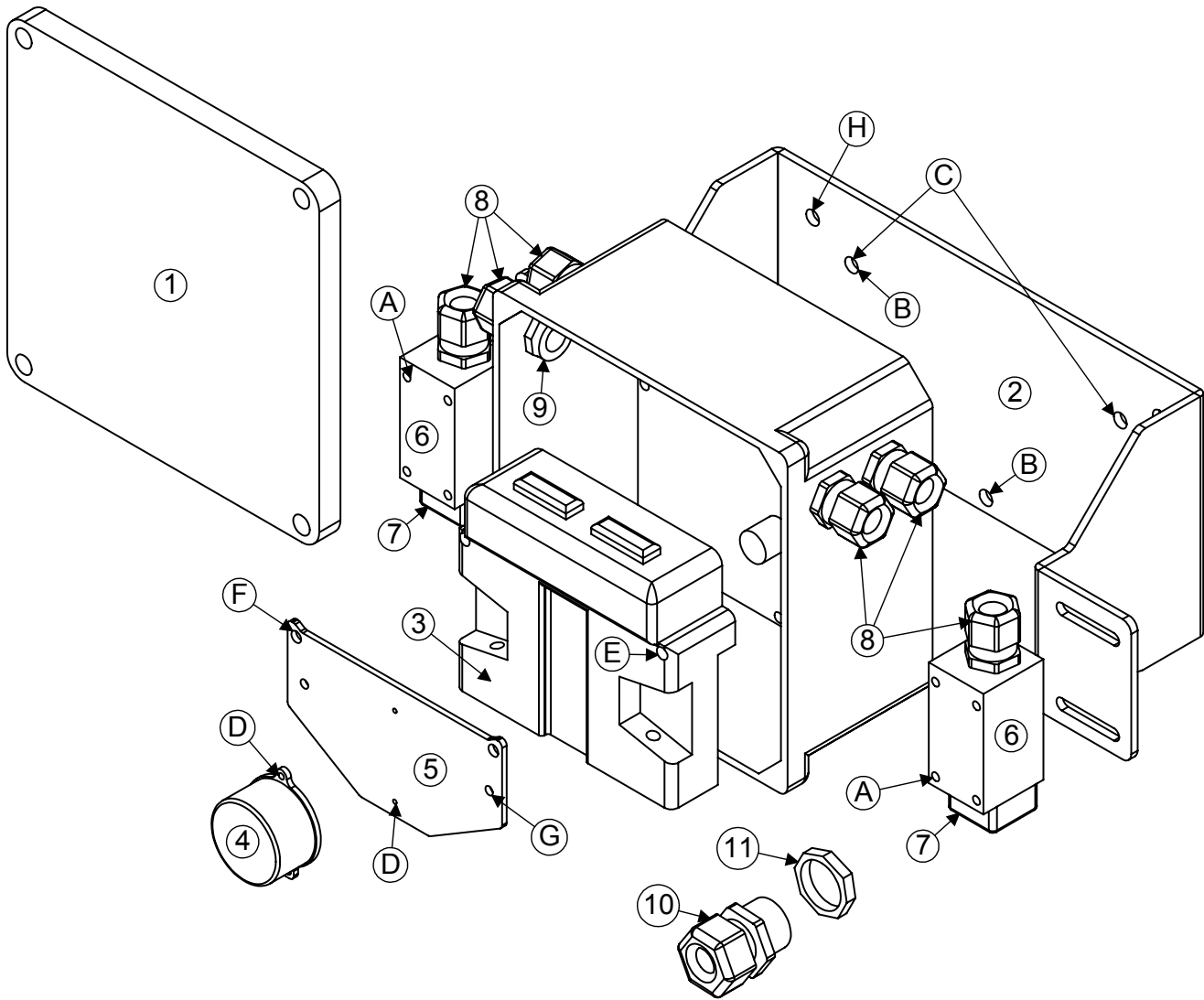
RETRACTABLE LADDER			
BOM ID	Part No.	Qty	Description
NS	LA-305851	1	LM ASM, FOLDING LADDER (FOR 72/82/9230 COMBINES S/N (-YDG218539)
1-23	LA-306831	1	LM ASM, FOLDING LADDER (FOR 72/82/9230 COMBINES S/N (YDG218540-)
1	LM-299181	6	LM BUSHING, LADDER PIVOT
2	F-MB-14WR12	4	MACHINE BUSHING 14GA WR 3/4ID
3	F-HNSF-12ME	4	FLHN-10.9 M12 X 1.75 STVR
4	LW-305801	1	LM STEP ASM, FOLDING LDR
5	F-HCF-08M025E	2	FLHC-10.9M8X1.25X25
6	F-HCF-12M030E	4	FLHC-10.9 M12 X1.75 X 30 PLT
7	F-HNF-08ME	2	FLHN 10.9 M8 X 1.25
8	LW-305811	1	LM WLD, LEFT LINK
9	LM-305831	2	LM PLATE, UPPER ARM
10	F-HCF-10M030E	8	FLHC 10.9 M10 X 1.5 X 30
11	LA-248861	1	LM ASM, LADDER HANDLE
12	F-KST-03X03X16	2	KEY, STR, 3/16 X 3/16 X 1
13	LM-305861	1	LM RND, ROCK SHAFT
14	MC-134931	4	LIFT SUPPORT BRACKETS (PAIR)
15	F-HNJ-05C	2	HN 5/16-18 JAM
16	LM-305871	1	LM WLD, LEFT LADDER MNT (FOR 72/82/9230 COMBINES S/N (-YDG218539)
16	LW-306781	1	LM WLD, LEFT LADDER MNT (FOR 72/82/9230 COMBINES S/N (YDG218540-)
17	F-HNSF-10ME	12	FLHN-10.9 M10X1.5 STV
18	MC-139251	2	GAS CHARGED LIFT SUPPORT
19	F-LW-05	4	LOCK WASHER 5/16"
20	LW-305821	1	LM WLD, RIGHT LINK
21	LW-305921	1	LM WLD, RIGHT LADDER MNT (FOR 72/82/9230 COMBINES S/N (-YDG218539)
21	LW-306791	1	LM WLD, RIGHT LADDER MNT (FOR 72/82/9230 COMBINES S/N (YDG218540-)
22	F-HCF-10M035E	4	SCREW, FLANGED HEX CAP, 10.9
23	F-HCF-12M025E	2	FLHC-10.9M12X1.75X25

LADDER WEDGE



LADDER WEDGE			
BOM ID	Part No.	Qty	Description
1	LW-307451	1	LM ASM, LADDER WEDGE
2	F-HCF-8M020E	4	FLHC-10.9M8X1.25X25
3	F-HNF-08ME	4	FLHN 10.9 M8 X 1.25
4	LA-251802	2	LM ASM, RH SIDE STEP SUPPORT

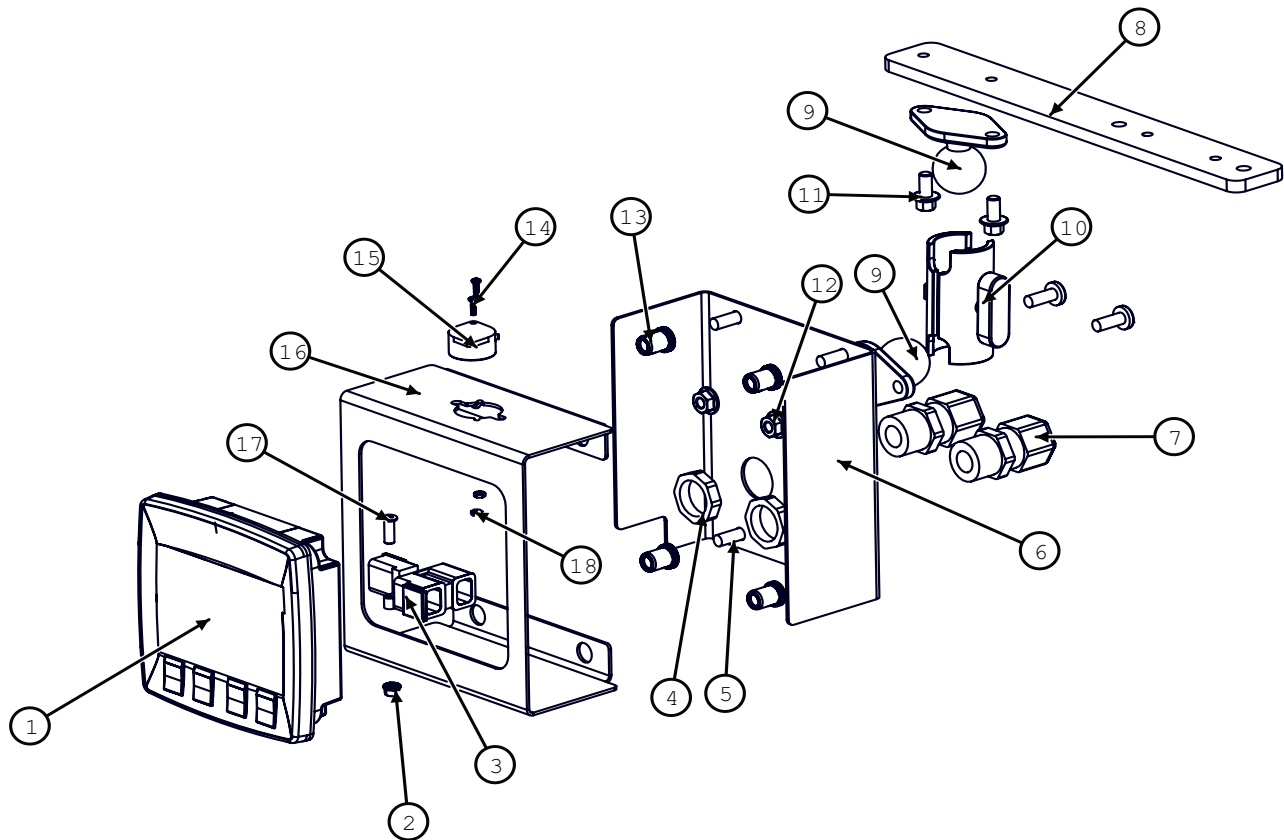
LEVELING BOX



Model CH9010 Hillco Leveling System
For Serial Numbers CH9010-14001 thru CH9010-14999

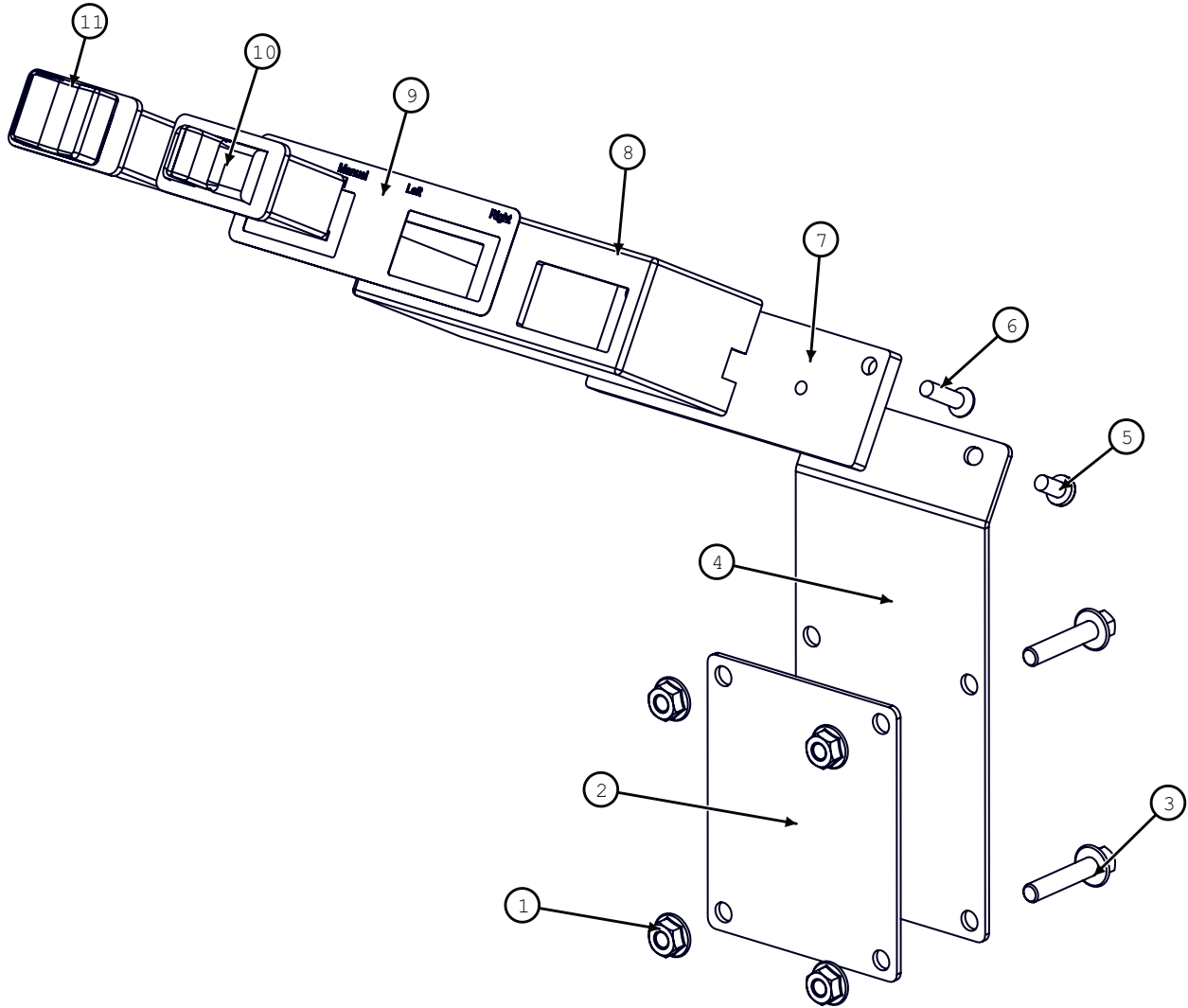
MAIN ELECTRICAL BOX COMPONENTS				
REF.	PART NO.	QTY.	PART NAME	NOTES
ASM	LA-254472	1	EM ASM, CONTROLLER	
NS	LA-260093	1	SAUER-DANFOSS PLUS 1 CONTROLLER	
1	LM-260301	1	EM BOX, CONTROLLER MOUNT	
2	LP-251432	1	EM MOUNT, LEVELING BOX	
3	EC-141831	1	CONTROLLER	
4	LA-261191	1	EM ASM, CLINOMETER	<i>Includes Left/Right and Fore/Aft Clinometers</i>
5	LM-255331	1	EM SHT, CLINOMETER MOUNT	
6	EC-100557	2	BODY, LIMIT SWITCH	
7	EC-100692	2	HEAD, LIMIT SWITCH STR PLUNGER	
8	EC-138781	8	STRAIN RELIEF, NYLON, BLK, 1/2 NPT	2 - ON ELECTRICAL CABLES THRU CAB
9	EC-142121	6	STRAIN RELIEF NUT, 1/2" NYLON, BLK	2 - ON ELECTRICAL CABLES THRU CAB
NS	EC-142101	1	CLAMP, HOSE 3/8" R/C W/ 3/8 HOLE	
NS	EC-142201	1	EXTRACTION TOOL, DEUTSCH	
ELECTRICAL BOX FASTENERS				
REF.	PART NO.	QTY.	PART NAME	WHERE USED
A	F-PHM-#10C28	8	PHMS 10-24 X 1-3/4	LIMIT SWITCH MNT
A	F-HNF-#10C	8	HN 10-24, FLNG SERR	LIMIT SWITCH MNT
B	F-HC5-04C12	3	HC5 1/4-20 X 3/4	PVC BOX TO BRACKET
B	F-LW-04	3	LW 1/4	PVC BOX TO BRACKET
C	F-HCF-08M020E	4	FLHC-10.9 M8 X 1.25 X 20	ELECTRICAL PLATE TO OC
C	F-HNF-08ME	4	FLHN-10.9 M8 X 1.25	ELECTRICAL PLATE TO OC
D	F-PHM-#6C06	2	PHMS #6-32 X 3/8	CLINOMETER MOUNT
E	F-PHM-04C24	2	PHMS 1/4-20 X 1-1/2	CONTROLLER TO PVC BOX
E	F-HNF-04C	2	FLHN 1/4-20 SERR	CONTROLLER TO PVC BOX
F	F-PHM-04C36	2	PHMS 1/4-20 X 2-1/4	GROUNDING PLATE MOUNTING
F	F-HNF-04C	2	FLHN 1/4-20 SERR	GROUNDING PLATE MOUNTING
G	F-PHM-#10C16	2	PHMS 10-24 X 3/4	GROUNDING PLATE GROUND
G	F-HNF-#10C	2	HN5 10-24, SERR	GROUNDING PLATE GROUND
G	F-HN-#10C	2	HN5 10-24	GROUNDING PLATE GROUND
H	F-LWE-05	1	LW 5/16, EXTERNAL STAR	EXTERNAL GROUND WIRE
NS	F-PHM-#6C08	2	PHMS #6-32 X 1/2	F/A CLINOMETER
NS	F-HNF-#6C	2	FLHN #6-32	F/A CLINOMETER

MONITOR DISPLAY



MONITOR			
BOM ID	Part No.	Qty	Description
1-18	LA-307021	1	EM ASM, CAB CONTROL MONITOR
1	EC-146461	1	GRAPHICAL TERMINAL, SD DP200
2	F-HNF-#10C	1	FLHN #10-24 SERR.
3	EC-146531	1	Y-CONNECTOR, BLACK
4	EC-142121	2	STRAIN RELIEF NUT, 1/2" BLACK
5	F-PHM-06M016F	6	PHMS M6 X 1.0 X 16
6	LB-307001X	1	EM SHT, BOX COVER
7	EC-138781	2	STRAIN RELIEF, NYLON, BLK,
8	LM-306981X	1	EM BAR, MONITOR BASE
9	LM-307011	2	EM BASE, MONITOR MNT
10	MC-153871	1	RAM, DBL SOCKET ARM FOR 1" BALL, 2" SOCKET TO SOCKET LENGTH
11	F-HCF-06M012E	2	FLHC 10.9 M6 X 1.0 X 16
12	F-HNF-06ME	2	FLHN-10.9M6X1.00
13	F-RN-06MF	4	RIVET NUT, M6 X 1.00
14	F-PHM-#2C05	2	PHMS #2-56 X 5/16
15	EC-146481	1	BUZZER, PIEZO ELECTRIC
16	LB-306991X	1	EM SHT, DISPLAY MNT
17	F-PHM-#10C08	1	PHMS 10-24 X 1/2
18	F-HN-#2C	2	HN #2-56

REMOTE SWITCHES

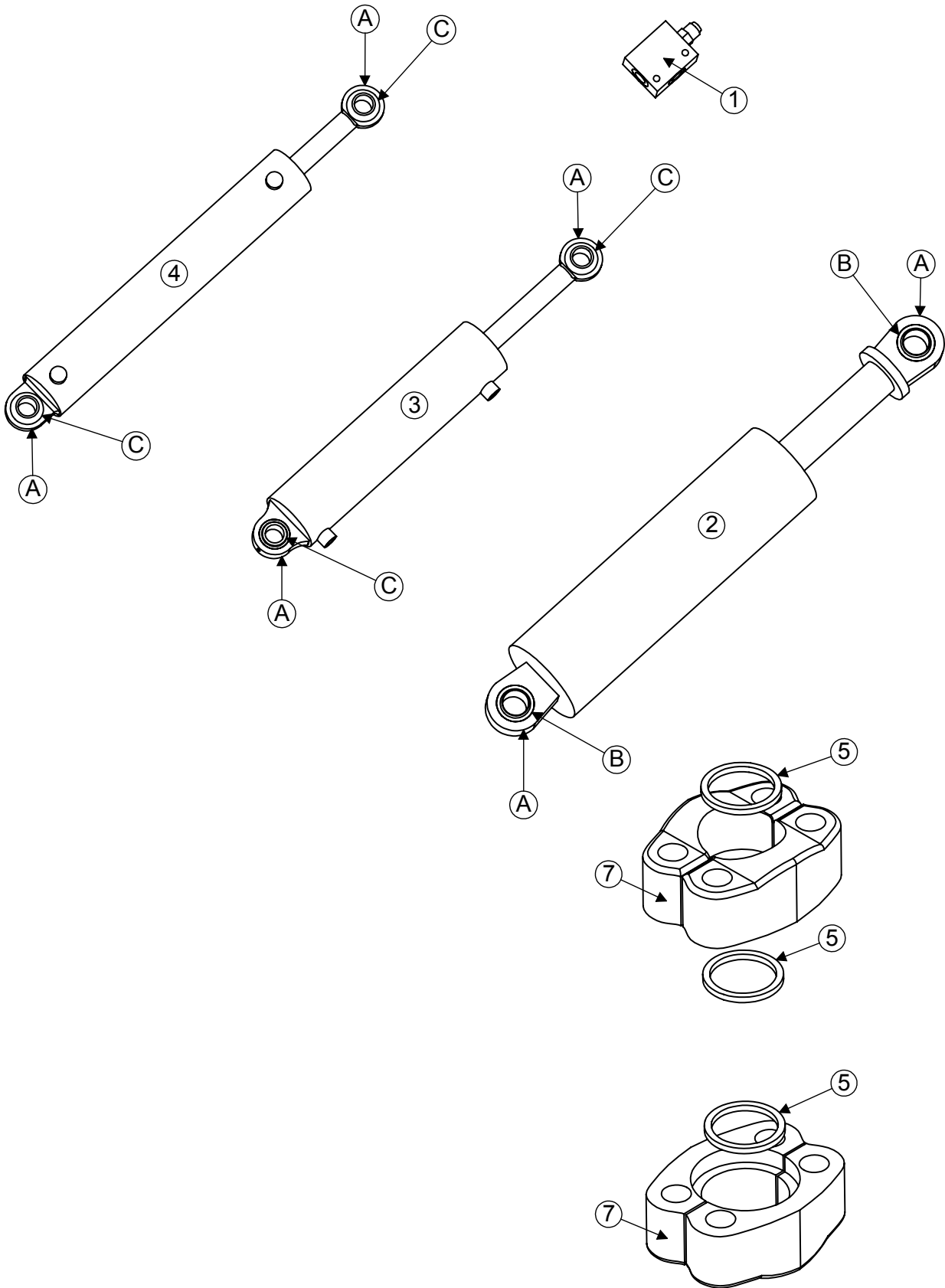


REMOTE SWITCHES			
BOM ID	Part No.	Qty	Description
1-11	LA-307131	1	EM ASM, REMOTE SWITCH BOX
1	F-HNF-06ME	4	FLHN 10.9 M6 X 1.00
2	LP-307151X	1	EM SHT, SWITCH MNT CLAMP
3	F-HCF-06M030E	4	FLHC-10.9M6X1.0X30
4	LB-307141X	1	EM SHT, SWITCH MNT
5	F-PHM-05M010F	2	PHMS M5 X 0.8 X 10
6	F-FHM-05M020F	2	FHMS M5 X 0.8 X 20
7	LM-286381X	1	EM COVER, REMOTE SWITCH
8	LM-286371X	1	EM BOX, REMOTE SWITCH
9	EC-150131	1	DECAL, REMOTE SWITCH BOX
10	EC-150031	1	SWITCH, DPDT, (ON)-OFF-(ON), W/ PADDLE ACTUATOR
11	EC-150121	1	SWITCH, DPDT, ON-NONE-ON, W/ BLACK ROCKER

ELECTRICAL CONNECTORS & CABLES

ELECTRICAL CONNECTORS				
REF.	PART NO.	QTY.	PART NAME	NOTES
NS	EC-141741	4	DTM SERIES, 12 SOCKET WEDGE	
NS	EC-141751	3	DTM SERIES, 12-SOCKET PLUG - GRAY	
NS	EC-141761	1	DTM SERIES, 12-SOCKET PLUG - BLACK	
NS	EC-143271	1	DTM SERIES, 12-PIN WEDGE	
NS	EC-146531	1	Y-CONNECTOR, BLACK	
NS	EC-139641	4	CONNECTOR, PARALLEL, 16-14 GA	
NS	EC-141771	7	DTM SERIES, SOCKET CONTACT, STAMPED	
NS	EC-141781	10	DTM SERIES, PIN CONTACT, STAMPED	
NS	EC-143261	1	DTM SERIES, 12- PIN RECEPTACLE	
NS	EC-145671	13	DTM SERIES, PLUG, SEALING	
NS	EC-146511	2	PLUG, GRAY, 2-SOCKET	
NS	EC-146521	2	WEDGE, BLACK, 2-SOCKET W/B KEY	
NS	EC-146541	1	PLUG, GRAY, W/120 OHM RESISTOR	
NS	EC-146581	20	DTM SERIES, SOCKET CONTACT, SOLID	
NS	EC-146591	2	DTM SERIES, PIN CONTACT, SOLID	
NS	EC-146601	1	RECEPTACLE, GRAY, 2-PIN	
NS	EC-146611	1	WEDGE, BLACK, 2-PIN W/B KEY	
NS	ET-ST-20#10	6	TERMINAL, RING, #10, 20 GA., NON-INSULATED	
CABLE ASSEMBLIES				
REF.	PART NO.	QTY.	PART NAME	NOTES
-	LA-255631	2	EM CABLE ASM, LIMIT SWITCH	
-	LA-249103	1	EM CABLE ASM, BOX TO VALVE	
-	LA-261191	1	EM ASM, CLINOMETER	
-	LA-307931	1	EM CABLE ASM, MANIFOLD	
-	LA-307921	1	EM CABLE ASM, RWA SIGNAL	<i>INCLUDED IN LA-307931</i>
-	LA-308221	1	EM CABLE ASM, LEVELING MANIFOLD	<i>INCLUDED IN LA-307931</i>
-	LA-265481	1	EM CABLE ASM, SENSOR ADAPTER	
-	LA-307051	1	EM CABLE ASM, CAB TO BOX	
-	LA-265791	1	EM CABLE ASM, BUZZER	
-	LA-307061	1	EM CABLE ASM, POWER & GROUND	
-	LA-307041	1	EM CABLE ASM, REMOTE SWITCH	

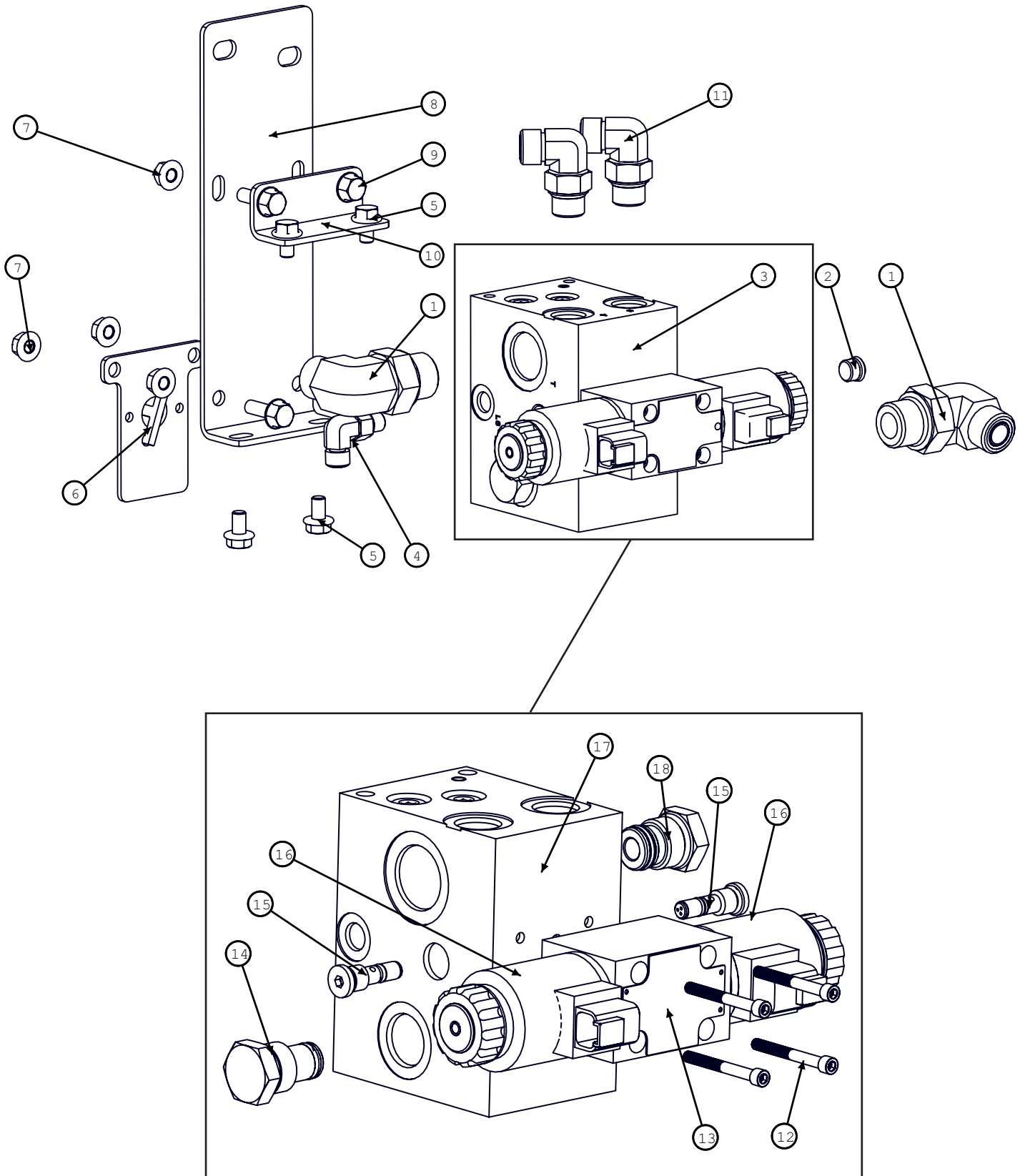
HYDRAULICS COMPONENTS



Model CH9010 Hillco Leveling System
For Serial Numbers CH9010-14001 thru CH9010-14999

COUNTERBALANCE VALVE AND CYLINDERS				
REF.	PART NO.	QTY.	PART NAME	NOTES
1	HC-139151	2	VALVE ASM, COUNTERBALANCE	
..	HC-139181	2	BODY, COUNTERBALANCE VALVE	
..	HC-139161	2	CARTRIDGE, COUNTERBALANCE VALVE	
NS	HC-140361	2	SEAL KIT, COUNTERBALANCE VALVE	
2	HC-147521	2	CYLINDER, MAIN	
NS	HC-135221	2	SEAL KIT, MAIN CYLINDER	
3	HC-147501	1	CYLINDER, MASTER	
NS	HC-134201	1	SEAL KIT, MASTER CYLINDER	
4	HC-147491	1	SLAVE CYL, 1-1/8" R, 12-1/2" S, 2-1/2 B, 21" CPC	
NS	HC-141281	1	SEAL KIT, SLAVE CYLINDER	
HYDRAULIC FASTENERS				
REF.	PART NO.	QTY.	PART NAME	WHERE USED
A	F-SSS-04F04	6	SET SCREW, 1/4-28 X 1/4	ALL CYLINDERS
B	MC-150881	4	1 3/8" BEARING, SEALED SPHERICAL	
C	MC-150871	4	1" BEARING, SEALED SPHERICAL	
CODE 62 SPLIT FLANGE CONNECTOR KIT				
REF.	PART NO.	QTY.	PART NAME	NOTES
ASM	LA-254951	2	KIT, HOSE COUPLER, 1-1/4" CODE 62	
ONE CODE 62 SPLIT FLANGE CONNECTOR KIT ASSEMBLY INCLUDES:				
5	HC-147621	3	O-RING, CODE 62, 1-1/4"	
6	HC-148301	1	HM PLT, CODE 62 (#20)	
7	LM-273011	4	HM FLANGE, CODE 62, #20	
NS	F-HC-14M090E	4	HC-10.9 M14 X 2.00 X 90 PLT	
NS	F-HNS-14ME	4	HN-10.9 M14 X 2.00 STOVER PLT	

LEVELING MANIFOLD



Model CH9010 Hillco Leveling System
For Serial Numbers CH9010-14001 thru CH9010-14999

MANIFOLD			
BOM ID	Part No.	Qty	Description
1	1003.12.10	2	HA: 90° -12MORB X 10MORFS
2	1019.06	1	HA:PLUG:SKT:HD -6ORB
3	1312741	1	MANIFOLD, CUSTOM, LEVELING
4	1003.04.04	1	HA, 90° -4MORB X -4MORFS
5	111.005.008	4	FLHC 5/16-18 X 1/2 SERRATED
6	1259951	1	OT WLD, MOUNT, TILT SENSOR
7	123.008	1	NUT,HX,FL,CL10 M8
8	1313221	1	OT PRT,MANIFOLD, MOUNT BASE
9	122.008.025	4	BOLT,HX,FL,CL10.9 M8X25
10	1313231	1	OT PRT,MANIFOLD MOUNT BASE
11	1003.08.08	2	HA,90° -8MORB X -8MORFS
12	196.#10.028	4	SHCS 10-24 X 1.75
13	155237	1	DIRECTIONAL VALVE,PROPORTIONAL Includes (2) 155239
14	155234	1	CAVITY PLUG, 3 WAY, 10 SERIES
15	155236	2	CHECK VALVE, REVERSE DIRECTION
16	155239	2	SOLENOID COIL,D03,PROP,DEUTSCH
17	155235	1	VALVE BODY, LEVELING
18	155238	1	CAVITY PLUG, 2 WAY, 10 SERIES

Model CH9010 Hillco Leveling System
For Serial Numbers CH9010-14001 thru CH9010-14999

HYDRAULIC HOSES

LEVELING AND TRIM				
REF.	PART NO.	QTY.	PART NAME	WHERE USED
NS	LA-140521	2	1/4" 100R2 14" #6 FORS 90 X	INNER MAIN ROD TO COUNTERBALANCE VALVE PORT #3 (LEFT & RIGHT)
NS	LA-140531	1	1/2" 100R2 HOSE 104" #8 FORS 90 X #8 FORS STR	LEVELING PORT "A" TO COUNTERBALANCE VALVE PORT #2 RIGHT
NS	LA-140541	1	1/2" 100R2 HOSE 184-1/2" #8 FORS 90° X #8 FORS STR	LEVELING PORT "B" TO COUNTERBALANCE VALVE PORT #2 RIGHT
NS	LA-133631	2	1/2" 100R2 HOSE 82" #8 FORS X #8 FORS	OUTER MAIN ROD TO COUNTERBALANCE VALVE PORT #2 (LEFT & RIGHT)
NS	LA-140561	1	1/4" 100R2 HOSE 116" #6 FORS X #6 FORS	MASTER CYLINDER BASE TO SLAVE CYLINDER BASE
NS	LA-140571	1	1/4" 100R2 HOSE 138" #6 FORS X #6 FORS	MASTER CYLINDER ROD TO SLAVE CYLINDER ROD
NS	LA-140581	1	1/4" 100R2 HOSE 111" #6 FORS X #6 FORS	FIELD TRACKER "HEAD" PORT TO MASTER BASE
NS	LA-140591	1	1/4" 100R2 HOSE 104" #6 FORS X #6 FORS	FIELD TRACKER "ROD" PORT TO MASTER ROD
NS	HC-133541	2	ABRASION SLEEVE, NYLON -- 2.19" ID X 32"	HOSES TO TRIM VALVE AND SLAVE CYL
NS	HC-133111	1	SLEEVE, NYLON ABRASION - 2.19 ID X 32 IN	TRIM HOSES AT SLAVE CYLINDER
NS	LA-140492	1	1/4" 100R2 HOSE 35-1/2" #6 FORS X #4 FORS	LOAD SENSE LINE
NS	LA-140502	2	5/8" 100R2 HOSE 28" #10 FORS X #10 FORS	LEVELING VALVE PRESSURE & RETURN HOSE
NS	LA-154131	1	5/8" 100R16 HOSE 18" #10 FORS 90° X #10 FORS STR.	REPLACES PARK BRAKE VALVE SUPPLY LINE
GREASE				
NS	LA-140662	1	3/16 R1 GREASE HOSE 47" 1/8 MPT X 1/8 MPT	MAIN PIVOT PIN TO LH BULKHEAD BTM
NS	LA-141911	1	3/16 R1 GREASE HOSE 25" 1/8 MPT X 1/8 MPT	MASTER BASE TO RH BULKHEAD TOP
NS	LA-141921	1	3/16 R1 GREASE HOSE 70" 1/8 MPT X 1/8 MPT	MASTER ROD TO RH BULKHEAD BTM
BRAKE HOSES				
NS	LA-140602	2	1/4" TITFLEX HOSE 83" #3 MINV X #3 MINV WITH M10-1.0 X #3 FINV ADAPTER ON EACH END	LEFT & RIGHT BRAKE HOSES
HYDRO HOSES				
NS	LA-140551	1	1-1/4" 6000 PSI WP 82" CODE 62 FLANGE STR. X CODE 62 FLANGE 90°	BOTTOM HYDROSTATIC HOSE EXTENSIONS
NS	LA-147691	1	1-1/4" 6000 PSI WP 78" CODE 62 FLANGE STR. X CODE 62 FLANGE 90°	TOP HYDROSTATE HOSE EXTENSION
CASE DRAIN HOSES				
NS	LA-154141	1	1" 100R1 HOSE 110IN #16FORS 90° X #16MORS	CASE DRAIN HOSE EXTENSION
NS	LA-274681	1	1" 100R1 HOSE 114IN #16FORS 90° X #16MORS	CASE DRAIN HOSE EXTENSION (FOR COMBINES WITH VARIABLE DISPLACEMENT HYDRO MOTOR)

Model CH9010 Hillco Leveling System
For Serial Numbers CH9010-14001 thru CH9010-14999

HYDRAULIC ADAPTERS

LEVELING MANIFOLD				
REF.	PART NO.	QTY.	PART NAME	WHERE USED
NS	HA-M-6MF6FF	1	#6 FORS X #6 MORS SWIVEL NUT	LOAD SENSE LINE ON COMBINE
NS	HA-M-16FF16MF	2	#16 ORS SWIVEL NUT RUN TEE	PRESSURE AND TANK LINES ON COMBINE
NS	HA-S-16FF10MF	2	#16 FORS X # 10 MORS REDUCER W/ NUT	PRESSURE AND TANK LINES ON COMBINE
NS	HA-M-10FF10MF	1	#10 ORS SWIVEL NUT RUN TEE	TAP INTO PRESSURE LINE
NS	HA-E-10MO	2	#10 MORB ALLEN HEAD PLUG ZERO-LEAK	"P" & "T" PORTS
NS	HA-L-10MF10MO	1	#10 MORS X #10 MORB 90°	"T" PORT
NS	HA-S-10MF10MO	1	#10 MORS X #10 MORB STR	"P" PORT
NS	HA-L-10FF10MF	1	#10 FORS X #10 MORS 90°	"P" PORT
NS	HA-L-8MF8MO	1	#8 MORS X #8 MORB 90°	"A" LEVELING PORT
NS	HA-L-8FF8MF	1	#8 MORS X #8 FORS 90°	"B" LEVELING PORT
NS	HA-S-8MF8MO	1	#8 MORS X #8 MORB STR	"B" LEVELING PORT
NS	HA-S-4MF4MO	1	#4 MORS X #4 MORB STR	LOAD SENSE SHUTTLE
CASE FIELD TRACKER VALVE				
NS	HA-L-6FF6MF	2	#6 FORS X # 6 MORS 90°	FIELD TRACKER VALVE
MAIN CYLINDER AND COUNTERBALANCE VALVE				
NS	HA-L-8MO8MO	2	#8 MORB X #8 MORB 90°	LEFT & RIGHT COUNTERBALANCE VALVE PORT #1 TO MAIN CYL BASE
NS	HA-L-8MF8MO	2	#8 MORS X #8 MORB 90°	LEFT & RIGHT OUTER MAIN CYLINDER ROD
NS	HA-L-6MF8MO	2	#6 MORS X #8 MORB 90°	LEFT & RIGHT INNER MAIN CYINDER ROD
NS	HA-T-8MF8MO	2	#8 MORS X #8 MORB STR THREAD RUN TEE	LEFT & RIGHT COUNTERBALANCE VALVE PORT #2
NS	HA-L-6MF6MO	2	#6 MORS X # 6 MORB 90°	LEFT & RIGHT COUNTERBALANCE VALVE PORT #3
NS	HC-141931	2	ZERK, GREASE 1/4-28 45°	BASE END OF MAIN LEVELING CYLINDERS
MASTER AND SLAVE CYLINDERS				
NS	HA-Q-6MF6MO	2	#6MORS X #6MORB STR THREAD BRANCH TEE	MASTER BASE AND ROD PORTS
NS	HA-L-6MF6MO	1	#6 MORS X #6 MORB 90°	SLAVE ROD PORT
NS	HA-F-6MF6MO	1	#6 MORS X #6 MORB 45°	SLAVE BASE PORT
NS	HC-135771	1	1/4-28 MALE X 1/8 FPT 90°	BASE END OF MASTER CYLINDER
NS	HC-135881	1	1/4-28 MALE X 1/8 FPT STR	ROD END OF MASTER CYLINDER
GREASE				
NS	HA-S-2FP2MN	3	1/8" NPSM X 1/8" FPT BULKHEAD CONNECTOR	GREASE BULKHEAD MOUNT
NS	HA-NJ-2FN	3	1/8 NPSM BULKHEAD LOCKNUT	BULKHEAD CONNECTORS
NS	HA-L-2FP2MP	1	1/8 MPT 90 STREET EL	MAIN PIVOT PIN
NS	HC-138011	1	ZERK, GREASE 1/4-28 STR	MAIN PIVOT PIN
NS	HC-141231	1	ZERK, GREASE 1/8 MPT, 45°	DROP AXLE PIVOT PIN

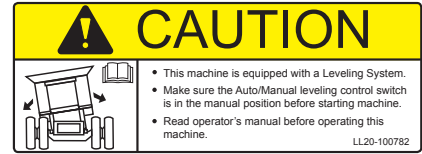
MISCELLANEOUS



1) LL-133741



2) LL-153631



3) LL20-100782



4) LL20-100783



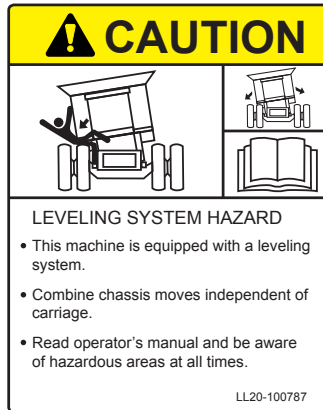
5) LL20-100784



6) LL20-100785



7) LL20-100786



8) LL20-100787



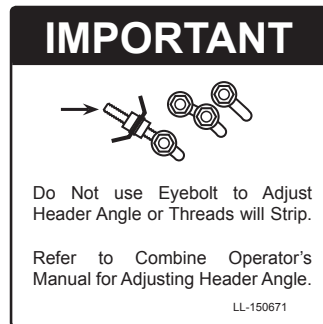
9) LL20-100788



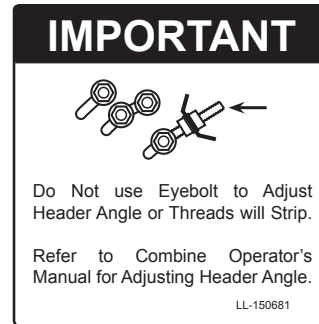
10) LL-143621



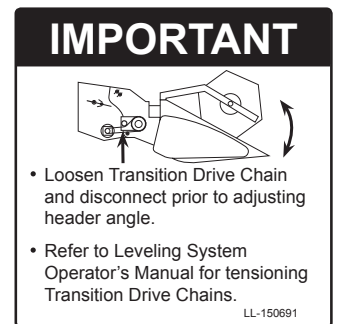
11) LL-141012



12) LL-150571



13) LL-150581



14) LL-150591

Model CH9010 Hillco Leveling System
For Serial Numbers CH9010-14001 thru CH9010-14999

DOCUMENTS AND LABELS				
REF.	PART NO.	QTY.	PART NAME	NOTES
1	LL-133741	2	LABEL, GREASE 50 HR	RH AND LH MAIN LEV CYL BOTTOM
1	LL-133741	1	LABEL, GREASE 50 HRS	BY BASE END OF SLAVE CYLINDER
1	LL-133741	2	LABEL, GREASE 50 HRS	REAR FACE 12" ON BOTH SIDES OF PIVOT PIN
1	LL-133741	2	LABEL, GREASE 50 HRS	RH AND LH BULKHEAD MOUNT
2	LL-153631	2	DECAL, CASE HILLSIDE LEVELING SYSTEM (20 YEAR ANNIVERSARY)	SIDE PANELS ON COMBINE
3	LL20-100782	1	CAUTION LEVELING SYSTEM CAB	WINDOW IN CAB
4	LL20-100783	2	DANGER, CRUSHING HAZARD	FRONT UC LEFT & RIGHT
4	LL20-100783	2	DANGER CRUSHING HAZARD	SIDE OF COMBINE ABOVE REAR TIRES
5	LL20-100784	2	DANGER PINCH POINT	RH & LH UPPER TRANS FACE PLT
6	LL20-100785	1	CAUTION MOVING STEP	COMBINE LADDER CHANNEL
7	LL20-100786	1	WARNING, ELECTRONIC CRUSHING HAZARD	FRONT OF CONTROL BOX
8	LL20-100787	2	CAUTION LEVELING SYSTEM HAZARD	CLEAN GRAIN ELEVATOR (RH); SCREEN (LH)
9	LL20-100788	3	DANGER HYDRAULIC HAZARD	1- EA MAIN CYLINDER
9	LL20-100788	1	DANGER HYDRAULIC HAZARD	ABOVE HYDRAULIC MANIFOLD
10	LL-143621	2	DANGER, AVOID CRUSHING INJURY	REAR OF UC NEAR THE SAFETY STOP MNTS
11	LL-141012	2	DECAL, ROCK TRAP WARNING	BY ROCK TRAP HANDLE AND ON SHIELD ABOVE HANDLE
12	LL-150671	1	LABEL, EYEBOLT LEFT	BELOW LEFT EYEBOLT MOUNT
13	LL-150681	1	LABEL, EYEBOLT RIGHT	BELOW RIGHT EYEBOLT MOUNT
14	LL-150691	1	LABEL, HEADER ANGLE	ON RH SIDE TT ASM NEAR TOP ADJ BOLTS
NS	EC-150131	1	DECAL, REMOTE SWITCH BOX	
NS	LL-141011	2	DECAL, ROCK TRAP WARNING	BY ROCK TRAP HANDLE AND ON SHIELD ABOVE HANDLE
NS	LL-239412	1	LABEL, STEERING WHEEL	TIED TO STEERING WHEEL DURING INSTALLATION
NS	LL-274401	1	LABE, LIMIT SWITCH WARNING	LIMIT SWITCH
NS	LA-255951	1	PLATE, SERIAL NUMBER	LEFT REAR OF UNDERCARRIAGE
NS	D-111212CMA01A	1	CH9010 OPERATORS MANUAL	
NS	D-050322DJC01C	1	DEALER PDI CHECKLIST	
NS	D-050124DJC01B	1	FIPDI CHECKLIST	
NS	D-120623CMA01	1	MANUAL, PARTS	

MISCELLANEOUS COMPONENTS				
REF.	PART NO.	QTY.	PART NAME	NOTES
NS	EC-142101	2	CLAMP, HOSE, R/C, 3/8	BRAKE HOSES
NS	HC-143601	5	CLAMP, HOSE 1-1/8" R/C W/ 3/8 HOLE	HEADER TRIM HOSES ON FEEDER HOUSE
NS	MC-135631	2	CLAMP, HOSE 1-1/2" R/C 3/8 HOLE	CASE DRAIN HOSE
NS	MC-135781	1	CLAMP, HOSE 2" R/C 3/8 HOLE	CASE DRAIN HOSE
NS	F-HCF-8M020E	1	FLHC-10.9 M8 X 1.25 X 20 PLT	HOSE CLAMPS ON CASE DRAIN HOSES
NS	F-HNF-08ME	1	FLHN-10.9 M8 X 1.25 PLT	HOSE CLAMPS ON CASE DRAIN HOSES
NS	MC-145941	2	HD STRAP, 2' TIE DOWN	GULL WING DOORS

Model CH9010 Hillco Leveling System
For Serial Numbers CH9010-14001 thru CH9010-14999

Hillco Technologies, Inc.
107 1st Avenue
Nezperce, Idaho 83543

Phone	800-937-2461
	208-937-2461
Fax	208-937-2280

www.hillcotechnologies.com
email: support@hillcotechnologies.com