

Model 2970S
Sidehill Leveling System
Parts Manual

SN 2970S-1201 thru 2970S-1299

D-070326ADL01A



TABLE OF CONTENTS

1 GENERAL INFORMATION	1-3
Serial Number Location	1-3
Text Format and Illustrations	1-3
Abbreviations.....	1-3
Right and Left Identification	1-3
Parts Orders	1-3
2 TRANSITION	2-1
Transition Fasteners.....	2-3
3 CARRIAGE	3-1
Carriage Fasteners.....	3-3
4 DROP AXLE	4-1
5 ELECTRICAL BOX AND CONNECTORS	5-1
Electrical Cables.....	5-3
6 HYDRAULICS	6-1
Hydraulic Leveling Manifold.....	6-3
Hydraulic Trim Manifold.....	6-5
Hydraulic Hoses	6-7
Hydraulic Hoses (Continued).....	6-8
Hydraulic Adapters	6-9
Hydraulic Hoses (Continued).....	6-10
7 MISCELLANEOUS	7-1
8 PART NUMBER INDEX	8-1
Part Number Index (Continued).....	8-2

Model 2970S Hillco Leveling System
For Serial Numbers 2970S-1201 thru 2970S-1299

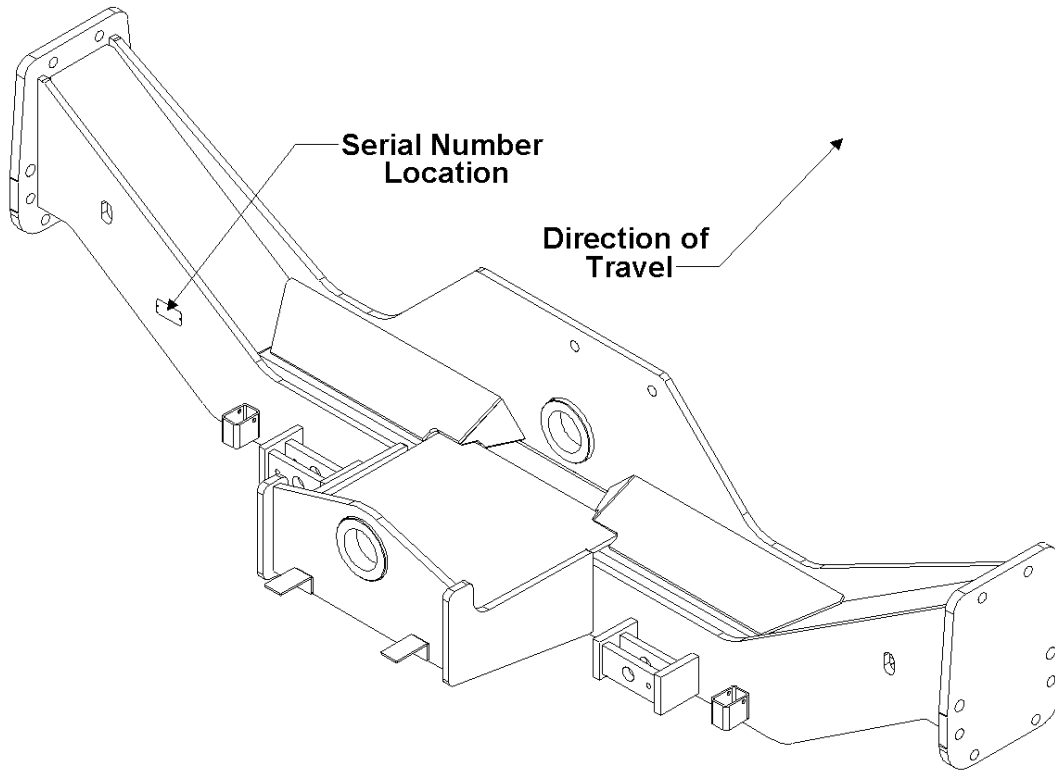
Hillco Technologies, Inc.
107 1st Avenue
Nezperce Id. 83543

Fax	208.937.2280
Phone	208.937.2461
Toll Free	800.937.2461

www.hillcotechnologies.com

1 GENERAL INFORMATION

SERIAL NUMBER LOCATION



TEXT FORMAT AND ILLUSTRATIONS

The arrangement of this parts catalog is for easy identification of parts. All parts are illustrated in exploded views in proper relation to each other. Some diagrams refer to other pages for further information. Reference numbers used in the illustrations refer to line numbers in the part lists. The part lists appear to the right of all diagrams and correspond with those diagrams. Included in the part lists, along with the reference numbers are part numbers, part descriptions and the quantity of the part required per leveling system.

ABBREVIATIONS

SN "Serial Number" refers to the serial number given to each leveling system (by Hillco Technologies), as well as the serial number given to the combine (by the specific combine manufacturer) the leveling system is installed upon. This abbreviation is used interchangeably in both instances. Each model 2970S Leveling System uses the following serial number format: 2970S-XXXX (sequential numbers).

ASM "Assembly" refers to a whole grouping of parts (usually shown in the diagram corresponding with the page where "ASM" is shown unless otherwise noted). Some assemblies have parts that are sold separately, however some must be purchased as a single unit. Hillco Product Specialists will be able to assist you with any questions.

NS "Not Shown" refers to a part that is not depicted in the illustration.

RIGHT AND LEFT IDENTIFICATION

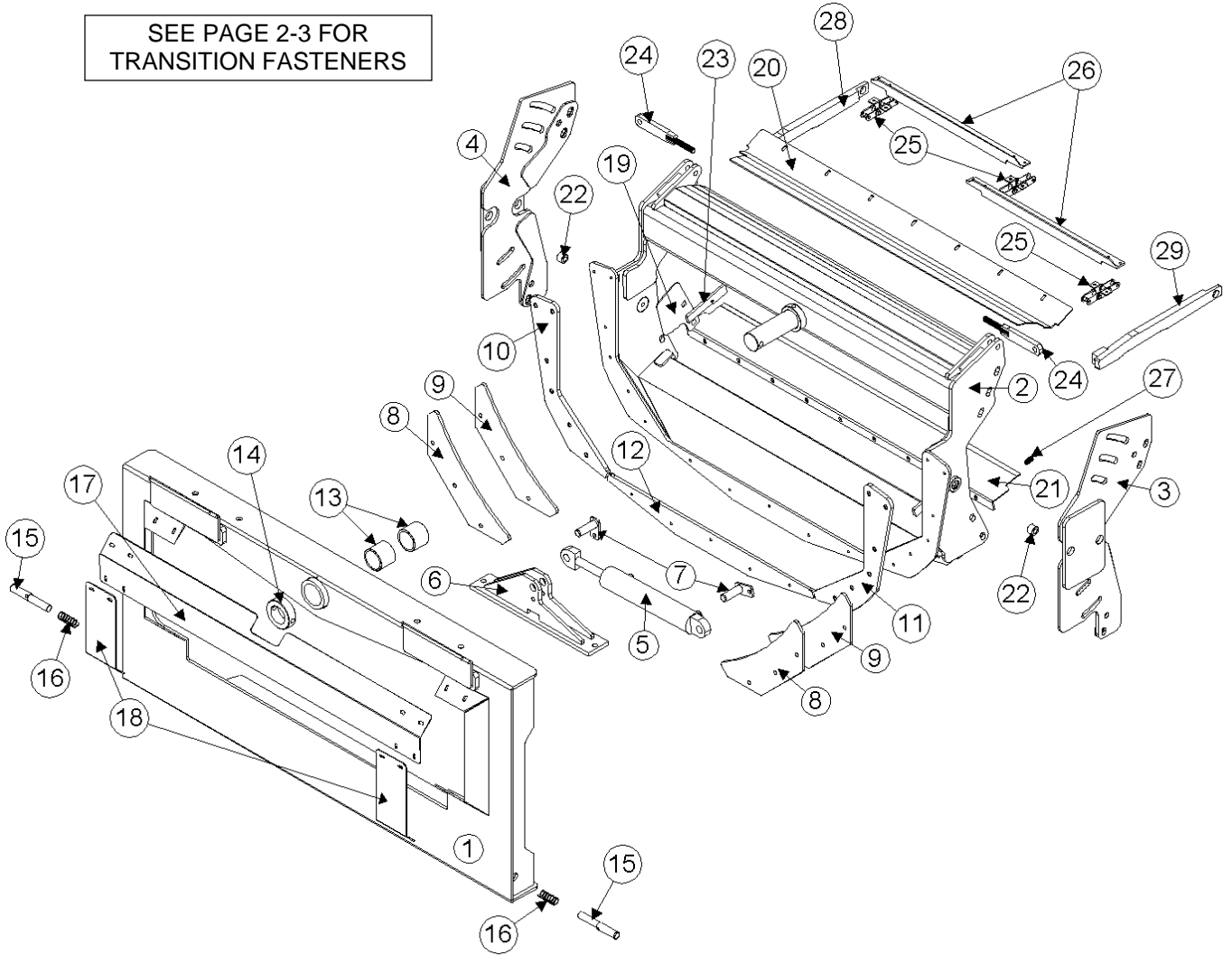
The reference to right-hand and left-hand in this catalog is identified by the operator sitting in the operator's seat, looking toward the front of the machine (in normal forward travel).

PARTS ORDERS

Orders must specify product model, serial number, correct part number, complete description, quantity required, method of shipment, shipping address, and billing address.

2 TRANSITION

SEE PAGE 2-3 FOR
TRANSITION FASTENERS

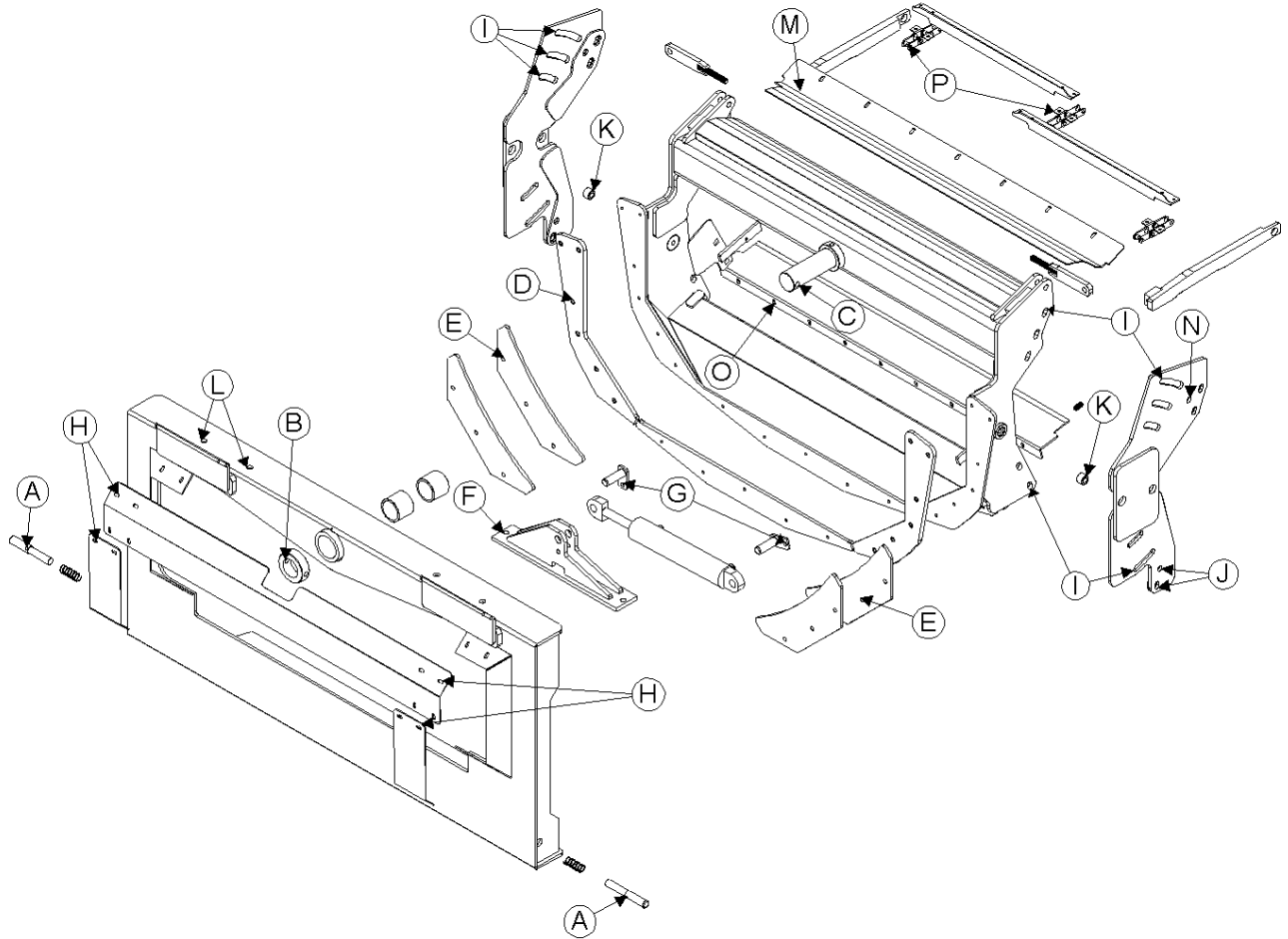


Model 2970S Hillco Leveling System
For Serial Numbers 2970S-1201 thru 2970S-1299

TRANSITION COMPONENTS				
REF.	PART NO.	QTY.	PART NAME	NOTES
1	LA-250163	1	TA ASM	
2	LA-250243	1	TT ASM, FRONT	
3	LA-260721	1	TT ASM, REAR LEFT	
4	LA-260771	1	TT ASM, REAR RIGHT	
5	HC-138581	1	CYLINDER, SLAVE	**SEE HYDRAULIC PAGE 6-2
6	LA-250713	1	TM ASM, SLAVE CYLINDER ROD MOUNT	
7	LA-253883	2	LM ASM, PIN	
8	LP-250551	2	TM UHMW, BACKING WEARPAD	
9	LM-250541	2	TM PLT, BACKING	
10	LM-250571	1	TM UHMW, RIGHT WEARPAD	
11	LM-250561	1	TM UHMW, LEFT WEARPAD	
12	LM-250581	1	TM UHMW, BOTTOM WEARPAD	
13	LTP-241721	2	BUSHING, PIVOT	
14	LM-226841	1	TM COLLAR, PIVOT	
15	LM-229192	2	TM ROD, LOCK	
16	MC-135531	2	TM SPRING, LOCK PIN	
17	LP-250522	1	TM PLT, TOP SHIELD	
18	LM-250534	2	TM PLT, LEFT & RIGHT SHIELD	
19	LP-260791	2	TM SHEET, ANTI-LEAK	
20	LP-260801	1	TM SHIELD, TOP	
21	LP-260811	1	TM PLATE, FLEX FLOOR	
22	LM-260821	2	TM BUSHING, PIVOT OUTER	
23	LP-261351	2	TM UHMW, THROAT SEAL	
24	LA-261021	2	TM ASM, DRAG LINK	
25	MC-143632	3	CA 557 FEEDER CHAIN, 4-PIN	LENGTHENS ORIGINAL FEEDER HOUSE CHAIN
26	MC-143461	2	FEEDER CHAIN SLAT, 96, 97, 9860 STS	SUBS TO JD PART NUMBER H206436
27	MC-143591	7	SPRING, COMPRESSION .703" OD X 1.09" LENGTH X .125" WIRE DIA	
28	LA-260851	1	TM ARM ASM, FEEDER DRUM RHT	
29	LA-260861	1	TM ARM ASM, FEEDER DRUM LFT	
NS	MC-140261	6	CONNECTING LINK, JD HD CHAIN	
NS	MC-142261	6	S-WIRE KEEPER PINS	SUBS TO JD PART NUMBER H204865

Model 2970S Hillco Leveling System
For Serial Numbers 2970S-1201 thru 2970S-1299

TRANSITION FASTENERS

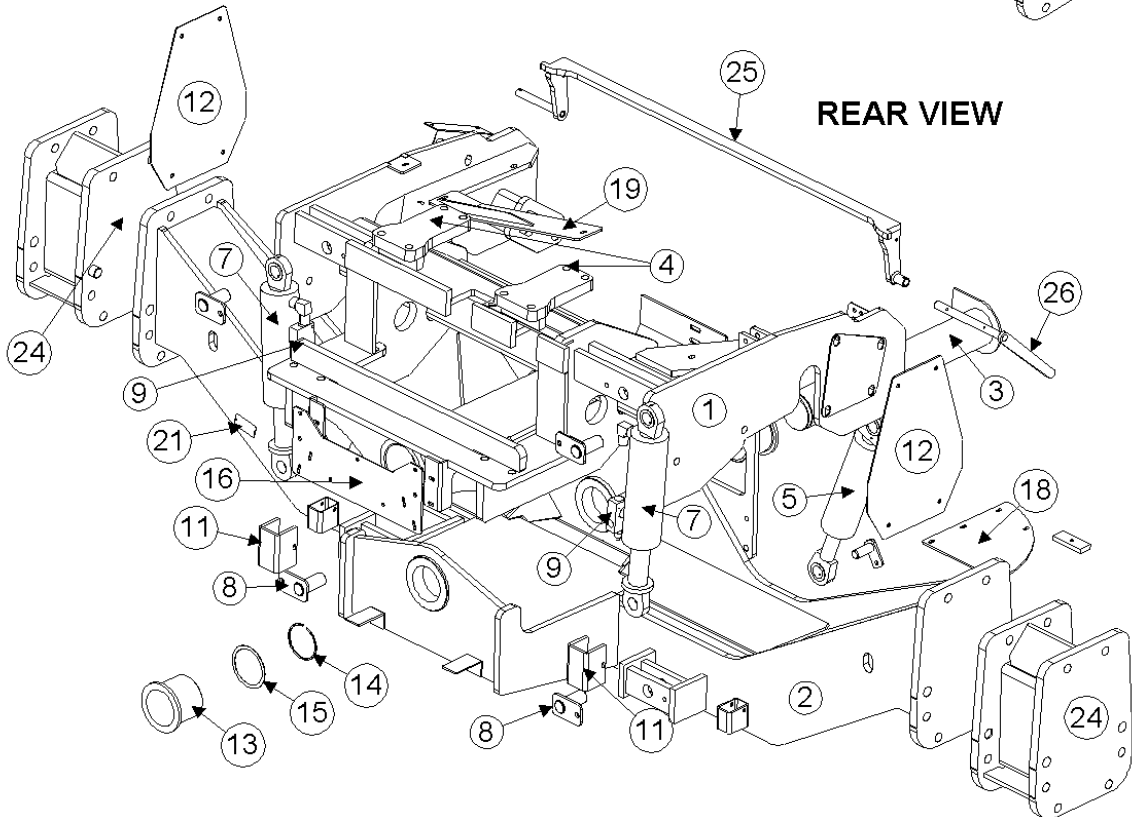
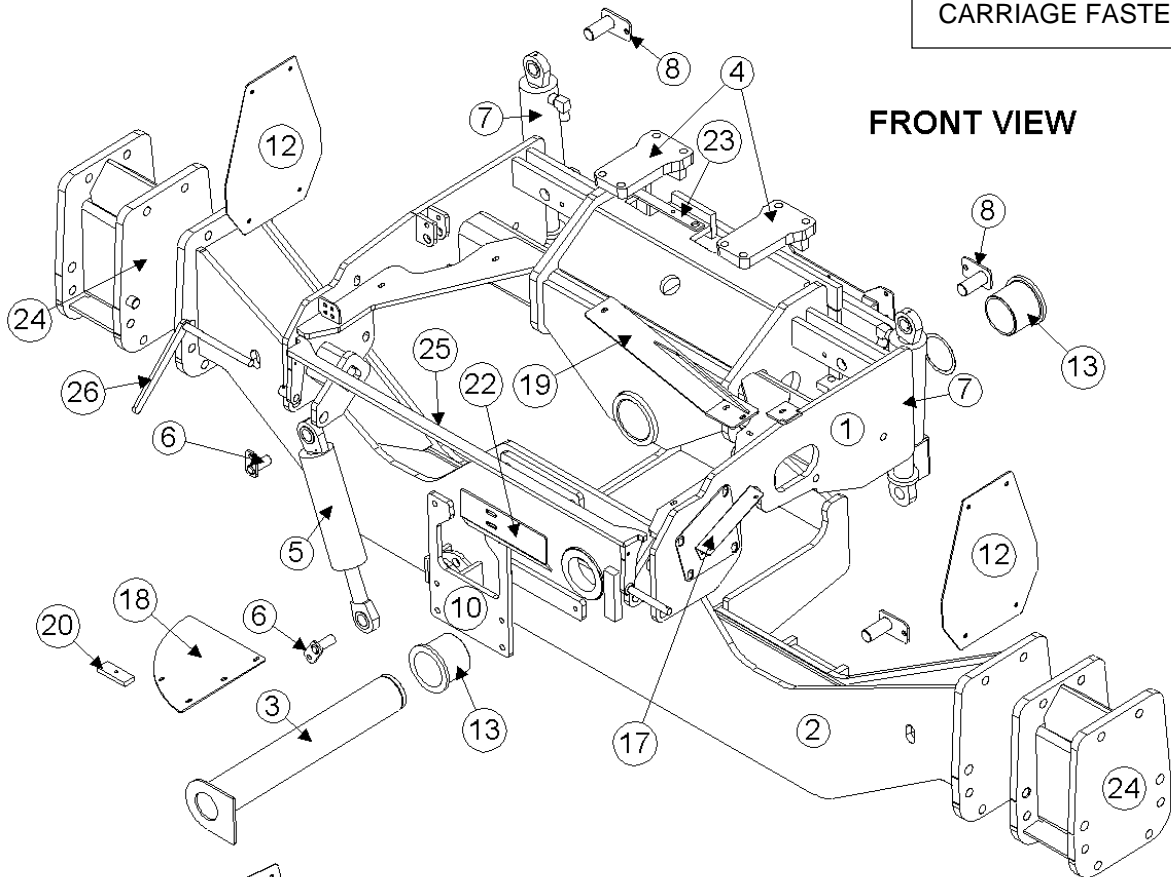


Model 2970S Hillco Leveling System
For Serial Numbers 2970S-1201 thru 2970S-1299

TRANSITION FASTENERS				
REF.	PART NO.	QTY.	PART NAME	WHERE USED
A	F-HC-10M070E	2	HC-10.9 M10 X 1.5 X 70	HEADER LOCK PINS
B	F-HC-16M120E	1	HC-10.9 M16 X 2.00 X 120	MAIN PIVOT PIN COLLAR
B	F-HNS-16ME	1	HN-10.9 M16 X 2.00 STV	MAIN PIVOT PIN COLLAR
C	F-MB-14NR40	4	MACH BUSH 14 GA NR 2-1/2 ID	MAIN PIVOT PIN
D	F-FHS-8M030E	17	FHSC-10.9 M8 X 1.25 X 30	UHMW FACE PLT
D	F-HNS-8ME	17	HN-10.9 M8 X 1.25 STV	UHMW FACE PLT
E	F-HCF-12M040E	6	FLHC-10.9 M12 X 1.75 X 40	BACKING PLATES
F	F-HNS-16ME	3	FLHN-10.9 M16 X 2.00	SL CYL ROD MNT
F	F-HCF-16M040E	3	FLHC-10.9 M16 X 2.00 X 40	SL CYL ROD MNT
G	F-HCF-12M040E	2	FLHC-10.9 M12 X 1.75 X 40 PLT	SLAVE CYLINDER MNT PIN
G	F-HNS-12ME	2	HN-10.9 M10 X 1.50 STV	SLAVE CYLINDER MNT PIN
H	F-HCF-8M020E	12	FLHC- 10.9 M8 X 1.25 X 20	SHIELDS
H	F-HNF-08ME	12	FLHN-10.9 M8 X 1.25	SHIELDS
I	F-CB-16M050E	10	CARR-10.9 M16 X 2.00 X 50	CONNECTS FRONT & REAR THROATS
I	F-HNF-16ME	10	FLHN-10.9 M16 X 2.00	CONNECTS FRONT & REAR THROATS
I	MC-143641	12	FW 17.5 X 56 X 5MM	CONNECTS FRONT & REAR THROATS; DRILLED HOLE
J	F-CB-16M050E	4	CARR-10.9 M16 X 2.00 X 50	REAR THROAT TO FEEDERHOUSE
K	F-HCF-16M040E	2	FLHC-10.9 M16 X 2.00 X 40	TRANSITION PIVOT BOLTS
K	MC-143641	2	FW 17.5 X 56 X 5MM	TRANSITION PIVOT BOLTS
L	F-HNF-16ME	4	FLHN-10.9 M16 X 2.00 NUT	HEADER TOP SPACER PLATES
M	F-PCT-02X16	2	PIN COTTER 1/8 X 1	PINS FOR FEEDER DRUM ARMS
N	F-HC-16M050E	2	HC-10.9 M16 X 2.0 X 50	DRILLED HOLE TRANSITION TO FEEDERHOUSE
N	F-HNF-16ME	2	FLHN-10.9 M16 X 2.00	DRILLED HOLE TRANSITION TO FEEDERHOUSE
O	F-CB-10M050F	7	CARR-8.8 M10 X 1.50 X 50	FLOOR HINGE
O	F-HNN-10MF	7	HN-8.8 M10 X 1.50 NYLOCK	FLOOR HINGE
P	F-HC-8M020E	8	HC-10.9 M8 X 1.25 X 20	FEEDER CHAIN SLATS TO CHAIN - JD PART NUMBER 19M7881
P	F-HNS-8ME	8	HN-10.9 M8 X 1.25 STV	FEEDER CHAIN SLATS TO CHAIN - JD PART NUMBER E64256

3 CARRIAGE

SEE PAGE 3-3 FOR
CARRIAGE FASTENERS

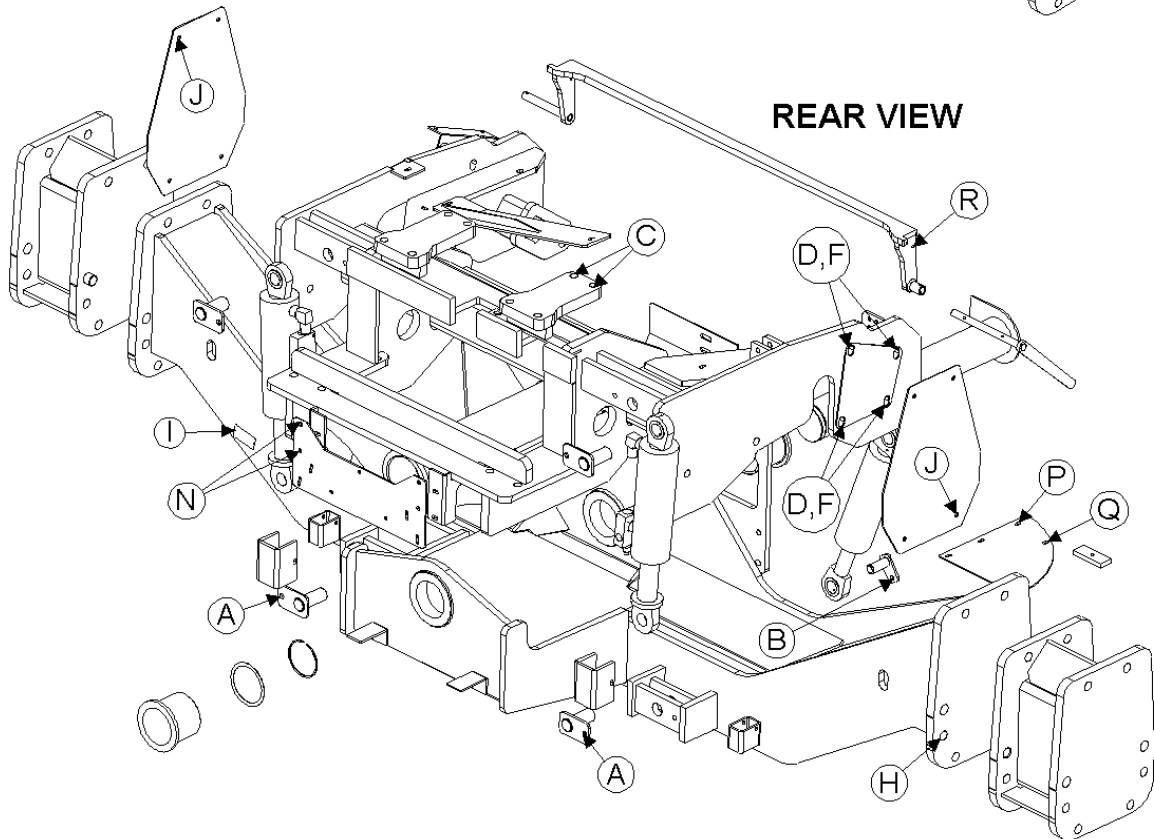
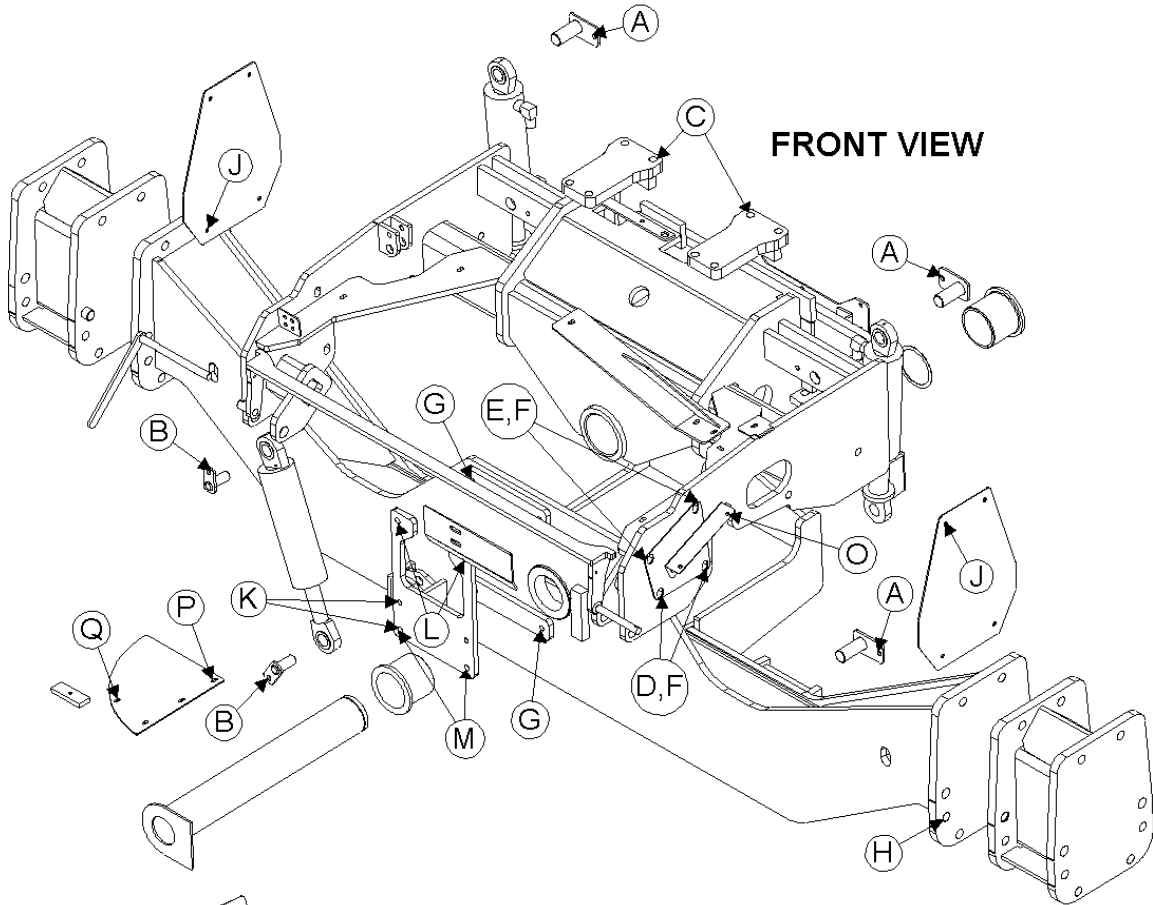


Model 2970S Hillco Leveling System
For Serial Numbers 2970S-1201 thru 2970S-1299

CARRIAGE COMPONENTS				
REF.	PART NO.	QTY.	PART NAME	NOTES
1	LA-247284	1	CO ASM	
2	LA-247093	1	CU ASM, WIDE	FOR COMBINES WITH DUAL TIRES
NS	LA-262021	1	CU ASM, NARROW	FOR COMBINES WITH SINGLE TIRES
3	LA-247482	1	CM ASM, MAIN PVT PIN	
4	LA-235711	2	CM PLATE ASM, TOP	
5	HC-140341	1	CYLINDER, MASTER	**SEE HYDRAULICS PAGE 6-2
6	LA-253882	2	LM ASM, PIN	
7	HC-140312	2	CYLINDER, MAIN LEVELING	**SEE HYDRAULICS PAGE 6-2
8	LA-230552	4	CM PIN ASM, MAIN CYLINDER	
9	HC-138901	2	VALVE, COUNTER BALANCE	**SEE HYDRAULICS PAGE 6-2
10	LM-260591	1	CM PLATE, TRANSMISSION MOUNT	
11	LP-252241	2	LM PLT, CYLINDER STOP	
12	LP-230241	2	CM CAP, AXLE	
13	LP-247961	2	CM BUSHING, PIVOT	
14	MC-138651	1	SNAP RING 4"	
15	MC-138641	1-4	WASHER 4.016ID X 4.764OD X .048	
16	LP-261431	1	EM PLATE, ELECTRICAL MOUNT	
17	LP-261531	1	HM SUPPORT, HDR LIFT CYL HOSE	
18	LP-261121	1	HM TABLE, HYDRO HOSE	
19	LA-261371	1	HM MOUNT ASM, HYDRO CLAMP	
20	LM-261091	3	HM FLAT, CLAMP SPACER	
21	LA-255961	1	TAG, SERIAL NUMBER	
22	LP-258221	1	SHIELD, SHIFT CABLE	
23	LM-248781	1	LM FLT, BRAKELINE BRKT	
REQUIRED ON 9660, 9760, & 9860 STS COMBINES THAT ARE EQUIPPED WITH CU ASM, NARROW (P/N LA-262021) IF COMBINE NEEDS TO BE CONVERTED TO DUAL TIRES				
24	LA-253131	2	LM ASM, 9.25 AXLE EXTENSION	
FOR COMBINES WITH SERIAL NUMBERS: 9660 STS (7201301-); 9760 STS (720401-); 9860 STS (720401-)				
ASM	LA-264171	1	LM, ASM, ROCK TRAP LINKAGE	
25	LA-264511	1	LM ASM, LINKAGE, ROCK TRAP	INCLUDED IN LA-264171
26	LA-264501	1	LM ASM, HANDLE, ROCK TRAP	INCLUDED IN LA-264171
MISCELLANEOUS CARRIAGE COMPONENTS AND FASTENERS				
NS	MC-142921	2	EMERGENCY BRAKE CABLE	
NS	MC-141551	1	CABLE, SHIFT	SUBS TO JOHN DEERE CABLE PART NUMBER AH128356
NS	F-HNN-8MF	2	HN-8.8 M8X1.25 NYLOCK	NUT, FOR BRAKE CABLE

Model 2970S Hillco Leveling System
For Serial Numbers 2970S-1201 thru 2970S-1299

CARRIAGE FASTENERS

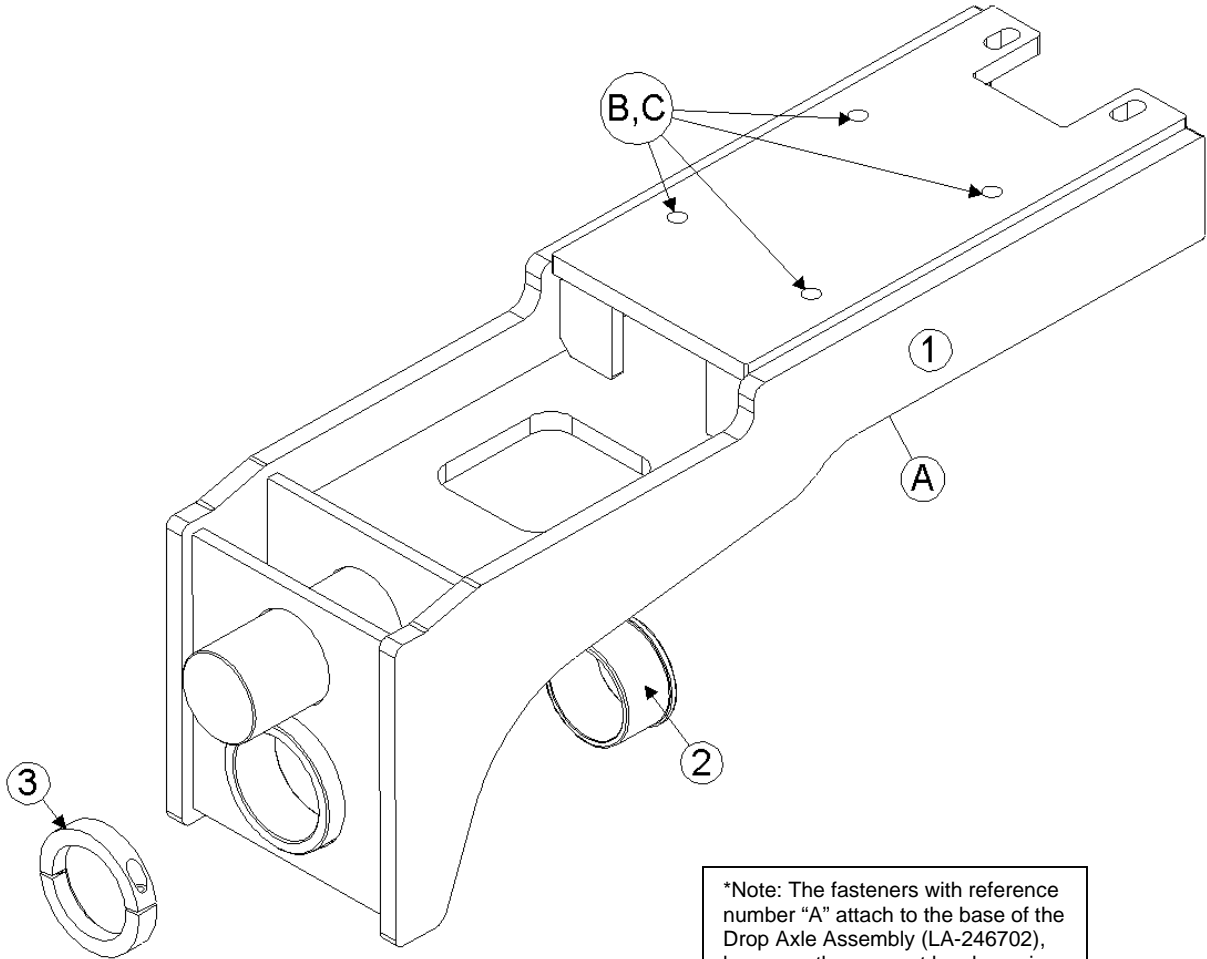


Model 2970S Hillco Leveling System
For Serial Numbers 2970S-1201 thru 2970S-1299

CARRIAGE FASTENERS				
REF.	PART NO.	QTY.	PART NAME	WHERE USED
A	F-HCF-12M040F	4	FLHC-8.8 M12 X 1.75 X 40	LEVELING CYL MNT PIN
A	F-HNS-12ME	4	HN-10.9 M12 X 1.75 STV	LEVELING CYL MNT PIN
B	F-HCF-12M035E	2	FLHC-10.9 M12 X 1.75 X 35 PLT	MASTER CYLINDER MNT PIN
B	F-HNS-12ME	2	HN-10.9 M12 X 1.75 STV	MASTER CYLINDER MNT PIN
C	F-HC8-12C240	8	HC8 3/4-10 X 15	OVERCARRIAGE CLAMP
C	F-HNS-12C	8	HN8 3/4-10 STV	OVERCARRIAGE CLAMP
D	F-HC-16M110E	6	HC-10.9 M16 X 2.00 X 110	OVERCARRIAGE FRONT RIGHT & BOTTOM LEFT
E	F-HC-16M120E	2	HC-10.9 M16 X 2.00 X 120	OVERCARRIAGE FRONT LEFT TOP
F	F-FWH-10	8	FW 5/8 HD	OVERCARRIAGE FRONT
G	F-HNF-16ME	4	FLHN-10.9 M16 X 2.00	BTM & TOP TRANSMISSION MNT HOLES
H	F-SHC-24M080E	4	SHCS 10.9-M24 X 3 X 80 ZINC	FINAL MOUNT
I	F-UDS-#7X06	2	SCREW, U-DRIVE #7 X 3/8	SERIAL NUMBER PLATE
J	F-HCF-10M040E	8	FLHC-8.8 M10 X 1.50 X 40	ORIGINAL AXLE COVER
J	F-HNF-10ME	8	FLHN-8.8 M10 X 1.50	ORIGINAL AXLE COVER
J	F-FWF-06020	8	3/8 FW FENDER X 1-1/4	ORIGINAL AXLE COVER
K	MC-143711	4	STUD, DOUBLE-ENDED-10.9 M16 X 2.00 X 75 20MM ONE END - 41MM OTHER END	LOWER TRANSMISSION MOUNTING HOLES ON PLATE & UNDERCARRIAGE
L	MC-143721	2	STUD, DOUBLE-ENDED-10.9 M16 X 2.00 X 90 18MM ONE END - 56MM OTHER END	UPPER TRANSMISSION MOUNTING HOLES ON UNDERCARRIAGE
M	F-HNF-16ME	2	FLHN-10.9 M16 X 2.00	LOWER STUDS THAT HOLD PLATE TO UC
N	F-HNF-08ME	4	FLHN-10.9 M8 X 1.25	ELECTRICAL BOX TO OC
N	F-HCF-8M020E	4	FLHC- 10.9 M8 X 1.25 X 20	ELECTRICAL BOX TO OC
O	F-HCF-8M020F	3	FLHC-10.9 M8 X 1.25 X 20	HOSE CLAMPS FOR HDR LIFT CYL HOSES
O	F-HNF-8MF	3	FLHN-10.9 M8 X 1.25	HOSE CLAMPS FOR HDR LIFT CYL HOSES
P	F-HCF-8M020E	2	FLHC-10.9 M8 X 1.25 X 20	HYDRO HOSE TABLE TO TRANSMISSION
Q	F-HCF-8M020E	1	FLHC-10.9 M8 X 1.25 X 20	CASE DRAIN HOSE
Q	F-HNF-08ME	2	FLHN-10.9 M8 X 1.25	CASE DRAIN HOSE
R	F-HC-06M035E	1	HC- 10.9 M6 X 1.0 X 35 PLT	ROCK TRAP
R	F-HNN-06MF	1	HN- 8.8 M6 X 1.0 NYLOCK	ROCK TRAP

Model 2970S Hillco Leveling System
For Serial Numbers 2970S-1201 thru 2970S-1299

4 DROP AXLE

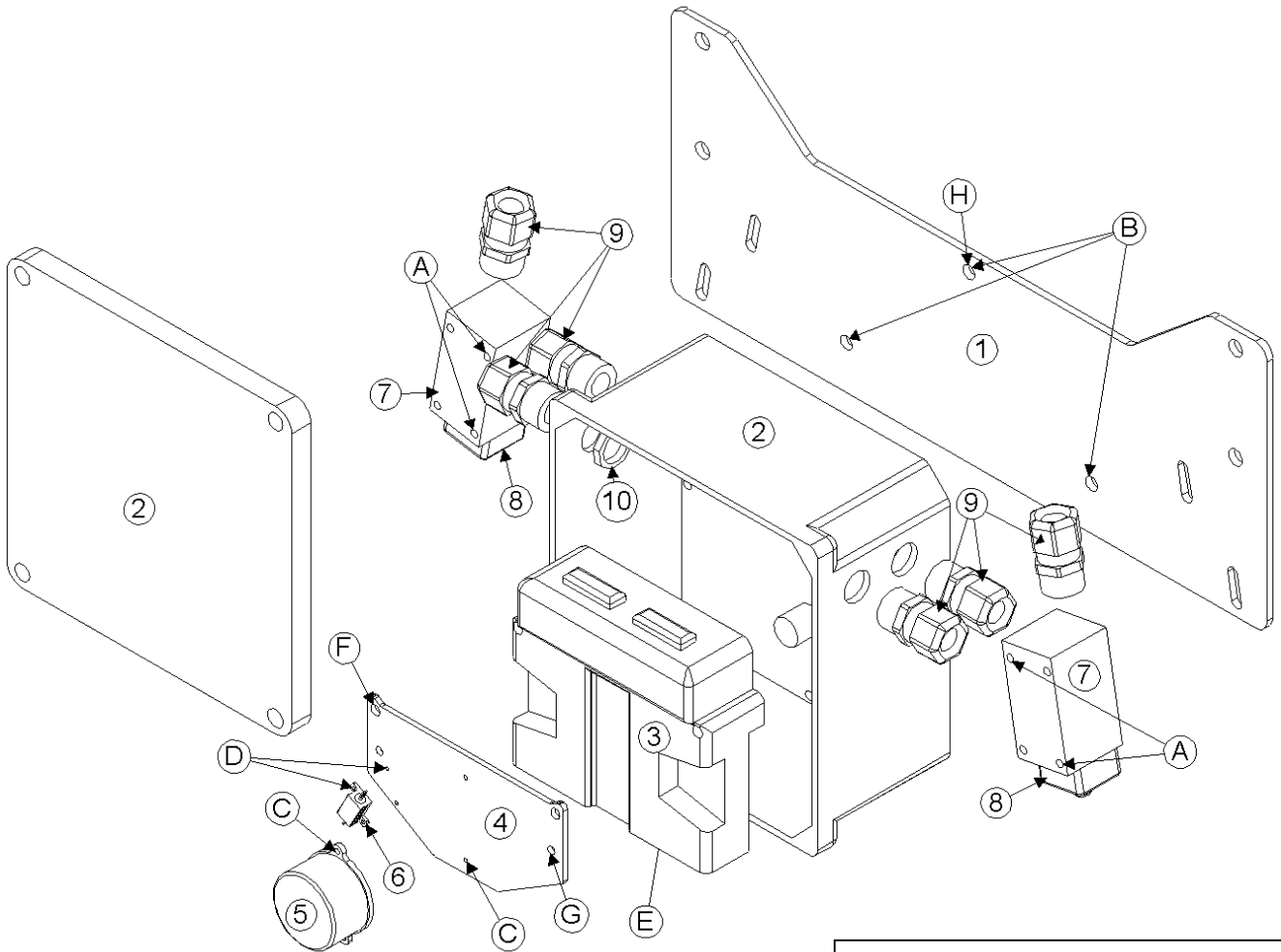


*Note: The fasteners with reference number "A" attach to the base of the Drop Axle Assembly (LA-246702), however, they cannot be shown in this view. The leader is pointing to the general area where they will be found.

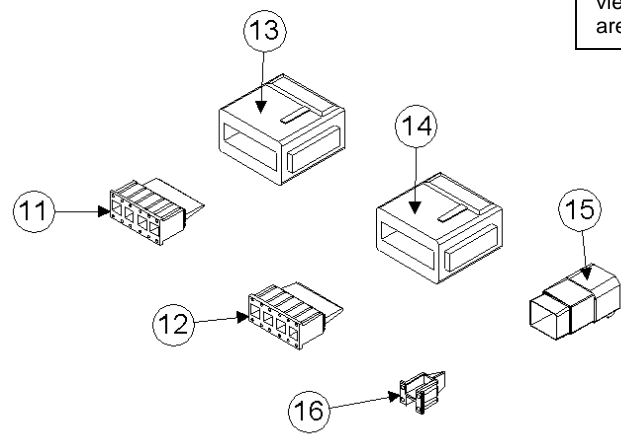
Model 2970S Hillco Leveling System
For Serial Numbers 2970S-1201 thru 2970S-1299

DROP AXLE COMPONENTS				
REF.	PART NO.	QTY.	PART NAME	NOTES
1	LA-246702	1	DA ASM	
2	LP-235092	1	LM BUSHING, DA PIVOT	
3	LM-263711	1	LM COLLAR, CLAMPING 3-1/2"X4-3/4"	
DROP AXLE FASTENERS				
REF.	PART NO.	QTY.	PART NAME	WHERE USED
A	F-HC-16M250E	4	HC-10.9 M16 X 2.00 X 250	
A	F-HNS-16ME	4	HN-10.9 M16 X 2.00 STV	
B	F-HC-16M060E	6	HC-10.9 M16 X 2.00 X 60	
B	F-HNS-16ME	10	HN-10.9 M16 X 2.00 STV	
C	F-FWH-10	10	FW 5/8 HARDENED	

5 ELECTRICAL BOX AND CONNECTORS



*Note: The fasteners with reference number "E" attach to the end of the Controller (EC-141831) however they cannot be seen in this view. The leader is pointing to the general area where they will be found.



**Note: Line item number '5' refers to a complete assembly. The complete assembly is not shown in this diagram. See page 5-3 for a picture of the complete assembly.

Model 2970S Hillco Leveling System
For Serial Numbers 2970S-1201 thru 2970S-1299

ELECTRICAL COMPONENTS				
REF.	PART NO.	QTY.	PART NAME	NOTES
FOR ALL COMBINES				
1	LP-261431	1	EM PLATE, ELECTRICAL MOUNT	
2	LM-255341	1	EM BOX, CONTROLLER MOUNT	
3	EC-141831	1	CONTROLLER	
4	LM-255331	1	EM SHT, CLINOMETER MOUNT	
5	LA-255821	1	EM ASM, CLINOMETER	<i>*SEE NOTE BELOW DIAGRAM</i>
6	EC-140822	1	RESISTOR, WIREWOUND, 100 OHMS	
7	EC-100557	2	BODY, LIMIT SWITCH	
8	EC-100692	2	HEAD, LIMIT SWITCH STRAIGHT PLUNGER	
9	EC-138781	6	STRAIN RELIEF, NYLON, BLK, 1/2 NPT	
10	EC-142121	4	STRAIN RELIEF NUT, 1/2" NYLON, BLK	
ELECTRICAL FASTENERS				
REF.	PART NO.	QTY.	PART NAME	WHERE USED
A	F-PHM-#10C28	4	PHMS 10-24 X 1-3/4	LIMIT SWITCH MNT
A	F-HNF-#10C	4	HN 10-24, FLNG SERR	LIMIT SWITCH MNT
B	F-HC5-04C12	3	HC5 1/4-20 X 3/4	PVC BOX MOUNTING
B	F-LW-04	3	LW 1/4	PVC BOX MOUNTING
C	F-PHM-#6C06	2	PHMS #6-32 X 3/8	CLINOMETER MNT TO ALUMINUM PLT
D	F-HN-#2C	2	HN #2-56	FASTEN RESISTOR TO ALUMINUM PLATE
D	F-PHM-#2C05	2	PHMS #2-56 X 5/16	FASTEN RESISTOR TO ALUMINUM PLATE
E	F-PHM-04C24	2	PHMS 1/4-20 X 1-1/2	CONTROLLER TO PVC BOX
E	F-HNF-04C	2	FLHN 1/4-20 SERR	CONTROLLER TO PVC BOX
F	F-PHM-04C36	2	PHMS 1/4-20 X 2-1/4	GROUNDING PLATE MOUNTING
F	F-HNF-04C	2	FLHN 1/4-20 SERR	GROUNDING PLATE MOUNTING
G	F-PHM-#10C16	2	PHMS 10-24 X 3/4	GROUNDING PLATE GROUND
G	F-HNF-#10C	2	HN5 10-24, FLNG SERR	GROUNDING PLATE GROUND
H	F-LWE-04	1	LW 1/4, EXTERNAL STAR	MAIN GROUND
ELECTRICAL CONNECTORS AND MISCELLANEOUS				
REF.	PART NO.	QTY.	PART NAME	NOTES
12	EC-141741	2	DTM SERIES, 12-SOCKET WEDGE	
13	EC-141761	1	DTM SERIES, 12-SOCKET PLUG GRAY	
14	EC-141751	2	DTM SERIES, 12-SOCKET PLUG BLACK	
15	EC-141791	1	DTM SERIES, 4-SOCKET PLUG	
16	EC-141801	1	DTM SERIES, 4-SOCKET WEDGE	
NS	EC-136701	1	PIN, AMP	
NS	EC-136711	1	AMP SOCKET	
NS	EC-100164	2	PIN, ELECTRICAL	
NS	EC-100165	2	SOCKET, SIZE 16 DEUTSCH	
NS	EC-133281	1	DIODE, 6 AMP, 50 PIV, SILICON	
NS	EC-139641	4	CONNECTOR, PARALLEL, 16-14 GA	
NS	EC-139631	3	CONNECTOR, PARALLEL, 12-10 GA	
NS	EC-140781	1	BULB, JD# AA2753	
NS	EC-140801	4	TERMINAL, JD# R104701	
NS	EC-140851	2	TERMINAL	
NS	ET-ST-20#10	8	TERMINAL, RING, #10, 20 GA, NON-INSULATED	
NS	ET-ST-2004	1	TERMINAL, RING, NON-INS, 1/4, 20 GA	
NS	EC-141771	24	DTM SERIES, SOCKET CONTACT, STAMPED	
NS	EC-141781	19	DTM SERIES, PIN CONTACT, STAMPED	
NS	EC-143261	2	DTM SERIES, 12-PIN RECEPTACLE W/ A-KEY	
NS	EC-145671	10	DTM, PLUG SEALING	
NS	EC-145651	1	SPADE, FEMALE, 3/16, 20 GA	

ELECTRICAL CABLES



#1 LA-255631
EM CABLE ASM, LIMIT



#2 LA-255821
EM ASM,
CLINOMETER



#3 LA-252462
EM CABLE ASM, MAX
LEVEL LIGHT



#4 LA-255643
EM ASM, BOX TO VALVE



#5 LA-255721 EM ALL
CABLE ASM, CAB TO
BOX, EARLY



#6 LA-255732
EM ALL CABLE ASM,
CAB TO BOX, LATE



#7 LA-263671 EM ALL
CABLE ASM, LEVELING
MANIFOLD



#8 LA-260242 EM CABLE
ASM, TRIM SIGNAL



#9 LA-263681 EM ALL
CABLE ASM, LEVELING
MANIFOLD



#10 LA-260222 EM CABLE
ASM, TRIM SIGNAL

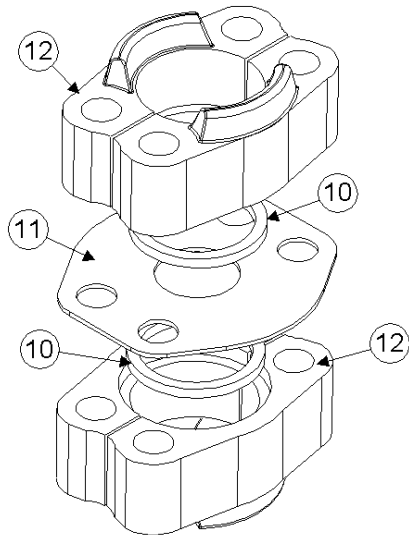
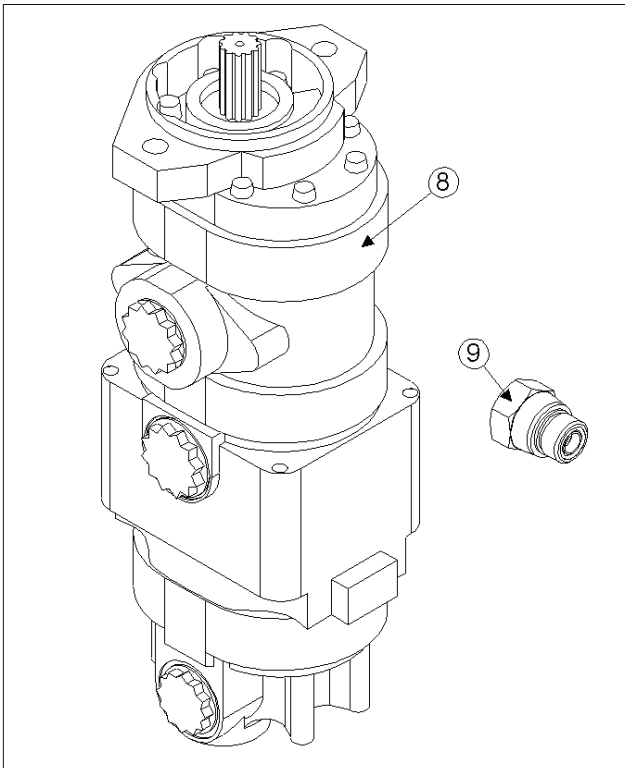
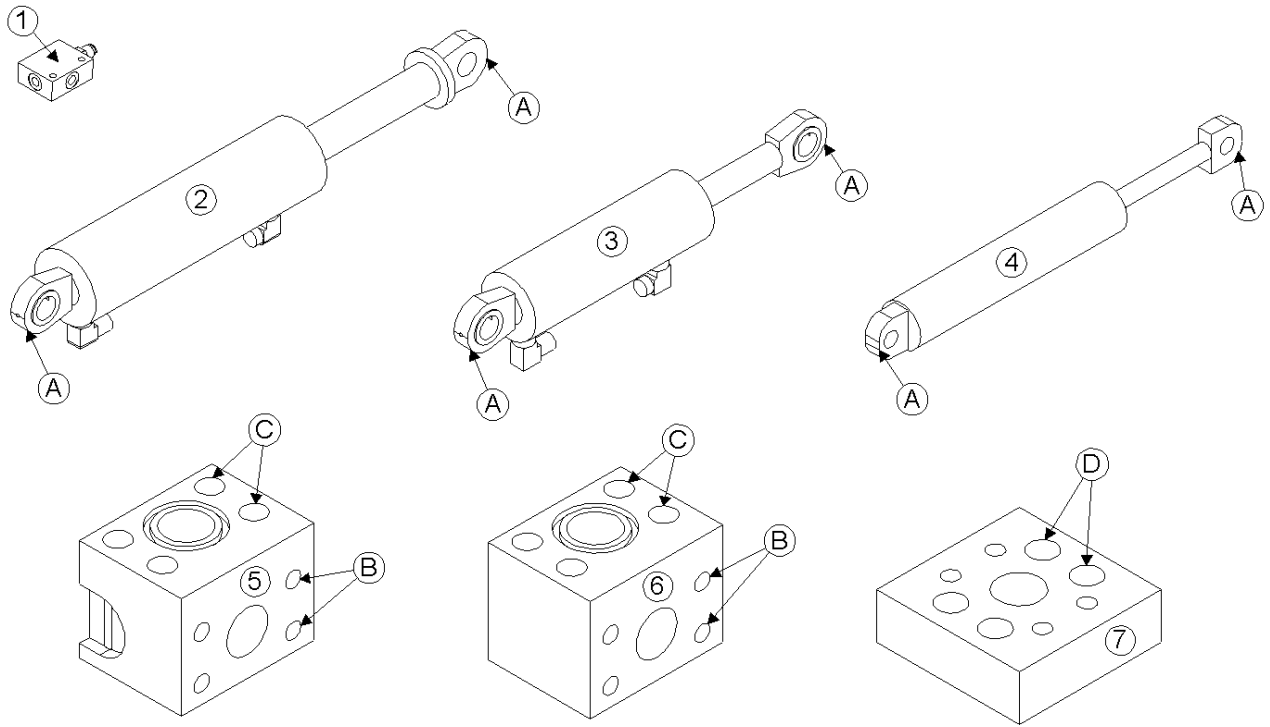


#11 LA-260272 EM
CABLE ASM, MANIFOLD

Model 2970S Hillco Leveling System
For Serial Numbers 2970S-1201 thru 2970S-1299

ELECTRICAL CABLE ASSEMBLIES				
REF.	PART NO.	QTY.	PART NAME	DESCRIPTION
ALL COMBINES				
1	LA-255631	2	EM CABLE ASM, LIMIT SWITCH	
2	LA-255821	1	EM CABLE ASM, CLINOMETER	
3	LA-252462	1	EM CABLE ASM, MAX LEVEL LIGHT	
4	LA-255643	1	EM CABLE ASM, BOX TO VALVE	
NS	LA-261691	1	EM ASM, DIAGNOSTIC CONNECTION	
FOR COMBINES WHICH FALL WITHIN THE FOLLOWING SERIAL NUMBER BREAKS: 9650STS (-695500); 9750STS (-695600)				
5	LA-255721	1	EM ALL CABLE ASM, CAB TO BOX, EARLY	
..	LA-252482	1	EM CABLE ASM, CAB TO BOX	INCLUDED IN LA-255721
..	LA-252462	1	EM CABLE ASM, MAX LEVEL LIGHT	INCLUDED IN LA-255721
FOR COMBINES WHICH FALL WITHIN THE FOLLOWING SERIAL NUMBER BREAKS: 9650STS (695501-); 9750STS (695601-); 9660STS (705501-); 9760STS (705601-); 9860STS (705701-)				
6	LA-255732	1	EM ALL CABLE ASM, CAB TO BOX, LATE	
..	LA-252473	1	EM CABLE ASM, CAB TO BOX	INCLUDED IN LA-255732
..	LA-252462	1	EM CABLE ASM, MAX LEVEL LIGHT	INCLUDED IN LA-255732
FOR COMBINES WHICH FALL WITHIN THE FOLLOWING SERIAL NUMBER BREAKS: 9650STS (ALL); 9750STS (ALL); 9660STS (-715400); 9760STS (-715500); 9860STS (-715600)				
7	LA-263671	1	EM ALL CABLE ASM, LEVELING MANIFOLD	
..	LA-263611	1	EM CABLE ASM, LEVELING MANIFOLD	INCLUDED IN LA-263671
..	LA-263601	1	EM CABLE ASM, DUMP SIGNAL	INCLUDED IN LA-263671
8	LA-260242	1	EM CABLE ASM, TRIM SIGNAL	
FOR COMBINES WHICH FALL WITHIN THE FOLLOWING SERIAL NUMBER BREAKS: 9660STS (715401-); 9760STS (715501-); 9860STS (715601-)				
9	LA-263681	1	EM ALL CABLE ASM, LEVELING MANIFOLD	
..	LA-263611	1	EM CABLE ASM, LEVELING MANIFOLD	INCLUDED IN LA-263681
..	LA-263621	1	EM CABLE ASM, DUMP SIGNAL	INCLUDED IN LA-263681
10	LA-260222	1	EM CABLE ASM, TRIM SIGNAL	
NORTHWEST OPTION				
11	LA-260272	1	EM CABLE ASM, MANIFOLD	
..	LA-263591	1	EM CABLE ASM, LEVELING MANIFOLD	INCLUDED IN LA-260272
..	LA-260292	1	EM CABLE ASM, RWA SIGNAL	INCLUDED IN LA-260272

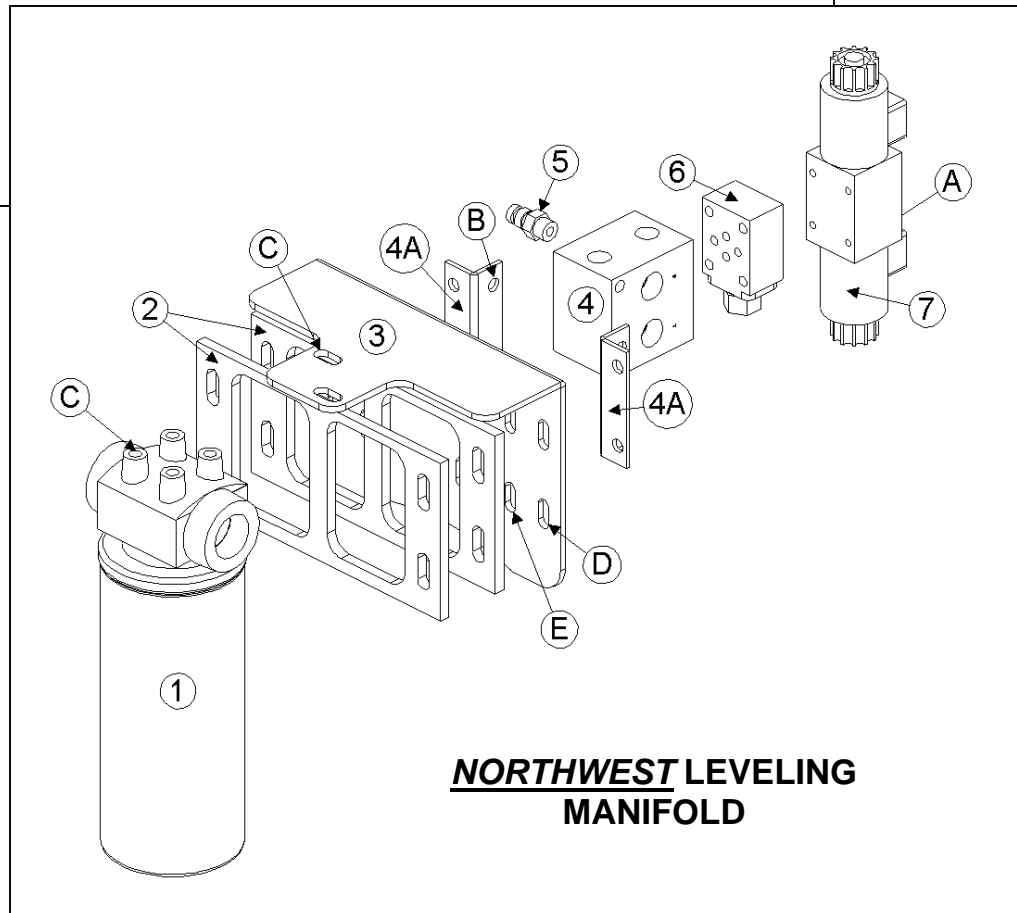
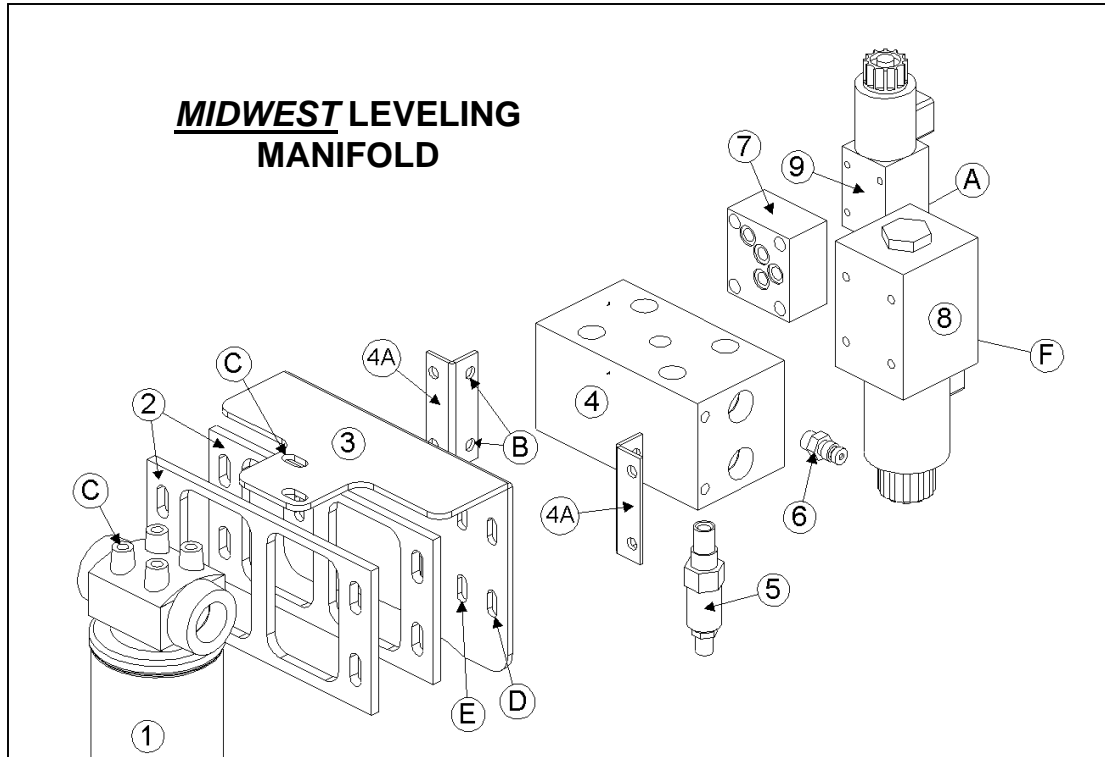
6 HYDRAULICS



Model 2970S Hillco Leveling System
For Serial Numbers 2970S-1201 thru 2970S-1299

HYDRAULIC COMPONENTS & FASTENERS				
REF.	PART NO.	QTY.	PART NAME	NOTES
1	HC-138901	2	VALVE, COUNTER BALANCE	
..	HC-139161	2	CARTRIDGE, COUNTER BALANCE VALVE	
..	HC-139171	2	BODY, COUNTER BALANCE VALVE	
NS	HC-140361	2	SEAL KIT, COUNTER BALANCE VALVE	
2	HC-140312	2	CYLINDER, MAIN LEVELING	
NS	HC-142451	2	SEAL KIT, MAIN LEVELING CYLINDER	
3	HC-140341	1	CYLINDER, MASTER	
NS	HC-134201	1	SEAL KIT, MASTER CYLINDER	
4	HC-138581	1	CYLINDER, SLAVE	
NS	HC-141281	1	SEAL KIT, SLAVE CYLINDER	
5	LM-261081	1	HM BLOCK, CODE 62 90°	MOUNTS TO BOTTOM PORT ON HYDRO MOTOR
6	HC-143361	1	CODE 62/CODE 62 ELBOW	MOUNTS TO TOP PORT ON HYDRO MOTOR
7	HC-143371	1	CODE 62 90° ROTATIONAL ADAPTER	MOUNTS TO BOTTOM PORT ON HYDRO MOTOR
8	HC-143101	1	HYDRAULIC PUMP, HILLMASTER, TRIPLE M	JD PART NUMBER AH212540
9	LA-263651	1	HM ORIFICE ASM, PUMP ASM	
A	F-SSS-04F04	8	SCREW, SOCKET SET 1/4-28 X 1/4	ALL CYLINDERS
B	F-HC8-07C24	8	HC8 7/16-14 X 1-1/2	CODE 62 SPLT FLANGE
C	F-HC8-07C52	8	HC8 7/16-14 X 3-1/4	THESE FASTENERS COME WITH ELBOWS
C	F-LWH-07	8	LW 7/16 HD	THESE FASTENERS COME WITH ELBOWS
D	F-SHC-07C20	4	SHCS 7/16-14 X 1-1/4	THESE FASTENERS COME WITH ROTATIONAL ADAPTER
D	F-LWHC-07	4	LW 7/16 HD HIGH COLLAR	THESE FASTENERS COME WITH ROTATIONAL ADAPTER
CODE 62 SPLIT FLANGE CONNECTOR KIT ASSEMBLY				
ASM	HC-101843	2	ASM, CODE 62 SLT FLNG CONNECTOR KIT WITH O-RINGS	FWD AND REVERSE PROPULSION HOSE
ONE HC-101843 KIT INCLUDES:				
10	HC-134911	3	O-RING, CODE 62 CONNECTOR	
11	HC-137891	1	PLATE, CODE 62	
12	HC-137901	2	CODE 62, #16 SPLIT FLANGE KIT (PAIR)	
NS	F-HC8-07C44	4	HC8 7/16 X 2-3/4	
NS	F-HN8-07C	4	HN8 7/16-14	

HYDRAULIC LEVELING MANIFOLD

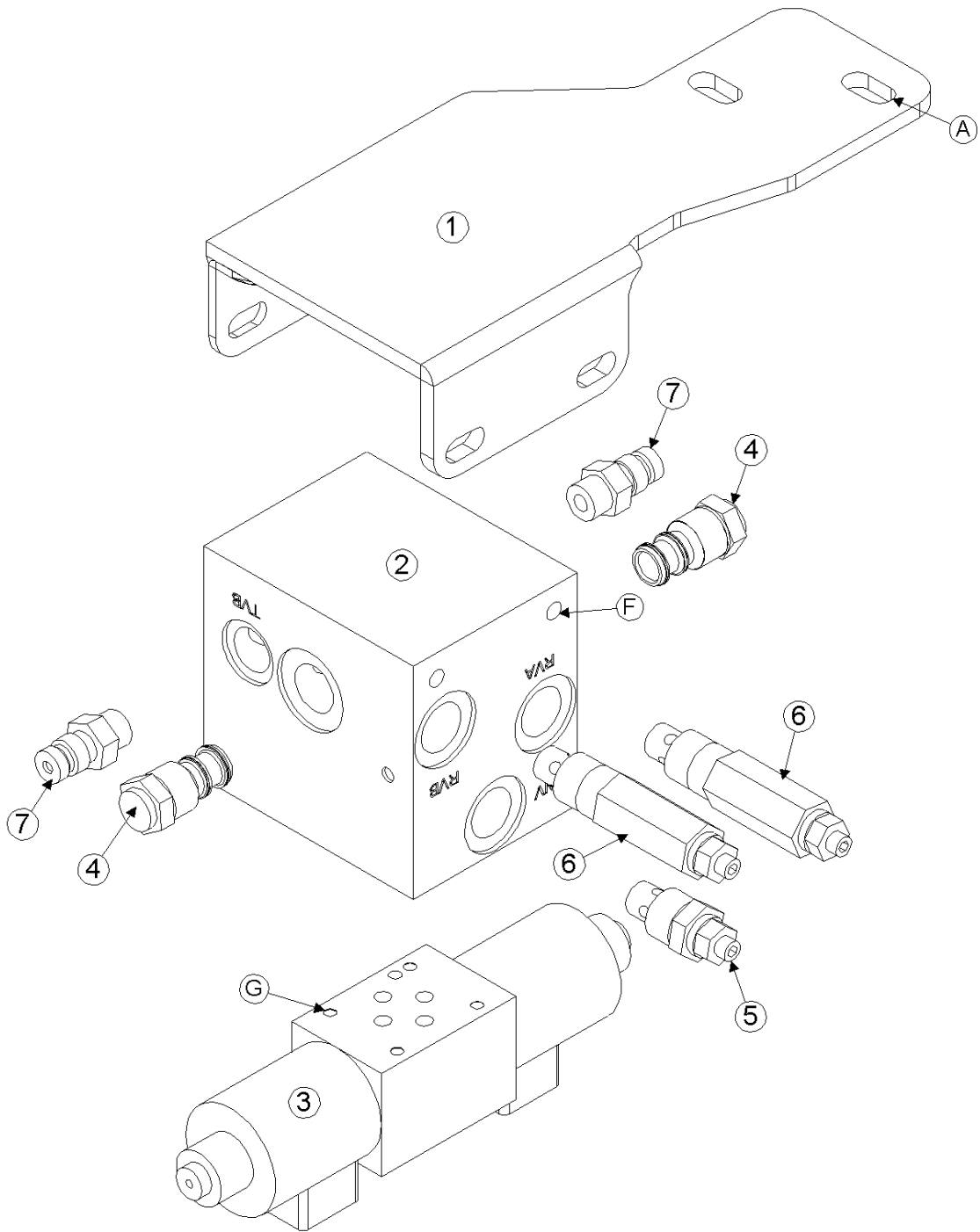


**Note: Be sure you are looking at the correct manifold drawing as well as the correct description of parts on the page to the right.

Model 2970S Hillco Leveling System
For Serial Numbers 2970S-1201 thru 2970S-1299

LEVELING MANIFOLD COMPONENTS FOR <i>MIDWEST</i> COMBINES				
REF.	PART NO.	QTY.	PART NAME	NOTES
ASM	LA-263261	1	MANIFOLD ASM, LEVELING	FOR MIDWEST COMBINES
1	HC-143441	1	FILTER ASM, OIL	RETURN LINE TO TANK
2	LP-263321	2	PLATE, BACKING	
3	LP-263311	1	HM PLT, MANIFOLD MNT	
4	HC-143981	1	DO5 MANIFOLD, 2-STATION W/ RELIEF CAVITY	
4A	..	2	BRACKETS, MANIFOLD	INCLUDED WITH HC-143981
5	HC-142991	1	CARTRIDGE, PRESSURE RELIEF	MANIFOLD HOUSING; SET AT 2800 PSI
6	HC-143991	1	HYDRAULIC QUICK-CONNECT COUPLER	JD PART NUMBER AH125760
7	HC-143001	1	ADAPTER, D03/D05 VALVE	LEVELING AND TRIM SECTIONS OF MAN
8	HC-143071	1	VALVE, D05 SOFT SHIFT DUMP	MIDDLE STATION ON MANIFOLD
9	HC-140411	1	VALVE, DIRECTIONAL CONTROL, PROPORTIONAL	LEVELING PORTION OF MANIFOLD
LEVELING MANIFOLD COMPONENTS FOR <i>NORTHWEST</i> COMBINES				
REF.	PART NO.	QTY.	PART NAME	NOTES
ASM	LA-249684	1	MANIFOLD ASM, LEVELING	FOR NORTHWEST COMBINES
1	HC-143441	1	FILTER ASM, OIL	RETURN LINE TO TANK
2	LP-263321	2	PLATE, BACKING	
3	LP-263311	1	HM PLT, MANIFOLD MNT	
4	HC-138861	1	MANIFOLD, SINGLE STATION	
4A	..	2	BRACKETS, MANIFOLD	
5	HC-143991	1	HYDRAULIC QUICK-CONNECT COUPLER	JD PART NUMBER AH125760
6	HC-101264	1	LOAD SENSE SHUTTLE ASM	
7	HC-140411	1	VALVE, DIRECTIONAL CONTROL, PROPORTIONAL	
LEVELING MANIFOLD FASTENERS - BOTH <i>MIDWEST</i> & <i>NORTHWEST</i> COMBINES				
REF.	PART NO.	QTY.	PART NAME	WHERE USED
A	F-SHC-#10C52	4	SHCS 10-24 X 3-1/4	LEVELING SECTION OF MANIFOLD
A	F-LW-#10	4	LW #10	LEVELING SECTION OF MANIFOLD
B	F-HCF-05C08	8	FLHC 5/16-18 X 1/2	MANIFOLD TO MANIFOLD MOUNT
C	F-HCF-10M020E	2	FLHC-10.9 M10 X 1.50 X 20	FILTER HOUSING TO MOUNTING BRACKET
D	F-HCF-08M035E	4	FLHC-10.9 M8 X 1.25 X 35	MOUNTING BRACKET TO CHASSIS
D	F-HNF-8ME	4	FLHN-10.9 M8X1.25	MOUNTING BRACKET TO CHASSIS
E	F-HNF-05F	4	FLHC 5/16-18	MANIFOLD MOUNT TO MOUNTING BRACKET
<i>MIDWEST COMBINES ONLY</i>				
F	F-SHC-04C28	4	SHCS 1/4-20 X 1-3/4	DUMP VALVE ON MANIFOLD

Model 2970S Hillco Leveling System
For Serial Numbers 2970S-1201 thru 2970S-1299
HYDRAULIC TRIM MANIFOLD



Model 2970S Hillco Leveling System
For Serial Numbers 2970S-1201 thru 2970S-1299

TRIM MANIFOLD COMPONENTS				
REF.	PART NO.	QTY.	PART NAME	NOTES
1	LA-263521	1	HM ASM, MOUNT (TRIM MANIFOLD)	
2	HC-145441	1	MANIFOLD, CUSTOM TRIM	
3	HC-143011	1	VALVE, DIRECTIONAL CONTROL, BANG/BANG	
4	HC-145431	2	RELIEF, POPPET DIRECT ACTING	SET AT 1800 PSI
5	HC-145501	1	VALVE, NEEDLE	
6	HC-145511	2	PILOT OPERATED CHECK	
7	HC-143991	2	HYDRAULIC QUICK-CONNECT COUPLER AH125760	
TRIM MANIFOLD FASTENERS				
REF.	PART NO.	QTY.	PART NAME	WHERE USED
A	F-HCF-10M030E	2	FLHC 10.9 M10 X 1.50 X 30 PLT	TRIM MANIFOLD MOUNT
A	F-HNF-10ME	2	FLHN-10.9 M10 X 1.50 PLT	TRIM MANIFOLD MOUNT
B	F-HCF-05C08	8	FLHC 5/16-18 X1/2	MANIFOLD TO MANIFOLD MOUNT
C	F-SHC-#10C32	4	SHCS 10-24 X 2	DIRECTIONAL CONTROL TO MANIFOLD
C	F-LW-#10	4	LW #10	DIRECTIONAL CONTROL TO MANIFOLD

Model 2970S Hillco Leveling System
For Serial Numbers 2970S-1201 thru 2970S-1299

HYDRAULIC HOSES

REF.	PART NO.	QTY.	PART NAME	WHERE USED
LEVELING HOSES				
NS	LA-138981	2	3/8" 100R2 59" #6 FORS X #6 FORS	LEFT OR RIGHT POCV#2 TO RIGHT/LEFT ROD FRONT
NS	LA-141093	2	1/4" 100R2 5-7/8" #6 FORS X #6 FORS 90°	LEFT OR RIGHT POCV#3 TO RIGHT/LEFT ROD REAR
NS	LA-263541	1	1/2" 100R2 252" #8 FORS X #6 FORS	LEVELING VALVE PORT "A" TO LEFT MAIN LEV ROD
NS	LA-263551	1	1/2" 100R2 252" #8 FORS X #6 FORS 90°	LEVELING VALVE PORT "B" TO LEFT MAIN LEV CYL POCV #2
TRIM MANIFOLD HOSES				
NS	LA-143472	1	1/4" 100R2 100" #4 FORS X #4 FORS	MASTER BASE TO TEE THAT CONNECTS TO HOSE LA-139132
NS	LA-143482	1	1/4" 100R2 111" #4 FORS X #4 FORS	MASTER ROD TO TEE THAT CONNECTS TO HOSE LA-139122
NS	LA-139122	1	1/4" 100R2 233" #4 FORS X #4 FORS	SLAVE ROD TO TEE CONNECTED TO HOSE LA-143481
NS	LA-139132	1	1/4" 100R2 245" #4 FORS X #4 FORS	SLAVE BASE TO TEE CONNECTED TO HOSE LA-143471
NS	LA-139113	1	1/4" 100R2 54" #4 FORS X #4 FORS	TRIM PORT "A" TO TEE CONNECTED TO HOSE LA-143481
NS	LA-139113	1	1/4" 100R2 54" #4 FORS X #4 FORS	TRIM PORT "B" TO TEE CONNECTED TO HOSE LA-143471
FOR COMBINES WHICH FALL WITHIN THE FOLLOWING SERIAL NUMBER BREAKS: 9650STS (ALL); 9750STS (ALL); 9660STS (-715400); 9760STS (-715500); 9860STS (-715600)				
NS	LA-145751	1	1/2" 100R2 42" #8 FORS X #10 FORS	HIC TO "P" PORT OF TRIM MAINFOLD
NS	LA-145761	1	1/2" 100R1 46" #8 FORS X #10 FORS	HIC TO "T" PORT OF TRIM MAINFOLD
FOR COMBINES WHICH FALL WITHIN THE FOLLOWING SERIAL NUMBER BREAKS: 9660STS (705401-); 9760STS (705501-); 9860 STS (705601-)				
NS	LA-263411	2	1/4" 100R2 55" #4 FORS X #4 FORS 90°	HIC TO P & T PORTS OF TRIM MAINFOLD
GREASE HOSES				
NS	LA-138942	1	3/16 R1 GREASE 33-1/2" 1/8 MPT X 1/8 MPT	MASTER BASE TO BH #4
NS	LA-138951	1	3/16 R1 GREASE 40" 1/8 MPT X 1/8 MPT	RH MAIN LEN CYL BASE TO BH #1
NS	LA-138962	1	3/16 R1 GREASE 61" 1/8 MPT X 1/8 MPT	MAIN PVT TO BH #3
NS	LA-138972	1	3/16 R1 GREASE 88-1/2" 1/8 MPT X 1/8 MPT	LH MAIN LEV CYL BASE TO BH #2
HYDRO HOSES				
NS	LA-140383	2	1 100R15 79" CODE 62 SPLT FLNG 90° SHORT DROP X CODE 62 SPLT FLNG STR	HYDROSTAT FRONT & REAR HOSES
NS	LA-140402	1	3/4 100R1 80" #12 MORS X #12 FORS	HYDRO MOTOR CASE DRAIN
NS	LA-263562	1	3/4" 100R1 30" #12 FORS X #12 FORS 45°	MANIFOLD "T" PORT TO FILTER HOUSING INLET
BRAKE HOSES				
NS	LA-130371	2	#4 TITE FLEX 31" #4 FORS X #4 FORS & #4 UNION	
NS	HA-133131	2	O-RING, TEFLON	
HEADER LIFT CYLINDER HOSES				
NS	LA-143791	1	1/2" 100R2 49" #8 FORS X #8 FORS	HEADER LIFT CYLINDERS
PUMP & MANIFOLD HOSES				
NS	LA-263531	1	3/4" 100R12 46" #10 FORS 90° X #12 FORS	PRESSURE HOSE FROM PUMP TO "P" PORT
NS	LA-263571	1	1" 100R1 36" #16 FORS X #16 FORS 90°	FILTER HOUSING OUTLET TO RESERVOIR
NS	LA-143681	1	1" 100R16 (1M2T) 42" #16 FORS X #16 FORS	SUCTION HOSE FROM RUN END OF BTM TEE TO PUMP

Model 2970S Hillco Leveling System
 For Serial Numbers 2970S-1201 thru 2970S-1299

HYDRAULIC HOSES (CONTINUED)

NORTHWEST OPTION HOSES				
NS	LA-145901	1	3/16 R1 GREASE 10" 1/8 MPT X 1/8 FPT	OHLA BREATHER
NS	HC-145861	1	1/2" HEATER HOSE 2-3/4" (NO ENDS) SAE20R3D2	IDLER ASM
NS	LA-263571	1	1" 100R1 HOSE 36" #16 FORS X #16 FORS 90°	RETURN LINE FROM FILTER OUTLET TO RESERVOIR
NS	LA-263562	1	3/4" 100R1 HOSE 30" #12 FORS X #12 FORS 45°	MANIFOLD "T" PORT TO FILTER INLET
NS	LA-134872	1	3/8" 100R1 HOSE 72" #6 FORS X #6 FORS 90°	PUMP CASE DRAIN TO RESERVOIR
FOR COMBINES WHICH FALL WITHIN THE FOLLOWING SERIAL NUMBER BREAKS: 9650STS (ALL); 9750STS (ALL); 9660STS (-715400); 9760STS (-715500); 9860STS (-715600)				
NS	LA-134822	1	1/4" 100R2 HOSE 63" #4 FORS X #4 FORS 90°	LOAD SENSE LINE
NS	LA-134832	1	3/4" 100R12 HOSE 54" #12 FORS X #12 FORS	PRESSURE FROM PUMP TO MANIFOLD
NS	LA-134862	1	1" 100R16 (1M2T) 71" #16 FORS X #16 FORS 90°	PUMP SUCTION
FOR COMBINES WHICH FALL WITHIN THE FOLLOWING SERIAL NUMBER BREAKS: 9660STS (705401-); 9760STS (705501-); 9860 STS (705601-)				
NS	LA-145721	1	1/4" 100R2 79" #4 FORS X #4 FORS 90°	LOAD SENSE LINE
NS	LA-145731	1	3/4" 100R12 70" #12 FORS X #12 FORS	PRESSURE FROM PUMP TO MANIFOLD
NS	LA-145741	1	1" 100R16 (1M2T) 62" #16 FORS X #16 FORS 90°	PUMP SUCTION

Model 2970S Hillco Leveling System
For Serial Numbers 2970S-1201 thru 2970S-1299

HYDRAULIC ADAPTERS

REF.	PART NO.	QTY.	PART NAME	WHERE USED
LEVELING MANIFOLD ADAPTERS				
NS	HA-L-12MF16MO	1	#16 MORB X #12 MORS 90°	INLET PORT ON FILTER HOUSING
NS	HA-L-16MF16MO	1	#16 MORB X #16 MORS 90°	OUTLET PORT ON FILTER HOUSING
NS	HA-S-12MF12MO	1	#12 MORB X #12 MORS STR	"T" PORT
NS	HA-L-8MF8MO	2	#8 MORB X #8 MORS 90°	"A" & "B" LEVELING PORTS
NS	HA-L-12MF12MO	1	#12 MORB X #12 MORS 90°	"P" PORT
NS	HA-E-8MO	2	#8 MORB SOCKET HEAD PLUG (ZERO-LEAK)	"A" & "B" PORTS UNDER DUMP VAVLE
NS	HA-E-12MO	2	#12 MORB SOCKET HEAD PLUG (ZERO-LEAK)	"T" & "P" PORTS
MAIN CYLINDER ADAPTERS				
NS	HA-K-6MF6MO	2	#6 MORB X #6 MORS BRANCH TEE	LEFT AND RIGHT LEV CYL ROD
NS	HA-L-6FF6MF	3	#6 FORS X #6 MORS 90°	LEFT AND RIGHT LEV CYL ROD
NS	HA-L-6FF6MF	1	#6 MORS X #6 FORS 90°	RIGHT LOWER POCV #2
NS	HA-L-6MF6MO	4	#6 MORS X #6 MORB 90°	POCV #2,#3 LEFT & RIGHT
NS	HA-L-6MO6MO	2	#6 MORB X #6 MORB 90°	POCV #1 LEFT AND RIGHT LEV CYL BASE
NS	HA-M-6FF6MF	2	#6 FORS X #6 MORS SWIVEL NUT RUN TEE	LEFT MAIN LEV CYL ROD/ LEFT POCV #2
MASTER & SLAVE CYLINDER ADAPTERS				
NS	HA-L-4MF6MO	2	#4 MORS X #6 MORB 90°	MASTER CYLINDER ROD AND BASE
NS	HA-L-4MF6MO	2	#4 MORS X #6 MORB 90°	SLAVE CYLINDER ROD AND BASE
GREASE FITTING ADAPTERS				
NS	HA-L-2FP2MP	1	1/8 NPT 90 STREET EL	MAIN PIVOT PIN
NS	HA-NJ-2FN	4	1/8" NPSM BULKHEAD LOCKNUT	BULKHEAD CONNECTOR
NS	HA-S-2FP2MN	4	1/8" NPSM X 1/8" FPT BULKHEAD CONNECTOR	GREASE BULKHEAD MOUNT
NS	HC-135771	3	1/4-28 MALE X 1/8 FPT 90°	MASTER CYLINDER BASE, MAIN LEV CYL BASE
NS	HC-138011	4	1/4-28 STRAIGHT ZERK	ALL GREASE LINES
TRIM MANIFOLD ADAPTERS				
NS	HA-L-4MF4MO	2	#4 MORB X #4 MORS 90°	"A" & "B" PORTS
NS	HA-S-8MF8MO	2	#8 MORS X #8 MORB STRAIGHT	"P" & "T" PORTS
EARLY SERIAL NUMBER ADAPTERS				
NS	HA-T-16MF16MO	2	#16 MORBX #16 MORS STR THREAD RUN TEE	PUMP SUCTION & RETURN AT RESERVIOR
NS	HA-S-16FF12MF	1	#16 FORS X #12 MORS REDUCER	COOLER TEE
NS	HA-L-10FF10MF	1	#10 FORS X #10 MORS 90°	RETURN OF STACK VALVE
NS	HA-M-10FF10MF	2	#10 ORS SWIVEL NUT RUN TEE	PRESSURE/RETURN STACK VALVE
LATE SERIAL NUMBER ADAPTERS				
NS	HA-L-16MF16MO	1	#16 MORB X #16 MORS 90°	SUCTION PORT (RES)
NS	HA-M-16FF16MF	2	#16 FORS X #16 MORS SWIVEL NUT RUN TEE	SUCTION PORT (RES)
NS	HA-S-4MF4MO	1	#4 MORB X #4 MORS STRAIGHT	HIC MANIFOLD
NS	HA-L-4MF4MO	1	#4 MORB X #4 MORS 90°	HIC MANIFOLD
NS	HA-S-8FF4MF	2	#8 FORS X #4 MORS REDUCER	P/T TRIM MANIFOLD
COMMON ADAPTERS				
NS	HA-L-8MF8MO	1	#8 MORS X #8 MORB 90°	RIGHT LIFT CYLINDER
NS	HA-Q-8MF8MO	1	#8 MORB X #8 MORS STR THREAD BRANCH TEE	LEFT LIFT CYLINDER
NS	HA-Y-4MF4MF	2	#4 MORS UNION TEE	SLAVE/MASTER UNION

Model 2970S Hillco Leveling System
 For Serial Numbers 2970S-1201 thru 2970S-1299

HYDRAULIC HOSES (CONTINUED)

NORTHWEST OPTION ADAPTERS				
NS	HA-E-10MO	1	#10 MORB SOCKET HEAD PLUG (ZERO-LEAK)	"T" PORT
NS	HA-L-12MF10MO	1	#10 MORB X #12 MORS 90°	"P" PORT
NS	HA-S-12MF10MO	1	#10 MORB X #12 MORS STR	"T" PORT
NS	HA-L-8MF8MO	2	#8 MORB X #8 MORS 90°	"A" & "B" LEVELING PORTS
NS	HA-L-4MF4MO	1	#4 MORB X #4 MORS 90°	LOAD SENSE SHUTTLE
NS	HA-S-6FO10MO	1	#6 FORB X #10 MORB STR	"P" PORT
NS	HA-T-6MF6MO	1	#6 MORS X #6 MORB STR THREAD RUN TEE	CASE DRAIN
NS	HA-C-6FF	1	#6 FORS CAP	CASE DRAIN
MIDWEST OPTION ADAPTERS				
NS	HA-L-16MF16MO	1	#16 MORB X #16 MORS 90°	SUCTION PORT PUMP
NS	HA-M-10MF10MO	1	#10 MORS X #10 MORB STR THREAD RUN TEE	PRESSURE PORT
NS	LA-263651	1	HM ORIFICE ASM, PUMP ASM	MIDDLE LEG OF TEE

Model 2970S Hillco Leveling System
For Serial Numbers 2970S-1201 thru 2970S-1299

7 MISCELLANEOUS

DECALS AND LITERATURE				
REF.	PART NO.	QTY.	PART NAME	DESCRIPTION
NS	LL20-100782	1	CAUTION LEVELING SYSTEM CAB	WINDOW IN CAB
NS	LL20-100783	2	DANGER - CRUSHING HAZARD	ON SIDES OF DA ASM
NS	LL20-100784	2	DECAL, DANGER PINCH POINT	RH & LH UPPER TRANS FACE PLT
NS	LL20-100786	1	WARNING ELECTRONIC CRUSHING HAZARD	FRONT OF CONTROL BOX
NS	LL20-100787	1	CAUTION - LEVELING SYSTEM HAZARD	ON LADDER PLATFORM
NS	LL20-100788	1	DANGER - HYDRAULIC HAZARD	ON SIDE OF COMBINE ABOVE THE HYDRAULIC MANIFOLD
NS	LL20-100788	0	DANGER - HYDRAULIC HAZARD	1 - EACH MAIN CYLINDER
NS	LL-133741	1	LABEL, GREASE 50 HRS	OC BULKHEAD
NS	LL-133741	2	LABEL, GREASE 50 HRS	MAIN LEV CYL BOTTOM (RH & LH)
NS	LL-133741	1	LABEL, GREASE 50 HRS	MASTER CYLINDER ROD
NS	LL-141301	2	DECAL, SIDEHILL LEVELING SYSTEM	SIDE OF COMBINE
NS	LL-143621	2	DANGER, AVOID CRUSHING INJURY	IN AREA NEAR SAFETY STOP STORAGE LOCATION
NS	LA-255961	1	TAG, SERIAL NUMBER	
NS	D-070326ADL01A	1	MANUAL, PARTS	
NS	D-060609SGD01	1	MANUAL, OPERATORS	
HOSE CLAMPS AND FASTENERS				
NS	MC-137521	3	TANDEM CLAMPING HALVES BEHRINGER (PAIR)	HYDROSTAT HOSES
NS	MC-137531	3	COVER PLATE W/ 5/16 HOLE (BEHRINGER)	HYDROSTAT HOSES
NS	F-HCF-08M090F	2	FLHC-8.8 M8 X 1.25 X 90	BEHRINGER CLAMP FOR HYDRO HOSES
NS	F-HNF-08ME	5	FLHN-10.9 M8 X 1.25	BEHRINGER CLAMP FOR HYDRO HOSES
NS	F-HC-08M100F	2	HC-8.8 M8 X 1.25 X 100	BEHRINGER CLAMP FOR HYDRO HOSES
NS	F-HC-08M120F	1	HC-8.8 M8 X 1.25 X 120	BEHRINGER CLAMP FOR HYDRO HOSES
NS	MC-135631	2	CLAMP, HOSE 1-1/2 R/C W 3/8 HOLE	CLAMP, GREASE LINES/ TRIM HOSES
NS	HC-142061	1	SLEEVE, ABRASION,SHIFT CABLE 36"	SLEEVE, ABRASION, SHIFT CABLE
NS	HC-139221	2	CLAMP, 1/4" TUBE TANDEM (PAIR)	BRAKE LINES
NS	HC-139231	4	CLAMP, COVER PLATE FOR 1/4" TUBE CLAMP	BRAKE LINES
NS	F-HNF-08ME	1	FLHN- 10.9 M8 X 1.25	BRAKELINE TANDEM CLAMP
NS	F-HCF-8M050E	1	FLHC- 10.9 M8 X 1.25 X 50	BRAKELINE TANDEM CLAMP
NS	HC-143601	3	CLAMP, HOSE 1-1/8" R/C 3/8" HOLE	GREASE HOSES & MASTER CYLINDER HOSES
NS	MC-135631	1	CLAMP, HOSE 1-1/2 R/C 3/8" HOLE	CLAMP TRIM HOSES UNDER FEEDER HOUSE
NS	HC-143601	1	CLAMP, HOSE 1-1/8" R/C 3/8" HOLE	CLAMP TRIM HOSES UNDER FEEDER HOUSE
NS	HC-143601	2	CLAMP, HOSE 1-1/8" R/C 3/8" HOLE	CASE DRAIN HOSE
NS	MC-101343	2	CLAMP, HOSE 2-7/16" R/C 3/8" HOLE	PRESSURE AND RETURN HOSES ABOVE HYDRO HOSES
NS	F-HCF-8M020E	2	FLHC-10.9 M8 X 1.25 X 20	HOSE CLAMPS FROM MANIFOLD TO OC
NS	F-HNF-8ME	2	FLHN-10.9 M8 X 1.25	HOSE CLAMPS FROM MANIFOLD TO OC
NS	MC-135791	4	CLAMP, HOSE 7/8" R/C W/ 3/8 HOLE	SHIFTING CABLE & HDR LIFT CYL HOSE
NS	HC-133541	1	ABRASION SLEEVE	LEVELING AND TRIM HOSES FROM OC
NS	HC-143581	2	SLEEVE, ABRASION	MASTER & SLACE CYLINDER HOSES

8 PART NUMBER INDEX

PART NUMBER	PAGE NUMBER	PART NUMBER	PAGE NUMBER	PART NUMBER	PAGE NUMBER
D-060609SGD01	7-1	F-HC8-07C52	6-2	HA-E-4MF	6-6
D-070326ADL01A	7-1	F-HC8-12C240	3-4	HA-E-6MF	6-6
EC-100164	5-2	F-HC-8M020E	2-4	HA-K-6MF6MO	6-6
EC-100165	5-2	F-HCF-05C08	6-4	HA-L-10MO12MF	6-6
EC-100557	5-2	F-HCF-08M090F	7-1	HA-L-12MF12MO	6-6
EC-100692	5-2	F-HCF-10M020E	6-2	HA-L-12MF16MO	6-6
EC-133281	5-2	F-HCF-10M035E	2-4, 3-4	HA-L-12MO12MO	6-6
EC-136631	5-2	F-HCF-10M040F	3-4	HA-L-16MF16MO	6-6
EC-136701	5-2	F-HCF-12M040E	2-4	HA-L-2FP2MP	6-6
EC-136711	5-2	F-HCF-12M040F	3-4	HA-L-4FF4MF	6-6
EC-138781	5-2	F-HCF-16M040E	2-4	HA-L-4MF6MO	6-6
EC-139631	5-2	F-HCF-8M020E	2-4, 3-4, 6-2, 7-1	HA-L-6FF6MF	6-6
EC-139641	5-2	F-HCF-8M020F	6-4	HA-L-6MF6MO	6-6
EC-140781	5-2	F-HCF-8M050E	7-1	HA-L-6MF8MO	6-6
EC-140801	5-2	F-HN8-07C	6-2	HA-L-6MO6MO	6-6
EC-140841	5-2	F-HNF-#10C	5-2	HA-L-8MF8MO	6-6
EC-140851	5-2	F-HNF-#6C	6-4	HA-M-16FF16MF	6-6
EC-140861	5-2	F-HNF-04C	5-2	HA-M-6FF6MF	6-6
EC-141741	5-2	F-HNF-08ME	2-4, 3-4, 7-1	HA-NJ-2FN	6-6
EC-141751	5-2	F-HNF-08MF	6-4	HA-Q-8FF8MF	6-6
EC-141761	5-2	F-HNF-10MF	3-4	HA-S-12MF16FF	6-6
EC-141771	5-2	F-HNF-16ME	2-4, 3-4	HA-S-2FP2MN	6-6
EC-141781	5-2	F-HNF-8ME	3-4, 6-2, 7-1	HA-S-4MF8MO	6-6
EC-141791	5-2	F-HNN-10MF	2-4	HA-S-8MF12MO	6-6
EC-141801	5-2	F-HNN-8MF	3-2	HA-Y-4MF4MF	6-6
EC-141831	5-2	F-HNS-10ME	2-4, 3-4	HC-101034	6-4
EC-142121	5-2	F-HNS-12C	3-4	HC-101843	6-2, 6-5
EC-143271	5-2	F-HNS-12ME	3-4	HC-133541	7-1
EC-143281	5-2	F-HNS-16ME	2-4, 4-2	HC-134201	6-2
EC-143301	5-2	F-HNS-8ME	2-4	HC-134911	6-2
EC-143311	5-2	F-LW-#10	6-4	HC-135771	6-6
EC-143321	5-2	F-LW-04	5-2	HC-137891	6-2
EC-143421	5-2	F-LWE-04	5-2	HC-137901	6-2
EC-143811	5-2	F-LWH-07	6-2	HC-138011	6-6
ET-ST-20#10	5-2	F-LWHC-07	6-2	HC-138581	2-2, 6-2
ET-ST-2004	5-2	F-MB-14NR40	2-4	HC-138901	3-2, 6-2
F-CB-10M050F	2-4	F-PCT-02X16	2-4	HC-139161	6-2
F-CB-16M050E	2-4	F-PHM-#10C16	5-2	HC-139171	6-2
F-FHS-8M030E	2-4	F-PHM-#10C28	5-2	HC-139221	7-1
F-FWF-06020	3-4	F-PHM-#6C06	5-2	HC-139231	7-1
F-FWH-10	3-4, 4-2	F-PHM-#6C08	6-4	HC-139871	6-4
F-HC-08M100F	7-1	F-PHM-04C24	5-2	HC-140291	6-4
F-HC-08M120F	7-1	F-PHM-04C36	5-2	HC-140312	3-2, 6-2
F-HC-10M070E	2-4	F-SHC-#10C52	6-4	HC-140341	3-2, 6-2
F-HC-16M050E	2-4	F-SHC-04C28	6-4	HC-140361	6-2
F-HC-16M060E	4-2	F-SHC-07C20	6-2	HC-140411	6-4
F-HC-16M110E	3-4	F-SHC-24M080E	3-4	HC-141281	6-2
F-HC-16M120E	2-4, 3-4	F-SSS-04F04	6-2	HC-142061	7-1
F-HC-16M250E	4-2	F-UDS-#7X06	3-4	HC-142451	6-2
F-HC5-04C12	5-2	HA-133131	6-5	HC-142731	6-4
F-HC8-07C24	6-2	HA-A-12MO	6-6	HC-142971	6-4
F-HC8-07C44	6-2	HA-A-8MO	6-6	HC-142981	6-4

Model 2970S Hillco Leveling System
For Serial Numbers 2970S-1201 thru 2970S-1299
PART NUMBER INDEX (CONTINUED)

PART NUMBER	PAGE NUMBER	PART NUMBER	PAGE NUMBER	PART NUMBER	PAGE NUMBER
HC-142991	6-4	LA-235711	3-2	LM-248781	3-2
HC-143001	6-4	LA-246702	4-2	LM-250533	2-2
HC-143011	6-4	LA-247093	3-2	LM-250541	2-2
HC-143061	6-4	LA-247284	3-2	LM-250561	2-2
HC-143071	6-4	LA-247482	3-2	LM-250571	2-2
HC-143081	6-4	LA-250163	2-2	LM-250581	2-2
HC-143091	6-4	LA-250243	2-2	LM-255331	5-2
HC-143101	6-2	LA-250713	2-2	LM-255341	5-2
HC-143361	6-2	LA-252151	6-5	LM-260211	6-4
HC-143371	6-2	LA-252462	5-4	LM-260591	3-2
HC-143441	6-2	LA-252472	5-4	LM-260821	2-2
HC-143581	6-5	LA-252482	5-4	LM-260871	6-4
HC-143601	7-1	LA-253131	3-2	LM-261081	6-2
HC-143701	6-5	LA-253882	2-2, 3-2	LM-261091	3-2
HC-143731	6-4	LA-255621	5-2, 5-4	LP-230241	3-2
HC-143741	6-4	LA-255631	5-4	LP-235092	4-2
HC-143841	6-5	LA-255642	5-4	LP-247961	3-2
HC-143971	6-4	LA-255721	5-4	LP-250041	6-4
HC-143981	6-4	LA-255731	5-4	LP-250522	2-2
HC-143991	6-4	LA-255821	5-2, 5-4	LP-250551	2-2
HC-144001	6-4	LA-255961	3-2, 7-1	LP-252241	3-2
HC-145181	6-4	LA-260221	5-4	LP-258221	3-2
HC-145191	6-4	LA-260231	5-4	LP-260791	2-2
HC-145201	6-4	LA-260241	5-4	LP-260801	2-2
HC-145211	6-4	LA-260251	5-4	LP-260811	2-2
HC-145221	6-4	LA-260361	5-4	LP-261031	6-4
LA-130371	6-5	LA-260721	2-2	LP-261111	6-2
LA-138942	6-5	LA-260771	2-2	LP-261121	3-2
LA-138951	6-5	LA-260851	2-2	LP-261351	2-2
LA-138962	6-5	LA-260861	2-2	LP-261431	3-2, 5-2
LA-138971	6-5	LA-261021	2-2	LP-261531	3-2
LA-138981	6-5	LA-261141	5-4	LTP-241721	2-2
LA-139102	6-5	LA-261151	5-4	MC-101343	7-1
LA-139112	6-5	LA-261161	5-4	MC-135531	2-2
LA-139122	6-5	LA-261171	5-4	MC-135631	7-1
LA-139132	6-5	LA-261371	3-2	MC-135791	7-1
LA-139531	6-5	LA-261481	5-4	MC-137521	7-1
LA-139541	6-5	LA-261661	5-4	MC-137531	7-1
LA-140383	6-5	LA-261691	5-4	MC-138641	3-2
LA-140401	6-5	LA-262021	3-2	MC-138651	3-2
LA-143471	6-5	LL-133741	7-1	MC-141331	2-2
LA-143481	6-5	LL-141301	7-1	MC-141551	3-2
LA-143491	6-5	LL-143621	7-1	MC-142261	2-2
LA-143501	6-5	LL20-100782	7-1	MC-142921	3-2
LA-143511	6-5	LL20-100783	7-1	MC-143461	2-2
LA-143531	6-5	LL20-100784	7-1	MC-143591	2-2
LA-143681	6-5	LL20-100786	7-1	MC-143631	2-2
LA-143691	6-5	LL20-100787	7-1	MC-143641	2-4
LA-143791	6-5	LL20-100788	7-1	MC-143711	3-4
LA-143831	6-5	LM-226841	2-2	MC-143721	3-4
LA-230552	3-2	LM-229192	2-2		