

**Model 2970**  
**Hillside Leveling System**  
**Parts Manual**

SN 2970-1301 thru 2970-1399

D-080701ADL01A







**2970 Hillside Leveling System**  
for 9650 STS, 9660 STS, 9760 STS, 9860 STS  
AND 9750 STS John Deere Combines

**TABLE OF CONTENTS**

<b>1 GENERAL INFORMATION</b> .....	<b>1-3</b>
Serial Number Location .....	1-3
Text Format and Illustrations .....	1-3
Abbreviations.....	1-3
Right and Left Identification .....	1-3
Parts Orders .....	1-3
<b>2 TRANSITION</b> .....	<b>2-1</b>
Radial Pin Slip Clutch .....	2-3
Transition Fasteners.....	2-5
wheel components & wheel fasteners .....	2-7
<b>3 CARRIAGE</b> .....	<b>3-1</b>
Carriage Fasteners.....	3-3
<b>4 Y-BRACE</b> .....	<b>4-1</b>
<b>5 DROP AXLE</b> .....	<b>5-1</b>
<b>6 LADDER</b> .....	<b>6-1</b>
<b>7 ELECTRICAL COMPONENTS</b> .....	<b>7-1</b>
Electrical Cables.....	7-3
<b>8 HYDRAULICS</b> .....	<b>8-1</b>
Hydraulic Leveling Manifold.....	8-3
Hydraulic Trim Manifold.....	8-5
Hydraulic Pump .....	8-7
Hydraulic Hoses .....	8-9
Hydraulic Hoses (Continued).....	8-10
Hydraulic Adapters .....	8-11
Hydraulic Adapters (Continued) .....	8-12
<b>9 MISCELLANEOUS</b> .....	<b>9-1</b>
<b>10 PART NUMBER INDEX</b> .....	<b>10-1</b>
Part Number Index (Continued).....	10-2

Model 2970 Hillco Leveling System  
For Serial Numbers 2970-1301 thru 2970-1399

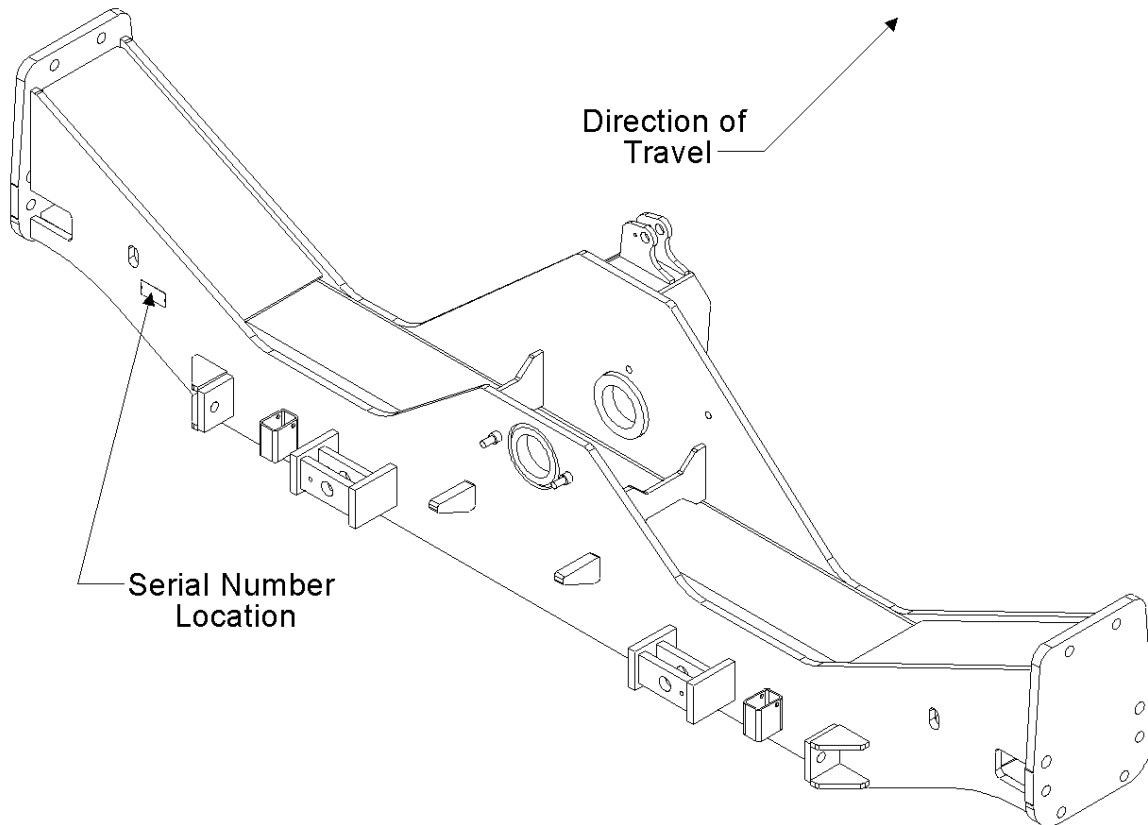
Hillco Technologies, Inc.  
107 1<sup>st</sup> Avenue  
Nezperce Id. 83543

Fax	208.937.2280
Phone	208.937.2461
Toll Free	800.937.2461

[www.hillcotechnologies.com](http://www.hillcotechnologies.com)

## 1 GENERAL INFORMATION

### SERIAL NUMBER LOCATION



### TEXT FORMAT AND ILLUSTRATIONS

The arrangement of this parts catalog is for easy identification of parts. All parts are illustrated in exploded views in proper relation to each other. Some diagrams refer to other pages for further information. Reference numbers used in the illustrations refer to line numbers in the part lists. The part lists appear to the right of all diagrams and correspond with those diagrams. Included in the part lists, along with the reference numbers are part numbers, part descriptions and the quantity of the part required per leveling system.

### ABBREVIATIONS

**SN** "Serial Number" refers to the serial number given to each leveling system (by Hillco Technologies), as well as the serial number given to the combine (by the specific combine manufacturer) the leveling system is installed upon. This abbreviation is used interchangeably in both instances. Each model 2970 Leveling System uses the following serial number format: 2970-XXXX (sequential numbers).

**ASM** "Assembly" refers to a whole grouping of parts (usually shown in the diagram corresponding with the page where "ASM" is shown unless otherwise noted). Some assemblies have parts that are sold separately, however some must be purchased as a single unit. Hillco Product Specialists will be able to assist you with any questions.

**NS** "Not Shown" refers to a part that is not depicted in the illustration.

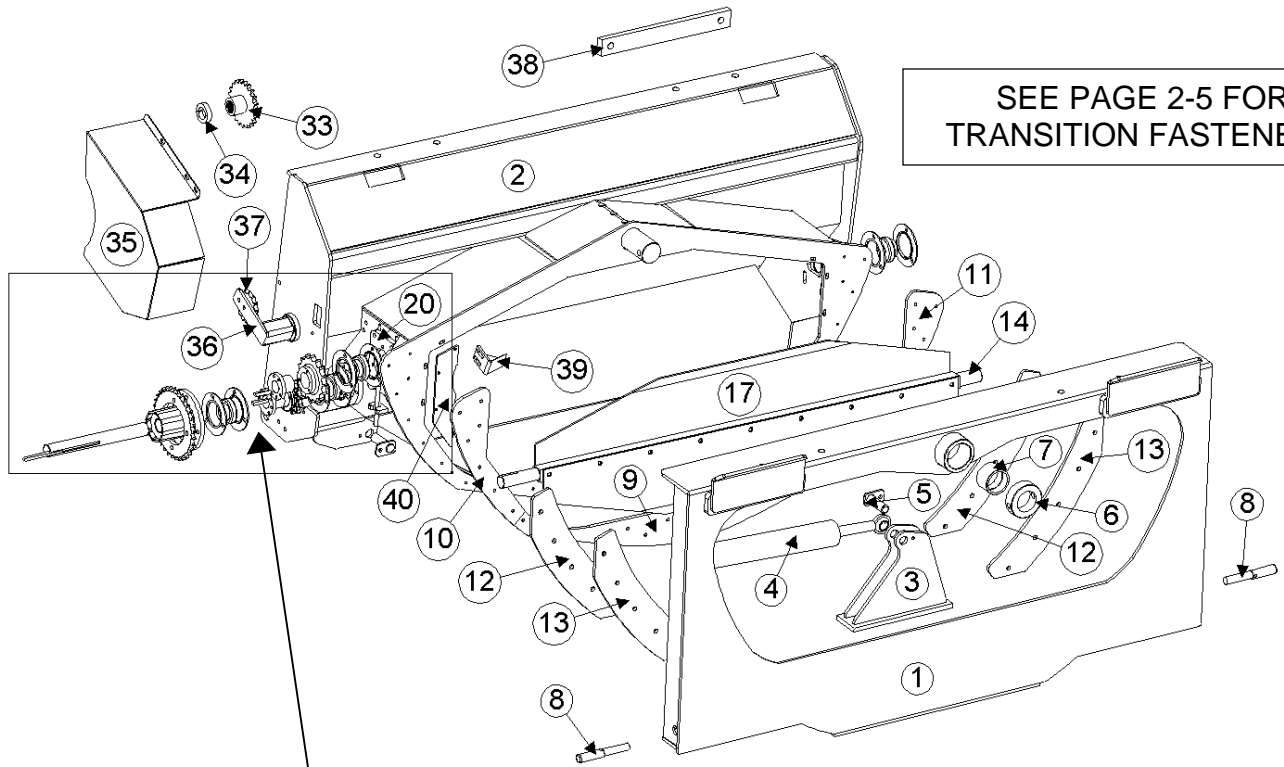
### RIGHT AND LEFT IDENTIFICATION

The reference to right-hand and left-hand in this catalog is identified by the operator sitting in the operator's seat, looking toward the front of the machine (in normal forward travel).

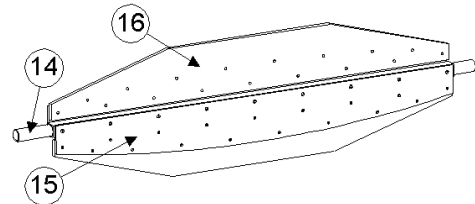
### PARTS ORDERS

Orders must specify product model, serial number, correct part number, complete description, quantity required, method of shipment, shipping address, and billing address.

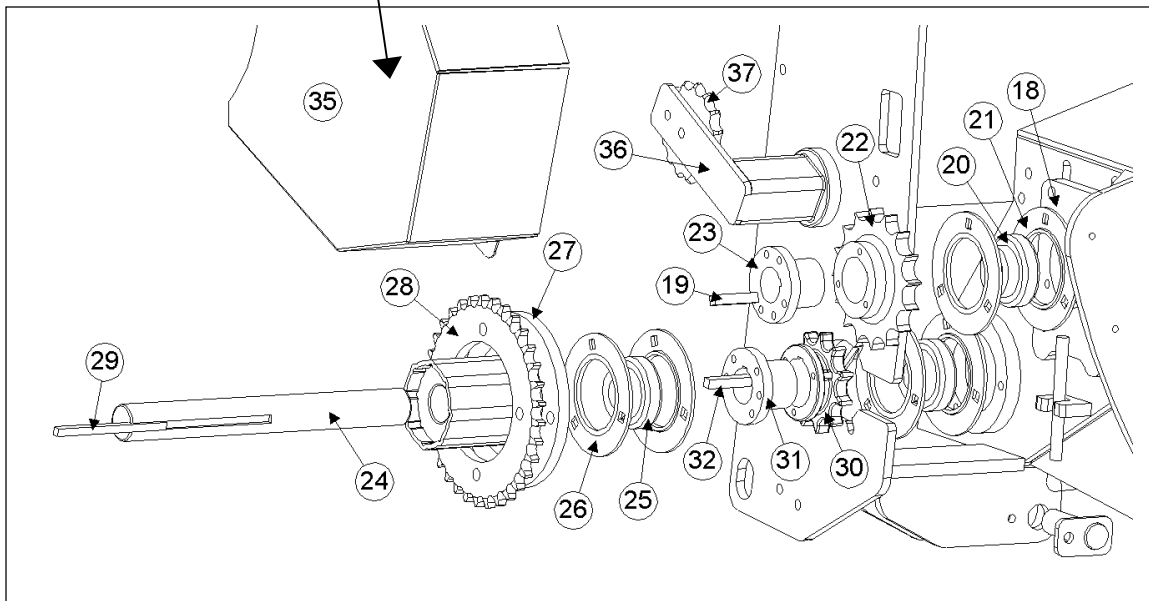
## 2 TRANSITION



Midwest Option View:  
Rubber Paddles with Backing Plates



TRANSITION DRIVE COMPONENT DETAIL

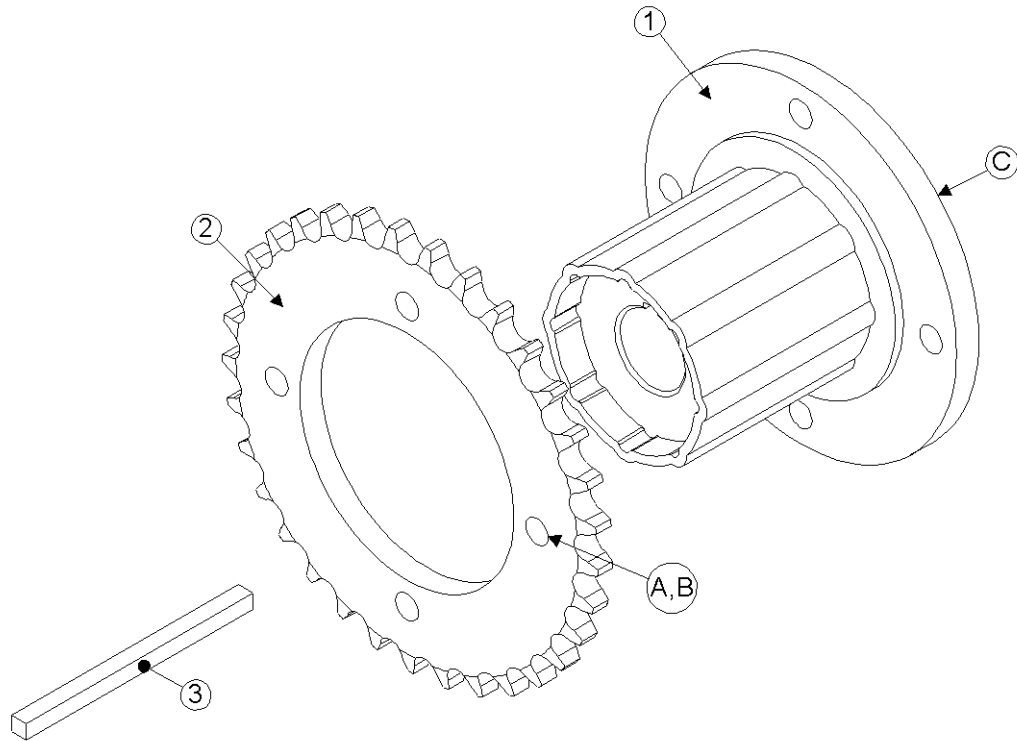


Model 2970 Hillco Leveling System  
For Serial Numbers 2970-1301 thru 2970-1399

<b>TRANSITION COMPONENTS</b>				
<b>REF.</b>	<b>PART NO.</b>	<b>QTY.</b>	<b>PART NAME</b>	<b>NOTES</b>
1	LA-228893	1	TA ADAPTER ASM	
2	LA-234952	1	TT THROAT ASM	
3	LA-229022	1	TM MOUNT ASM, ROD	
4	HC-100706	1	CYLINDER, SLAVE, 2-1/2 X 12-1/2	SEE HYDRAULICS PAGE 8-1
NS	HC-134191	1	SEAL KIT, SLAVE CYLINDER	
5	LA-229071	2	TM PIN ASM, TRIM CYLINDER	
NS	LM-237751	1	LM STOP, SLAVE CYL ROD	MIDWEST COMBINES WITH 6-ROW CORN HEAD
NS	LM-237761	1	LM STOP, SLAVE CYL BASE	MIDWEST COMBINES WITH 6-ROW CORN HEAD
6	LM-226841	1	TM COLLAR, PIVOT	
7	LTP-241721	1	BUSHING, GRAPHITE	
8	LM-229192	2	TM ROD, LOCK	
NS	MC-135531	2	SPRING, COMPRESSION	
9	LM-229152	1	TM PLATE, WEAR BOTTOM	
10	LM-229161	1	TM PLATE, WEAR LH	
11	LM-229171	1	TM PLATE, WEAR RH	
12	LM-249861	2	TM PLT, BACKING	
13	LP-249871	2	TM UHMW, BACKING	
<b>BEATER SHAFT</b>				
14	LA-249611	1	TB ASM, SHAFT	
15	LM-228442	2	TB PLATE, PADDLE BACKING	MIDWEST COMBINES ONLY
16	LP-228881	2	TB PADDLE, RUBBER	MIDWEST COMBINES ONLY
17	LM-238341	2	TB PADDLE, METAL	NORTHWEST COMBINES ONLY
18	LA-229051	2	TM MOUNT ASM, BEATER	
19	LS-212701	1	TM KEY, BEATER DRIVE, 3/8 X 2	
20	MC-100548	2	BEARING INSERT, 1-7/16, NON-RELUBE	
21	MC-101339	2	FLANGETTES, RND BEARING	
22	MC-135501	1	SPROCKET, 16T 80P TAPER BORE HRD	
23	MC-135511	1	HUB, SPLIT TAPER 1-7/16	
NS	LP-232162	1	TM ROLLER CHAIN, 28 PIN 80P	JACK SHAFT TO BEATER SHAFT
NS	MC-139341	1	LINK, CONNECTING, 80P	
NS	MC-139351	1	LINK, OFFSET, 80P	
<b>TRANSITION THROAT JACK SHAFT</b>				
24	LM-229142	1	TM SHAFT, JACK	
25	MC-100548	2	BEARING INSERT, 1-7/16, NON-RELUBE	
26	MC-101339	2	FLANGETTES, RND BEARING	
27	MC-136921	1	RADIAL PIN SLIP CLUTCH	
28	LM-226532	1	TM SPROCKET, RADIAL PIN SLIP CLUTCH	
29	LS-244471	1	TM KEY, RADIAL PIN SLIP CLUTCH	
30	MC-135491	1	SPROCKET, 11T 80P TAPER BORE HRD	
31	MC-135511	1	HUB, SPLIT TAPER 1-7/16	
32	LS-212701	1	TM KEY, BEATER DRIVE, 3/8 X 2	
NS	LP-255131	1	TM CHAIN, 72 PIN 60P	DRIVE SPROCKET TO SLIP CLUTCH
NS	MC-139361	1	LINK, CONNECTING, 60P	
NS	MC-139371	1	LINK, OFFSET, 60P	
<b>FEEDER HOUSE BEATER DRIVE</b>				
33	LA-235891	1	TM DRIVE ASM TRAN., 21T 21SP/60P	
34	MC-142001	2	1PC COLLAR, SPLIT, 1-3/8 BORE	
35	LM-236232	1	TM SHIELD, DRIVE	
<b>TENSIONER</b>				
36	MC-100546	1	TENSIONER	
37	MC-100237	1	SPROCKET, IDLER, 15T 60P 5/8B	
NS	MC-139241	1	TENSIONER HARDWARE KIT	
<b>OPTIONAL - FOR COMBINES WITH CONTOUR MASTER</b>				
38	LM-254781	1	LM FLAT, CM BAR	

Model 2970 Hillco Leveling System  
For Serial Numbers 2970-1301 thru 2970-1399

**RADIAL PIN SLIP CLUTCH**



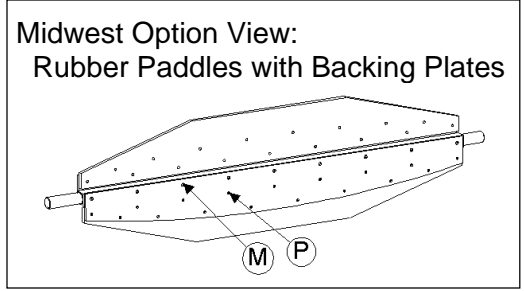
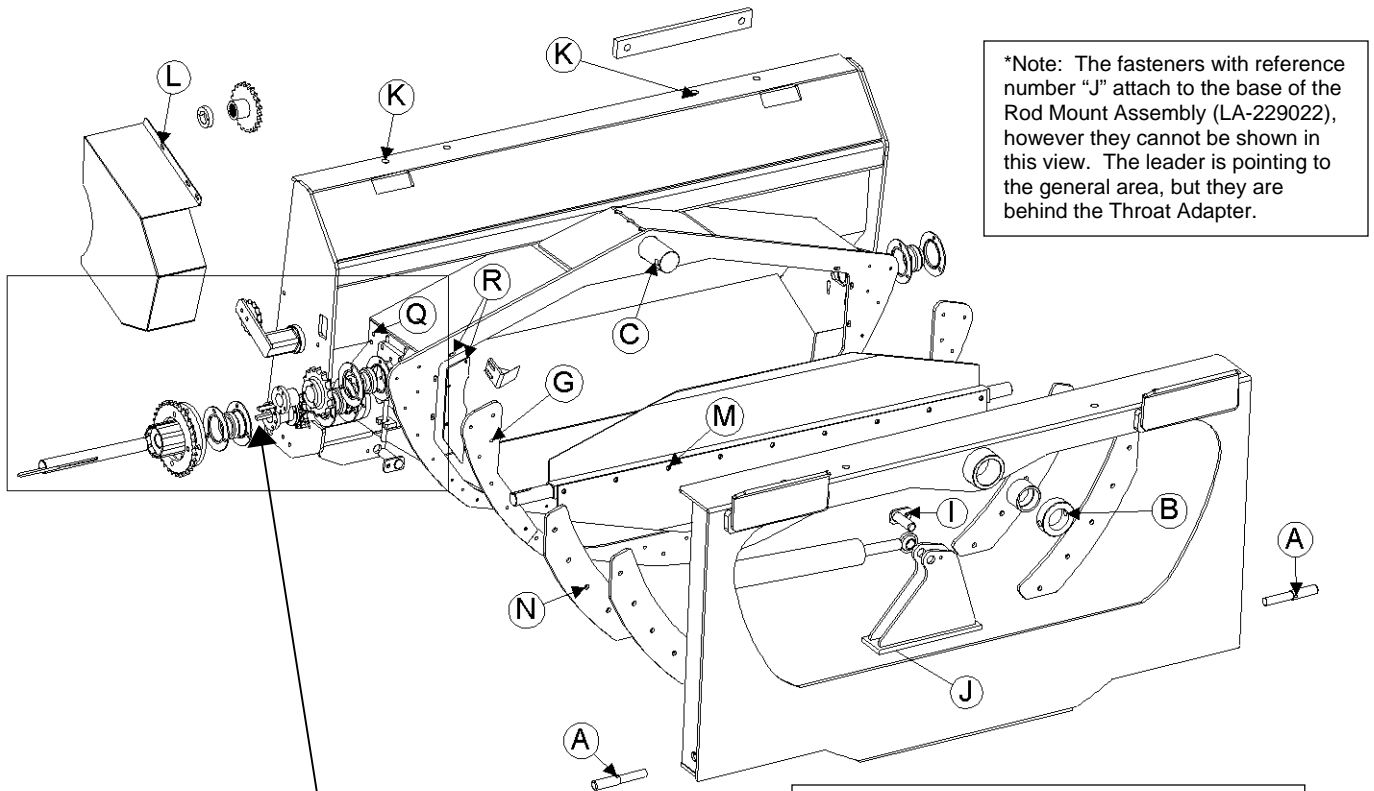


Model 2970 Hillco Leveling System  
For Serial Numbers 2970-1301 thru 2970-1399

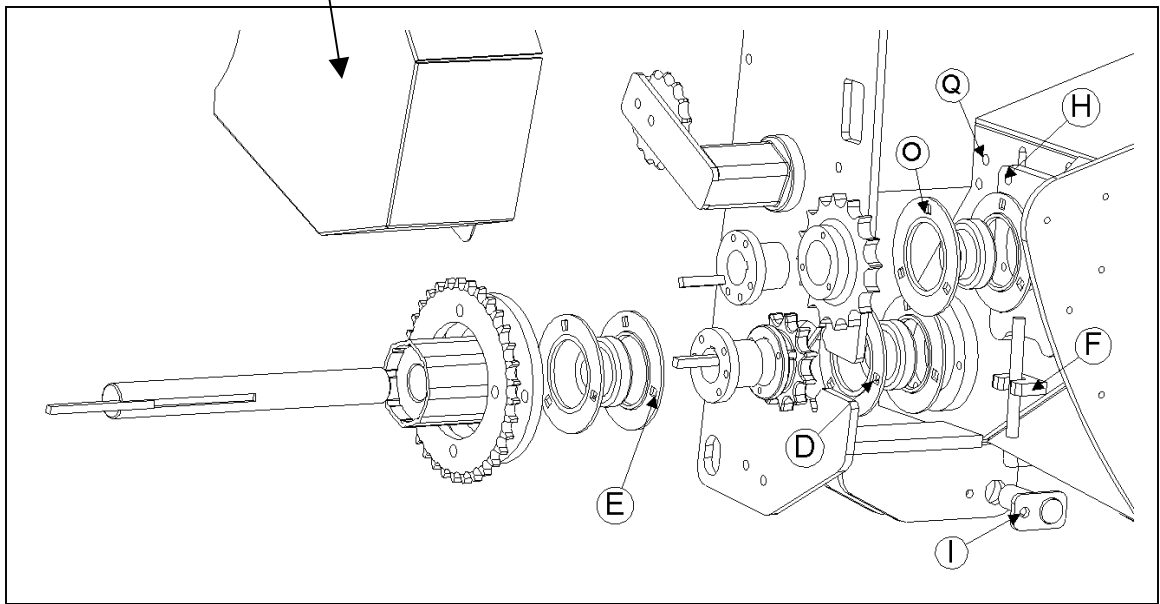
<b>RADIAL PIN SLIP CLUTCH COMPONENTS</b>				
<b>REF.</b>	<b>PART NO.</b>	<b>QTY.</b>	<b>PART NAME</b>	<b>NOTES</b>
1	MC-136921	1	RADIAL PIN SLIP CLUTCH	
2	LM-226532	1	TM SPROCKET, RADIAL SLIP CLUTCH	
3	LS-244471	2	TM KEY, RADIAL PIN SLIP CLUTCH	
<b>RADIAL PIN SLIP CLUTCH FASTENERS</b>				
A	F-HC8-08F20	4	HC8 1/2-20 X 1-1/4	
B	F-LW-08A	4	LW 1/2 HD	
C	F-SSS-06C08	2	SCREW, SOCKET SET 3/8-16 X 2	

Model 2970 Hillco Leveling System  
 For Serial Numbers 2970-1301 thru 2970-1399

**TRANSITION FASTENERS**



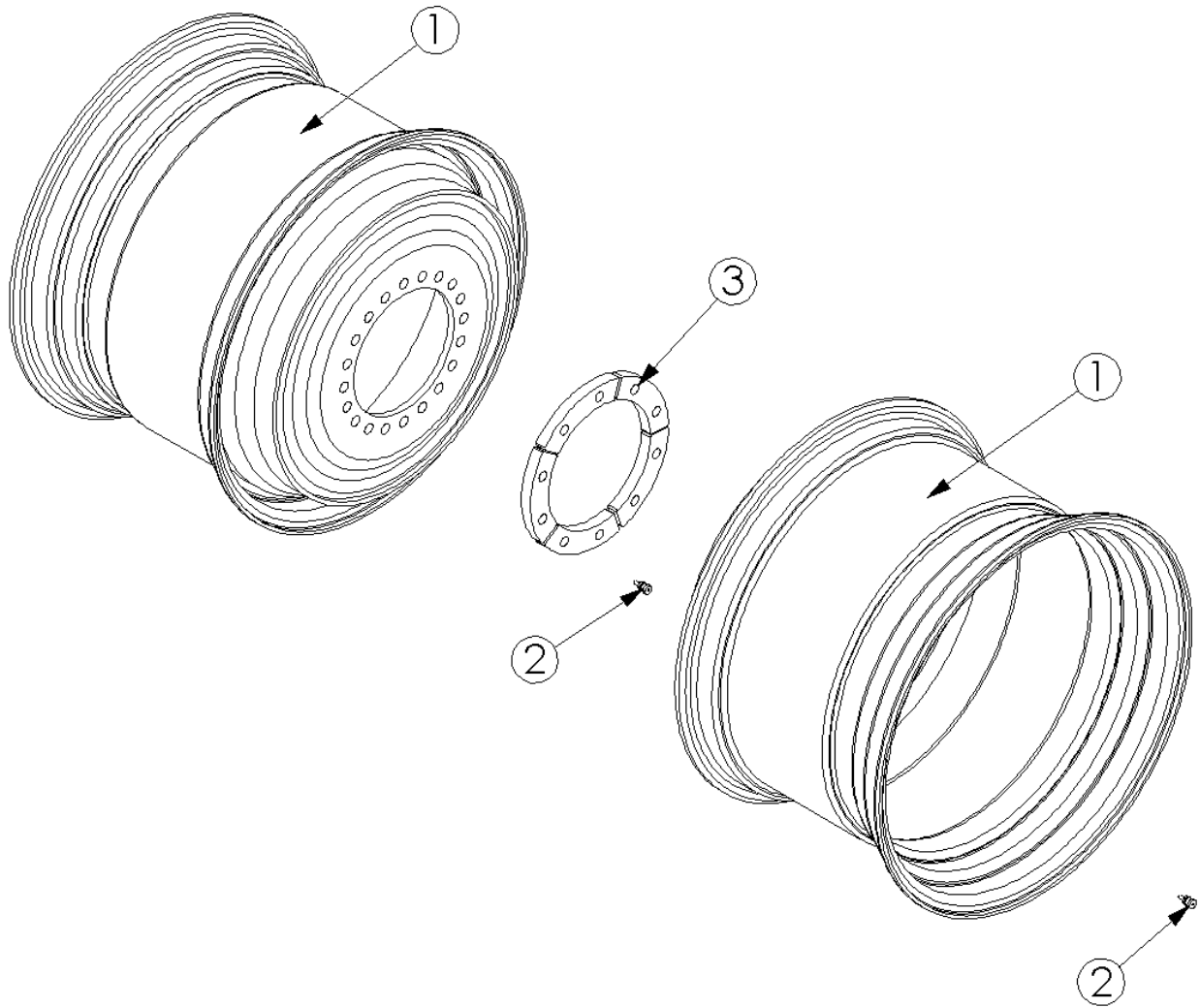
**TRANSITION DRIVE COMPONENT FASTENERS DETAIL**



Model 2970 Hillco Leveling System  
For Serial Numbers 2970-1301 thru 2970-1399

<b>TRANSITION FASTENERS</b>				
<b>REF.</b>	<b>PART NO.</b>	<b>QTY.</b>	<b>PART NAME</b>	<b>WHERE USED</b>
A	F-SHC-10M070F	2	SHCS-8.8 M10 X 1.50 X 70	THA HEADER LOCK
B	F-HC-16M120E	1	HC-10.9 M16 X 2.00 X 120	MAIN PIVOT PIN COLLAR
B	F-HNS-16ME	1	HN-10.9 M16 X 2.00 STOVER	MAIN PIVOT PIN COLLAR
C	F-MB-14NR40	3	MACH BUSH 14 GA NR 2-1/2" ID	MAIN PIVOT PIN
D	F-HCF-10M020E	3	FLHC-10.9 M10 X 1.50 X 20	INNER 3-BOLT JS BEARING
E	F-CB-10M030F	3	CARR-8.8 M10 X 1.50 X 30	OUTER 3-BOLT JS BEARING
E	F-HNF-10MF	3	FLHN-8.8 M10 X 1.50	OUTER 3-BOLT JS BEARING
F	F-FWH-08	4	FW 1/2 HD YELLOW	BEATER BRNG TAKE-UP BLT
F	F-HNJ-12MF	4	HN-8.8 M12 X 1.75 JAM	BEATER BRNG TAKE-UP BLT
G	F-FHS-8M015E	29	FHSC-10.9 M8 X 1.25 X 15	UHMW WEAR PLATES
H	F-CB-12M040F	8	CARR-8.8 M12 X 1.75 X 40	TT BEATER BRNG MNT PLT
H	F-HNF-12MF	8	FLHN-8.8 M12 X 1.75	TT BEATER BRNG MNT PLT
I	F-HCF-10M020F	2	FLHC-8.8 M10 X 1.50 X 20	SLAVE CYL MNT PIN
J	F-HC-16M050E	3	HC-10.9 M16 X 2.00 X 50	ROD MNT
J	F-HNS-16ME	3	HN-10.9 M16 X 2.00 STOVER	ROD MNT
K	F-HCF-12M040E	4	FLHC-10.9 M12 X 1.75 X 40	TRANSITION MNT- FOR SN [9750 ( -688210); 9650 ( -686329)]
K	F-HCF-16M040E	4	FLHC-10.9 M16 X 2.00 X 40	TRANSITION MNT ALL 60 SERIES COMBINES; [9750 (688211- ); 9650 (688330- )]
L	F-HNF-10MF	2	FLHN-8.8 M10 X 1.50	TM DRIVE SHIELD
L	F-HCF-10M020F	2	FLHC-8.8 M10 X 1.50 X 20	TM DRIVE SHIELD
M	F-HNSF-12ME	9	FLHN-10.9 M12 X 1.75 STOVER	STEEL BEATER PADDLES OR PADDLE BACKING PLATES
M	F-HCF-12M080E	9	FLHC-10.9 M12 X 1.75 X 80	STEEL BEATER PADDLES OR PADDLE BACKING PLATES
N	F-HCF-12M040E	10	FLHC-10.9 M12 X 1.75 X 40	BACKING PLATES
O	F-HCF-10M020F	6	FLHC-8.8 M10 X 1.50 X 20	BEATER BRNG MNT PLT
NS	F-HNF-16ME	4	FLHN 10.9 M16 X 2.00	THROAT ASSEMBLY MISCELLANEOUS
<b>FOR MIDWEST COMBINES</b>				
P	F-EB-04C20	34	BOLT, ELEVATOR, 1/4-20 x 1-1/4 ZINC	PB PADDLES
P	F-HNF-04C	34	SERR. FLHN 1/4-20 ZINC	PB PADDLES
<b>OPTIONAL PADDLE BEATER ANTI-WRAP</b>				
Q	F-HCF-10M025E	4	FLHC-10.9 M10 X 1.50 X 25	ANTI-WRAP ASSEMBLIES
Q	F-HNF-10ME	4	FLHN-10.9 M10 X 1.50	ANTI-WRAP ASSEMBLIES
R	F-HC-06M020F	6	HC-8.8 M6 X 1.0 X 20	THROAT NARROWING PLATES
R	F-HNF-06MF	6	FLHN-8.8 M6 X 1.0	THROAT NARROWING PLATES

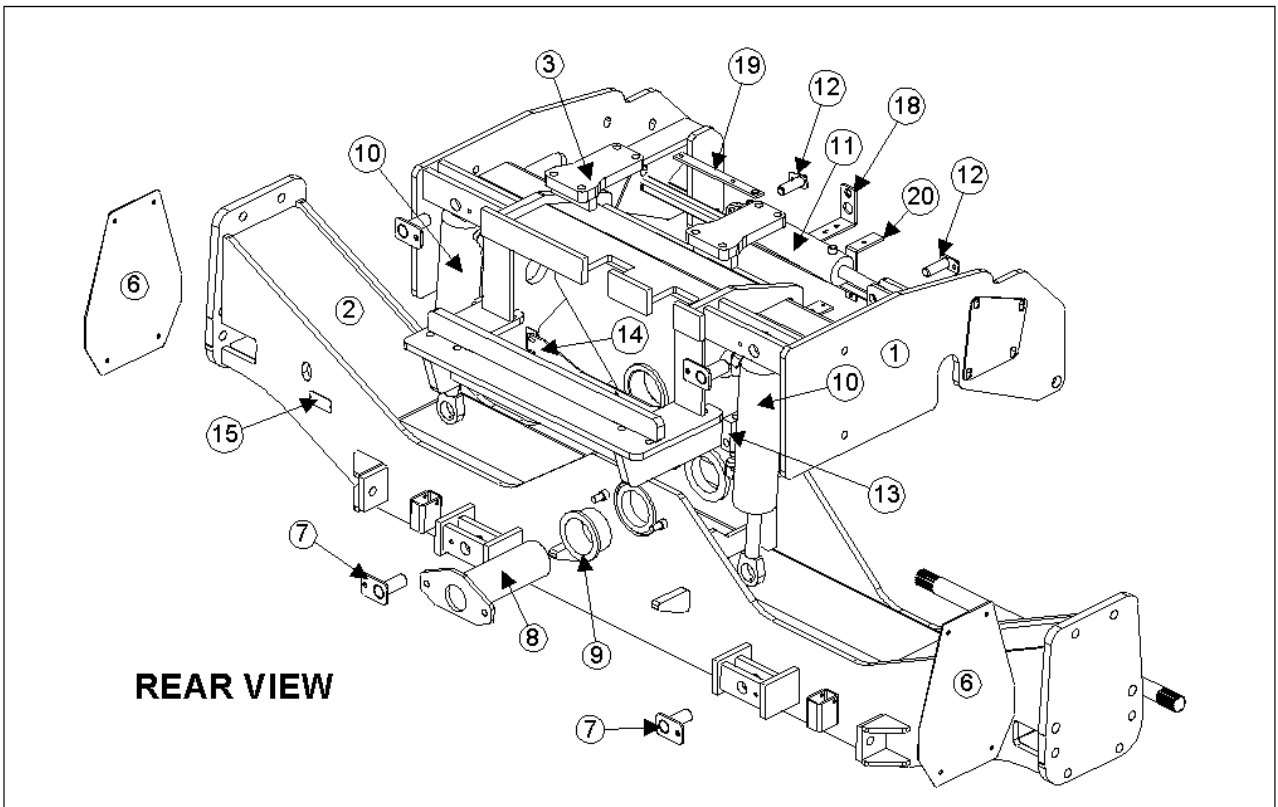
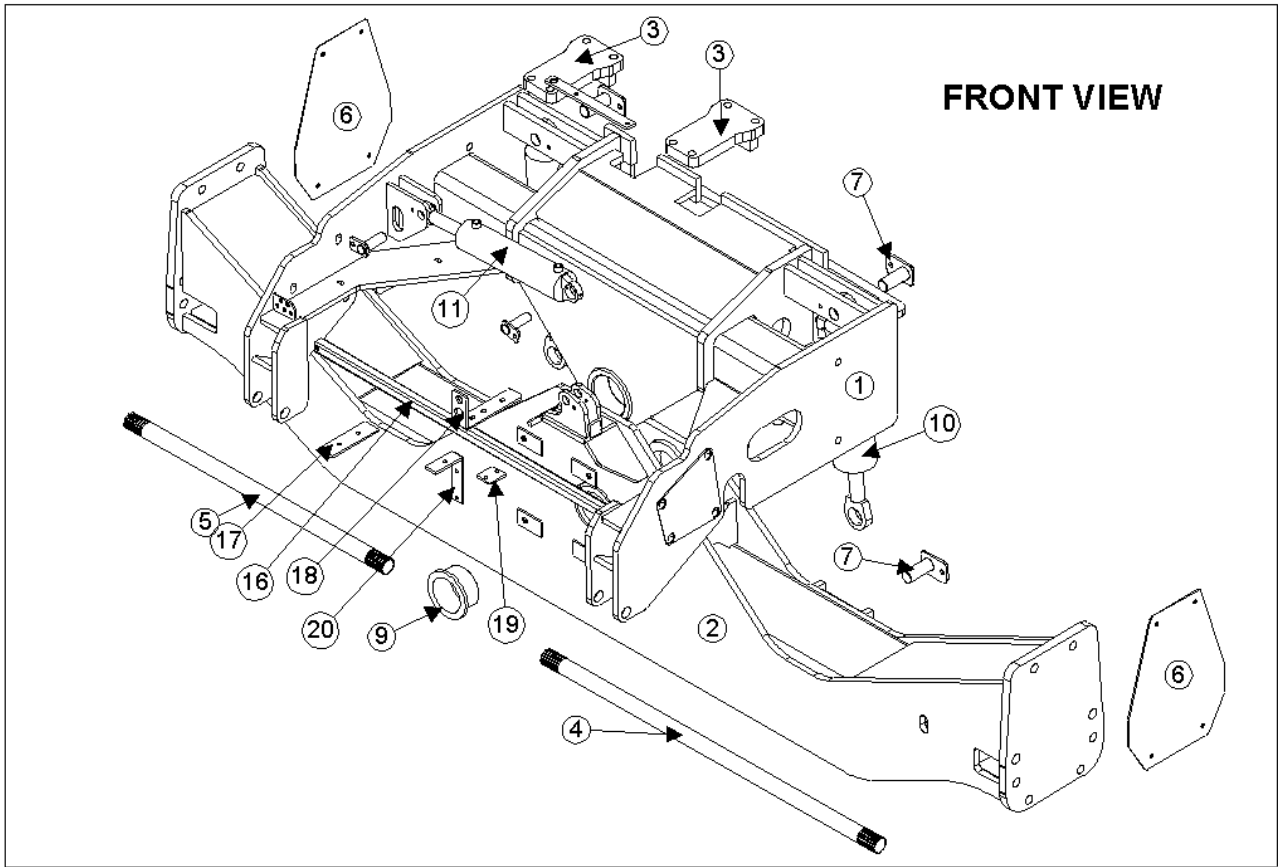
Model 2970 Hillco Leveling System  
For Serial Numbers 2970-1301 thru 2970-1399  
**WHEEL COMPONENTS & WHEEL FASTENERS**



Model 2970 Hillco Leveling System  
For Serial Numbers 2970-1301 thru 2970-1399

<b>WHEEL COMPONENTS</b>				
<b>REF.</b>	<b>PART NO.</b>	<b>QTY.</b>	<b>PART NAME</b>	<b>NOTES</b>
1	MC-143121	4	32 X 21 SINGLE PIECE WHEEL	
2	MC-143921	4	VALVE STEM	
3	LA-265961	2	SET, WHEEL CLAMPING RING	
<b>WHEEL FASTENERS</b>				
<b>REF.</b>	<b>PART NO.</b>	<b>QTY.</b>	<b>PART NAME</b>	<b>NOTES</b>
NS	N/A	20	BOLT	JOHN DEERE FASTENERS
NS	N/A	10	SPACER PLATE	JOHN DEERE FASTENERS
NS	N/A	20	NUT	JOHN DEERE FASTENERS

### 3 CARRIAGE

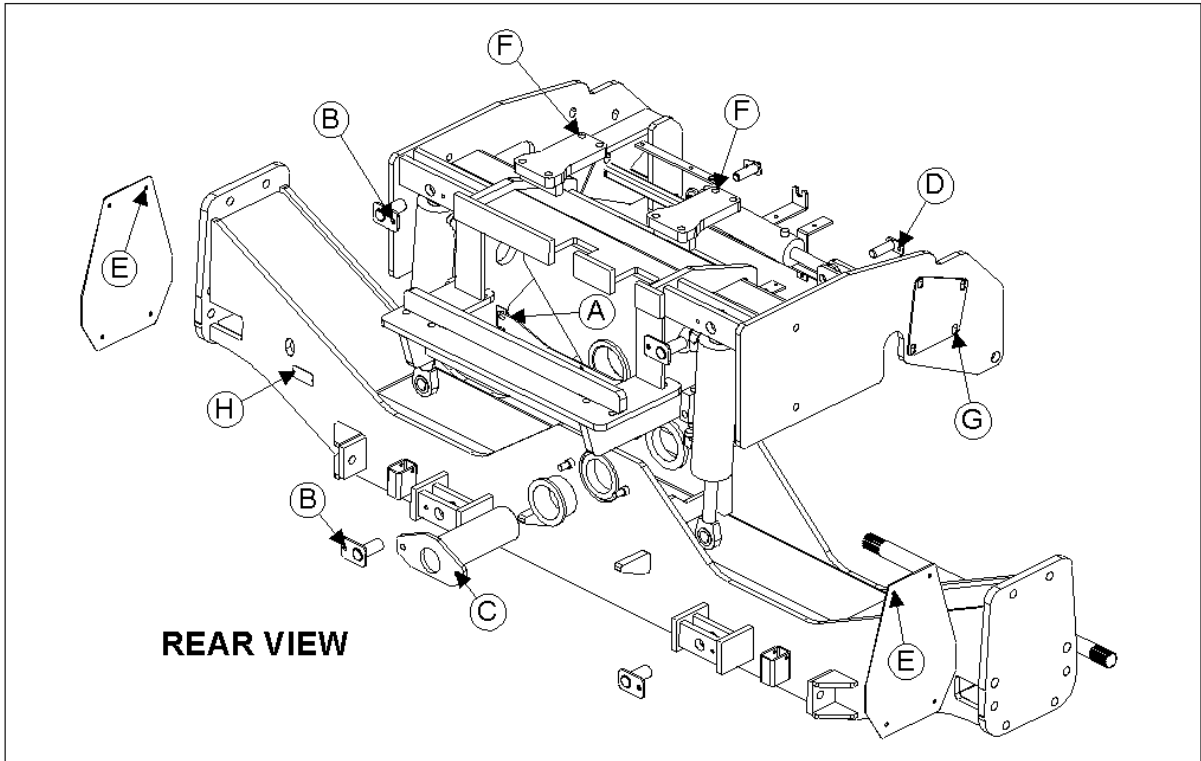
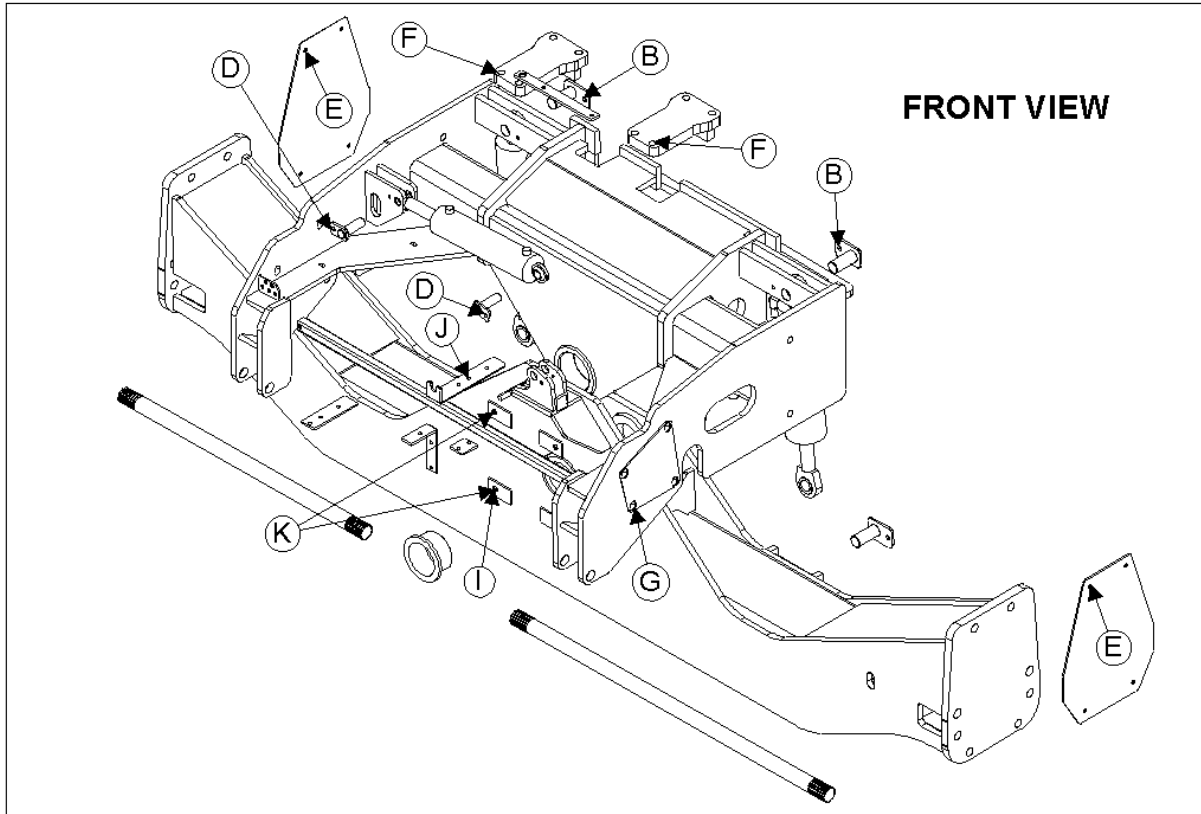


Model 2970 Hillco Leveling System  
For Serial Numbers 2970-1301 thru 2970-1399

<b>CARRIAGE COMPONENTS</b>				
<b>REF.</b>	<b>PART NO.</b>	<b>QTY.</b>	<b>PART NAME</b>	<b>NOTES</b>
1	LA-234923	1	CO ASM, 2970	
2	LA-234964	1	CU ASM, 122.5	
NS	LA-234943	1	CU ASM, 114.5	OPTIONAL-- FOR MIDWEST COMBINES
3	LA-235711	2	CM PLATE ASM, TOP	
4	MC-134261	1	COUNTER SHAFT, 1228 MM, LEFT	RG&P, 122.5 UNDERCARRIAGE, NO EXTENSIONS
4	MC-134281	1	COUNTER SHAFT, 1126.5 MM, LEFT	RG&P, 114.5 UNDERCARRIAGE, NO EXTENSIONS
4	MC-134301	1	COUNTER SHAFT, 1175.5 MM, LEFT	RG&P, 114.5 UNDERCARRIAGE, WITH EXTENSIONS
5	MC-134271	1	COUNTER SHAFT, 951 MM, RIGHT	RG&P, 122.5, UNDERCARRIAGE, NO EXTENSIONS
5	MC-134291	1	COUNTER SHAFT, 849.5, RIGHT	RG&P, 114.5 UNDERCARRIAGE, NO EXTENSIONS
5	MC-134311	1	COUNTER SHAFT, 898.5 MM, RIGHT	RG&P, 114.5 UNDERCARRIAGE, WITH EXTENSIONS
6	LP-230241	2	CM CAP, AXLE	
7	LA-230551	4	CM PIN ASM, MAIN CYLINDER	
8	LA-229252	1	CM PIN ASM, MAIN PIVOT	
9	LP-103871	2	CO BUSHING, PIVOT	
10	HC-103227	2	CYLINDER, MAIN LEVELING	SEE HYDRAULICS PAGE 8-1
11	HC-101842	1	CYLINDER, MASTER	SEE HYDRAULICS PAGE 8-1
12	LA-229071	2	TM PIN ASM, TRIM CYLINDER	
13	HC-139151	2	VALVE, 3-PORT COUNTERBALANCE	SEE HYDRAULICS PAGE 8-1
14	LM-234653	1	EM MOUNT, CONTROL BOX	
15	LA-256001	1	TAG, SERIAL NUMBER	
16	LM-260121	1	CM TUBE, HOSE HANGER	
17	LM-260131	1	CM MOUNT, HYDRO HOSE	
18	LP-260142	1	CM MNT, HDR LIFT CYL HOSE	
19	LM-260151	1	CM CLAMP, HOSE MOUNT	
<b>MISCELLANEOUS CARRIAGE COMPONENTS</b>				
20	LM-248781	1	LM FLT, BRAKELINE BRACKET	
21	LM-261861	1	HM MOUNT, HYDRO HOSE CLAMP	BOLTS TO TRANSMISSION
NS	LM-255531	1	BEHRINGER CLAMP, SPACER	
NS	MC-137521	2	HOSE CLAMP, TANDEM	
NS	MC-137531	2	HOSE CLAMP, TANDEM COVER PLATE	
NS	HC-142051	1	SLEEVE, ABRASION , E- BRAKE CABLE	
NS	HC-142061	1	SLEEVE, ABRASION , SHIFT CABLE	
NS	LP-249321	2	CM SPACER, SHIPPING	
NS	MC-142921	2	EMERGENCY BRAKE CABLES	
NS	F-HC-08M090F	2	HC-8.8 M8 X 1.25 X 90	CLAMP FOR HYDRO HOSES
NS	F-HC-08M100F	1	HC-8.8 M8 X 1.25 X 100	CLAMP FOR HYDRO HOSES
NS	F-HNF-08MF	2	FLHN-8.8 M8 X 1.25	CLAMP FOR HYDRO HOSES
NS	MC-141551	1	CABLE, SHIFT	
NS	F-HNN-8MF	2	HN- 8.8 M8 X 1.25 NYLOCK	NUT, FOR E-BRAKE
NS	HC-133541	1	ABRASION SLEEVE, 36"	LEVELING & TRIM HOSES FROM OVERCARRIAGE

Model 2970 Hillco Leveling System  
For Serial Numbers 2970-1301 thru 2970-1399

**CARRIAGE FASTENERS**



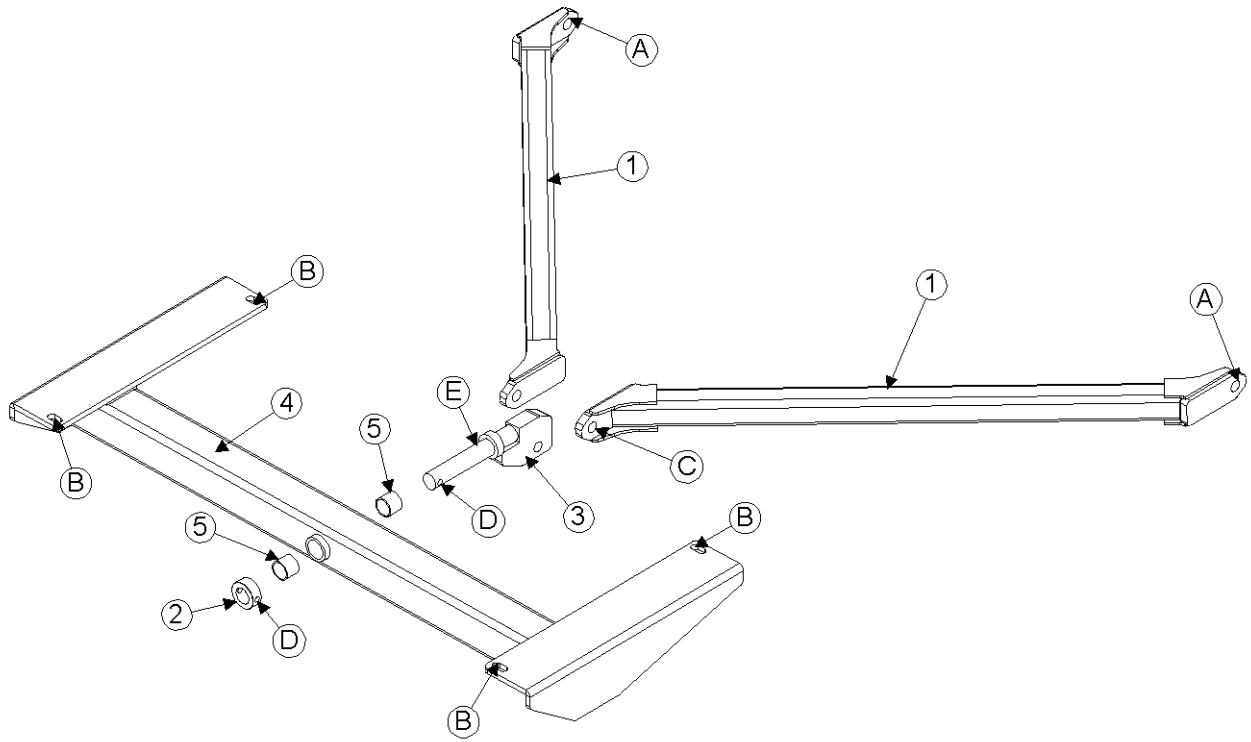


Model 2970 Hillco Leveling System  
For Serial Numbers 2970-1301 thru 2970-1399

<b>CARRIAGE FASTENERS</b>				
<b>REF.</b>	<b>PART NO.</b>	<b>QTY.</b>	<b>PART NAME</b>	<b>WHERE USED</b>
A	F-HNF-10MF	4	FLHN-8.8 M10 X 1.50	EM MOUNT, CONTROL BOX
A	F-HC-10M025F	4	HC-8.8 M10 X 1.50 X 25	EM MOUNT, CONTROL BOX
B	F-HCF-12M025F	4	FLHC-8.8 M12 X 1.75 X 25	LEVELING CYL MNT PIN
C	F-HNS-16ME	2	HN-10.9 M16 X 2.00 STOVER	MAIN PVT PIN
D	F-HCF-10M020E	2	FLHC-10.9 M10 X 1.50 X 20	MASTER CYL MNT PIN
E	F-HCF-10M040F	8	HC 8.8 M10 X 1.50 X 40 FLNG	ORIGINAL AXLE COVER
E	F-HNF-10MF	8	HC 8.8 M10 X 1.50 FLNG	ORIGINAL AXLE COVER
E	F-FWF-06020	8	FW 3/8 X 1-1/4, FENDER	ORIGINAL AXLE COVER
F	F-HC8-12C240	8	HC8 3/4-10 X 15	OVERCARRIAGE CLAMP
F	F-HNS-12C	8	HN8 3/4-10 STOVER	OVERCARRIAGE CLAMP
G	F-HC-16M110E	8	HC-10.9 M16 X 2.00 X 110	OVERCARRIAGE FRONT MOUNT
G	F-FWH-10	8	FW 5/8 HARDENED	OVERCARRIAGE FRONT MOUNT
H	F-UDS-#7X06	2	SCREW U-DRIVE, #7 X 3/8	SERIAL NUMBER PLATE
I	F-HCF-16M080E	4	FLHC-10.9 M16 X 2.00 X 80	TRANSMISSION
J	F-HC-08M060F	4	HC-8.8 M8 X 1.25 X 60	HYDRO & HDR LIFT CYL HOSE BRACKETS
J	F-HNF-08MF	4	FLHN-8.8 M8 X 1.25	HYDRO & HDR LIFT CYL HOSE BRACKETS
K	F-HNF-16ME	4	FLHN-10.9 M16 X 2.00	BTM & TOP TRANSMISSION MNT HOLES
NS	F-HCF-8M050E	2	FLHN-10.9 M8 X 1.25 X 50	BRAKELINE CLAMP
NS	F-HNF-08ME	2	FLHN-10.9 M8 X 1.25 PLT	BRAKELINE CLAMP
NS	F-PSL-04X48	2	SNAP LOCK PIN, 1/4-3	SHIPPING SPACER

Model 2970 Hillco Leveling System  
For Serial Numbers 2970-1301 thru 2970-1399

### 4 Y-BRACE

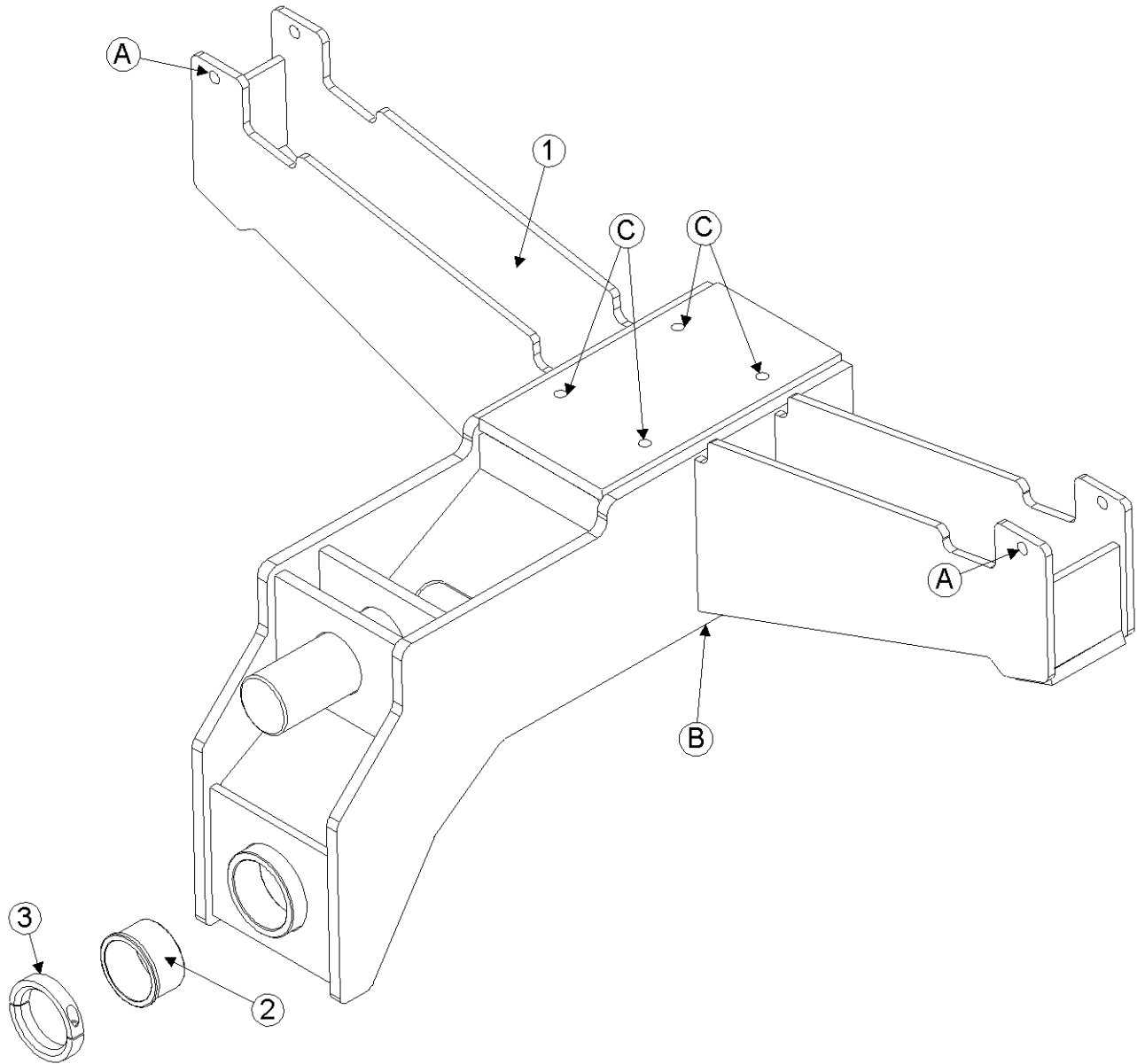


Model 2970 Hillco Leveling System  
For Serial Numbers 2970-1301 thru 2970-1399

<b>Y-BRACE COMPONENTS</b>				
<b>REF.</b>	<b>PART NO.</b>	<b>QTY.</b>	<b>PART NAME</b>	<b>NOTES</b>
1	LA-228703	2	YB ARM ASM	
2	LM-234101	1	YB COLLAR, PIVOT PIN	
3	LA-228762	1	YB PIN ASM, PIVOT	
4	LA-255361	1	YB SUPPORT ASM, CROSS	<i>FOR 60 SERIES COMBINES</i>
NS	LA-234931	1	YB SUPPORT ASM, CROSS	<i>FOR 50 SERIES COMBINES</i>
5	MC-135431	2	BUSHING, PLANE	
<b>Y-BRACE FASTENERS</b>				
<b>REF.</b>	<b>PART NO.</b>	<b>QTY.</b>	<b>PART NAME</b>	<b>WHERE USED</b>
A	F-HC-24M070E	2	HC-10.9 M24 X 3.00 X 70	Y-BRACE FRNT MNT
A	F-HNS-24ME	2	HN-10.9 M24 X 3.00 STOVER	Y-BRACE FRNT MNT
B	F-HCF-16M090F	4	FLHC-10.9 M16 X 2 X 90	Y-BRACE CROSS SUPPORT <i>FOR 60 SERIES COMBINES</i>
B	F-HNSF-16ME	4	FLHN 10.9 M16 X 2 STOVER FLNG	Y-BRACE CROSS SUPPORT <i>FOR 60 SERIES COMBINES</i>
NS	F-HC-12M040E	6	HC-10.9 M12 X 1.75 X 40	Y-BRACE CROSS SUPPORT <i>FOR 50 SERIES COMBINES</i>
NS	F-HNS-12ME	6	HN-10.9 M12 X 1.75 STOVER	Y-BRACE CROSS SUPPORT <i>FOR 50 SERIES COMBINES</i>
C	F-HC-24M110E	1	HC-10.9 M24 X 3.00 X 110	Y-BRACE REAR MNT
C	F-HNS-24ME	1	HN-10.9 M24 X 3.00 STOVER	Y-BRACE REAR MNT
D	F-HC-12M080E	1	HC-10.9 M12 X 1.75 X 80	Y-BRACE PVT PIN COLLAR
D	F-HNS-12ME	1	HN-10.9 M12 X 1.75 STOVER	Y-BRACE PVT PIN COLLAR
E	F-MB-18NR24	20	MACH BUSH 18GA NR 1-1/2" ID	Y-BRACE PVT PIN

Model 2970 Hillco Leveling System  
For Serial Numbers 2970-1301 thru 2970-1399

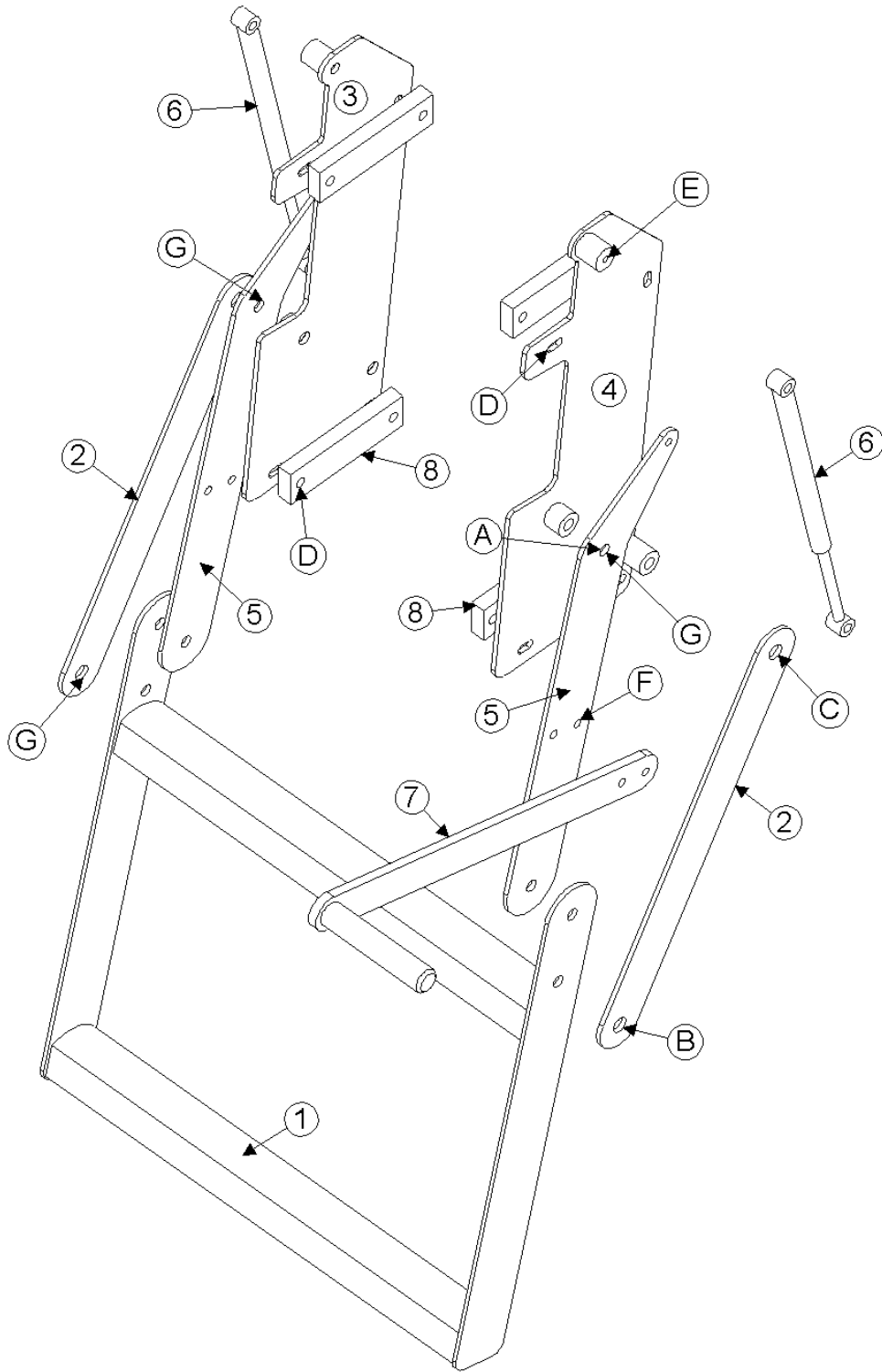
### 5 DROP AXLE



Model 2970 Hillco Leveling System  
For Serial Numbers 2970-1301 thru 2970-1399

<b>DROP AXLE COMPONENTS</b>				
REF.	PART NO.	QTY.	PART NAME	NOTES
1	LA-234971	1	DA ASM	
2	LP-235092	1	LM BUSHING, DA PIVOT	
3	LM-263711	1	LM COLLAR, CLAMPING 3-1/2" X 4-3/4"	
<b>DROP AXLE FASTENERS</b>				
REF.	PART NO.	QTY.	PART NAME	WHERE USED
A	F-HNS-16ME	2	HN-10.9 M16 X 2.00 STOVER	DROP AXLE WING
A	F-HC-16M190E	2	HC-10.9 M16 X 2.00 X 190	DROP AXLE WING
B	F-HC-16M250E	4	HC-10.9 M16 X 2.00 X 250	DROP AXLE LOWER PLATE
B	F-HNSF-16ME	4	HN-10.9 M16 X 2.00 STOVER, FLNG	DROP AXLE LOWER PLATE
C	F-HC-16M060E	4	HC-10.9 M16 X 2.00 X 60	DROP AXLE UPPER PLATE
C	F-HNS-16ME	4	HN-10.9 M16 X 2.00 STOVER	DROP AXLE UPPER PLATE

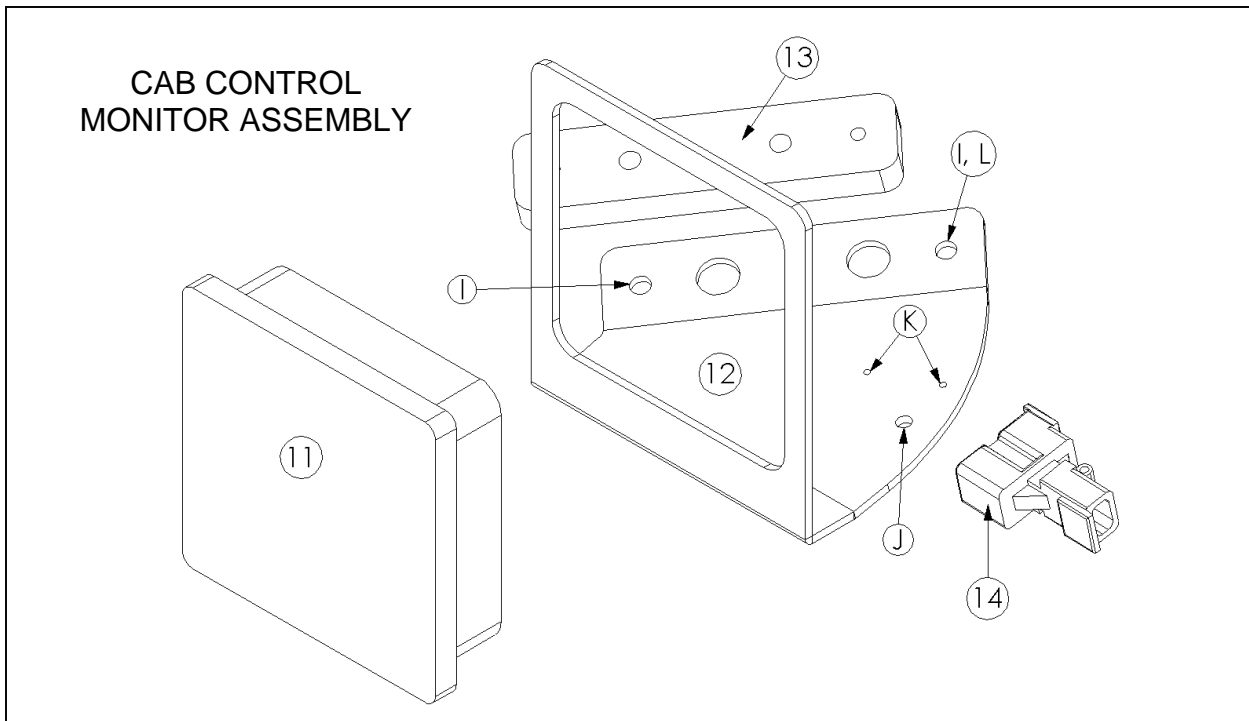
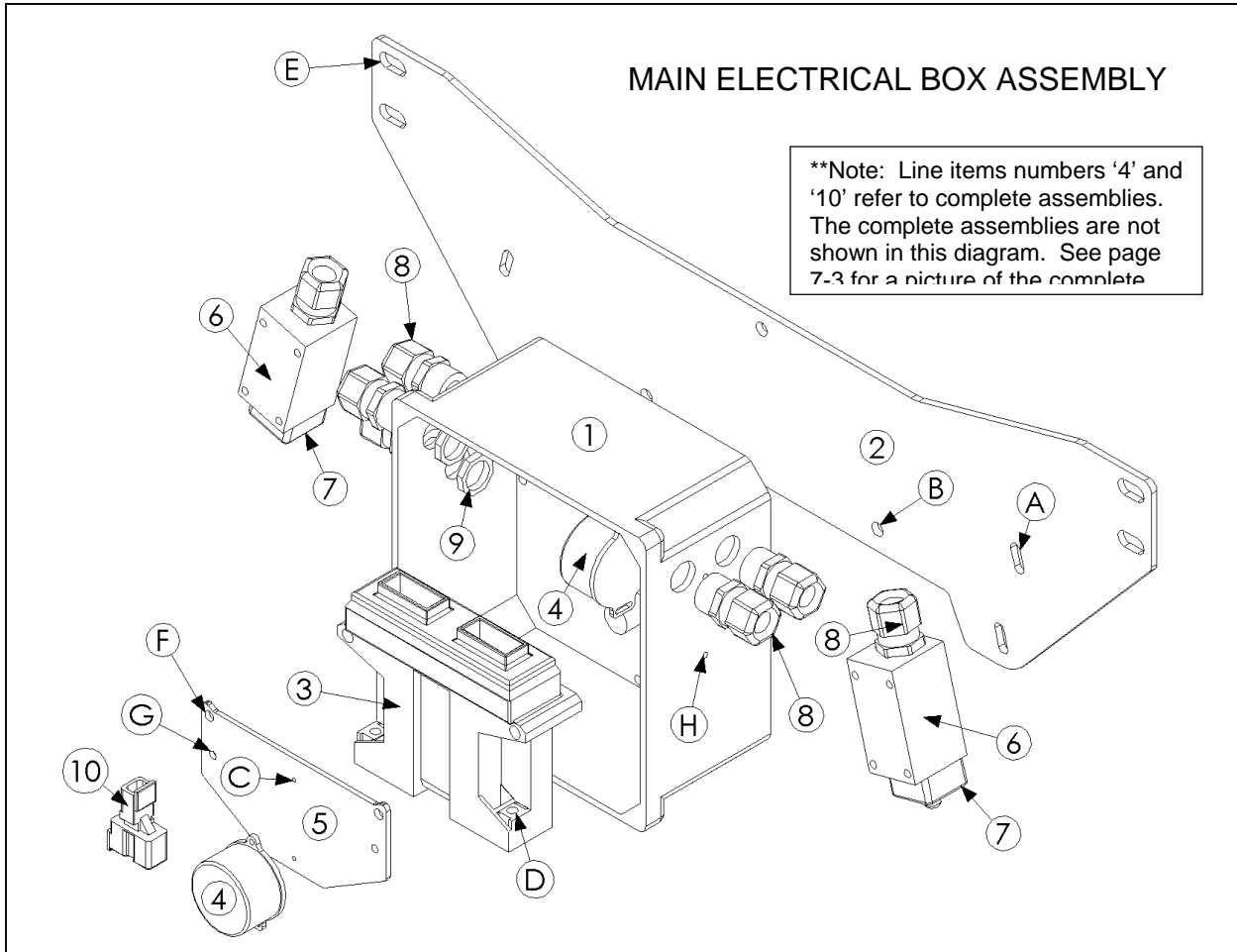
### 6 LADDER



Model 2970 Hillco Leveling System  
For Serial Numbers 2970-1301 thru 2970-1399

<b>LADDER COMPONENTS</b>				
<b>REF.</b>	<b>PART NO.</b>	<b>QTY.</b>	<b>PART NAME</b>	<b>NOTES</b>
1	LA-236563	1	LM STEP ASM, FOLDING LADDER LOWER	
2	LM-236054	2	LM PLT, FOLDING LADDER LINK	
3	LA-236542	1	LM PLT ASM, LFT SIDE FOLDING LADDER	
4	LA-236552	1	LM PLT ASM, RHT SIDE FOLDING LADDER	
5	LM-236634	2	LM PLT, UPPER ARM	
6	MC-134921	2	GAS CHARGED LIFT SUPPORT	
NS	MC-134931	2	LIFT SUPPORT BRACKETS (PAIR)	
7	LA-238761	1	LM ASM, LADDER HANDLE	
8	LM-241271	4	LM FLT, LADDER SPACER	
<b>LADDER FASTENERS</b>				
<b>REF.</b>	<b>PART NO.</b>	<b>QTY.</b>	<b>PART NAME</b>	<b>WHERE USED</b>
A	F-HC-12M050F	2	HC-8.8 M12 X 1.75 X 50	LADDER TOP SIDE PLATE PIVOT
A	F-HNS-12ME	2	HN-10.9 M12 X 1.75 STOVER	LADDER PIVOTS
B	F-HC-12M030F	4	HC-8.8 M12 X 1.75 X 30	LADDER MIDDLE PIVOTS
B	F-HNS-12ME	4	HN-10.9 M12 X 1.75 STOVER	LADDER PIVOTS
C	F-HC-12M065F	2	HC-8.8 M12 X 1.75 X 65	LADDER BOTTOM SIDE PLT PIVOTS
C	F-HNS-12ME	2	HN-10.9 M12 X 1.75 STOVER	LADDER PIVOTS
D	F-HC-08M035F	8	HC-8.8 M8 X 1.25 X 35	LADDER SIDE PLATE MOUNTS
D	F-HNF-08MF	8	FLHN 8.8 M8 X 1.25	LADDER SIDE PLATE MOUNTS
E	F-HNJ-05C	2	HN5 5/16-18 JAM NUT	LADDER BALL STUD
E	F-LW-05	2	LW 5/16	LADDER BALL STUD
F	F-HC-08M025F	2	HC-8.8 M8 X 1.25 X 25	LADDER HANDLE
F	F-HNF-08MF	2	FLHN 8.8 M8 X 1.25	LADDER HANDLE
G	F-FWH-08	8	FW, HD 1/2	ALL PIVOTS

### 7 ELECTRICAL COMPONENTS





Model 2970 Hillco Leveling System  
For Serial Numbers 2970-1301 thru 2970-1399

<b>ELECTRICAL COMPONENTS</b>				
<b>REF.</b>	<b>PART NO.</b>	<b>QTY.</b>	<b>PART NAME</b>	<b>NOTES</b>
ASM	LA-265591	1	EM ASM, CONTROLLER	
1	LM-260301	1	EM BOX, CONTROLLER MOUNT	
2	LP-234653	1	EM MOUNT, CONTROL BOX	
3	LA-260092	1	CONTROLLER	
4	LA-261191	2	EM ASM, CLINOMETER	**SEE NOTE BELOW DIAGRAM
5	LM-255331	1	EM SHT, CLINOMETER MOUNT	
6	EC-100557	2	BODY, LIMIT SWITCH	
7	EC-100692	2	HEAD, LIMIT SWITCH STR PLUNGER	
8	EC-138781	7	STRAIN RELIEF, NYLON, BLK, 1/2 NPT	
9	EC-142121	5	STRAIN RELIEF NUT, 1/2" NYLON, BLK	
10	LA-265831	1	EM WIRE ASM, Y-CONNECTOR	**SEE NOTE BELOW DIAGRAM
<b>ELECTRICAL FASTENERS</b>				
<b>REF.</b>	<b>PART NO.</b>	<b>QTY.</b>	<b>PART NAME</b>	<b>WHERE USED</b>
A	F-PHM-#10C28	4	PHMS 10-24 X 1-3/4	LIMIT SWITCH MNT
A	F-HNF-#10C	4	HN 10-24, FLNG, SERR	LIMIT SWITCH MNT
B	F-HC5-04C12	3	HC5 1/4-20 X 3/4	PVC BOX TO BRACKET
B	F-LW-04	3	LW 1/4	PVC BOX TO BRACKET
C	F-PHM-#6C06	2	PHMS #6-32 X 3/8	CLINOMETER MNT TO PLATE
D	F-PHM-04C24	2	PHMS 1/4-20 X 1-1/2	CONTROLLER TO PVC BOX
D	F-HNF-04C	2	FLHN 1/4-20, SERR	CONTROLLER TO PVC BOX
E	F-PHM-04C36	2	PHMS 1/4-20 X 2-1/4	GROUNDING PLATE MOUNTING
E	F-HNF-04C	2	FLHN 1/4-20, SERR	GROUNDING PLATE MOUNTING
F	F-PHM-#10C16	1	PHMS 10-24 X 3/4	GROUNDING PLATE GROUND
F	F-HNF-#10C	1	HN5 10-24, FLNG, SERR	GROUNDING PLATE GROUND
F	F-HN-#10C	3	HN5 10-24	GROUNDING PLATE GROUND
G	F-PHM-#10C16	1	PHMS 10-24 X 1	Y-CONNECTOR TO GROUND
H	F-PHM-#6C08	2	PHMS #6-32 X 1/2	CLINOMETER MNT TO BOX
H	F-HNF-#6C	1	FLHN #6-32 SERR.	CLINOMETER MNT TO BOX
<b>CAB CONTROL MONITOR</b>				
<b>REF.</b>	<b>PART NO.</b>	<b>QTY.</b>	<b>PART NAME</b>	<b>NOTES</b>
11	LA-265781	1	GRAPHICAL TERMINAL, S-D DP200	MOUNTING BRACKET, GASKET AND SCREWS, INCLUDED
12	LM-265501X	1	EM MOUNT, DISPLAY	
13	LM-265511X	1	EM MOUNT, DISPLAY SPACER	
NS	EC-146481	1	BUZZER, PIEZO ELECTRIC	
<b>CAB CONTROL MONITOR FASTENERS</b>				
<b>REF.</b>	<b>PART NO.</b>	<b>QTY.</b>	<b>PART NAME</b>	<b>NOTES</b>
I	F-HCF-06M016E	2	FLHC-10.9 M6 X 1.0 X 16	GRAPHICAL TERMINAL MOUNTING
J	F-PHM-#10C08	1	PHMS 10-24 X 1/2	Y-CONNECTOR MOUNTING
J	F-HN-#10C	1	HN5 10-24	Y-CONNECTOR MOUNTING
K	F-HN-#2C	2	HN #2-56	FASTEN PIEZO BUZZER TO MONITOR MOUNT
K	F-PHM-#2C05	2	PHMS #2-56 X 5/16	FASTEN PIEZO BUZZER TO MONITOR MOUNT
L	EC-142101	1	CLAMP, HOSE 3/8" R/C W/ 3/8 HOLE	ELECTRICAL CABLE SUPPORT IN CAB

**ELECTRICAL CABLES**



**#1** 265771  
EM CABLE ASM,  
LIMIT SWITCH



**#2** LA-261191  
EM ASM,  
CLINOMETER



**#3** LA-265831  
EM WIRE ASM, Y-CONNECTOR



**#4** LA-260272  
EM CABLE ASM, MANIFOLD



**#5** LA-255643  
EM CABLE ASM, BOX TO VALVE



**#6** LA-265771  
EM CABLE ASM, POWER & GROUND



**#7** LA-265581  
EM CABLE ASM, CAB TO BOX



**#8** LA-265791  
EM CABLE ASM, BUZZER



**#9** LA-260222  
EM CABLE ASM, TRIM

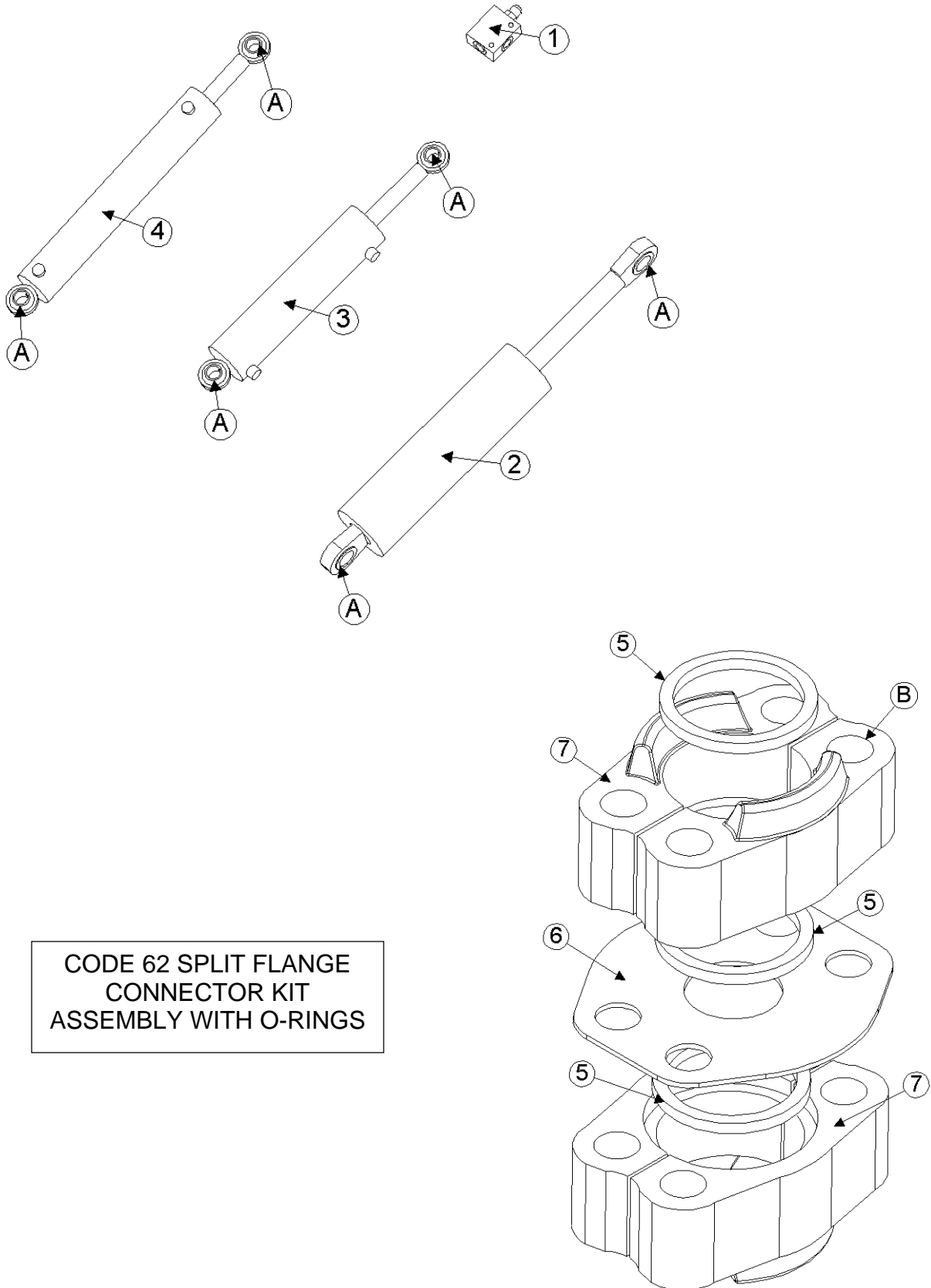


**#10** LA-260242  
EM CABLE ASM, TRIM

Model 2970 Hillco Leveling System  
For Serial Numbers 2970-1301 thru 2970-1399

<b>CABLE ASSEMBLIES</b>				
REF.	PART NO.	QTY.	PART NAME	NOTES
<b>FOR ALL COMBINES</b>				
1	LA-255631	2	EM CABLE ASM, LIMIT SWITCH	
2	LA-261191	1	EM ASM, CLINOMETER	
3	LA-265831	1	EM WIRE ASM, Y-CONNECTOR	
4	LA-260272	1	EM CABLE ASM, MANIFOLD	
..	LA-263591	1	EM CABLE ASM, LEVELING MANIFOLD	<i>INCLUDED IN LA-260272</i>
5	LA-255643	1	EM CABLE ASM, BOX TO VALVE	
6	LA-265771	1	EM CABLE ASM, POWER & GROUND	
7	LA-265581	1	EM CABLE ASM, CAB TO BOX	
8	LA-265791	1	EM CABLE ASM, BUZZER	
<b>FOR COMBINES WITH HIC MANIFOLD:</b>				
9	LA-260222	1	EM CABLE ASM, TRIM SIGNAL	
<b>FOR COMBINES WITH Z STACK VALVE</b>				
10	LA-260242	1	EM CABLE ASM, TRIM SIGNAL	

### 8 HYDRAULICS

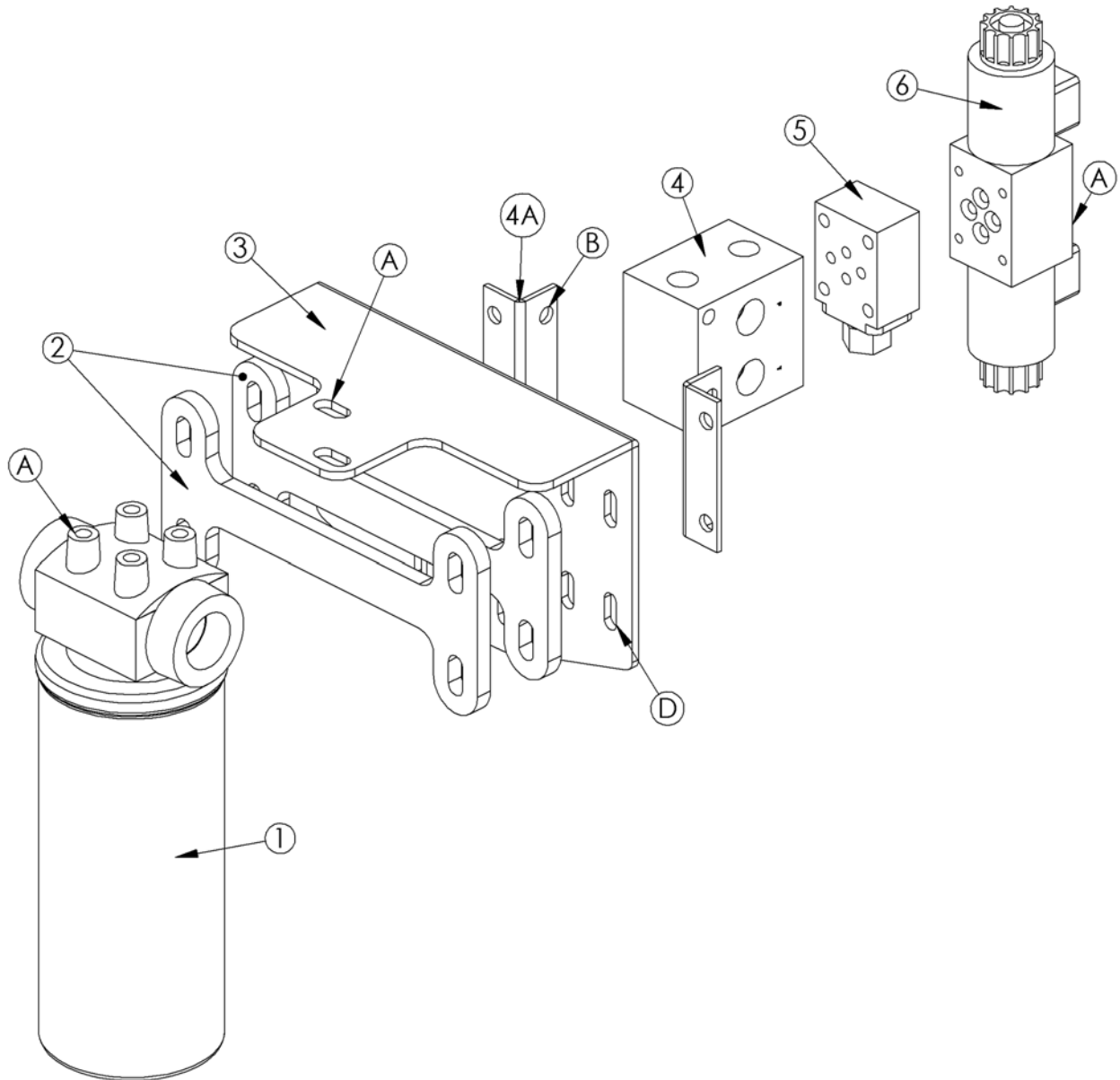


CODE 62 SPLIT FLANGE  
CONNECTOR KIT  
ASSEMBLY WITH O-RINGS

Model 2970 Hillco Leveling System  
For Serial Numbers 2970-1301 thru 2970-1399

<b>COUNTERBALANCE VALVE AND CYLINDERS</b>				
<b>REF.</b>	<b>PART NO.</b>	<b>QTY.</b>	<b>PART NAME</b>	<b>NOTES</b>
1	HC-139151	2	COUNTERBALANCE VALVE, 3 PORT	
..	HC-139181	2	BODY, COUNTERBALANCE VALVE	
..	HC-139161	2	CARTRIDGE, COUNTERBALANCE VALVE	
NS	HC-140361	2	SEAL KIT, COUNTERBALANCE VALVE	
2	HC-103227	2	CYLINDER, MAIN	
NS	HC-134251	2	SEAL KIT, MAIN CYLINDER	
3	HC-101842	1	CYLINDER, MASTER	
NS	HC-134201	1	SEAL KIT, MASTER CYLINDER	
4	HC-100706	1	CYLINDER, SLAVE, 2-1/2 X 12-1/2	
NS	HC-134191	1	SEAL KIT, SLAVE CYLINDER	
<b>CODE 62 SPLIT FLANGE CONNECTOR KIT ASSEMBLY</b>				
ASM	HC-101843	2	CODE 62 SLT FLNG CONNECTOR KIT WITH O-RINGS	FWD AND REAR PROPULSION HOSE
5	HC-134911	6	O-RING, CODE 62 CONNECTOR	
6	HC-137891	2	PLATE, CODE 62	
7	HC-137901	4	CODE 62, #16 SPLIT FLANGE KIT	
<b>HYDRAULIC FASTENERS</b>				
<b>REF.</b>	<b>PART NO.</b>	<b>QTY.</b>	<b>PART NAME</b>	<b>WHERE USED</b>
A	F-SSS-04F04	8	SET SCREW, SOCKET 1/4-28 X 1/4	ALL CYLINDERS
B	F-HC8-07C44	8	HC8 7/16 X 2-3/4	CODE 62 SPLIT FLANGE KIT
B	F-HN8-07C	8	HN8 7/16-14	CODE 62 SPLIT FLANGE KIT

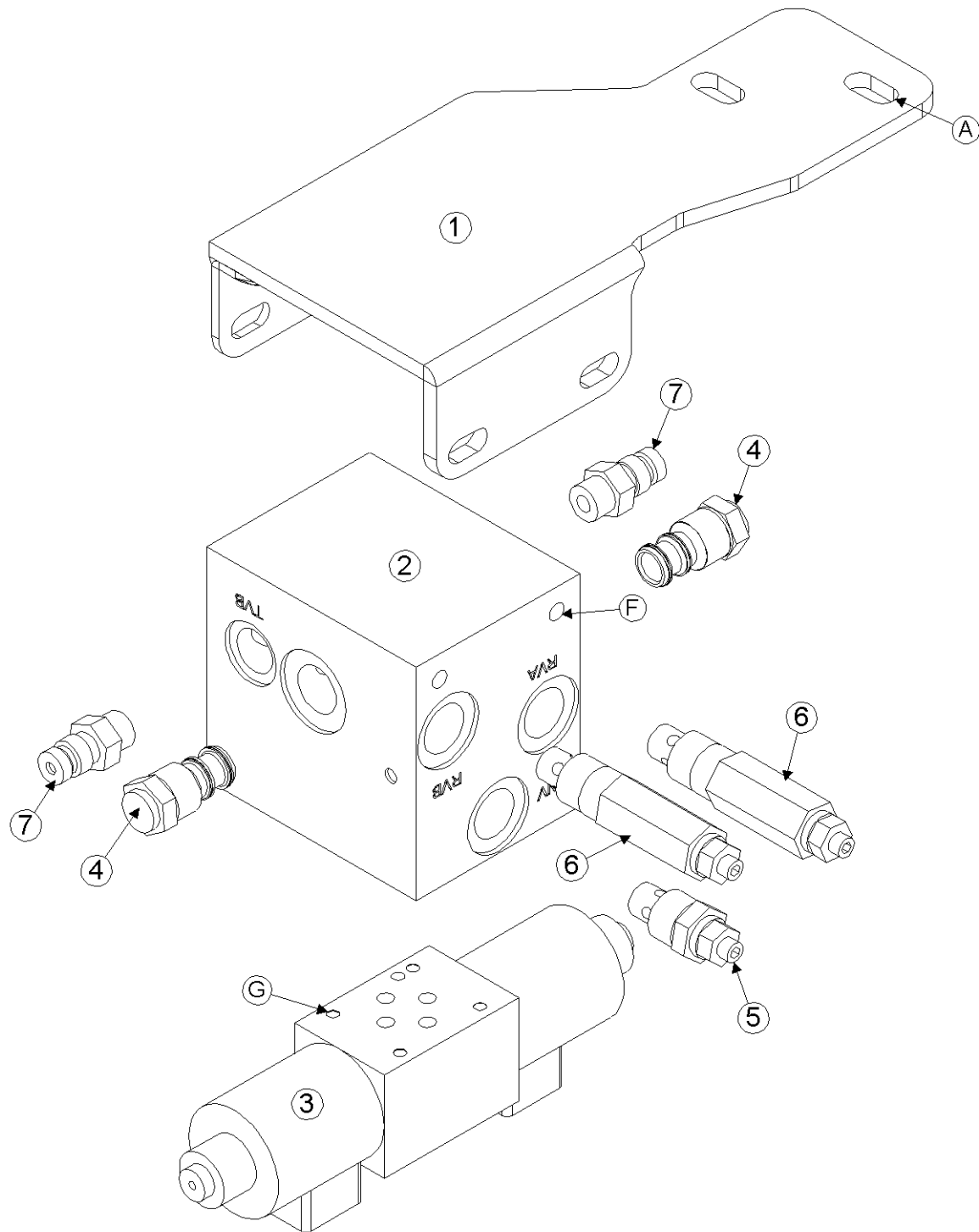
Model 2970 Hillco Leveling System  
For Serial Numbers 2970-1301 thru 2970-1399  
**HYDRAULIC LEVELING MANIFOLD**



Model 2970 Hillco Leveling System  
For Serial Numbers 2970-1301 thru 2970-1399

<b>LEVELING MANIFOLD COMPONENTS</b>				
<b>REF.</b>	<b>PART NO.</b>	<b>QTY.</b>	<b>PART NAME</b>	<b>NOTES</b>
1	HC-143441	1	FILTER ASM, OIL	RETURN LINE TO TANK
2	LP-263321	2	PLATE, BACKING	
3	LP-263312	1	HM PLT, MANIFOLD MNT	
4	HC-138861	1	MANIFOLD, SINGLE STATION	
4A	..	2	BRACKETS, MANIFOLD	
5	HC-101264	1	LOAD SENSE SHUTTLE ASM	
..	HC-101021	1	CARTRIDGE, LOAD SENSE VALVE	
..	HC-101022	1	BODY, LOAD SENSE VALVE	
NS	HC-102082	1	SEAL KIT, LOAD SENSE SHUTTLE ASM	
6	HC-140411	1	VALVE, DIRECTIONAL CONTROL, PROPORTIONAL	
NS	HC-142731	1	SEAL KIT, DIRECTIONAL CONTROL VALVE	
NS	HC-140291	2	PLUG, DIN	
NS	HC-142971	2	GASKET, DIN CONNECTOR	
<b>LEVELING MANIFOLD FASTENERS</b>				
<b>REF.</b>	<b>PART NO.</b>	<b>QTY.</b>	<b>PART NAME</b>	<b>WHERE USED</b>
A	F-HCF-10M020E	2	FLHC-10.9 M10 X 1.50 X 20	FILTER HOUSING TO MOUNTING BRACKET
B	F-HCF-08M035E	4	FLHC-10.9 M8 X 1.25 X 35	MOUNTING BRACKET TO CHASSIS
B	F-HNF-8ME	4	FLHN-10.9 M8X1.25	MOUNTING BRACKET TO CHASSIS
C	F-SHC-#10C52	4	SHCS 10-24 X 3-1/4	LEVELING STATION OF MANIFOLD
C	F-LW-#10	4	LW #10	LEVELING STATION OF MANIFOLD
D	F-HCF-05C08	8	FLHC 5/16-18 X1/2	MANIFOLD TO MANIFOLD MOUNT

Model 2970 Hillco Leveling System  
For Serial Numbers 2970-1301 thru 2970-1399  
**HYDRAULIC TRIM MANIFOLD**

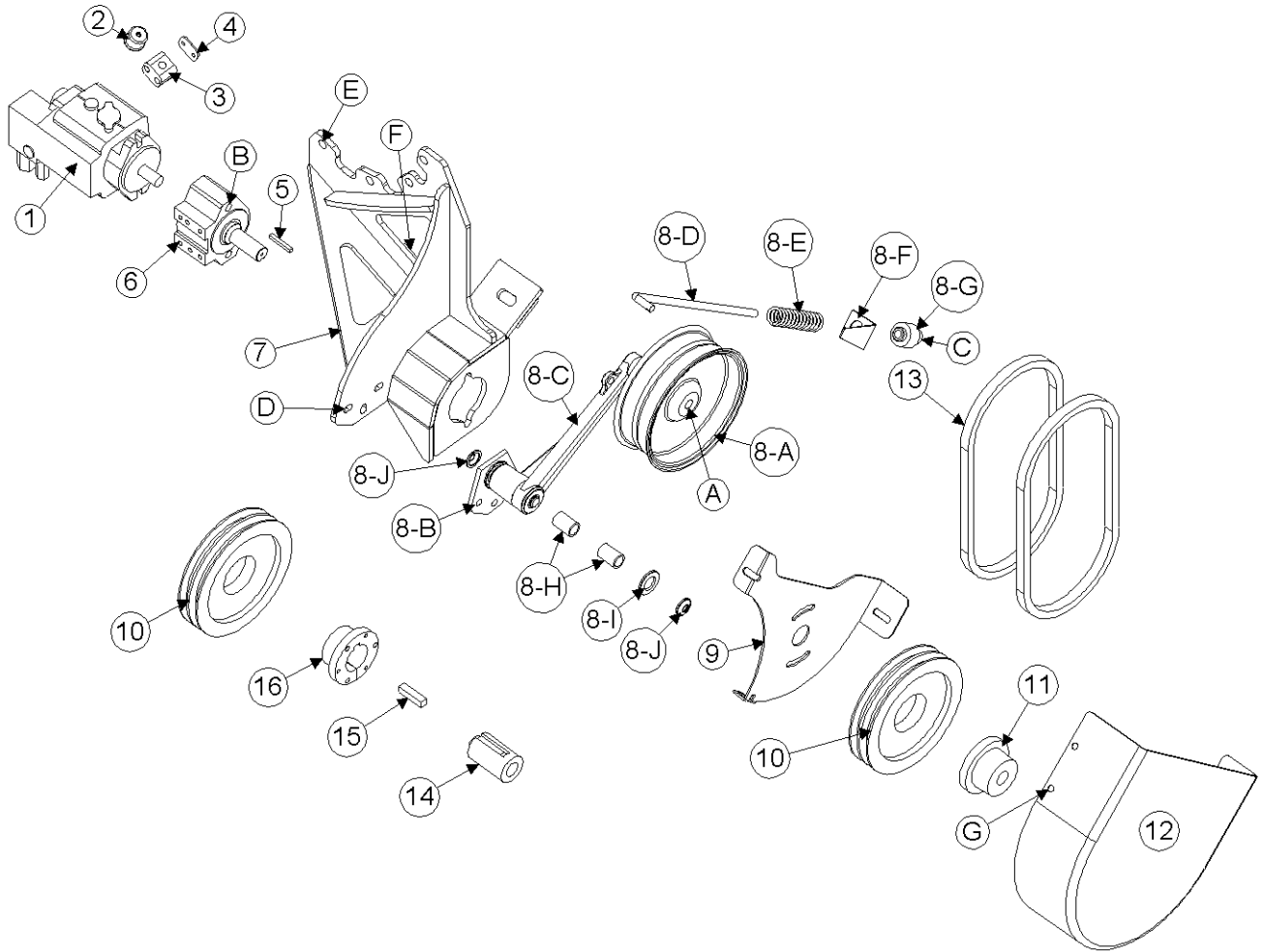




Model 2970 Hillco Leveling System  
For Serial Numbers 2970-1301 thru 2970-1399

<b>TRIM MANIFOLD COMPONENTS</b>				
REF.	PART NO.	QTY.	PART NAME	NOTES
<b>FOR COMBINES WITH SERIAL NUMBERS: 9650 STS (ALL); 9750 STS (ALL); 9660 STS ( -715400); 9760 STS ( -715500); 9860 STS ( -715600)</b>				
ASM	LA-263722	1	MANIFOLD ASM, TRIM	
<b>FOR COMBINES WITH SERIAL NUMBERS: 9660 STS (715401- ); 9760 STS (715501- ); 9860 STS (715601- )</b>				
ASM	LA-263661	1	MANIFOLD ASM, TRIM	
<b>FOR ALL COMBINES</b>				
1	LA-263521	1	HM ASM, MOUNT (TRIM MANIFOLD)	
2	HC-145441	1	MANIFOLD, CUSTOM TRIM	
3	HC-143011	1	VALVE, DIRECTIONAL CONTROL, BANG/BANG	
4	HC-145431	2	RELIEF, POPPET DIRECT ACTING	SET AT 1800 PSI
5	HC-145501	1	VALVE, NEEDLE	
6	HC-145511	2	PILOT OPERATED CHECK	
7	HC-143991	2	HYDRAULIC QUICK-CONNECT COUPLER AH125760	
<b>TRIM MANIFOLD FASTENERS</b>				
REF.	PART NO.	QTY.	PART NAME	WHERE USED
A	F-HCF-10M030E	2	FLHC 10.9 M10 X 1.50 X 30 PLT	TRIM MANIFOLD MOUNT
A	F-HNF-10ME	2	FLHN-10.9 M10 X 1.50 PLT	TRIM MANIFOLD MOUNT
B	F-HCF-05C08	8	FLHC 5/16-18 X1/2	MANIFOLD TO MANIFOLD MOUNT
C	F-SHC-#10C32	4	SHCS 10-24 X 2	DIRECTIONAL CONTROL TO MANIFOLD
C	F-LW-#10	4	LW #10	DIRECTIONAL CONTROL TO MANIFOLD

Model 2970 Hillco Leveling System  
For Serial Numbers 2970-1301 thru 2970-1399  
**HYDRAULIC PUMP**



Model 2970 Hillco Leveling System  
For Serial Numbers 2970-1301 thru 2970-1399

<b>PUMP DRIVE COMPONENTS</b>				
<b>REF.</b>	<b>PART NO.</b>	<b>QTY.</b>	<b>PART NAME</b>	<b>NOTES</b>
1	HC-133151	1	PUMP, HYDRAULIC PFC-116	
NS	HC-135231	1	SEAL KIT, PUMP	
..	HC-135241	1	SEAL, PUMP MAIN SHAFT	
..	HC-135251	2	SEAL, PINTLE SHAFT	
..	HC-103099	1	COMPENSATOR #2	
..	HC-137061	1	KEY, HYDRAULIC PUMP SHAFT	
2	HC-143251	1	METAL FILTER BREATHER, 10 MICRON	
3	HC-145881	1	BEHRINGER STANDARD CLAMP, 0.5" DIAMETER	
4	HC-145891	1	BEHRINGER STANDARD COVER PLATE	
5	LS-235291	1	HM PUMP DR, OHLA KEY	
6	HC-141531	1	ADAPTER, OVER-HUNG LOAD	
NS	LA-259551	1	REBUILD KIT, 300 OHLA	
7	LA-263431	1	HM ASM, MOUNT (PFC PUMP)	
ASM	LA-263371	1	IDLER ASM	
8-A	MC-145571	1	IDLER JD P# AH204389	INCLUDED IN LA-263371
8-B	MC-145531	1	PIN, PIVOT ASM	INCLUDED IN LA-263371
8-C	MC-145521	1	ARM JD P# AH202772	INCLUDED IN LA-263371
8-D	MC-145581	1	HOOK BOLT JD P# H118948	INCLUDED IN LA-263371
8-E	MC-145601	1	SPRING, COMPRESSION JD P# H26552	INCLUDED IN LA-263371
8-F	MC-145841	1	GUAGE, SPRING TENSION	INCLUDED IN LA-263371
8-G	MC-145591	1	PIVOT JD P# H170141	INCLUDED IN LA-263371
8-H	MC-145541	2	BUSHING JD P# H171061	INCLUDED IN LA-263371
8-I	MC-145551	1	WASHER, METALIC, ROUND HOLE	INCLUDED IN LA-263371
8-J	MC-145561	2	SEAL JD P# AA5607R	INCLUDED IN LA-263371
9	LP-264081	1	HM PLT, MOUNT CAP	
10	MC-103069	1	8.5" 2 GROOVE 5VX SHIEVE	COMBINE DRIVE SHAFT
11	MC-103071	1	BUSHING 1IN	
12	MC-145851	1	CAP, CHOPPER DRIVE	PUMP DRIVE SHIEVE
13	MC-145781	2	BELT, 5VX750	PUMP DRIVE
NS	LA-260401	1	OHLA SYNTHETIC OIL (I5068)	2.5mL
14	LA-263821	1	HM, DRIVER ASM, PFC PUMP	
15	LS-263861	1	HM KEY, PUMP DRIVE HUB	
16	MC-103114	1	HUB, SK-1-15/16	COMBINE DRIVE SHAFT
<b>PUMP DRIVE FASTENERS</b>				
<b>REF.</b>	<b>PART NO.</b>	<b>QTY.</b>	<b>PART NAME</b>	<b>WHERE USED</b>
A	F-HCF-16M080E	1	FLHC-10.9 M16 X 2.0 X 80	IDLER PULLEY TO IDLER ARM
B	F-HCF-10M120E	2	FLHC-10.9 M10 X 1.50 X 120 PLT	PUMP/OHLA TO BRACKET
B	F-HNF-10ME	2	FLHN-10.9 M10 X 1.50	PUMP/OHLA TO BRACKET
C	F-FWH-10	2	FW 5/8 HARD	IDLER PULLEY TO ARM & TENSIONER BOLT TO SPRING
C	F-FWH-08	1	FW 1/2 HARD	TENSIONER BOLT TO ARM
C	F-SRE-14E	1	E-STYLE RETAINING RING 7/8 SHAFT	IDLER ASM
C	F-PCT-02X16	1	PIN, COTTER 1/8 X 1	IDLER TENSION BOLT
C	F-HNJ-12MF	1	HN- 8.8 M12 X 1.75 JAM	IDLER TENSION BOLT
C	F-HNF-12ME	1	FLHN-10.9 M12 X 1.75 PLT	IDLER TENSION BOLT
D	F-HNF-10ME	3	FLHN-10.9 M10 X 1.50 PLT	IDLER TO MOUNT
D	F-HCF-10M030E	4	FLHC-10.9 M10 X 1.50 X 30	IDLER TO MOUNT
E	MC-145821	4	FLHC-10.9 M12 X 1.75 X 90	PUMP MOUNTING ASM TO ROTOR DRIVE GEAR CASE
F	F-HC5-04C24	2	HC5 1/4-20 X 1-1/2	
G	F-HCF-8M020F	3	FLHC-10.9 M8 X 1.25 X 20	CAP TO MOUNT BRACKET
G	F-HNF-08ME	3	FLHN 10.9 M8 X 1.25	CAP TO MOUNT BRACKET

Model 2970 Hillco Leveling System  
For Serial Numbers 2970-1301 thru 2970-1399

**HYDRAULIC HOSES**

REF.	PART NO.	QTY.	PART NAME	WHERE USED
<b>MAIN LEV CYLINDERS</b>				
NS	LA-140071	2	1/4 100R2 HOSE 79-1/2" #6 FORS 90° X #6 FORS STR	LH & RH POCV #3 TO LH OR RH POCV #2
NS	LA-140081	2	1/2 100R2 HOSE 70-1/2" #8 FORS STR X #8 FORS STR	LH OR RH ROD TO POCV #2
<b>GREASE HOSES</b>				
NS	LA-140091	1	3/16 R1 GREASE HOSE 95-3/4" 1/8 MPT X 1/8 MPT	LH MAIN LEV CYL BASE TO BH #1
NS	LA-140101	1	3/16 R1 GREASE HOSE 48" 1/8 MPT X 1/8 MPT	RH MAIN LEV CYL BASE TO BH #2
NS	LA-140111	1	3/16 R1 GREASE HOSE 64" 1/8 MPT X 1/8 MPT	MASTER BASE TO BH #3
NS	LA-140121	1	3/16 R1 GREASE HOSE 26" 1/8 MPT X 1/8 MPT	MASTER ROD TO BH #4
NS	LA-138962	1	3/16 R1 GREASE HOSE 61" 1/8 MPT X 1/8 MPT	MAIN PIVOT TO BH #5
NS	LA-145901	1	3/16 R1 GREASE HOSE 10" 1/8 MPT X 1/8 FPT	OHLA BREATHER
<b>BRAKES</b>				
NS	LA-130371	1	#4 TITE FLEX #4 FORS X #4 MORS	BRAKE HOSE RIGHT
NS	LA-130371	1	#4 TITE FLEX #4 FORS X #4 MORS	BRAKE HOSE LEFT
NS	HA-133131	2	TEFLON O-RING	FOR ABOVE TWO BRAKE HOSES
<b>MANIFOLD TO LEFT LEV CYL</b>				
NS	LA-139522	1	1/2 100R2 HOSE 186" #8 FORS X #8 FORS	LEVELING VALVE PORT A & B TO LEFT MAIN LEV CYL
NS	LA-140132	1	1/2 100R2 HOSE 241" #8 FORS X #8 FORS	LEVELING VALVE PORT A & B TO RIGHT MAIN LEV CYL
<b>MANIFOLD TO PUMP</b>				
NS	LA-134821	1	1/4 100R2 HOSE 167" #4 FORS X #4 FORS 90	LOAD SENSE LINE
NS	LA-134831	1	3/4 100R2 HOSE 167" #10 FORS X #10 FORS	PRESSURE FROM PUMP TO MANIFOLD
NS	LA-134841	1	3/4 100R1 HOSE 39-1/2" #10 FORS X #12 FORS 90°	RETURN LINE
NS	LA-263571	1	1" 100R1 HOSE 36" #16 FORS X #16 FORS 90°	RETURN LINE FROM FILTER OUTLET TO RESERVOIR
NS	LA-263562	1	3/4" 100R1 HOSE 30" #12 FORS X #12 FORS 45°	MANIFOLD "T" PORT TO FILTER INLET
<b>PUMP</b>				
NS	LA-134862	1	1 100R1 HOSE 66-1/2" #16 FORS X #16 FORS	PUMP SUCTION
NS	LA-134872	1	3/8 100R2 HOSE 65-1/2" #6 FORS X #6 FORS 90°	PUMP CASE DRAIN TO RESEVOIR
NS	HC-145861	1	1/2" HEATER HOSE 2-3/4" (NO ENDS)	IDLER ASM
<b>HYDROSTAT</b>				
NS	LA-140381	1	1 100R15 68" CODE 62 SLT FLNG 180° X CODE 62 SPLT FLNG STR	HYDROSTAT FRONT
NS	LA-140391	1	1 100R15 58" CODE 62 SLT FLNG 180° X CODE 62 SPLT FLNG STR	HYDROSTAT REAR
NS	LA-143851	1	3/4 100R1 HOSE 58-1/2" #12 MORS X #12 FORS 45°	HYDRO MOTOR CASE DRAIN
<b>TRIM HOSES</b>				
NS	LA-139113	2	1/4" 100R2 147" #4 FORS X #4 FORS	TRIM VALVE TO RELIEF VALVE
NS	LA-139141	2	1/4" 100R2 110-1/2" #4 FORS X #4 FORS	MASTER TO TEE
NS	LA-139531	1	1/4" 100R2 295" #4 FORS X #6 FORS	RELIEF TO SLAVE BASE
NS	LA-139541	1	1/4" 100R2 309" #4 FORS X #6 FORS	RELIEF TO SLAVE ROD

Model 2970 Hillco Leveling System  
For Serial Numbers 2970-1301 thru 2970-1399  
**HYDRAULIC HOSES (CONTINUED)**

<b>OPTIONAL-FOR COMBINES WITH CONTOUR MASTER</b>				
NS	HA-E-4MF	1	#4 MORS PLUG	
NS	HA-E-6MF	1	#6 MORS PLUG	
NS	LM-254781	1	LM FLAT, CM BAR	
<b>FOR COMBINES WITH SERIAL NUMBERS: 9650 STS (ALL); 9750 STS (ALL); 9660 STS ( -715400); 9760 STS ( -715500); 9860 STS ( -715600)</b>				
NS	LA-145751	1	1/2" 100R2 42" #8 FORS X #10 FORS	STACK VALVE TO "P" PORT OF TRIM MAINFOLD
NS	LA-145761	1	1/2" 100R1 46" #8 FORS X #10 FORS	STACK VALVE TO "T" PORT OF TRIM MANIFOLD
NS	LA-134862	1	1" 100R16 (1M2T) HOSE 71" #16 FORS X #16 FORS 90°	PUMP SUCTION
NS	LA-134822	1	1/4" 100R2 HOSE 63" #4 FORS X #4 FORS 90°	LOAD SENSE LINE
NS	LA-134832	1	3/4" 100R12 HOSE 54" #12 FORS X #12 FORS	PRESSURE FROM PUMP TO MANIFOLD
<b>FOR COMBINES WITH SERIAL NUMBERS: 9660 STS (715401- ); 9760 STS (715501- ); 9860 STS (715601- )</b>				
NS	LA-263411	2	1/4" 100R2 55" #4FORS X #4FORS 90°	HIC TO "P" & "T" PORTS OF TRIM MAINFOLD
NS	LA-145741	1	1" 100R16 (1M2T) HOSE 62" #16 FORS X #16 FORS 90°	PUMP SUCTION
NS	LA-145721	1	1/4" 100R2 HOSE 79" #4 FORS X #4 FORS 90°	LOAD SENSE LINE
NS	LA-145731	1	3/4" 100R12 HOSE 70" #12 FORS X #12 FORS	PRESSURE FROM PUMP TO MANIFOLD

Model 2970 Hillco Leveling System  
For Serial Numbers 2970-1301 thru 2970-1399

**HYDRAULIC ADAPTERS**

REF.	PART NO.	QTY.	PART NAME	WHERE USED
<b>MAIN CYLINDERS</b>				
NS	HA-L-4MF6MO	2	#4 MORS X #6 MORB 90°	
NS	HA-L-8FF8MF	2	#8 FORS X #8 MORS 90°	LEFT & RIGHT POCV #2
NS	HA-L-8MO8MO	2	#8 MORB X #8 MORB 90°	LEFT & RIGHT POCV #1
NS	HA-T-8MO8MO	2	#8 MORB X #8 MORS STR THREAD RUN TEE	LEFT & RIGHT POCV #2
NS	HA-Q-8MF8MO	2	#8 MORB X #8 MORS STR THREAD BRANCH TEE	LEFT & RIGHT MAIN CYL ROD
NS	HA-L-6MF6MO	2	#6 MORB X #6 MORS 90°	LEFT & RIGHT POCV #3
NS	HA-S-8FF6MF	2	#8 FORS X #6 MORS REDUCER	LEFT & RIGHT POCV #2
<b>MASTER AND SLAVE CYLINDER</b>				
NS	HA-L-4MF6MO	2	#4 MORS X #6 MORB 90°	MASTER CYL ROD AND BASE PORTS
NS	HA-L-6MF6MO	2	#6 MORS X #6 MORB 90°	SLAVE CYL ROD AND BASE PORTS
<b>PUMP ADAPTERS</b>				
NS	HA-S-12MO16MF	1	#12 MORB X #16 MORS STR	PUMP SUCTION
NS	HA-T-16MF16MO	1	#16 MORB X #16 MORS STR THREAD RUN TEE	PUMP SUCTION AT RESEVOIR
NS	HA-L-16FF16MF	1	#16 MORS X #16 FORS 90°	PUMP SUCTION AT RESEVOIR
NS	HA-S-10MF10MO	1	#10 MORB X #10 MORS STR	PUMP PRESSURE
NS	HA-L-10MO12MF	1	#10 MORB X #12 MORS 90°	PUMP PRESSURE
NS	HA-T-6MF6MO	1	#6 MORB X #6 MORS STR THREAD RUN TEE	CASE DRAIN AT RESEVOIR
NS	HA-C-6FF	1	#6 FORS CAP	CASE DRAIN AT RESEVOIR
NS	HA-L-4MF4MO	1	#4 MORB X #4 MORS 90°	PUMP LOAD SENSE
NS	HA-L-6MF6MO	1	#6 MORB X #6 MORS 90°	PUMP CASE DRAIN
<b>MANIFOLD ADAPTERS</b>				
NS	HC-143991	1	HYDRAULIC QUICK-CONNECT COUPLER AH125760	"P" PORT
NS	HA-S-6FO10MO	1	#6 FORB X #10 MORB STRAIGHT	"P" PORT
NS	HA-L-12MF10MO	1	#10 MORB X #12 MORS 90°	"P" PORT
NS	HA-S-12MF10MO	1	#10 MORB X #12 MORS STRAIGHT	"T" PORT
NS	HA-L-4MF4MO	1	#4 MORB X #4 MORS 90°	LOAD SENSE SHUTTLE
NS	HA-E-10MO	1	#10 MORB SOCKET HEAD PLUG (ZEROLEAK)	"T" PORT
NS	HA-L-4MF4MO	2	#4 MORB X #4 MORS 90°	"A" & "B" TRIM PORTS
NS	HA-L-8MF8MO	2	#8 MORB X #8 MORS 90°	"A" & "B" LEVELING PORTS
NS	HC-143991	2	HYDRAULIC QUICK-CONNECT COUPLER AH125760	TRIM MANIFOLD
NS	HA-M-12MF12FF	1	#12 ORS SWIVEL NUT RUN TEE	RETURN LINE
NS	HA-L-12MF16MO	1	#12 MORS X #16 MORB 90°	INLET PORT ON FILTER HOUSING
NS	HA-L-16MF16MO	1	#16 MORB X #16 MORS 90°	OUTLET PORT ON FILTER HOUSING
NS	HC-143991	1	HYDRAULIC QUICK-CONNECT COUPLER AH125760	"GA" PORT
NS	HC-144001	1	COVER, DUST R77175	"GA" PORT
<b>FOR COMBINES WITH SERIAL NUMBERS: 9650 STS (ALL); 9750 STS (ALL); 9660 STS ( -715400); 9760 STS ( -715500); 9860 STS ( -715600)</b>				
NS	HA-S-8MF8MO	2	#8 MORB X #8 MORS STRIAGHT	"P" AND "T" PORTS
<b>FOR COMBINES WITH SERIAL NUMBERS: 9660 STS (715401- ); 9760 STS (715501- ); 9860 STS (715601- )</b>				
NS	HA-S-4MF8MO	2	#8 MORB X #4 MORS STRAIGHT	"P" & "T" PORTS
<b>HEADER LIFT CYLINDERS</b>				
NS	HA-L-8FF8MF	1	#8 FORS X #8 MORS 90°	HEADER LIFT CYL HOSE BULKHEAD
<b>HEADER TRIM</b>				
NS	HA-Y-4MF4MF	1	#4 MORS UNION TEE	UNION OF SLAVE, MASTER AND VALVE HOSES ABOVE FAN

Model 2970 Hillco Leveling System  
For Serial Numbers 2970-1301 thru 2970-1399

**HYDRAULIC ADAPTERS (CONTINUED)**

<b>GREASE FITTINGS</b>				
NS	HA-S-2FP2MN	5	1/8" NPSM X 1/8" FPT BULKHEAD CONNECTOR	GREASE BULKHEAD MOUNT
NS	HA-NJ-2FN	5	1/8" NPSM BULKHEAD LOCKNUT	BULKHEAD CONNECTOR
NS	HC-138011	5	1/4-28 STRAIGHT ZERK	ALL GREASE LINES
NS	HA-L-2FP2MP	1	1/8 MPT 90 STREET EL	MAIN PIVOT PIN
NS	HC-135771	3	1/4-28 MALE X 1/8 FPT 90°	MASTER AND MAIN LEV CYL BASE
NS	HC-135881	1	1/4-28 MALE X 1/8 FPT STR	MASTER ROD
<b>OVER-HUNG LOAD ADAPTERS</b>				
NS	HC-143231	1	1/8" PIPE X 3" NIPPLE (304 STAINLESS)	OHLA BREATHER PORT
NS	HC-143241	1	1/8" FPIPE MERCHANT COUPLER (304 STAINLESS)	OHLA BREATHER PORT
NS	HC-145001	1	1/8" PIPE STREET ELBOW (304 STAINLESS)	OHLA BREATHER PORT
NS	HC-143251	1	METAL FILTER BREATHER, 10 MICRON	BREATHER, OIL
<b>FOR COMBINES WITH SERIAL NUMBERS: 9650 STS (ALL); 9750 STS (ALL); 9660 STS ( -715400); 9760 STS ( -715500); 9860 STS ( -715600)</b>				
NS	HA-T-16MF16MO	1	#16 ORS STRAIGHT THREAD RUN TEE	MANIFOLD RETURN AT RESERVOIR
NS	HA-S-16FF12MF	1	#16 FORS X #12 MORS STR	ON RUN SIDE OF STR THREAD RUN TEE FOR COOLER
NS	HA-L-10FF10MF	1	#10 FORS X #10 MORS 90°	RETURN OF STACK VALVE
NS	HA-M-10FF10MF	2	#10 ORS SWIVEL NUT RUN TEE	PRESSURE/RETURN OF STACK VALVE
<b>FOR COMBINES WITH SERIAL NUMBERS: 9660 STS (715401- ); 9760 STS (715501- ); 9860 STS (715601- )</b>				
NS	LA-265371	2	ADAPTER, HIC MANIFOLD, MOD	PRESSURE & RETURN OF HIC MANIFOLD
NS	HA-L-16MF16MO	1	#16 MORB X #16 MORS 90°	SUCTION PORT (RES)
NS	HA-M-16FF16MF	1	16 FORS X 16 MORS SWIVEL NUT RUN TEE	SUCTION PORT (RES)
NS	HA-S-8FF4MF	2	#8 FORS X #4 MORS REDUCER	"P"/"R" OF TRIM MANIFOLD

Model 2970 Hillco Leveling System  
For Serial Numbers 2970-1301 thru 2970-1399

**9 MISCELLANEOUS**

<b>DOCUMENTS AND LABELS</b>				
<b>REF.</b>	<b>PART NO.</b>	<b>QTY.</b>	<b>PART NAME</b>	<b>NOTES</b>
NS	LL-142091	2	DECALS, JD HILLSIDE LEV SYSTEM	
NS	LL20-100784	2	DANGER PINCH POINT	RH & LH UPPER TRANS FACE PLT
NS	LL20-100786	1	WARNING ELECTRONIC CRUSHING HAZARD	FRONT OF CONTROL BOX
NS	LL20-100786	1	WARNING ELECTRONIC CRUSHING HAZARD	EM, ASM CONTROLLER
NS	LL20-100783	6	DANGER, CRUSHING HAZARD	2-DROP AXLE END PLATES, 4-RT & LT UC FRONT AND BACK
NS	LL-143621	2	DANGER, AVIOD CRUSHING INJURY	SAFETY STOP
NS	LL-133741	2	LABEL, GREASE 50 HRS	OC BULKHEAD
NS	LL-133741	1	LABEL, GREASE 50 HRS	RH TRANS SIDE PLT (FOR SLAVE CYL)
NS	LL-133741	2	LABEL, GREASE 50 HRS	RH & LH MAIN LEV CYL BOTTOM
NS	LL-143671	1	RWA WARNING LABEL	
NS	LA-256001	1	TAG, SERIAL NUMBER	
NS	D-010823DJC01	1	MANUAL, OPERATORS	
NS	D-010725CLA01	1	MANUAL, INSTALLATION	
NS	D-060601ADL01A		MANUAL, PARTS	
NS	LA-251701	1	SAFETY LABEL PACKET	
NS	..	1	LL20-100782--CAUTION LEVELING SYSTEM CAB	WINDOW IN CAB
NS	..	1	LL20-100785--CAUTION MOVING STEP	LADDER
NS	..	1	LL20-100787--CAUTION LEVELING SYSTEM HAZARD	LADDER
NS	..	3	LL20-100788--DANGER HYDRAULIC HAZARD	1 EA MAIN CYLINDER; 1 ABOVE MANIFOLD
<b>MISCELLANEOUS COMPONENTS</b>				
<b>REF.</b>	<b>PART NO.</b>	<b>QTY.</b>	<b>PART NAME</b>	<b>NOTES</b>
NS	HC-145871	1	BEHRINGER STANDARD WELD PLATE (FOR .500)	
NS	HC-145881	1	BEHRINGER STANDARD CLAMP (.500 DIAMETER)	
NS	HC-145891	1	BEHRINGER STANDARD COVER PLATE (FOR .500)	
NS	F-HC5-04C24	2	HC5 1/4-20 X 1-1/2	BEHRINGER CLAMP FOR OHLA BREATHER HOSE
NS	HC-143601	2	CLAMP, HOSE 1-1/8" R/C 3/8" HOLE	CASE DRAIN HOSE
NS	MC-135791	1	CLAMP, HOSE 7/8" R/C 3/8" HOLE	SHIFTING CABLE & HDR LIFT CYL HOSE
NS	HC-139221	2	CLAMP, 1/4" TUBE TANDEM (PAIR)	BRAKE LINES
NS	HC-139231	4	CLAMP, COVER PLATE FOR 1/4" TUBE CLAMP	BRAKE LINES



Model 2970 Hillco Leveling System  
For Serial Numbers 2970-1301 thru 2970-1399

**10 PART NUMBER INDEX**

PART NUMBER	PAGE NUMBER	PART NUMBER	PAGE NUMBER	PART NUMBER	PAGE NUMBER	PART NUMBER	PAGE NUMBER
EC-100557	7-2	F-HCF-10M120E	8-8	F-PHM-04C24	7-2	HA-Y-4MF4MF	8-11
EC-100692	7-2	F-HCF-12M025F	3-4	F-PHM-04C36	7-2	HC-100706	2-2, 8-2
EC-138781	7-2	F-HCF-12M040E	2-6	F-PSL-04X48	3-4	HC-101021	8-4
EC-142101	7-2	F-HCF-12M080E	2-6	F-SHC-#10C32	8-6	HC-101022	8-4
EC-142121	7-2	F-HCF-16M040E	2-6	F-SHC-#10C52	8-4	HC-101264	8-4
EC-146481	7-2	F-HCF-16M080E	3-4, 8-8	F-SHC-10M070F	2-6	HC-101842	3-2, 8-2
F-CB-10M030F	2-6	F-HCF-16M090F	4-2	F-SRE-14E	8-8	HC-101843	8-2
F-CB-12M040F	2-6	F-HCF-8M020F	8-8	F-SSS-04F04	8-2	HC-102082	8-4
F-EB-04C20	2-6	F-HCF-8M050E	3-4	F-SSS-06C08	2-4	HC-103099	8-8
F-FHS-8M015E	2-6	F-HN-#10C	7-2	F-UDS-#7X06	3-4	HC-103227	3-2, 8-2
F-FWF-06020	3-4	F-HN-#2C	7-2	HA-133131	8-9	HC-133151	8-8
F-FWH-08	2-6, 6-2, 8-8	F-HN8-07C	8-2	HA-C-6FF	8-11	HC-133541	3-2
F-FWH-10	3-4, 8-8	F-HNF-#10C	7-2	HA-E-10MO	8-11	HC-134191	2-2, 8-2
F-HC-06M020F	2-6	F-HNF-#6C	7-2	HA-E-4MF	8-10	HC-134201	8-2
F-HC-08M025F	6-2	F-HNF-04C	2-6, 7-2	HA-E-6MF	8-10	HC-134251	8-2
F-HC-08M035F	6-2	F-HNF-06MF	2-6	HA-L-10FF10MF	8-12	HC-134911	8-2
F-HC-08M060F	3-4	F-HNF-08ME	3-4, 8-8	HA-L-10MO12MF	8-11	HC-135231	8-8
F-HC-08M090F	3-2	F-HNF-08MF	3-2, 3-4, 6-2	HA-L-12MF10MO	8-11	HC-135241	8-8
F-HC-08M100F	3-2	F-HNF-10ME	2-6, 8-6, 8-8	HA-L-12MF16MO	8-11	HC-135251	8-8
F-HC-10M025F	3-4	F-HNF-10MF	2-6, 3-4	HA-L-16FF16MF	8-11	HC-135771	8-12
F-HC-12M030F	6-2	F-HNF-12ME	8-8	HA-L-16MF16MO	8-11, 8-12	HC-135881	8-12
F-HC-12M040E	4-2	F-HNF-12MF	2-6	HA-L-2FP2MP	8-12	HC-137061	8-8
F-HC-12M050F	6-2	F-HNF-16ME	2-6, 3-4	HA-L-4MF4MO	8-11	HC-137891	8-2
F-HC-12M065F	6-2	F-HNF-8ME	8-4	HA-L-4MF6MO	8-11	HC-137901	8-2
F-HC-12M080E	4-2	F-HNJ-05C	6-2	HA-L-6MF6MO	8-11	HC-138011	8-12
F-HC-16M050E	2-6	F-HNJ-12MF	2-6, 8-8	HA-L-8FF8MF	8-11	HC-138861	8-4
F-HC-16M060E	5-2	F-HNN-8MF	3-2	HA-L-8MF8MO	8-11	HC-139151	3-2, 8-2
F-HC-16M110E	3-4	F-HNS-12C	3-4	HA-L-8MO8MO	8-11	HC-139161	8-2
F-HC-16M120E	2-6	F-HNS-12ME	4-2, 6-2	HA-M-10FF10MF	8-12	HC-139181	8-2
F-HC-16M190E	5-2	F-HNS-16ME	2-6, 3-4, 5-2	HA-M-12MF12FF	8-11	HC-140291	8-4
F-HC-16M250E	5-2	F-HNS-24ME	4-2	HA-M-16FF16MF	8-12	HC-140361	8-2
F-HC-24M070E	4-2	F-HNSF-12ME	2-6	HA-NJ-2FN	8-12	HC-140411	8-4
F-HC-24M110E	4-2	F-HNSF-16ME	4-2, 5-2	HA-Q-8MF8MO	8-11	HC-141531	8-8
F-HC5-04C12	7-2	F-LW-#10	8-4, 8-6	HA-S-10MF10MO	8-11	HC-142051	3-2
F-HC5-04C24	8-8	F-LW-04	7-2	HA-S-12MF10MO	8-11	HC-142061	3-2
F-HC8-07C44	8-2	F-LW-05	6-2	HA-S-12MO16MF	8-11	HC-142731	8-4
F-HC8-08F20	2-4	F-LW-08A	2-4	HA-S-16FF12MF	8-12	HC-142971	8-4
F-HC8-12C240	3-4	F-MB-14NR40	2-6	HA-S-2FP2MN	8-12	HC-143011	8-6
F-HCF-05C08	8-4, 8-6	F-MB-18NR24	4-2	HA-S-4MF8MO	8-11	HC-143231	8-12
F-HCF-06M016E	7-2	F-PCT-02X16	8-8	HA-S-6FO10MO	8-11	HC-143241	8-12
F-HCF-08M035E	8-4	F-PHM-#10C08	7-2	HA-S-8FF4MF	8-12	HC-143251	8-8, 8-12
F-HCF-10M020E	2-6, 3-4, 8-4	F-PHM-#10C16	7-2	HA-S-8FF6MF	8-11	HC-143441	8-4
F-HCF-10M020F	2-6	F-PHM-#10C28	7-2	HA-S-8MF8MO	8-11	HC-143991	8-6, 8-11
F-HCF-10M025E	2-6	F-PHM-#2C05	7-2	HA-T-16MF16MO	8-11, 8-12	HC-144001	8-11
F-HCF-10M030E	8-6, 8-8	F-PHM-#6C06	7-2	HA-T-6MF6MO	8-11	HC-145001	8-12
F-HCF-10M040F	3-4	F-PHM-#6C08	7-2	HA-T-8MO8MO	8-11	HC-145431	8-6

Model 2970 Hillco Leveling System  
For Serial Numbers 2970-1301 thru 2970-1399  
**PART NUMBER INDEX (CONTINUED)**

PART NUMBER	PAGE NUMBER	PART NUMBER	PAGE NUMBER	PART NUMBER	PAGE NUMBER	PART NUMBER	PAGE NUMBER
HC-145441	8-6	LA-234952	2-2	LM-228442	2-2	MC-100237	2-2
HC-145501	8-6	LA-234964	3-2	LM-229142	2-2	MC-100546	2-2
HC-145511	8-6	LA-234971	5-2	LM-229152	2-2	MC-100548	2-2
HC-145861	8-9	LA-235711	3-2	LM-229161	2-2	MC-101339	2-2
HC-145881	8-8	LA-235891	2-2	LM-229171	2-2	MC-103069	8-8
HC-145891	8-8	LA-236542	6-2	LM-229192	2-2	MC-103071	8-8
LA-130371	8-9	LA-236552	6-2	LM-234101	4-2	MC-103114	8-8
LA-134821	8-9	LA-236563	6-2	LM-234653	3-2	MC-134261	3-2
LA-134822	8-10	LA-238761	6-2	LM-236054	6-2	MC-134271	3-2
LA-134831	8-9	LA-243121	2-2	LM-236232	2-2	MC-134281	3-2
LA-134832	8-10	LA-249611	2-2	LM-236634	6-2	MC-134291	3-2
LA-134841	8-9	LA-255361	4-2	LM-237751	2-2	MC-134301	3-2
LA-134862	8-9, 8-10	LA-255631	7-4	LM-237761	2-2	MC-134311	3-2
LA-134872	8-9	LA-255643	7-4	LM-238341	2-2	MC-134921	6-2
LA-138962	8-9	LA-256001	3-2	LM-241271	6-2	MC-134931	6-2
LA-139113	8-9	LA-259551	8-8	LM-248781	3-2	MC-135431	4-2
LA-139141	8-9	LA-260051	2-2	LM-249861	2-2	MC-135491	2-2
LA-139522	8-9	LA-260092	7-2	LM-254781	2-2, 8-10	MC-135501	2-2
LA-139531	8-9	LA-260222	7-4	LM-255331	7-2	MC-135511	2-2
LA-139541	8-9	LA-260242	7-4	LM-255531	3-2	MC-135531	2-2
LA-140071	8-9	LA-260272	7-4	LM-260041	2-2	MC-136921	2-2, 2-4
LA-140081	8-9	LA-260401	8-8	LM-260121	3-2	MC-137521	3-2
LA-140091	8-9	LA-261141	7-4	LM-260131	3-2	MC-137531	3-2
LA-140101	8-9	LA-261151	7-4	LM-260151	3-2	MC-139241	2-2
LA-140111	8-9	LA-261161	7-4	LM-260301	7-2	MC-139341	2-2
LA-140121	8-9	LA-261171	7-4	LM-261861	3-2	MC-139351	2-2
LA-140132	8-9	LA-261191	7-2, 7-4	LM-263711	5-2	MC-139361	2-2
LA-140381	8-9	LA-263371	8-8	LM-265501X	7-2	MC-139371	2-2
LA-140391	8-9	LA-263411	8-10	LM-265511X	7-2	MC-141551	3-2
LA-143851	8-9	LA-263431	8-8	LP-103871	3-2	MC-142001	2-2
LA-145721	8-10	LA-263521	8-6	LP-228881	2-2	MC-142921	3-2
LA-145731	8-10	LA-263562	8-9	LP-230241	3-2	MC-143121	2-8
LA-145741	8-10	LA-263571	8-9	LP-232162	2-2	MC-143921	2-8
LA-145751	8-10	LA-263591	7-4	LP-234653	7-2	MC-145521	8-8
LA-145761	8-10	LA-263661	8-6	LP-235092	5-2	MC-145531	8-8
LA-145901	8-9	LA-263722	8-6	LP-249321	3-2	MC-145541	8-8
LA-228703	4-2	LA-263821	8-8	LP-249871	2-2	MC-145551	8-8
LA-228762	4-2	LA-265371	8-12	LP-255131	2-2	MC-145561	8-8
LA-228893	2-2	LA-265581	7-4	LP-260142	3-2	MC-145571	8-8
LA-229022	2-2	LA-265591	7-2	LP-263312	8-4	MC-145581	8-8
LA-229051	2-2	LA-265771	7-4	LP-263321	8-4	MC-145591	8-8
LA-229071	2-2, 3-2	LA-265781	7-2	LP-264081	8-8	MC-145601	8-8
LA-229252	3-2	LA-265791	7-4	LS-212701	2-2	MC-145781	8-8
LA-230551	3-2	LA-265831	7-2, 7-4	LS-235291	8-8	MC-145821	8-8
LA-234923	3-2	LA-265961	2-8	LS-244471	2-2, 2-4	MC-145841	8-8
LA-234931	4-2	LM-226532	2-2, 2-4	LS-263861	8-8	MC-145851	8-8
LA-234943	3-2	LM-226841	2-2	LTP-241721	2-2		