

**Model 2970
Hillside Leveling System
Parts Manual**

SN 2970-0022 thru 2970-0028

D-060510ADL01A





2970 Hillside Leveling System
for 9650 STS, 9660 STS, 9760 STS, 9860 STS
AND 9750 STS John Deere Combines

TABLE OF CONTENTS

1 GENERAL INFORMATION	1-3
Serial Number Location.....	1-3
Text Format and Illustrations.....	1-3
Abbreviations.....	1-3
Right and Left Identification.....	1-3
Parts Orders	1-3
2 TRANSITION	2-1
Transition Fasteners.....	2-3
Radial Pin Slip Clutch.....	2-5
3 CARRIAGE	3-1
Carriage Fasteners.....	3-3
4 Y-BRACE	4-1
5 DROP AXLE	5-1
6 LADDER	6-1
7 ELECTRICAL COMPONENTS	7-1
Electrical Cables & Connectors.....	7-3
8 HYDRAULICS	8-1
Hydraulic Manifold.....	8-3
Hydraulic Pump	8-5
Header Tilt Valve.....	8-7
Hydraulic Hoses	8-9
Hydraulic Adapters	8-10
9 MISCELLANEOUS	9-1
10 PART NUMBER INDEX	10-1
Part Number Index (Continued)	10-2

Model 2970 Hillco Leveling System
For Serial Numbers 2970-0022 thru 2970-0028

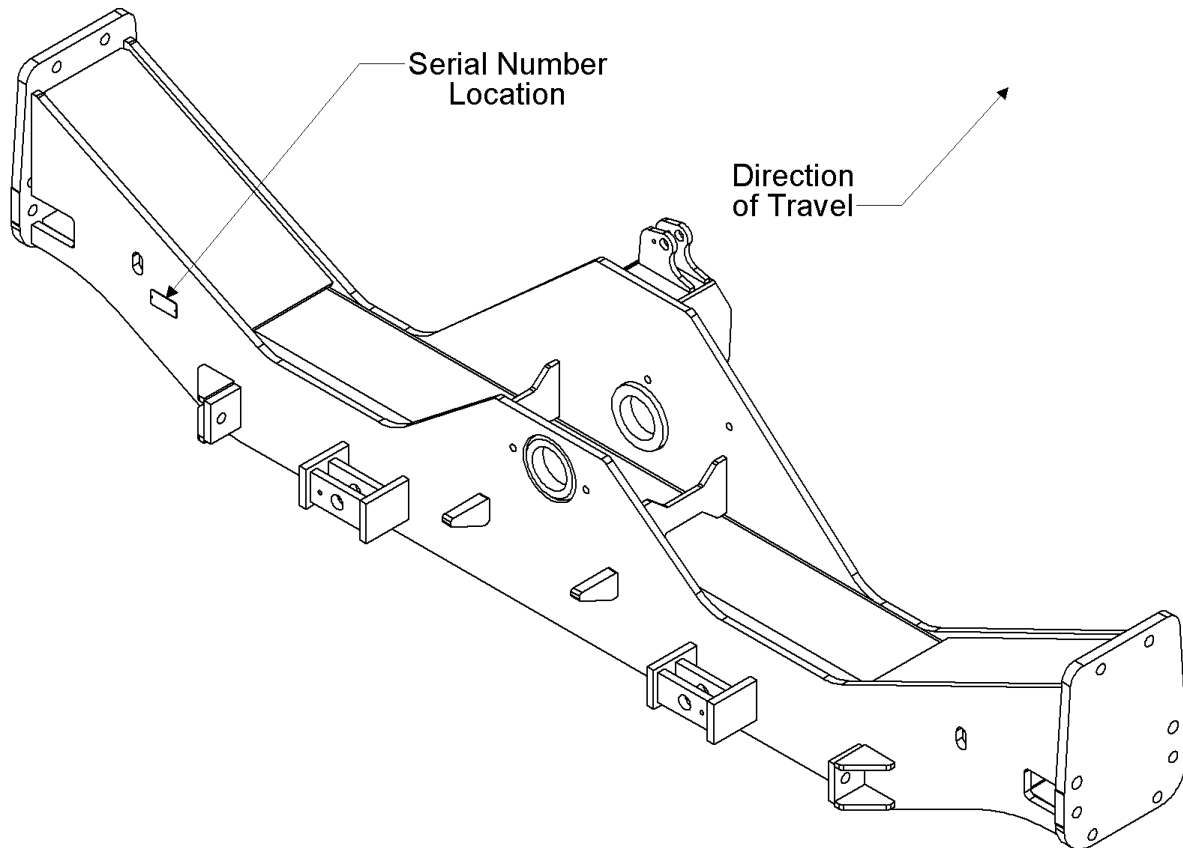
Hillco Technologies, Inc.
107 1st Avenue
Nezperce Id. 83543

Fax	208.937.2280
Phone	208.937.2461
Toll Free	800.937.2461

www.hillcotechnologies.com

1 GENERAL INFORMATION

SERIAL NUMBER LOCATION



TEXT FORMAT AND ILLUSTRATIONS

The arrangement of this parts catalog is for easy identification of parts. All parts are illustrated in exploded views in proper relation to each other. Some diagrams refer to other pages for further information. Reference numbers used in the illustrations refer to line numbers in the part lists. The part lists appear to the right of all diagrams and correspond with those diagrams. Included in the part lists, along with the reference numbers are part numbers, part descriptions and the quantity of the part required per leveling system.

ABBREVIATIONS

SN "Serial Number" refers to the serial number given to each leveling system (by Hillco Technologies), as well as the serial number given to the combine (by the specific combine manufacturer) the leveling system is installed upon. This abbreviation is used interchangeably in both instances. Each model 2970 Leveling System uses the following serial number format: 2970-XXXX (sequential numbers).

ASM "Assembly" refers to a whole grouping of parts (usually shown in the diagram corresponding with the page where "ASM" is shown unless otherwise noted). Some assemblies have parts that are sold separately, however some must be purchased as a single unit. Hillco Product Specialists will be able to assist you with any questions.

NS "Not Shown" refers to a part that is not depicted in the illustration.

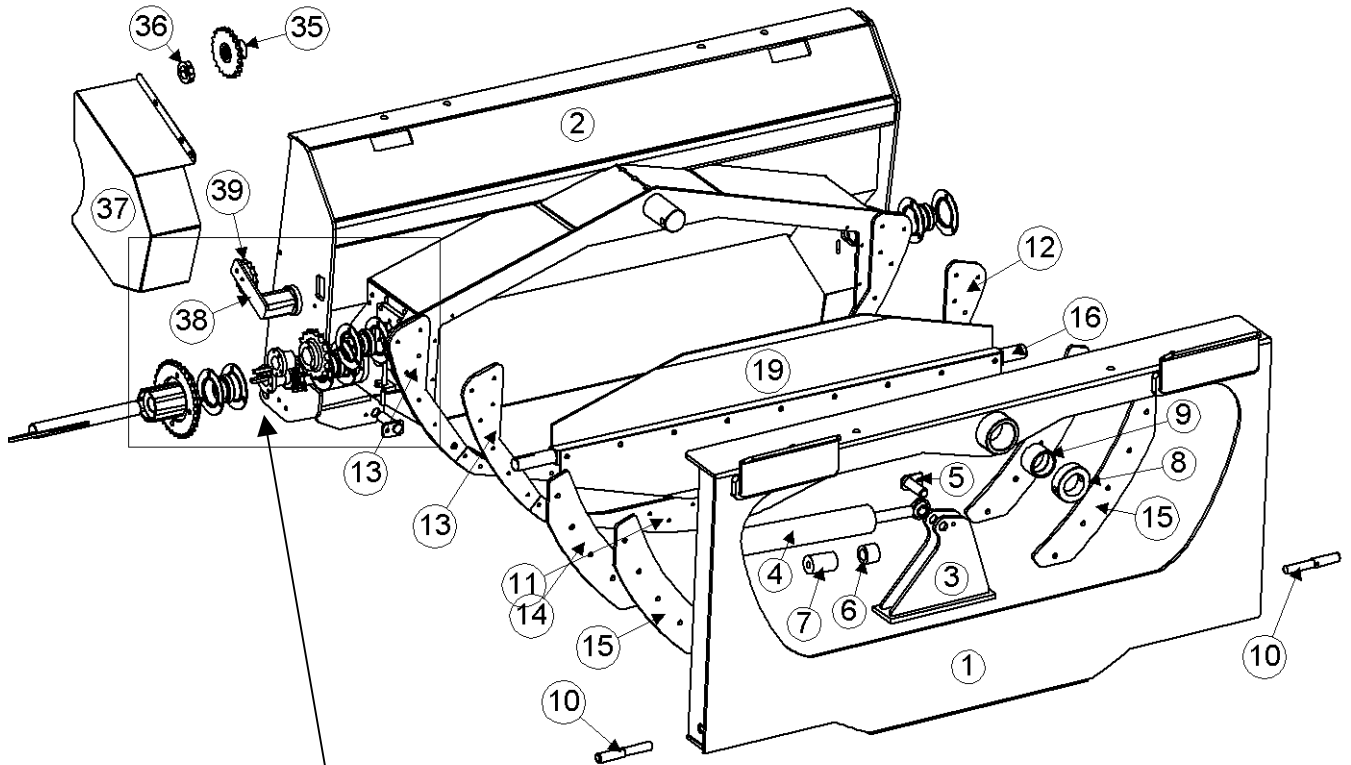
RIGHT AND LEFT IDENTIFICATION

The reference to right-hand and left-hand in this catalog is identified by the operator sitting in the operator's seat, looking toward the front of the machine (in normal forward travel).

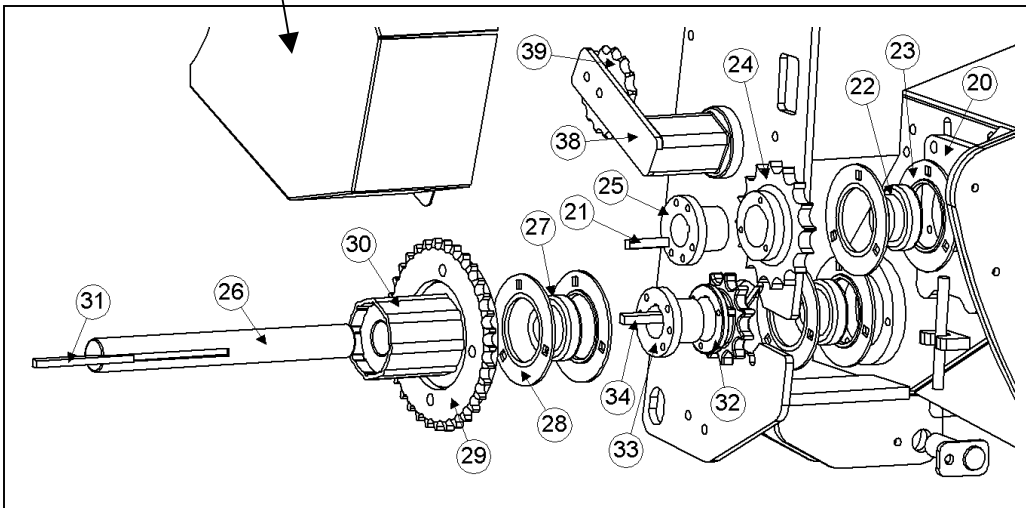
PARTS ORDERS

Orders must specify product model, serial number, correct part number, complete description, quantity required, method of shipment, shipping address, and billing address.

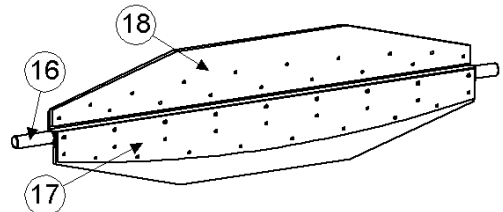
2 TRANSITION



TRANSITION DRIVE COMPONENT DETAIL



Midwest Option View:
Rubber Paddles with Backing Plates



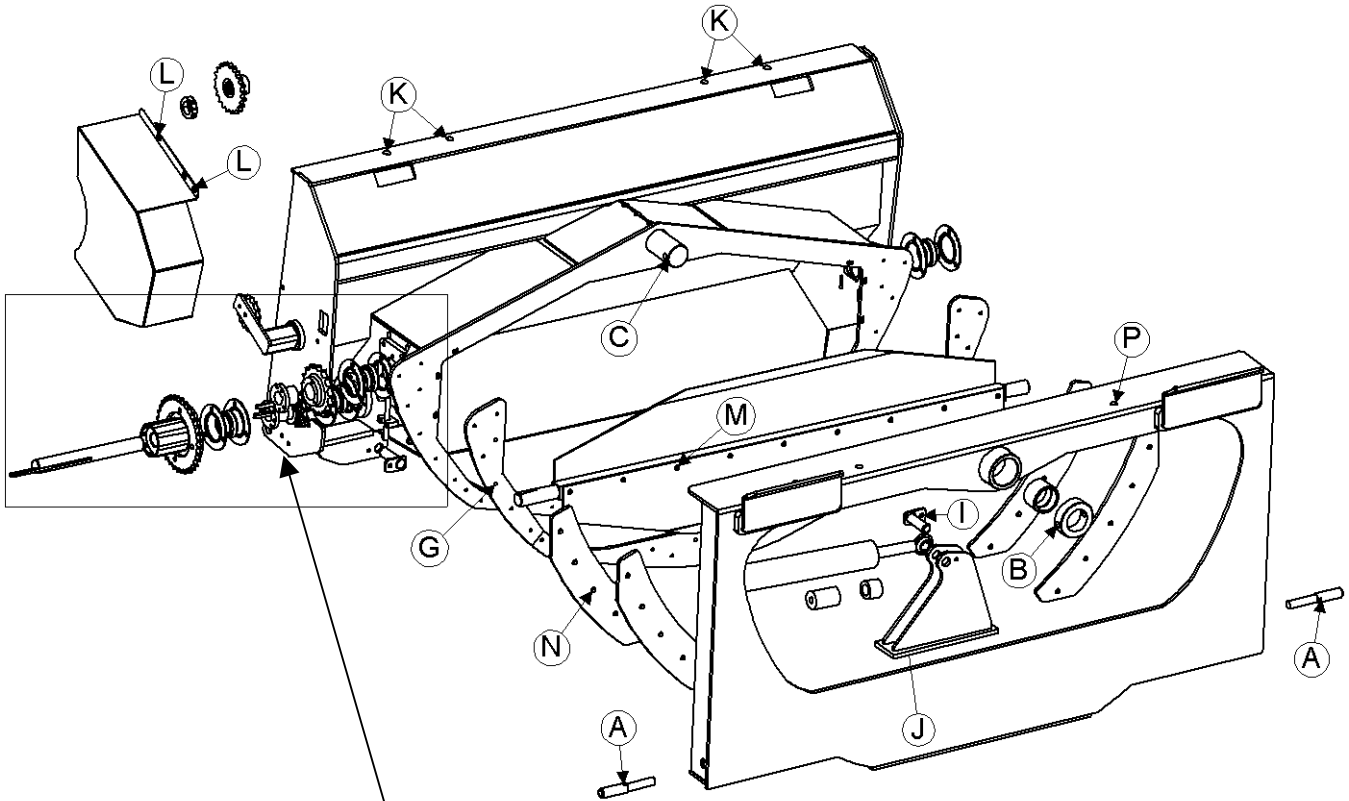
SEE PAGE 2-3 FOR
TRANSITION FASTENERS

Model 2970 Hillco Leveling System
For Serial Numbers 2970-0022 thru 2970-0028

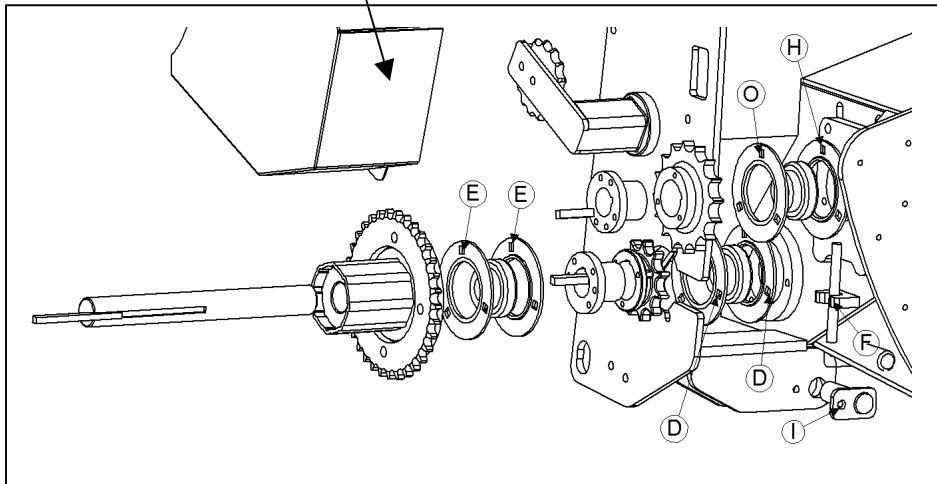
TRANSITION COMPONENTS				
REF.	PART NO.	QTY.	PART NAME	DESCRIPTION
1	LA-228893	1	TA ADAPTER ASM	
2	LA-234952	1	TT THROAT ASM	
3	LA-229022	1	TM MOUNT ASM, ROD	
4	HC-100706	1	CYLINDER, SLAVE, 2-1/2 X 12-1/2	
NS	HC-134191	1	SEAL KIT, SLAVE CYLINDER	
5	LA-229071	4	TM PIN ASM, TRIM CYLINDER	
6	LM-237751	1	LM STOP, SLAVE CYL ROD	MIDWEST COMBINES WITH 6-ROW CORN HEAD
7	LM-237761	1	LM STOP, SLAVE CYL BASE	MIDWEST COMBINES WITH 6-ROW CORN HEAD
8	LM-226841	1	TM COLLAR, PIVOT	
9	LTP-241721	1	BUSHING, GRAPHITE	
10	LM-229192	2	TM ROD, LOCK	
NS	MC-135531	2	SPRING, COMPRESSION	
11	LM-229152	1	TM PLATE, WEAR BOTTOM	
12	LM-229161	1	TM PLATE, WEAR LH	
13	LM-229171	1	TM PLATE, WEAR RH	
14	LM-249861	2	TM PLT, BACKING	
15	LP-249871	2	TM UHMW, BACKING	
BEATER SHAFT				
16	LA-249611	1	TB ASM, SHAFT	
17	LM-228442	2	TB PLATE, PADDLE BACKING	MIDWEST COMBINES ONLY
18	LP-228881	2	TB PADDLE, RUBBER	MIDWEST COMBINES ONLY
19	LM-238341	2	TB PADDLE, METAL	NORTHWEST COMBINES ONLY
20	LA-229051	2	TM MOUNT ASM, BEATER	
21	LS-212701	1	TM KEY, BEATER DRIVE, 3/8 X 2	
22	MC-100548	2	BEARING INSERT, 1-7/16, NON-RELUBE	
23	MC-101339	2	FLANGETTES, RND BEARING	
24	MC-135501	1	SPROCKET, 16T 80P TAPER BORE HRD	
25	MC-135511	1	HUB, SPLIT TAPER 1-7/16	
NS	LP-232162	1	TM CHAIN, 28 PIN 80P	
NS	MC-139341	1	LINK, CONNECTING, 80P	
NS	MC-139351	1	LINK, OFFSET, 80P	
TRANSITION THROAT JACK SHAFT				
26	LM-229142	1	TM SHAFT, JACK	
27	MC-100548	2	BEARING INSERT, 1-7/16, NON-RELUBE	
28	MC-101339	2	FLANGETTES, RND BEARING	
29	LM-226532	1	TM SPROCKET, RADIAL SLIP CLUTCH	
30	MC-136921	1	RADIAL PIN SLIP CLUTCH	
31	LS-244471	1	TM KEY, RADIAL PIN SLIP CLUTCH	
32	MC-135491	1	SPROCKET, 11T 80P TAPER BORE HRD	
33	MC-135511	1	HUB, SPLIT TAPER 1-7/16	
34	LS-212701	1	TM, KEY BEATER DRIVE	
NS	LP-213252	1	TM CHAIN, 62 PIN 60P	
NS	MC-139361	1	LINK, CONNECTING, 60P	
NS	MC-139371	1	LINK, OFFSET, 60P	
FEEDER HOUSE BEATER DRIVE				
35	LA-235891	1	TM DRIVE ASM TRAN, 21T 21SP/60P	
36	MC-142001	2	1PC COLLAR, SPLIT, 1-3/8 BORE	
37	LM-236232	1	TM SHIELD, DRIVE	
TENSIONER				
38	MC-100546	1	TENSIONER	
39	MC-100237	1	SPROCKET, IDLER, 15T 60P 5/8B	
NS	MC-139241	1	TENSIONER HARDWARE KIT	

Model 2970 Hillco Leveling System
 For Serial Numbers 2970-0022 thru 2970-0028

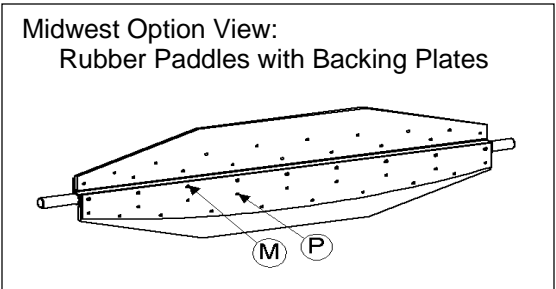
TRANSITION FASTENERS



TRANSITION FASTENERS DRIVE COMPONENT DETAIL



*Note: The fasteners with reference number "J" attach to the base of the Rod Mount Assembly (LA-229022), however they cannot be shown in this view. The leader is pointing to the general area, but they are behind the Throat Adapter.

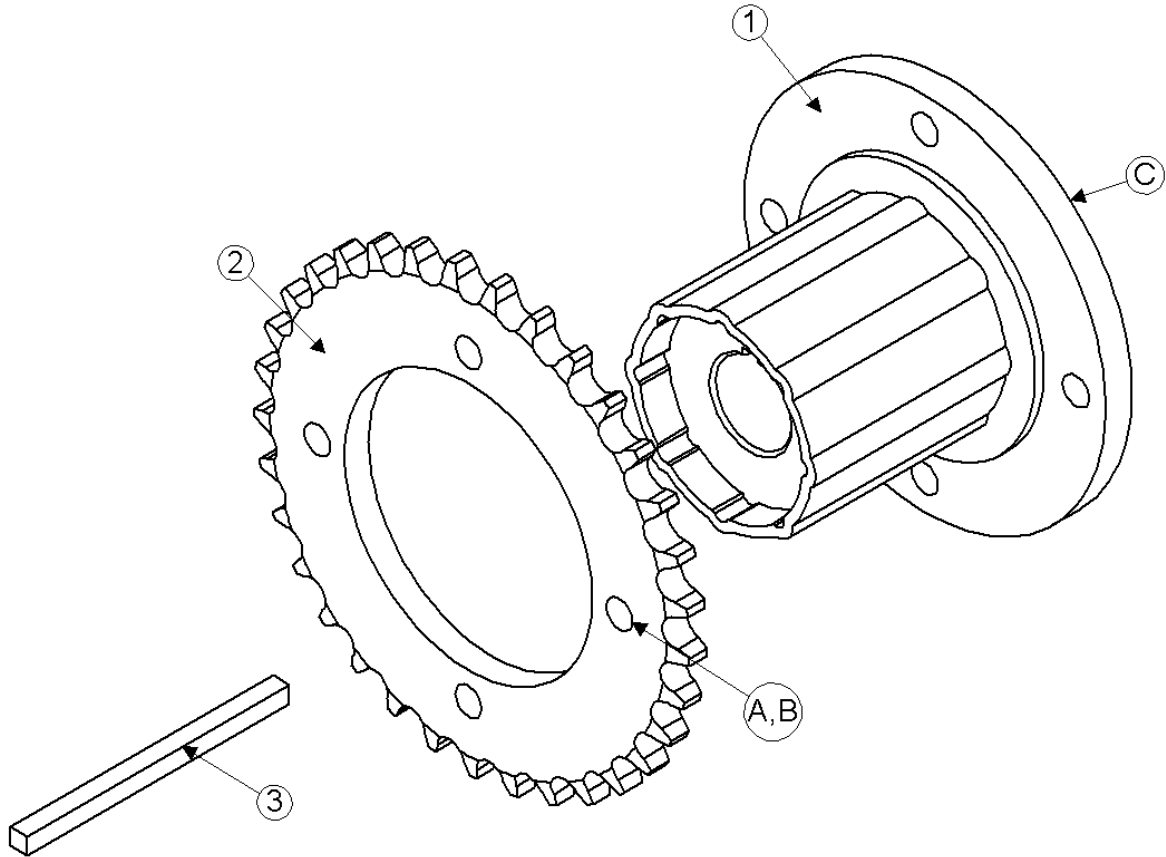


Model 2970 Hillco Leveling System
For Serial Numbers 2970-0022 thru 2970-0028

TRANSITION FASTENERS				
REF.	PART NO.	QTY.	PART NAME	WHERE USED
A	F-SHC-10M070F	2	SHCS-8.8 M10 X 1.50 X 70	THA HEADER LOCK
B	F-HC-16M120E	1	HC-10.9 M16 X 2.00 X 120	MAIN PIVOT PIN COLLAR
B	F-HNS-16ME	1	HN-10.9 M16 X 2.00 STOVER	MAIN PIVOT PIN COLLAR
C	F-MB-14NR40	3	MACH BUSH 14 GA NR 2-1/2" ID	MAIN PIVOT PIN
D	F-HCF-10M020E	3	FLHC- 10.9 M10 X 1.50 X 20	INNER 3-BOLT JS BEARING
E	F-CB-10M030F	3	CARR-8.8 M10 X 1.50 X 30	OUTER 3-BOLT JS BEARING
E	F-HNF-10MF	3	FLHN-8.8 M10 X 1.50	OUTER 3-BOLT JS BEARING
F	F-FWH-08	4	FW 1/2 HD YELLOW	BEATER BRNG TAKE-UP BLT
F	F-HNJ-12MF	4	HN-8.8 M12 X 1.75 JAM	BEATER BRNG TAKE-UP BLT
G	F-FHS-8M015E	29	FHSC-10.9 M8 X 1.25 X 15	TT FACE PLATE
H	F-CB-12M040F	8	CARR-8.8 M12 X 1.75 X 40	TT BEATER BRNG MNT PLT
H	F-HNF-12MF	9	FLHN-8.8 M12 X 1.75	TT BEATER BRNG MNT PLT
I	F-HCF-10M020F	2	FLHC-8.8 M10 X 1.50 X 20	SLAVE CYL MNT PIN
J	F-HC-16M050E	3	HC-10.9 M16 X 2.00 X 50	ROD MNT
J	F-HNS-16ME	3	HN-10.9 M16 X 2.00 STOVER	ROD MNT
K	F-HCF-12M040E	4	FLHC-10.9 M12 X 1.75 X 40	TRANSITION MNT - FOR SN [9750 (-688210); 9650 (-686329)]
K	F-HCF-16M040E	4	FLHC-10.9 M16 X 2.00 X 40	TRANSITION MNT ALL 60 SERIES COMBINES [9750 (688211-); 9750 (688330-)]
L	F-HNF-10MF	2	FLHN-8.8 M10 X 1.50	TM DRIVE SHIELD
L	F-HCF-10M020F	2	FLHC-8.8 M10 X 1.50 X 20	TM DRIVE SHIELD
M	F-HNSF-12ME	9	FLHN- 1039 M 12 X 1.75 STOVER	STEEL BEATER PADDLES OR PADDLE BACKING PLATES
M	F-HCF-12M080E	9	FLHC-10.9 M12 X 1.75 X 80	STEEL BEATER PADDLES OR PADDLE BACKING PLATES
N	F-HCF-12M040E	10	FLHC-10.9 M12 X 1.75 X 40	BACKING PLATES
O	F-HCF-10M020F	6	FLHC-8.8 M10 X 1.50 X 20	TT BEATER BRNG MNT PLT
FOR MIDWEST COMBINES				
P	F-EB-04C20	34	BOLT, ELEVATOR, 1/4-20 x 1-1/4 ZINC	PB PADDLES
P	F-HNF-04C	34	SERR. FLHN 1/4-20 ZINC	PB PADDLES

Model 2970 Hillco Leveling System
For Serial Numbers 2970-0022 thru 2970-0028

RADIAL PIN SLIP CLUTCH

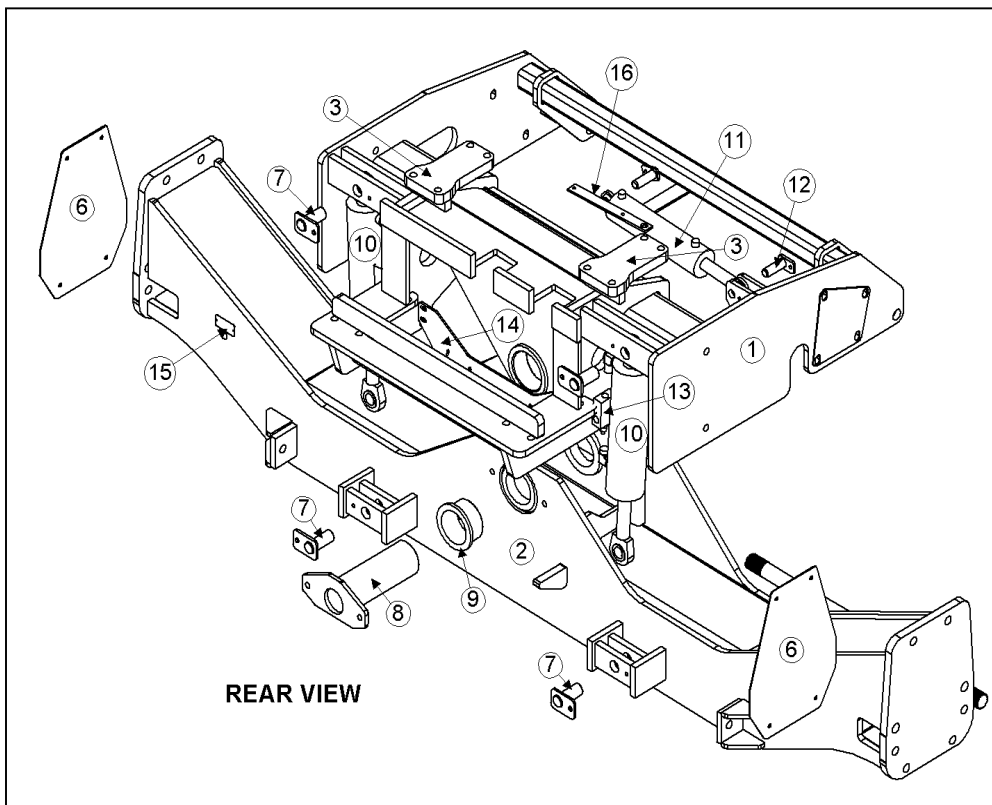
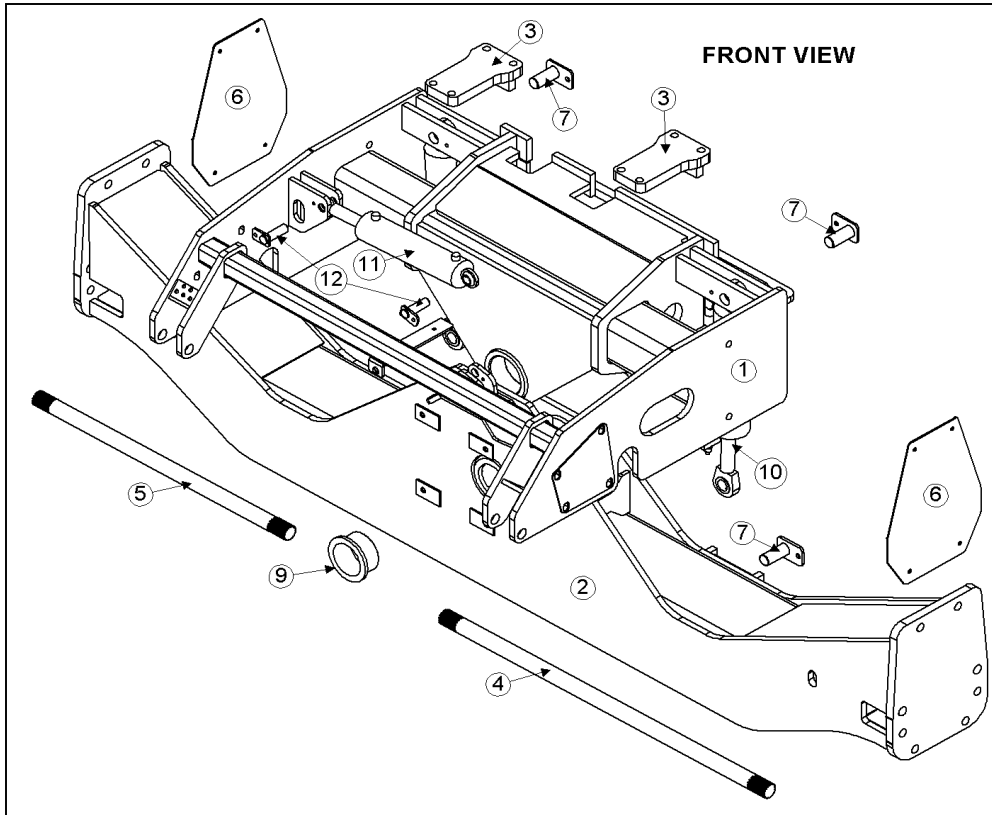


Model 2970 Hillco Leveling System
For Serial Numbers 2970-0022 thru 2970-0028

RADIAL PIN SLIP CLUTCH COMPONENTS				
REF.	PART NO.	QTY.	PART NAME	DESCRIPTION
1	MC-136921	1	RADIAL PIN SLIP CLUTCH	
2	LM-226532	1	TM SPROCKET, RADIAL SLIP CLUTCH	
3	LS-244471	2	TM KEY, RADIAL PIN SLIP CLUTCH	
RADIAL PIN SLIP CLUTCH FASTENERS				
A	F-HC8-08F20	4	HC8 1/2-20 X 1-1/4	
B	F-LW-08A	4	LW 1/2 HD	
C	F-SSS-06C08	2	SCREW, SOCKET SET 3/8-16 X 2	

3 CARRIAGE

SEE PAGE 3-3 FOR
CARRIAGE FASTENERS

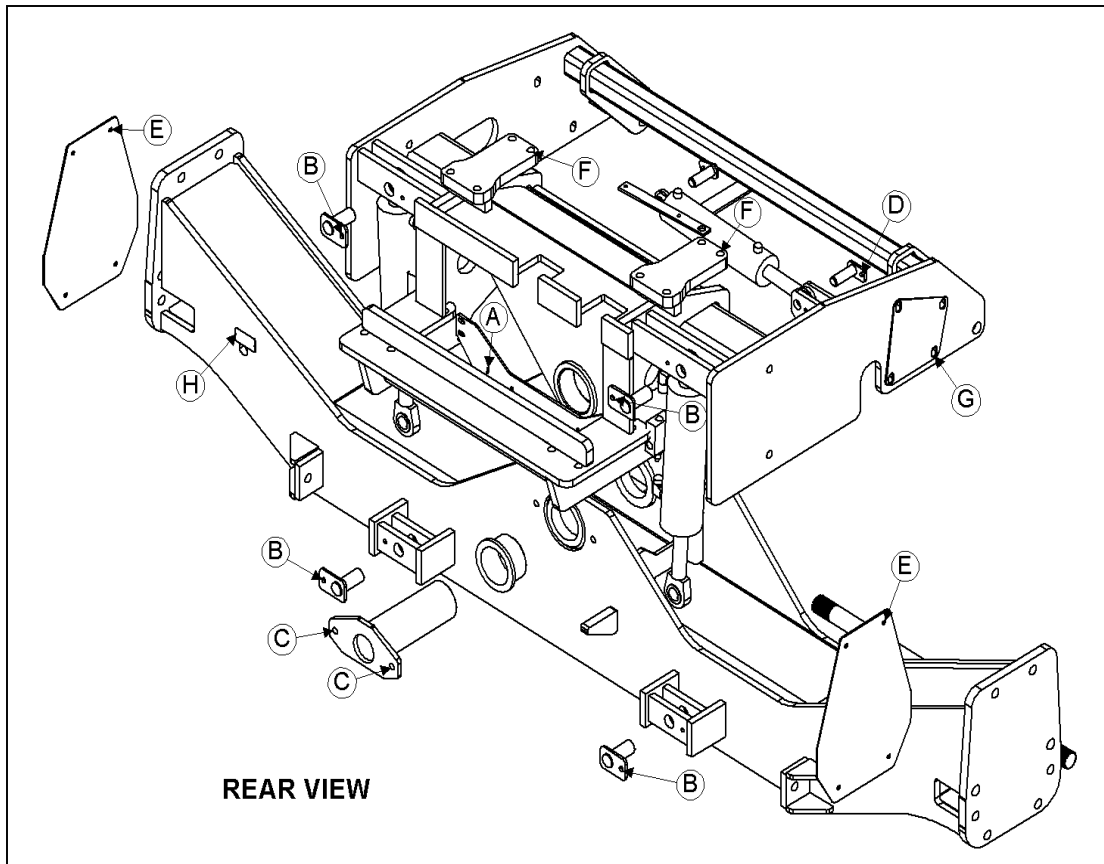
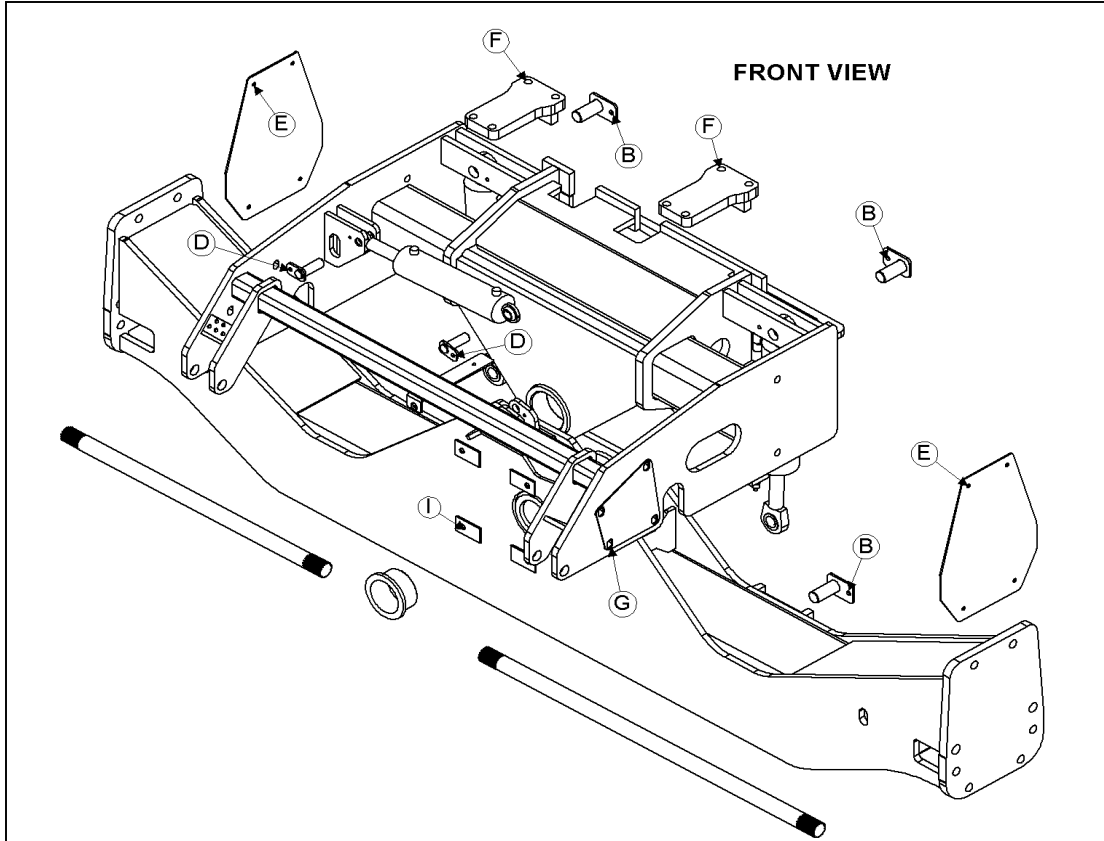


Model 2970 Hillco Leveling System
For Serial Numbers 2970-0022 thru 2970-0028

CARRIAGE				
REF.	PART NO.	QTY.	PART NAME	DESCRIPTION
1	LA-234922	1	CO ASM, 2970	
2	LA-234963	1	CU ASM, 122.5	
NS	LA-234943	1	CU ASM, 114.5	<i>OPTIONAL -- FOR MIDWEST COMBINES</i>
3	LA-235711	2	CM PLATE ASM, TOP	
4	MC-134261	1	COUNTER SHAFT, 1228 MM, LEFT	122.5" UNDERCARRIAGE, NO EXTENSIONS
4	MC-134281	1	COUNTER SHAFT, 1126.5 MM, LEFT	114.5" UNDERCARRIAGE, NO EXTENSIONS
4	MC-134301	1	COUNTER SHAFT, 1175.5 MM, LEFT	114.5 UNDERCARRIAGE, WITH 1.9375" EXTENSION
5	MC-134271	1	COUNTER SHAFT, 951 MM, RIGHT	122.5" UNDERCARRIAGE, NO EXTENSIONS
5	MC-134291	1	COUNTER SHAFT, 849.5 MM, RIGHT	114.5" UNDERCARRIAGE, NO EXTENSIONS
5	MC-134311	1	COUNTER SHAFT, 898.5 MM, RIGHT	114.5 UNDERCARRIAGE, WITH 1.9375" EXTENSION
6	LP-230241	2	CM CAP, AXLE	
7	LA-230551	4	CM PIN ASM, MAIN CYLINDER	
8	LA-229251	1	CM PIN ASM, MAIN PIVOT	
9	LP-103871	2	CO BUSHING, PIVOT	
10	HC-103227	2	CYLINDER, MAIN LEVELING	<i>SEE HYDRAULIC PAGE 8-1</i>
11	HC-101842	1	CYLINDER, MASTER	<i>SEE HYDRAULIC PAGE 8-1</i>
12	LA-229071	2	TM PIN ASM, TRIM CYLINDER	
13	HC-139151	2	VALVE, COUNTER BALANCE	<i>SEE HYDRAULIC PAGE 8-1</i>
14	LP-234652	1	EM MOUNT, CONTROL BOX	
15	LL20-100790	1	PLATE, SERIAL NUMBER	
16	LM-248781	1	LM FLAT, BRAKELINE BRACKET	
MISCELLANEOUS CARRIAGE COMPONENTS				
NS	MC-137521	2	HOSE CLAMP, TANDEM	
NS	MC-137531	2	HOSE CLAMP, TANDEM COVER PLT	
NS	MC-142921	2	EMERGENCY BRAKE CABLE	
NS	LA-243131	1	2970 HDR LIFT CYLINDER DROP KIT	<i>OPTIONAL -- FOR 12-ROW CORN HEADS</i>

Model 2970 Hillco Leveling System
For Serial Numbers 2970-0022 thru 2970-0028

CARRIAGE FASTENERS

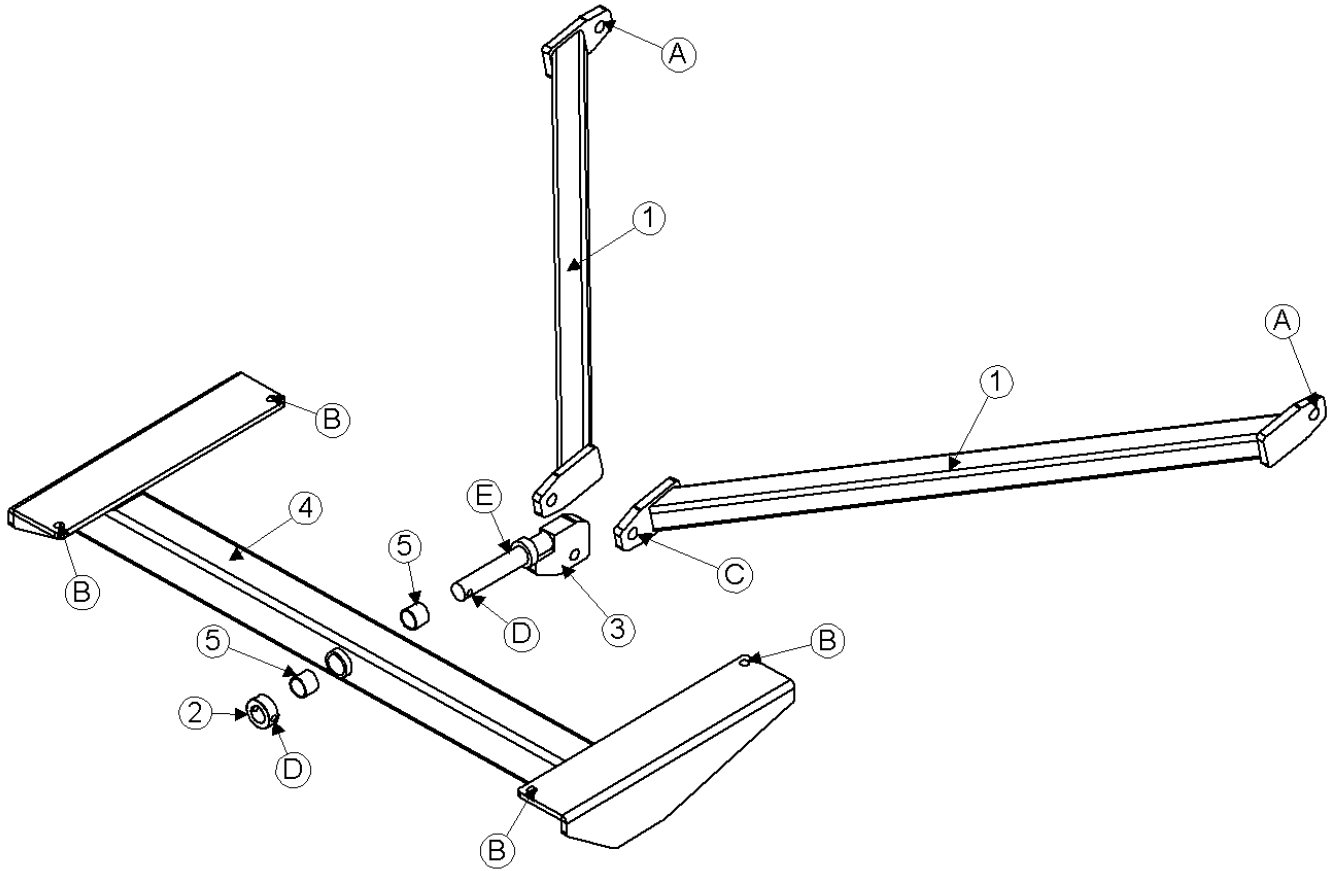


Model 2970 Hillco Leveling System
For Serial Numbers 2970-0022 thru 2970-0028

CARRIAGE FASTENERS				
REF.	PART NO.	QTY.	PART NAME	WHERE USED
A	F-HNF-10MF	4	FLHN-8.8 M10 X 1.50	EM MOUNT, CONTROL BOX
A	F-HC-10M025F	4	HC-8.8 M10 X 1.50 X 25	EM MOUNT, CONTROL BOX
B	F-HCF-12M025F	4	FLHC-8.8 M12 X 1.75 X 25	LEVELING CYL MNT PIN
C	F-HC-16M060E	2	HC-10.9 M16 X 2.00 X 60	MAIN PVT PIN
C	F-HNS-16ME	2	HN-10.9 M16 X 2.00 STOVER	MAIN PVT PIN
D	F-HCF-10M020E	2	FLHC-10.9 M10 X 1.50 X 20	MASTER CYL MNT PIN
E	F-HC-10M040F	8	HC-8.8 M10 X 1.50 X 40	ORIGINAL AXLE COVER
E	F-HNF-10MF	8	FLHN-8.8 M10 X 1.50	ORIGINAL AXLE COVER
E	F-FWF-06020	8	3/8 FW FENDER X 1-1/4	ORIGINAL AXLE COVER
F	F-HC8-12C240	8	HC8 3/4-10 X 15	OVERCARRIAGE CLAMP
F	F-HNS-12C	8	HN8 3/4-10 STOVER	OVERCARRIAGE CLAMP
G	F-HC-16M110E	8	HC-10.9 M16 X 2.00 X 110	OVERCARRIAGE FRONT MOUNT
G	F-FWHD-10	8	FW 5/8 HD	OVERCARRIAGE FRONT MOUNT
H	F-UDS-#7X06	2	#7 X 3/8 U-DRIVE SCREW	SERIAL NUMBER PLATE
I	F-HCF-16M080E	4	FLHC-10.9 M16 X 2.00 X 80	TRANSMISSION

Model 2970 Hillco Leveling System
For Serial Numbers 2970-0022 thru 2970-0028

4 Y-BRACE

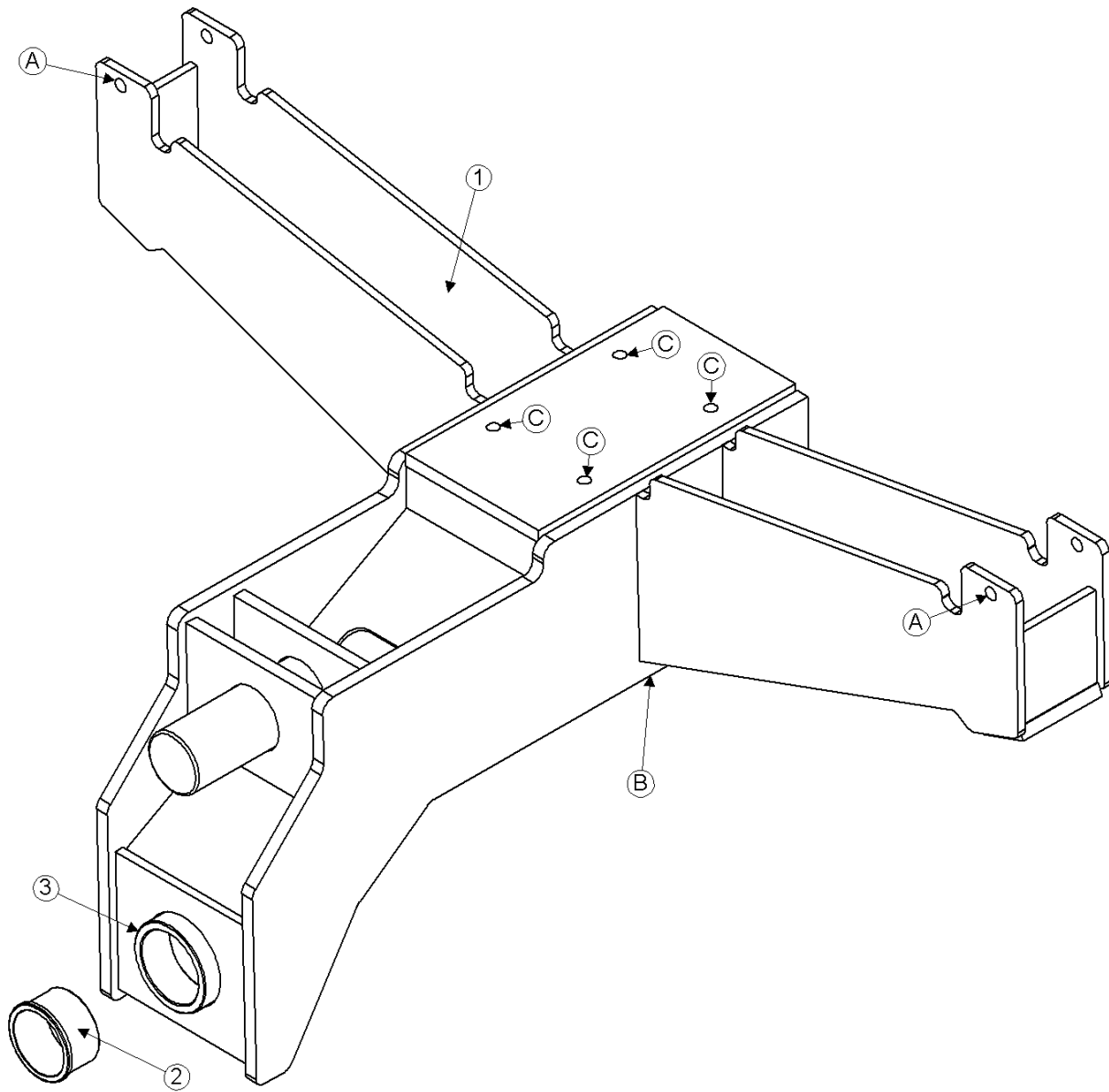


Model 2970 Hillco Leveling System
For Serial Numbers 2970-0022 thru 2970-0028

Y-BRACE COMPONENTS				
REF.	PART NO.	QTY.	PART NAME	DESCRIPTION
1	LA-228702	2	YB ARM ASM	
2	LM-234101	1	YB COLLAR, PIVOT PIN	
3	LA-228762	1	YB PIN ASM, PIVOT	
4	LA-234931	1	YB SUPPORT ASM, CROSS	<i>FOR 50 SERIES COMBINES</i>
5	MC-135431	2	BUSHING, PLANE	
Y-BRACE FASTENERS				
REF.	PART NO.	QTY.	PART NAME	WHERE USED
A	F-HC-24M070E	2	HC-10.9 M24 X 3.00 X 70	Y-BRACE FRNT MNT
A	F-HNS-24ME	2	HN-10.9 M24 X 3.00 STOVER	Y-BRACE FRNT MNT
B	F-HC-12M040E	6	HC-10.9 M12 X 1.75 X 40	Y-BRACE CROSS SUPPORT FOR <i>50 SERIES COMBINES</i>
B	F-HNS-12ME	6	HN-10.9 M12 X 1.75 STOVER	Y-BRACE CROSS SUPPORT FOR <i>50 SERIES COMBINES</i>
C	F-HC-24M110E	1	HC-10.9 M24 X 3.00 X 110	Y-BRACE REAR MNT
C	F-HNS-24ME	1	HN-10.9 M24 X 3.00 STOVER	Y-BRACE REAR MNT
D	F-HC-12M080E	1	HC-10.9 M12 X 1.75 X 80	Y-BRACE PVT PIN COLLAR
D	F-HNS-12ME	1	HN-10.9 M12 X 1.75 STOVER	Y-BRACE PVT PIN COLLAR
E	F-MB-18NR24	20	MACH BUSH 18GA NR 1-1/2 "ID	Y-BRACE PVT PIN

Model 2970 Hillco Leveling System
For Serial Numbers 2970-0022 thru 2970-0028

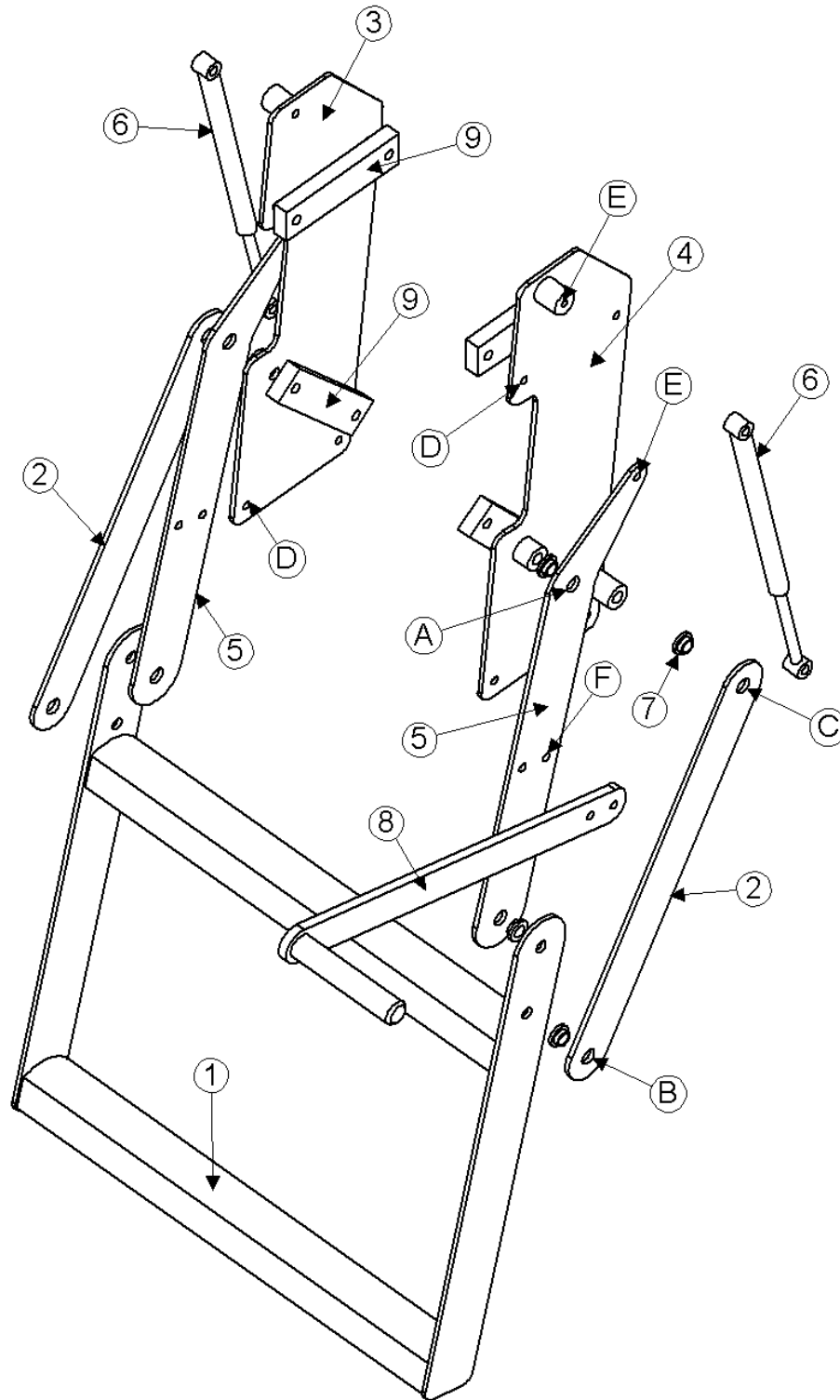
5 DROP AXLE



Model 2970 Hillco Leveling System
For Serial Numbers 2970-0022 thru 2970-0028

DROP AXLE COMPONENTS				
REF.	PART NO.	QTY.	PART NAME	DESCRIPTION
1	LA-234971	1	DA ASM	
2	LM-235091	1	LM BUSHING, DA PIVOT	
3	HC-133891	1	1/8 MPT SRAIGHT	DROP AXLE
DROP AXLE FASTENERS				
REF.	PART NO.	QTY.	PART NAME	WHERE USED
A	F-HNS-16ME	2	HN-10.9 M16 X 2.00 STOVER	DROP AXLE WING
A	F-HC-16M190E	2	HC-10.9 M16 X 2.00 X 190	DROP AXLE WING
B	F-HC-16M250E	4	HC-10.9 M16 X 2.00 X 250	DROP AXLE LOWER PLATE
B	F-HNS-16ME	4	HN-10.9 M16 X 2.00 STOVER	DROP AXLE LOWER PLATE
C	F-HC-16M050E	4	HC-10.9 M16 X 2.00 X 50	DROP AXLE UPPER PLATE
C	F-HNS-16ME	4	HN-10.9 M16 X 2.00 STOVER	DROP AXLE UPPER PLATE

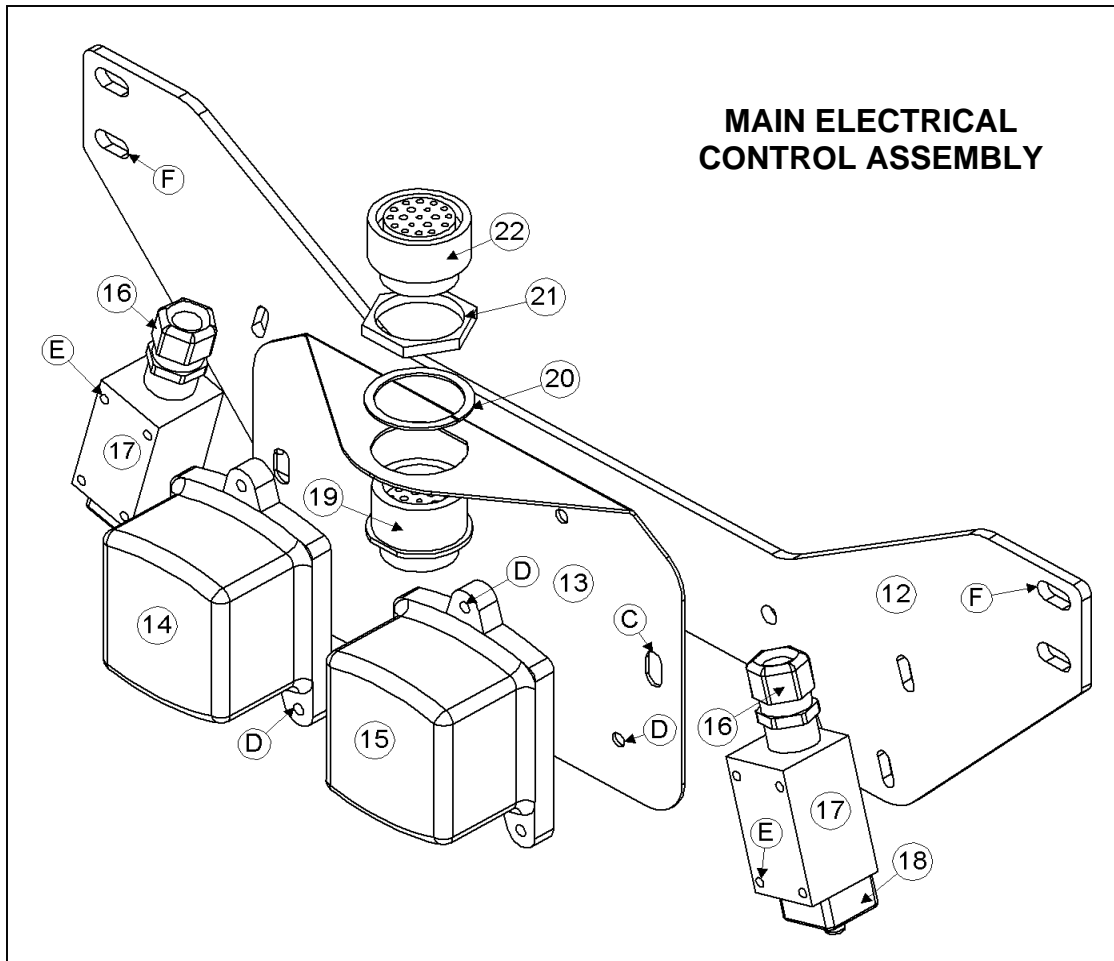
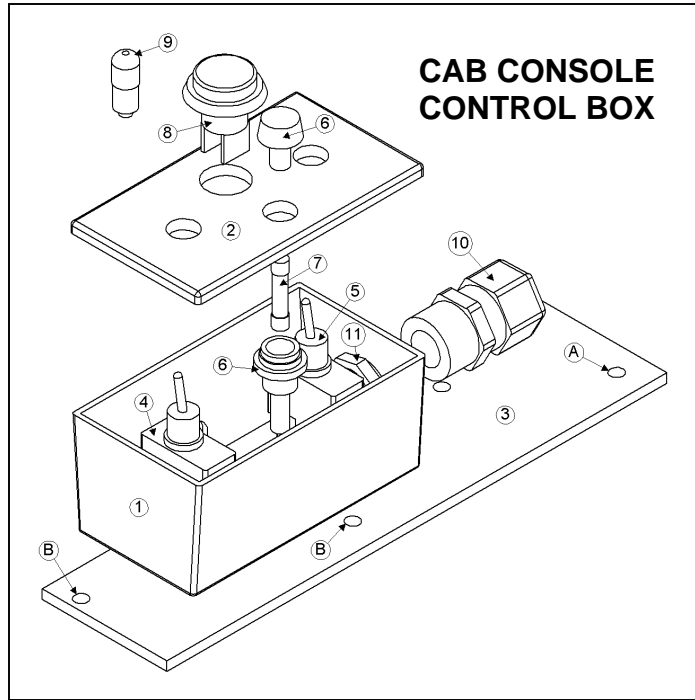
6 LADDER



Model 2970 Hillco Leveling System
For Serial Numbers 2970-0022 thru 2970-0028

LADDER COMPONENTS				
REF.	PART NO.	QTY.	PART NAME	DESCRIPTION
1	LA-236563	1	LM STEP ASM, FOLDING LADDER LOWER	
2	LM-236053	2	LM PLT, FOLDING LADDER LINK	
3	LA-236542	1	LM PLT ASM, LFT SIDE FOLDING LADDER	
4	LA-236552	1	LM PLT ASM, RHT SIDE FOLDING LADDER	
5	LM-236632	2	LM PLT, UPPER ARM	
6	MC-134921	2	GAS CHARGED LIFT SUPPORT	
NS	MC-134931	2	LIFT SUPPORT BRACKETS (PAIR)	
7	MC-134941	8	FLANGED BUSHING, OILITE	
8	LA-238761	1	LM ASM, LADDER HANDLE	
9	LM-241271	4	LM FLT, LADDER SPACER	
LADDER FASTENERS				
REF.	PART NO.	QTY.	PART NAME	WHERE USED
A	F-HC-12M050F	2	HC-8.8 M12 X 1.75 X 50	TOP SIDE PLATE PIVOT
A	F-HNS-12ME	2	HN-10.9 M12 X 1.75 STOVER	PIVOTS
B	F-HC-12M030F	4	HC-8.8 M12 X 1.75 X 30	MIDDLE PIVOTS
B	F-HNS-12ME	4	HN-10.9 M12 X 1.75 STOVER	PIVOTS
C	F-HC-12M060F	2	HC-8.8 M12 X 1.75 X 60	BOTTOM SIDE PLT PIVOTS
C	F-HNS-12ME	2	HN-10.9 M12 X 1.75 STOVER	PIVOTS
D	F-HC-08M035F	8	HC-8.8 M8 X 1.25 X 35	SIDE PLATE MOUNTS
D	F-HNF-08MF	8	FLHN 8.8 M8 X 1.25	SIDE PLATE MOUNTS
E	F-HNJ-05C	2	HN5 5/16-18 JAM NUT	BALL STUD
E	F-LW-05	4	LW 5/16	BALL STUD
F	F-HC-08M025F	2	HC-8.8 M8 X 1.25 X 25	HANDLE
F	F-HNF-08MF	2	FLHN 8.8 M8 X 1.25	HANDLE

7 ELECTRICAL COMPONENTS



Model 2970 Hillco Leveling System
For Serial Numbers 2970-0022 thru 2970-0028

CAB CONSOLE CONTROL BOX COMPONENTS				
REF.	PART NO.	QTY.	PART NAME	DESCRIPTION
ASM	LA-248411	1	EM ASM, CAB CONSOLE BOX	
1	LM-241121	1	EM, CAB CONTROL BOX	
2	LM-241111	1	EM, CAB CONTROL BOX LID	
3	LM-243061	1	EM PLT, CAB CONTROL BOX MNT	
4	EC-101874	1	SWITCH, TOGGLE, DP ON-OFF-ON 3 POS.	
5	EC-138731	1	SWITCH, TOGGLE, DP (ON)-OFF-(ON), 3 POS.	
6	EC-136211	1	3AG FUSE HOLDER	
7	EC-136221	1	AGC-6A FUSE	
8	EC-101876	1	LAMP, INDICATOR	
9	EC-101877	1	BULB, INDICATOR LAMP	
10	EC-138791	1	STRAIN RELIEF, NYLON, BLK	
11	EC-138801	1	STRAIN RELIEF NUT, NYLON, BLK	
CAB CONSOLE CONTROL BOX FASTENERS				
REF.	PART NO.	QTY.	PART NAME	WHERE USED
A	MC-139941	2	#14 X 3/4 HEX CAP METAL SCREW	BRACKET TO CONSOLE
B	F-PHM-#6C12	2	PHMS 6-32 X 3/4	MOUNTS CONTROL BOX TO BRACKET
B	F-HNF-#6C	2	FLHN 6-32	MOUNTS CONTROL BOX TO BRACKET
MAIN ELECTRICAL BOX COMPONENTS				
REF.	PART NO.	QTY.	PART NAME	DESCRIPTION
ASM	LA-249111	1	EM ASM, CONTROLLER	
12	LP-234652	1	EM MOUNT, CONTROL BOX	
13	LP-249121	1	EM PLATE, MAIN CONTROL	
14	EC-100002	1	LEVELING CONTROLLER, LOW SPEED	
15	EC-100003	1	LEVELING CONTROLLER, HIGH SPEED	
16	EC-138781	2	STRAIN RELIEF, NYLON, BLK, 1/2 NPT	
17	EC-100557	2	BODY, LIMIT SWITCH	
18	EC-100692	2	HEAD, LIMIT SWITCH STRAIGHT PLUNGER	
19	EC-138751	1	DEUTSCH, RECEPTICAL	
20	EC-138771	1	DEUTSCH, PANEL LOCK WASHER	
21	EC-138761	1	DEUTSCH, PANEL NUT	
22	EC-138741	1	DEUTSCH PLUG	
MAIN ELECTRICAL BOX FASTENERS				
REF.	PART NO.	QTY.	PART NAME	WHERE USED
C	F-THMS-06C16	2	THMS 3/8-16 X 1, SLT, SERR	CONTROLLER MOUNTING PLATE
C	F-HNF-06C	2	HN 3/8-16, FLNG, SERR	CONTROLLER MOUNTING PLATE
C	F-LWE-06	1	LW 3/8, EXTERNAL STAR	CONTROLLER MOUNTING PLATE
D	F-THMS-04C12	6	THMS 1/4-20 X 3/4, SLT, SERR	CONTROLLERS TO PLATE
D	F-HNF-04C	6	HN 1/4-20, FLNG, SERR	CONTROLLERS TO PLATE
E	F-PHM-#10C28	4	PHMS 10-24 X 1-3/4	LIMIT SWITCHES TO PLATE
E	F-HNF-#10C	4	HN 10-24, FLNG, SERR	LIMIT SWITCHES TO PLATE
F	F-HNF-10MF	4	FLHN-8.8 M10 X 1.50	PLATE TO OVERCARRIAGE
F	F-HC-10M025F	4	HC-8.8 M10 X 1.50 X 25	PLATE TO OVERCARRIAGE
NS	F-THMS-04C12	1	THMS 1/4-20 X 3/4, SLT, SERR	GROUND WIRE
NS	F-HNF-04C	1	HN 1/4-20, FLNG, SERR	GROUND WIRE

ELECTRICAL CABLES & CONNECTORS



#1 LA-248421
EM CABLE ASM, LEVELING VALVE



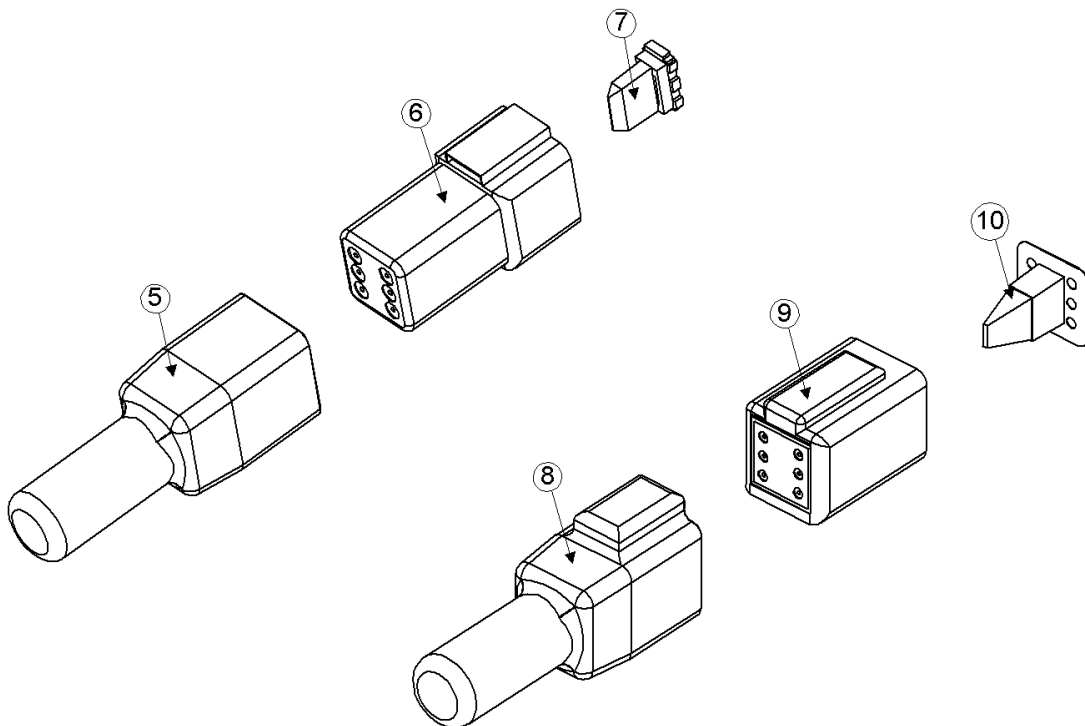
#2 LA-254481
EM CABLE ASM, LIMIT SWITCH



#4 LA-261741
EM CABLE ASM, CAB TO BOX



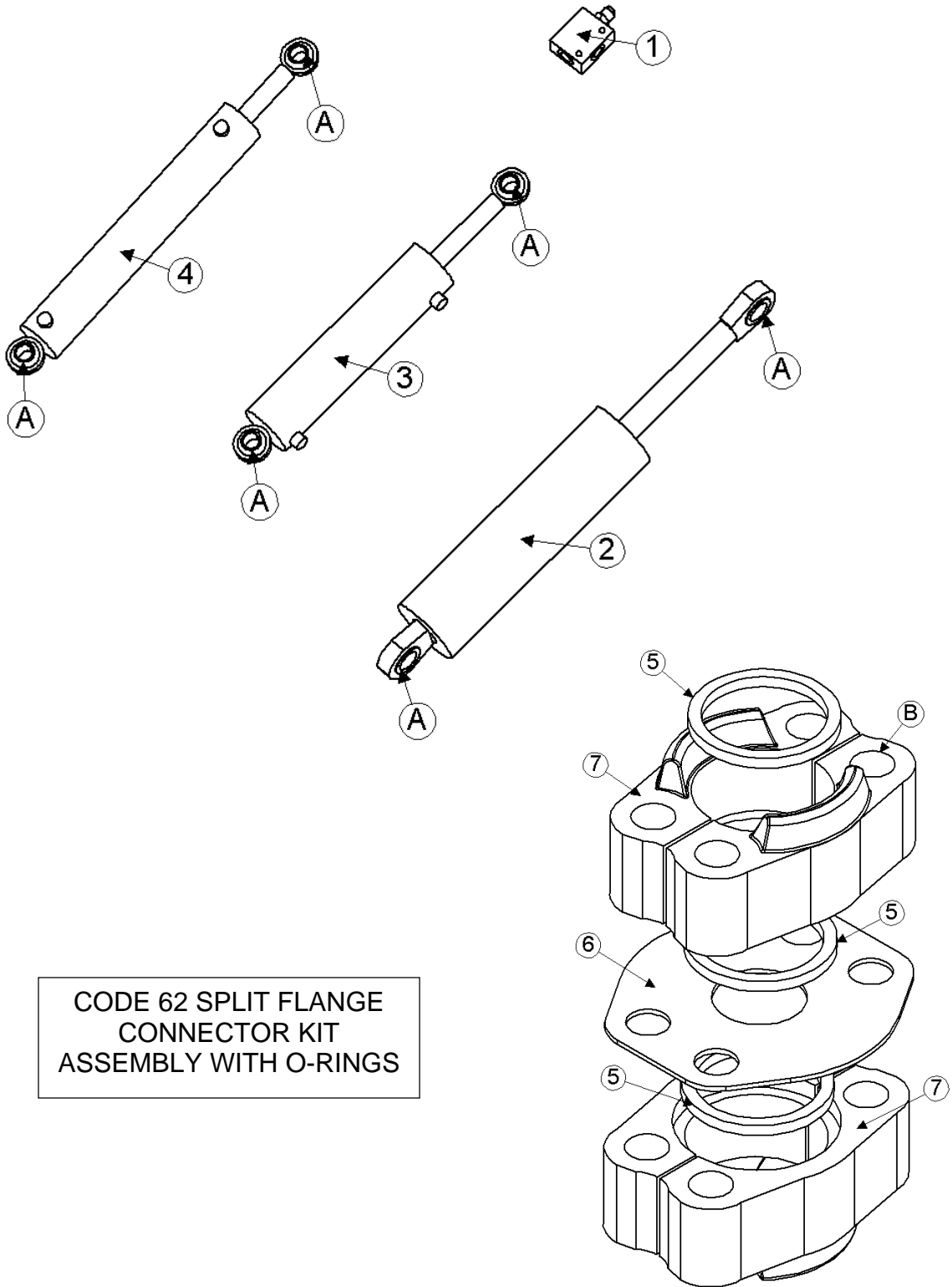
#3 LA-250071
EM CABLE ASM, JD MANIFOLD



Model 2970 Hillco Leveling System
For Serial Numbers 2970-0022 thru 2970-0028

ELECTRICAL CABLES				
REF.	PART NO.	QTY.	PART NAME	DESCRIPTION
1	LA-248421	1	EM CABLE ASM, LEVELING VALVE	
2	LA-254481	1	EM CABLE ASM, LIMIT SWITCH	
3	LA-250071	1	EM CABLE ASM, JD MANIFOLD	
4	LA-261741	1	EM CABLE ASM, CAB TO BOX	
ELECTRICAL CONNECTORS				
REF.	PART NO.	QTY.	PART NAME	DESCRIPTION
NS	ET-SP-20	4	TERMINAL	
NS	ET-ST-20#6	18	TERMINAL	
NS	EC-100164	21	PIN, ELECTRICAL	
NS	EC-100628	6	PLUG, SEALING, 18 GAUGE	
NS	EC-100165	21	SOCKET, ELECTRICAL	
5	EC-100549	1	BOOT, 6 PIN	
6	EC-100554	1	RECEPTACLE, 6 PIN	
7	EC-100551	1	WEDGE, 6 PIN	
8	EC-100550	1	BOOT, 6 SOCKET	
9	EC-100553	1	PLUG, 6 SOCKET	
10	EC-100552	1	WEDGE, 6 SOCKET	

8 HYDRAULICS



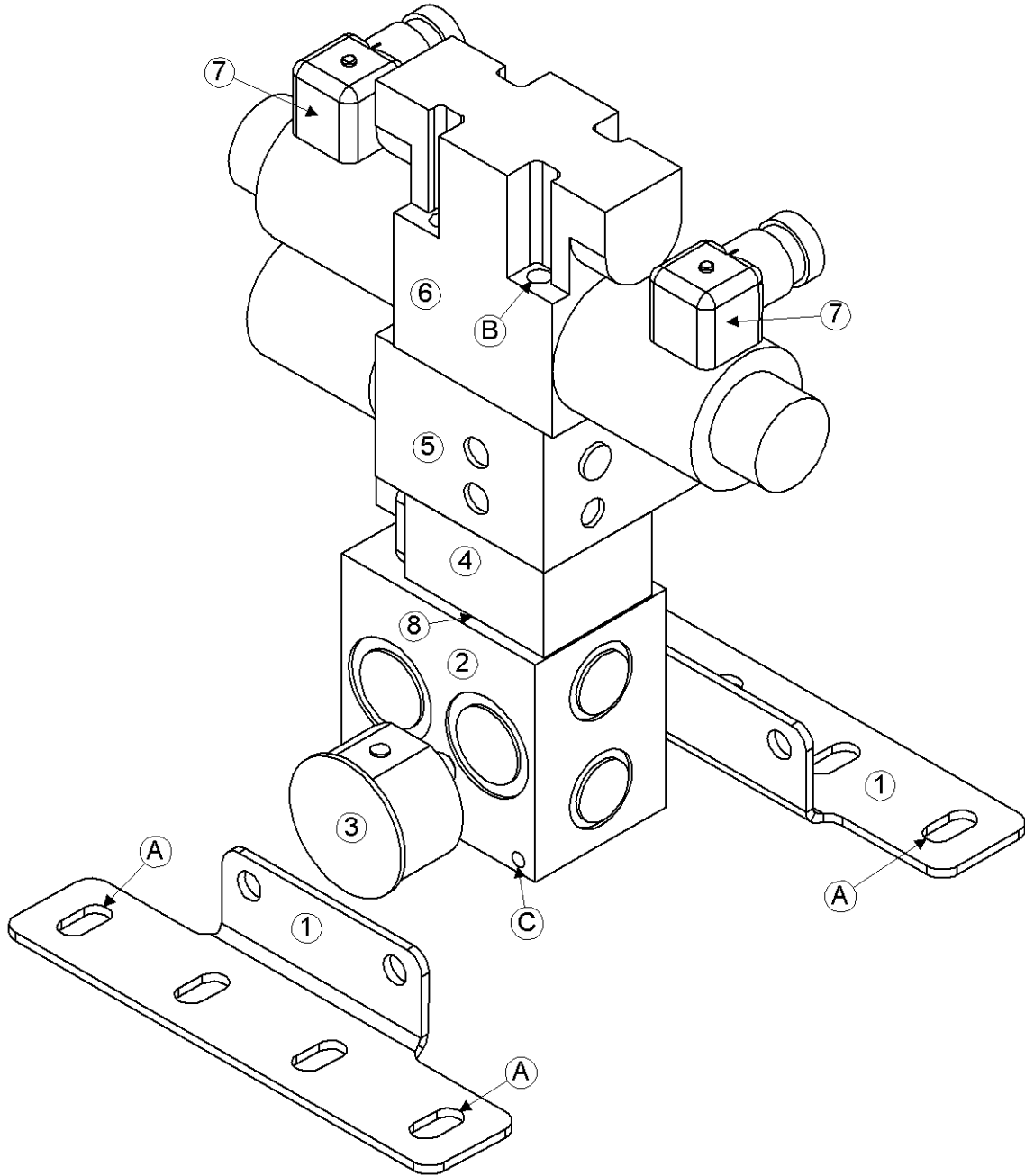
CODE 62 SPLIT FLANGE
CONNECTOR KIT
ASSEMBLY WITH O-RINGS

Model 2970 Hillco Leveling System
For Serial Numbers 2970-0022 thru 2970-0028

COUNTERBALANCE VALVE AND CYLINDERS				
REF.	PART NO.	QTY.	PART NAME	DESCRIPTION
1	HC-139151	2	VALVE, 3-PORT COUNTERBALANCE	
..	HC-139181	2	BODY, COUNTERBALANCE VALVE	
..	HC-139161	2	CARTRIDGE, COUNTERBALANCE VALVE	
NS	HC-140361	2	SEAL KIT, COUNTERBALANCE VALVE	
2	HC-103227	2	CYLINDER, MAIN	
NS	HC-134251	2	SEAL KIT, MAIN CYLINDER	
3	HC-101842	1	CYLINDER, MASTER	
NS	HC-134201	1	SEAL KIT, MASTER CYLINDER	
4	HC-100706	1	CYLINDER, SLAVE	
NS	HC-134191	1	SEAL KIT, SLAVE CYLINDER	
HYDRAULIC FASTENERS				
REF.	PART NO.	QTY.	PART NAME	WHERE USED
A	F-SSS-04F04	8	SET SCREW, SOCKET 1/4-28 X 1/4	ALL CYLINDERS
CODE 62 SPLIT FLANGE CONNECTOR KIT ASSEMBLY				
REF.	PART NO.	QTY.	PART NAME	DESCRIPTION
ASM	HC-101843	2	CODE 62 SLT FLNG CONNECTOR KIT WITH O-RINGS	FWD AND REAR PROPULSION HOSE
5	HC-134911	6	O-RING, CODE 62 CONNECTOR	
6	HC-137897	2	PLATE, CODE 62	
7	HC-137901	4	CODE 62, #16 SPLIT FLANGE KIT	
B	F-HC8-07C44	8	HC8 7/16 X 2-3/4	
B	F-HN8-07C	8	HN8 7/16-14	

Model 2970 Hillco Leveling System
For Serial Numbers 2970-0022 thru 2970-0028

HYDRAULIC MANIFOLD

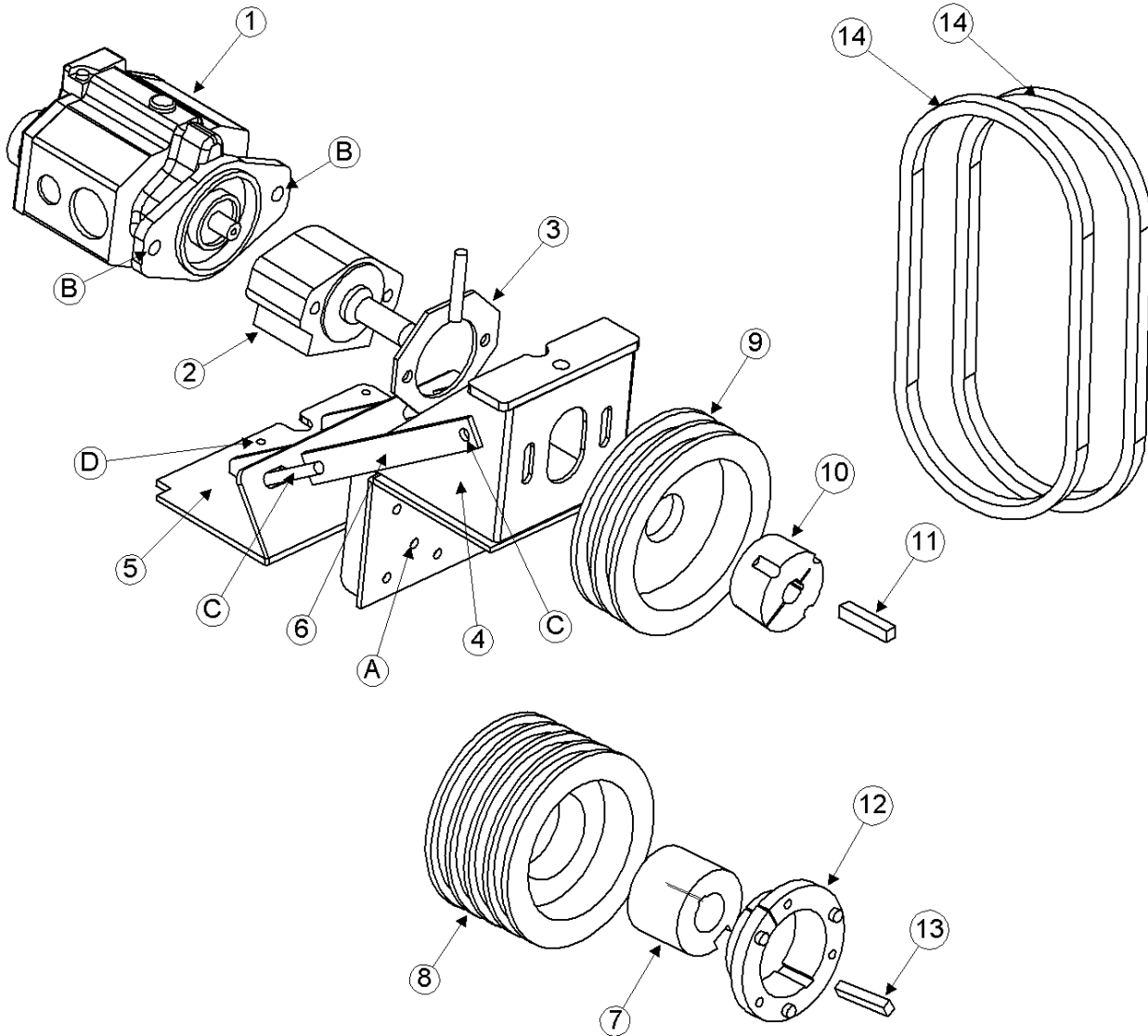


Model 2970 Hillco Leveling System
For Serial Numbers 2970-0022 thru 2970-0028

MANIFOLD COMPONENTS				
REF.	PART NO.	QTY.	PART NAME	DESCRIPTION
1	LP-250041	2	HM PLT, MANIFOLD MNT	
2	HC-138861	1	MANIFOLD, SINGLE STATION	
3	HC-101019	1	3000 PSI PRESSURE GUAGE WITH 1/4" MALE PIPE FITTING	
4	HC-101264	1	LOAD SENSE SHUTTLE ASM	
..	HC-101021	1	CARTRIDGE, LOAD SENSE VALVE	
..	HC-101022	1	BODY, LOAD SENSE VALVE	
NS	HC-102082	1	SEAL KIT, LOAD SENSE SHUTTLE ASM	
5	HC-138841	1	VALVE, HIGH SPEED	
6	HC-139781	1	VALVE, DIRECTIONAL CONTROL	
NS	LM-250091	1	ORIFICE, .147	DIRECTIONAL VALVE "P" PORT
7	HC-140291	2	PLUG, DIN LIGHTED	
8	HC-142761	1	D03 SUBPLATE	
MANIFOLD FASTENERS				
REF.	PART NO.	QTY.	PART NAME	WHERE USED
A	F-HC-8M030F	8	HC-8.8 M8 X 1.25 X 30	MANIFOLD BRACKET
A	F-HNF-08MF	8	FLHN-8.8 M8 X 1.25	MANIFOLD BRACKET
B	LM-249691	4	HM STUD, MANIFOLD LEVELING	
B	HC-139871	4	NUT, STUD, 10-24	
C	F-HCF-05C08	4	HC5 5/16-18 X 1/2, FLNG	

Model 2970 Hillco Leveling System
For Serial Numbers 2970-0022 thru 2970-0028

HYDRAULIC PUMP

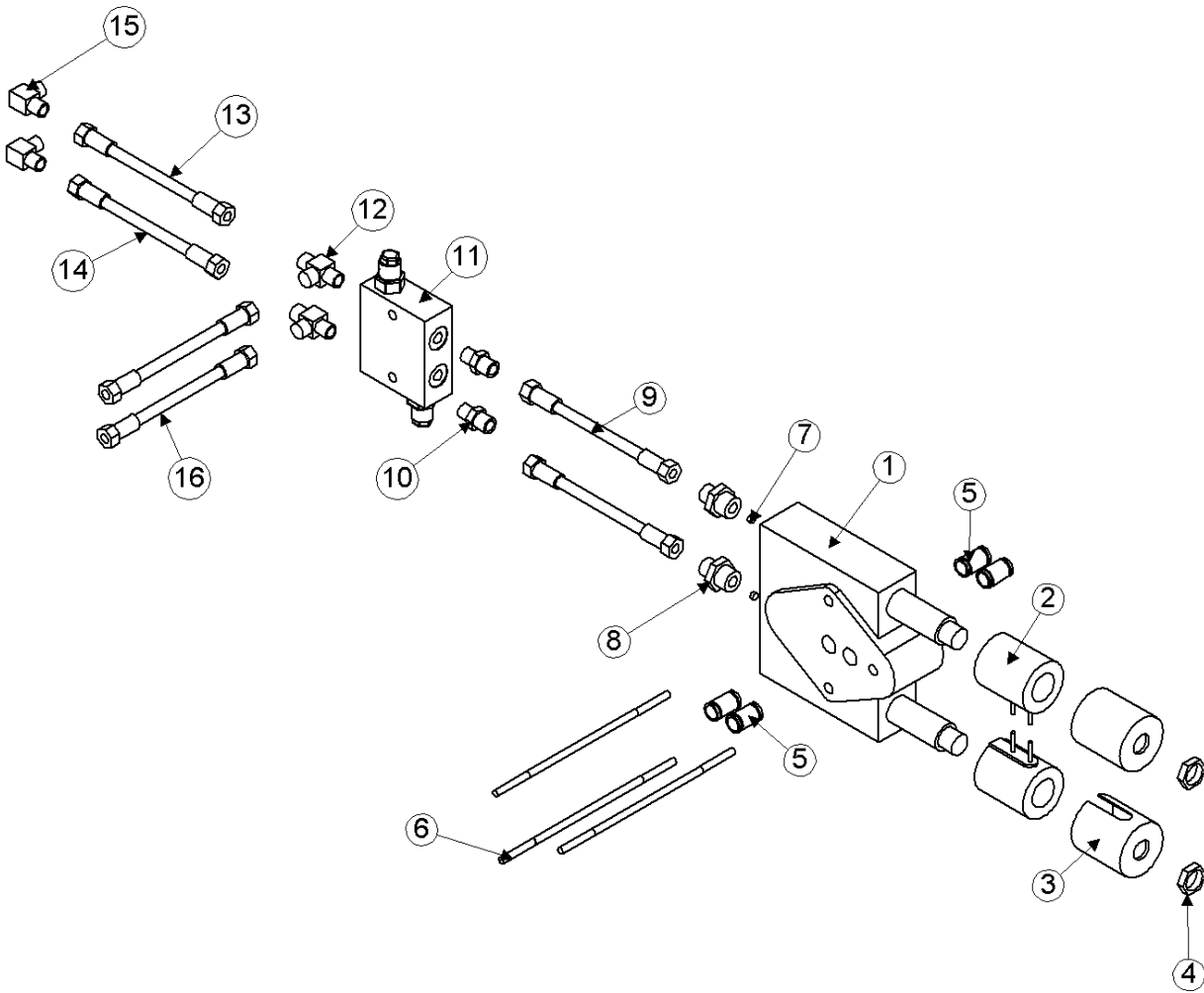


Model 2970 Hillco Leveling System
For Serial Numbers 2970-0022 thru 2970-0028

PUMP DRIVE COMPONENTS				
REF.	PART NO.	QTY.	PART NAME	DESCRIPTION
1	HC-133151	1	PUMP, HYDRAULIC PFC-116	
NS	HC-135231	1	SEAL KIT, PUMP	
..	HC-135241	1	SEAL, PUMP MAIN SHAFT	
..	HC-135251	2	SEAL, PINTILE SHAFT	
..	HC-103099	1	COMPENSATOR #2	
..	HC-137061	1	KEY, HYDRAULIC PUMP SHAFT	
2	HC-133161	1	ADAPTER, OVER-HUNG LOAD (200)	
NS	LA-140351	1	REBUILD KIT, 210 OHLA	
3	LA-235271	1	HM PUMP DR, MOUNT PLT ASM	
4	LA-235261	1	HM PUMP DR, ASM	
5	LA-238821	1	HM ASM, PUMP MNT ANCHOR	
6	LA-238791	2	HM ASM, PUMP MNT DRAW BOLT	
7	LM-235281	1	HM PUMP DR, HUB	
8	MC-134321	1	SHEAVE, 4 GROOVE 8"	
9	MC-134502	1	SHEAVE, 2 GROOVE 7.5"	
10	MC-134342	1	BUSHING, TAPER LOCK, 1"	
11	LM-235291	1	HM KEY, OHLA	
12	MC-134351	1	BUSHING, TAPER LOCK, 3-1/2"	
13	LM-236611	1	KEY, 3-1/2", QD HUB	
14	MC-140371	2	BELT, DRIVE	C-54 V-BELT
PUMP DRIVE COMPONENTS				
REF.	PART NO.	QTY.	PART NAME	WHERE USED
A	F-HC-10M040E	5	HC-10.9 M10 X 1.50 X 40	HYDRAULIC PUMP MOUNT
A	F-HNF-10ME	5	FLHN-10.9 M10 X 1.50	HYDRAULIC PUMP MOUNT
B	F-HC-10M110E	2	HC-10.9 M10 X 1.50 X 110	PUMP/OHLA TO BRACKET
B	F-HNF-10ME	2	FLHN-10.9 M10 X 1.50	PUMP/OHLA TO BRACKET
C	F-HNF-12ME	6	FLHN-10.9 M12 X 1.75	PUMP MNT DRAW BOLT
C	F-HC-12M030E	2	HC-10.9 M12 X 1.75 X 30	PUMP MNT DRAW BOLT
D	F-HCF-10M030E	4	FLHC-10.9 M10 X 1.50 X 30	PUMP MNT ANCHOR

Model 2970 Hillco Leveling System
For Serial Numbers 2970-0022 thru 2970-0028

HEADER TILT VALVE



Model 2970 Hillco Leveling System
For Serial Numbers 2970-0022 thru 2970-0028

HEADER TILT VALVE				
REF.	PART NO.	QTY.	PART NAME	DESCRIPTION
1	HC-136511	1	LATERAL TILT VALVE	
2	HC-136561	2	COILS	
3	HC-136571	2	COIL COVERS	
4	HC-136581	2	COIL COVER NUTS	
5	HC-136551	4	SHORT THROUGH TUBES	
6	LP-248471	3	ALL THREAD, B7, 1/4-20 X 15.625	
7	LM-254541	2	HM ORIFICE, TRIM VALVE (DRILLED TO .040)	
8	HA-S-4MF8MO	2	#4 MORS X #8 MORB ADAPTER	
9	LA-139111	1	1/4" 100R2 83-1/2" #4 FORS X #4 FORS	
9	LA-139111	1	1/4" 100R2 83-1/2" #4 FORS X #4 FORS	
10	HA-S-4MF4MO	2	#4 MORB X #4 MORS STR	
11	HC-138691	1	MANIFOLD, RELIEF VALVE	
12	HA-T-4MF4MO	2	#4 MORB X #4 MORS STR THREAD RUN TEE	
13	LA-139531	1	1/4" 100R2 295" #4 FORS X #6 FORS	SLAVE CYLINDER ROD TO RELIEF VALVE #2
14	LA-139541	1	1/4" 100R2 309" #4 FORS X #6 FORS	SLAVE CYLINDER BASE TO RELIEF VALVE #1
15	HA-L-4MF6MO	2	#4 MORS X #6 MORB 90°	SLAVE CYLINDER
16	LA-139141	1	1/4" 100R2 114-1/2" #4 FORS X #4 FORS	RELIEF VALVE #1 TO MASTER BASE
16	LA-139141	1	1/4" 100R2 114-1/2" #4 FORS X #4 FORS	RELIEF VALVE #2 TO MASTER ROD

Model 2970 Hillco Leveling System
For Serial Numbers 2970-0022 thru 2970-0028

HYDRAULIC HOSES

REF.	PART NO.	QTY.	PART NAME	NOTES
MAIN LEVELING CYLINDER HOSES				
NS	LA-140071	2	1/4 100R2 HOSE 79-1/2" #6 FORS 90° X #6 FORS STR	L OR R POCV #3 TO L OR R POCV #2
NS	LA-140081	2	1/2 100R2 HOSE 70-1/2" #8 FORS STR X #8 FORS STR	L OR R ROD TO POCV #2
GREASE HOSES				
NS	LA-140091	1	3/16 R1 GREASE HOSE 95-3/4" 1/8 MPT X 1/8 MPT	LH MAIN LEV CYL BASE TO BH #1
NS	LA-140101	1	3/16 R1 GREASE HOSE 48" 1/8 MPT X 1/8 MPT	RH MAIN LEV CYL BASE TO BH #2
NS	LA-140111	1	3/16 R1 GREASE HOSE 64" 1/8 MPT X 1/8 MPT	MSTR BASE TO BH #3
NS	LA-140121	1	3/16 R1 GREASE HOSE 26" 1/8 MPT X 1/8 MPT	MSTR ROD TO BH #4
NS	LA-138961	1	3/16 R1 GREASE HOSE 78-1/2" 1/8 MPT X 1/8 MPT	MAIN PVT TO BH #5
BRAKE HOSES				
NS	LA-130371	1	#4 TITE FLEX 31" #4 FORS X #4 MORS	BRAKE HOSE RIGHT
NS	LA-130371	1	#4 TITE FLEX 31" #4 FORS X #4 MORS	BRAKE HOSE LEFT
NS	HA-133131	2	TEFLON O-RING	FOR ABOVE TWO BRAKE HOSES
MANIFOLD TO LEFT LEVELING CYLINDER HOSES				
NS	LA-139521	1	1/2 100R2 HOSE 186" #8 FORS X #8 FORS	LEVELING VALVE PORT A & B TO LEFT MAIN LEV CYL
NS	LA-140131	1	1/2 100R2 HOSE 241" #8 FORS X #8 FORS	LEVELING VALVE PORT A & B TO RIGHT MAIN LEV CYL
MANIFOLD TO PUMP HOSES				
NS	LA-134821	1	1/4 100R2 HOSE 167" #4 FORS X #4 FORS 90°	LOAD SENSE LINE
NS	LA-134831	1	3/4 100R2 HOSE 167" #10 FORS X #10 FORS	PRESSURE FROM PUMP TO MANIFOLD
NS	LA-134841	1	3/4 100R1 HOSE 39-1/2" #10 FORS X #12 FORS 90°	RETURN LINE
PUMP HOSES				
NS	LA-134861	1	1 100R1 HOSE 66-1/2" #16 FORS X #16 FORS	PUMP SUCTION
NS	LA-134871	1	3/8 100R2 HOSE 65-1/2" #6 FORS X #6 FORS 90°	PUMP CASE DRAIN TO RESEVOIR
HYDROSTAT HOSES				
NS	LA-140381	1	1 100R15 68" CODE 62 SLT FLNG 180° X CODE 62 SPLT FLNG STR	HYDROSTAT FRONT
NS	LA-140391	1	1 100R15 58" CODE 62 SLT FLNG 180° X CODE 62 SPLT FLNG STR	HYDROSTAT REAR
NS	LA-140401	1	3/4 100R1 HOSE 38-1/2" #12 MORS X #12 FORS 45°	HYDRO MOTOR CASE DRAIN
TRIM HOSES				
NS	LA-139111	2	1/4" 100R2 79-1/2" #4 FORS X #4 FORS	LEVELING VALVE TO TO RELIEF VALVE
NS	LA-139141	2	1/4" 100R2 110-1/2" #4 FORS X #4 FORS	RELIEF VALVE TO MASTER
NS	LA-139531	1	1/4" 100R2 295" #4 FORS X #6 FORS	RELIEF TO SLAVE BASE
NS	LA-139541	1	1/4" 100R2 309" #4 FORS X #6 FORS	RELIEF TO SLAVE ROD

Model 2970 Hillco Leveling System
For Serial Numbers 2970-0022 thru 2970-0028

HYDRAULIC ADAPTERS

REF.	PART NO.	QTY.	PART NAME	NOTES
MAIN CYLINDERS				
NS	HA-L-8FF8MF	2	#8 FORS X #8 MORS 90°	POCV #2 LEFT AND RIGHT
NS	HA-L-8MO8MO	2	#8 MORB X #8 MORB 90°	L & R POCV #1
NS	HA-T-8MO8MO	2	#8 MORB X #8 MORS STR THREAD RUN TEE	L & R POCV #2
NS	HA-Q-8MF8MO	2	#8 MORB X #8 MORS STR THREAD BRANCH TEE	L & R MAIN CYL ROD
NS	HA-L-6MF6MO	2	#6 MORB X #6 MORS 90°	L & R POCV #3
NS	HA-S-8FF6MF	2	#8 FORS X #6 MORS REDUCER	L & R POCV #2
MASTER AND SLAVE CYLINDERS				
NS	HA-L-4MF6MO	2	#4 MORS X #6 MORB 90°	MASTER CYL ROD AND BASE PORTS
NS	HA-L-6MF6MO	2	#6 MORS X #6 MORB 90°	SLAVE CYL ROD AND BASE PORTS
PUMP ADAPTERS				
NS	HA-S-12MO16MF	1	12 MORB X 16 MORS STR	PUMP SUCTION
NS	HA-T-16MF16MO	1	#16 MORB X #16 MORS STR THREAD RUN TEE	PUMP SUCTION AT RESEVOIR
NS	HA-L-16FF16MF	1	#16 MORS X #16 FORS 90°	PUMP SUCTION AT RESEVOIR
NS	HA-S-10MF10MO	1	10 MORB X 10 MORS STR	PUMP PRESSURE
NS	HA-T-6MF6MO	1	#6 MORB X #6 MORS STR THREAD RUN TEE	CASE DRAIN AT RESEVOIR
NS	HA-C-6FF	1	#6 FORS CAP	CASE DRAIN AT RESEVOIR
NS	HA-L-4MF4MO	1	#4 MORB X #4 MORS 90°	PUMP LOAD SENSE
NS	HA-S-6MF6MO	1	#6 MORB X #6 MORS STR	PUMP CASE DRAIN
MANIFOLD ADAPTERS				
NS	HA-S-10MF10MO	1	10 MORB X 10 MORS STR.	"P" & "T" PORTS
NS	HA-L-10FF10MF	1	10 FORS X 10 MORS 90	"P" & "T" PORTS
NS	HA-S-4MF4MO	1	4 MORB X 4 MORS STR	LOAD SENSE SHUTTLE
NS	HA-A-10MO	1	10 MORB ALLEN HEAD PLUG	"T" PORT
NS	HA-S-10MF10MO	1	10 MORB X 10 MORS STR.	TANK OUT
NS	HA-L-10FF10MF	1	10 FORS X 10 MORS 90	TANK OUT
NS	HA-L-8MF8MO	2	#8 MORB X #8 MORS 90	"A" & "B" LEVELING PORTS
NS	HA-S-4FP10MO	1	#10 MORB X #4 FNPT STR.	PRESSURE GUAGE
NS	HA-M-12MF12FF	1	#12 ORS SWIVEL NUT RUN TEE	RETURN LINE
LATERAL TILT VALVE				
NS	HA-S-4MF8MO	2	#8 MORB X #4 MORS STR	LATERAL TILT VALVE
LATERAL TILT RELIEF VALVE				
NS	HA-S-4MF4MO	2	#4 MORB X #4 MORS STR	LATERAL TILT RELIEF VALVE
NS	HA-T-4MF4MO	2	#4 MORB X #4 MORS STR THREAD RUN TEE	LATERAL TILT RELIEF VALVE
HEADER LIFT CYLINDERS				
NS	HA-L-8FF8MF	1	#8 FORS X #8 MORS 90°	HEADER LIFT CYLINDER HOSE BULKHEAD
GREASE FITTINGS				
NS	HA-S-2FP2MN	5	1/8" NPSM X 1/8" FPT BULKHEAD CONNECTOR	GREASE BULKHEAD MOUNT
NS	HA-NJ-2FN	5	1/8" NPSM BULKHEAD LOCKNUT	BULKHEAD CONNECTOR
NS	HC-138011	5	1/4-28 STRAIGHT ZERK	ALL GREASE LINES
NS	HA-L-2FP2MP	1	1/8 MPT 90 STREET EL	MAIN PIVOT PIN
NS	HC-135771	3	1/4-28 MALE X 1/8 FPT 90°	MASTER CYLINDER BASE, MAIN LEV CYL BASE
NS	HC-135881	1	1/4-28 MALE X 1/8 FPT STR	MASTER ROD
HYDROSTAT				
NS	HA-134791	2	CODE 62 X #16 ORS 90°	HYDROSTAT LINES

Model 2970 Hillco Leveling System
 For Serial Numbers 2970-0022 thru 2970-0028

9 MISCELLANEOUS

MISCELLANEOUS DOCUMENTS & LABELS				
REF.	PART NO.	QTY.	PART NAME	NOTES
NS	LL20-100784	2	DANGER PINCH POINT	RH & LH UPPER TRANS FACE PLT
NS	LL20-100786	1	WARNING ELECTRONIC CRUSHING HAZARD	CONTROL BOX LID (INST)
NS	LL20-100783	6	DANGER, CRUSHING HAZARD	2-DROP AXLE END PLATES, 4-RT & LT UC FRONT AND BACK
NS	LL-133731	1	LABEL, GREASE 10 HRS	Rear Axle
NS	LL-133731	2	LABEL, GREASE 10 HRS	OC BULKHEAD
NS	LL-133731	1	LABEL, GREASE 10 HRS	RH TRANS SIDE PLT (FOR SLAVE CYL)
NS	LL-133731	2	LABEL, GREASE 10 HRS	MAIN LEV CYL BOTTOM (RH & LH)
NS	LL-133731	1	LABEL, GREASE 10 HRS	1-TRANSITION PIVOT PIN
NS	LL-138441	1	DECAL, CAB CONTROL BOX	
NS	LL20-100790	1	PLATE, SERIAL NUMBER	
NS	D-010823DJC01	1	MANUAL, OPERATOR'S	
NS	D-010725CLA01	1	MANUAL, INSTALLATION	
NS	D-060510ADL01A	1	MANUAL, PARTS	
NS	LA-251701	1	SAFETY LABEL PACKET	
NS	..	1	LL20-100782--CAUTION LEVELING SYSTEM CAB	WINDOW IN CAB
NS	..	1	LL20-100785--CAUTION MOVING STEP	LADDER
NS	..	2	LL20-100787--CAUTION LEVELING SYSTEM HAZARD	GULL WINGS
NS	..	3	LL20-100788--DANGER HYDRAULIC HAZARD	1 EA MAIN CYLINDER; 1 ABOVE MANIFOLD

10 PART NUMBER INDEX

PART NUMBER	PAGE NUMBER	PART NUMBER	PAGE NUMBER	PART NUMBER	PAGE NUMBER
D-010725CLA01	9-1	F-HC-16M110E	3-4	HA-C-6FF	8-10
D-010823DJC01	9-1	F-HC-16M120E	2-4	HA-L-10FF10MF	8-10
D-060510ADL01A	9-1	F-HC-16M190E	5-2	HA-L-16FF16MF	8-10
EC-100002	7-2	F-HC-16M250E	5-2	HA-L-2FP2MP	8-10
EC-100003	7-2	F-HC-24M070E	4-2	HA-L-4MF4MO	8-10
EC-100164	7-4	F-HC-24M110E	4-2	HA-L-4MF6MO	8-8, 8-10
EC-100165	7-4	F-HC8-07C44	8-2	HA-L-6MF6MO	8-10
EC-100549	7-4	F-HC8-08F20	2-6	HA-L-8FF8MF	8-10
EC-100550	7-4	F-HC8-12C240	3-4	HA-L-8MF8MO	8-10
EC-100551	7-4	F-HC-8M030F	8-4	HA-L-8M08MO	8-10
EC-100552	7-4	F-HCF-05C08	8-4	HA-M-12MF12FF	8-10
EC-100553	7-4	F-HCF-10M020E	2-4, 3-4	HA-NJ-2FN	8-10
EC-100554	7-4	F-HCF-10M020F	2-4	HA-Q-8MF8MO	8-10
EC-100557	7-2	F-HCF-10M030E	8-6	HA-S-10MF10MO	8-10
EC-100628	7-4	F-HCF-12M025F	3-4	HA-S-12M016MF	8-10
EC-100692	7-2	F-HCF-12M040E	2-4	HA-S-2FP2MN	8-10
EC-101874	7-2	F-HCF-12M080E	2-4	HA-S-4FP10MO	8-10
EC-101876	7-2	F-HCF-16M040E	2-4	HA-S-4MF4MO	8-8, 8-10
EC-101877	7-2	F-HCF-16M080E	3-4	HA-S-4MF8MO	8-8, 8-10
EC-136211	7-2	F-HN8-07C	8-2	HA-S-6MF6MO	8-10
EC-136221	7-2	F-HNF-#10C	7-2	HA-S-8FF6MF	8-10
EC-138731	7-2	F-HNF-#6C	7-2	HA-T-16MF16MO	8-10
EC-138741	7-2	F-HNF-04C	2-4, 7-2	HA-T-4MF4MO	8-8, 8-10
EC-138751	7-2	F-HNF-06C	7-2	HA-T-6MF6MO	8-10
EC-138761	7-2	F-HNF-08MF	6-2, 8-4	HA-T-8M08MO	8-10
EC-138771	7-2	F-HNF-10ME	8-6	HC-100706	2-2, 8-2
EC-138781	7-2	F-HNF-10MF	2-4, 3-4, 7-2	HC-101019	8-4
EC-138791	7-2	F-HNF-12ME	8-6	HC-101021	8-4
EC-138801	7-2	F-HNF-12MF	2-4	HC-101022	8-4
ET-SP-20	7-4	F-HNJ-05C	6-2	HC-101264	8-4
ET-ST-20#6	7-4	F-HNJ-12MF	2-4	HC-101842	3-2, 8-2
F-CB-10M030F	2-4	F-HNS-12C	3-4	HC-101843	8-2
F-CB-12M040F	2-4	F-HNS-12ME	4-2, 6-2	HC-102082	8-4
F-EB-04C20	2-4	F-HNS-16ME	2-4, 3-4, 5-2	HC-103099	8-6
F-FHS-8M015E	2-4	F-HNS-24ME	4-2	HC-103227	3-2, 8-2
F-FWF-06020	3-4	F-HNSF-12ME	2-4	HC-133151	8-6
F-FWH-08	2-4	F-LW-05	6-2	HC-133161	8-6
F-FWHD-10	3-4	F-LW-08A	2-6	HC-133891	5-2
F-HC-08M025F	6-2	F-LWE-06	7-2	HC-134191	2-2, 8-2
F-HC-08M035F	6-2	F-MB-14NR40	2-4	HC-134201	8-2
F-HC-10M025F	3-4, 7-2	F-MB-18NR24	4-2	HC-134251	8-2
F-HC-10M040E	8-6	F-PHM-#10C28	7-2	HC-134911	8-2
F-HC-10M040F	3-4	F-PHM-#6C12	7-2	HC-135231	8-6
F-HC-10M110E	8-6	F-SHC-10M070F	2-4	HC-135241	8-6
F-HC-12M030E	8-6	F-SSS-04F04	8-2	HC-135251	8-6
F-HC-12M030F	6-2	F-SSS-06C08	2-6	HC-135771	8-10
F-HC-12M040E	4-2	F-THMS-04C12	7-2	HC-135881	8-10
F-HC-12M050F	6-2	F-THMS-06C16	7-2	HC-136511	8-8
F-HC-12M060F	6-2	F-UDS-#7X06	3-4	HC-136551	8-8
F-HC-12M080E	4-2	HA-133131	8-9	HC-136561	8-8
F-HC-16M050E	2-4, 5-2	HA-134791	8-10	HC-136571	8-8
F-HC-16M060E	3-4	HA-A-10MO	8-10	HC-136581	8-8

Model 2970 Hillco Leveling System
 For Serial Numbers 2970-0022 thru 2970-0028

PART NUMBER INDEX (CONTINUED)

PART NUMBER	PAGE NUMBER	PART NUMBER	PAGE NUMBER	PART NUMBER	PAGE NUMBER
HC-137061	8-6	LA-235261	8-6	LM-248781	3-2
HC-137897	8-2	LA-235271	8-6	LM-249691	8-4
HC-137901	8-2	LA-235711	3-2	LM-249861	2-2
HC-138011	8-10	LA-235891	2-2	LM-250091	8-4
HC-138691	8-8	LA-236542	6-2	LM-254541	8-8
HC-138841	8-4	LA-236552	6-2	LP-103871	3-2
HC-138861	8-4	LA-236563	6-2	LP-213252	2-2
HC-139151	3-2, 8-2	LA-238761	6-2	LP-228881	2-2
HC-139161	8-2	LA-238791	8-6	LP-230241	3-2
HC-139181	8-2	LA-238821	8-6	LP-232162	2-2
HC-139781	8-4	LA-243131	3-2	LP-234652	3-2, 7-2
HC-139871	8-4	LA-248411	7-2	LP-248471	8-8
HC-140291	8-4	LA-248421	7-4	LP-249121	7-2
HC-140361	8-2	LA-249111	7-2	LP-249871	2-2
HC-142761	8-4	LA-249611	2-2	LP-250041	8-4
LA-130371	8-9	LA-250071	7-4	LS-212701	2-2
LA-134821	8-9	LA-251701	9-1	LS-244471	2-2, 2-6
LA-134831	8-9	LA-254481	7-4	LTP-241721	2-2
LA-134841	8-9	LA-261741	7-4	MC-100237	2-2
LA-134861	8-9	LL-133731	9-1	MC-100546	2-2
LA-134871	8-9	LL-138441	9-1	MC-100548	2-2
LA-138961	8-9	LL20-100782	9-1	MC-101339	2-2
LA-139111	8-8	LL20-100783	9-1	MC-134261	3-2
LA-139141	8-8	LL20-100784	9-1	MC-134271	3-2
LA-139521	8-9	LL20-100785	9-1	MC-134281	3-2
LA-139531	8-8, 8-9	LL20-100786	9-1	MC-134291	3-2
LA-139541	8-8, 8-9	LL20-100787	9-1	MC-134301	3-2
LA-140071	8-9	LL20-100788	9-1	MC-134311	3-2
LA-140081	8-9	LL20-100790	3-2, 9-1	MC-134321	8-6
LA-140091	8-9	LM-226532	2-2, 2-6	MC-134342	8-6
LA-140101	8-9	LM-226841	2-2	MC-134351	8-6
LA-140111	8-9	LM-228442	2-2	MC-134502	8-6
LA-140121	8-9	LM-229142	2-2	MC-134921	6-2
LA-140131	8-9	LM-229152	2-2	MC-134931	6-2
LA-140351	8-6	LM-229161	2-2	MC-134941	6-2
LA-140381	8-9	LM-229171	2-2	MC-135431	4-2
LA-140391	8-9	LM-229192	2-2	MC-135491	2-2
LA-140401	8-9	LM-234101	4-2	MC-135501	2-2
LA-228702	4-2	LM-235091	5-2	MC-135511	2-2
LA-228762	4-2	LM-235281	8-6	MC-135531	2-2
LA-228893	2-2	LM-235291	8-6	MC-136921	2-2, 2-6
LA-229022	2-2	LM-236053	6-2	MC-137521	3-2
LA-229051	2-2	LM-236232	2-2	MC-137531	3-2
LA-229071	2-2, 3-2	LM-236611	8-6	MC-139241	2-2
LA-229251	3-2	LM-236632	6-2	MC-139341	2-2
LA-230551	3-2	LM-237751	2-2	MC-139351	2-2
LA-234922	3-2	LM-237761	2-2	MC-139361	2-2
LA-234931	4-2	LM-238341	2-2	MC-139371	2-2
LA-234943	3-2	LM-241111	7-2	MC-139941	7-2
LA-234952	2-2	LM-241121	7-2	MC-140371	8-6
LA-234963	3-2	LM-241271	6-2	MC-142001	2-2
LA-234971	5-2	LM-243061	7-2	MC-142921	3-2