



For Serial Numbers:

250C010 - 250C012

250C95051501 - 250C95052602

2250-0001 - 2250-0006

2252-0001 - 2252-0002

2253-0001 - 2253-0009

2250-0007 - 2250-0021

Model 250 Leveling System Parts Book

GENERAL INFORMATION 1-2

TRANSITION 2-1

 1995-1996 Transition 2-1

 1997 Transition 2-3

 Slip Clutch Detail..... 2-5

LADDER 3-1

 Parallel Ladder (1995-1996)..... 3-1

 Linear Ladder (1997)..... 3-2

SWING ARMS AND REAR AXLE 4-1

 Right Swing Arm 4-1

 Left Swing Arm 4-2

 Frame Support and Rear Axle Stop..... 4-3

 Driveline 4-4

 Brakes 4-5

ELECTRICAL..... 5-1

 Control Box..... 5-1

 Console Box and Junction Box..... 5-3

 Cables and Connectors..... 5-4

HYDRAULIC 6-1

 Pump Drive..... 6-1

 Pump Assembly..... 6-2

 Compensator 6-4

 Reservoir 6-5

 Cylinders..... 6-6

 Hoses 6-7

 Adapters 6-8

 Manifold..... 6-9

 Directional Control Valve Detail 6-10

 Header Trim Relief Valve Detail..... 6-11

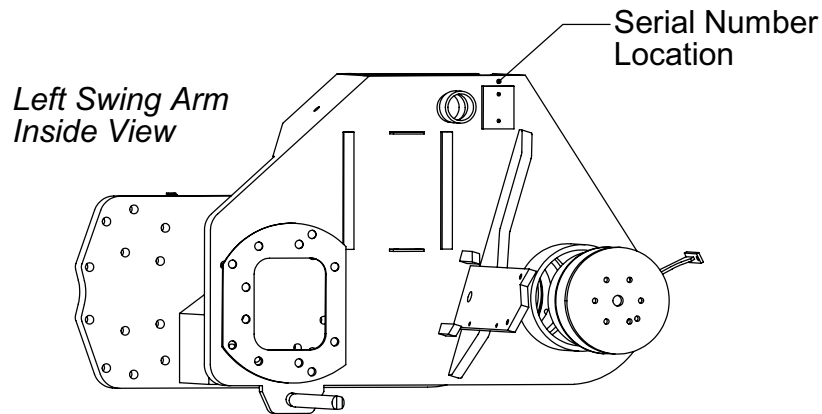
 Anti-Cavity Check and Safety Pressure Relief Valve Detail..... 6-12

 Pressure Compensated and Standard Flow Control Valve Detail..... 6-13

PART NUMBER INDEX 7-1

PRODUCTION YEAR AND SERIAL NUMBER CHART

1995 PRODUCTION	250C95051501	THRU	250C95052602
1996 PRODUCTION	2252-0001	THRU	2253-0009
	2250-0001	THRU	2250-0006
1997 PRODUCTION	2250-0007	THRU	2250-0021



Text Format and Illustrations

The arrangement of this parts catalog is for easy identification of parts. All parts are illustrated in exploded views in proper relation to each other. Reference numbers used in the illustrations refer to line numbers in the part lists for each grouping. The part lists reference number, part number, part description and the quantity required per leveling system. Some part lists also include the page numbers of additional part breakdown information and reference the location of the part on the combine.

Abbreviations

SN "Serial Number"

ASM "Assembly" refers to a permanent grouping of parts not sold separately.

NSS "Not Sold Separately"

NS "Not Shown" refers to a part that is not depicted in the illustration.

Right and Left Identification

The reference to right-hand and left-hand in this catalog is identified by the operator standing at the rear of the machine looking toward the front of the machine (in normal forward travel).

Catalog Revisions and Supplements

Changes to the product may make it necessary to revise or add pages to this catalog. A cover sheet will list all pages released in a revision or supplement. All revised and new pages must be put into the parts catalog as soon as they are received.

Parts Orders

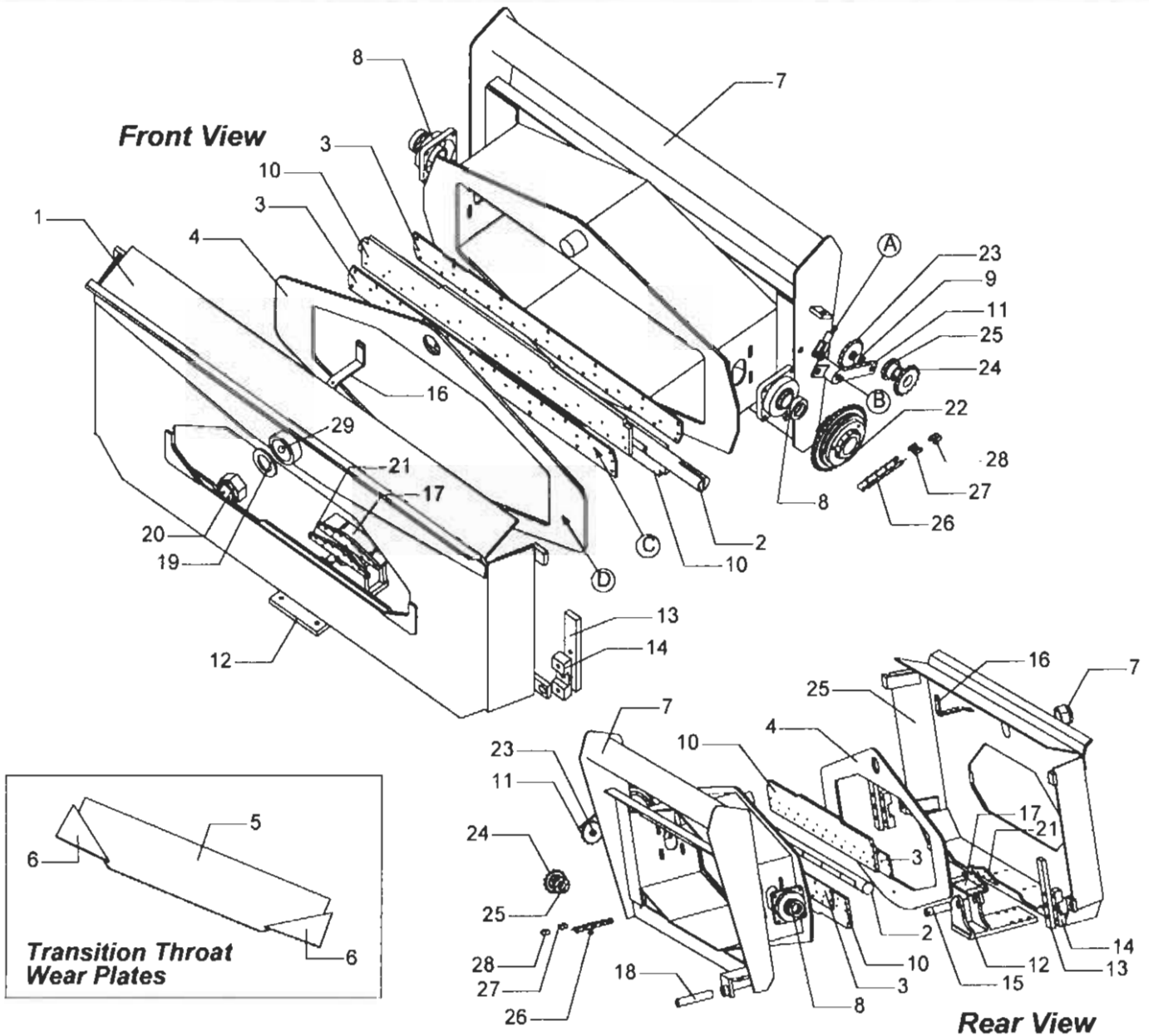
Orders must specify product model, serial number, correct part number, complete description, quantity required, method of shipment, shipping address, and billing address.

PRODUCTION YEAR AND SERIAL NUMBER CHART

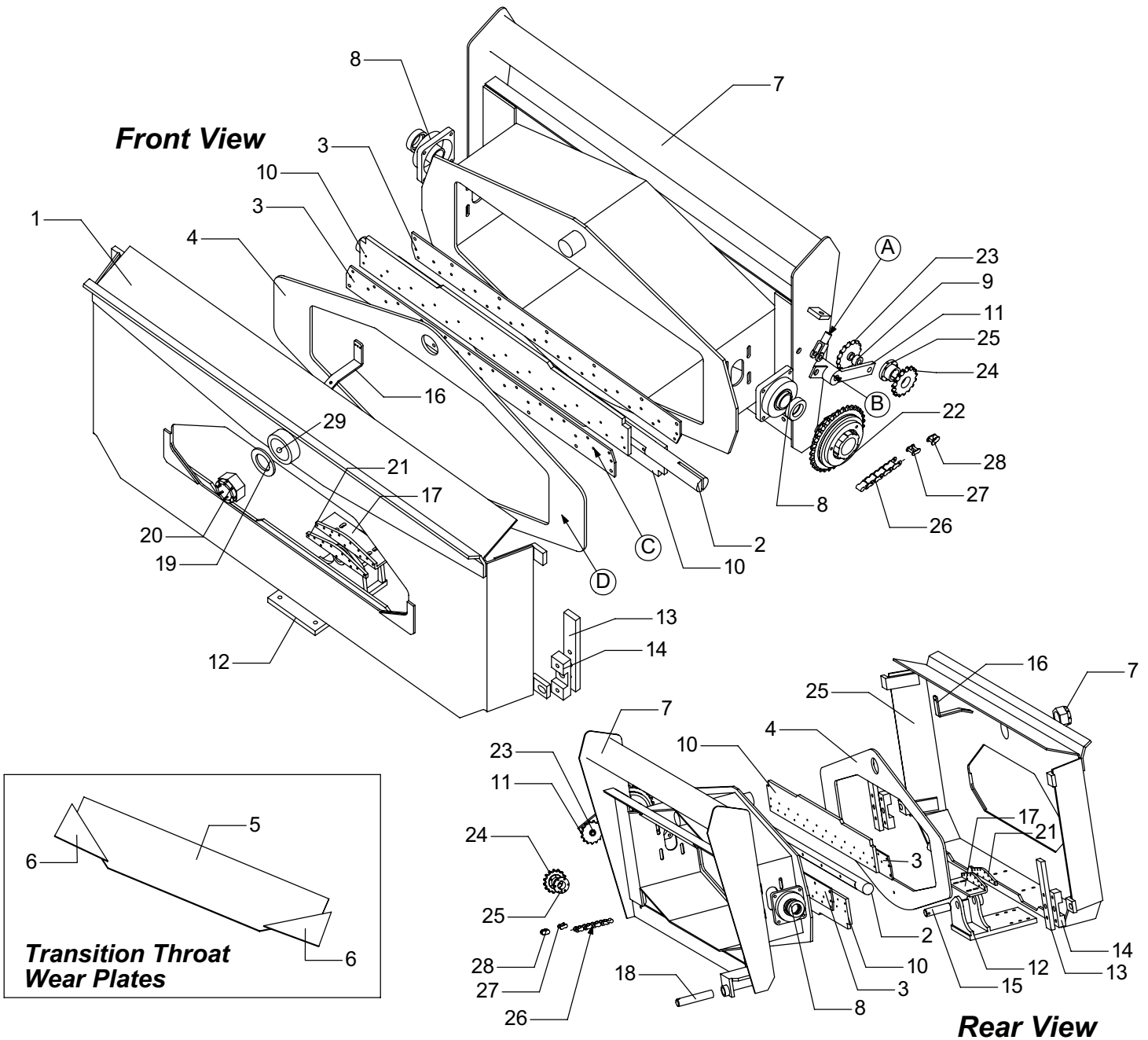
1995 PRODUCTION	250C95051501	THRU	250C95052602
1996 PRODUCTION	2252-0001	THRU	2253-0009
	2250-0001	THRU	2250-0006
1997 PRODUCTION	2250-0007	THRU	2250-0021

1995-1996 Transition

Hillco Model 250 Leveling System

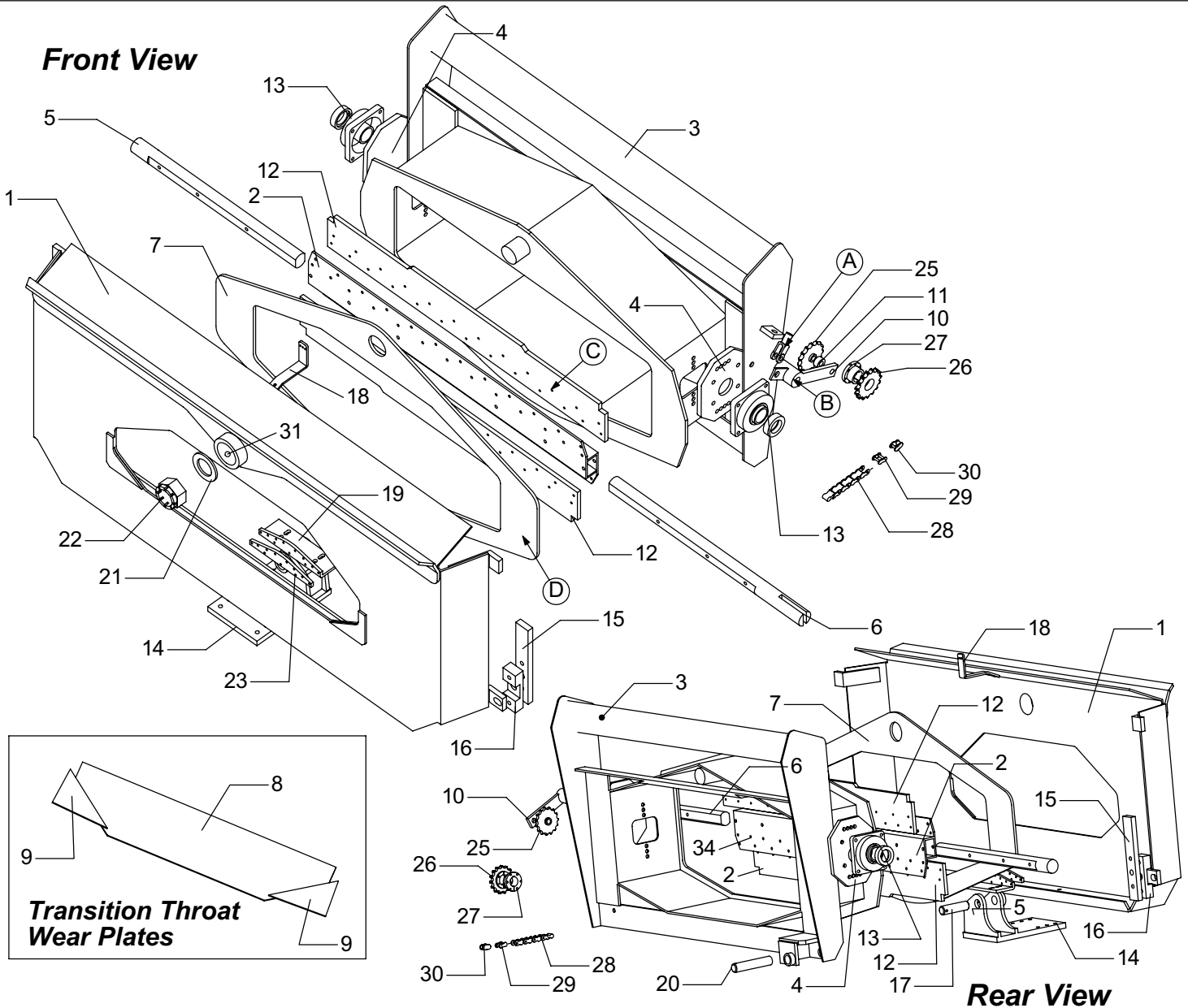


1995	1996	1997	MODEL	REF.	PART NUMBER	PART NAME	QTY	DESCRIPTION
X	X	NA		1	L25A-101752	ADAPTER ASM, HEADER	1	
X	X	NA		2	MFL25-101549	SHAFT, BEATER	1	
X	X	NA		3	MFL25-101547	PLATE, BEATER PADDLE BACKING	2	
X	X	X		4	MFL25-101582	PLATE, UHMW FRONT	1	
X	X	X		5	MFL25-101583	PLATE, TRANSITION FLOOR WEAR	1	
X	X	X		6	MFL25-101584	PLATE, TRANSITION FLOOR CORNER	2	
X	X	NA		7	L25A-101585	THROAT ASM, TRANSITION	1	
X	X	X		8	MC-10095901	BEARING, BEATER, 4 BOLT W/ LOCK COLLAR	2	1-15/16 BORE
X	X	X		9	MFL25-101546	SPACER, IDLER PULLEY	1	
X	X	X		10	MC-10112701	PADDLE, 250 BEATER	2	
X	X	X		11	L25A-101610	ARM ASM, IDLER PULLEY PIVOT	1	
X	X	X		12	L25A-101574	MOUNT ASM, SLAVE CYLINDER ROD	1	
X	X	X		13	MFL25-101555	INNER, HEADER LOCK	2	
X	X	X		14	MFL25-101556	OUTER, HEADER	2	
X	X	X		15	MFL25-101557	PIN, SLAVE CYLINDER ROD	1	
X	X	X		16	MFL25-101558	MOUNT, TRANSITION CABLE	1	

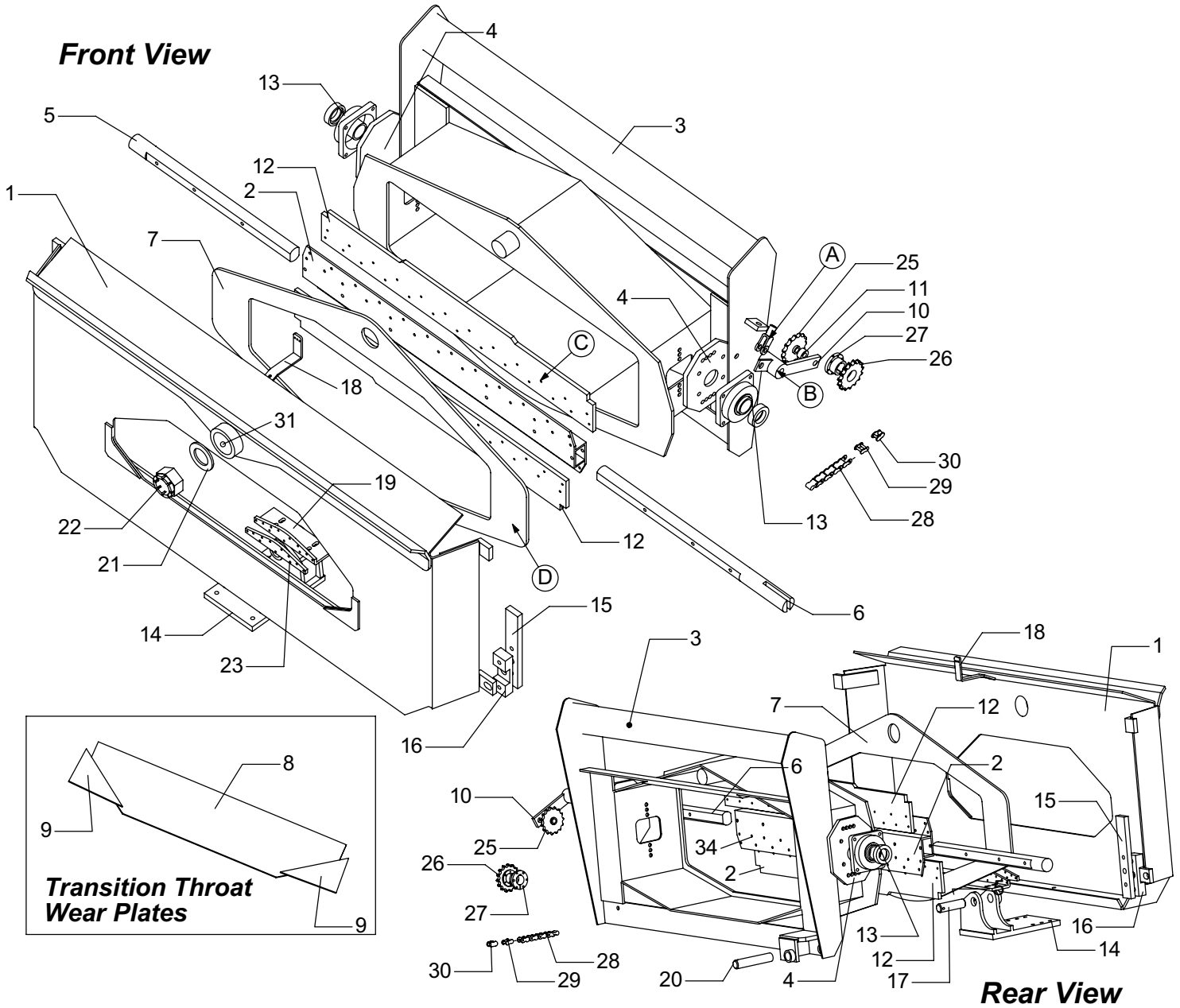


Rear View

1995	1996	1997	MODEL	REF.	PART NUMBER	PART NAME	QTY	DESCRIPTION
X	X	X		17	MFL25-101559	PLATE, TRANSITION BACKSTOP	1	
X	X	X		18	MFL25-101560	PIN, SLAVE CYLINDER BUTT	1	
X	X	X		19	MFL25-101561	WASHER, PIVOT	1	
X	X	X		20	MFL25-101562	NUT, HEADER PIVOT	1	
X	X	X		21	MFL25-101563	PLATE, BACKSTOP WEAR	1	
X	X	X		22	MC-10023401	SLIP CLUTCH ASM	1	SEE PAGE 2-5
X	X	X		23	MC-10023701	SPROCKET, IDLER	1	60P, 15T, 5/8 BORE
X	X	X		24	MC-10031901	SPROCKET, DRIVE	1	QD, 60P, 15T, HARDENED
X	X	X	2100	25	MC-10108201	HUB, DRIVE	1	1-3/8, TAPER LOCK
X	X	X	1600	25	MC-10019601	HUB, DRIVE	1	1-1/2 TAPER LOCK
X	X	X		26	MFL25-101087	CHAIN, ROLLER	1	60P
X	X	X		27	MC-10023901	LINK, CONNECTING	1	60P
X	X	X		28	MC-10024001	LINK, HALF	1	60P
X	X	X		29	MFL25-102654	BUSHING, TRANSITION HEADER ADAPTER PIVOT	1	
X	X	X		A	F-EYA-08C	YOKE, ADJUSTABLE END	1	1/2 in.
X	X	X		B	F-SS-12C48	BOLT, SHOULDER, 3/4-10 x 3	1	TENSIONER PIVOT
X	X	X		C	F-EB-04C20Z	BOLT, ELEVATOR, PLATED, 1/4-20 x 1-1/4	48	BEATER PADDLE
X	X	X		D	F-FHS-#10C08Z	BOLT, FLAT HEAD, SOCKET CAP, #10-24 x 1/2	140	UHMW MOUNT



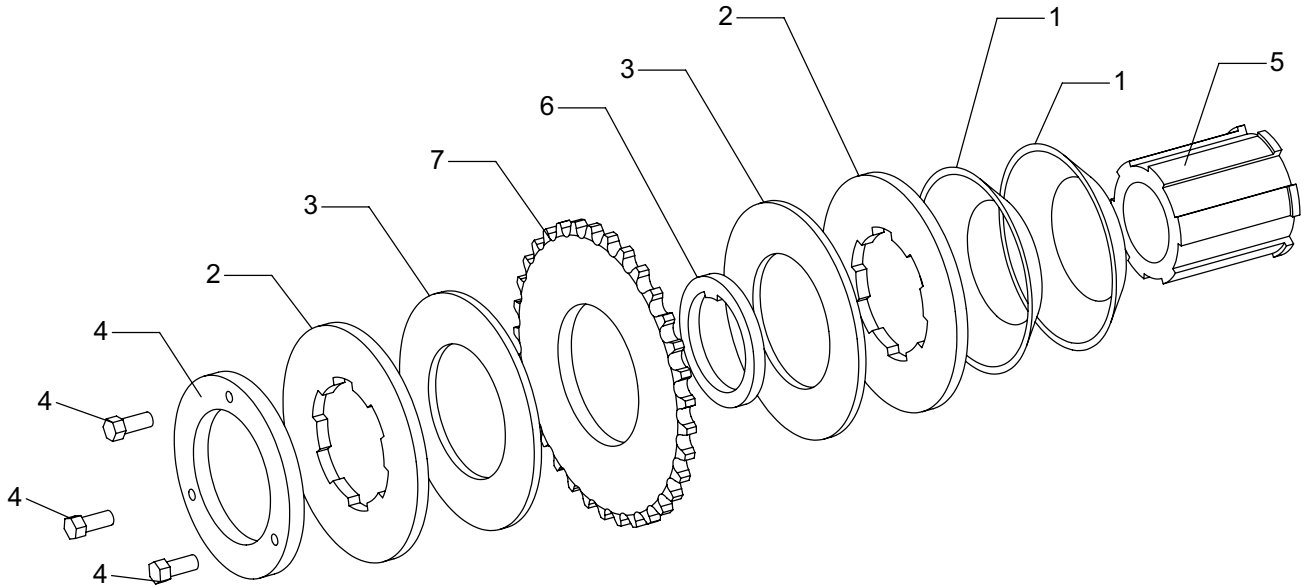
1995	1996	1997	MOD.	REF.	PART NUMBER	PART NAME	QTY	DESCRIPTION
NA	NA	X		1	L25A-101564	ADAPTER ASM, HEADER	1	
NA	NA	X		2	L25A-101553	PLATE ASM, BEATER PADDLE BACKING	1	
NA	NA	X		3	L25A-101586	THROAT ASM, TRANSITION	1	
NA	NA	X		4	MFL25-101550	PLATE, BEATER MOUNT	2	
NA	NA	X		5	MFL25-101551	SHAFT, BEATER	1	LEFT HALF
NA	NA	X		6	MFL25-101552	SHAFT, BEATER	1	RIGHT HALF
NA	NA	X		7	MFL25-102719	PLATE, UHMW FRONT	1	
X	X	X		8	MFL25-101583	PLATE, TRANSITION FLOOR WEAR	1	
X	X	X		9	MFL25-101584	PLATE, TRANSITION FLOOR CORNER WEAR	2	
X	X	X		10	L25A-101610	ARM ASM, IDLER PULLEY PIVOT	1	
X	X	X		11	MFL25-101546	SPACER, IDLER PULLEY	1	
X	X	X		12	MC-10112701	PADDLE, 250 BEATER	2	
X	X	X		13	MC-10095901	BEARING, BEATER, 4 BOLT W/ LOCK COLLAR	2	1-15/16 BORE
X	X	X		NS	MC-101979	BEARING, INSERT (FOR WEAR REPLACEMENT)	2	1-15/16 BORE
X	X	X		14	L25A-101574	MOUNT, SLAVE CYLINDER ROD	1	
X	X	X		15	MFL25-101555	INNER, HEADER LOCK	2	
X	X	X		16	MFL25-101556	OUTER, HEADER	2	



1995	1996	1997	MODEL	REF.	PART NUMBER	PART NAME	QTY	DESCRIPTION
X	X	X		17	MFL25-101557	PIN, SLAVE CYLINDER ROD	1	
X	X	X		18	MFL25-101558	MOUNT, TRANSITION CABLE	1	
X	X	X		19	MFL25-101559	PLATE, TRANSITION BACKSTOP	1	
X	X	X		20	MFL25-101560	PIN, SLAVE CYLINDER BUTT	1	
X	X	X		21	MFL25-101561	WASHER, PIVOT	1	
X	X	X		22	MFL25-101562	NUT, HEADER PIVOT	1	
X	X	X		23	MFL25-101563	PLATE, BACKSTOP WEAR	1	
X	X	X		24	MC-10023401	SLIP CLUTCH ASM	1	SEE PAGE 2-5
X	X	X		25	MC-10023701	SPROCKET, IDLER	1	60P, 15T, 5/8 BORE
X	X	X		26	MC-10031901	SPROCKET, DRIVE	1	QD, 60P, 15T, HARDENED
X	X	X	2100	27	MC-10108201	HUB, DRIVE	1	1-3/8, TAPER LOCK
X	X	X	1600	27	MC-10019601	HUB, DRIVE	1	1-1/2 TAPER LOCK
X	X	X		28	MFL25-101087	CHAIN, ROLLER	1	60P
X	X	X		29	MC-10023901	LINK, CONNECTING	1	60P
X	X	X		30	MC-10024001	LINK, HALF	1	60P
X	X	X		31	MFL25-102654	BUSHING, TRANSITION HEADER ADAPTER PIVOT	1	SUBS TO MFL20-100460
X	X	X		A	F-EYA-08C	YOKE, ADJUSTABLE END	1	1/2 in.
X	X	X		B	F-SS-12C48	BOLT, SHOULDER, 3/4 x 3	1	TENSIONER PIVOT
X	X	X		C	F-EB-04C20Z	BOLT, ELEVATOR, PLATED, 1/4-20 x 1-1/4	48	BEATER PADDLE
X	X	X		D	F-FHS-#10C08Z	BOLT, FLAT HEAD, SOCKET CAP, #10-24 x 1/2	140	UHMW MOUNT

Slip Clutch

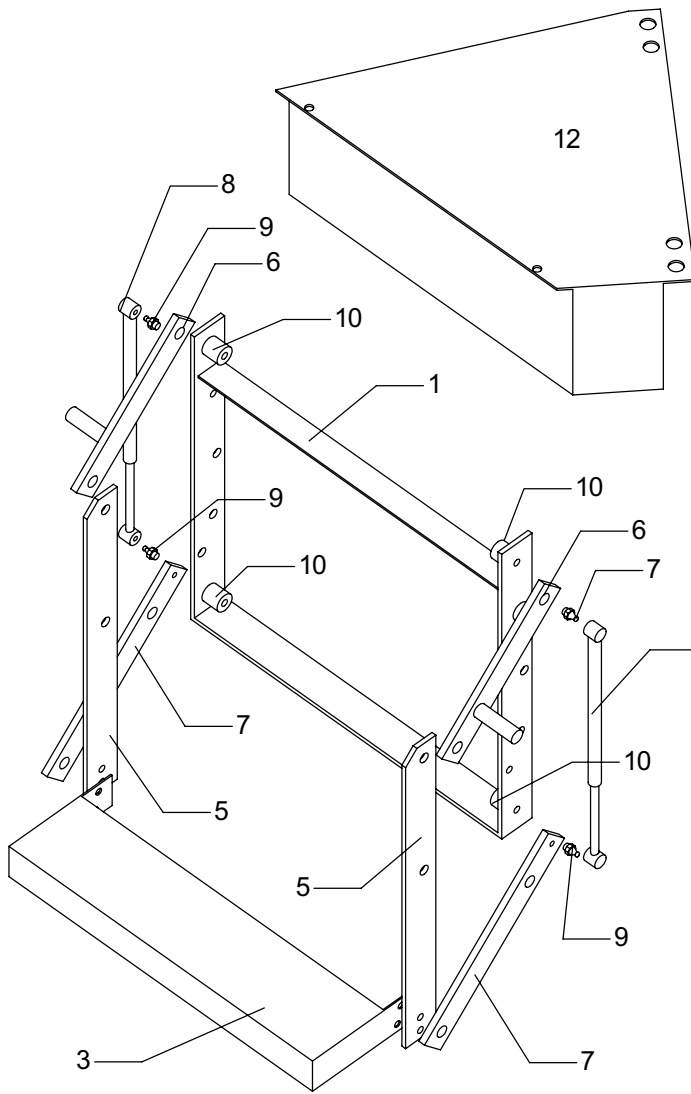
Hillco Model 250 Leveling System



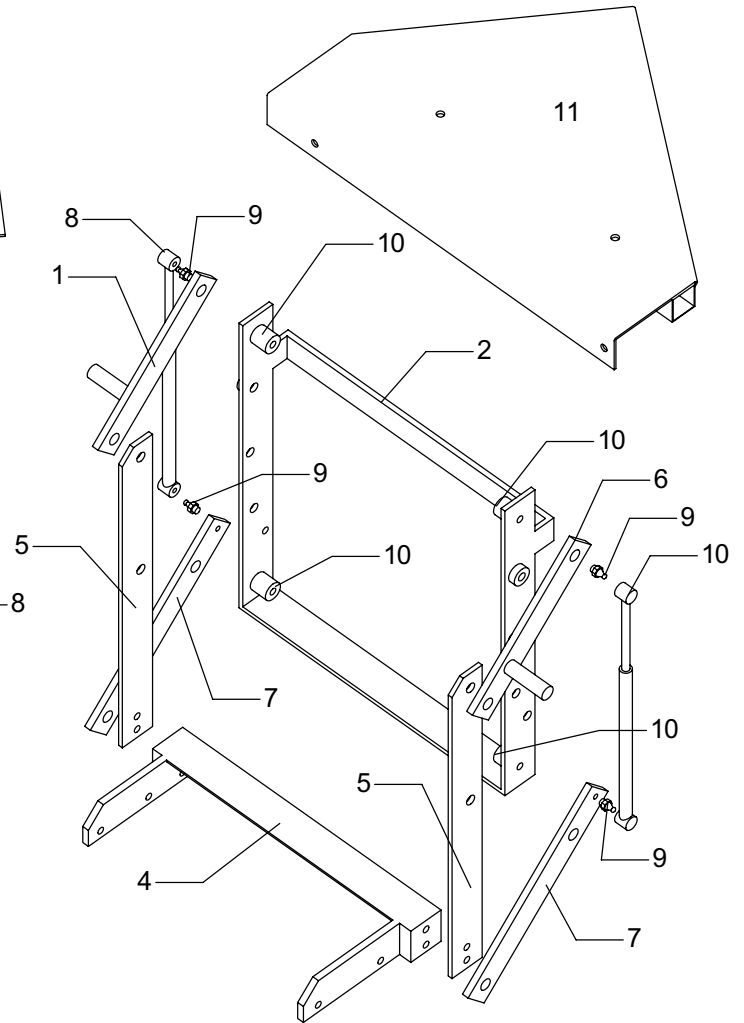
1995	1996	1997	MODEL	REF.	PART NUMBER	PART NAME	QTY	DESCRIPTION
X	X	X		1	MC-10032101	SPRING, BELVILLE	2	
X	X	X		2	MC-10032201	PLATE, BACK UP	2	
X	X	X		3	MC-10032301	DISKS, FRICTION PAIR	1	
X	X	X		4	MC-10032401	NUT, TENSIONING	1	
X	X	X		5	MC-10032601	HUB	1	1-15/16 BORE
X	X	X		6	MC-10032501	BUSHING, SINTERED	1	3/8
X	X	X		7	MFL25-101079	SPROCKET, PLATE	1	60P, 33T

Parallel Ladder

Hillco Model 250 Leveling System

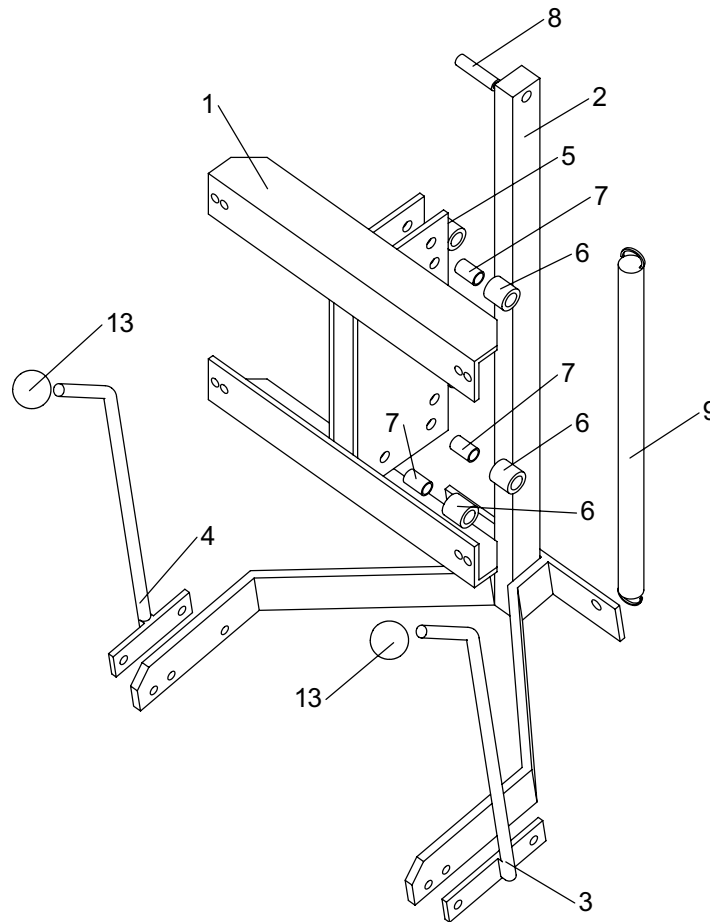


Model 1600 Ladder



Model 2100 Ladder

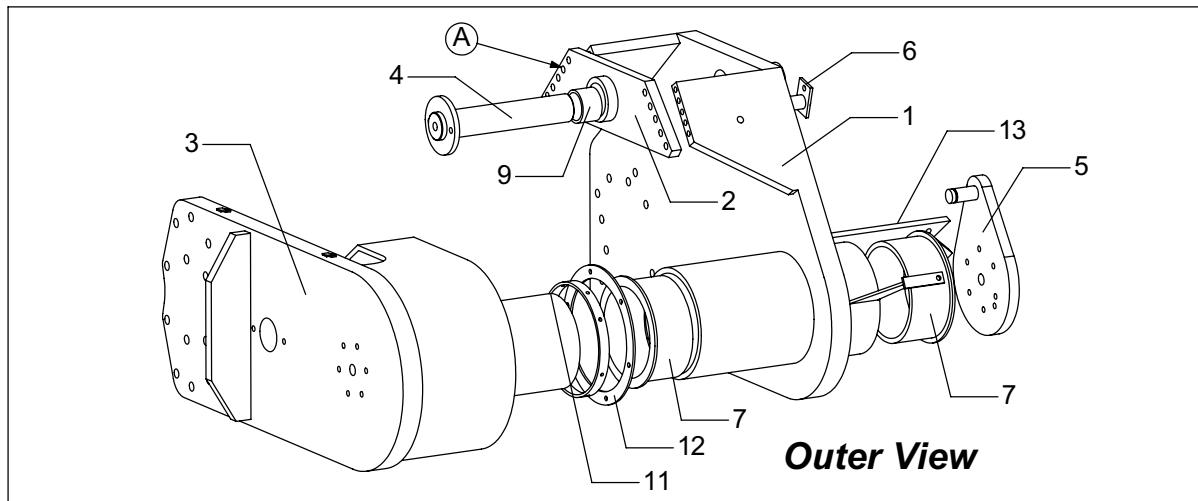
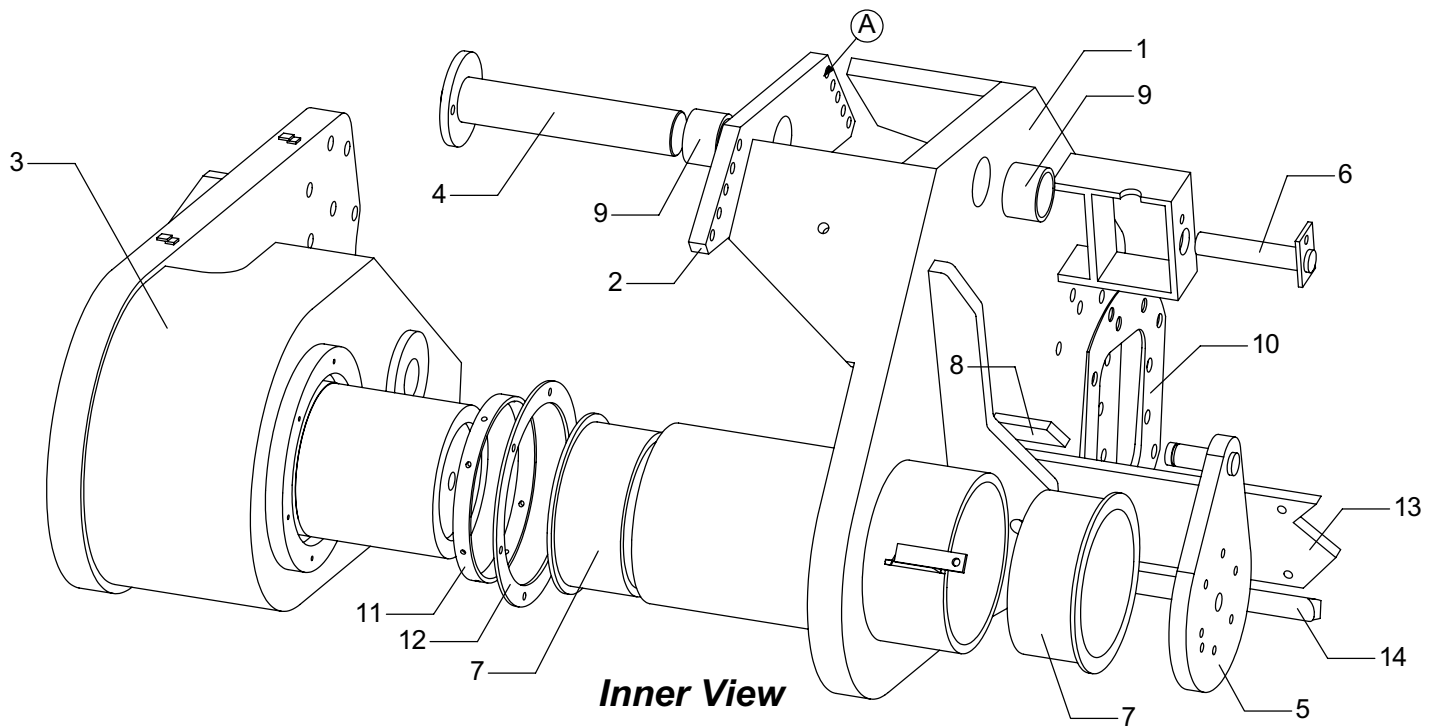
1995	1996	1997	MODEL	REF.	PART NUMBER	PART NAME	QTY	DESCRIPTION
X	X	NA	1600	1	L25A-101415	FRAME, LADDER MOUNT	1	
X	X	NA	2100	2	L25A-101424	FRAME, LADDER MOUNT	1	
X	X	NA	1600	3	L25A-101421	STEP, LADDER	1	
X	X	NA	2100	4	L25A-101430	STEP, LADDER	1	
X	X	NA		5	MFL25-101436	RAIL, STEP	2	
X	X	NA		6	MFL25-101437	STRAP, PARALLEL TOP	2	
X	X	NA		7	MFL25-101438	STRAP, PARALLEL BOTTOM	2	
X	X	NA		8	MC-10020501	SUPPORT, GAS CHARGED LIFT	2	
X	X	NA		9	MC-10020601	STUD, LIFT SUPPORT BALL	4	
X	X	NA		10	MC-10095601	BUSHING, PIVOT	8	
X	X	X	2100	11	L25A-101408	WEDGE, LADDER	1	
X	X	X	1600	12	L25A-101411	WEDGE, LADDER	1	



1995	1996	1997	MODEL	REF.	PART NUMBER	PART NAME	QTY	DESCRIPTION
NA	NA	X		1	L20A-101439	MOUNT ASSEMBLY	1	
NA	NA	X		2	L20A-101442	STEP ASSEMBLY	1	
NA	NA	X		3	L20A-101446	HANDLE ASSEMBLY	1	RIGHT HAND
NA	NA	X		4	L20A-101449	HANDLE ASSEMBLY, LH	1	LEFT HAND
NA	NA	X		5	MFL20-101452	BUSHING, SPACER	2	
NA	NA	X		6	MFL20-101453	ROLLER	4	
NA	NA	X		7	MC-10075901	BUSHING, BRONZE	4	
NA	NA	X		8	F-PR-08X32	PIN, ROLL, 1/2 X 2	1	
NA	NA	X		9	MC-10071001	SPRING, EXTENSION	2	
X	X	X	2100	10	L25A-101408	WEDGE, LADDER	1	
X	X	X	1600	11	L25A-101411	WEDGE, LADDER	1	
X	X	X	1600	12	MFL20-10079401	STRIP, WEDGE TREAD	1	
X	X	X		13	MC-10070901	KNOB, PLASTIC BALL	2	

Right Swing Arm

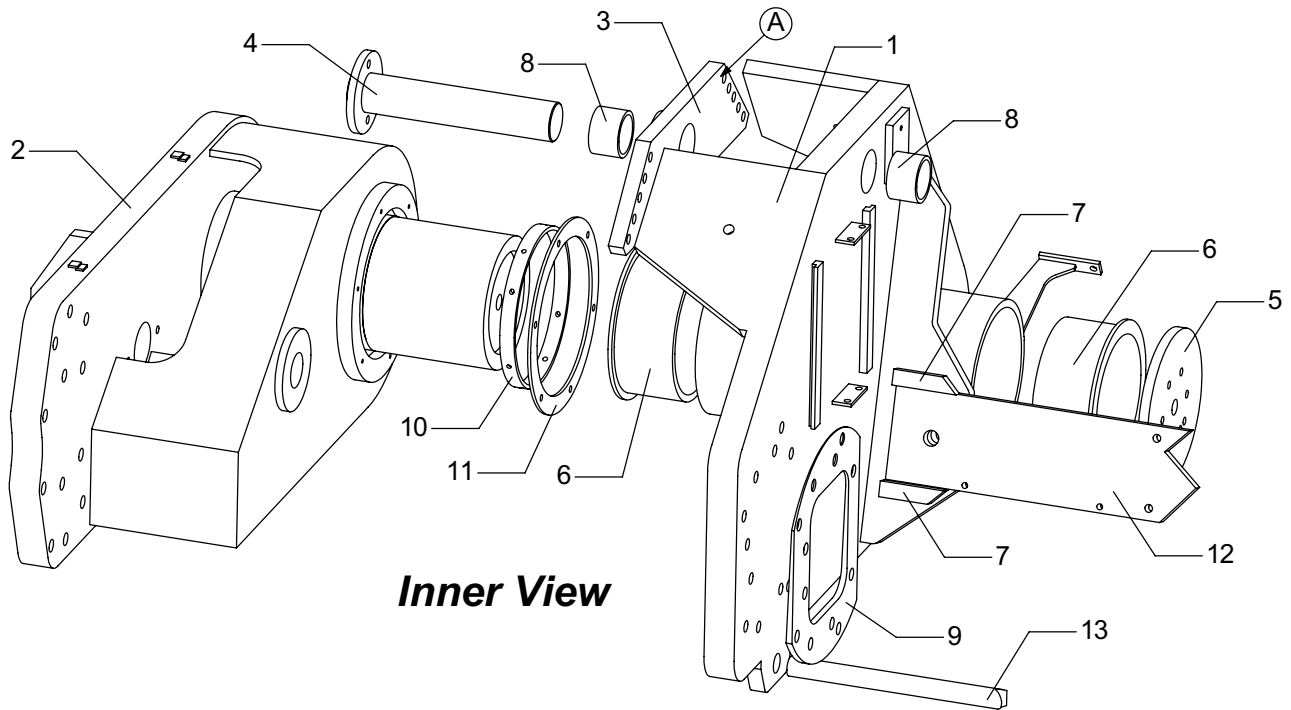
Hillco Model 250 Leveling System



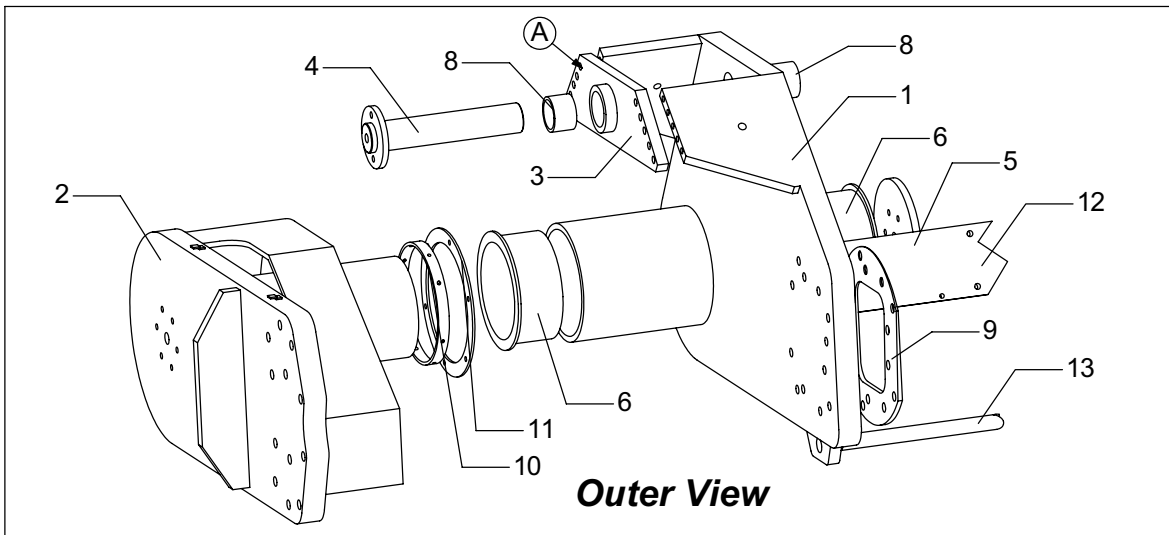
1995	1996	1997	MODEL	REF.	PART NUMBER	PART NAME	QTY	DESCRIPTION
X	X	X		1	L25A-101483	PLATE ASSEMBLY, INNER PLATE RH	1	
X	X	X		2	L25A-101525	PLATE, OUTER TRUNION MOUNT RH	1	
X	X	X		3	L25A-101530	ARM ASSEMBLY, OUTER RH	1	
X	X	X		4	L25A-101533	PIN, CYLINDER	1	
X	X	X		5	L25A-101536	CAP, TEAR DROP END	1	
X	X	X		6	L25A-101500	PIN, CYLINDER BUTT MOUNT	1	
X	X	X		7	MFL25-101466	BEARING, MAIN PIVOT	2	
X	X	X		8	MFL25-101467	BAR, GUSSET BOXING	2	
X	X	X		9	MFL25-101468	BUSHING, PIVOT	2	
X	X	X		10	MFL25-101469	SHIM, CAMBER	1	
X	X	X		11	MFL25-101503	BEARING, OUTER ARM	1	
X	X	X		12	MFL25-101504	RING OUTER ARM RETAINER	1	
X	X	X		13	MFL25-101470	SUPPORT, CROSS	1	
X	X	X		14	MFL25-101471	TRUSS, AXLE	1	
X	X	X		A	F-DW-12T	WASHER, TAPERED DOWEL, 3/4"	16	

Left Swing Arm

Hillco Model 250 Leveling System

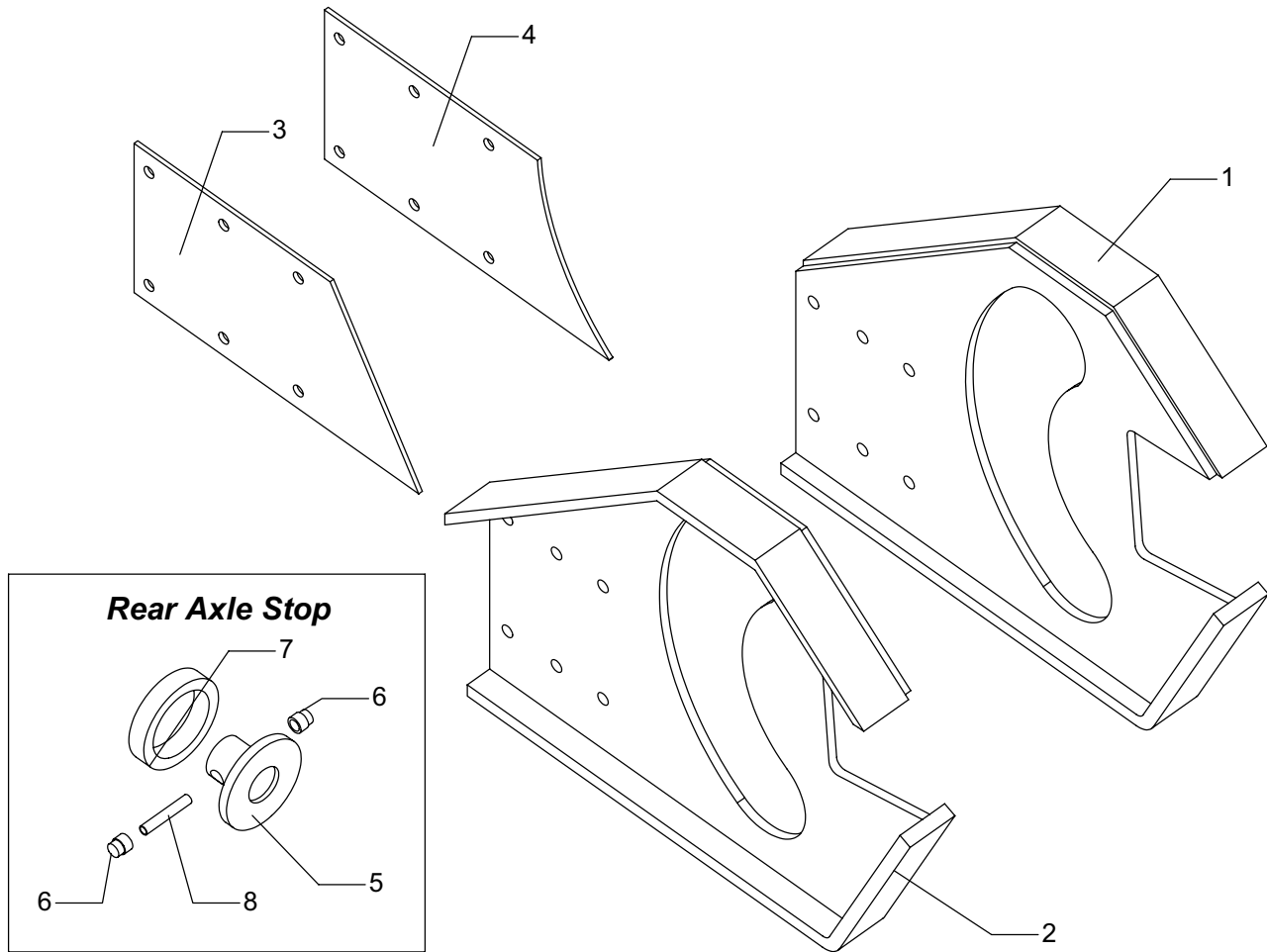


Inner View

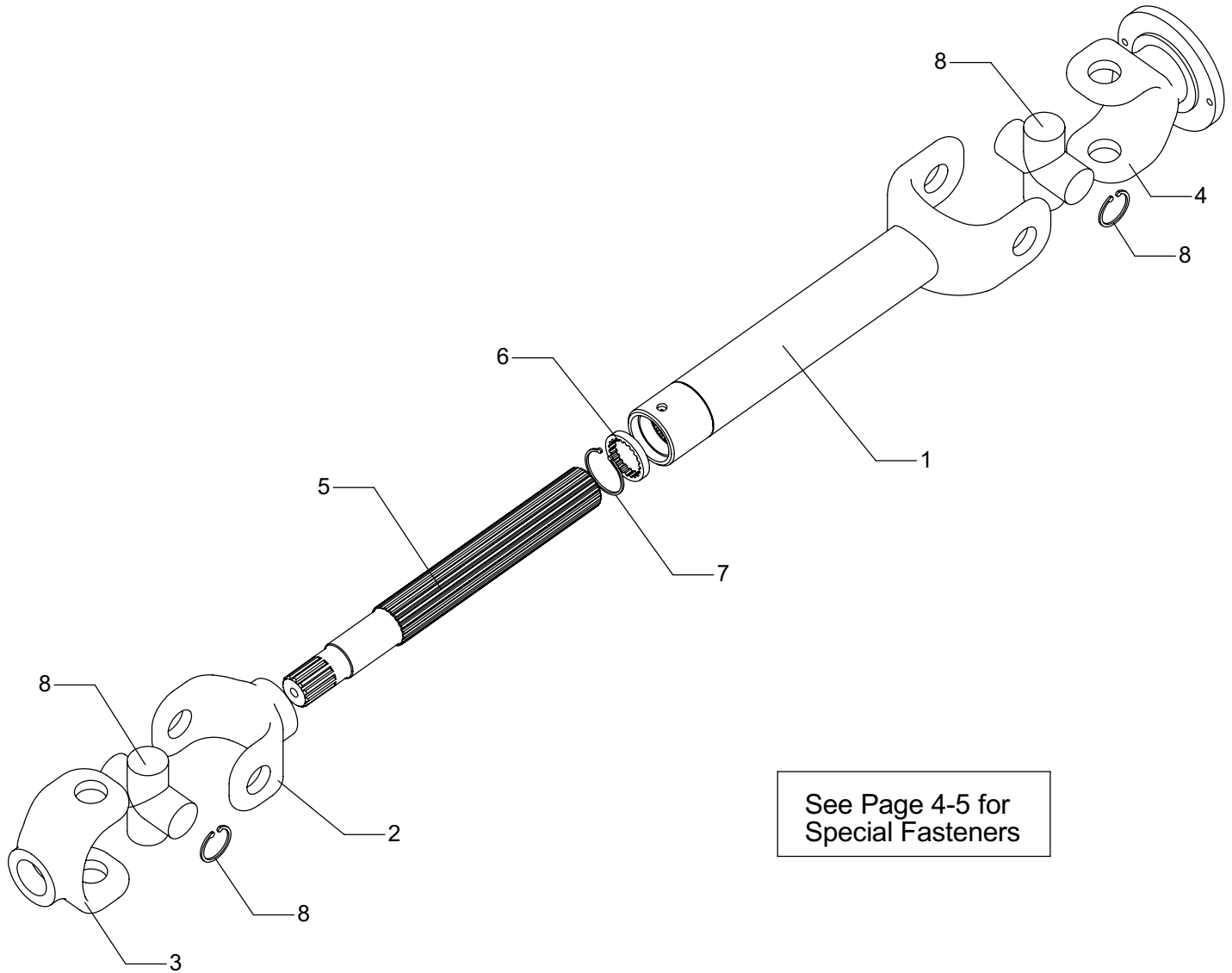


Outer View

1995	1996	1997	MODEL	REF.	PART NUMBER	PART NAME	QTY	DESCRIPTION
X	X	X		1	L25A-101472	PLATE ASSEMBLY, INNER LH	1	
X	X	X		2	L25A-101506	ARM ASSEMBLY, OUTER LH	1	
X	X	X		3	L25A-101528	PLATE, OUTER TRUNION MOUNT, LH	1	
X	X	X		4	L25A-101533	PIN, CYLINDER	1	
X	X	X		5	MFL25-101505	CAP, END	1	
X	X	X		6	MFL25-101466	BEARING, MAIN PIVOT	2	
X	X	X		7	MFL25-101467	BAR, GUSSET BOXING	2	
X	X	X		8	MFL25-101468	BUSHING, PIVOT	2	
X	X	X		9	MFL25-101469	SHIM, CAMBER	1	
X	X	X		10	MFL25-101503	BEARING, OUTER ARM	1	
X	X	X		11	MFL25-101504	RING, OUTER ARM RETAINER	1	
X	X	X		12	MFL25-101470	SUPPORT, CROSS	1	
X	X	X		13	MFL25-101471	TRUSS, AXLE	1	
X	X	X		A	F-DW-12T	WASHER, TAPERED DOWEL, 3/4"	16	

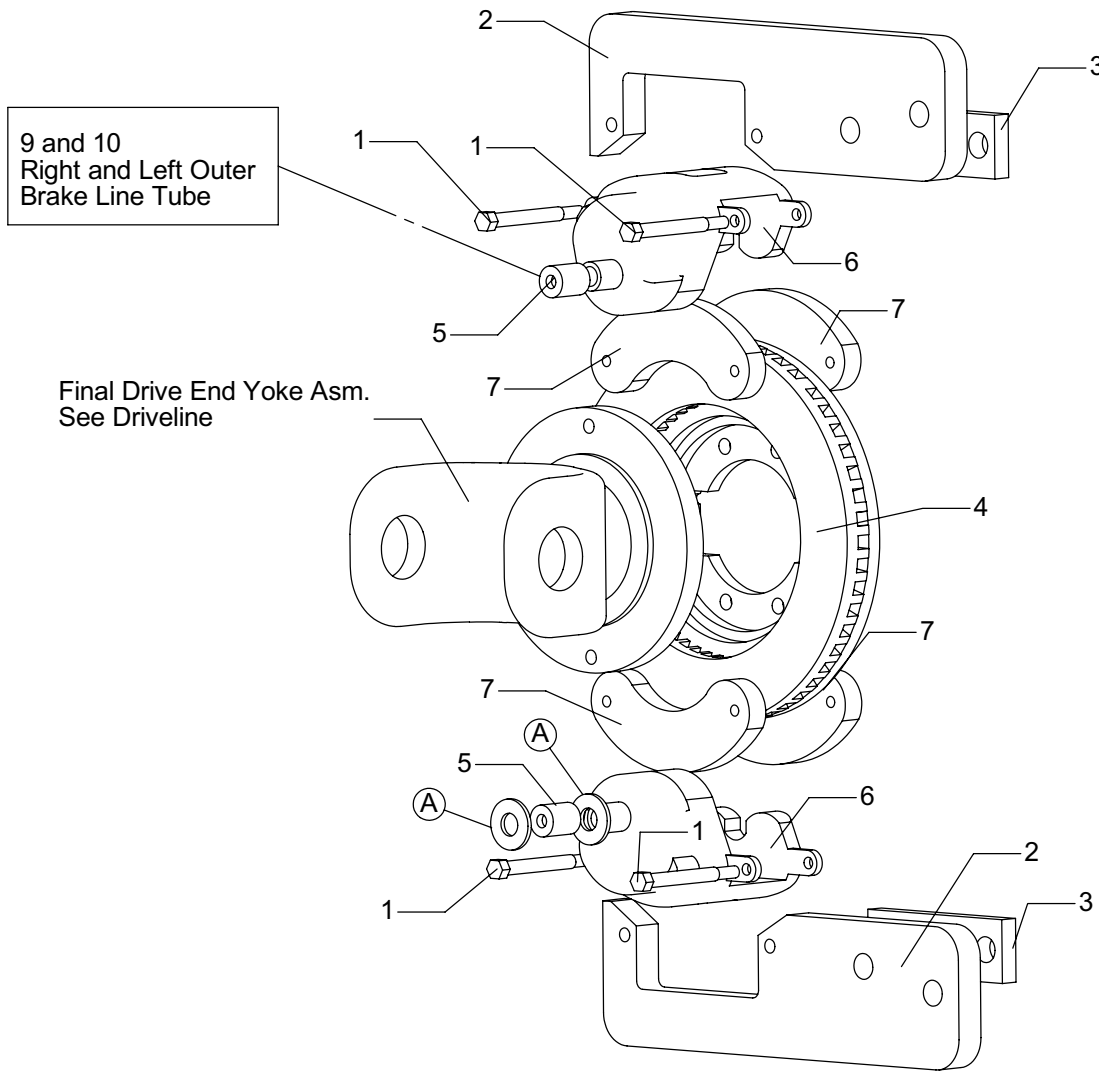


1995	1996	1997	MODEL	REF.	PART NUMBER	PART NAME	QTY	DESCRIPTION
X	X	X		1	L25A-101395	SUPPORT, FRAME LH	1	
X	X	X		2	L25A-101399	SUPPORT, FRAME RH	1	
X	X	NA		3	MFL25-101393	PLATE, FRAME SUPPORT BACKING	2	
NA	NA	X		4	MFL25-101394	PLATE, FRAME SUPPORT BACKING	2	
X	X	X		5	L25A-101405	STOP ASSEMBLY, REAR AXLE	1	
X	X	X		6	MFL25-101403	PIN, REAR AXLE STOP	2	
X	X	X		7	MFL25-101404	RING, REAR AXLE STOP	1	
X	X	X		8	MC-10095801	SPRING, COMPRESSION	1	



See Page 4-5 for
Special Fasteners

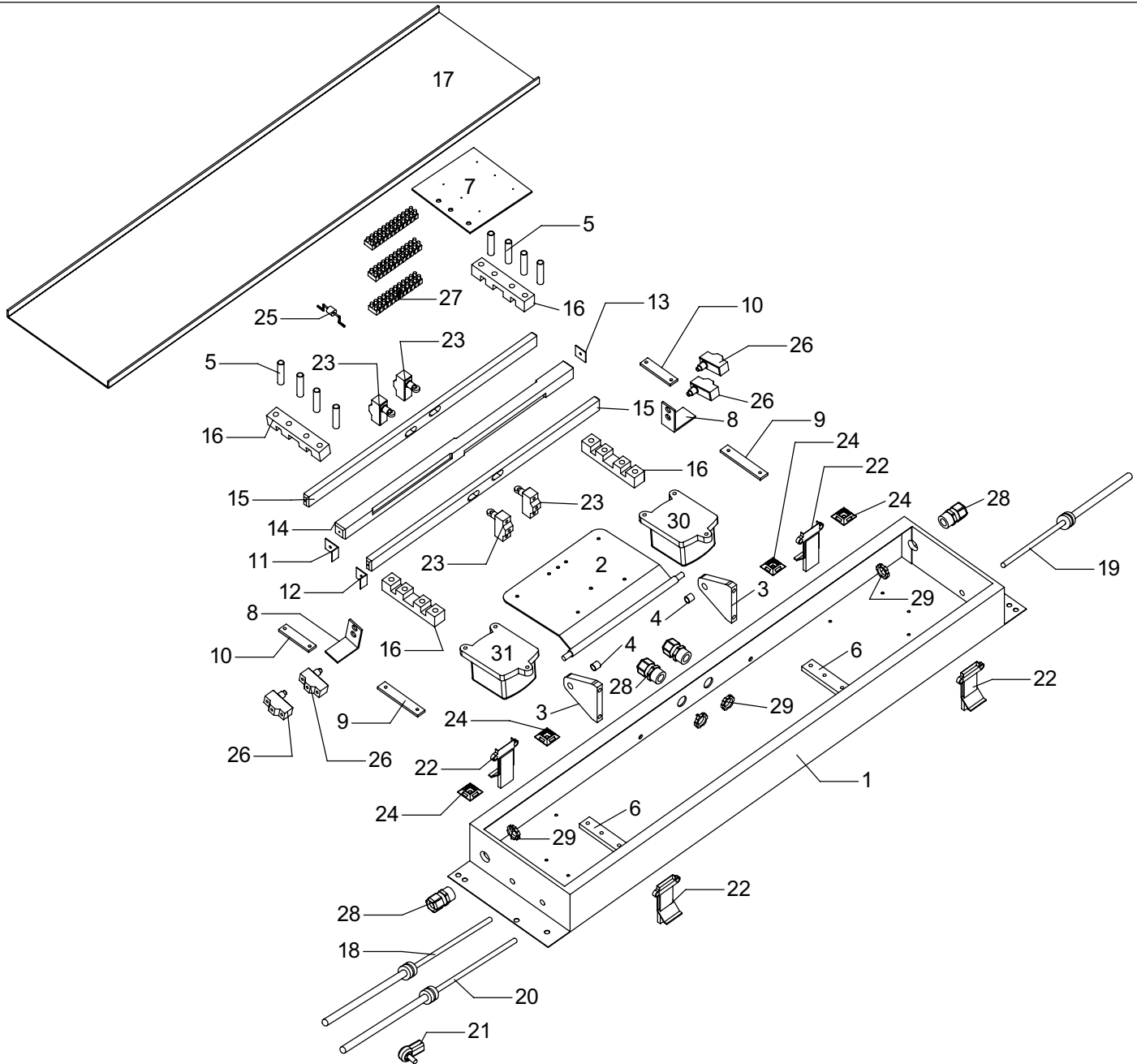
1995	1996	1997	MODEL	REF.	PART NUMBER	PART NAME	QTY	DESCRIPTION
X	X	X		1	L25A-101454	TUBE ASSEMBLY, DRIVELINE	2	
X	X	X		2	L25A-101461	YOKE, DRIVE SHAFT END	2	
X	X	X	1600	3	L25A-101465	YOKE, TRANSMISSION END	2	
X	X	X	2100	3	L25A-101466	YOKE, TRANSMISSION END	2	
X	X	X	1600	4	L25A-101467	YOKE ASSEMBLY, FINAL DRIVE END	2	
X	X	X	2100	4	L25A-101469	YOKE ASSEMBLY, FINAL DRIVE END	2	
X	X	X		5	MFL25-101459	SHAFT, DRIVE	2	
X	X	X		6	MFL25-101460	SEAL, WIPER	2	
X	X	X		7	F-SRI-52	RING, SLIP COLLAR SNAP RING	2	INTERNAL
X	X	X		8	MC-10033401	KIT, U-JOINT	4	



1995	1996	1997	MODEL	REF.	PART NUMBER	PART NAME	QTY	DESCRIPTION
X	X	X		1	L25A-101543	BOLT, CALIPER MOUNTING	8	
X	X	X		2	MFL25-101538	MOUNT, BRAKE	4	
X	X	X		3	MFL25-101539	SPACER, BRAKE MOUNT	4	
X	X	X		4	MFL25-101680	ROTOR, BRAKE	2	
X	X	X		5	MFL25-101542	BUSHING, CALIPER INPUT	4	
X	X	X		6	MC-10020401	CALIPER, BRAKE	2	RIGHT HAND
X	X	X		NS	MC-10020301	CALIPER, BRAKE	2	LEFT HAND
X	X	X		7	MC-10018201	PADS, BRAKE SET	2	
X	X	X		8	MC-10020701	PLUG, BRAKE LINE EXPANSION	2	
X	X	X		9	MFL25-101540	TUBE, OUTER BRAKE LINE	1	RIGHT HAND
X	X	X		10	MFL25-101541	TUBE, OUTER BRAKE LINE	1	LEFT HAND
FASTENERS								
NA	X	X	2100	NS	F-HC-20M120Z	BOLT, HEX HEAD, METRIC, 8.8 20 x 2.5 x 120MM	8	FINAL MOUNT AND BRAKE MOUNT
NA	X	X	2100	NS	F-HC-20M90Z	BOLT, HEX HEAD, METRIC, 8.8 20 x 2.5 x 90MM	12	FINAL MOUNT
NA	X	X	2100	NS	F-SHC-20M60Z	BOLT, SOCKET HEAD, METRIC, 8.8 20 x 2.5 x 60	4	FINAL MOUNT, UNDER ROTOR
NA	X	X	2100	NS	F-LW-20MZ	WASHER, LOCK, METRIC, 20MM	24	FINAL MOUNT
X	X	X	1600	NS	F-HC8-12C80	BOLT, HEX HEAD, GRADE 8, 3/4-10 x 5	8	FINAL MOUNT AND BRAKE MOUNT
X	X	X	1600	NS	F-HC8-12C56	BOLT, HEX HEAD, GRADE 8, 3/4-10 x 3-1/2	12	FINAL MOUNT
X	X	X	1600	NS	F-SHC-12C40	BOLT, SOCKET HEAD, 3/4-10 x 2-1/2	4	FINAL MOUNT, UNDER ROTOR
X	X	X	1600	NS	F-LWH-12	WASHER, LOCK, HEAVY, 3/4	24	FINAL MOUNT
X	X	X		NS	MFL25-102655	CALIPER INPUT	4	
X	X	X		NS	MFL25-102644	BOLT, HEX HEAD, GRADE 8, 5/8-18 x 2, CROSS DRILLED HEAD	2	FINAL DRIVE END YOKE
X	X	X	1600	NS	MFL25-102645	BOLT, HEX HEAD, GRADE 8, 7/8-9 x 3, CROSS DRILLED HEAD	2	TRANSMISSION END YOKE
NA	X	X	2100	NS	MFL25-102646	BOLT, HEX HEAD, GRADE 8, 7/8-9 x 2-1/2, CROSS DRILLED HEAD	2	TRANSMISSION END YOKE
X	X	X		A	MC-10311601	WASHER, COPPER	2	BRAKE CALIPER

Electrical Control Box

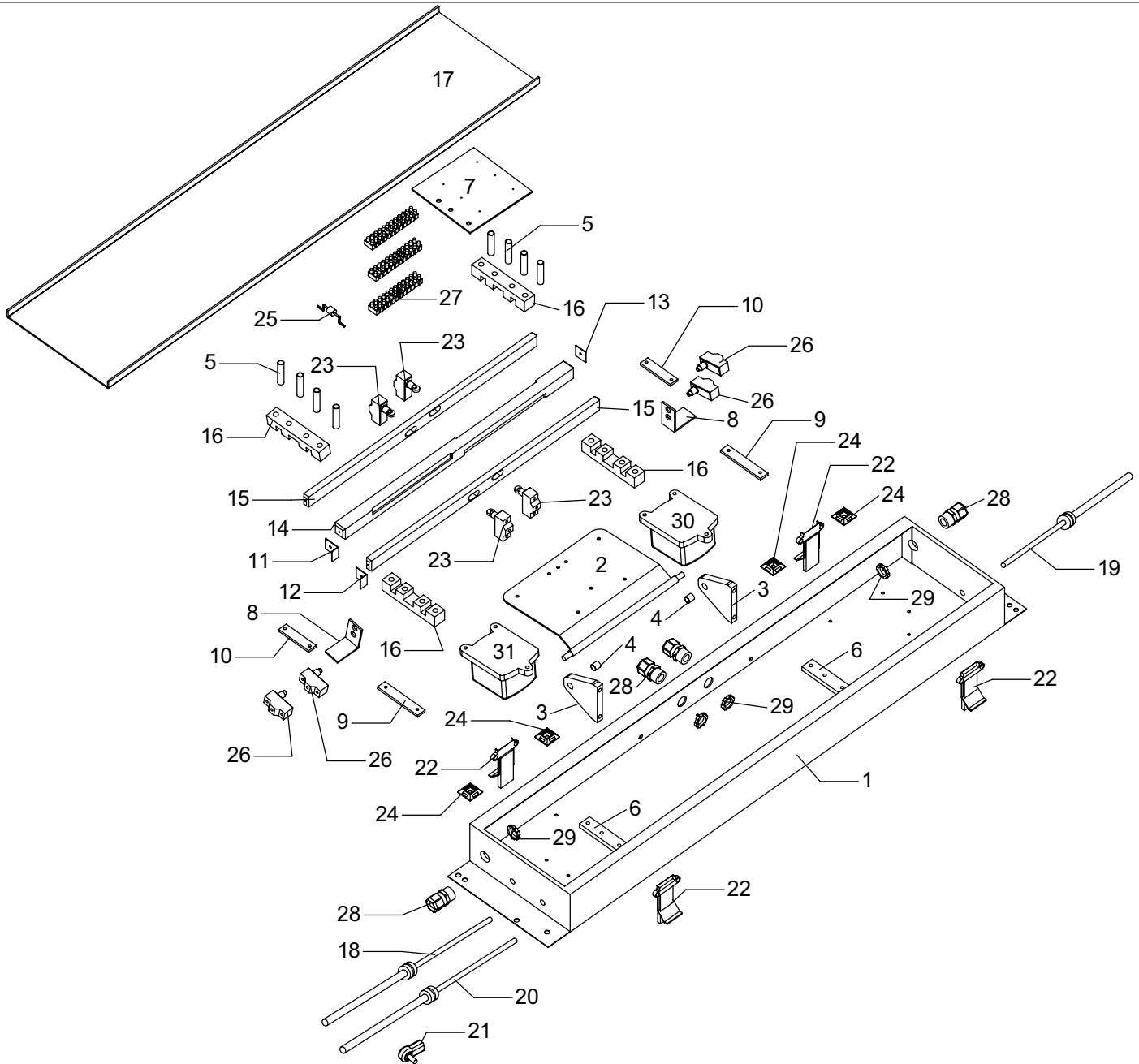
Hillco Model 250 Leveling System



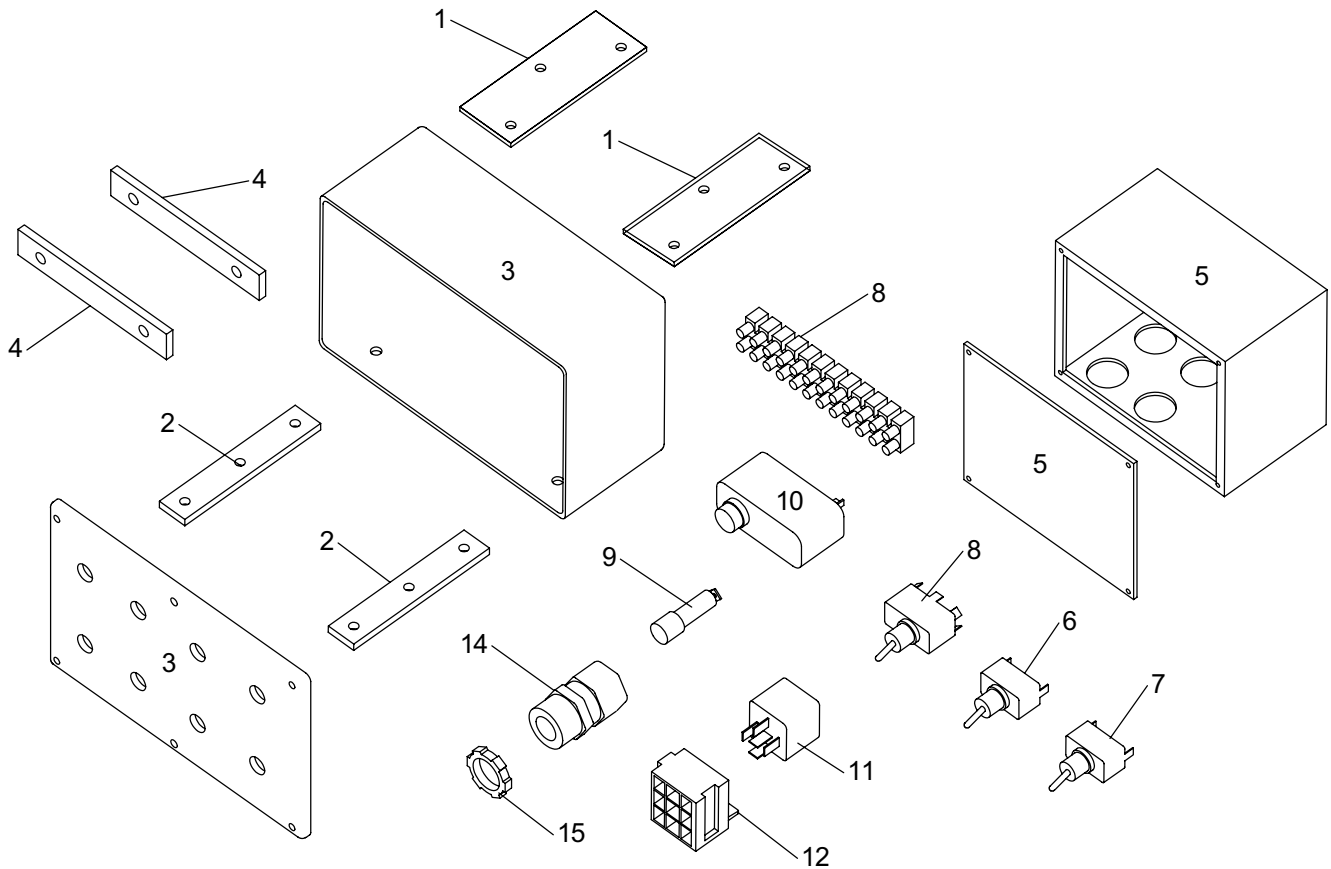
1995	1996	1997	MODEL	REF.	PART NUMBER	PART NAME	QTY	DESCRIPTION
X	X	X		1	L25A-101373	BOX, AUTO CONTROL	1	
X	X	X		2	L25A-100831	PLATE ASSEMBLY, LEVELING CONTROLLER SWING	1	
X	X	X		3	MFL25-101378	MOUNT, LEVELING CONTROLLER	2	
X	X	X		4	MC-10005101	BUSHING, LEVELING CONTROLLER PIVOT	2	
X	X	X		5	MFL25-101358	TUBE, CONTROL ROD SPACER	8	
X	X	X		6	MFL25-101359	SPACER, CONTROL BOX MOUNT	2	
X	X	X		7	MFL25-101360	PLATE, TERMINAL STRIP MOUNT	1	
X	X	X		8	MFL25-101361	MOUNT, LIMIT SWITCH	2	
X	X	X		9	MFL25-101362	HOLD DOWN, CABLE	2	
X	X	X		10	MFL25-101363	HOLD DOWN, LIMIT SWITCH	2	
X	X	X		11	MFL25-101366	ANGLE, LIMIT SWITCH ACTUATOR, LONG	1	
X	X	X		12	MFL25-101367	ANGLE, LIMIT SWITCH ACTUATOR, SHORT	1	
X	X	X		13	MFL25-101368	SQUARE, LIMIT SWITCH ACTUATOR	2	
X	X	X		14	MFL25-101369	ROD, CONTROL MIDDLE	1	
X	X	X		15	MFL25-101370	ROD, CONTROL OUTER	2	
X	X	X		16	MFL25-101371	BEARING, CONTROL ROD	4	
X	X	X		17	MFL25-101372	LID, AUTO CONTROL BOX	1	

Electrical Control Box

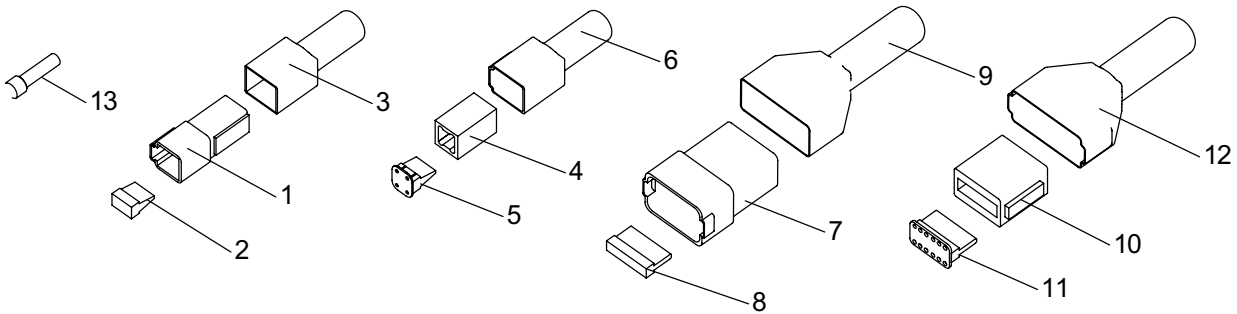
Hillco Model 250 Leveling System



1995	1996	1997	MODEL	REF.	PART NUMBER	PART NAME	QTY	DESCRIPTION
X	X	X		18	MC-10019801	CABLE, CONTROL	1	HEADER TRIM
X	X	X		19	MC-10019901	CABLE, CONTROL	1	SWING ARM LH
X	X	X		20	MC-10019701	CABLE, CONTROL	1	SWING ARM RH
X	X	X		21	F-RES-#10F	ROD END, SPHERICAL	3	#10-32
X	X	X		22	MC-10018901	LATCH, TENSION	4	
X	X	X		23	EC-10017901	SWITCH, ROLLER PLUNGER	4	ON/ON SINGLE POLE
X	X	X		24	EC-10002101	HOLD DOWN, WIRE TIE	4	ADHESIVE BACK, SCREW CENTER
X	X	X		25	EC-10000401	RECTIFIER	10	6 AMP, 50 VOLT
X	X	X		26	EC-10018001	SWITCH, STRAIGHT PLUNGER	4	ON/ON SINGLE POLE
X	X	X		27	EC-10001201	STRIP, TERMINAL, 12 POSITION	3	
X	X	X		28	EC-10018601	RELIEF, STRAIN, 1/2 IN.	4	
X	X	X		29	EC-10018701	NUT, LOCK, STRAIN RELIEF, 1/2 IN.	4	
X	X	X		30	EC-10000201	CONTROLLER, LEVELING	1	LOW SPEED
X	X	X		31	EC-10000301	CONTROLLER, LEVELING	1	HIGH SPEED
X	X	X	NS		HC-10035801	GASKET	..	LEVELING CONTROLLER
X	X	X	NS		HC-10035701	REFILL, SILICONE FLUID	..	LEVELING CONTROLLER



1995	1996	1997	MODEL	REF.	PART NUMBER	PART NAME	QTY	DESCRIPTION
NA	NA	X		1	MFL25-101354	PLATE, CONSOLE MOUNTING TOP	2	
NA	NA	X		2	MFL25-101355	PLATE, CONSOLE MOUNTING BOTTOM	2	
X	X	X		3	MFL25-101614	PANEL, OPERATOR CONTROL	1	
X	X	NA		4	MFL25-101356	MOUNT, OPERATOR CONTROL	2	
X	X	X		5	MFL25-101379	BOX, JUNCTION	1	
X	X	X		6	EC-10017801	SWITCH, TOGGLE (AUTO-MAN LEVEL, HEIGHT, TRIM)	3	SINGLE POLE, ON/OFF
X	X	X		7	EC-10017701	SWITCH, TOGGLE (HEADER UP/DOWN)	1	SINGLE POLE, MO/OFF/MO
X	X	X	1600	7	EC-10017701	SWITCH, TOGGLE (TRIM L/R)	1	SINGLE POLE, MO/OFF/MO
X	X	X		8	EC-10017601	SWITCH, TOGGLE (MANUAL L/R)	1	DOUBLE POLE, MO/OFF/MO
X	X	X		9	EC-10017501	HOLDER, FUSE	1	
X	X	X		10	EC-10018401	LIGHT/BUZZER, WARNING	1	
X	X	X		11	EC-10001001	RELAY, UNIVERSAL	2	
NA	X	X	2100	11	EC-10001001	RELAY, UNIVERSAL	2	
X	X	X		12	EC-10000901	BASE, RELAY, UNIVERSAL	2	
NA	X	X	2100	12	EC-10000901	BASE, RELAY, UNIVERSAL	2	
X	X	X		NS	EC-10000801	SPADE, RELAY, UNIVERSAL	8	
NA	X	X	2100	NS	EC-10000801	SPADE, RELAY, UNIVERSAL	8	
X	X	X		14	EC-10018601	RELIEF, STRAIN, 1/2 IN.	5	
X	X	X		15	EC-10018701	NUT, LOCK, STRAIN RELIEF, 1/2 IN.	5	



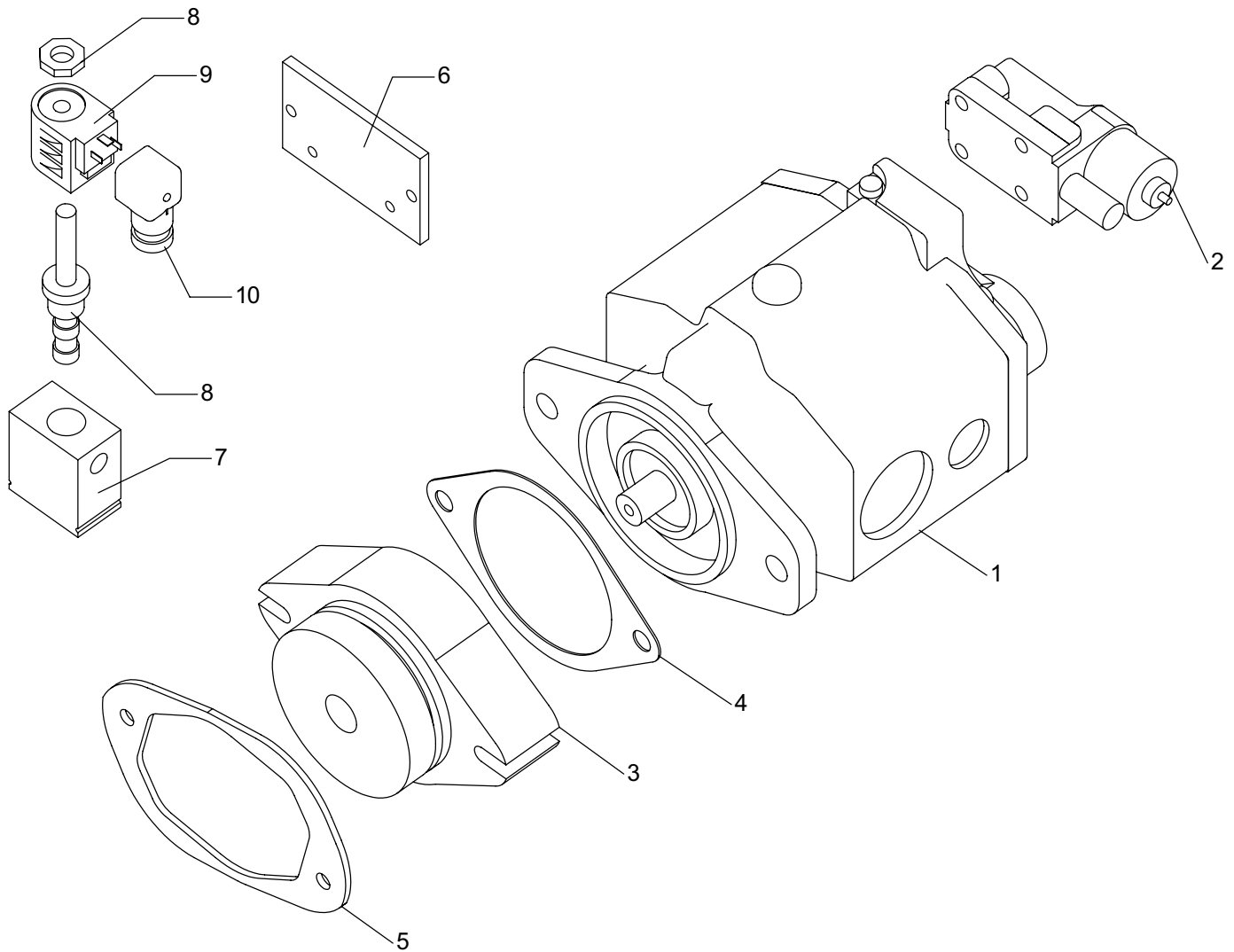
1995	1996	1997	MODEL	REF.	PART NUMBER	PART NAME	QTY	DESCRIPTION
X	X	X		1	EC-10015601	RECEPTACLE, 4 PIN	1	CABLE F
X	X	X		2	EC-10015801	WEDGE, RECEPTACLE, 4 PIN	1	CABLE F
X	X	X		3	EC-10095301	BOOT, RECEPTACLE, 4 PIN	1	CABLE F
X	X	X		4	EC-10015701	PLUG, 4 SOCKET	1	CABLE D
X	X	X		5	EC-10015901	WEDGE, PLUG, 4 SOCKET	1	CABLE D
X	X	X		6	EC-10095401	BOOT, PLUG, 4 PIN	1	CABLE D
X	X	X		7	EC-10016001	RECEPTACLE, 12 PIN	2	CABLES M & O
X	X	X		8	EC-10016201	WEDGE, RECEPTACLE, 12 PIN	2	CABLES M & O
X	X	X		9	EC-10016601	BOOT, RECEPTACLE, 12 PIN	2	CABLES M & O
X	X	X		10	EC-10016101	PLUG, 12 PIN	2	CABLES H & N
X	X	X		11	EC-10016301	WEDGE, PLUG, 12 PIN	2	CABLES H & N
X	X	X		12	EC-10016701	BOOT, PLUG, 12 PIN	2	CABLES H & N
X	X	X		NS	EC-10016501	SOCKET, MULTI-CONNECTOR	28	
X	X	X		NS	EC-10016401	PIN, MULTI-CONNECTOR	28	
X	X	X		13	EC-10062801	PLUG, SEALING	10	18 GA.

CABLES

1995	1996	1997	MODEL	REF.	PART NUMBER	PART NAME	QTY	DESCRIPTION
X	X	X		A	L25A-100831	HARNESS - A	1	AUTO HEIGHT SWITCH
X	X	X		B	L25A-100832	HARNESS - B	1	LEVEL LEFT LIMIT SWITCH
X	X	X		C	L25A-100833	HARNESS - C	1	LEVEL RIGHT LIMIT SWITCH
X	X	X		D	L25A-100834	HARNESS - D	1	LOAD SENSE OIL LEVEL
X	X	X		E	L25A-100835	HARNESS - E	1	AUTO TRIM SWITCH
X	X	X		F	L25A-100836	HARNESS - F	1	CONTROL BOX - LOAD SENSE OIL LEVEL
X	X	X		G	L25A-100837	HARNESS - G	1	LOAD SENSE
X	X	X		H	L25A-100838	HARNESS - H	1	JUNCTION BOX
X	X	X		I	L25A-100839	HARNESS - I	1	VALVE BANK #1
X	X	X		J	L25A-100840	HARNESS - J	1	VALVE BANK #2
X	X	X		K	L25A-100841	HARNESS - K	1	VALVE BANK #3
X	X	X		L	L25A-100842	HARNESS - L	1	VALVE BANK #4
X	X	X		M	L25A-100843	HARNESS - M	1	CONTROL BOX - JUNCTION BOX
X	X	X		N	L25A-100844	HARNESS - N	1	CONSOLE
X	X	X		O	L25A-100845	HARNESS - O	1	CONTROL BOX - CONSOLE
X	X	X	2100	P	L25A-100846	HARNESS - P	1	SECONDARY CONSOLE

Pump Drive Components

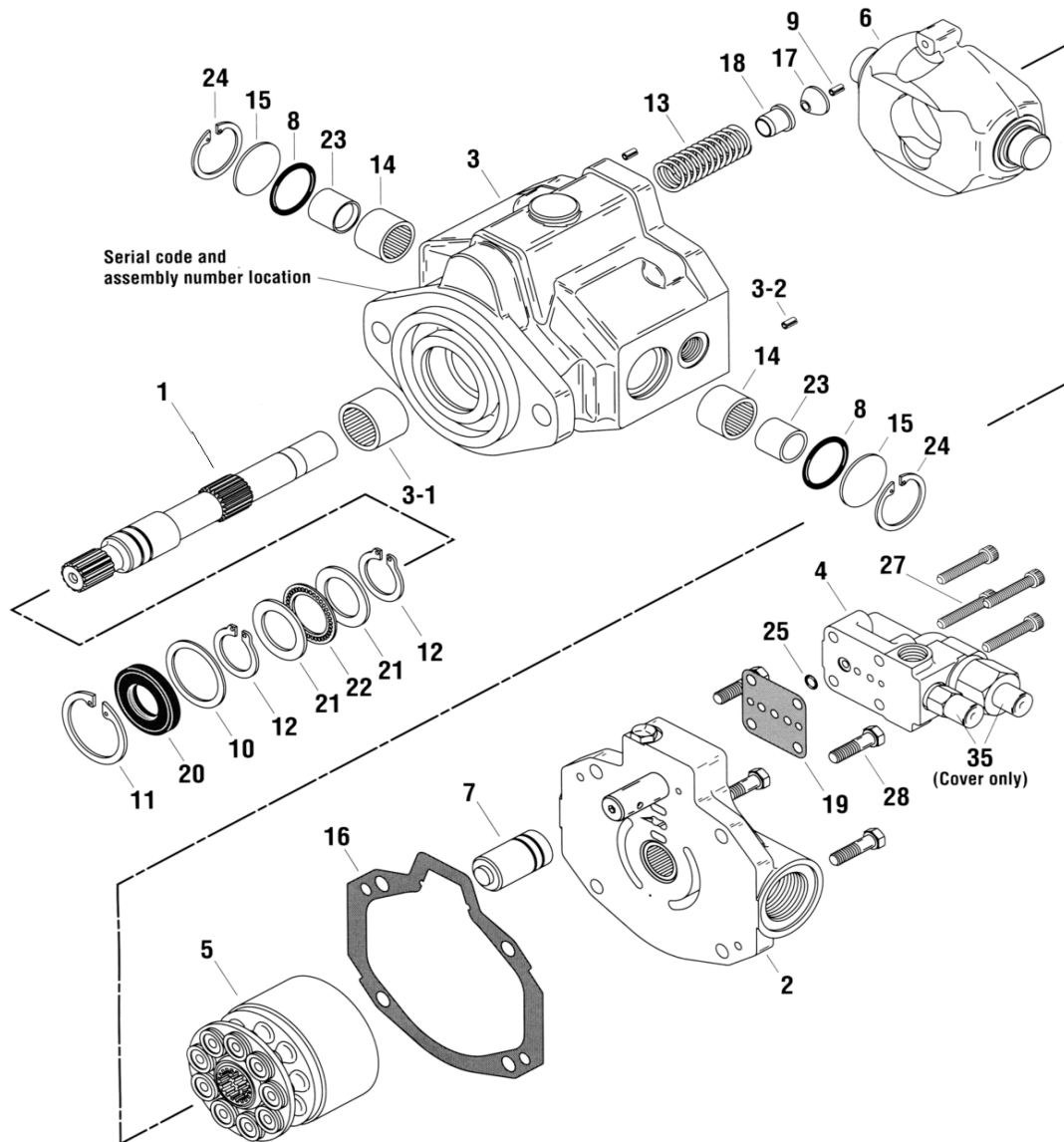
Hillco Model 250 Leveling System



1995	1996	1997	MODEL	REF.	PART NUMBER	PART NAME	QTY	DESCRIPTION
X	X	X		1	HC-10096201	PUMP, HYDRAULIC	1	SEE PAGES 6-2 AND 6-3
X	X	X		2	HC-10205901	COMPENSATOR, PRESSURE FLOW	1	SEE PAGE 6-4
X	X	X		3	HC-10071201	ADAPTER, PUMP DRIVE	1	
X	X	X		4	HC-10071401	GASKET, PUMP DRIVE, FIBER	1	
X	X	X		5	HC-10071301	GASKET, PUMP DRIVE, STEEL	1	
NA	NA	X		6	MFL25-101391	MOUNT, LOAD SENSE VALVE	1	
X	X	X		..	HC-10033901	VALVE, LOAD SENSE, COMPLETE	1	
X	X	X		7	HC-10098601	BODY, LOAD SENSE VALVE	1	
X	X	X		8	HC-10101501	CARTRIDGE, LOAD SENSE VALVE	1	
X	X	X		9	HC-10034001	COIL, LOAD SENSE VALVE WITH NUT	1	
X	X	X		10	EC-10098701	PLUG, DIN, 3 PRONG	1	
X	X	X		NS	HC-10033701	KIT, SEAL	..	

Pump Assembly

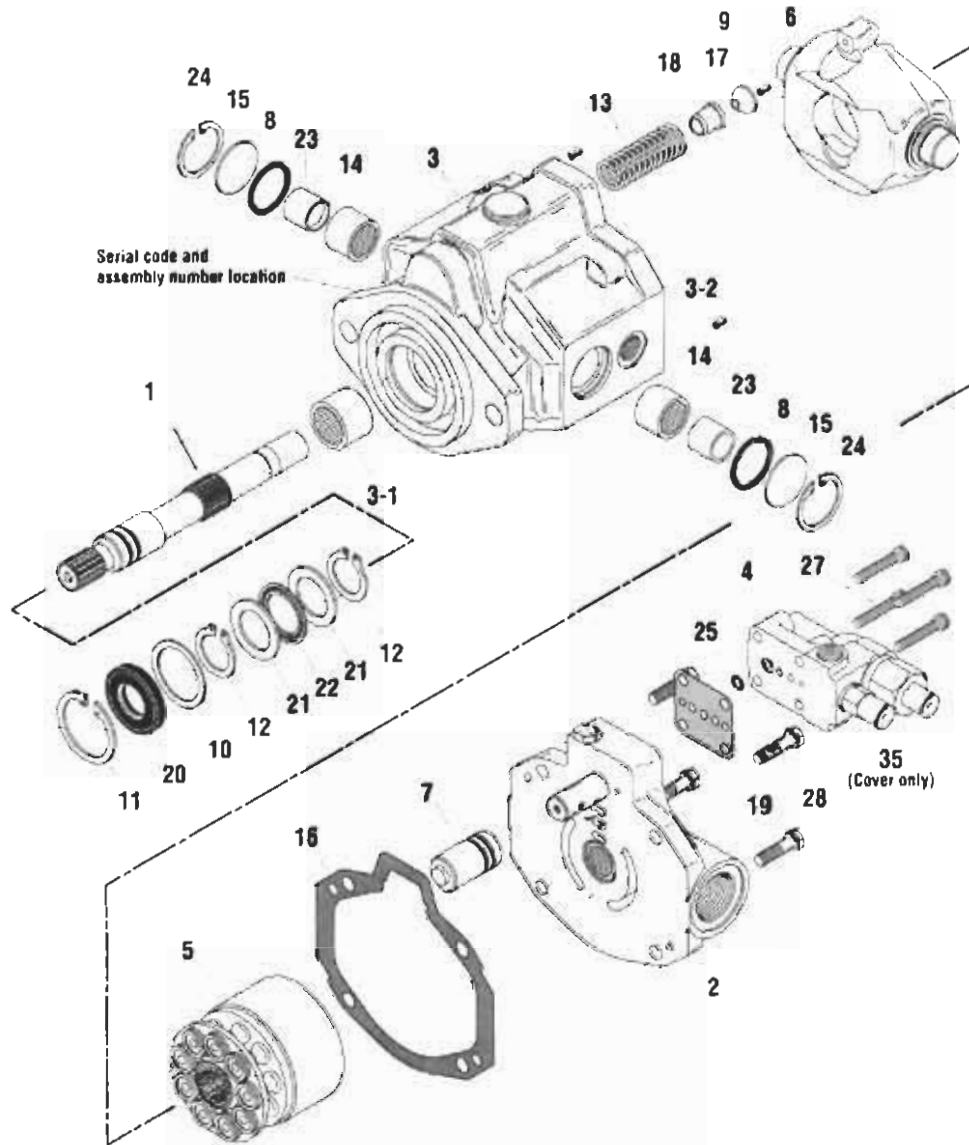
Hillco Model 250 Leveling System



1995	1996	1997	MODEL	REF.	PART NUMBER	PART NAME	QTY	DESCRIPTION
X	X	X		NS	HC-10206701	KIT, SEAL, PUMP AND COMPENSATOR	..	
X	X	X		..	HC-10096201	PUMP, HYDRAULIC	1	
X	X	X		1	HC-10295701	SHAFT, DRIVE	1	
X	X	X		2	HC-10298101	BACKPLATE ASSEMBLY	1	
X	X	X		3	HC-10295801	HOUSING ASSEMBLY	1	
X	X	X		3-1	HC-10297101	BEARING	1	
X	X	X		3-2	HC-10297201	ROLL PIN	2	
X	X	X		4	HC-10205901	COMPENSATOR ASM, FLOW CONTROL	1	SEE PAGE 6-4
X	X	X		5	HC-10297701	KIT, ROTATING ASSEMBLY	1	
X	X	X		6	HC-10296701	CAMPLATE	1	
X	X	X		7	HC-10297801	PISTON, CONTROL	1	
X	X	X		8	HC-10034201	O-RING, 3/32 X 1-7/16 I.D.	2	INCLUDED IN SEAL KIT (HC-10206701)
X	X	X		9	HC-10296601	PIN, ROLL	1	
X	X	X		10	HC-10295201	WASHER	1	
X	X	X		11	HC-10295101	RING, RETAINING	1	INCLUDED IN SEAL KIT (HC-10206701)
X	X	X		12	HC-10295301	RING, RETAINING	2	INCLUDED IN SEAL KIT (HC-10206701)
X	X	X		13	HC-10296301	SPRING, CAMPLATE CONTROL	1	
X	X	X		14	HC-10295901	BEARING, NEEDLE	2	
X	X	X		15	HC-10296101	COVER, TRUNION	2	
X	X	X		16	HC-10297901	GASKET	1	INCLUDED IN SEAL KIT (HC-10206701)
X	X	X		17	HC-10296501	BUTTON, PIVOT	1	
X	X	X		18	HC-10296401	COLLAR, SPRING	1	

Pump Assembly

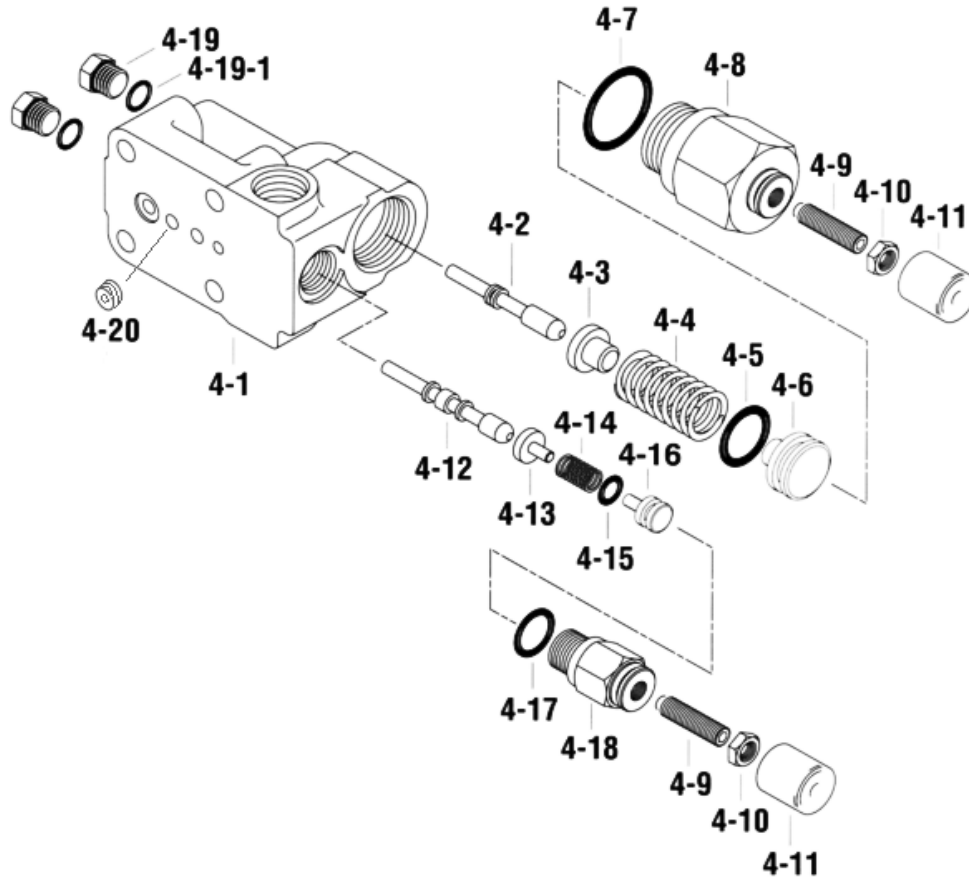
Hillco Model 250 Leveling System



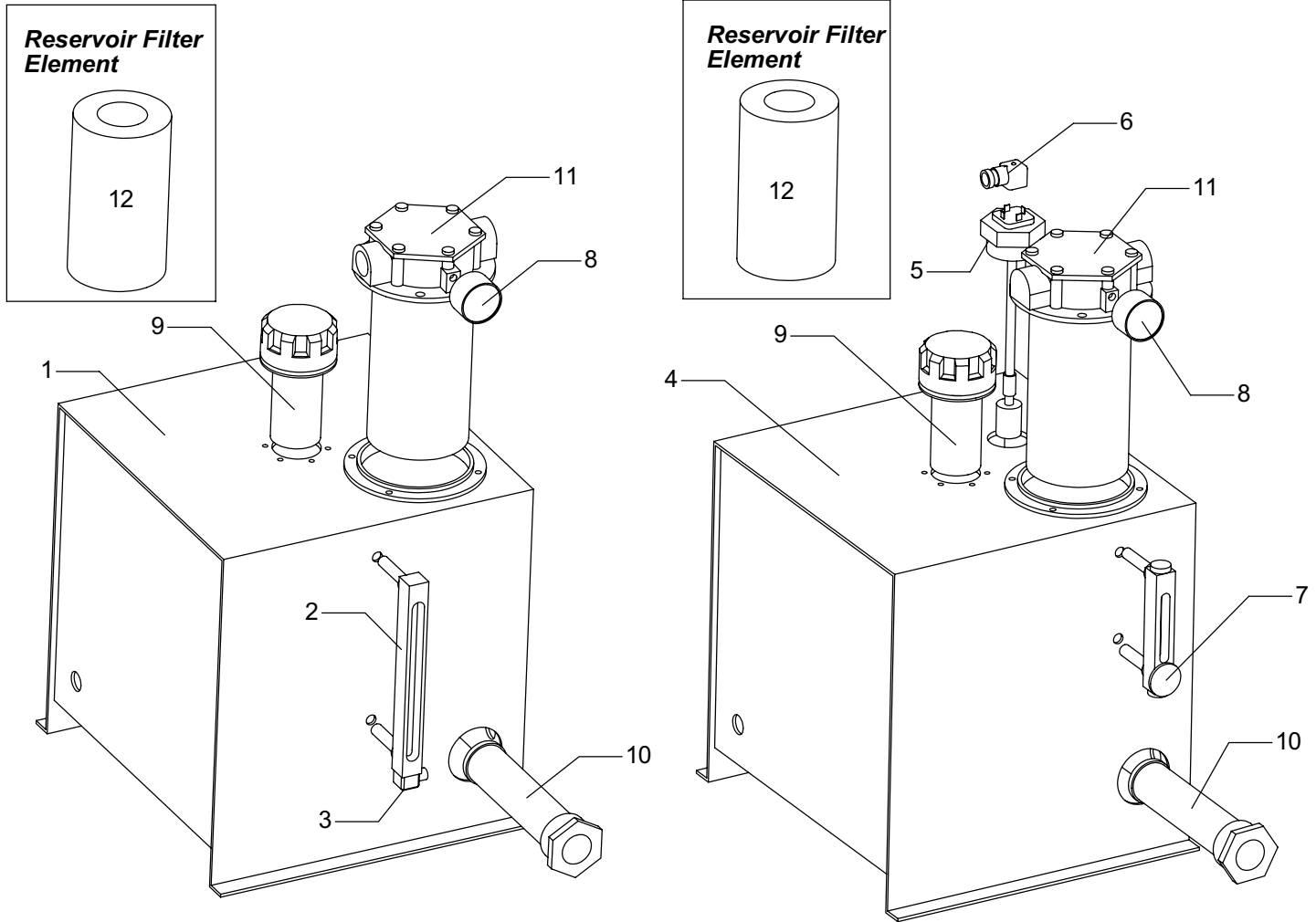
1995	1996	1997	MODEL REF.	PART NUMBER	PART NAME	QTY	DESCRIPTION
X	X	X	19	HC-10239901	GASKET, COMPENSATOR	1	INCLUDED IN SEAL KIT (HC-10206701)
X	X	X	20	HC-10034101	SEAL, SHAFT	1	
			20	HC-10302301	SEAL, VITON SHAFT	1	PREMIUM
X	X	X	21	HC-10295401	WASHER, THRUST	2	
X	X	X	22	HC-10295501	BEARING, THRUST	1	
X	X	X	23	HC-10296001	RACE, INNER	2	
X	X	X	24	HC-10296201	RING, RETAINING	2	INCLUDED IN SEAL KIT (HC-10206701)
X	X	X	25	HC-10298301	O-RING, 1/16 X 1/4 I.D.	1	INCLUDED IN SEAL KIT (HC-10206701)
X	X	X	27	HC-10298401	SCREW, ALLEN HEAD CAP	4	
X	X	X	28	HC-10298201	SCREW, CAP	4	
X	X	X	33	HC-10296801	CAP SCREW, COVER PLATE	2	
X	X	X	NS	HC-10296901	O-RING, 1/16 X 19/64 ID	1	INCLUDED IN SEAL KIT (HC-10206701)
X	X	X	35	HC-10297001	COVER	2	
FASTENERS							
X	X	X	NS	F-STD-12M90U	STUD, METRIC, D _E 12 X 1.75 X 90	2	PUMP DRIVE MOUNTING BOLT
X	X	X	NS	F-IN-12MZ	NUT, HEX, METRIC, 12 X 1.75	2	PUMP DRIVE MOUNTING NUT
X	X	X	NS	F-LW-12MZ	WASHER, LOCK, METRIC, 12	2	PUMP DRIVE MOUNTING LOCK WASHER

Compensator Assembly

Hillco Model 250 Leveling System



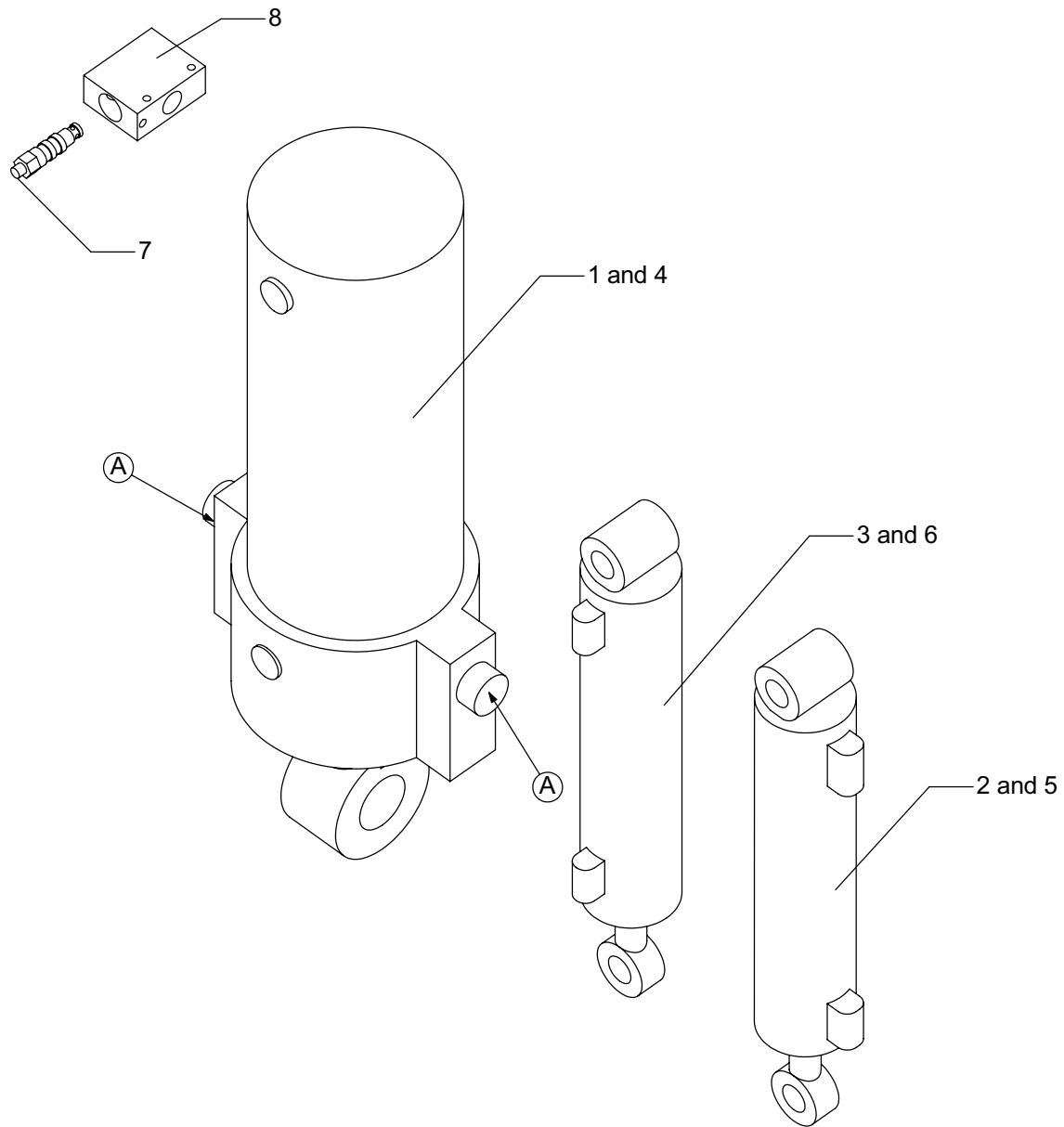
1995	1996	1997	MODEL	REF.	PART NUMBER	PART NAME	QTY	DESCRIPTION
X	X	X		NS	HC-10206701	KIT, SEAL, PUMP AND COMPENSATOR	..	
X	X	X		..	HC-10205901	COMPENSATOR ASM, FLOW CONTROL	1	
X	X	X		4-1	NSS	HOUSING, COMPENSATOR	1	
X	X	X		4-2	NSS	SPOOL, PRESSURE COMPENSATOR	1	
X	X	X		4-3	HC-10298801	CAP, SPRING PIVOT	1	
X	X	X		4-4	HC-10208101	SPRING, PRESSURE COMPENSATOR	1	
X	X	X		4-5	HC-10231801	O-RING, 3/32 X 9/16	1	INCLUDED IN SEAL KIT (HC-10206701)
X	X	X		4-6	HC-10298901	FOLLOWER, SPRING, PRESSURE	1	
X	X	X		4-7	HC-10231901	O-RING, 3/32 X 7/8 I.D.	1	INCLUDED IN SEAL KIT (HC-10206701)
X	X	X		4-8	HC-10299001	CAP, ADJUSTMENT, PRESSURE	1	
X	X	X		4-9	HC-10299101	SCREW, SET	2	
X	X	X		4-10	HC-10299201	NUT, HEX	2	
X	X	X		4-11	HC-10297601	COVER	2	
X	X	X		4-12	NSS	SPOOL, FLOW COMPENSATOR	1	
X	X	X		4-13	HC-10299301	PIVOT, SPRING	1	
X	X	X		4-14	HC-10299401	SPRING, FLOW COMPENSATOR	1	
X	X	X		4-15	HC-10208301	O-RING, 1/16 X 7/32 ID	1	INCLUDED IN SEAL KIT (HC-10206701)
X	X	X		4-16	HC-10299501	FOLLOWER, SPRING, FLOW	1	
X	X	X		4-17	HC-10232001	O-RING, 5/64 X 15/32 I.D.	1	INCLUDED IN SEAL KIT (HC-10206701)
X	X	X		4-18	HC-10299601	CAP, ADJUSTMENT, PRESSURE	1	
X	X	X		4-19	HC-10298501	PLUG	2	
X	X	X		4-19-1	HC-10232101	O-RING, 1/16 X 19/64 I.D.	2	INCLUDED IN SEAL KIT (HC-10206701)
X	X	X		4-20	HC-10298701	OROFICE	1	



95-96 Reservoir

97 Reservoir

1995	1996	1997	MODEL	REF.	PART NUMBER	PART NAME	QTY	DESCRIPTION
X	X	NA		1	L25A-101381	RESERVOIR ASSEMBLY	1	
X	X	NA		2	HC-10099301	GAUGE, SIGHT W/ OIL LEVEL SWITCH	1	
X	X	NA		3	EC-10099401	DIN PLUG, SIGHT GAUGE W/ OIL LEVEL SWITCH	1	
NA	NA	X		4	L25A-101382	RESERVOIR ASSEMBLY	1	
NA	NA	X		5	HC-10099501	UNIT, OIL LEVEL SENDING	1	
NA	NA	X		6	HC-10099601	DIN PLUG, OIL LEVEL SENDING UNIT, 4 PRONG	1	
NA	NA	X		7	HC-10099201	GAUGE, SIGHT	1	
X	X	X		8	HC-10098801	INDICATOR, HYDRAULIC FILTER	1	
X	X	X		9	HC-10098901	BREATHER, FILLER	1	
X	X	X		10	HC-10099001	STRAINER, TANK	1	
X	X	X		11	HC-10099101	HEAD, RESERVOIR FILTER	1	
X	X	X		12	HC-10034301	ELEMENT, RESERVOIR FILTER	1	



1995	1996	1997	MODEL	REF.	PART NUMBER	PART NAME	QTY	DESCRIPTION
X	NA	NA		1	HC-10099901	CYLINDER, LEVELING	2	6" BORE, 3" ROD, 20" STROKE, TRUNION
X	NA	NA		NS	L25A-101000	KIT, SEAL	..	6" BORE, 3" ROD, 20" STROKE, TRUNION
X	NA	NA		2	HC-10100501	CYLINDER, HEADER TRIM MASTER	1	2.5" BORE, 1.125" ROD, 12" STROKE, 90° PORTS
X	NA	NA		NS	L25A-101006	KIT, SEAL	..	2.5" BORE, 1.125" ROD, 12" STROKE, 90° PORTS
X	NA	NA		3	HC-10101101	CYLINDER, HEADER TRIM SLAVE	1	2.5" BORE, 1.125" ROD, 12" STROKE, IN LINE PORTS
X	NA	NA		NS	L25A-101006	KIT, SEAL	..	2.5" BORE, 1.125" ROD, 12" STROKE, IN LINE PORTS
NA	X	X		4	HC-10100101	CYLINDER, LEVELING	2	6" BORE, 3" ROD, 20" STROKE, TRUNION
NA	X	X		NS	L25A-101002	KIT, SEAL	..	6" BORE, 3" ROD, 20" STROKE, TRUNION
NA	X	X		5	HC-10100701	CYLINDER, HEADER TRIM MASTER	1	2.5" BORE, 1.125" ROD, 12" STROKE, 90° PORTS
NA	X	X		NS	L25A-101008	KIT, SEAL	..	2.5" BORE, 1.125" ROD, 12" STROKE, 90° PORTS
NA	X	X		6	HC-10101301	CYLINDER, HEADER TRIM SLAVE	1	2.5" BORE, 1.125" ROD, 12" STROKE, IN LINE PORTS
NA	X	X		NS	L25A-101008	KIT, SEAL	..	2.5" BORE, 1.125" ROD, 12" STROKE, IN LINE PORTS
X	X	X		NS	F-SRE-20	RING, SNAP	1	1.25", EXTERNAL
X	X	X		7	HC-10096301	CARTRIDGE, CHECK VALVE	1	PILOT OPERATED CHECK VALVE
X	X	X		8	HC-10098401	BODY, CHECK VALVE	1	PILOT OPERATED CHECK VALVE
X	X	X		NS	HC-10114701	KIT, SEAL	..	PILOT OPERATED CHECK VALVE
X	X	X		A	F-PD-08X32	TRUNION DOWEL PIN	8	1/2 x 2

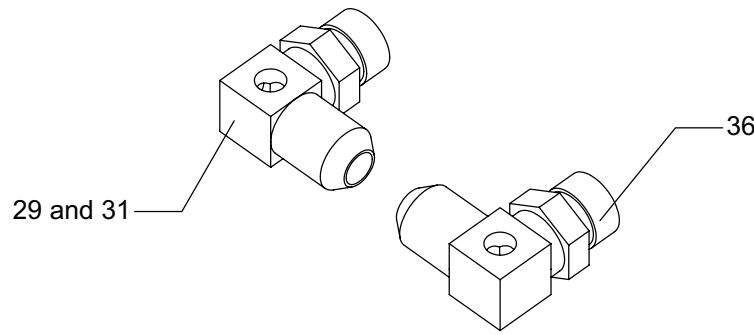
Hydraulic Hoses

Hillco Model 250 Leveling System

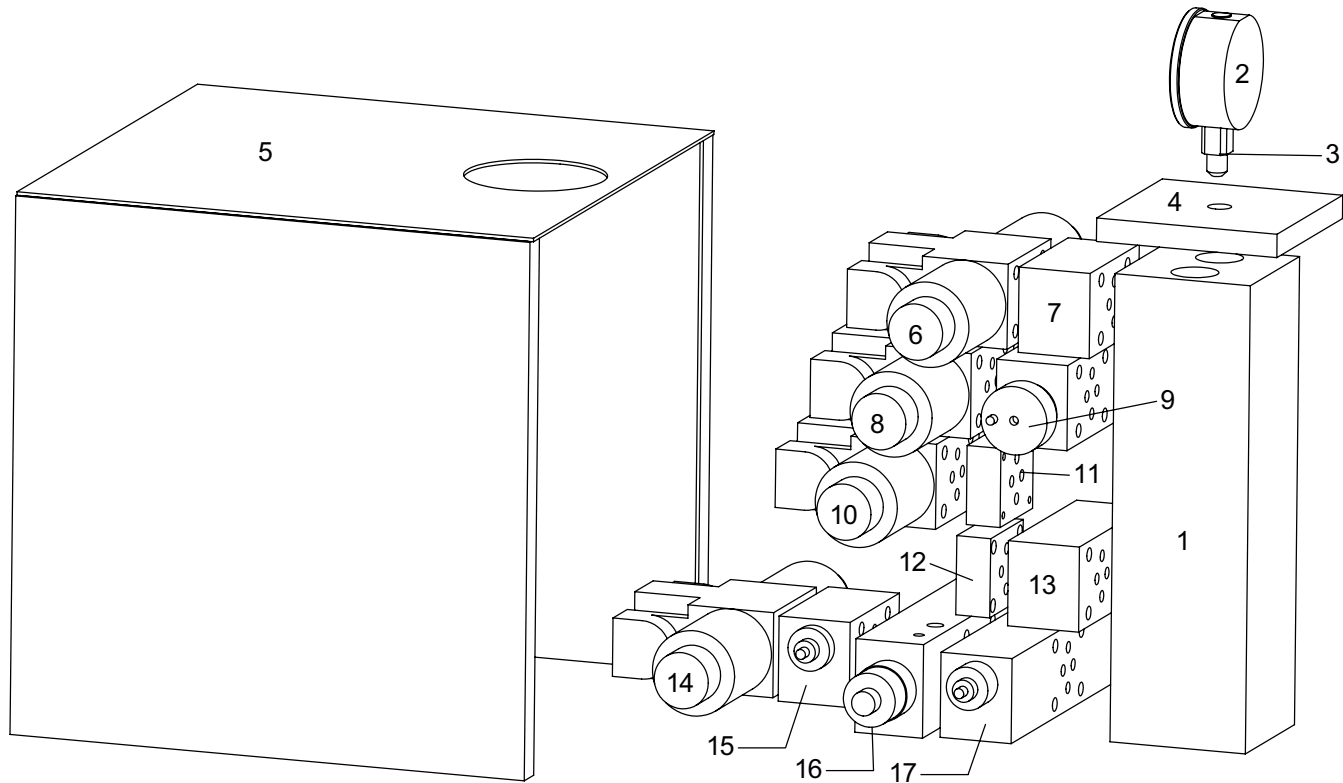
1995	1996	1997	MOD.	REF.	PART NUMBER	PART NAME	QTY	DESCRIPTION
X	X	X		A	L25A-100143	HOSE ASSEMBLY	1	100R4 - 1-1/4 in. x 55 in. (no ends)
X	X	X		B	L25A-100126	HOSE ASSEMBLY	1	100R2 - 1/2 in. x 74 in. with 1/2 FJIC both ends
X	X	X		C	L25A-100131	HOSE ASSEMBLY	1	100R1 - 1 in. x 223 in. with 1 FJIC both ends
X	X	X		D	L25A-100128	HOSE ASSEMBLY	1	100R12 - 3/4 in. x 220 in. with 3/4 FJIC both ends
X	X	X		E	L25A-100137	HOSE ASSEMBLY	1	100R2 - 3/8 in. x 21-1/2 in. with 3/8 FJIC both ends
X	X	X		F	L25A-100138	HOSE ASSEMBLY	1	100R2 - 3/8 in. x 21-1/2 in. with 3/8 FJIC both ends
X	X	X		G	L25A-100130	HOSE ASSEMBLY	1	100R12 - 3/4 in. x 61 in. with 5/8 FJIC x 3/4 FJIC ends
X	X	X		H	L25A-100129	HOSE ASSEMBLY	1	100R12 - 3/4 in. x 227 in. with 5/8 FJIC x 3/4 FJIC ends
X	X	X		I	L25A-100141	HOSE ASSEMBLY	1	100R2 - 3/8 in. x 52 in. with 3/8 FJIC both ends
X	X	X		J	L25A-100127	HOSE ASSEMBLY	1	100R12 - 1 in. x 233 in. with 1 FJIC both ends
X	X	X		K	L25A-100139	HOSE ASSEMBLY	1	100R2 - 3/8 in. x 198 in. with 3/8 FJIC both ends
X	X	X		L	L25A-100136	HOSE ASSEMBLY	1	100R2 - 3/8 in. x 184 in. with 3/8 FJIC both ends
X	X	X		M	L25A-100132	HOSE ASSEMBLY	1	100R2 - 1/2 in. x 120 in. with 1/2 FJIC both ends
X	X	X		N	L25A-100133	HOSE ASSEMBLY	1	100R2 - 1/2 in. x 148 in. with 1/2 FJIC both ends
X	X	X		O	L25A-100140	HOSE ASSEMBLY	1	100R2 - 3/8 in. x 230 in. with 3/8 FJIC both ends
X	X	X		P	L25A-100142	HOSE ASSEMBLY	1	100R2 - 3/8 in. x 55 in. with 3/8 FJIC both ends
X	X	X		Q	L25A-100135	HOSE ASSEMBLY	1	100R2 - 1/4 in. x 25 in. with 1/4 FJIC both ends
X	X	X		R	L25A-100134	HOSE ASSEMBLY	1	100R2 - 1/4 in. x 25 in. with 1/4 FJIC both ends
X	X	X		S	L25A-100125	HOSE ASSEMBLY	1	100R2 - 1/2 in. x 14 in. with 1/2 FJIC both ends
X	X	X		T	L25A-100146	HOSE ASSEMBLY	1	Tite-Flex Hose 1/4 in. x 16 in. with 1/4 FJIC both ends
				T				SUBS TO L25A-100144
X	X	X		U	L25A-100144	HOSE ASSEMBLY	1	Tite-Flex Hose 1/4 in. x 16 in. with 1/4 FJIC both ends
X	X	X		V	L25A-100147	HOSE ASSEMBLY	1	Tite-Flex Hose 1/4 in. x 16 in. with 1/4 FJIC both ends
								SUBS TO L25A-100144
X	X	X		W	L25A-100145	HOSE ASSEMBLY	1	Tite-Flex Hose 1/4 in. x 16 in. with 1/4 FJIC both ends
								SUBS TO L25A-100144
X	X	X	1600	X	L25A-100149	HOSE ASSEMBLY	1	Tite-Flex Hose 1/4 in. x 48 in. with 1/4 FJIC both ends
X	X	X	1600	Y	L25A-100148	HOSE ASSEMBLY	1	Tite-Flex Hose 1/4 in. x 48 in. with 1/4 FJIC both ends
NA	X	X	2100	AA	L25A-100150	HOSE ASSEMBLY	1	100R2 - 1/4 in. x 60 in. with 3/8 FJIC x 1/4 FJIC ends
NA	X	X	2100	BB	L25A-100151	HOSE ASSEMBLY	1	100R2 - 1/4 in. x 76 in. with 3/8 FJIC x 1/4 FJIC ends
1995	1996	1997	MOD.	REF.	PART NUMBER	WHERE USED		
X	X	X		A	L25A-100143	Reservoir suction to pump suction		
X	X	X		B	L25A-100126	Pump case drain to reservoir case drain		
X	X	X		C	L25A-100131	Filter on reservoir to "T" port on valve bank		
X	X	X		D	L25A-100128	Pump pressure port to "P" port on valve bank		
X	X	X		E	L25A-100137	Left main cylinder pilot operated check port #3 to rod end		
X	X	X		F	L25A-100138	Right main cylinder pilot operated check port #3 to rod end		
X	X	X		G	L25A-100130	Valve #1 port B to rod end left main cylinder		
X	X	X		H	L25A-100129	Valve #1 port A to rod end right main cylinder		
X	X	X		I	L25A-100141	Valve #3 port A to pilot operated check port #2 on left main cylinder		
X	X	X		J	L25A-100127	PO check port #2 left main cylinder to PO check port #2 right main cylinder		
X	X	X		K	L25A-100139	Valve #5 port B to rod end master trim cylinder		
X	X	X		L	L25A-100136	Valve #5 port A to butt end master trim cylinder		
X	X	X		M	L25A-100132	Butt end master trim cylinder to butt end slave trim cylinder		
X	X	X		N	L25A-100133	Rod end master trim cylinder to rod end slave trim cylinder		
X	X	X		O	L25A-100140	Pilot operated check port #4 on right main cylinder to valve #2 port B		
X	X	X		P	L25A-100142	Pilot operated check left main cylinder to valve #2 port A		
X	X	X		Q	L25A-100135	Load sense valve port #3 to load sense port on pump		
X	X	X		R	L25A-100134	Load sense valve port #2 to case drain on pump		
X	X	X		S	L25A-100125	Drain port on reservoir		
X	X	X		T	L25A-100146	Bottom caliper to top caliper right side		
X	X	X		U	L25A-100144	Top caliper to rigid brake line right side		
X	X	X		V	L25A-100147	Bottom caliper to top caliper left side		
X	X	X		W	L25A-100145	Top caliper to rigid brake line left side		
X	X	X	1600	X	L25A-100149	Swivel to inner brake right side		
X	X	X	1600	Y	L25A-100148	Swivel to inner brake left side		
NA	X	X	2100	AA	L25A-100150	Inner brake line right side		
NA	X	X	2100	BB	L25A-100151	Inner brake line left side		

Hydraulic Adapters

Hillco Model 250 Leveling System



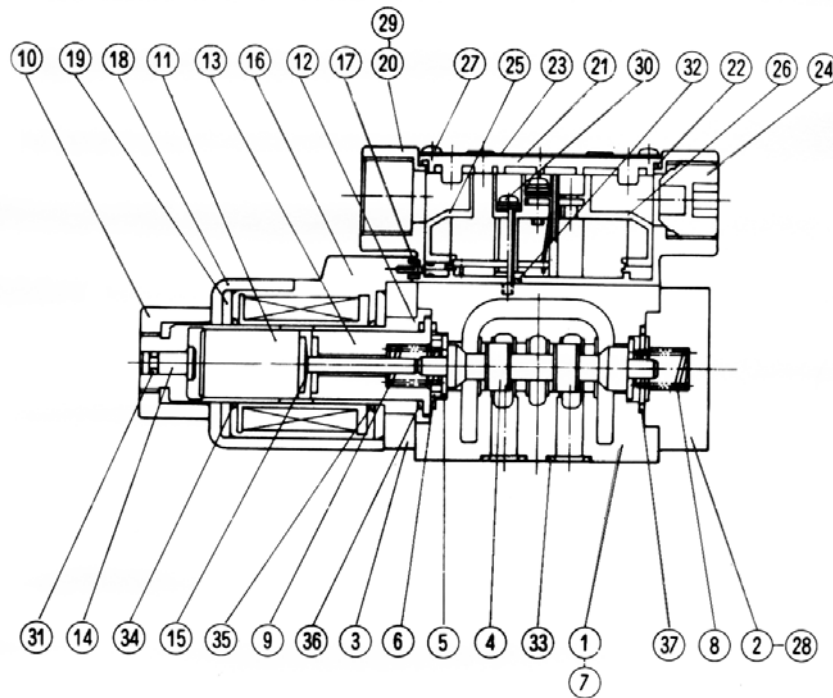
1995	1996	1997	MODEL	REF.	PART NUMBER	PART NAME	QTY	DESCRIPTION	WHERE USED
X	X	X		3	HC-10126601	HOSE CLAMP	1	1-1/4	SUCTION PORT ON PUMP
X	X	X		12	HA-M-12MJ12FJ	ADAPTER	1	#12 SWIVEL NUT RUN TEE	PRESSURE PORT ON PUMP
X	X	X		16	HC-10168301	O-RING	1	#6	PORT 1 ON LOAD SENSE VALVE
X	X	X		2	HA-S-20FJ20MB	ADAPTER	1	#20 MALE BARB X#20 FJIC	SUCTION PORT ON PUMP
X	X	X		5	HA-S-20FJ20MB	ADAPTER	1	#20 MALE BARB X#20 FJIC	SUCTION PORT ON RESERVOIR
X	X	X		6	HA-S-20MJ20MP	ADAPTER	1	#20 MJIC X 1-1/4 MPT	SUCTION PORT ON RESERVOIR
X	X	X		8	HA-S-20FO24MO	ADAPTER	1	#20 FORB X#24 MORB	FILTER HEAD ON RESERVOIR
X	X	X		9	HA-S-16MJ20MO	ADAPTER	1	#16 MJIC X#20 MORB	FILTER HEAD ON RESERVOIR
X	X	X		10	HA-F-10MO12MJ	ADAPTER	1	#12 MJIC X#10 MORB 45	"T" (TANK) PORT ON VALVE BANK
X	X	X		11	HA-F-10MJ10MO	ADAPTER	1	#10 MJIC X#10 MORB 45	"T" (TANK) PORT ON VALVE BANK
X	X	X		13	HA-S-12MJ16MO	ADAPTER	1	#12 MJIC X#16 MORB	PRESSURE PORT ON PUMP
X	X	X		15	HA-S-4MO6MJ	ADAPTER	1	#6 MJIC X#4 MORB	PORT 1 ON LOAD SENSE VALVE
X	X	X		17	HA-S-8MO10MJ	ADAPTER	1	#10 MJIC X#8 MORB	PORT B ON VALVE 1
X	X	X		19	HA-S-8MO10MJ	ADAPTER	1	#10 MJIC X#8 MORB	PORT A ON VALVE 1
X	X	X		18	HA-D-10FJ10MJ	ADAPTER	1	#10 MJIC X#10 FJIC 90 LONG DROP	PORT B ON VALVE 1
X	X	X		21	HA-S-6MJ8MO	ADAPTER	1	#6 MJIC X#8 MORB	PORT A ON VALVE 3
X	X	X		20	HA-D-10FJ10MJ	ADAPTER	1	#10 MJIC X#10 FJIC 90 LONG DROP	PORT A ON VALVE 1
X	X	X		22	HA-L-6FJ6MJ	ADAPTER	1	#6 MJIC X#6 FJIC 90	PORT A ON VALVE 3
X	X	X		23	HA-S-6MJ8MO	ADAPTER	1	#6 MJIC X#8 MORB	PORT B ON VALVE 5
X	X	X		24	HA-L-6FJ6MJ	ADAPTER	1	#6 MJIC X#6 FJIC 90	PORT B ON VALVE 5
X	X	X		25	HA-S-6MJ8MO	ADAPTER	1	#6 MJIC X#8 MORB	PORT A ON VALVE 5
X	X	X		26	HA-L-6FJ6MJ	ADAPTER	1	#6 MJIC X#6 FJIC 90	PORT A ON VALVE 5
X	X	X		27	HA-U-12MO12MO	ADAPTER	1	#12 MORB UNION	BUTT END LEFT MAIN CYLINDER TO PORT 1 P.O. CHECK VALVE
X	X	X		46	HA-S-8MJ8MO	ADAPTER	1	#8 MJIC X#8 MORB	DRAIN PORT ON RESERVOIR
X	X	X		48	HA-C-8FJ	ADAPTER	1	#8 JIC CAP	DRAIN PORT ON RESERVOIR
X	X	X		53	HA-S-6MJ8MO	ADAPTER	1	#6 MJIC X#8 MORB	PORT A ON VALVE 2
X	X	X		28	HA-L-8MJ10MO	ADAPTER	1	#8 MJIC X#10 MORB 90	PORT 3 ON P.O. CHECK VALVE ON LEFT MAIN CYLINDER
X	X	X		55	HA-S-6MJ8MO	ADAPTER	1	#6 MJIC X#8 MORB	PORT B ON VALVE 2
X	X	X		54	HA-L-6FJ6MJ	ADAPTER	1	#6 MJIC X#6 FJIC 90	PORT A ON VALVE 2
X	X	X		56	HA-L-6FJ6MJ	ADAPTER	1	#6 MJIC X#6 FJIC 90	PORT B ON VALVE 2
X	X	X		59	HA-S-6MJ8FJ	ADAPTER	1	#6 MJIC X#8 FJIC REDUCER	PORT 3 ON PILOT OPERATED CHECK VALVE ON LEFT MAIN CYLINDER
X	X	X		32	HA-L-4MP6MJ	ADAPTER	1	#6 MJIC X#4 MPT 90	ROD END PORT ON LEFT MAIN CYLINDER
X	X	X		30	HA-L-4MP6MJ	ADAPTER	1	#6 MJIC X#4 MPT 90	PORT 2 ON PILOT OPERATED CHECK VALVE LEFT MAIN CYLINDER
X	X	X		29	HA-L-12MJ12MO	ADAPTER	1	#12 MJIC X#12 MORB 90	PORT 2 ON P.O. CHECK VALVE ON LEFT MAIN CYL (1/4 NPT, RIGHT SIDE)
X	X	X		33	HA-U-12MO12MO	ADAPTER	1	#12 MORB UNION	BUTT END RIGHT MAIN CYLINDER TO PORT 1 ON P.O. CHECK VALVE
X	X	X		34	HA-L-12MJ12MO	ADAPTER	1	#12 MJIC X#12 MORB 90	PORT 2 ON PILOT OPERATED CHECK VALVE ON RIGHT MAIN CYLINDER
X	X	X		35	HA-L-8MJ10MO	ADAPTER	1	#8 MJIC X#10 MORB 90	PORT 3 ON PILOT OPERATED CHECK VALVE ON RIGHT MAIN CYLINDER
X	X	X		60	HA-S-6MJ8FJ	ADAPTER	1	#6 MJIC X#8 FJIC REDUCER	PORT 3 ON PILOT OPERATED CHECK VALVE ON RIGHT MAIN CYLINDER
X	X	X		37	HA-L-4MP6MJ	ADAPTER	1	#6 MJIC X#4 MPT 90	ROD PORT ON RIGHT MAIN CYLINDER
X	X	X		38	HA-L-8MJ8MO	ADAPTER	1	#8 MJIC X#8 MORB 90	ROD PORT SLAVE TRIM CYLINDER
X	X	X		39	HA-L-8MJ8MO	ADAPTER	1	#8 MJIC X#8 MORB 90	BUTT PORT SLAVE TRIM CYLINDER
X	X	X		1	HA-S-20MJ20MO	ADAPTER	1	#20 MJIC X#20 MORB	SUCTION PORT ON PUMP
X	X	X		41	HA-L-4MP6MJ	ADAPTER	1	#6 MJIC X#4 MPT 90	ROD PORT ON MASTER TRIM CYLINDER
X	X	X		43	HA-L-4MP6MJ	ADAPTER	1	#6 MJIC X#4 MPT 90	BUTT PORT ON MASTER TRIM CYLINDER
X	X	X		44	HA-L-6MO8MJ	ADAPTER	1	#8 MJIC X#6 MORB 90	CASE DRAIN PORT ON PUMP (1/4 NPT PORT, RIGHT SIDE)
X	X	X		45	HA-L-8MJ8MO	ADAPTER	1	#8 MJIC X#8 MORB 90	CASE DRAIN PORT ON RESERVOIR
X	X	X		47	HA-L-8MJ8MJ	ADAPTER	1	#8 MJIC X#8 MJIC 90	DRAIN PORT ON RESERVOIR
X	X	X		49	HA-L-4MJ4MO	ADAPTER	1	#4 MJIC X#4 MORB 90	LOAD SENSE PORT ON PUMP
X	X	X		50	HA-L-4MJ6MO	ADAPTER	1	#4 MJIC X#6 MORB 90	PORT 3 ON LOAD SENSE VALVE
X	X	X		51	HA-L-4MJ6MO	ADAPTER	1	#4 MJIC X#6 MORB 90	PORT 2 ON LOAD SENSE VALVE
X	X	X		52	HA-L-4MJ4MP	ADAPTER	1	#4 MJIC X#4 MPT 90	CASE DRAIN PORT ON PUMP
X	X	X		57	HA-L-6MJ6MO	ADAPTER	1	#6 MJIC X#6 MORB 90	PORT 4 ON PILOT OPERATED CHECK VALVE ON LEFT MAIN CYLINDER
X	X	X		58	HA-L-6MJ6MO	ADAPTER	1	#6 MJIC X#6 MORB 90	PORT 4 ON PILOT OPERATED CHECK VALVE ON RIGHT MAIN CYLINDER
X	X	X		61	HA-S-12FJ16MJ	ADAPTER	1	#16 MJIC X#12 FJIC INCREASER	"T" (TANK PORT ON VALVE BANK)
X	X	X		4	HC-10126601	HOSE CLAMP	1	1-1/4	SUCTION PORT ON RESERVOIR
X	X	X	BRAKE		HA-U-4MJ4MJ	ADAPTER	2	#4 MJIC UNION	SWING ARM RIGID LINE TO FLEXIBLE LINE (RIGHT & LEFT)
X	X	X	BRAKE		HA-L-2MP4MJ	ADAPTER	2	#4 MJIC X#2 MPT 90	FLEXIBLE LINE TO BOTTOM CALIPER (RIGHT & LEFT)
X	X	X	BRAKE		HA-R-4MJ4MP	ADAPTER	2	#4 MALE PIPE RUN TEE	CONNECT FLEXIBLE LINE (RIGHT & LEFT) & TO TOP CALIPER
X	X	X	BRAKE		HA-S-4MJ4MP	ADAPTER	4	#4 MJIC X#4 MPT	IN AND OUT OF SWIVELS (RIGHT & LEFT)
X	X	X	BRAKE		HA-Z-4FP4FP	ADAPTER	2	SUPER SWIVEL ST 1/4 FPT	BRAKE LINE ADAPTER AT SWING ARM JOINT
X	X	X	1600	BRAKE	HA-M-4MJ4FJ	ADAPTER	2	#4 SWIVEL NUT RUN TEE	TEE INTO ORIGINAL BRAKE LINE
X	X	X	1600	BRAKE	HA-L-4FJ4MJ	ADAPTER	2	#4 MJIC X#4 FJIC 90	FROM TEE TO MAIN LINE RIGHT AND LEFT
X	X	X		BRAKE	HA-N-4FJ	ADAPTER	4	#4 VERSIFLARE NUT	RIGID BRAKE LINE FITTINGS
X	X	X		BRAKE	HA-V-4FJ	ADAPTER	4	#4 VERSIFLARE SLEEVE	RIGID BRAKE LINE FITTINGS
NA	X	X		BRAKE	HA-N-4FJ	ADAPTER	4	#4 VERSIFLARE NUT	RIGID BRAKE LINE FITTINGS
NA	X	X		BRAKE	HA-V-4FJ	ADAPTER	4	#4 VERSIFLARE SLEEVE	RIGID BRAKE LINE FITTINGS
X	X	X		14	HA-C-12FJ	ADAPTER	1	#12 JIC CAP (2-PIECE)	ON TEE ON PUMP PRESSURE PORT (CAP PORTED #4 ORB)
X	X	X		31	HA-L-12MJ12MO	ADAPTER	1	#12 MJIC X#12 MORB 90	ROD END LEFT MAIN CYLINDER (1/4 NPT PORT IN HEAD, RIGHT SIDE)
X	X	X		36	HA-L-12MJ12MO	ADAPTER	1	#12 MJIC X#12 MORB 90	ROD PORT ON RIGHT MAIN CYLINDER (1/4 NPT PORT, LEFT SIDE)



1995	1996	1997	MODEL	REF.	PART NUMBER	PART NAME	QTY	DESCRIPTION
X	X	X		..	HC-10175601	MANIFOLD ASSEMBLY	1	
X	X	X		1	HC-10096401	MANIFOLD	1	5 STATION
X	X	X		2	HC-10096601	GAUGE, PRESSURE	1	0-5000 PSI, GLYCERINE FILLED
X	X	X		3	HC-10096701	SNUBBER, GAUGE	1	
X	X	X		4	MC-10138801	SEAL, MANIFOLD COVER BUMPER	1	
X	X	NA		5	MFL25-101389	COVER, MANIFOLD	1	
NA	NA	X		5	MFL25-101390	COVER, MANIFOLD	1	
STATION 1 - HIGH SPEED LEVELING (TOP)								
X	X	X		6	HC-10096901	VALVE, DIRECTIONAL CONTROL	1	AB BLOCKED, SEE PAGE 6-10
X	X	X		NS	EC-10205201	COIL, DIRECTIONAL CONTROL VALVE	1	30 SERIES
X	X	X		NS	EC-10080801	COIL, DIRECTIONAL CONTROL VALVE	1	20 SERIES
X	X	X		NS	HC-10102001	KIT, SEAL	..	
X	X	X		7	HC-10097001	VALVE, STANDARD FLOW CONTROL	1	SEE PAGE 6-13
X	X	X		NS	HC-10299701	KIT, SEAL	..	
X	X	X		NS	MC-10301801	KIT, BOLT, HIGH SPEED LEVELING STATION	1	
STATION 2 - LOW SPEED LEVELING								
X	X	X		8	HC-10096901	VALVE, DIRECTIONAL CONTROL	1	AB BLOCKED, SEE PAGE 6-10
X	X	X		NS	HC-10034401	COIL, DIRECTIONAL CONTROL VALVE	2	
X	X	X		NS	HC-10102001	KIT, SEAL	..	
X	X	X		9	HC-10097301	VALVE, PRESSURE COMP. FLOW CONTROL	1	SEE PAGE 6-13
X	X	X		NS	MC-10301901	KIT, BOLT, LOW SPEED LEVELING STATION	1	
STATION 3 - HEIGHT CONTROL								
X	X	X		10	HC-10096901	VALVE, DIRECTIONAL CONTROL	1	AB BLOCKED, SEE PAGE 6-10
X	X	X		NS	HC-10034401	COIL, DIRECTIONAL CONTROL VALVE	2	
X	X	X		NS	HC-10102001	KIT, SEAL	..	
X	X	X		11	HC-10097601	SUB-PLATE, ORIFICE	1	
X	X	X		NS	HC-10097701	ORIFICE	1	HEIGHT SPEED CONTROL
X	X	X		NS	MC-10302001	KIT, BOLT, HEIGHT CONTROL STATION	1	
STATION 4 - SAFETY RELIEF								
X	X	X		12	HC-10102501	PLATE, COVER	1	
X	X	X		13	HC-10098001	VALVE, SAFETY PRESSURE RELIEF	1	SEE PAGE 6-12
X	X	X		NS	MC-10302101	KIT, BOLT, SAFETY RELIEF STATION	1	
STATION 5 - HEADER TRIM								
X	X	X		14	HC-101030	VALVE, DIRECTIONAL CONTROL	1	AB BLOCKED, SEE PAGE 6-10
X	X	X		15	HC-10097001	CONTROL, STANDARD FLOW	1	SEE PAGE 6-13
X	X	X		16	HC-10102801	VALVE, HEADER TRIM RELIEF	1	LEFT-RIGHT, SEE PAGE 6-11
X	X	X		17	HC-10050201	CHECK, ANTI-CAVITATION	1	SEE PAGE 6-12
X	X	X		NS	MC-10302201	KIT, BOLT, HEADER TRIM STATION	1	

Directional Control Valve Detail

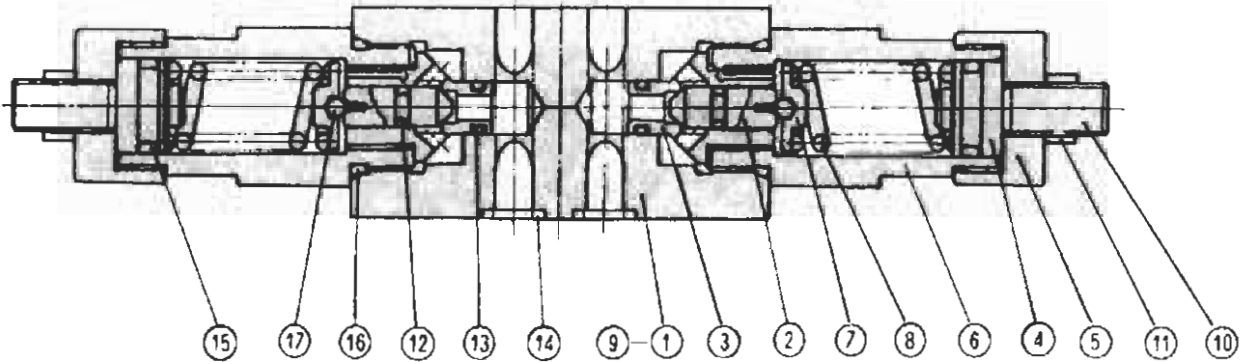
Hillco Model 250 Leveling System



1995	1996	1997	MODEL	REF.	PART NUMBER	PART NAME	QTY	DESCRIPTION
X	X	X		..	HC-10096901	VALVE, DIRECTIONAL CONTROL	1	AB BLOCKED, 30 SERIES
X	X	X		1	NSS	BODY		
X	X	X		2	NSS	COVER		
X	X	X		3	NSS	COVER		
X	X	X		4	EC-10205201	SPOOL (COIL)		30 SERIES
X	X	X		4	EC-10080801	SPOOL (COIL)		20 SERIES
X	X	X		5	NSS	RETAINER		
X	X	X		6	NSS	RING B		
X	X	X		7	NSS	SPACER		
X	X	X		8	NSS	SPRING		
X	X	X		9	NSS	SPRING		
X	X	X		10	NSS	NUT		
X	X	X		11	NSS	PLUNGER		
X	X	X		12	NSS	GUIDE		
X	X	X		13	NSS	STOPPER		
X	X	X		14	NSS	PIN		
X	X	X		15	NSS	SPACER		
X	X	X		16	NSS	COIL		
X	X	X		17	NSS	PACKING		
X	X	X		18	NSS	CASE		
X	X	X		19	NSS	YOKE		
X	X	X		20	NSS	HOUSING		
X	X	X		21	NSS	PLATE		
X	X	X		22	NSS	PACKING		
X	X	X		23	NSS	NAME PLATE		
X	X	X		24	NSS	PLUG, DIN		
X	X	X		25	NSS	TERMINAL		
X	X	X		26	NSS	COVER		
X	X	X		27	NSS	TAPPEN SCREW		
X	X	X		28	NSS	SCREW		
X	X	X		29	NSS	SCREW		
X	X	X		30	NSS	SCREW		
X	X	X		31	HC-10301001	O-RING	2	INCLUDED IN SEAL KIT (HC-10102001)
X	X	X		32	HC-10301101	O-RING	2	INCLUDED IN SEAL KIT (HC-10102001)
X	X	X		33	HC-10300001	O-RING	4	INCLUDED IN SEAL KIT (HC-10102001)
X	X	X		34	HC-10301201	O-RING	2	INCLUDED IN SEAL KIT (HC-10102001)
X	X	X		35	HC-10301201	O-RING	2	INCLUDED IN SEAL KIT (HC-10102001)
X	X	X		36	HC-10301301	O-RING	2	INCLUDED IN SEAL KIT (HC-10102001)
X	X	X		37	HC-10301301	O-RING	2	INCLUDED IN SEAL KIT (HC-10102001)
X	X	X		NS	HC-10102001	KIT, SEAL, DIRECT. CONTROL VALVE	..	

Header Trim Relief Valve Detail

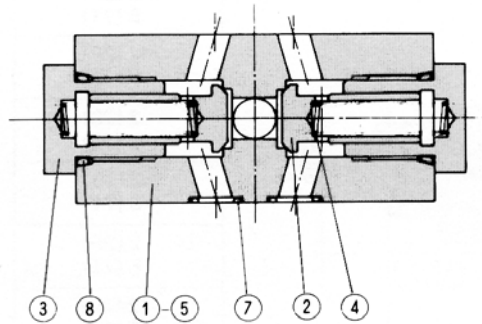
Hillco Model 250 Leveling System



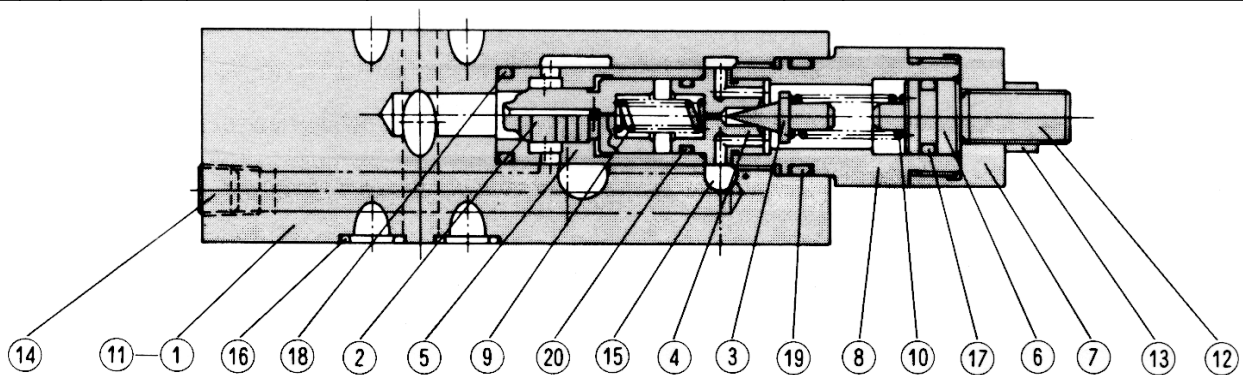
1995	1996	1997	MODEL	REF.	PART NUMBER	PART NAME	QTY	DESCRIPTION
X	X	X		..	HC-10102801	VALVE, HT RELIEF	1	LEFT-RIGHT
X	X	X		1	NSS	BODY		
X	X	X		2	NSS	POPPET		
X	X	X		3	NSS	SEAT		
X	X	X		4	NSS	PLUNGER		
X	X	X		5	NSS	BUSHING		
X	X	X		6	NSS	RETAINER		
X	X	X		7	NSS	GUIDE		
X	X	X		8	NSS	SPRING		
X	X	X		9	NSS	PLATE		
X	X	X		10	NSS	SCREW		
X	X	X		11	NSS	NUT		
X	X	X		12	HC-10300801	O-RING	2	INCLUDED IN SEAL KIT (HC-10301501)
X	X	X		13	HC-10299901	O-RING	2	INCLUDED IN SEAL KIT (HC-10301501)
X	X	X		14	HC-10300001	O-RING	4	INCLUDED IN SEAL KIT (HC-10301501)
X	X	X		15	HC-10300601	O-RING	2	INCLUDED IN SEAL KIT (HC-10301501)
X	X	X		16	HC-10300901	O-RING	2	INCLUDED IN SEAL KIT (HC-10301501)
X	X	X		17	NSS	BALL		
X	X	X		NS	HC-10301501	KIT, SEAL, HT RELIEF	..	

Anti-Cavity Check Valve and Safety Pressure Relief Valve Detail

Hillco Model 250 Leveling System



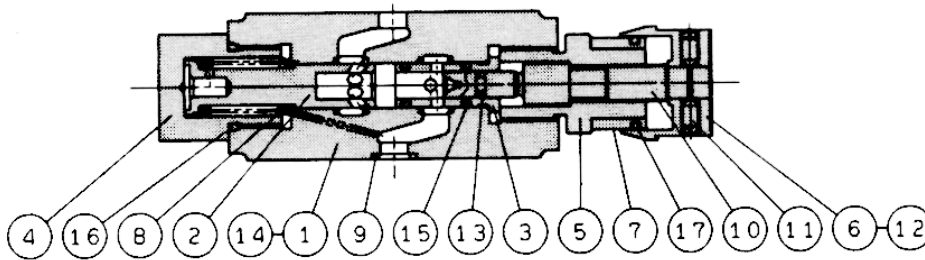
ANTI-CAVITATION CHECK VALVE								
1995	1996	1997	MODEL	REF.	PART NUMBER	PART NAME	QTY	DESCRIPTION
X	X	X		..	HC-10050201	CHECK, ANTI-CAVITATION	1	
X	X	X		1	NSS	BODY		
X	X	X		2	NSS	POPPET		
X	X	X		3	NSS	GUIDE		
X	X	X		4	NSS	SPRING		
X	X	X		5	NSS	PLATE		
X	X	X		6	NSS	PLUG		
X	X	X		7	HC-10300001	O-RING	4	INCLUDED IN SEAL KIT (HC-10188001)
X	X	X		8	HC-10300401	O-RING	2	INCLUDED IN SEAL KIT (HC-10188001)
X	X	X		NS	HC-10188001	KIT, SEAL, ANTI-CAVITATION CHECK	..	



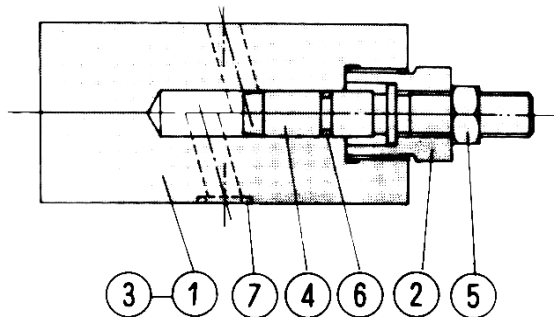
SAFETY PRESSURE RELIEF VALVE								
1995	1996	1997	MODEL	REF.	PART NUMBER	PART NAME	QTY	DESCRIPTION
X	X	X		..	HC-10098001	VALVE, SAFETY PRESSURE RELIEF	1	
X	X	X		1	NSS	BODY		
X	X	X		2	NSS	SPOOL		
X	X	X		3	NSS	POPPET		
X	X	X		4	NSS	SEAT		
X	X	X		5	NSS	SLEEVE		
X	X	X		6	NSS	PLUNGER		
X	X	X		7	NSS	BUSHING		
X	X	X		8	NSS	RETAINER		
X	X	X		9	NSS	SPRING		
X	X	X		10	NSS	SPRING		
X	X	X		11	NSS	PLATE		
X	X	X		12	NSS	SCREW		
X	X	X		13	NSS	NUT		
X	X	X		14	NSS	PLUG		
X	X	X		15	NSS	PLUG		
X	X	X		16	HC-10300001	O-RING	4	INCLUDED IN SEAL KIT (HC-10301401)
X	X	X		17	HC-10300501	O-RING	1	INCLUDED IN SEAL KIT (HC-10301401)
X	X	X		18	HC-10300601	O-RING	1	INCLUDED IN SEAL KIT (HC-10301401)
X	X	X		19	HC-10300401	O-RING	1	INCLUDED IN SEAL KIT (HC-10301401)
X	X	X		20	HC-10300701	O-RING	1	INCLUDED IN SEAL KIT (HC-10301401)
X	X	X		NS	HC-10301401	KIT, SEAL, SAFETY PRESSURE RELIEF	..	

Pressure Compensated and Standard Flow Control Valve Detail

Hillco Model 250 Leveling System



PRESSURE COMPENSATED FLOW CONTROL VALVE								
1995	1996	1997	MODEL	REF.	PART NUMBER	PART NAME	QTY	DESCRIPTION
X	X	X		..	HC-10097301	VALVE, PRESSURE COMP. FLOW CONTROL	1	
X	X	X		1	NSS	BODY		
X	X	X		2	NSS	PISTON		
X	X	X		3	NSS	SLEEVE		
X	X	X		4	NSS	BUSHING		
X	X	X		5	NSS	RETAINER		
X	X	X		6	NSS	KNOB		
X	X	X		7	NSS	DIAL		
X	X	X		8	NSS	SPRING		
X	X	X		9	NSS	PLATE		
X	X	X		10	NSS	SCREW		
X	X	X		11	NSS	SCREW		
X	X	X		12	NSS	SCREW		
X	X	X		13	HC-10300101	O-RING	1	INCLUDED IN SEAL KIT (HC-10299801)
X	X	X		14	HC-10300001	O-RING	4	INCLUDED IN SEAL KIT (HC-10299801)
X	X	X		15	HC-10300001	O-RING	2	INCLUDED IN SEAL KIT (HC-10299801)
X	X	X		16	HC-10300201	O-RING	1	INCLUDED IN SEAL KIT (HC-10299801)
X	X	X		17	HC-10300301	O-RING	1	INCLUDED IN SEAL KIT (HC-10299801)
X	X	X		NS	HC-10299801	KIT, SEAL, PRESSURE COMP, FLOW CONTROL	..	



STANDARD FLOW CONTROL VALVE								
1995	1996	1997	MODEL	REF.	PART NUMBER	PART NAME	QTY	DESCRIPTION
X	X	X		..	HC-10097001	VALVE, STANDARD FLOW CONTROL	1	
X	X	X		1	NSS	BODY		
X	X	X		2	NSS	RETAINER		
X	X	X		3	NSS	PLATE		
X	X	X		4	NSS	SCREW		
X	X	X		5	NSS	NUT		
X	X	X		6	HC-10299901	O-RING	1	INCLUDED IN SEAL KIT (HC-10299701)
X	X	X		7	HC-10300001	O-RING	4	INCLUDED IN SEAL KIT (HC-10299701)
X	X	X		NS	HC-10299701	KIT, SEAL	..	

Part Number Index

Hillco Model 250 Leveling System

PART NO.	PAGE	PART NO.	PAGE	PART NO.	PAGE	PART NO.	PAGE
EC-10000201	5-2	HA-C-8FJ	6-8	HC-10096701	6-9	HC-10297801	6-2
EC-10000301	5-2	HA-D-10FJ10MJ	6-8	HC-10096901	6-9, 6-10	HC-10297901	6-2
EC-10000401	5-2	HA-D-8MJ8MO	6-8	HC-10097001	6-9, 6-13	HC-10298101	6-2
EC-10000801	5-3	HA-F-10MJ10MO	6-8	HC-10097301	6-9, 6-13	HC-10298201	6-3
EC-10000901	5-3	HA-L-12MJ12MO	6-8	HC-10097601	6-9	HC-10298301	6-3
EC-10001001	5-3	HA-L-2MP4MJ	6-8	HC-10097701	6-9	HC-10298401	6-3
EC-10001201	5-2	HA-L-4FJ4MJ	6-8	HC-10098001	6-9, 6-12	HC-10298501	6-4
EC-10002101	5-2	HA-L-4MJ4MO	6-8	HC-10098401	6-6	HC-10298601	6-4
EC-10015601	5-4	HA-L-4MJ4MP	6-8	HC-10098601	6-1	HC-10298701	6-4
EC-10015701	5-4	HA-L-4MJ6MO	6-8	HC-10098801	6-5	HC-10298801	6-4
EC-10015801	5-4	HA-L-4MP6MJ	6-8	HC-10098901	6-5	HC-10298901	6-4
EC-10015901	5-4	HA-L-6FJ6MJ	6-8	HC-10099001	6-5	HC-10299001	6-4
EC-10016001	5-4	HA-L-6MJ6MO	6-8	HC-10099101	6-5	HC-10299101	6-4
EC-10016101	5-4	HA-L-6MO8MJ	6-8	HC-10099201	6-5	HC-10299101	6-4
EC-10016201	5-4	HA-L-8MJ10MO	6-8	HC-10099301	6-5	HC-10299201	6-4
EC-10016301	5-4	HA-L-8MJ8MJ	6-8	HC-10099501	6-5	HC-10299201	6-4
EC-10016401	5-4	HA-L-8MJ8MO	6-8	HC-10099601	6-5	HC-10299301	6-4
EC-10016501	5-4	HA-M-12MJ12FJ	6-8	HC-10099901	6-6	HC-10299401	6-4
EC-10016601	5-4	HA-M-4MJ4FJ	6-8	HC-10100101	6-6	HC-10299501	6-4
EC-10016701	5-4	HA-N-4FJ	6-8	HC-10100501	6-6	HC-10299601	6-4
EC-10017501	5-3	HA-N-4FJ	6-8	HC-10100701	6-6	HC-10299701	6-9, 6-13
EC-10017601	5-3	HA-R-4MJ4MP	6-8	HC-10101101	6-6	HC-10299801	6-13
EC-10017701	5-3	HA-S-12FJ16MJ	6-8	HC-10101301	6-6	HC-10299901	6-11, 6-13
EC-10017801	5-3	HA-S-12MJ16MO	6-8	HC-10101501	6-1	HC-10300001	6-10, 11, 12, 13
EC-10017901	5-2	HA-S-16MJ20MO	6-8	HC-10102001	6-9, 6-10	HC-10300101	6-13
EC-10018001	5-2	HA-S-20FJ20MB	6-8	HC-10102501	6-9	HC-10300201	6-13
EC-10018401	5-3	HA-S-20FO24MO	6-8	HC-10102801	6-9, 6-11	HC-10300301	6-13
EC-10018601	5-2, 5-3	HA-S-20MJ20MO	6-8	HC-10114701	6-6	HC-10300401	6-12
EC-10018701	5-2, 5-3	HA-S-20MJ20MP	6-8	HC-10126601	6-8	HC-10300501	6-12
EC-10062801	5-4	HA-S-4MJ4MP	6-8	HC-10168301	6-8	HC-10300601	6-11, 6-12
EC-10080801	6-10	HA-S-4MO6MJ	6-8	HC-10175601	6-9	HC-10300701	6-12
EC-10080801	6-9	HA-S-6MJ8FJ	6-8	HC-10188001	6-12	HC-10300801	6-11
EC-10095301	5-4	HA-S-6MJ8MO	6-8	HC-10205901	6-1, 6-2, 6-4	HC-10300901	6-11
EC-10095401	5-4	HA-S-8MJ8MO	6-8	HC-10206701	6-2, 6-4	HC-10301001	6-10
EC-10098701	6-1	HA-S-8MO10MJ	6-8	HC-10208101	6-4	HC-10301101	6-10
EC-10099401	6-5	HA-U-12MO12MO	6-8	HC-10208301	6-4	HC-10301201	6-10
EC-10205201	6-10	HA-U-4MJ4MJ	6-8	HC-10231801	6-4	HC-10301301	6-10
EC-10205201	6-9	HA-V-4FJ	6-8	HC-10231901	6-4	HC-10301401	6-12
F-DW-12T	4-1, 4-2	HA-V-4FJ	6-8	HC-10232001	6-4	HC-10301501	6-11
F-EB-04C20Z	2-2, 2-4	HA-Z-4FP4FP	6-8	HC-10232101	6-4	HC-10302301	6-3
F-EYA-08C	2-2, 2-4	HC-10033701	6-1	HC-10295401	6-3	L20A-101439	3-2
F-FHS #10C08Z	2-2, 2-4	HC-10033901	6-1	HC-10295501	6-3	L20A-101442	3-2
F-HC-10M45Z	4-5	HC-10034001	6-1	HC-10295601	6-3	L20A-101446	3-2
F-HC-20M120Z	4-5	HC-10034101	6-3	HC-10295701	6-2	L20A-101449	3-2
F-HC-20M90Z	4-5	HC-10034201	6-2	HC-10295801	6-2	L25A-100125	6-7
F-HC8-12C56	4-5	HC-10034301	6-5	HC-10295901	6-2	L25A-100126	6-7
F-HC8-12C80	4-5	HC-10034401	6-9	HC-10296001	6-3	L25A-100127	6-7
F-HN-12MZ	6-3	HC-10239901	6-3	HC-10296101	6-2	L25A-100128	6-7
F-LW-12MZ	6-3	HC-10295101	6-2	HC-10296201	6-3	L25A-100129	6-7
F-LW-20MZ	4-5	HC-10295201	6-2	HC-10296301	6-2	L25A-100130	6-7
F-LWH-12	4-5	HC-10295301	6-2	HC-10296401	6-2	L25A-100131	6-7
F-PD-08X32	6-6	HC-10035701	5-2	HC-10296501	6-2	L25A-100132	6-7
F-PR-08X32	3-2	HC-10035801	5-2	HC-10296601	6-2	L25A-100133	6-7
F-RES #10F	5-2	HC-10050201	6-9, 6-12	HC-10296701	6-2	L25A-100134	6-7
F-SHC-12C40	4-5	HC-10071201	6-1	HC-10296801	6-3	L25A-100135	6-7
F-SHC-20M60Z	4-5	HC-10071301	6-1	HC-10296901	6-3	L25A-100136	6-7
F-SRE-20	6-6	HC-10071401	6-1	HC-10297001	6-3	L25A-100137	6-7
F-SRI-52	4-4	HC-10096201	6-1, 6-2	HC-10297101	6-2	L25A-100138	6-7
F-SS-12C48	2-2, 2-4	HC-10096301	6-6	HC-10297201	6-3	L25A-100139	6-7
F-STD-12M90U	6-3	HC-10096401	6-9	HC-10297601	6-4	L25A-100140	6-7
HA-C-12FJ	6-8	HC-10096601	6-9	HC-10297701	6-2	L25A-100141	6-7

Part Number Index

Hillco Model 250 Leveling System

PART NO.	PAGE	PART NO.	PAGE	PART NO.	PAGE	PART NO.	PAGE
L25A-100142	6-7	L25A-101533	4-1	MFL25-101079	2-5	MFL25-101552	2-3
L25A-100143	6-7	L25A-101536	4-1	MFL25-101087	2-4	MFL25-101555	2-3
L25A-100144	6-7	L25A-101543	4-5	MFL25-101087	2-2	MFL25-101555	2-1
L25A-100145	6-7	L25A-101553	2-3	MFL25-101354	5-3	MFL25-101556	2-3
L25A-100146	6-7	L25A-101564	2-3	MFL25-101355	5-3	MFL25-101556	2-1
L25A-100147	6-7	L25A-101574	2-3	MFL25-101356	5-3	MFL25-101557	2-4
L25A-100148	6-7	L25A-101574	2-1	MFL25-101358	5-1	MFL25-101557	2-1
L25A-100149	6-7	L25A-101585	2-1	MFL25-101359	5-1	MFL25-101558	2-4
L25A-100150	6-7	L25A-101586	2-3	MFL25-101360	5-1	MFL25-101558	2-1
L25A-100151	6-7	L25A-101610	2-3	MFL25-101361	5-1	MFL25-101559	2-4
L25A-100831	5-4	L25A-101610	2-1	MFL25-101362	5-1	MFL25-101559	2-2
L25A-100831	5-1	L25A-101752	2-1	MFL25-101363	5-1	MFL25-101560	2-4
L25A-100832	5-4	MC-10005101	5-1	MFL25-101366	5-1	MFL25-101560	2-2
L25A-100833	5-4	MC-10018201	4-5	MFL25-101367	5-1	MFL25-101561	2-4
L25A-100834	5-4	MC-10018901	5-2	MFL25-101368	5-1	MFL25-101561	2-2
L25A-100835	5-4	MC-10019601	2-4	MFL25-101369	5-1	MFL25-101562	2-4
L25A-100836	5-4	MC-10019601	2-2	MFL25-101370	5-1	MFL25-101562	2-2
L25A-100837	5-4	MC-10019701	5-2	MFL25-101371	5-1	MFL25-101563	2-4
L25A-100838	5-4	MC-10019801	5-2	MFL25-101372	5-1	MFL25-101563	2-2
L25A-100839	5-4	MC-10019901	5-2	MFL25-101378	5-1	MFL25-101582	2-3
L25A-100840	5-4	MC-10020301	4-5	MFL25-101379	5-3	MFL25-101582	2-1
L25A-100841	5-4	MC-10020401	4-5	MFL25-101389	6-9	MFL25-101583	2-3
L25A-100842	5-4	MC-10020501	3-1	MFL25-101390	6-9	MFL25-101583	2-1
L25A-100843	5-4	MC-10020601	3-1	MFL25-101391	6-1	MFL25-101584	2-3
L25A-100844	5-4	MC-10020701	4-5	MFL25-101393	4-3	MFL25-101584	2-1
L25A-100845	5-4	MC-10023401	2-4	MFL25-101394	4-3	MFL25-101614	5-3
L25A-100846	5-4	MC-10023401	2-2	MFL25-101403	4-3	MFL25-101680	4-5
L25A-101000	6-6	MC-10023701	2-4	MFL25-101404	4-3	MFL25-102644	4-5
L25A-101002	6-6	MC-10023701	2-2	MFL25-101436	3-1	MFL25-102645	4-5
L25A-101006	6-6	MC-10023901	2-4	MFL25-101437	3-1	MFL25-102646	4-5
L25A-101006	6-6	MC-10023901	2-2	MFL25-101438	3-1	MFL25-102654	2-2, 2-4
L25A-101008	6-6	MC-10024001	2-4	MFL25-101459	4-4		
L25A-101008	6-6	MC-10024001	2-2	MFL25-101460	4-4		
L25A-101373	5-1	MC-10031901	2-4	MFL25-101466	4-2	REV 1 ADDITIONS	
L25A-101381	6-5	MC-10031901	2-2	MFL25-101466	4-1	HC-101030	6-9
L25A-101382	6-5	MC-10032101	2-5	MFL25-101467	4-2	L25A-100144	6-7
L25A-101395	4-3	MC-10032101	2-5	MFL25-101467	4-1	MC-101979	2-3
L25A-101399	4-3	MC-10032201	2-5	MFL25-101468	4-2	MC-10311601	4-5
L25A-101405	4-3	MC-10032301	2-5	MFL25-101468	4-1	MFL20-100460	2-4
L25A-101408	3-1	MC-10032401	2-5	MFL25-101469	4-2	MFL25-102655	4-5
L25A-101408	3-2	MC-10032501	2-5	MFL25-101469	4-1		
L25A-101411	3-1	MC-10032601	2-5	MFL25-101470	4-2		
L25A-101411	3-2	MC-10033401	4-4	MFL25-101470	4-1		
L25A-101415	3-1	MC-10071001	3-2	MFL25-101471	4-2		
L25A-101421	3-1	MC-10075901	3-2	MFL25-101471	4-1		
L25A-101424	3-1	MC-10095601	3-1	MFL25-101503	4-2		
L25A-101430	3-1	MC-10095801	4-3	MFL25-101503	4-1		
L25A-101454	4-4	MC-10095901	2-3	MFL25-101504	4-2		
L25A-101461	4-4	MC-10095901	2-1	MFL25-101504	4-1		
L25A-101465	4-4	MC-10108201	2-4	MFL25-101505	4-2		
L25A-101466	4-4	MC-10108201	2-2	MFL25-101538	4-5		
L25A-101467	4-4	MC-10112701	2-3	MFL25-101539	4-5		
L25A-101469	4-4	MC-10112701	2-1	MFL25-101540	4-5		
L25A-101472	4-2	MC-10138801	6-9	MFL25-101541	4-5		
L25A-101483	4-1	MC-10301801	6-9	MFL25-101542	4-5		
L25A-101500	4-1	MC-10301901	6-9	MFL25-101546	2-3		
L25A-101506	4-2	MC-10302001	6-9	MFL25-101546	2-1		
L25A-101525	4-1	MC-10302101	6-9	MFL25-101547	2-1		
L25A-101528	4-2	MC-10302201	6-9	MFL25-101549	2-1		